

MISSISSIPPI

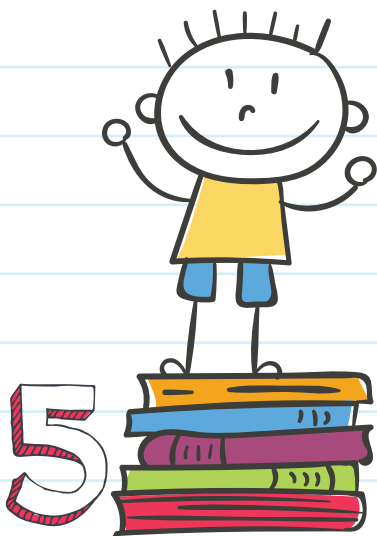
Early Learning Collaborative

PRE-K PROGRAM

Mississippi started building its first publicly funded early childhood education infrastructure in 2013 after the passage of the Early Learning Collaborative Act. The law provided \$3 million in funds to establish a limited number of Early Learning Collaborative (ELC) pre-K programs in underserved areas throughout the state. The collaboratives are partnerships among school districts, Head Start agencies, child care centers, and non-profit organizations.

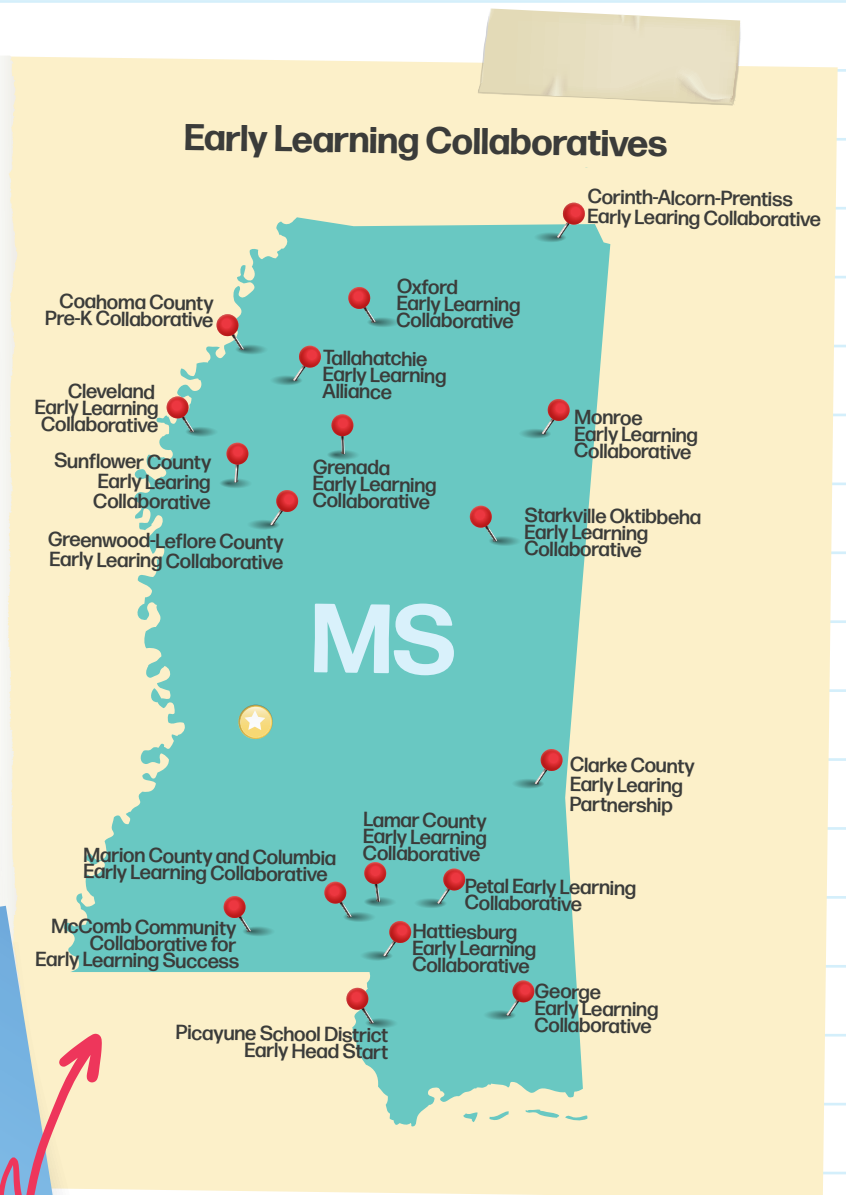
Based on the immediate results

just two years later, the Legislature increased funding to \$4 million in 2016 and to **\$6.5 million** in subsequent years.



NEW COLLABORATIVES
opened in the 2018-19 school year

currently **18**
COLLABORATIVES
serve more than
3,000
pre-K students



MISSISSIPPI
DEPARTMENT OF
EDUCATION

EARLY LEARNING COLLABORATIVE ACHIEVEMENTS

1

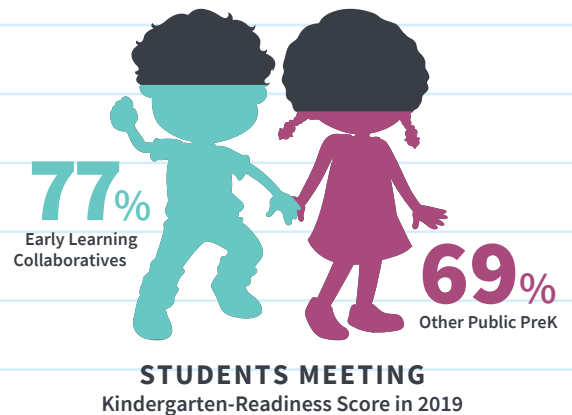
ELC students achieve higher end-of-year scores than students in all other public pre-K programs. The pre-K exit exam assesses whether students are on track to be ready for kindergarten. **The target end-of-year score for pre-K is 498.**



2

Percentage of Pre-K Students Meeting Kindergarten-Readiness Score

YEAR	ELC	OTHER PUBLIC PRE-K
2019	77%	69%
2018	76%	67%
2017	78%	66%
2016	71%	69%
2015	59%	63%



3



The National Institute for Early Education Research (NIEER) recognizes Mississippi's Early Learning Collaboratives in its annual State of Preschool report as **ONE of only seven states** in the nation that **meet all or most quality standards for early childhood education.**

4



Individuals or corporations **donated close to \$3.8 million to Early Learning Collaboratives in 2018**, an increase from \$1.6 million in 2016. Contributors are eligible to **receive a 1:1 state tax credit** for the donated amount up to \$1 million.