



MISSISSIPPI
DEPARTMENT OF
EDUCATION

Ensuring a bright *future* for every child

FY 2016 Budget Request

Presented to the

Joint Legislative Budget Committee

September 30, 2014

Dr. John R. Kelly
MS Board of Education Chair

Dr. Carey M. Wright
State Superintendent of Education

TABLE OF CONTENTS

MS Board of Education—Members, Vision, Mission and Goals	3-4
MS Department of Education—Agency Mission, Philosophy & Goals	5
MS Board of Education’s 2015 Legislative Priorities	6-12
K-12’s FY 2016 Summary Budget Request	13-15
MAEP Detail Information	16-22

MISSISSIPPI BOARD OF EDUCATION

Members

Board Member	Residence	Appointed by	Term Expires	Length of Term
Mrs. Rosemary Aultman	Clinton, MS	House Speaker	2022	9 years
Mrs. Kami Bumgarner	Madison, MS	Governor	2018	9 years
Mr. Johnny Franklin	Bolton, MS	Governor	2016	2 years
Dr. O. Wayne Gann	Corinth, MS	Lt. Governor	2015	9 years
Mr. William Harold Jones	Petal, MS	House Speaker	2017	9 years
Dr. John R. Kelly, Chair	Gulfport, MS	Governor	2020	9 years
Mr. Charles McClelland	Jackson, MS	Lt. Governor	2019	9 years
Mr. Richard Morrison	Brandon, MS	Governor	2023	9 years
Mr. Danny Spreitler	Amory, MS	Governor	2021	7 years
Dr. Carey M. Wright, State Superintendent of Education, Executive Secretary of the Board				

MISSISSIPPI BOARD OF EDUCATION'S

Vision, Mission & Goals

Vision

To create a world-class educational system that gives students the knowledge and skills to be successful in college and the workforce, and to flourish as parents and citizens.

Mission

To provide leadership through the development of policy and accountability systems so that all students are prepared to compete in the global community.

Goal 1

To mobilize resources and supports to help ensure that all students exit Third Grade reading on grade level

Goal 2

To reduce the dropout rate to 13% **by 2015.**

Goal 3

To have 60% of students scoring proficient and advanced on the assessments of the Common Core State Standards **by 2016** with incremental **increases of 3%** each year thereafter.



MISSISSIPPI
DEPARTMENT OF
EDUCATION

Ensuring a bright future for every child

MISSISSIPPI DEPARTMENT OF EDUCATION'S

Agency Mission, Philosophy & Goals

Agency Mission Statement

As the agency responsible for PK-12 public education, the mission of the Mississippi Department of Education is to implement globally competitive standards that engage and prepare all students for college and careers and to share accountability with local school districts to ensure a high-quality education for all students.

Statement of Agency Philosophy

The Mississippi Department of Education believes that students of all abilities and backgrounds can learn and have the capacity to compete in a global economy. Acting as a good steward of resources, MDE will operate in an ethical, transparent and customer-focused manner with students at the center of all decisions.

Program 1 Third-Grade Proficiency	Program 2 Dropout Prevention	Program 3 Proficiency on State Assessments	Program 4 Graduation College & Career Readiness	Program 5 Educator Quality
To increase the proficiency rates in reading for all K-3 students	To decrease the dropout rate	To increase the proficiency rates in reading and math for all students	To graduate all students college and/or career ready	To ensure every school has effective teachers and administrators

MS State Board's 2015 Legislative Priorities

MAEP

General Education

Vocational Education

MS Schools for the Blind & Deaf

Chickasaw School Fund

MISSISSIPPI BOARD OF EDUCATION'S 2015 LEGISLATIVE PRIORITIES

Full Funding of MAEP (\$2,466,356,110) (*Preliminary Estimate*)

- The Mississippi Adequate Education Program (MAEP) was designed to provide adequate resources to all school districts in an equitable manner
- The required full funding level for MAEP is prescribed by MS Code § 37-151-7

Teacher Supply Funds (\$17,680,612)

- A portion of the sales tax diversion into the Education Enhancement Fund has been redirected to fund MAEP
- Districts have not had the resources needed for instructional supplies, as prescribed by MS Code § 37-61-33

Public School Building Funds (\$20,000,000)

- Public School Building Funds, which are set aside through MS Code § 37-47-33, have also been redirected to fund MAEP
- Districts have not received resources necessary to make much-needed repairs and renovations to their schools

MISSISSIPPI BOARD OF EDUCATION'S 2015 LEGISLATIVE PRIORITIES *(continued)*

Continued funding of Literacy (Third Grade Gate) (No Increase—FY15 level \$15,000,000)

- The legislature passed the Literacy-Based Promotion Act of 2013 (SB 2347) to ensure students exiting third grade are reading on grade level
- Continued professional development of teachers and funding of literacy coaches for year two is essential
- Additional professional development opportunities are needed for educators in our colleges and universities
- Funding for screening assessments for Grades 1-3 is needed

Expansion of Early Childhood Education Pilot Programs (\$9,000,000—*an additional \$6M over the FY15 funding level*)

- The development of children from birth to age five is critical for success in school
- About one-third of students begin kindergarten without the necessary skills
- Children who start school behind their peers have a very difficult time meeting grade-level expectations and continue to struggle throughout elementary, middle, and high school
- The MBE is committed to continued collaboration with the appropriate stakeholders to further expand “The Early Learning Collaborative Act of 2013” (SB 2395)

MISSISSIPPI BOARD OF EDUCATION'S 2015 LEGISLATIVE PRIORITIES *(continued)*

New Mississippi Student Information System (MSIS) (\$5,000,000)

- Funds to provide for the complete replacement of the current statewide student information system which is over 20 years old

Increased Technology for Schools (\$3,000,000)

- Broadband expansion is vital to teachers and students who are increasing the use of technology to teach and learn in real time
- Schools need capacity to build a more robust technology infrastructure
- Hardware/Device/Software enhancements and security controls must be addressed locally and statewide
- Connectivity interruptions and system crashes need to be reduced because of simultaneous users

State Special Schools (\$4,000,000—*an additional \$1M each over FY15 funding level*)

Mississippi has four special schools as determined by law:

- The Mississippi School for the Arts
- The Mississippi School for the Blind
- The Mississippi School for the Deaf
- The Mississippi School for Mathematics and Science

MISSISSIPPI BOARD OF EDUCATION'S 2015 LEGISLATIVE PRIORITIES *(continued)*

State Special Schools *(continued)*

- These schools need funds to:
 - Cover the cost of PERS increases they have not received in recent years
 - Provide flexibility to redefine and reclassify professional PINS for comparability and competitiveness, and
 - Provide for increasing operational costs

College and Career Ready State Standards (No Increase—FY15 level \$1,000,000)

- The Mississippi Board of Education (MBE) supports the need to provide teachers and principals with expanded professional development opportunities for the full implementation of more rigorous college and career ready standards and assessments
- These more rigorous standards will support economic development in Mississippi

Test Integrity (\$1,000,000)

- The Mississippi Board of Education (MBE) takes its role in school and district accountability very seriously. When there is a suspicion of test irregularities or cheating, it must be investigated immediately and aggressively. These funds would pay for these investigations.

MISSISSIPPI BOARD OF EDUCATION'S 2015 LEGISLATIVE PRIORITIES *(continued)*

Principal's Academy (\$500,000)

- The Mississippi Board of Education supports the need for a Principal's Academy which will provide support to principals much like the recently funded Superintendent's Academy
- The Principal's Academy would:
 - Provide professional development and training for new and aspiring principals
 - Enhance overall knowledge of instructional leadership, use of assessment data, building operations and finances

Continued Funding for High School Innovations (No Increase –FY15 level-\$1,845,699)

- The MBE is dedicated to ensuring that the high school model is redefined to provide more flexibility and pathway options for high school completion
- High School Innovations would support:
 - The *Excellence for All* Program
 - Multiple pathways to exit high school
 - Dual enrollment and dual credit programs
 - Career academies for students
 - Dropout prevention initiatives
 - Increased graduation rates
 - Advanced placement courses



MISSISSIPPI
DEPARTMENT OF
EDUCATION

Ensuring a bright future for every child

MISSISSIPPI BOARD OF EDUCATION'S 2015 LEGISLATIVE PRIORITIES *(continued)*

Appointed Superintendents

- The Mississippi Board of Education supports appointment of all school district superintendents
- Only 147 of the nation's approximately 14,500 school districts have elected superintendents. Alabama, Florida and Mississippi are the only three states that elect superintendents
- The Board supports legislation to phase in the transition from elected to appointed superintendents

NOTE: Chickasaw Sessions requirement is **decreased** by \$4,488,436 per calculation as specified by court order.

STATE BOARD OF EDUCATION

FY 2016 Funding Priorities (Increases over FY 2015 Level)

Full Funding of MAEP (Preliminary)	Amount	% Increase	
Formula Requirement/Add On's over FY 15 <i>(at Full Funding)</i>	\$ 54,536,123		
Under-funding of FY 15	\$ 257,145,377	12.51%	\$ 311,681,500
Total MAEP Needs over FY 15 Actual Funding Level			
Vocational Education <i>(Career & Technical Education)</i>			
Teacher Pay Raise & Incremental Increases (FY15 & FY16)		.13%	\$ 3,164,535
Other Statute/Policy Needs			
Re-appropriated FY 14-General Education	\$ (5,000,000)		
Re-appropriated FY 14-M-COPS	\$ (3,000,000)		
Restore FY14 Re-appropriations (GE & M-COPS)	\$ 8,000,000		
Expansion of Early Childhood Education Pilot Programs	\$ 6,000,000		
Increase for Accreditation Audits	\$ 800,000		
Increase for Educator Misconduct	\$ 100,000		
State Schools (MSB, MSD, MSMS, MSA)	\$ 4,000,000		
School Attendance Officers (SAO's)	\$ 50,000		
Statewide Assessments	\$ 2,000,000		<i>Continue on next slide</i>



MISSISSIPPI
DEPARTMENT OF
EDUCATION

Ensuring a bright future for every child

STATE BOARD OF EDUCATION

FY 2016 Funding Priorities (Increases over FY 2015 Level--continued)

Full Funding of MAEP (Preliminary)	Amount	% Increase	
Principals' Academy	\$ 500,000		
Assessment Integrity	\$ 1,000,000		
Technology For Schools	\$ 3,000,000		
New Mississippi Student Information System (MSIS)	\$ 5,000,000		
Chickasaw School Fund (Decrease)	\$ (4,488,436)		
Restore Diverted Teacher Supply Funds	\$ 17,680,612		
Restore Diverted Public School Building Fund	\$ <u>20,000,000</u>	2.23%	\$ <u>55,642,176</u>
TOTAL REQUESTED INCREASE OVER FY 15 LEVEL			\$ 370,488,211
Total % Increase over FY 15 Level			14.87%

FY14 BUDGET REQUEST

All Sources of Funds

Funding Source	FY 2015 Appropriation	FY 2016 Request	Requested Inc.//(Dec.)
Total General Funds (GF)	\$2,146,413,486	\$2,524,901,697	\$ 378,488,211
Total GF General Education Re-appropriated*	\$ 8,000,000	\$ 0	\$ (8,000,000)
Total Education Enhancement Funds	\$ 265,482,156	\$ 265,482,156	\$ 0
Total Diverted Public School Building Fund (PSBF)	\$ 20,000,000	\$ 0	\$ (20,000,000)
Total Public School Building Fund	\$ 0	\$ 20,000,000	\$ 20,000,000
Total Other State Special Funds	\$ 1,126,472	\$ 1,126,472	\$ 0
Subtotal	\$2,441,022,114	\$2,811,510,325	\$ 370,488,211
MAEP Special Fund Authority	\$ 50,000,000	\$ 50,000,000	\$ 0
Total State Request	\$2,491,022,114	\$2,861,510,325	\$ 370,488,211
Total Federal/Special Funds**	\$ 833,144,087	\$ 833,144,087	\$ 0
Total K-12 Funds	\$3,324,166,201	\$3,694,654,412	\$ 370,488,211
<p>*HB 1476 allows for the re-appropriation of available FY14 funds up to \$5 million for General Education operations. It also allows for \$3M for M-COPS. MDE is requesting replacement of these one-time funds.</p>			
<p>**Federal/Special spending authority may be adjusted during the year and requests for escalation will be made to the Department of Finance & Administration (DFA) as notifications of grant increases are received for Title I , Special Education, Child Nutrition, etc.</p>			



MISSISSIPPI
DEPARTMENT OF
EDUCATION

Ensuring a bright future for every child



MISSISSIPPI
DEPARTMENT OF
EDUCATION

Ensuring a bright *future* for every child

BUDGET BACK-UP— MAEP Detail

Includes Historical Data

MISSISSIPPI ADEQUATE EDUCATION PROGRAM

Total Estimated FY 16 MAEP Cost: \$2,466,356,110

MAEP BASE STUDENT COST FY 2016

ALL CALCULATIONS PERFORMED BY A CERTIFIED PUBLIC ACCOUNTANT (TANN, BROWN, & RUSS) AS REQUIRED BY HB 1476

SUMMARY OF PRELIMINARY ESTIMATE OF BASE STUDENT COST FOR FY 2016	
FY 2015 BASE STUDENT COST	\$5,140.07
ADJUSTMENT FOR INFLATION PER STATUTE*	\$31.56
ADJUSTMENT FOR FY 15 & FY 16 PAY RAISE	\$181.43
PRELIMINARY ESTIMATE OF BASE STUDENT COST FOR FY2016*	\$5,353.06

IMPORTANT NOTE ON CALCULATION OF ESTIMATE OF THE FY 2016 BASE STUDENT COST

*Per statute, for FY 2016 the Base Student Cost will be increased by an inflationary adjustment equal to 40% of the Base Student Cost for the previous fiscal year times the latest annual rate of inflation as determined by the State Economist. The rate of inflation for the current adjustment to the Base Student Cost is 1.535%

*HB 1476 , as passed during the 2014 Session of the Mississippi Legislature, requires all FY 2016 MAEP calculations, including the calculation of the Preliminary Estimate of the MAEP Cost, to be performed by an independent Certified Public Accountant. This Preliminary Estimate was calculated by the CPA firm of Tann, Brown & Russ.

MISSISSIPPI ADEQUATE EDUCATION PROGRAM

Total Estimated FY 16 MAEP Cost: \$2,466,356,110

SUMMARY OF **PRELIMINARY ESTIMATE** OF MAEP COST FOR FY 2016*

PRELIMINARY ESTIMATE FORMULA COST	\$ 1,961,014,718	
PRELIMINARY ESTIMATE COST FOR ADD-ONS	\$ 489,343,367	
PRELIMINARY ESTIMATE COST FOR MISC. MAEP PROGRAMS (Includes Extended School Year, Orthopedic and Aphasic, Non-Public Textbooks, Bus Driver Training, and University Based Programs Transportation, & Dyslexia Scholarship)	\$ 15,998,025	
PRELIMINARY ESTIMATE OF MAEP COST FOR FY 2016*	\$ 2,466,356,110	
TOTAL INCREASE/(DECREASE) FY 2016 PRELIMINARY ESTIMATE OVER FY 2015 FULL FUNDING	\$ 54,536,123	
AMOUNT ATTRIBUTED TO ADA CHANGE	\$ -	
AMOUNT ATTRIBUTED TO INCREASE IN BASE STUDENT COST (BASED ON INFLATION AND PAY RAISE)	\$ 42,395,960	
AMOUNT ATTRIBUTED TO LOCAL CONTRIBUTION	\$ (7,647,379)	
AMOUNT ATTRIBUTED TO ADD-ONS	\$ 19,261,334	
AMOUNT ATTRIBUTED TO AT-RISK	\$ 1,483,685	
AMOUNT ATTRIBUTED TO 4% GUARANTEE	\$ (883,557)	
AMOUNT ATTRIBUTED TO MISC. MAEP PROGRAMS	\$ (73,941)	
	\$ 54,536,102	\$21 ROUNDING DIFF.

****HB 1476, as passed during the 2014 Session of the Mississippi Legislature, requires all FY 2016 MAEP calculations, including the calculation of the Preliminary Estimate of the MAEP Cost, to be performed by an independent Certified Public Accountant. This Preliminary Estimate was calculated by the CPA firm of Tann, Brown & Russ.***

MISSISSIPPI ADEQUATE EDUCATION PROGRAM

History of Appropriated Base Student Cost

Appropriated Base Student Cost

FY 2009	4,675
FY 2010	4,774
FY 2011	4,902
FY 2012	4,936
FY 2013	5,018
FY 2014	5,117
FY 2015	5,140
FY 2016*	5,353

**Estimate*



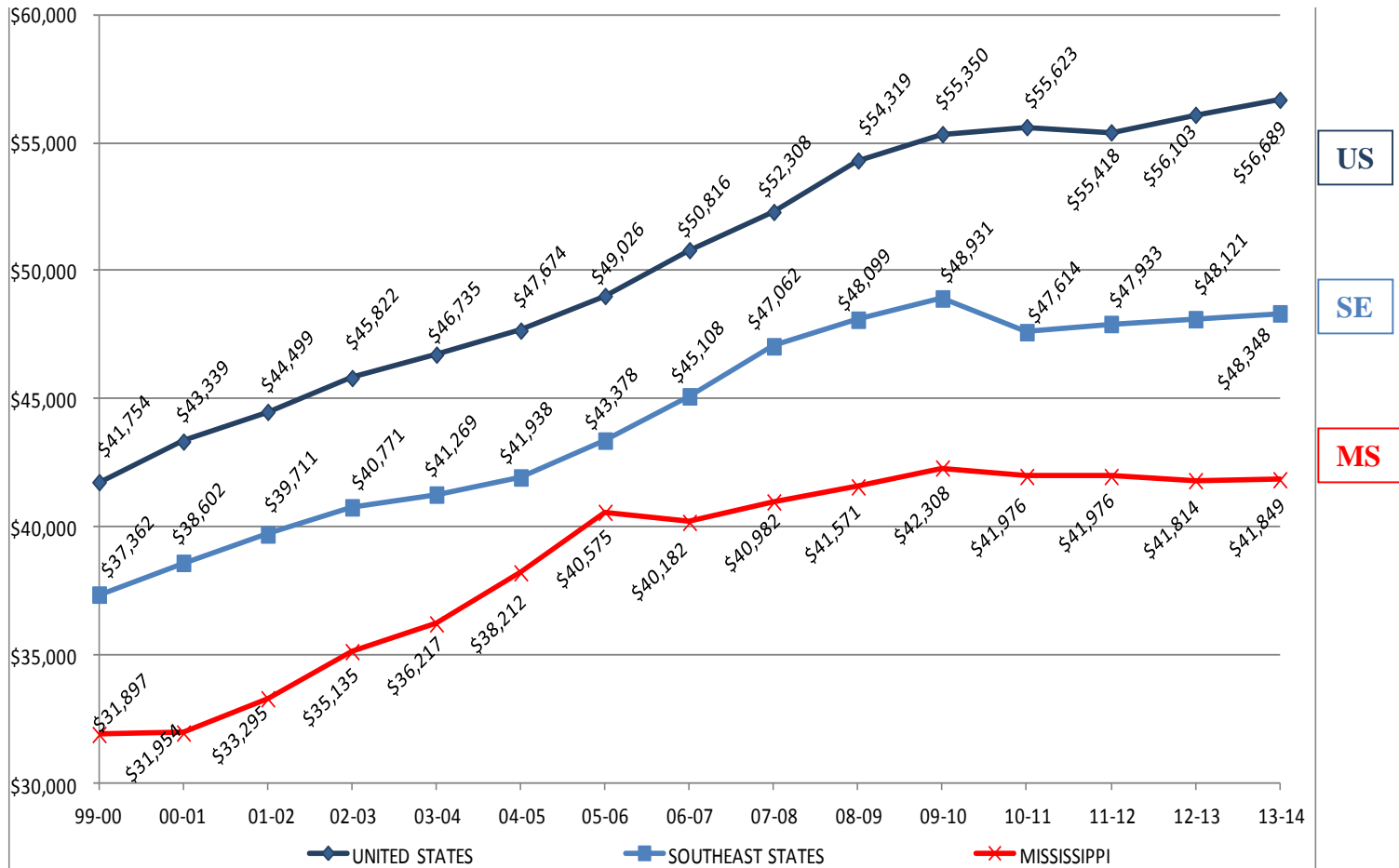
MISSISSIPPI
DEPARTMENT OF
EDUCATION

Ensuring a bright future for every child

Note: FY 2016 Estimated Base Student Cost includes FY 2015 AND FY 2016 Teacher Pay Raise

MISSISSIPPI ADEQUATE EDUCATION PROGRAM

Teacher Salary Comparison

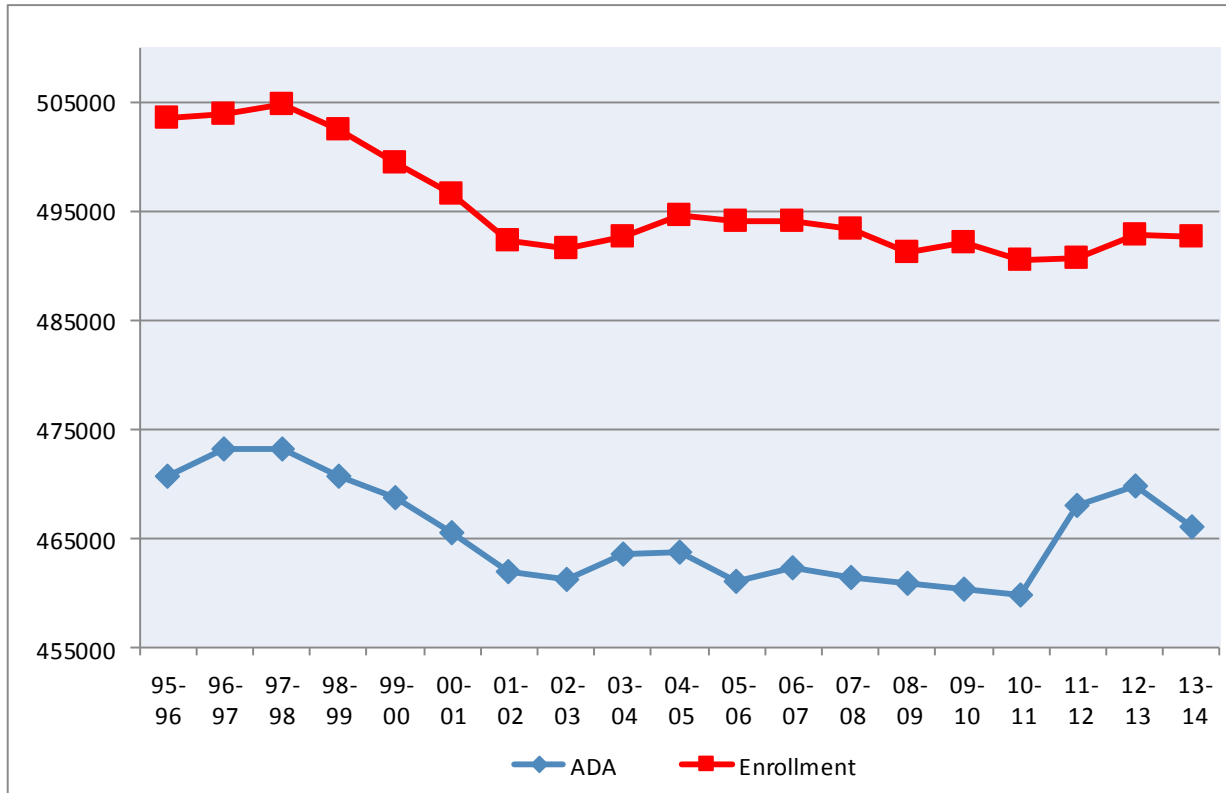


Note: A number of entities provide average teacher salary data by state. NEA and NCS are the primary providers of this information. In Mississippi, for the 06-07 school year, the average teacher salary is \$40,182, a drop from the previous year due to the number of teachers with 25 or more years experience leaving the public schools. For FY06 avg. years of experience = 13.01; the avg. years of experience for FY07 was 12.82, a .19 drop in years of experience .



MISSISSIPPI ADEQUATE EDUCATION PROGRAM

Enrollment/Average Daily Attendance



FY	Enrollment	ADA	%
2002-03	491,622	461,269	93.8%
2003-04	492,557	463,470	94.1%
2004-05	494,590	463,816	93.8%
2005-06	494,038	461,112	93.3%
2006-07	494,135	462,251	93.5%
2007-08	493,302	461,459	93.5%
2008-09	491,194	460,797	93.8%
2009-10	492,105	460,274	93.5%
2010-11	490,526	459,894	93.8%
2011-12	490,619	468,100	95.4%
2012-13	492,847	469,883	95.3%
2013-14	492,586	466,029	94.6%

MISSISSIPPI ADEQUATE EDUCATION PROGRAM

Proposed MAEP funding based on Average Daily Membership vs. Average Daily Attendance

EXAMPLE OF A METHODOLOGY TO USE AVERAGE DAILY MEMBERSHIP TO DETERMINE FUNDING FOR MAEP

MAEP funding for districts is currently based on months 2&3 average daily attendance (ADA). Since districts have to budget and expend on the number of students enrolled as opposed to the number of students in attendance, a more appropriate methodology is to base funding on average daily membership (ADM). However, to ensure that districts make all possible efforts to keep attendance up, the proposal is to use ADM to fund districts that have an attendance rate of 95% or higher. Those districts that have an attendance rate below 95% would be funded based on ADA.

	MO. 2-3 ADA	MO. 2-3 ADM	ATTENDANCE RATE	STUDENT COUNT USED	FUNDING BASED ON
PETAL SCHOOL DISTRICT	3,804.53	3,991.00	95%	3,991.00	ADM
FRANKLIN COUNTY SCHOOL DISTRICT	1,315.68	1,375.00	96%	1,375.00	ADM
GEORGE COUNTY SCHOOL DISTRICT	3,786.04	4,065.00	93%	3,786.04	ADA
GREENE COUNTY SCHOOL DISTRICT	1,954.23	2,101.00	93%	1,954.23	ADA
GRENADA SCHOOL DISTRICT	3,915.22	4,174.00	94%	3,915.22	ADA