

Licensure Updates – Mild/Moderate Disability (221)

Tamika Lipsey

Director of Educator Licensure

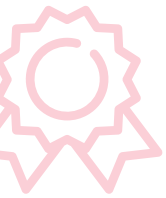
mdek12.org



MISSISSIPPI
DEPARTMENT OF
EDUCATION

September 19, 2023





1

ALL Students Proficient and Showing Growth in All Assessed Areas



2

EVERY Student Graduates from High School and is Ready for College and Career



3

EVERY Child Has Access to a High-Quality Early Childhood Program

EVERY School Has Effective Teachers and Leaders

4



EVERY Community Effectively Uses a World-Class Data System to Improve Student Outcomes

5



EVERY School and District is Rated “C” or Higher

6



VISION

To create a world-class educational system that gives students the knowledge and skills to be successful in college and the workforce, and to flourish as parents and citizens



MISSION

To provide leadership through the development of policy and accountability systems so that all students are prepared to compete in the global community

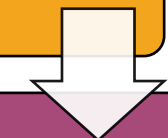
Licensure Assessment Updates and Deadlines



Traditional Program Completers



Non-traditional Program Completers



221 - (Add-on) Supplemental Endorsement



Licensure Assessment Updates and Deadlines

- **Foundations of Reading Assessment:**

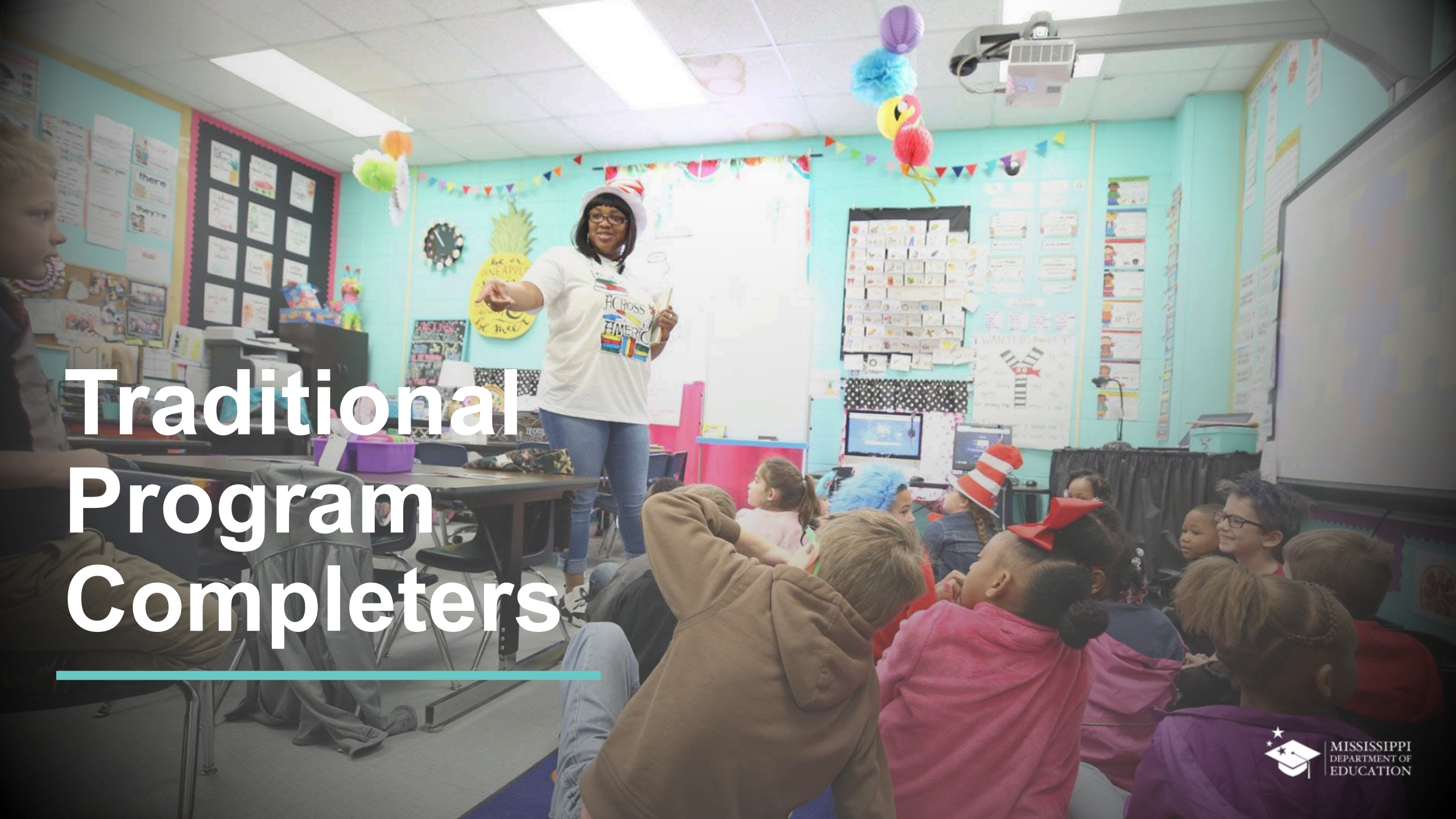
Beginning **January 1, 2023**, all candidates seeking to obtain initial licensure in Special Education, endorsement code 221, shall earn a passing score on a test of scientifically research-based reading instruction, interventions, and data-based decision-making principles as approved by the Mississippi State Board of Education (i.e., Foundations of Reading). Please note, this applies to candidates seeking to obtain licensure via traditional and alternate route Special Education Mild/Moderate K-12 educator preparation programs.

- **Praxis Subject Area Licensure Assessment**

Effective **September 1, 2023**, the *Praxis Subject Assessment*, Special Education: Foundational Knowledge (**Test Code 5355**) will replace the current version, Special Education: Core Knowledge and Applications (**Test Code 5354**) that is required as one criterion for educator licensure. Adhering to the Mississippi State Board of Education's Discontinued Test Policy, Mississippi's qualifying passing score for the discontinued version of the assessment will be accepted through August 31, 2025, if that qualifying passing score was achieved on or prior to August 31, 2023.

A completed licensure application and all supporting documents must be received by the Office of Educator Licensure on or before **December 31, 2023**, for the purpose of obtaining a license without being subject to meeting the admission and licensure test requirements for candidates that fall into one of the following categories:

- Candidates unconditionally admitted to a MSBE approved traditional educator preparation program and did not successfully completed student teaching on or before December 31, 2021
- Candidates unconditionally admitted to a MSBE approved administrator or instructional support personnel program and did not successfully completed the internship on or before December 31, 2021



Traditional Program Completers



MISSISSIPPI
DEPARTMENT OF
EDUCATION

Granted to applicants meeting all licensing requirements and completing a state approved or NCATE/CAEP approved teacher education program from a regionally/nationally accredited institution of higher learning, which prepares candidates to enter a specific area of education that includes student teaching (e.g., mathematics education, special education, science education, etc.) and pass all required licensure assessments.

- Five-year validity
- Renewable

1

**Twenty-one (21) or higher on ACT/
SAT equivalent**

2

Praxis CORE Assessment

3

**3.0 GPA on a minimum of 60-hours
of course credit**

(1)

Meet Admission Criterion

(2)

Principles of Learning and Teaching Praxis
Assessment

(3)

Praxis Subject Assessment

(4)

Foundations of Reading Assessment

Non-Traditional Program Completers



MISSISSIPPI
DEPARTMENT OF
EDUCATION

Granted to applicants that hold at least a bachelor's degree in a non-education field from a regionally or nationally accredited institution of higher learning and achieve qualifying scores on the certification assessment(s). After successful completion of the required certification assessment(s), one must be unconditionally admitted in a Mississippi alternate route program to **complete degree including the one-year internship requirement.**

Master of Arts in Teaching – MAT (221 program):

Currently offered at Delta State University, Mississippi State University and William Carey University

(1)

Bachelor's Degree in Non-Education

(2)

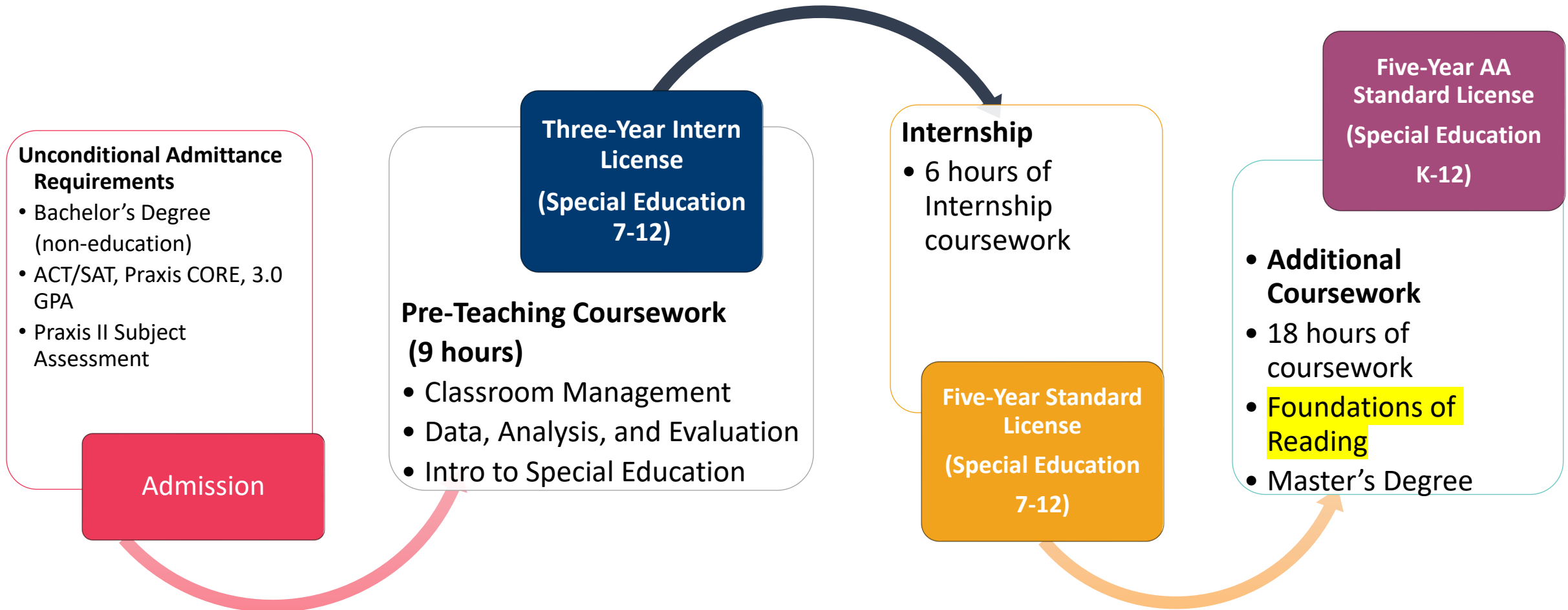
21 on ACT/SAT equivalent, Praxis CORE or 3.0 GPA

(3)

Praxis Subject Assessment

(4)

* Foundations of Reading Assessment – Required to be **unconditionally admitted** for Elementary Edu only





221 - (Add-on) Supplemental Endorsement

Licensure Assessments

- May be Added to a Three-Year Alternate License or Five-Year Standard License
- Passing score on Praxis Subject Assessment
- Passing score on Foundations of Reading

Approved Program

- May be Added to a Three-Year Alternate License or Five-Year Standard License
- Currently offered at Alcorn State University, Blue Mountain University, Delta State University, Mississippi College, Miss Valley State University, University of Mississippi, University of Southern Mississippi and William Carey University





Tamika Lipsey

Director of Educator Licensure

teachersupport@mdek12.org

601-359-3483

mdek12.org



MISSISSIPPI
DEPARTMENT OF
EDUCATION

