

Special Education Updates

June 14, 2017



Vision

To create a world-class educational system that gives students the knowledge and skills to be successful in college and the workforce and to flourish as parents and citizens

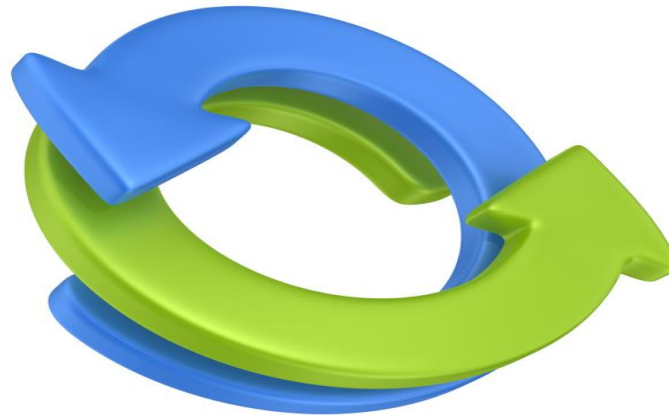
Mission

To provide leadership through the development of policy and accountability systems so that all students are prepared to compete in the global community

State Board of Education Goals 5-Year Strategic Plan for 2016-2020

- ✓ All Students Proficient and Showing Growth in All Assessed Areas
- ✓ Every Student Graduates High School and is Ready for College and Career
- ✓ Every Child Has Access to a High-Quality Early Childhood Program
- ✓ Every School Has Effective Teachers and Leaders
- ✓ Every Community Effectively Using a World-Class Data System to Improve Student Outcomes
- ✓ Every School and District is rated a “C” or Higher

2017-2018 Monitoring Cycle





2017-2018 Monitoring Cycle

Hinds County School District	Pearl Public School District	South Tippah School District
Jackson County School District	Petal School District	Stone County School District
Jefferson Davis County School District	Picayune School District	Starkville-Oktibbeha Consolidated School District
Lee County School District	Pontotoc City School District	Sunflower Consolidated School District
Montgomery Count School District	Poplarville Separate School District	Tate County School District
North Bolivar County School District	Quitman Consolidated School District	Tunica County School District
North Pike County School District	Senatobia Municipal School District	Tupelo Public School District
North Tippah School District	Smith County School District	Union Public School District

2017-2018 Monitoring Cycle

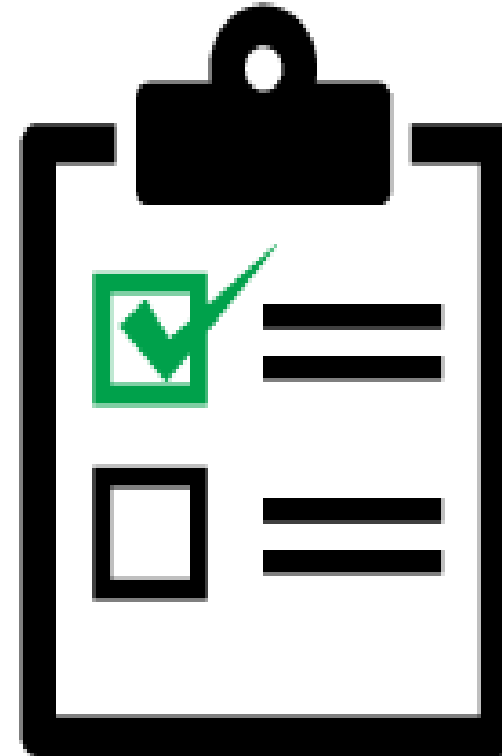
Vicksburg Warren School District	Wilkinson County School District	Relmagine Prep
Walthall County School District	Winona Separate School District	
Water Valley School District	Yazoo City Municipal School District	
Wayne County School District	Yazoo County School District	
West Bolivar Consolidated School District	MS School for the Blind	
West Point School District	MS School for the Deaf	
West Tallahatchie School District	Midtown Charter School	

Indicator Data Check-ups



Indicator Data Checkups

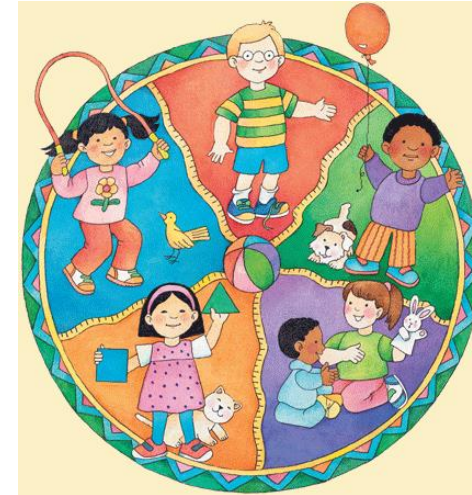
- Review your district's data checkups and make any necessary corrections by **June 30th**.
- Please contact Sharon Coon with any questions or concern.
(scoon@mdek12.org)



Early Childhood



- BDI Data due June 30 –
Email Candice Taylor at cataylor@mdek12.org with questions, log-in needs, or to move students from another district.



- Early Childhood Survey for district input - July
- Regional Data Forums for Early Childhood data upcoming – Fall 2017
- Plan to broaden to Data Forum on 6-21 data

Save the Date



Save the Date - New Special Education Directors Bootcamp

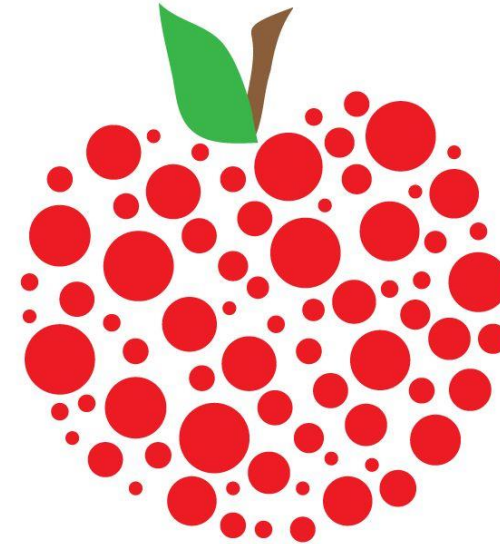
The MDE Office of Special Education would like to invite you to the New Special Education Directors Boot Camp on **July 20-21**. This is 2-day training for Special Education Directors with 0-3 years' experience. The Boot Camp is the beginning of a mentoring program that will provide support and guidance for New Special Education Directors throughout the school year.

Contact Sharon Coon to register.



Save the Date - New Special Education Teachers Web Series

The MDE Office of Special Education will host a monthly web series for New Special Education Teachers. This web series will provide guidance and support for special education teachers with 0-3 years experience.



Save the Date - New Special Education Teachers Web Series

- The Introductory webinar will be **August 14th** at 3:00 p.m. and monthly webinars will follow the **first Thursday** of every month.
- Registration links will be sent out via the special education teachers listserv.

Graduation Options



1 Traditional Diploma for All Students

24 Carnegie Units

- All students graduating from MS high schools will have the same basic requirements.
- This will increase rigor for our students and will encourage active participation as they choose which endorsement they will pursue.
- No MOD/No CTE/No District Option/No Early Exit as a stand-alone diploma

Traditional Diploma Requirements

Curriculum Area	Carnegie Units	Required Subjects
English	4	English I English II
Math	4	Algebra I
Science	3	Biology I
Social Studies	3.5	<ul style="list-style-type: none"> World History (1) US Government (1/2) US History (1) MS Studies (1/2) Economics (1/2)
Physical Ed	½	
Health	½	
Art	1	
College & Career Readiness	1	<ul style="list-style-type: none"> Within one semester of graduation
Technology or Computer Science	1	
Electives	5 ½	
TOTAL	24	

Requirements for All Students

- Students must identify an endorsement area prior to entering 9th grade (Endorsement requirements may be changed with parental permission)
- For early release, students must meet Institutions of Higher Learning (IHL) and Community College Readiness Benchmarks that allow students to attend postsecondary without remediation or demonstrate work-ready requirements (Based on Community College and most IHL remediation requirements sub-scores of 17 in English and 19 in Math or Silver level on the ACT WorkKeys)

Differences in Current Standard Diploma and New Traditional Diploma

Standard Diploma (Current)	Traditional Diploma (New)
Science Requirements – 4	Science Requirements - 3
Social Studies Requirements – 4	Social Studies Requirements - 3
None	College and Career Readiness - 1
No Endorsements	Select Endorsement prior to 9 th grade
No requirements for early release	Must meet benchmarks for early release

The MS College and Career Readiness course is being developed to meet the needs of students as they exit high school for the purpose of:

- Preparing for College – Applications, FASFA
- Preparing for a Career – Resumes, Interviews
- Financial Literacy – Credit, Student Loans
- Public Speaking – Presentations
- 21st Century Necessary Skills – *See the Next Slide*

What are 21st Century Skills?

The 21st century skills are a set of abilities that students need to develop in order to succeed in the information age.

The Partnership for 21st Century Skills lists three types of skills:

- **Learning Skills**
 - Critical Thinking
 - Creative Thinking
 - Collaborating Communicating
- **Literacy Skills**
 - Information Literacy
 - Media Literacy
 - Technology Literacy
- **Life Skills**
 - Flexibility Initiative
 - Social Skills
 - Productivity Leadership

Examples of Courses that will meet this requirement as long as required curriculum standards are included:

- Senior Project Class
- Senior Seminary Class
- Career Preparation Experience

Recommendations for All Students

- For early graduation, a student should successfully complete an area of endorsement
- Students should take a math or math equivalent course during their senior year

Traditional Diploma with Career and Technical Endorsement

Curriculum Area	Carnegie Units	Required Subjects
English	4	English I English II
Mathematics	4	Algebra I
Science	3	Biology I
Social Studies	3½	1 World History 1 U.S. History ½ U.S. Government • ½ Economics • ½ Mississippi Studies
Physical Education	½	
Health	½	
Art	1	
Career and College Readiness	1	Must occur within one semester of graduation
Technology or Computer Science	1	
CTE Electives	4	Must complete a 4-course sequential program of study to be a completer in CTE
Additional Electives	3 ½	Electives must meet the advanced elective requirements in the IHL CPC
Total Units Required	26	

Additional Requirements

- Earn an overall GPA of 2.5
- Earn silver level on ACT WorkKeys
- Earn two additional Carnegie Units for a total of 26

Must successfully complete one of the following:

- One CTE dual credit course or the Community College approved CTE articulated dual credit
- Complete an industry-based work experience or the Career Pathway Experience
- Earn a State Board of Education approved national credential

Traditional Diploma with Academic Endorsement

Curriculum Area	Carnegie Units	Required Subjects
English	4	English I English II
Mathematics	4	Algebra I Two additional math courses above Algebra I
Science	3	Biology I Two additional science courses above Biology I
Social Studies	3½	1 World History • ½ Economics 1 U.S. History • ½ Mississippi Studies ½ U.S. Government
Physical Education	½	
Health	½	
Art	1	
Career and College Readiness	1	Must occur within one semester of graduation
Technology or Computer Science	1	
Additional Electives	7 ½	Electives must meet the advanced elective requirements in the IHL CPC
Total Units Required	26	

Additional Requirements

- Earn an overall GPA of 2.5
- Courses must meet MS IHL college preparatory curriculum (CPC) requirements
- Earn MS IHL and Community College readiness benchmarks (ACT sub scores of 17 English and 19 math or completion of appropriate college-ready courses in senior year)
- Earn two additional Carnegie Units for a total of 26

Must successfully complete one of the following:

- One AP course and take the appropriate AP exam
- One IB course and take the appropriate IB exams
- One dual credit course earning a non-weighted C or higher

Traditional Diploma with Distinguished Endorsement

Curriculum Area	Carnegie Units	Required Subjects
English	4	English I English II
Mathematics	4	Algebra I Two additional math courses above Algebra I
Science	4	Biology I Two additional science courses above Biology I
Social Studies	4	1 World History • ½ Economics 1 U.S. History • ½ Mississippi Studies ½ U.S. Government
Physical Education	½	
Health	½	
Art	1	
Career and College Readiness	1	Must occur within one semester of graduation
Technology or Computer Science	1	
Additional Electives	8	Electives must meet the advanced elective requirements in the IHL CPC
Total Units Required	28	

Additional Requirements

- Earn an overall GPA of 3.0
- Courses must meet MS IHL CPC recommended requirements
- Earn national college readiness benchmarks on each subtest established by ACT (sub scores of 18 English and 22 math) or SAT
- Earn four additional Carnegie Units for a total of 28

Must successfully complete one of the following:

- One AP course and take the appropriate AP exam
- One IB course and take the appropriate IB exams
- One dual credit course earning a non-weighted B or higher

Students with an Individualized Education Program (IEP)

Students with an IEP may exit high school in one of three ways

Exit Option	Intended Student Population
Traditional Diploma with/without Endorsement	The vast majority of students with an IEP should be able to earn a Traditional Diploma.
Alternate Diploma	Students who have a Significant Cognitive Disability.
Certificate of Completion	Students with disabilities who have reached the maximum age of service under IDEA, which in Mississippi is age 20, and have not been able to meet the requirements for a traditional diploma.

Alternate Diploma Option for Students with Significant Cognitive Disability (SCD)

Curriculum Area	Carnegie Units	Required Subjects
English	4	• Alternate English Elements I-IV
Mathematics	4	• Alternate Math Elements I-III • Alternate Algebra Elements
Science	2	• Alternate Biology Elements • Alternate Science Elements II
Social Studies	2	• Alternate History Elements (Strands: U.S. History and World History) • Alternate Social Studies Elements (Strands: Economics and U.S. Government)
Physical Education	½	
Health	½	• Alternate Health Elements
Art	1	
Vocational Readiness	4	• Career Readiness I-IV (Strands: Technology, Systems, Employability, and Social)
Life Skills Development	4	• Life Skills Development I-IV (Strands: Technology, Systems, Personal Care, and Social)
Additional Electives	2	
Total Units Required	24	

Requirements

- The Alternate Diploma is **not equivalent** to a traditional high school diploma and is **not recognized** by post-secondary entities that require a traditional high school diploma
- SCD students are required to participate in the Mississippi Assessment Program-Alternate Assessment (MAP-A) and achieve a score of 3 or higher.
- Students with a Significant Cognitive Disability (SCD) ruling may participate in a program of study to earn the Alternate Diploma.

The Certificate of Completion is not equivalent to a high school diploma

Certificate of Completion Qualifications:

- The student has been unsuccessful in meeting the requirements of either the Traditional Diploma or the Alternate Diploma.
- The student has reached the maximum age of service under IDEA, which in Mississippi is age 20.

Guidance for the Discontinuation of the Mississippi Occupational Diploma (MOD)

Discontinuation of MOD



SB 2432 takes effect July 1, 2017; therefore, the MOD for students with disabilities will not be available to entering 9th grade students beginning in the 2017-18 school year.

Contributing Factors

MOD.....

- Does not meet academic entry requirements at any university or community college
- No longer accepted at most community college or vocational programs
- Not accepted for entry into any of the Armed Forces
- Not recognized for Federal financial aid
- Not recognized by employers as an equivalent to a high school diploma

Requests from multiple stakeholders made up of special education teachers, school administrators, and parents.

An Important Decision



- Students currently on the MOD (9th grade students prior to 2017-2018) have the option to remain on the MOD.
- IEP Committees should work to evaluate each student's transcript and determine if their current exit option continues to be appropriate.

9th Grade NEXT STEPS

9th NEXT STEPS...

9th Grade Sample Course Flow



Recommendation
Students entering 9th grade in 2017-2018 should begin working toward a standard high school diploma.

Students Entering 9th Grade 2017-2018

- Teacher uses High School Program of Study Worksheets to identify Carnegie Units earned and courses needed
- Using Program of Study Worksheet and Course Flow Chart, develop options for student
- Conduct IEP meeting
- Teacher works with school counselor to develop student's course of study

- IEP TEAM CONSIDERATIONS**
- ✓ Student Age
 - ✓ Current LRE
 - ✓ Parent Input
 - ✓ Transition Plan
 - ✓ Accommodations and Modifications

9 th Grade Schedule	Courses	Location of Services	Purpose	Carnegie Units Earned
Period 1	English I (230174)	General Education	Grade-level content instruction	1
Period 2	Foundations of Biology (no course code available yet)	General Education	Grade-level content instruction	1
Period 3	MS Studies/Intro to Geography (450705/450704)	General Education	Grade-level content instruction	1
Period 4	Foundations of Algebra (270390)	General Education	Grade-level content instruction	1
Period 5	STEM/Keystone CTE Course Codes (000273/990002)	General Education	Grade-level content instruction	1
Period 6	Compensatory Reading I	Special Education	Remediation of deficit Skills, re-teaching and pre-teaching of grade-level content	1
Period 7	PE/Health (340113/340133)	General Education	Grade-level content instruction	1
Period 8	Elective (or a second special education tutorial block without a Carnegie Unit if needed) or Learning Strategies (230180)	General Education	Grade-level content instruction	1

Additional Course Options:

English

- None

Science

- Biology 1 (260131)

Social Studies

- None

Math

- Algebra 1 (270404)
- Integrated Math 1 (270731)

Technology

- Technology Foundations
 - Academic (110630)
 - CTE (992307) =
- ICT II
 - Academic (110620)
 - CTE (000272) =

Guidance

The Office of Special Education has developed a resource packet to provide guidance for the discontinuation of the Mississippi Occupational Diploma

<http://mdek12.org/docs/special-education-library/guidance-for-discontinuation-of-the-mississippi-occupational-diploma-document.pdf?sfvrsn=2>

Points to Consider

- Student age and his/her right to a free appropriate public education through age 20
- Student's Least Restrictive Environment
- Transition Plan
- Accommodations and Modifications
- Parental Input

Training

Date	Format	Topic	Location
May 8, 2017	A.M. Face to Face P.M. Webinar	Introduction to the Guidance Document	A.M. MDE Auditorium P.M. Online
May 10, 2017	Recordings	Multiple recordings of how to use each section of this guide	Online
August 2017	Webinar	Transitioning from MOD to standard diploma	Online
Fall 2017	Face to Face	Scheduling and instructional strategies to facilitate the MOD transition	6 locations across the State and in districts as requested
Fall 2017	Webinar	Q&A Sessions	Online

Please email any questions to:
SpecialEducation2@mdek12.org

State Personnel Development Grant



REACH-MS includes two initiatives, Positive Behavioral Interventions and Support (PBIS) and Universal Design for Learning (UDL).

Both initiatives are designed to increase student performance on state assessments and to maximize general education participation for students with disabilities. Current REACH-MS PBIS focus includes decreasing out-of-school suspensions, expulsions, and drop-out rates.

REACH-MS UDL initiative's focus is on the implementation of universal design for learning involving literacy in select Kindergarten through 3rd grade classrooms. Additional emphasis is being placed on interventions in early childhood education programs and with students identified as having significant cognitive disabilities.

For additional information regarding PBIS or UDL,
please contact:

Brittany Herrington
Brittany.herrington@usm.edu

Margaret Ellmer
Margaret.ellmer@mdek12.org

Christa Dunnam
Cdunnam@mdek12.org

REACH MS
www.usm.edu/reachms
601-266-4693

Fiscal Updates



MCAPS - TECHNICAL ASSISTANCE TRAINING

- MDE (OSE) will be sponsoring two-half day training sessions to assist districts in completing their Project Applications.
- The goal of these technical assistance sessions is for districts to leave the technical assistance sessions with a completed budget ready for submission to their local school board for approval.

MCAPS - TECHNICAL ASSISTANCE TRAINING

- LEAs are to register and attend only one of the half day sessions. LEAs must bring their laptops, draft budget and other documentation needed to develop the Project Application.
- Registration links will be emailed via the SpEd Directors listserv.

MCAPS - TECHNICAL ASSISTANCE TRAINING

LEAs are to register and attend only one of the half day sessions. LEAs must bring their laptops, draft budget and other documentation needed to develop the Project Application. Registration links will be emailed via the SpEd Directors lists

Training times for all locations are :

Morning Session 8:30 – 11:30

Afternoon Session 1:00 – 4:00

Training dates are as follows:

July 11-12, 2017 – Jackson, MS

July 13-14, 2017 - Gulfport, MS

July 25-26, 2017 – Cleveland, MS

July 27-28, 2017 - Oxford, MS

EDUCABLE CHILD

The fifth pay period ended on **June 12**. Reconciliations will be conducted over the next two weeks and the educable child rate for the 2017-2018 will be announced on **June 30**.

September 15

- Educable Child Student Applications

September 18

- Positive Behavior Applications
- Educational Interpreter Applications

September 22

- Educable Child 1st Pay Period

September 30

- Expenditure Report
- Extended School Year (ESY) reimbursements due
- **Project Application due**

Questions?



Contact Information

Gretchen Cagle
State Director of Special Education
Gcagle@mdek12.org

Office of Special Education
www.mdek12.org/ose
(601) 359-3498