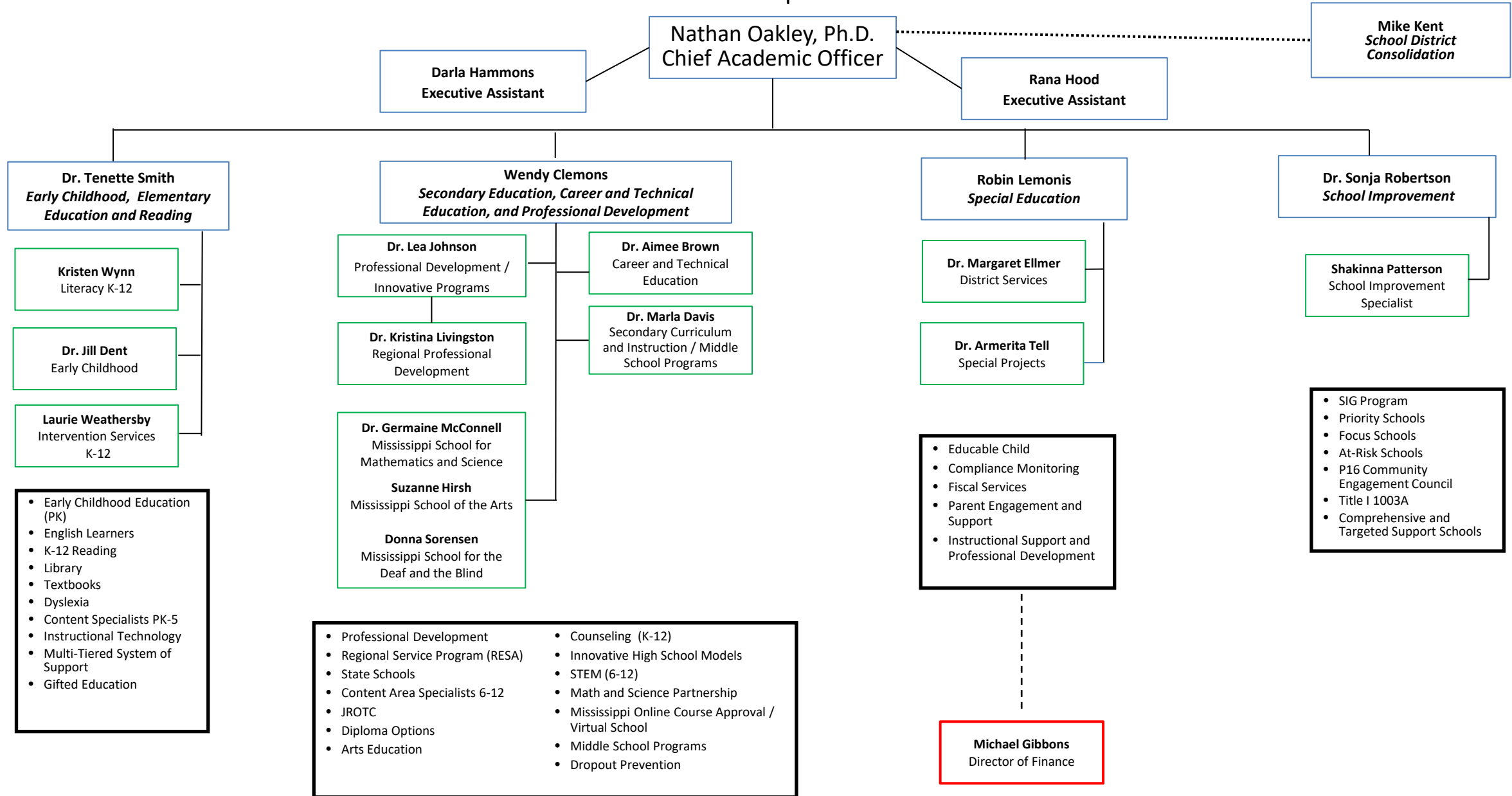


Office of Academic Education Leadership Chart



- Early Childhood Education (PK)
- English Learners
- K-12 Reading
- Library
- Textbooks
- Dyslexia
- Content Specialists PK-5
- Instructional Technology
- Multi-Tiered System of Support
- Gifted Education

- | | |
|---|--|
| <ul style="list-style-type: none"> • Professional Development • Regional Service Program (RESA) • State Schools • Content Area Specialists 6-12 • JROTC • Diploma Options • Arts Education | <ul style="list-style-type: none"> • Counseling (K-12) • Innovative High School Models • STEM (6-12) • Math and Science Partnership • Mississippi Online Course Approval / Virtual School • Middle School Programs • Dropout Prevention |
|---|--|

- Educable Child
- Compliance Monitoring
- Fiscal Services
- Parent Engagement and Support
- Instructional Support and Professional Development

- SIG Program
- Priority Schools
- Focus Schools
- At-Risk Schools
- P16 Community Engagement Council
- Title I 1003A
- Comprehensive and Targeted Support Schools