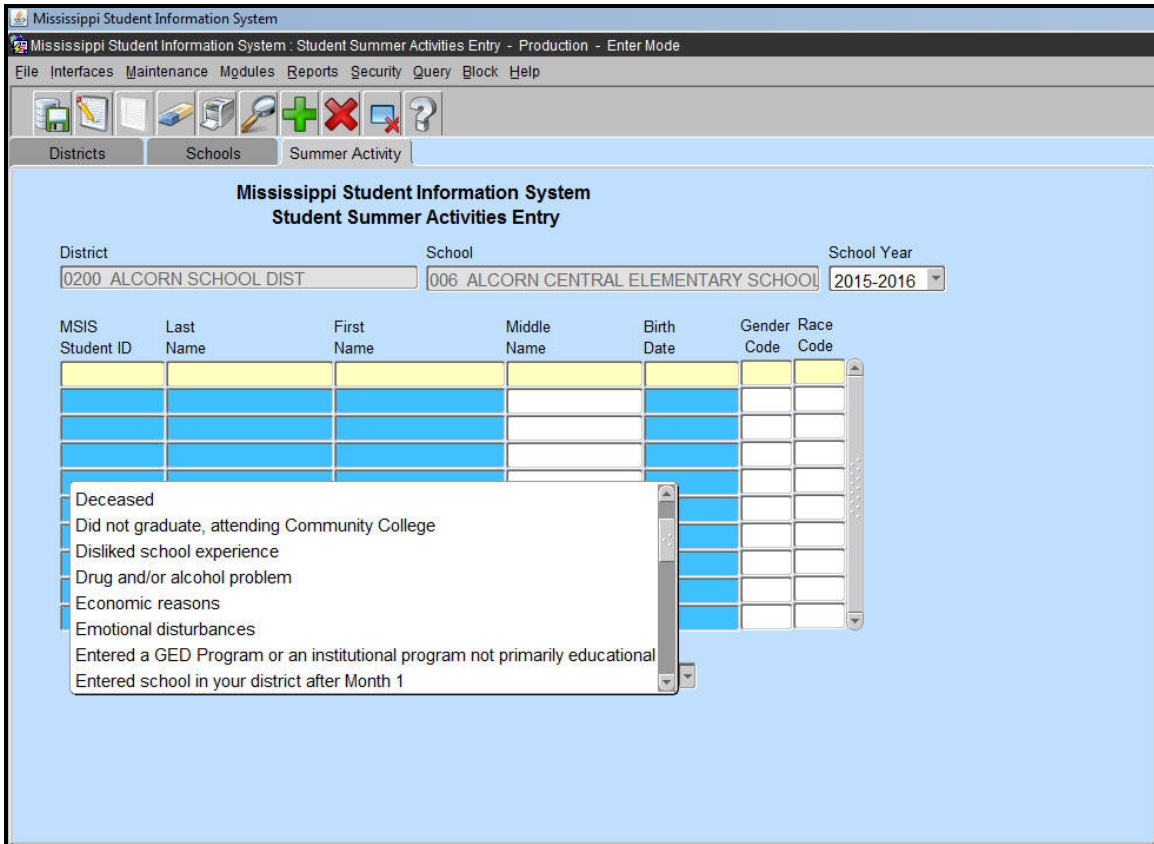


# Summer Activity

To access this screen go to MODULES>STUDENT>SUMMER ACTIVITY.



For students that were in Net Membership at the end of Month 09 for the previous school year and do not return to a Mississippi public school in Month 01 of the next school year, the school will have to mark each student with the reason why they did not return.

Once all school districts have approved their month 1 data and have a "COMPLETED" status, a procedure will run to populate this screen. This procedure will be run as soon as all districts have approved their month 1 data. Each student on the screen will have to be updated with a reason for not returning to school for the new school year.

A Summer Activity report should then be run by the school and given to the School Attendance Officer.

The School Attendance Officer will determine the reason why each student is not in school and return the report to the school.

The school will then select a reason for each student on the Summer Activity screen. Once the selections are made, the School Attendance Officer will verify the data in MSIS. This process should be completed by Christmas break.

## Summer Activity Reasons

ST04 - Transfer to a nonpublic school  
ST05 - Transfer to another State or Country  
ST07 - Transfer to an approved community based GED program (***paperwork must be completed with Compulsory School Attendance Office to use this code***)  
ST08 - Transfer to home school  
SZ01 - Death  
SD01 - SD21 - Dropout Reasons (see below)  
IS01 - In School, but not reported in your district  
IS02 - In attendance but not reported by another MS public school district  
IS03 - Entered school in your district after Month 01  
GR01 - Graduated last school year, but not reported in MSIS  
FL01 - Completed Academics but failed FLE or subject area test

## Summer Activity Dropout Reasons

SD01 - Physical illness or physical disability  
SD02 - Drug and/or alcohol problem  
SD03 - Emotional Disturbance  
SD04 - Behavioral Difficulty exclusive of suspension/expulsion  
SD05 - Suspended/Expelled  
SD06 - Restrained by court action  
SD07 - Would/could not keep up with work - was failing  
SD08 - Peer Pressure  
SD09 - Felt I did not belong  
SD10 - Dislike of School Experience  
SD11 - > or < Compulsory attendance age  
SD12 - Entered a GED or an institutional program not primarily educational  
SD13 - Lack of parental support/interest  
SD14 - Must care for family member  
SD15 - Economic Reasons  
SD16 - Married  
SD17 - Pregnant  
SD18 - Whereabouts Unknown  
SD19 - Reason Unknown  
SD20 - Other (Specify)  
SD21 - Did not graduate, attending Community College