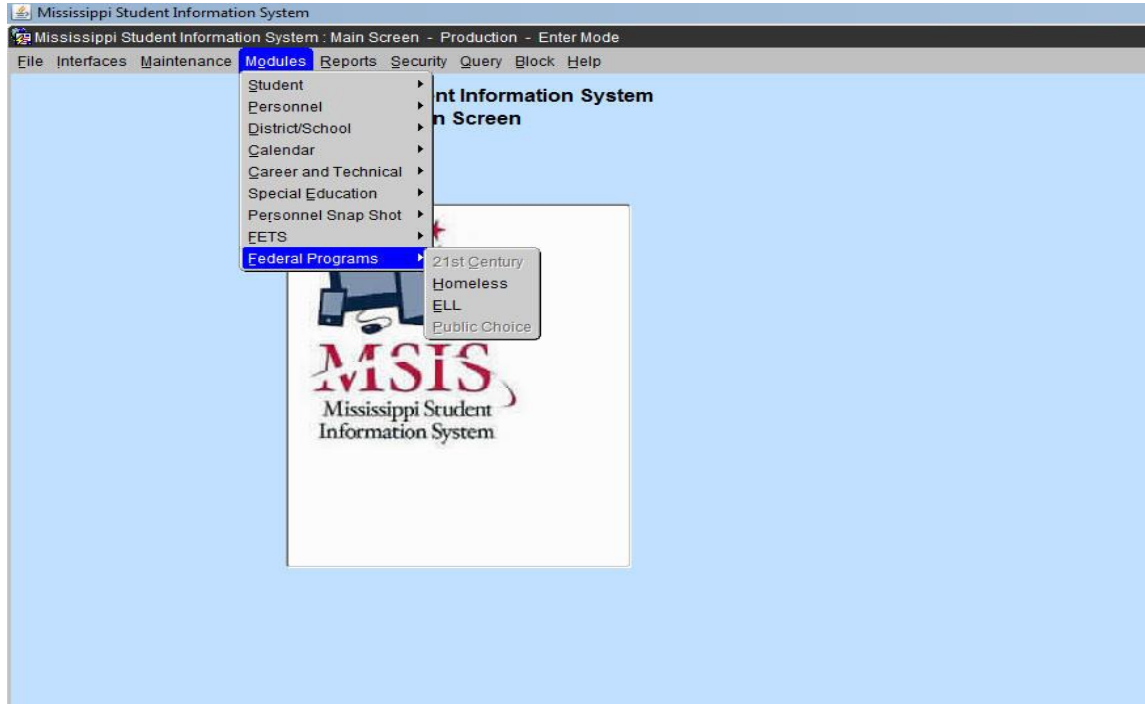


## Federal Programs

To access this screen go to MODULES>FEDERAL PROGRAMS.



**\*\*\* Details are provided in the Federal Programs manual.**

**\*\*\* Note on Homeless Students \*\*\***

Homeless Students: Please make sure that each of your Homeless students are marked as **Title I Homeless** in your student package for each month they are considered to be Homeless in order for them to appear in MSIS with the Homeless Indicator for those months.

**\*\*\* Note on ELL Students \*\*\***

ELL (LEP) Students: There was a lot of confusion concerning LEP student indicators not showing as marked correctly in MSIS. It was determined that for Districts that are SAMS users, you must mark the **LE** (Limited English) indicator and the **Title I** indicator for those students in your package. This will allow your students to be correctly identified as LEP students when your file is submitted to MSIS.

For those Districts that are not SAMS users, please contact your Vendor on how to correctly identify these students in your student package.