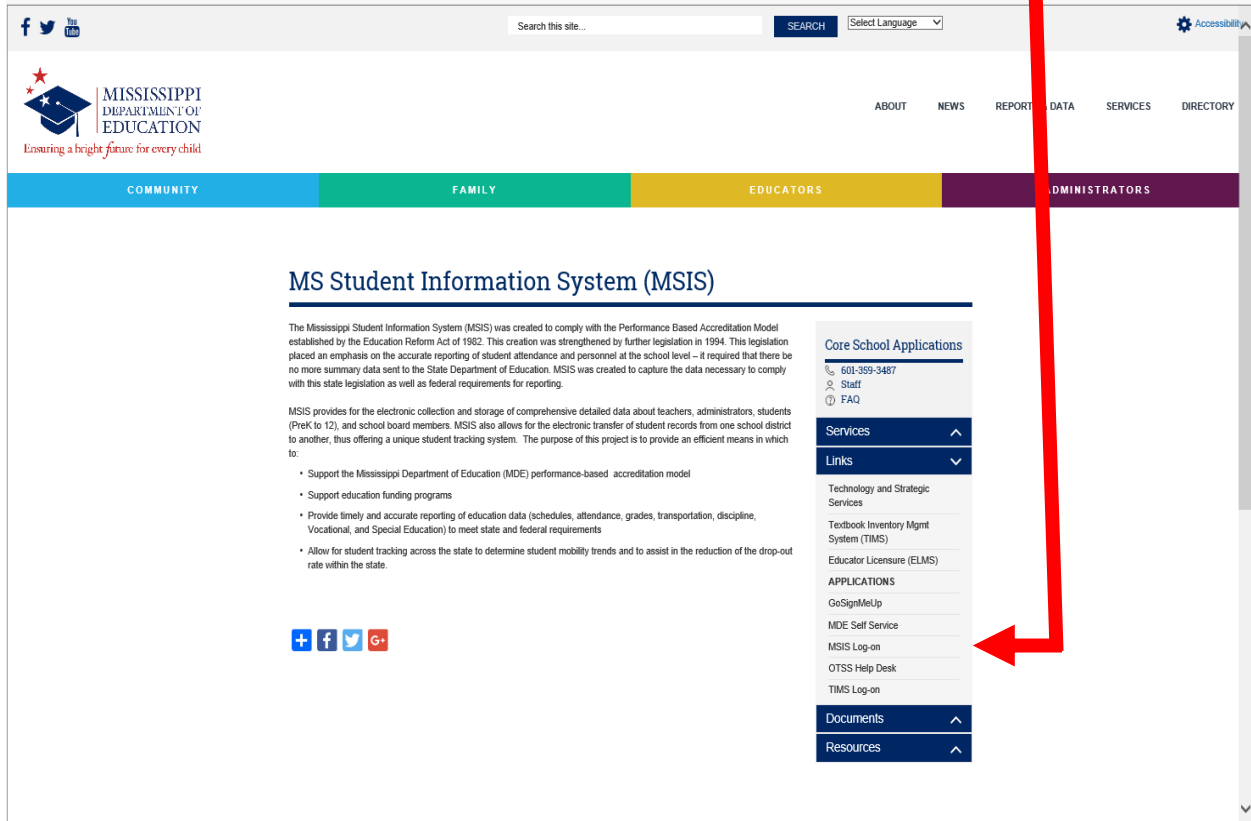


ACCESSING MSIS

To logon to MSIS go to the MDE web site, <http://www.mdek12.org/>, and under Educators tab, Administrators tab or Services tab, click on the MSIS (MS Student Information System). You will be taken to the MSIS web page. Click on the Links section; “MSIS Log-on” under Applications.



The MSIS launch page will come up. If you want to bookmark this page (<https://mdeapp2.mdek12.org/forms/frmservlet?config=msis>) you can do so. This will allow you to come directly to this page to login to MSIS.

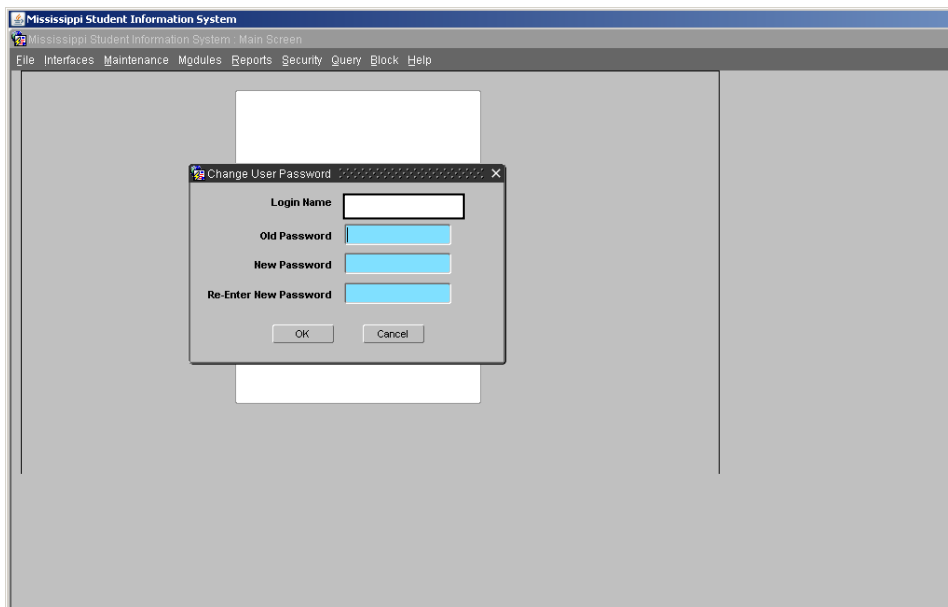
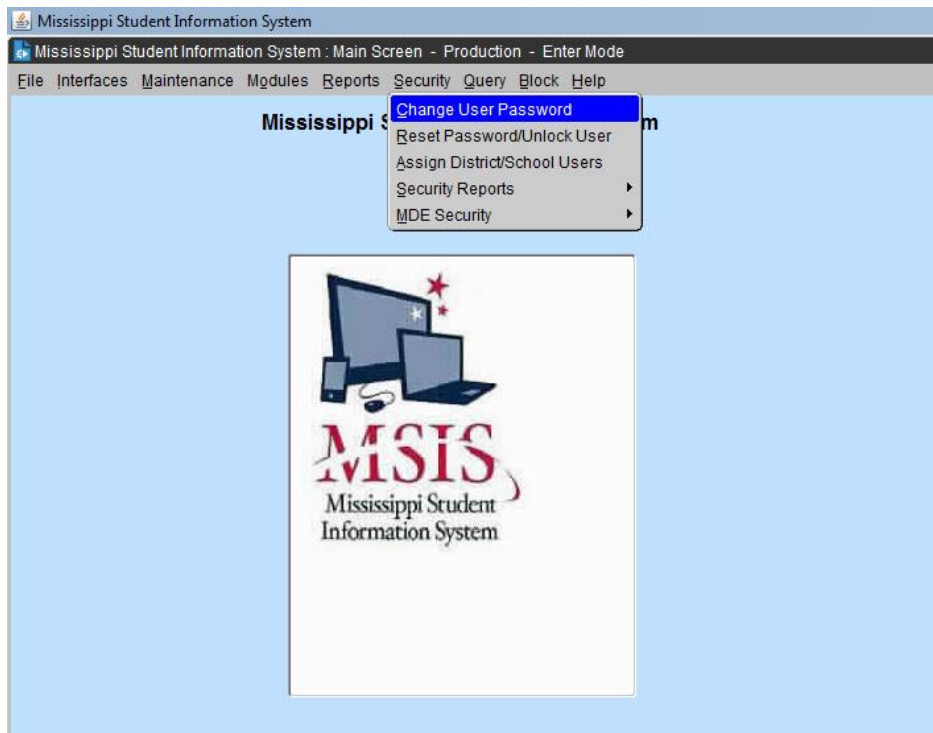
Enter your username, password, and MSIS as the database and then click Connect or press Enter.

The image shows a small, dark-themed dialog box titled 'Logon'. It has three text input fields stacked vertically. The first is labeled 'Username:', the second 'Password:', and the third 'Database:'. Below the input fields are two buttons: 'Connect' and 'Cancel'. The dialog box has a standard window title bar with a close button (X) in the top right corner.

PASSWORDS

Always make sure that you close the browser when you leave your computer. Never let the computer remember the password for you. Never put the password on a sticky note on your computer. And NEVER share your password with anyone else.

You can change your password in MSIS at any time. Just go to Security, Change User Password. You can only change the Password for your Login Name.



The Password must be at least 8 characters and not longer than 30 characters. The Password must contain at least one non-alpha character. The new password must be at least two characters different from the old password. Passwords will expire 60 days from the date of a change. Passwords not changed 30 days after date of expiration will be locked. Please contact your MSIS Primary Contact or MSIS Secondary Contact. They will be able to unlock a locked account. Any account will be locked after three failed login attempts and the user will have to contact the MSIS Primary Contact or MSIS Secondary Contact to unlock the account.

The Password Reset Policy is:

- User contacts their district's MSIS Primary or MSIS Secondary Contacts.
- MSIS Primary or MSIS Secondary Contact should contact the OTSS Help Desk at mdeapps@mdek12.org to reset password by emailing the name and last 4 digits of the user SSN that needs their password reset.

On the Change Password screen, enter your old password, then your new password, reenter the new password and click on OK. You should logout and log back in to be sure the new password works.

MSIS sessions will be logged out after 30 minutes of inactivity.

A session where a "save" hasn't been executed or a screen change hasn't occurred is considered an inactive session.

A session where a report is running is NOT considered an inactive session.

If you are entering data but haven't saved within the last 30 minutes then your session will be considered inactive. You won't know the session is inactive until you try to save the data, so it is important to save regularly.