

OFFICE OF CHIEF ACCOUNTABILITY OFFICER
Summary of State Board of Education Agenda Items
Consent Agenda
August 15, 2019

OFFICE OF SAFE AND ORDERLY SCHOOLS

D. Approval of a new school site for the DeSoto County School District

Background and Purpose: Pursuant to Miss. Code Ann. § 37-7-315, the DeSoto County School District requests approval of a site for the construction of a new Lewisburg Middle School (sixth through eighth grade with an enrollment of approximately 950-1,000 students) located on approximately 77-78 acres on Highway 305 at Ingram's Mill Road in Olive Branch, Mississippi.

Recommendation: Approval

Back-up material attached

§ 37-7-315. Designation of school buildings and attendance centers.

In creating school districts under the provisions of Article 1 of this chapter, it shall not be necessary that the school board, in the order creating such districts, specify or designate the location of the school houses or attendance centers therein, and existing school buildings shall be retained as places of attendance until changed in the manner hereinafter set forth. Where any existing facilities or buildings shall not be used as attendance centers, the school board may utilize such facilities and buildings in connection with any related school activity which said school board may deem advisable.

The school board of any school district shall have the power and authority to designate the locations for school buildings and attendance centers in the school district subject to its jurisdiction and to change, alter or abolish the location of such school buildings and attendance centers from time to time as may be required by the educational needs of such school district. Where students from three (3) or more school districts are in attendance at one (1) attendance center by order of the respective school boards of the school districts, the use of the attendance center shall not be changed, altered or abolished except upon order of a majority of each of the school boards of the school districts from which pupils have been in attendance at the attendance center for the scholastic year; any acts, decisions, orders or resolutions by the school board of any such school district in conflict with this provision shall be null and void. If any change or alteration of the location of a school building or attendance center shall involve the construction of new school facilities, or the making of additions to, or the major repair, alteration or renovation of existing facilities, then such change or alteration shall not be effective until same shall have been submitted to and approved by the State Board of Education. There may be located and established in any school district as many school buildings and attendance centers as the educational needs of such district shall require. The school board of the school district shall have the power and authority to specify the attendance areas which shall be served by each school building or attendance center, and to change or alter same from time to time as necessity requires.

Sources: Codes, 1942, § 6328-05; Laws, 1953, Ex Sess, ch. 12, § 5; Laws, 1960, ch. 303; Laws, 1986, ch. 492, § 15, eff from and after July 1, 1987.



DESOTO COUNTY SCHOOLS

5 East South Street • Hernando, Mississippi 38632
662-429-5271 • fax 662-429-4198 • Website: www.desotocountyschools.org

"EXCELLENCE IS A COMMITMENT"

July 12, 2019

To: Cory Uselton
Milton Nichols
Michele Henley
Ann Jolley
Shelia Riley
Sarah Doss-Thomas

From: Rob Chase,
Chief Operations Officer

Re: Proposed New School Site-MDE

I have attached the application required by MDE to grant approval of a new school site for the future Lewisburg Middle School. Upon approval, the application along with a survey map and appraisals of the land will be sent to MDE. Thank you for your consideration of this matter.

Sincerely

Rob Chase, COO
DeSoto County Schools

EVALUATION OF PROPOSED NEW SCHOOL SITE

Regardless of the source of funds, new school facilities shall not be constructed on any new site until the site has been submitted to and approved by the Mississippi Board of Education. School sites will be approved according to the criteria established by the Mississippi Board of Education.

One of the most important steps in the new building program is the selection of an adequate site. The site should be convenient to streets and roads and should be planned so as to avoid traffic hazards. It is recommended that an elementary school should have 5 acres of land with one additional acre for each 100 students enrolled. A high school site should have at least 15 acres of land with one additional acre for each 100 students enrolled. The following minimum requirements must be met or exceptions noted and approved:

1. The site serves an area with enough children (present and future) to warrant its existence as a school center.
2. The site is located in a reasonable proximity to the present and future school population.
3. The site environment is free of the odors, dust, dirt, noise and smoke that are usually associated with factories, stockyards, railroads, mills, agricultural chemical aerial spraying, etc. The site is free of hazardous waste.
4. Public utilities such as electric power, water, sewerage, telephone, fire protection and gas service are available to the site.
5. The size of the site is sufficient to provide adequately for the educational program of both the present and the anticipated future.
6. The site grounds are at sufficient elevation to prevent flooding or standing water.
7. The sub-soil conditions are such that foundations, footings, athletic fields and lagoons can be built.
8. The site can be purchased at a fair market price. Copies of two certified appraisals of the land must be attached whenever the purchase price is greater than \$50,000.00. Please refer to MS Code 1972, Annotated, 37-7-301(aa).
9. A survey plat of the property is provided with this application.
10. The proposed new school site is plotted on the school district map and is provided with this application.
11. The site is accessible by both vehicles and pedestrians.

*An electronic version of this form is available at
http://www.healthyschoolsms.org/healthy_school_environment/buildinggrounds.htm.*

Exceptions to the above minimum requirements must be noted and explained in detail.

N/A

Additional information for proposed new school site:

1. **Physical location of the proposed site** Highway 305 at Ingram's Mill Rd. in Olive Branch, MS
2. **Grades to be housed/served** 6-8
3. **Student enrollment count** 950-1000
4. **Is the proposed new site located on 16th section land owned by the school district?**
 Yes No

If yes, how many acres are available? _____ Acres

If no, please describe the financing of the site purchase or explain how the land was acquired and the number of acres available for the proposed school site.
(attach documentation)

The land will be purchased with Certificate of Participations. The land contains between 77- 78 acres. The land was identified by DCS as a potential location. We then reached to out to land owners and begun discussion/negotiating for the land. See attached documentation regarding appraisals.

5. Will the school district have fee simple title?

Yes No

6. Is there organized opposition to the proposed site based on, but not limited to, the location of the school, acquisition of the land, safety issues, and/or community concerns?

Yes No

If yes, please explain.

7. Please provide justification of the need for the proposed school site.

Currently all Lewisburg schools are located on the same campus. Due to heavy growth in Lewisburg, traffic concerns have become an issue. Desoto County Schools feels it is best to move the Middle School campus to this alternate site to help alleviate the traffic concerns. With this growth, DCS has had to construct additional classrooms at the Primary, Elementary, and Middle Schools. Moving the middle school will allow DCS to reset the grades that are attending the primary and Elementary and allow us to take the current middle school building and create an Intermediate school. This construct of schools for the Lewisburg area should limit the need for further construction in this school zone.

CERTIFICATION

We, the President of the Board of Education/Trustees and the Superintendent of the Desoto County School District hereby certify to the Mississippi Board of Education that this Evaluation of Proposed New School Site for the construction of Lewisburg Middle School location at Hwy 305 at Ingraham's Mill Rd. Olive Branch (street or rural route, city) meets the minimum requirements previously stated or exceptions have been properly noted. Further, this Evaluation of Proposed New School Site has been duly adopted and approved by the Board of Education/Trustees of the Desoto County School District as evidenced by action taken by the Board of Education/Trustees of the Desoto County School District at an official board meeting held on the 18th Day of July, 2019.

President

D. Milton Nichols (Print)

[Signature] (Sign)

July 18, 2019 (Date)

Superintendent

Cory Uselton (Print)

[Signature] (Sign)

July 18, 2019 (Date)

School Board Attorney

James A. Keith (Print)

James A. Keith (Sign)

July 18, 2019 (Date)

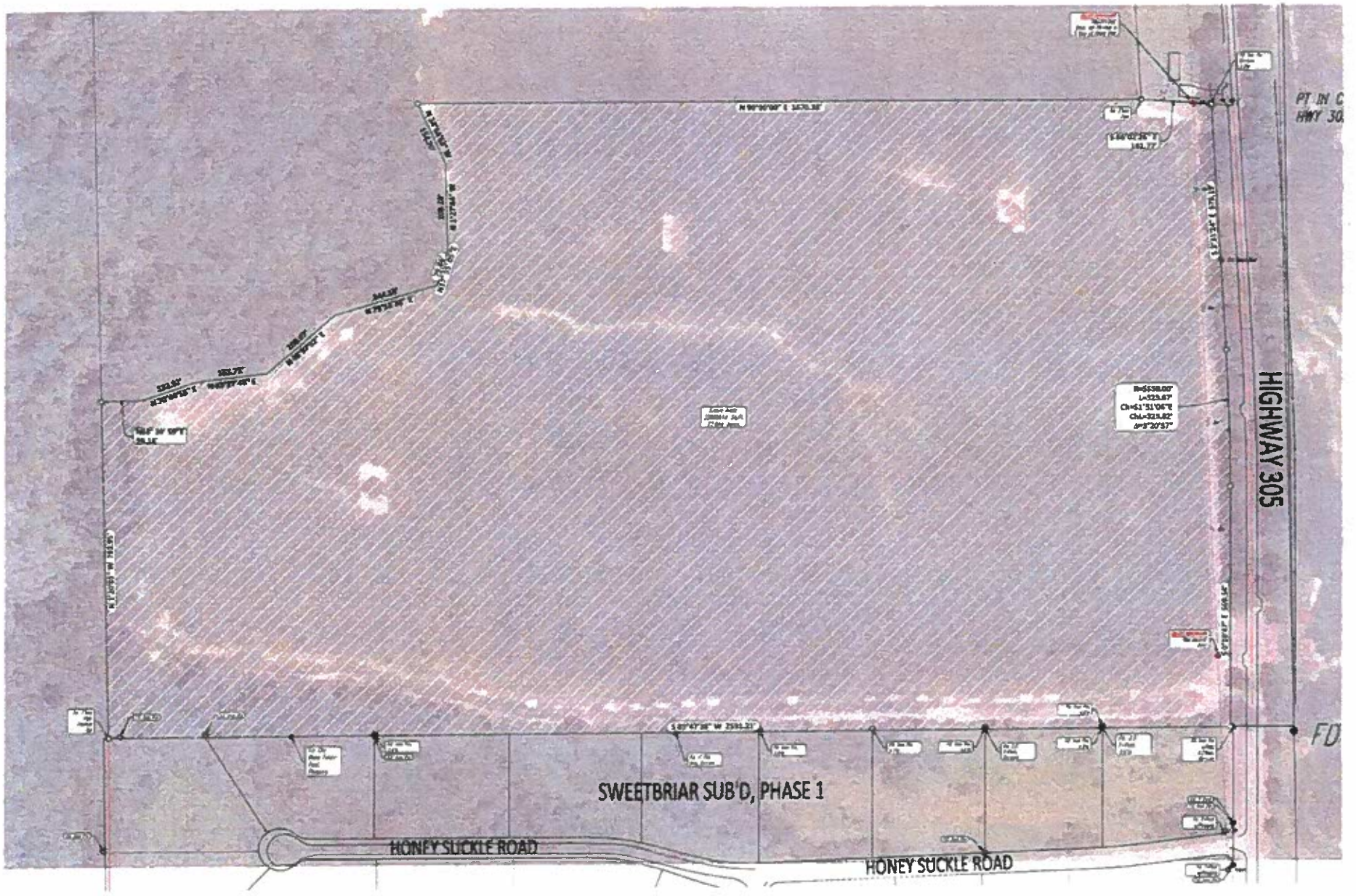
Beth B. Cross

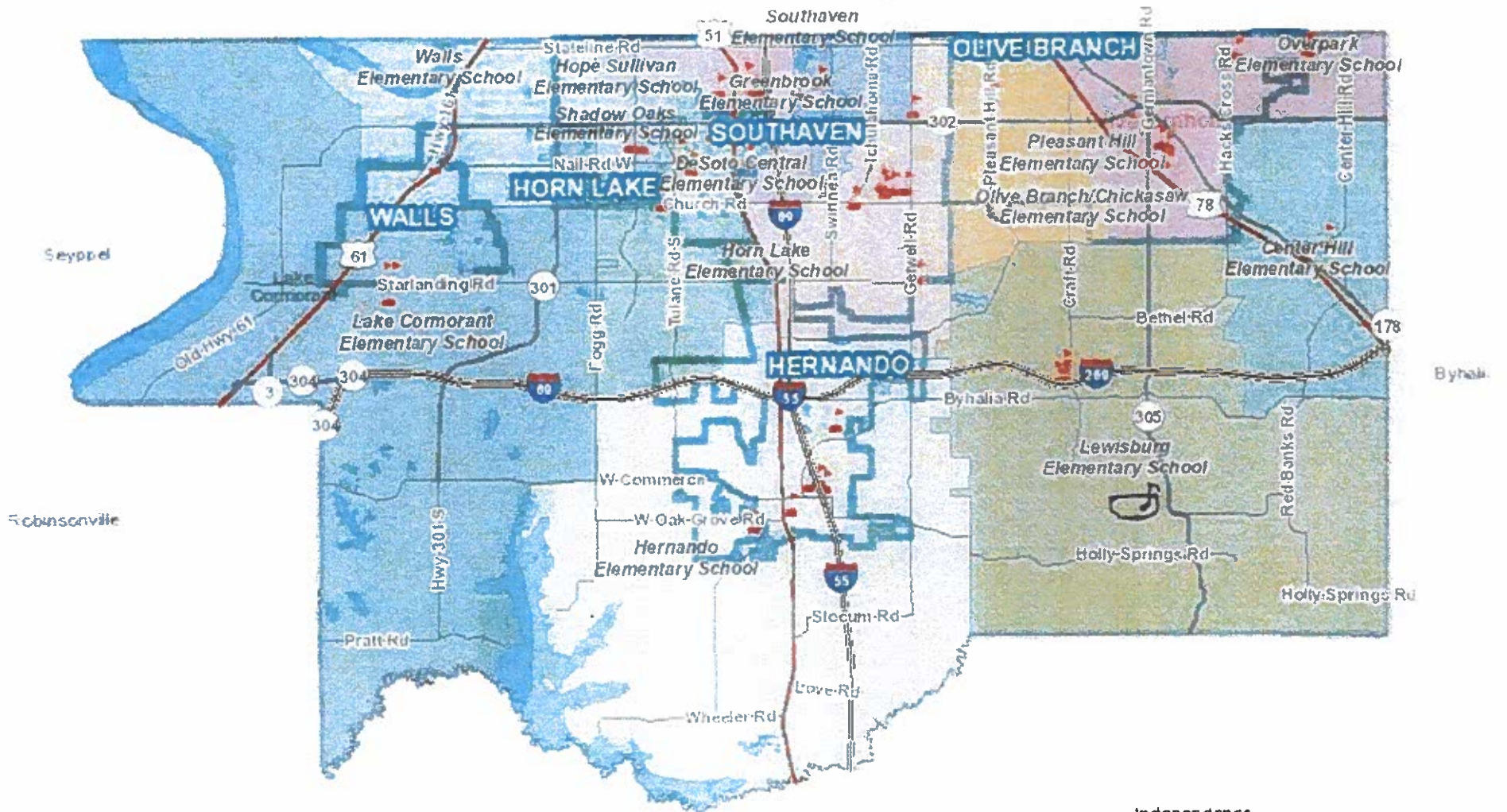
(SEAL)

Notary Public

Sworn to and subscribed before me on this the 18th day of July, 2019.



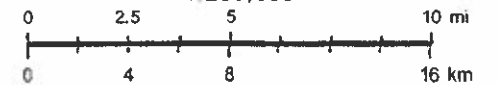




July 17, 2019

Independence

1:288,895



Esri, HERE, Garmin, (c) OpenStreetMap contributors, and the GIS user community