

**OFFICE OF CHIEF OF RESEARCH AND DEVELOPMENT**  
**Summary of State Board of Education Agenda Items**  
**April 21, 2016**

**OFFICE OF SCHOOL ACCOUNTABILITY**

13. Information: Report of the 2015 graduation rates for the state, district, and school levels [Goal 2 – MBE Strategic Plan]

Background Information: In accordance with MS Code 37-17-6 and 34 C.F.R. 200.19(b), the 2015 graduation rates were calculated following the four-year adjusted cohort method. This method determines the high school completion status of students four (4) years after entering the 9<sup>th</sup> grade for the first time. The 2015 rates are based on the students who entered the 9<sup>th</sup> grade for the first time during school year 2010-2011.

Also included are the 2015 dropout rates for all students and the graduation and dropout rates for students with disabilities.

This item references Goal 2 of the *Mississippi Board of Education 2016-2020 Strategic Plan*.

Information Only

Back-up material attached

## **2015 District Graduation and Dropout Rates**

### **Background**

In accordance with 34 C.F.R. 200.19(b) and MS Code 37-17-6, the 2015 graduation and dropout rates were calculated following the four-year adjusted cohort method. The method determines the high school completion status for students four (4) years after entering Grade 9 for the first time. The 2015 rates are based on students who entered Grade 9 for the first time during the school year (SY) 2010-11.

### **Enclosures**

The enclosed graduation rate data are included for all districts serving students who enrolled in Grade 9 for the first time during SY 2010-11.

- 1) 2015 District Graduation and Dropout Rates Summary
- 2) 2015 District Graduation Rates -
  - a. Sorted by District Name
  - b. Sorted by Percent (PCT)
- 3) 2015 District Dropout Rates -
  - a. Sorted by District Name
  - b. Sorted by Percent (PCT)
- 4) 2015 District Graduation Rates for Students with Disabilities -
  - a. Sorted by District Name
  - b. Sorted by Percent (PCT)

### **Technical Notes:**

- The report includes graduation and dropout rates for 162 districts that served students who enrolled in Grade 9 for the first time during SY 2010-11.
- The following district consolidated and/or closed after SY 2011-12: Drew. The following six (6) districts consolidated and/or closed after SY 2013-2014: Benoit, Clay County, Hinds AHS, Mound Bayou, Oktibbeha County, and Shaw.
- Clay County School District did not receive a graduation or dropout rate due to not serving students enrolled in Grade 12.
- N-counts are rounded to the nearest whole number.
- Two asterisks (\*\*) indicate the district did not meet the minimum n-count for the calculation of the graduation rate.
- Districts with a graduation or dropout rate less than five (5) percent or greater than ninety-eight (98) percent are suppressed.

## **Attachment 1:**

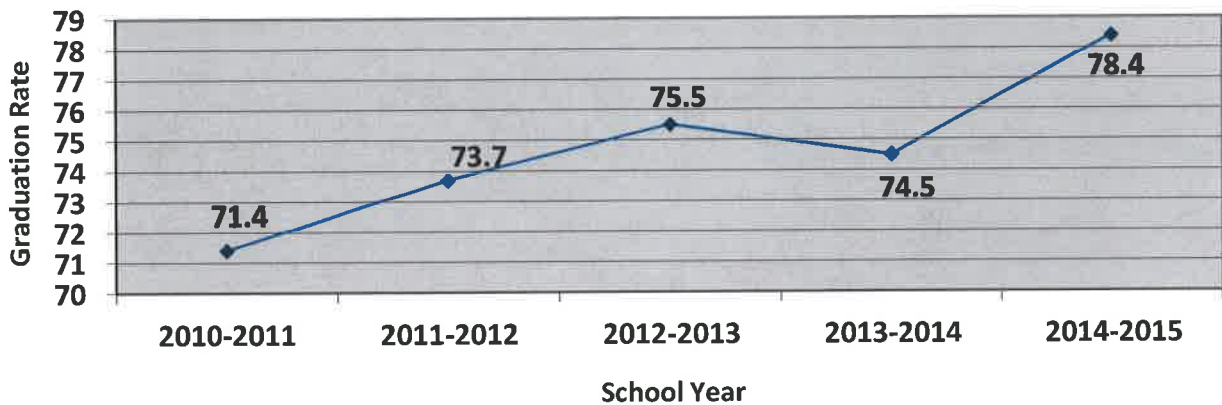
# **2015 Graduation and Dropout Rates Summary**

# 4-Year Graduation Rates

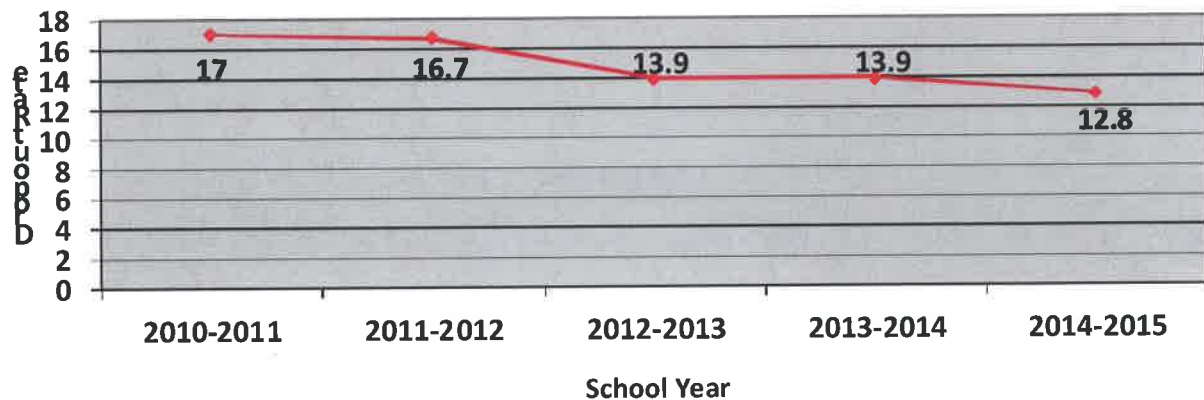
Division of Research and Development  
 J.P. Beaudoin, Ed.D., Chief

April 2016

## Statewide Graduation Rate 5-Year History



## Statewide Dropout Rate 5-Year History



# ***4-Year Graduation Rates***

**Division of Research and Development**

**J.P. Beaudoin, Ed.D., Chief**

**April 2016**

## **Comparison of the 2015 State Level Graduation and Dropout Rates For All Students and the Students with Disabilities**

	<b>Graduation Rates</b>	<b>Dropout Rates</b>
<b>All Students</b>	78.4%	12.8%
<b>Students with Disabilities</b>	27.5%	20.1%

# 4-Year Graduation Rates

Division of Research and Development

J.P. Beaudoin, Ed.D., Chief

April 2016

## Summary of 2015 District Level Graduation and Dropout Rates

### Graduation Rates

	Statewide Rate	Lowest District Rate	Highest District Rate
<b>Graduation Rates</b>	78.4%	1.1%	98.4%

### Dropout Rates

	Statewide Rate	Lowest District Rate	Highest District Rate
<b>Dropout Rates</b>	12.8%	0.0%	89.3%

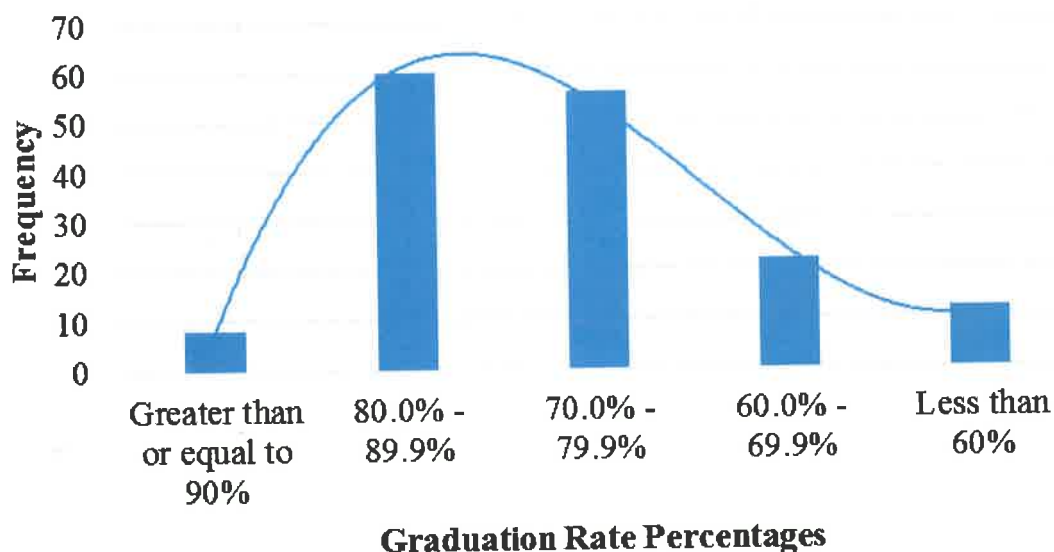
# 4-Year Graduation Rates

Division of Research and Development

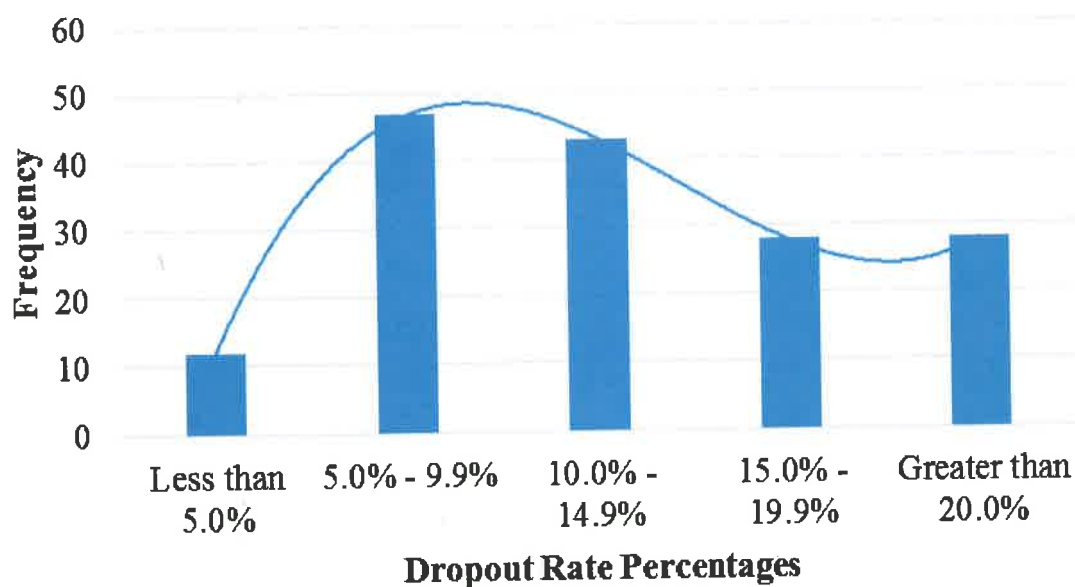
J.P. Beaudoin, Ed.D., Chief

April 2016

## 2015 District Level Graduation Rate



## 2015 District Level Dropout Rates



# 4-Year Graduation Rates

Division of Research and Development

J.P. Beaudoin, Ed.D., Chief

April 2016

## Top 10 Districts with the Highest Graduation Rates

Rank	District	Graduation Rate
1	MS School for Math and Science	98.4%
2	MS School for the Arts	97.5%
3	Benoit	94.1%
4	Enterprise	92.0%
5	Lamar County	90.8%
6	Holly Springs	90.6%
7	Booneville	90.5%
8	Columbia	90.1%
9	Newton County	89.7%
10	Bay St. Louis	89.4%

- Note that ranking does not include suppressed data.

## Top 10 Districts with the Lowest Dropout Rates

Rank	District	Dropout Rate
1	Benoit	0.0%
2	West Tallahatchie	0.0%
3	MS School for Math and Science	1.6%
4	MS School for the Arts	2.5%
5	Booneville	2.9%
6	Bay St. Louis	3.4%
7	North Panola	3.9%
8	Holly Springs	4.1%
9	Franklin County	4.3%
9	Lamar County	4.3%

- Note that ranking does not include suppressed data.



# ***4-Year Graduation Rates***

**Division of Research and Development**  
**J.P. Beaudoin, Ed.D., Chief**

April 2016

## **Summary of 2015 District Level Graduation Rates for Students with Disabilities**

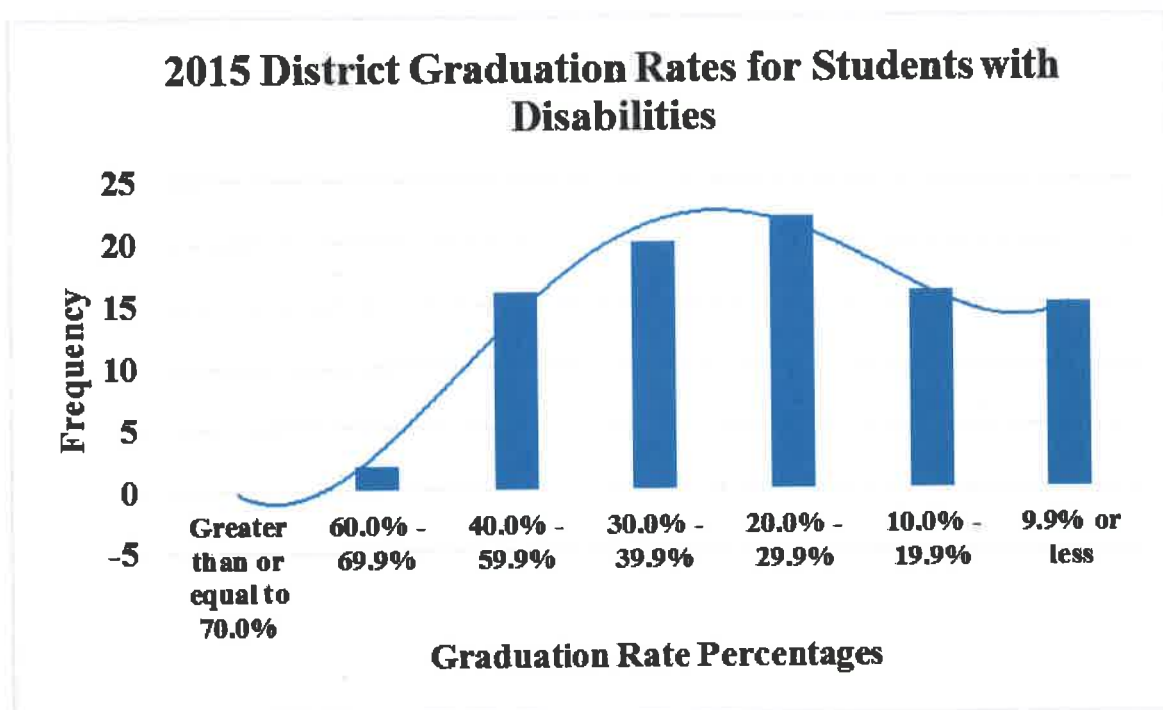
### **Graduation Rates**

	<b>Statewide Rate</b>	<b>Lowest District Rate</b>	<b>Highest District Rate</b>
<b>Graduation Rates</b>	27.5%	0.0%	63.3%

# 4-Year Graduation Rates

Division of Research and Development  
 J.P. Beaudoin, Ed.D., Chief

April 2016



# 4-Year Graduation Rates

Division of Research and Development

J.P. Beaudoin, Ed.D., Chief

April 2016

## Top 10 Districts with the Highest Graduation Rates for Students with Disabilities

Rank	District	Graduation Rate
1	Forrest AHS	63.3%
2	Bay St. Louis	60.3%
3	Lamar County	58.4%
3	Petal	58.4%
5	Itawamba County	58.1%
6	Hancock County	52.8%
7	Clinton	52.4%
8	DeSoto County	50.1%
9	Madison County	49.8%
10	Ocean Springs	49.3%

- Note that ranking does not include suppressed data.

## **Attachment 2:**

# **2015 District Graduation Rates Sorted by District Name**

# 4-Year Graduation Rates

Division of Research and Development

J.P. Beaudoin, Ed.D., Chief

April 2016

District Name	N-Count*	4-Year Graduation Rate
Aberdeen	101	68.7%
Alcorn	245	83.1%
Amite County	62	79.5%
Amory	114	86.6%
Attala County	56	71.1%
Baldwyn	66	83.2%
Bay St. Louis	113	89.4%
Benoit	17	94.1%
Benton County	84	79.9%
Biloxi	353	83.6%
Booneville	69	90.5%
Brookhaven	205	69.3%
Calhoun County	149	73.5%
Canton	201	52.4%
Carroll County	71	71.9%
Chickasaw County	37	64.1%
Choctaw County	81	78.5%
Claiborne County	98	69.3%
Clarksdale	191	73.4%
Cleveland	218	71.2%
Clinton	362	86.4%
Coahoma AHS	54	78.0%
Coahoma County	76	67.2%
Coffeeville	45	70.7%
Columbia	114	90.1%
Columbus	308	70.3%
Copiah County	167	80.3%
Corinth	137	86.3%
Covington County	207	65.5%
DeSoto County	2265	88.8%
Drew	13	46.2%
Durant	21	52.7%
East Jasper	79	69.6%
East Tallahatchie	84	79.3%
Ellisville State School	**	**

# 4-Year Graduation Rates

Division of Research and Development

J.P. Beaudoin, Ed.D., Chief

April 2016

District Name	N-Count*	4-Year Graduation Rate
Enterprise	67	92.0%
Forest City	77	80.4%
Forrest AHS	158	82.1%
Forrest County	62	82.3%
Franklin County	85	88.4%
George County	250	82.3%
Greene County	137	88.2%
Greenville	390	58.0%
Greenwood	187	70.3%
Grenada	260	76.9%
Gulfport	368	85.6%
Hancock County	306	89.2%
Harrison County	930	80.7%
Hattiesburg	327	69.5%
Hazlehurst City	93	76.8%
Hinds AHS	49	61.0%
Hinds County	457	80.6%
Hollandale	39	88.9%
Holly Springs	89	90.6%
Holmes County	212	78.8%
Houston Separate	122	75.6%
Hudspeth Center	**	**
Humphreys County	108	78.8%
Indianola	146	71.3%
Itawamba County	229	88.4%
Jackson County	630	82.9%
Jackson Public	1938	66.9%
Jefferson County	123	74.3%
Jefferson Davis	159	63.5%
Jones County	532	78.5%
Kemper County	58	81.0%
Kosciusko	150	84.2%
Lafayette County	169	86.2%
Lamar County	582	90.8%
Lauderdale County	452	79.8%

# 4-Year Graduation Rates

Division of Research and Development

J.P. Beaudoin, Ed.D., Chief

April 2016

District Name	N-Count*	4-Year Graduation Rate
Laurel	164	62.2%
Lawrence County	161	76.0%
Leake County	180	75.1%
Lee County	470	72.4%
Leflore County	186	68.8%
Leland	83	59.7%
Lincoln County	210	81.7%
Long Beach	209	87.7%
Louisville	213	73.4%
Lowndes County	345	85.2%
Lumberton	48	77.2%
Madison	867	88.9%
Magnolia Grove	**	**
Marion County	158	75.0%
Marshall County	203	77.7%
McComb	166	70.4%
Meridian	393	68.6%
Monroe County	147	82.4%
Montgomery County	21	64.7%
Moss Point	177	62.0%
Mound Bayou	48	76.4%
MS School for Math and Science	64	98.4%
MS School for the Arts	40	97.5%
MS School for the Blind	**	**
MS School for the Deaf	17	17.8%
MS State Hospital	**	**
Natchez-Adams	213	71.7%
Neshoba County	185	82.9%
Nettleton	88	73.1%
New Albany	122	82.1%
Newton City	76	74.9%
Newton County	128	89.7%
North Bolivar	52	77.0%
North Panola	87	85.8%
North Pike	133	76.6%



# 4-Year Graduation Rates

Division of Research and Development

J.P. Beaudoin, Ed.D., Chief

April 2016

District Name	N-Count*	4-Year Graduation Rate
North Tippah	74	74.6%
Noxubee County	127	78.5%
Oakley Youth Development Center	22	5.0%
Ocean Springs	386	85.2%
Okolona Separate	53	60.9%
Oktibbeha County	56	49.4%
Oxford	228	87.0%
Pascagoula	501	81.2%
Pass Christian	109	85.8%
Pearl	257	82.6%
Pearl River	230	79.3%
Perry County	97	66.7%
Petal	271	86.7%
Philadelphia	81	83.2%
Picayune	212	76.2%
Pontotoc City	154	81.1%
Pontotoc County	239	86.8%
Poplarville	138	81.1%
Prentiss County	159	82.3%
Quitman	115	84.1%
Quitman County	91	75.7%
Rankin County	1277	85.4%
Richton	50	82.0%
Roger Amos McMurtry	10	8.4%
Scott County	234	81.3%
Senatobia	123	81.9%
Shaw	48	85.4%
Simpson County	255	71.2%
Smith County	179	77.6%
South Delta	67	72.4%
South Panola	283	73.8%
South Pike	86	81.9%
South Tippah	186	85.6%
Starkville	276	77.1%
Stone County	157	70.8%



# 4-Year Graduation Rates

Division of Research and Development

J.P. Beaudoin, Ed.D., Chief

April 2016

District Name	N-Count*	4-Year Graduation Rate
Stovall SPED Complex	**	**
Sunflower County	101	59.0%
Tate County	180	70.7%
Tishomingo County	219	83.5%
Tunica County	127	68.0%
Tupelo	517	78.7%
Union City	66	84.8%
Union County	173	87.5%
Vicksburg-Warren	573	65.9%
Walthall County	146	67.1%
Water Valley	73	84.7%
Wayne County	239	74.4%
Webster County	125	87.3%
West Bolivar	73	72.1%
West Jasper	96	83.1%
West Point	211	83.5%
West Tallahatchie	41	79.6%
Western Line	139	73.3%
Wilkinson County	78	73.3%
Winona	80	79.0%
Yazoo City	147	61.1%
Yazoo County	125	70.7%
<b>State of Mississippi</b>	<b>32448</b>	<b>78.4%</b>

\*N-Counts are rounded to the nearest whole number.

\*\*indicates the district did not meet the minimum n-count

Rates below 5% are reported as 5%.

## **Attachment 3:**

# **2015 District Graduation Rates Sorted by Percentage (PCT)**

- Note that ranking does not include suppressed data.

# 4-Year Graduation Rates

Division of Research and Development

J.P. Beaudoin, Ed.D., Chief

April 2016

District Name	N-Count*	4-Year Graduation Rate
MS School for Math and Science	64	98.4%
MS School for the Arts	40	97.5%
Benoit	17	94.1%
Enterprise	67	92.0%
Lamar County	582	90.8%
Holly Springs	89	90.6%
Booneville	69	90.5%
Columbia	114	90.1%
Newton County	128	89.7%
Bay St. Louis	113	89.4%
Hancock County	306	89.2%
Hollandale	39	88.9%
Madison	867	88.9%
DeSoto County	2265	88.8%
Franklin County	85	88.4%
Itawamba County	229	88.4%
Greene County	137	88.2%
Long Beach	209	87.7%
Union County	173	87.5%
Webster County	125	87.3%
Oxford	228	87.0%
Pontotoc County	239	86.8%
Petal	271	86.7%
Amory	114	86.6%
Clinton	362	86.4%
Corinth	137	86.3%
Lafayette County	169	86.2%
North Panola	87	85.8%
Pass Christian	109	85.8%
Gulfport	368	85.6%
South Tiptah	186	85.6%
Rankin County	1277	85.4%
Shaw	48	85.4%
Lowndes County	345	85.2%
Ocean Springs	386	85.2%

Division of Research and Development

Attachment 3: 2015 District Graduation Rates Sorted by Percentage (PCT)

April 18, 2016

# 4-Year Graduation Rates

Division of Research and Development

J.P. Beaudoin, Ed.D., Chief

April 2016

District Name	N-Count*	4-Year Graduation Rate
Union City	66	84.8%
Water Valley	73	84.7%
Kosciusko	150	84.2%
Quitman	115	84.1%
Biloxi	353	83.6%
Tishomingo County	219	83.5%
West Point	211	83.5%
Baldwyn	66	83.2%
Philadelphia	81	83.2%
Alcorn	245	83.1%
West Jasper	96	83.1%
Jackson County	630	82.9%
Neshoba County	185	82.9%
Pearl	257	82.6%
Monroe County	147	82.4%
Forrest County	62	82.3%
George County	250	82.3%
Prentiss County	159	82.3%
Forrest AHS	158	82.1%
New Albany	122	82.1%
Richton	50	82.0%
Senatobia	123	81.9%
South Pike	86	81.9%
Lincoln County	210	81.7%
Scott County	234	81.3%
Pascagoula	501	81.2%
Pontotoc City	154	81.1%
Poplarville	138	81.1%
Kemper County	58	81.0%
Harrison County	930	80.7%
Hinds County	457	80.6%
Forest City	77	80.4%
Copiah County	167	80.3%
Benton County	84	79.9%
Lauderdale County	452	79.8%

# 4-Year Graduation Rates

Division of Research and Development  
J.P. Beaudoin, Ed.D., Chief

April 2016

District Name	N-Count*	4-Year Graduation Rate
West Tallahatchie	41	79.6%
Amite County	62	79.5%
East Tallahatchie	84	79.3%
Pearl River	230	79.3%
Winona	80	79.0%
Holmes County	212	78.8%
Humphreys County	108	78.8%
Tupelo	517	78.7%
Choctaw County	81	78.5%
Jones County	532	78.5%
Noxubee County	127	78.5%
Coahoma AHS	54	78.0%
Marshall County	203	77.7%
Smith County	179	77.6%
Lumberton	48	77.2%
Starkville	276	77.1%
North Bolivar	52	77.0%
Grenada	260	76.9%
Hazlehurst City	93	76.8%
North Pike	133	76.6%
Mound Bayou	48	76.4%
Picayune	212	76.2%
Lawrence County	161	76.0%
Quitman County	91	75.7%
Houston Separate	122	75.6%
Leake County	180	75.1%
Marion County	158	75.0%
Newton City	76	74.9%
North Tippah	74	74.6%
Wayne County	239	74.4%
Jefferson County	123	74.3%
South Panola	283	73.8%
Calhoun County	149	73.5%
Clarksdale	191	73.4%
Louisville	213	73.4%

# 4-Year Graduation Rates

Division of Research and Development

J.P. Beaudoin, Ed.D., Chief

April 2016

District Name	N-Count*	4-Year Graduation Rate
Western Line	139	73.3%
Wilkinson County	78	73.3%
Nettleton	88	73.1%
Lee County	470	72.4%
South Delta	67	72.4%
West Bolivar	73	72.1%
Carroll County	71	71.9%
Natchez-Adams	213	71.7%
Indianola	146	71.3%
Cleveland	218	71.2%
Simpson County	255	71.2%
Attala County	56	71.1%
Stone County	157	70.8%
Coffeeville	45	70.7%
Tate County	180	70.7%
Yazoo County	125	70.7%
McComb	166	70.4%
Columbus	308	70.3%
Greenwood	187	70.3%
East Jasper	79	69.6%
Hattiesburg	327	69.5%
Brookhaven	205	69.3%
Claiborne County	98	69.3%
Leflore County	186	68.8%
Aberdeen	101	68.7%
Meridian	393	68.6%
Tunica County	127	68.0%
Coahoma County	76	67.2%
Walthall County	146	67.1%
Jackson Public	1938	66.9%
Perry County	97	66.7%
Vicksburg-Warren	573	65.9%
Covington County	207	65.5%
Montgomery County	21	64.7%
Chickasaw County	37	64.1%



# 4-Year Graduation Rates

Division of Research and Development  
J.P. Beaudoin, Ed.D., Chief

April 2016

District Name	N-Count*	4-Year Graduation Rate
Jefferson Davis	159	63.5%
Laurel	164	62.2%
Moss Point	177	62.0%
Yazoo City	147	61.1%
Hinds AHS	49	61.0%
Okolona Separate	53	60.9%
Leland	83	59.7%
Sunflower County	101	59.0%
Greenville	390	58.0%
Durant	21	52.7%
Canton	201	52.4%
Oktibbeha County	56	49.4%
Drew School District	13	46.2%
MS School for the Deaf	17	17.8%
Roger Amos McMurtry	10	8.4%
Oakley Youth Development Center	22	5.0%
Stovall SPED Complex	**	**
MS School for the Blind	**	**
Hudspeth Center	**	**
Magnolia Grove	**	**
Ellisville State School	**	**
MS State Hospital	**	**
<b>State of Mississippi</b>	<b>32448</b>	<b>78.4%</b>

\*N-Counts are rounded to the nearest whole number.

\*\*indicates the district did not meet the minimum n-count

Rates below 5% are reported as 5%.

## **Attachment 4:**

# **2015 District Dropout Rates Sorted by District Name**



# 4-Year Graduation Rates

Division of Research and Development  
J.P. Beaudoin, Ed.D., Chief

April 2016

District Name	N-Count*	4-Year Dropout Rate
Aberdeen	101	20.2%
Alcorn	245	7.2%
Amite County	62	15.5%
Amory	114	7.1%
Attala County	56	13.0%
Baldwyn	66	12.6%
Bay St. Louis	113	3.4%
Benoit	17	0.0%
Benton County	84	6.6%
Biloxi	353	11.2%
Booneville	69	2.9%
Brookhaven	205	21.6%
Calhoun County	149	17.8%
Canton	201	25.1%
Carroll County	71	18.4%
Chickasaw County	37	6.4%
Choctaw County	81	10.3%
Claiborne County	98	16.1%
Clarksdale	191	21.7%
Cleveland	218	18.9%
Clinton	362	9.5%
Coahoma AHS	54	17.1%
Coahoma County	76	18.0%
Coffeeville	45	16.3%
Columbia	114	6.9%
Columbus	308	17.1%
Copiah County	167	15.4%
Corinth	137	5.1%
Covington County	207	19.0%
DeSoto County	2265	5.3%
Drew	13	14.8%
Durant	21	28.6%
East Jasper	79	12.8%

# 4-Year Graduation Rates

Division of Research and Development

J.P. Beaudoin, Ed.D., Chief

April 2016

District Name	N-Count*	4-Year Dropout Rate
East Tallahatchie	84	12.3%
Ellisville State School	**	**
Enterprise	67	5.0%
Forest City	77	7.9%
Forrest AHS	158	14.9%
Forrest County	62	10.6%
Franklin County	85	4.3%
George County	250	9.4%
Greene County	137	4.7%
Greenville	390	27.9%
Greenwood	187	16.3%
Grenada	260	8.5%
Gulfport	368	6.2%
Hancock County	306	6.1%
Harrison County	930	11.8%
Hattiesburg	327	14.1%
Hazlehurst City	93	17.6%
Hinds AHS	49	26.5%
Hinds County	457	9.1%
Hollandale	39	10.9%
Holly Springs	89	4.1%
Holmes County	212	13.0%
Houston Separate	122	14.5%
Hudspeth Center	**	**
Humphreys County	108	13.8%
Indianola	146	21.3%
Itawamba County	229	5.6%
Jackson County	630	10.2%
Jackson Public	1938	23.5%
Jefferson County	123	9.8%
Jefferson Davis	159	22.7%
Jones County	532	15.6%
Kemper County	58	5.6%

# 4-Year Graduation Rates

Division of Research and Development  
J.P. Beaudoin, Ed.D., Chief

April 2016

District Name	N-Count*	4-Year Dropout Rate
Kosciusko	150	5.8%
Lafayette County	169	6.8%
Lamar County	582	4.3%
Lauderdale County	452	12.7%
Laurel	164	27.6%
Lawrence County	161	15.6%
Leake County	180	10.2%
Lee County	470	19.8%
Leflore County	186	19.6%
Leland	83	27.6%
Lincoln County	210	12.1%
Long Beach	209	5.6%
Louisville	213	18.9%
Lowndes County	345	8.6%
Lumberton	48	11.6%
Madison	867	7.3%
Magnolia Grove SPED	**	**
Marion County	158	12.4%
Marshall County	203	13.2%
McComb	166	21.2%
Meridian	393	25.3%
Monroe County	147	6.4%
Montgomery County	21	30.5%
Moss Point	177	24.1%
Mound Bayou	48	8.2%
MS School for Math and Science	64	1.6%
MS School for the Arts	40	2.5%
MS School for the Blind	**	**
MS School for the Deaf	17	11.8%
MS State Hospital	**	**
Natchez-Adams	213	15.9%
Neshoba County	185	13.5%
Nettleton	88	18.0%

# 4-Year Graduation Rates

Division of Research and Development  
J.P. Beaudoin, Ed.D., Chief

April 2016

District Name	N-Count*	4-Year Dropout Rate
New Albany	122	6.0%
Newton City	76	9.6%
Newton County	128	4.8%
North Bolivar	52	13.6%
North Panola	87	3.9%
North Pike	133	21.2%
North Tippah	74	11.7%
Noxubee County	127	13.7%
Oakley Youth Development Center	22	89.3%
Ocean Springs	386	8.3%
Okolona Separate	53	18.2%
Oktibbeha County	56	22.4%
Oxford	228	7.8%
Pascagoula	501	10.3%
Pass Christian	109	5.5%
Pearl	257	9.6%
Pearl River	230	14.5%
Perry County	97	26.3%
Petal	271	8.2%
Philadelphia	81	11.8%
Picayune	212	12.6%
Pontotoc City	154	14.2%
Pontotoc County	239	8.0%
Poplarville	138	15.5%
Prentiss County	159	7.4%
Quitman	115	5.4%
Quitman County	91	10.8%
Rankin County	1277	8.0%
Richton	50	16.2%
Roger Amos McMurtry	10	70.9%
Scott County	234	8.1%
Senatobia	123	8.6%
Shaw	48	10.7%

# 4-Year Graduation Rates

Division of Research and Development

J.P. Beaudoin, Ed.D., Chief

April 2016

District Name	N-Count*	4-Year Dropout Rate
Simpson County	255	13.2%
Smith County	179	9.0%
South Delta	67	14.5%
South Panola	283	12.3%
South Pike	86	14.9%
South Tippah	186	6.5%
Starkville	276	10.1%
Stone County	157	16.5%
Stovall SPED Complex	**	**
Sunflower County	101	14.0%
Tate County	180	17.3%
Tishomingo County	219	7.0%
Tunica County	127	21.9%
Tupelo	517	11.5%
Union City	66	9.1%
Union County	173	8.4%
Vicksburg-Warren	573	20.7%
Walthall County	146	22.3%
Water Valley	73	7.2%
Wayne County	239	13.7%
Webster County	125	6.4%
West Bolivar	73	19.7%
West Jasper	96	5.6%
West Point	211	9.7%
West Tallahatchie	41	0.0%
Western Line	139	18.5%
Wilkinson County	78	15.2%
Winona	80	12.9%
Yazoo City	147	21.8%
Yazoo County	125	22.3%
<b>State of Mississippi</b>	<b>32448</b>	<b>12.8%</b>

\*N-Counts are rounded to the nearest whole number.

\*\*indicates the district did not meet the minimum n-count

Division of Research and Development

Attachment 4: 2015 District Dropout Rates Sorted by District Name

April 18, 2016

# **Attachment 5:**

## **2015 District Dropout Rates Sorted by Percentage (PCT)**

- Note that ranking does not include suppressed data.



# 4-Year Graduation Rates

Division of Research and Development  
J.P. Beaudoin, Ed.D., Chief

April 2016

District Name	N-Count*	4-Year Dropout Rate
Benoit	17	0.0%
West Tallahatchie	41	0.0%
MS School for Math and Science	64	1.6%
MS School for the Arts	40	2.5%
Booneville	69	2.9%
Bay St. Louis	113	3.4%
North Panola	87	3.9%
Holly Springs	89	4.1%
Franklin County	85	4.3%
Lamar County	582	4.3%
Greene County	137	4.7%
Newton County	128	4.8%
Enterprise	67	5.0%
Corinth	137	5.1%
DeSoto County	2265	5.3%
Quitman	115	5.4%
Pass Christian	109	5.5%
Itawamba County	229	5.6%
Kemper County	58	5.6%
Long Beach	209	5.6%
West Jasper	96	5.6%
Kosciusko	150	5.8%
New Albany	122	6.0%
Hancock County	306	6.1%
Gulfport	368	6.2%
Chickasaw County	37	6.4%
Monroe County	147	6.4%
Webster County	125	6.4%
South Tippah	186	6.5%
Benton County	84	6.6%
Lafayette County	169	6.8%
Columbia	114	6.9%
Tishomingo County	219	7.0%

# 4-Year Graduation Rates

Division of Research and Development

J.P. Beaudoin, Ed.D., Chief

April 2016

District Name	N-Count*	4-Year Dropout Rate
Amory	114	7.1%
Alcorn	245	7.2%
Water Valley	73	7.2%
Madison	867	7.3%
Prentiss County	159	7.4%
Oxford	228	7.8%
Forest City	77	7.9%
Pontotoc County	239	8.0%
Rankin County	1277	8.0%
Scott County	234	8.1%
Mound Bayou	48	8.2%
Petal	271	8.2%
Ocean Springs	386	8.3%
Union County	173	8.4%
Grenada	260	8.5%
Lowndes County	345	8.6%
Senatobia	123	8.6%
Smith County	179	9.0%
Hinds County	457	9.1%
Union City	66	9.1%
George County	250	9.4%
Clinton	362	9.5%
Newton City	76	9.6%
Pearl	257	9.6%
West Point	211	9.7%
Jefferson County	123	9.8%
Starkville	276	10.1%
Jackson County	630	10.2%
Leake County	180	10.2%
Choctaw County	81	10.3%
Pascagoula	501	10.3%
Forrest County	62	10.6%
Shaw	48	10.7%



# 4-Year Graduation Rates

Division of Research and Development  
J.P. Beaudoin, Ed.D., Chief

April 2016

District Name	N-Count*	4-Year Dropout Rate
Quitman County	91	10.8%
Hollandale	39	10.9%
Biloxi	353	11.2%
Tupelo	517	11.5%
Lumberton	48	11.6%
North Tippah	74	11.7%
Harrison County	930	11.8%
MS School for the Deaf	17	11.8%
Philadelphia	81	11.8%
Lincoln County	210	12.1%
East Tallahatchie	84	12.3%
South Panola	283	12.3%
Marion County	158	12.4%
Baldwyn	66	12.6%
Picayune	212	12.6%
Lauderdale County	452	12.7%
East Jasper	79	12.8%
Winona	80	12.9%
Attala County	56	13.0%
Holmes County	212	13.0%
Marshall County	203	13.2%
Simpson County	255	13.2%
Neshoba County	185	13.5%
North Bolivar	52	13.6%
Noxubee County	127	13.7%
Wayne County	239	13.7%
Humphreys County	108	13.8%
Sunflower County	101	14.0%
Hattiesburg	327	14.1%
Pontotoc City	154	14.2%
Houston Separate	122	14.5%
Pearl River	230	14.5%
South Delta	67	14.5%

# 4-Year Graduation Rates

Division of Research and Development  
J.P. Beaudoin, Ed.D., Chief

April 2016

District Name	N-Count*	4-Year Dropout Rate
Forrest AHS	158	14.9%
South Pike	86	14.9%
Drew School	13	14.8%
Wilkinson County	78	15.2%
Copiah County	167	15.4%
Amite County	62	15.5%
Poplarville	138	15.5%
Jones County	532	15.6%
Lawrence County	161	15.6%
Natchez-Adams	213	15.9%
Claiborne County	98	16.1%
Richton	50	16.2%
Coffeeville	45	16.3%
Greenwood	187	16.3%
Stone County	157	16.5%
Coahoma AHS	54	17.1%
Columbus	308	17.1%
Tate County	180	17.3%
Hazlehurst City	93	17.6%
Calhoun County	149	17.8%
Coahoma County	76	18.0%
Nettleton	88	18.0%
Okolona Separate	53	18.2%
Carroll County	71	18.4%
Western Line	139	18.5%
Cleveland	218	18.9%
Louisville	213	18.9%
Covington County	207	19.0%
Leflore County	186	19.6%
West Bolivar	73	19.7%
Lee County	470	19.8%
Aberdeen	101	20.2%
Vicksburg-Warren	573	20.7%

# 4-Year Graduation Rates

Division of Research and Development  
J.P. Beaudoin, Ed.D., Chief

April 2016

District Name	N-Count*	4-Year Dropout Rate
McComb	166	21.2%
North Pike	133	21.2%
Indianola	146	21.3%
Brookhaven	205	21.6%
Clarksdale	191	21.7%
Yazoo City	147	21.8%
Tunica County	127	21.9%
Walthall County	146	22.3%
Yazoo County	125	22.3%
Oktibbeha County	56	22.4%
Jefferson Davis	159	22.7%
Jackson Public	1938	23.5%
Moss Point	177	24.1%
Canton	201	25.1%
Meridian	393	25.3%
Perry County	97	26.3%
Hinds AHS	49	26.5%
Laurel	164	27.6%
Leland	83	27.6%
Greenville	390	27.9%
Durant	21	28.6%
Montgomery County	21	30.5%
Roger Amos McMurtry	10	70.9%
Oakley Youth Development Center	22	89.3%
Stovall SPED Complex	**	**
MS School for the Blind	**	**
Hudspeth Center	**	**
Magnolia Grove	**	**
Ellisville State School	**	**
MS State Hospital	**	**
<b>State of Mississippi</b>	<b>32448</b>	<b>12.8%</b>

\*N-Counts are rounded to the nearest whole number.

\*\*indicates the district did not meet the minimum n-count

# **Attachment 6:**

## **2015 District Graduation Rates for Students with Disabilities Sorted by District Name**

# 4-Year Graduation Rates

Division of Research and Development

J.P. Beaudoin, Ed.D., Chief

April 2016

District Name	N-Count*	4-Year Graduation Rate for Students with Disabilities
Aberdeen	14	35.1%
Alcorn	26	19.3%
Amite County	**	**
Amory	**	**
Attala County	**	**
Baldwyn	**	**
Bay St. Louis	16	60.3%
Benoit	**	**
Benton County	**	**
Biloxi	29	20.9%
Booneville	**	**
Brookhaven	14	37.1%
Calhoun County	18	32.7%
Canton	31	5.0%
Carroll County	**	**
Chickasaw County	**	**
Choctaw County	**	**
Claiborne County	**	**
Clarksdale	**	**
Cleveland	17	5.0%
Clinton	23	52.4%
Coahoma AHS	**	**
Coahoma County	**	**
Coffeeville	**	**
Columbia	**	**
Columbus	35	19.4%
Copiah County	**	**
Corinth	14	43.3%
Covington County	29	5.0%
DeSoto County	206	50.1%
Drew School	**	**
Durant	**	**
East Jasper	14	7.1%

# 4-Year Graduation Rates

Division of Research and Development

J.P. Beaudoin, Ed.D., Chief

April 2016

District Name	N-Count*	4-Year Graduation Rate for Students with Disabilities
East Tallahatchie	**	**
Ellisville State School	**	**
Enterprise	**	**
Forest City	**	**
Forrest AHS	14	63.3%
Forrest County	**	**
Franklin County	10	38.5%
George County	12	42.6%
Greene County	**	**
Greenville	53	5.3%
Greenwood	13	7.5%
Grenada	24	5.0%
Gulfport	33	30.9%
Hancock County	27	52.8%
Harrison County	74	16.6%
Hattiesburg	48	28.2%
Hazlehurst City	**	**
Hinds AHS	**	**
Hinds County	51	15.4%
Hollandale	**	**
Holly Springs	**	**
Holmes County	16	18.8%
Houston Separate	11	9.3%
Hudspeth Center	**	**
Humphreys County	**	**
Indianola	**	**
Itawamba County	22	58.1%
Jackson County	45	27.4%
Jackson Public	211	18.6%
Jefferson County	**	**
Jefferson Davis	18	12.6%
Jones County	39	24.9%
Kemper County	**	**

Division of Research and Development

Attachment 6: 2015 District Graduation Rates for Students with Disabilities Sorted by Dist.

April 18, 2016



# 4-Year Graduation Rates

Division of Research and Development

J.P. Beaudoin, Ed.D., Chief

April 2016

District Name	N-Count*	4-Year Graduation Rate for Students with Disabilities
Kosciusko	16	17.4%
Lafayette County	20	39.5%
Lamar County	56	58.4%
Lauderdale County	32	32.0%
Laurel	11	38.5%
Lawrence County	12	25.2%
Leake County	11	18.4%
Lee County	56	26.5%
Leflore County	16	41.4%
Leland	**	**
Lincoln County	15	40.3%
Long Beach	19	39.6%
Louisville	20	23.3%
Lowndes County	17	39.3%
Lumberton	**	**
Madison	46	49.8%
Magnolia Grove	**	**
Marion County	22	18.7%
Marshall County	19	5.0%
McComb	19	21.4%
Meridian	27	22.8%
Monroe County	15	33.3%
Montgomery County	**	**
Moss Point	23	21.8%
Mound Bayou	**	**
MS School for Math and Science	**	**
MS School for the Arts	**	**
MS School for the Blind	**	**
MS School for the Deaf	17	17.8%
MS State Hospital	**	**
Natchez-Adams	27	7.5%
Neshoba County	**	**
Nettleton	**	**

# 4-Year Graduation Rates

Division of Research and Development  
J.P. Beaudoin, Ed.D., Chief

April 2016

District Name	N-Count*	4-Year Graduation Rate for Students with Disabilities
New Albany	16	25.2%
Newton City	**	**
Newton County	11	44.0%
North Bolivar	**	**
North Panola	11	9.1%
North Pike	**	**
North Tippah	**	**
Noxubee County	15	26.7%
Oakley Youth Development Center	**	**
Ocean Springs	25	49.3%
Okolona Separate	**	**
Oktibbeha County	10	20.8%
Oxford	20	39.5%
Pascagoula	50	33.5%
Pass Christian	**	**
Pearl	26	30.3%
Pearl River	24	28.3%
Perry County	**	**
Petal	36	58.4%
Philadelphia	**	**
Picayune	22	32.3%
Pontotoc City	**	**
Pontotoc County	18	43.4%
Poplarville	**	**
Prentiss County	12	44.8%
Quitman	11	17.3%
Quitman County	14	27.0%
Rankin County	82	31.6%
Richton	**	**
Roger Amos McMurtry	**	**
Scott County	21	28.3%
Senatobia	12	26.0%
Shaw	**	**



# 4-Year Graduation Rates

Division of Research and Development

J.P. Beaudoin, Ed.D., Chief

April 2016

District Name	N-Count*	4-Year Graduation Rate for Students with Disabilities
Simpson County	29	13.6%
Smith County	25	28.2%
South Delta	10	29.3%
South Panola	27	25.8%
South Pike	**	**
South Tippah	13	30.5%
Starkville	16	33.0%
Stone County	21	23.7%
Stovall SPED Complex	**	**
Sunflower County	14	6.2%
Tate County	15	13.4%
Tishomingo County	18	16.3%
Tunica County	**	**
Tupelo	58	33.8%
Union City	**	**
Union County	**	**
Vicksburg-Warren	64	11.4%
Walthall County	15	5.0%
Water Valley	**	**
Wayne County	24	5.0%
Webster County	10	41.0%
West Bolivar	**	**
West Jasper	**	**
West Point	15	20.1%
West Tallahatchie	**	**
Western Line	11	38.8%
Wilkinson County	**	**
Winona	**	**
Yazoo City	13	7.5%
Yazoo County	12	16.0%
<b>State of Mississippi</b>	<b>2960</b>	<b>27.5%</b>

\*N-Counts are rounded to the nearest whole number

\*\*Indicates the district did not meet the minimum n-count for the calculation of the graduation rate.

Rates below 5% are reported as 5%.

Division of Research and Development

Attachment 6: 2015 District Graduation Rates for Students with Disabilities Sorted by Dist.

April 18, 2016

# ***4-Year Graduation Rates***

**Division of Research and Development  
J.P. Beaudoin, Ed.D., Chief**

**April 2016**

## **Attachment 7:**

# **2015 District Graduation Rates for Students with Disabilities Sorted by Percentage (PCT)**

- Note that ranking does not include suppressed data.

# 4-Year Graduation Rates

Division of Research and Development

J.P. Beaudoin, Ed.D., Chief

April 2016

District Name	N-Count*	4-Year Graduation Rate for Students with Disabilities
Forrest AHS	14	63.3%
Bay St. Louis	16	60.3%
Lamar County	56	58.4%
Petal	36	58.4%
Itawamba County	22	58.1%
Hancock County	27	52.8%
Clinton	23	52.4%
DeSoto County	206	50.1%
Madison	46	49.8%
Ocean Springs	25	49.3%
Prentiss County	12	44.8%
Newton County	11	44.0%
Pontotoc County	18	43.4%
Corinth	14	43.3%
George County	12	42.6%
Leflore County	16	41.4%
Webster County	10	41.0%
Lincoln County	15	40.3%
Long Beach	19	39.6%
Lafayette County	20	39.5%
Oxford	20	39.5%
Lowndes County	17	39.3%
Western Line	11	38.8%
Laurel	11	38.5%
Franklin County	10	38.5%
Brookhaven	14	37.1%
Aberdeen	14	35.1%
Tupelo	58	33.8%
Pascagoula	50	33.5%
Monroe County	15	33.3%
Starkville	16	33.0%
Calhoun County	18	32.7%
Picayune	22	32.3%
Lauderdale County	32	32.0%

Division of Research and Development

Attachment 7: 2015 District Graduation Rates for Students with Disabilities Sorted by PCT

April 18, 2016

# 4-Year Graduation Rates

Division of Research and Development

J.P. Beaudoin, Ed.D., Chief

April 2016

District Name	N-Count*	4-Year Graduation Rate for Students with Disabilities
Rankin County	82	31.6%
Gulfport	33	30.9%
South Tippah	13	30.5%
Pearl	26	30.3%
South Delta	10	29.3%
Pearl River	24	28.3%
Scott County	21	28.3%
Hattiesburg	48	28.2%
Smith County	25	28.2%
Jackson County	45	27.4%
Quitman County	14	27.0%
Noxubee County	15	26.7%
Lee County	56	26.5%
Senatobia	12	26.0%
South Panola	27	25.8%
New Albany	16	25.2%
Lawrence County	12	25.2%
Jones County	39	24.9%
Stone County	21	23.7%
Louisville	20	23.3%
Meridian	27	22.8%
Moss Point	23	21.8%
McComb	19	21.4%
Biloxi	29	20.9%
Oktibbeha County	10	20.8%
West Point	15	20.1%
Columbus	35	19.4%
Alcorn	26	19.3%
Holmes County	16	18.8%
Marion County	22	18.7%
Jackson Public	211	18.6%
Leake County	11	18.4%
MS School for the Deaf	17	17.8%
Kosciusko	16	17.4%

# 4-Year Graduation Rates

Division of Research and Development

J.P. Beaudoin, Ed.D., Chief

April 2016

District Name	N-Count*	4-Year Graduation Rate for Students with Disabilities
Quitman	11	17.3%
Harrison County	74	16.6%
Tishomingo County	18	16.3%
Yazoo County	12	16.0%
Hinds County	51	15.4%
Simpson County	29	13.6%
Tate County	15	13.4%
Jefferson Davis	18	12.6%
Vicksburg-Warren	64	11.4%
Houston Separate	11	9.3%
North Panola	11	9.1%
Natchez-Adams	27	7.5%
Greenwood	13	7.5%
Yazoo City	13	7.5%
East Jasper	14	7.1%
Sunflower County	14	6.2%
Greenville	53	5.3%
Grenada	24	5.0%
Wayne County	24	5.0%
Covington County	29	5.0%
Marshall County	19	5.0%
Walthall County	15	5.0%
Canton	31	5.0%
Cleveland	17	5.0%
Perry County	**	**
Nettleton	**	**
Amory	**	**
Tunica County	**	**
Benton County	**	**
Wilkinson County	**	**
Union County	**	**
Claiborne County	**	**
Newton City	**	**
Leland	**	**

# 4-Year Graduation Rates

Division of Research and Development

J.P. Beaudoin, Ed.D., Chief

April 2016

District Name	N-Count*	4-Year Graduation Rate for Students with Disabilities
Jefferson County	**	**
Poplarville	**	**
Pass Christian	**	**
Carroll County	**	**
Coahoma County	**	**
Kemper County	**	**
Humphreys County	**	**
West Bolivar	**	**
Winona	**	**
Forrest County	**	**
North Pike	**	**
Attala County	**	**
Greene County	**	**
Indianola	**	**
West Jasper	**	**
Choctaw County	**	**
Clarksdale	**	**
Copiah County	**	**
Lumberton	**	**
North Tippah	**	**
Hazlehurst City	**	**
Okolona Separate	**	**
Philadelphia	**	**
Columbia	**	**
Durant	**	**
Enterprise	**	**
Neshoba County	**	**
Union City	**	**
Coffeeville	**	**
Booneville	**	**
Forest City	**	**
East Tallahatchie	**	**
North Bolivar	**	**
Chickasaw County	**	**



# 4-Year Graduation Rates

Division of Research and Development  
J.P. Beaudoin, Ed.D., Chief

April 2016

District Name	N-Count*	4-Year Graduation Rate for Students with Disabilities
Pontotoc City	**	**
Holly Springs	**	**
Mound Bayou	**	**
West Tallahatchie	**	**
Amite County	**	**
Water Valley	**	**
Hollandale	**	**
Montgomery County	**	**
Richton	**	**
Shaw	**	**
Baldwyn	**	**
South Pike	**	**
Benoit	**	**
Coahoma AHS	**	**
Hinds AHS	**	**
Roger Amos McMurtry	**	**
Oakley Youth Development Center	**	**
Stovall SPED Complex	**	**
MS School for the Blind	**	**
Hudspeth Center	**	**
Magnolia Grove	**	**
Ellisville State School	**	**
MS State Hospital	**	**
MS School for Math and Science	**	**
MS School for the Arts	**	**
Drew	**	**
<b>State of Mississippi</b>	<b>2960</b>	<b>27.5%</b>

\*N-Counts are rounded to the nearest whole number

\*\*Indicates the district did not meet the minimum n-count for the calculation of the graduation rate.  
Rates below 5% are reported as 5%.