

OFFICE OF CHIEF ACADEMIC OFFICER
Summary of State Board of Education Agenda Items
June 18-19, 2015

OFFICE OF ELEMENTARY EDUCATION AND READING

11. Approval of public reporting format, as required by the *Literacy-Based Promotion Act of 2013* [Goal 1 – MDE Strategic Plan]

The Office of Elementary Education requests approval of the report format for school districts to meet the public reporting requirements of the *Literacy-Based Promotion Act*. The report format was developed with input from the Office of Elementary Education and Reading, the Office of Student Assessment, the Office of Technology and Strategic Services, and members of local school boards.

In accordance with Mississippi Code § 37-177-17, districts are required to report the following information within 30 days of final approval of state accountability results:

- number and percentage of students in 3rd grade scoring at each performance level on the state assessment in reading and math;
- number and percentage of students in 3rd grade taking the alternative assessment;
- number and percentage of students being retained at each grade level Kindergarten through 8th grade;
- number and percentage of students in 3rd grade passing for good-cause exemptions; and
- any revised district policies for promotion and retention.

This item references Goal 1 of the *Mississippi Board of Education 2016-2020 Strategic Plan*.

Recommendation: Approval

Back-up material attached



Literacy-Based Promotion Act Annual Report of Performance and Student Retention

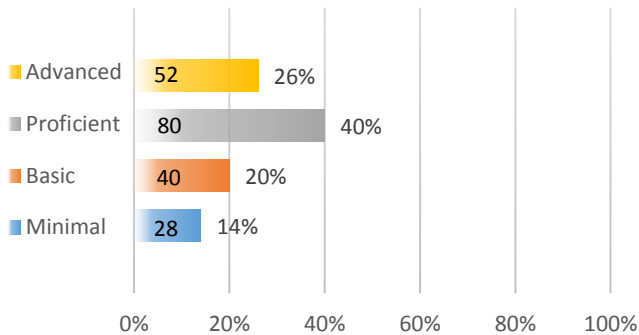
The Literacy-Based Promotion Act (LBPA) was enacted to improve the reading skills of Kindergarten and First through Third Grade students enrolled in the public schools so that every student completing the 3rd grade is able to read at or above grade level. This report displays the components required under the guidelines of the LBPA, **which include the number and percentage of students:** scoring at each performance level on the state assessment in reading and math, taking the alternative assessment, being retained at each grade level Kindergarten through 8th grade, passing for good-cause exemptions; and any revised district policies for promotion and retention.

NOTE: Any student counts ≤ 10 (or percentages $\leq 5\%$ or $\geq 95\%$) represent suppressed data to prevent the identification of individuals in small cells or with unique characteristics.

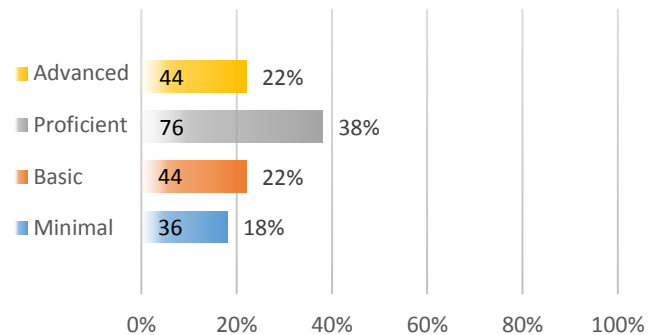
District: ABC School District

School Year: 2014-2015

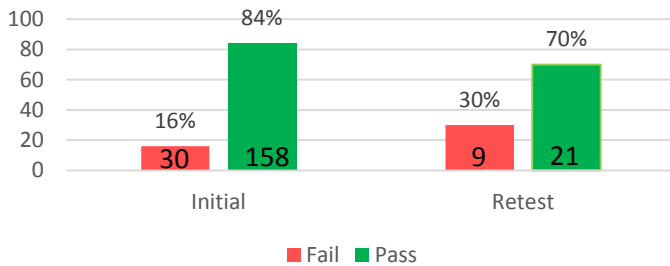
State Assessment - 3rd Grade Reading



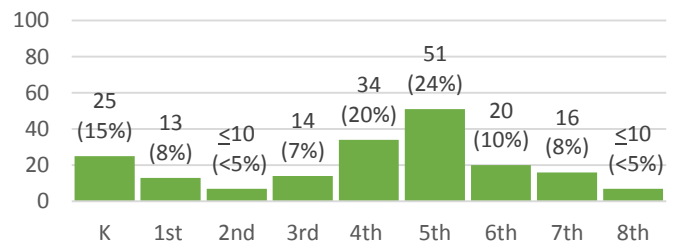
State Assessment-3rd Grade Math



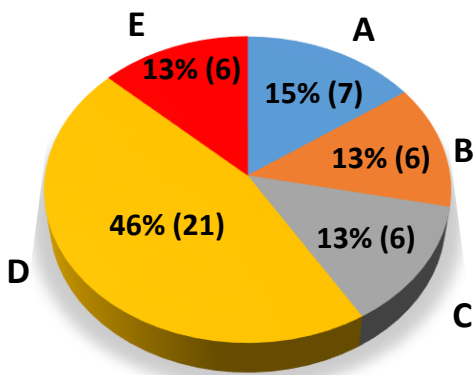
3rd Grade Reading Summative Assessment



Students Retained K-8th



Students Promoted by Good Cause Exemption



Total: 46

- A. Limited-English Proficiency with less than 2 Years in English Learner Program
- B. Students with disabilities for whom participation in statewide accountability system is not appropriate (SCD)
- C. Students with disabilities receiving two years intensive remediation and previously retained
- D. Students tested on an alternative assessment (for 2014-15 this is an alternate form of the 3rd Grade Summative Assessment)
- E. Students receiving two years intensive remediation and previously retained for two years

Local School Board Promotion / Retention Policy:

Policy Revision Date:



Literacy-Based Promotion Act Annual Report of Performance and Student Retention

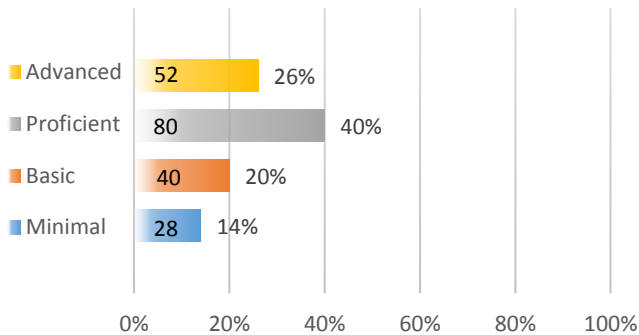
The Literacy-Based Promotion Act (LBPA) was enacted to improve the reading skills of Kindergarten and First through Third Grade students enrolled in the public schools so that every student completing the 3rd grade is able to read at or above grade level. This report displays the components required under the guidelines of the LBPA, **which include the number and percentage of students:** scoring at each performance level on the state assessment in reading and math, taking the alternative assessment, being retained at each grade level Kindergarten through 8th grade, passing for good-cause exemptions; and any revised district policies for promotion and retention.

NOTE: Any student counts ≤ 10 (or percentages $\leq 5\%$ or $\geq 95\%$) represent suppressed data to prevent the identification of individuals in small cells or with unique characteristics.

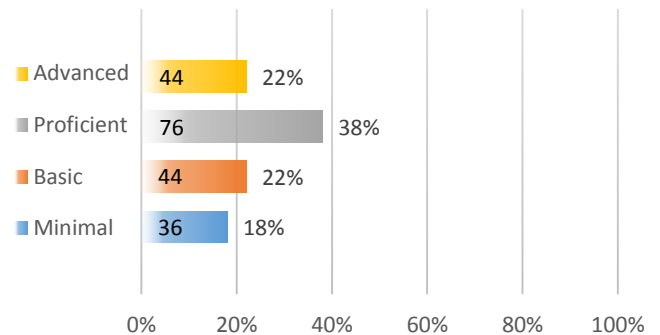
District: ABC School District

School Year: 2014-2015

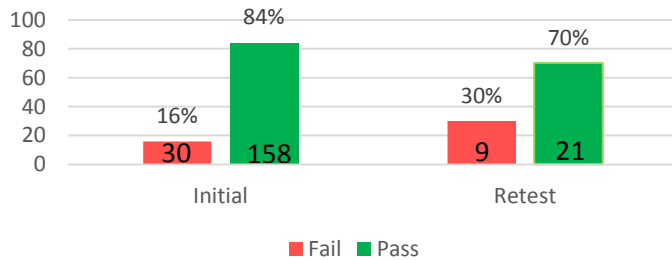
State Assessment - 3rd Grade Reading



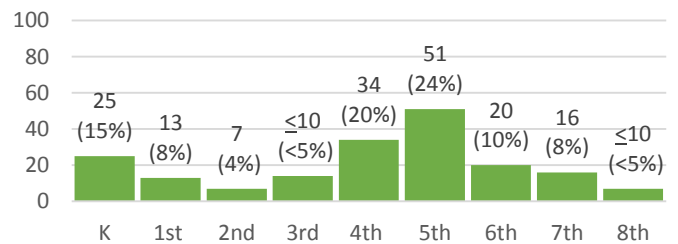
State Assessment-3rd Grade Math



3rd Grade Reading Summative Assessment



Students Retained K-8th



Students Promoted by Good Cause Exemption

No students were promoted for Good Cause Exemption.

- A. Limited-English Proficiency with less than 2 Years in English Learner Program
- B. Students with disabilities for whom participation in statewide accountability system is not appropriate (SCD)
- C. Students with disabilities receiving two years intensive remediation and previously retained
- D. Students tested on an alternative assessment (for 2014-15 this is an alternate form of the 3rd Grade Summative Assessment)
- E. Students receiving two years intensive remediation and previously retained for two years

Local School Board Promotion / Retention Policy:

Policy Revision Date: