

OFFICE OF QUALITY PROFESSIONALS & SPECIAL SCHOOLS
Summary of State Board of Education Agenda Items
August 15-16, 2013

MISSISSIPPI SCHOOL OF THE ARTS

G. Approval of the Mississippi School of the Arts Technology Plan for 2013-2016

Executive Summary

The document contains the technology plan for all 2013-16. From the previous publication, the following changes have been made:

- Technology Committee – added following individuals: student, parent, community/business leader
- Accessible Use Policy (AUP) – added a paragraph addressing our compliance with CIPA policy:
“The Mississippi School of the Arts is in compliance with the Children’s Internet Protection Act (CIPA) and will comply with any additional state and federal regulations that pertain to technology use within the district and through use of the MSANET network infrastructure and servers that is forthcoming from the local, state and federal regulatory agencies.”
- Accessible Use Policy (AUP) – added a paragraph addressing our policy on Cyberbullying:
“In compliance with CIPA 2008 updates, all students at the Mississippi School of the Arts will be educated about appropriate online behavior, including interacting with other individuals on social networking websites, in chat rooms and in cyberbullying awareness and response. When using the Internet, all students will be closely monitored to prevent students from accidentally or otherwise accessing inappropriate material.”
- Added Accessible Use Policy (AUP) – added signature pages for the following individuals: student, parent/guardian, employee
- The budget was updated slightly to reflect current budget availability and plans for equipment purchases.
- Minor adjustments were made for readability and accuracy.

Recommendation: Approval

Back-up material attached

DISTRICT TECHNOLOGY PLAN COVER PAGE

District	Mississippi School of the Arts
Superintendent	Suzanne Hirsch
Technology Coordinator	Kelly Perkins
Mailing Address	P O Box 229, Brookhaven, MS 39602
Phone	601-823-1300
Fax	601-823-1555
Technology Coordinator's Email	kstelzriede@mde.k12.ms.us
District Home Page (URL)	www.msa.k12.ms.us

I. Technology Plan Submission Contact Information

Please have the person responsible for the submission of your district's technology plan to complete the following information. It is imperative that your district's plan be submitted before the deadline of **October 1, 2009**, and that it reflects accurate information.

Name of School District Personnel Responsible for Plan Submission	Suzanne Hirsch
Address	P O Box 229
City, State, Zip	Brookhaven, MS 39601
Telephone Number	601-823-1300
Fax Number	601-823-1555
Email Address	shirsch@mde.k12.ms.us

Mississippi School of the Arts

Three-Year Technology Plan 2013-2014, 14-15, 15-16



Revised March, 2016
Original Plan Submitted Feb. 6, 2007

Revision History:

November 17, 2003
January 30, 2004
April 26, 2004
May 25, 2004
June, 2005
Jan, 2007
September, 2009
March, 2013

3-Year Technology Plan
Mississippi School of the Arts
2013 – 2014, 14-15, 15-16

TABLE OF CONTENTS	
Executive Summary	4
District Profile	5
District Demographics and General Information	6
District Vision, Mission, and Philosophy Statements	9
Technology Committee	10
❖ Selection Process for Committee Members	11
Acceptable Use Policy	12
Assessment of Technology	13
❖ Teaching and Learning	15
❖ Educator Proficiency	16
❖ Environment and Infrastructure	17
❖ Wide Area Network Schematic Chart	20
❖ Leadership and Support	21
Technology Plan Implementation	23
Goals, Strategies, and Timelines	24
❖ Teaching and Learning	24
❖ Educator Proficiency	26
❖ Environment and Infrastructure	28
❖ Leadership and Support	29
Technology Budget	31
Technology Plan Evaluation	32
Statement of Assurances	35
Universal Services Criteria Checklist	36

EXECUTIVE SUMMARY

The Mississippi School of the Arts has developed a plan for utilization of educational technology to improve student achievement through enhanced curriculum content, improved instructional delivery, ease of access to and support for educational technology integration.

The ***Mississippi School of the Arts Three-Year Technology Plan***, which is included in these documents, contains information on technology needs of the district, strategic and measurable actions for technology integration into the school environment, and guidelines for local technology planning processes. The plan is divided into four major sections. Each section is highlighted in the summary below.

General Background Information

The first section of the plan covers the district profile, demographics and general information. It included the District's Vision and Mission Statements. Here you can also find the selection process for our District Technology Committee and a listing of the current members of that committee.

Acceptable Use Policy

The second major section of this document is a copy of our ***District's School Acceptable Usage Policy***. This policy is a contractual agreement required by all users of the District technology related resources. It covers in detail the how and why of all users responsibilities in regard to legal, ethical, and appropriate use of these resources.

Assessment of Technology

This section of the plan is a current assessment of how the district/school currently utilizes technology to achieve its goals.

Technology Plan and Implementation Strategies

This final section of the plan document covers our current 3-year plan for improving the use of technology within the District. Included is an analysis of how the teaching and learning, educator proficiency, environment and infrastructure, and leadership and support elements of our Educational environment are impacted by the goals, strategies, timelines, and budget elements of the plan.

Also included in this section are the planned methods and elements to be evaluated to determine our effectiveness in accomplishing the stated goals.

Summary Notes to Submitted Plan Documents:

MSA is not an eligible entity for the E2T2 program, and all normally included elements relating to that program are not addressed (specifically budgetary implications and the 25% rule for professional development).

The MSA Acceptable Usage Agreement is included as published at the school. It includes references to DormNet, that are not applicable to this submission. For clarification, DormNet is an entirely separate network in the residence hall of the campus that is not connected to nor funded by any E-Rate eligible items. By school policy, the same rules for usage apply to that private network as to the school's main network, hence the references to it in the policy.

DISTRICT PROFILE
February 1, 2013

District Name: Mississippi School of the Arts	
Accreditation Level	Pending
Number of Schools in District	1
Number of Students Enrolled	132
Percentage of Students Eligible for Free/Reduced Lunch	38%
Number of Students Eligible for English as a Second Language (ESL) Services	0
Number of Drop Outs	0
Graduation Rate	100%
District E-Rate Discount	60 %
Subject Area(s) and Grade Level(s) of Greatest Academic Need According to the Latest District Assessment	N/A

DISTRICT DEMOGRAPHICS AND GENERAL INFORMATION

The Mississippi School of the Arts is a residential school for visual and performing arts students that opened in August 2003. MSA is located on the historic Whitworth College Campus in Brookhaven, its historic buildings are designated as Mississippi Landmarks, and the campus is on the National Register of Historic Places. It is the fourth special state residential school to be established by the Mississippi Department of Education, governed by the State Board of Education. The three prior existing state schools are the Mississippi School for the Deaf, Mississippi School for the Blind, and Mississippi School for Math and Science. MSA is a residential high school offering a two-year program for eleventh and twelfth grade students. Mid-program enrollments are not allowed.

As a State Department sponsored school, the School of the Arts is considered both a School District (# 4306) and a School (# 004).

ENROLLMENT

The Mississippi School of the Arts began its first year of operation in August of the 2003–2004 school year with a total enrollment of 68 students. Authorizing legislation stipulated that juniors only would be enrolled during the first year. The enrollment for 2004-2005 was 116. Projected maximum enrollment for the foreseeable future is 170 until capital expenditures can be made to increase the size of the campus.

TEACHING AND LEARNING

The Mississippi School of the Arts is a residential school that provides advanced programs of study in music, theatre, visual arts, literary arts, theatrical movement, and media arts for artistically gifted eleventh and twelfth grade students from throughout Mississippi. Curriculum at MSA will focus on the arts and humanities. Comprehensive residential and academic curricula will prepare high school students for further study or the pursuit of employment.

At the present time, these are the only arts disciplines are offered: theatre, visual arts, vocal music, literary arts, and dance. In addition, students take English, some math and science, and social studies courses on the MSA campus, while traveling to our partner school Brookhaven High School, with whom we contract for additional Math, Science, and Foreign Language courses. Long-range plans include offering all content areas on the MSA campus. In addition to completing a focus in one of the arts disciplines, MSA must fulfill all state graduation requirements as well as pass Subject Area Tests.

The Mississippi School of the Arts purchased a student information and instructional management system in June of 2005 that facilitates curriculum development, assessment, and alignment with the competencies required in the curriculum frameworks approved by the Mississippi Department of Education. The administration and faculty are building a curriculum designed to achieve artistic excellence that reflects and responds to individual student needs and abilities. Students are challenged to acquire skills and attitudes that will enable them to think critically and creatively with knowledge to function as citizens in an ever-changing society. Participation in advanced courses combined with multiple elective choices enhances opportunities for optimum student achievement. Performances, exhibitions, and other activities play an important role in the education of the total individual. Diversified student organizations allow students to develop skills in the arts, other academics areas, and service oriented activities. Students are encouraged to excel individually as well as through team efforts. Technology is given high-priority in the school, with emphasis being placed on providing state-of-the-art technology solutions for faculty, students, staff, and parents.

The Mississippi School of the Arts is responsive to the needs of all students and provides programs tailored to specific learning styles to promote student achievement. Artistically gifted and talented students who apply from school districts throughout the state select an arts focus within their curriculum, but have many opportunities for coursework in other academic areas. Students perform campus and community service work in appreciation for unique learning opportunities provided by the state.

LEADERSHIP AND SUPPORT

Comprehensive professional development is implemented annually to provide current information and training in regard to new educational methodologies and innovative teaching strategies in the visual and performing arts and other content areas. Dedication and commitment to student achievement are reflected in the Subject Area Test Program scores and the outstanding awards earned through performances and exhibitions of arts students who have successfully competed at state and regional competitions and qualify for nationals. Currently there are 25 total full-time employees (administration, faculty, and support staff) and 28 contractual workers. 100% of the teachers (11) are certified and highly qualified.

COMMUNITY SUPPORT

The Mississippi School of the Arts is located on the historic Whitworth College campus in Brookhaven, Mississippi. During the spring of 2000, the city of Brookhaven conditionally transferred the Whitworth College Campus, which is on the National Historic Register, to the state of Mississippi. In addition, the city donated \$3,000,000 in bond proceeds to the Mississippi School of the Arts and received a \$1,500,000 HUD grant for use in campus improvements.

Through a partnership with the Brookhaven School District, students take some courses at Brookhaven High School located approximately one-half mile from MSA.

Continuous family involvement is an essential element to students successfully adjusting to life away from home. The MSA environment provides security, support, materials, and structure to help students continue on the academic path to graduation. Ongoing interactive support, communication, and commitment from MSA and parents/guardians are imperative.

Opportunities for parent involvement in student life are multifaceted. Informational and orientation meetings, telephone and campus conferences, varied forms of communication, and options for monitoring student progress via the Internet are just a few of the programs in place to encourage continuous communication.

The MSA community has worked to create an environment for nurturing the whole child through the following networks that will enhance the curriculum, student activities, and overall learning environment:

- Host Family Network—is an optional program that pairs residential MSA students with local families to help students and their families feel welcome and part of the Brookhaven community. Most students participate in this program.
- Parent Network—connects parents to MSA and builds a statewide support system to advise and promote student programs and activities.

As work progresses on the restoration and renovation of two nonfunctional historic buildings and an additional tower to the Student Life Center, the Mississippi School of the Arts Foundation—a 501(c)(3) organization—is seeking public and private funding to help supplement legislative appropriations. Future plans include raising monies for the construction of an instrumental building, guest artist housing, and additional classrooms on the MSA campus.

DISTRICT VISION, MISSION, and PHILOSOPHY STATEMENTS

Vision Statement

At the Mississippi School of the Arts, we envision a challenging, dynamic, supportive community of diverse learners where artists imagine, create, and realize a better world in which to live and work.

Mission Statement

The mission of the Mississippi School of the Arts is to provide a challenging arts education for artistically gifted and talented Mississippi students in a residential learning environment that promotes honor, integrity, service, and life-long learning.

Philosophy Statement

The Mississippi School of the Arts recognizes the unique needs for the state of Mississippi in providing a challenging educational experience for artistically talented and gifted students in order for them to develop to their full potential in the areas of creative writing, dance, the humanities, literature, music, media arts, theatre, and the visual arts. The academic and residential life programs at MSA are designed to challenge each student based on individual needs, talents, capabilities, backgrounds, and interests while meeting requirements necessary for high school graduation, college admission, and employment in a global work place. Upon completion of campus facilities, the academic curriculum at MSA will provide students with arts and non-arts courses in seven major programs of study: dance, music (vocal and instrumental), theatre, visual arts, media arts, and literary arts. Until additional capital improvement funds are available, MSA will limit major programs to dance, literary arts, theatre, visual arts, and vocal music. Non-arts curriculum includes courses such as English language arts, social studies, math, science, and foreign language. Opportunities at MSA will enable students to delve into all aspects of the curriculum in order to combine their creative abilities with other essential tools needed to succeed in the world of the future. The faculty at MSA is distinguished by a depth and diversity of experiences and qualifications brought to specific areas of the academic program. MSA teachers must have a minimum of five years experience and/or a higher collegiate degree with teaching experience; all campus faculty members meet the qualifications for Highly Qualified Teachers. Guiding students to their personal best through challenges and risk-taking in a supportive learning environment will be a primary goal of the school faculty and administration.

DISTRICT TECHNOLOGY COMMITTEE

District Technology Committee 4/1/2013		
Member	Title	Contact Information
Suzanne Hirsch	Executive Director, Mississippi School of the Arts	P O Box 229 Brookhaven, MS 39602 601-823-1300
Homer Richardson	Community Representative	1545 Friendship Ln, NW Brookhaven, MS 39602 601-833-4126 hrichardson@tislink.com
Kelly Perkins*	Technology Coordinator, MSA	P O Box 229 Brookhaven, MS 39602 601-823-1354
Louann Piper Smith	Librarian, Mississippi School of the Arts	P O Box 229 Brookhaven, MS 39602 601-823-1354
Dr. Robert Brooks	Director of the Theatre Department, Mississippi School of the Arts	P O Box 229 Brookhaven, MS 39602 601-823-1354

*Committee chairperson

SELECTION PROCESS FOR COMMITTEE MEMBERS

Members of the technology committee were selected to provide a diverse group of individuals with varying areas of expertise and work experiences. Administrators, teachers, support staff, and State Department personnel were polled along with other individuals having expertise in specific areas to provide a broad knowledge base necessary in developing a technology plan suitable for implementing our vision and mission.

The planning committee is composed of persons who possess the ability to:

- Demonstrate professional rapport and enthusiasm as it relates to technology with other staff members in their respective areas
- Identify strategies/activities/methods that will directly impact student achievement
- Wisely and creatively manage expenditures and search for new avenues of funding for technology
- Provide input throughout the project and mesh ideas in decision making processes
- Identify, determine and evaluate strengths and weaknesses in programs
- Communicate positive ideas and promote technology, not only within the district, but within the community and state
- Heighten an awareness of technology needs, goals, and projects to staff members in the district and the general public, and
- Summarize and prioritize ideas and plans.

The planning committee's function is to meet with staff members within the various disciplines of the school, disseminate and prioritize information, contribute to the composing and writing of the technology plan, and compiling and prioritizing needs assessments from all segments of the school community. Meetings will be held periodically throughout the year to assess the degree to which goals are being completed, and make changes as necessary.

Committee members possessing specific areas of expertise were included to provide guidance and assistance on the following:

- Maintaining a logical and precise budget
- Developing technology related projects and community partnerships
- Exploring non-state funding resources that may be channeled toward technology
- Identifying programs and strategies that will enhance the revision of the current curriculum on an ongoing basis
- Making programmatic level decisions regarding technology
- Making decisions that directly impact student achievement in residential and academic life.

DISTRICT ACCEPTABLE USE POLICY

The Mississippi School of the Arts Acceptable Use Policy is reviewed and revised on a yearly basis as part of our ongoing administration of our technology plan.

The latest revision was published March 2, 2012 as part of our annual student handbook review. It comprises pages 74 through 86 of that handbook.

A copy of the policy is attached to this document. For electronic submission, the file name is "MSA Technology Acceptable Use Policy with Contracts 0913.pdf"

ASSESSMENT OF EXISTING TECHNOLOGY

Assessment of Resources: The following information provides a snapshot of current technology hardware and peripherals, and the degree of technology integration in the classroom and will provide invaluable information in implementing not only this initial three year plan, but will provide a guideline in developing the annual technology update.

TECHNOLOGY ASSESSMENT CHART – September 2013	
Percentage of schools that are currently wired and networked	100%
Percentage of current classrooms that are currently wired	100%
Percentage of schools that currently have Internet access	100%
Percentage of classrooms with Internet capable computers that are connected	100%
Percentage of teachers who have participated in technology related professional development	100%
Number of computers in classrooms that are Internet capable and connected	80
Number of computers in other instructional areas that are Internet capable and connected (Computer Labs & Graphics Labs)	26
Number of computers in media centers that are Internet capable and connected	12
Percentage of media centers that are in the process of, or have completed the automation process	100%
Percentage of teachers who have a multi-media computer in the classroom	100%
Number of: Computer Workstations	44
Servers	9
Portable Computers	60
Network Printers	9
Individual Printers	5
Scanners	20
Digital Cameras	34
Video Camcorders	13

3-Year Technology Plan
Mississippi School of the Arts
2013 – 2014, 14-15, 15-16

LCD Projectors	13
PBX Telephone Ports (Campus Phones)	350
PBX Shared Voice Mail Ports	8
FAX Machines	3
Photocopiers	4

We continue to use about 25 systems and printers that were provided new at the startup of the school in the 2003-04 school year. While they were considered state of the art back then, they now only provide some of our classrooms with additional internet support and provide backup hardware support.

Funding was made available in April of 2011 that allowed us to purchase 2 new servers, 33 new HP laptops, 48 IBM desktop systems, additional and updated software, new cameras, monitors, and a complete multi media lab. We were also able to purchase an online plagiarism and grading system (Turnitin.com) that will better prepare our students for college and provides instructors with an efficient means of evaluating whether or not material has been plagiarized for writing projects.

In 2013, we implemented STAR Reading web based program that is designed to allow us instructors to evaluate student reading levels as they come in as Juniors.

In 2010, Mississippi installed and configured a learning lab in the library that is primarily used as an On-Line Classroom lab and has expanded the breadth of academic classes available to our students.

In 2011, we installed 7 Promethean Smart Boards in our classrooms to facilitate faculty instruction.

TEACHING AND LEARNING

In the fall of 2013, all classroom teachers will complete a survey to make suggestions about the implementation and application of technology in the school by identifying strengths, weaknesses, and areas for improvement. MSA classroom teachers will complete a survey addressing the following topics:

1. The perceived impact of technology on student learning in the classroom,
2. The types of technologies that teachers use with their students, and
3. The extent to which teachers use technology.

Included in the survey will be a curriculum questionnaire to allow teachers to discuss current trends and identify strengths, weaknesses, and specific materials needed to enable them to teach more effectively. The questionnaire will identify various ways technology is integrated in the classroom, and offer opportunities to express concerns or make suggestions relative to curriculum. Listed below are areas to be investigated through the curriculum survey:

1. Strengths in the overall curriculum structure,
2. Areas of Improvement needed in the overall curriculum structure,
3. Materials needed to help teach more effectively,
4. Methods for technology integration in the classroom,
5. Students use of technology for purposes beyond practice of skills,
6. Concerns and suggestions relative to curriculum, and
7. Ways in which the curriculum leaders can help teachers.

Teacher responses will provide essential information when revising the curriculum, planning professional development sessions, and developing technology budgets for the purchase of technology equipment and peripherals.

ECUCATOR PROFICIENCY

Professional Development Activities: A goal of the Mississippi School of the Arts is to produce a technologically literate administration, faculty, and support staff capable of infusing technology into all aspects of campus life while maximizing the impact on student learning. To assist in reaching this goal, staff members are required to attend professional development sessions throughout the year such as MSA site-specific training and Mississippi Department of Education-sponsored workshops (MSIS Training). In addition, staff members are encouraged to take advantage of such opportunities as Technology Academy for School Leaders (TASL), annual state conferences such as the Mississippi Educator's Computing Association Conference (MECA) and various trade shows. In an arts school environment where technology plays key roles as media for creative expression, teachers are encouraged to improve their skills in relation to technological equipment and various applications relative to sight, sound, and movement. It is critical that instructional leaders develop professional skills necessary to successfully integrate technology into the classroom, enable students to create digital portfolios, and to market their skills in performance and production.

A comprehensive professional development plan is being developed with input from the Department of Education to address the needs of teachers, administrators, and support staff in a new school where the goal is to be a model of state school with fully integrated technological services.

MSA staff members are involved in diverse professional development training experiences. Participants have already received in-depth group instruction on our new Sam7 student information system conducted at the vendor's facility in Jackson, MS. The school registrar will provide individual, one-on-one support to teachers and staff members in methods for tailoring the program by content area to meet the requirements of grading, reporting, attendance, and communication with students and parents.

ENVIRONMENT AND INFRASTRUCTURE

Telecommunications Services and LAN / WAN Network Description and Narrative

The Mississippi School of the Arts is a state department school that serves as both a district office and a school office. All offices for both functions are housed on the same campus facility located in Brookhaven, MS. Since we have no Wide Area Network requirements within the “district” from school to school, more effort will be given to detail our Local Area Network.

Telecommunications Services: Telephone services are an essential portion of our technology build out. Telephone services are received via a multiplexed T1 connection from a telecom vendor, then distributed via a digital PBX system. All classrooms, offices, and student dorm rooms are equipped with telephone access.

Wide Area Network components: The WAN portion of our school/district connectivity consists of a single DS3 connection from our campus in Brookhaven to the State Department’s K12 Jackson region switch. The termination on our end is accomplished via a Cisco 3745 Router.

The current configuration should meet the school and departments needs for the next three years. In the event that our bandwidth requirements should exceed capacity, there is room for expansion in our current equipment chassis.

Local Area Network components: The LAN portion of our school/district connectivity consists of a switched Ethernet topology. It is composed of a Cisco 6509 Core layer 3 Switch connected by gigabit Ethernet over fiber optic cabling to each wiring closet. The individual wiring closets have an assortment of Cisco 2950 switches providing 100mb network access points throughout the facility.

The local area network (LAN) is in place in each of the buildings that are currently functional. Infrastructure exists for connecting the remaining three buildings as they are restored and brought into use.

100% of the classrooms, offices, library, and common are networked. The library and the cafeteria/commons are configured to enable technology training/use for large groups with wired or wireless connection capabilities. All classrooms, cafeteria, library and common areas are wired for system access and three wireless switches provide wireless LAN support to two separate buildings.

As additional buildings are completed in the next three years, additional switches will be installed to provide systems access to those new areas.

Usage Analysis of existing network:

The schools network is used to provide a wide variety of functionality and interaction of systems. We have a mixed mode environment that utilizes and supports both the Microsoft Windows platform (XP pro, Windows 7, Server 2008 and Server 2003) and the Apple Macintosh platform (OS X). The basic organizational units are described briefly below.

Administrative Services: The administrative aspects of our network are currently provided by a variety of services. Local Windows 2003 and 2008 file servers provide file storage and backups. The administrators and support staff access the schools new Sam7 Student Information software package as a web based service via our Internet connection. This system manages student academic, demographic, and residential information. It is used to record and report student attendance, grades, discipline, student scheduling, and student demographics.

The Parent Online module of the Sam7 software system (ActiveParent), allows the individual students or their parents to check student assignments, attendance, grades, and teacher comments online from either within the school environment or from a public Internet connection. Features are also available to allow direct communications between the teacher and the student or parent via automated email links. Sam7 also provides instant messaging services which afford the school administrators to communicate with staff and students through a mass-communication system.

File and print servers located at the school also provide the capability for data to be shared, stored, and accessed by users located in individualized classrooms or centralized labs, as well as the sharing of printing resources.

Internet Access: All nodes on the network have access to the Internet as needed by direct broadband 100 mb connections. All staff members and students are provided electronic mail accounts, with training being provided by the technology coordinator.

Library Resources: The school's library is automated using the Concourse automation software system. It is located on a centralized server allowing students, faculty, and staff web based online access to search the library holdings from any campus computer. Access is currently available from the Internet, but it has not been actively promoted

The library checkout counter is equipped with a barcode scanner to scan student ID cards and the individual items being checked out. This greatly increases the accuracy of each transaction and speeds up the process considerably.

Through the Internet, both students and faculty have access to Magnolia, an online database available to publicly funded libraries across the state.

Food Services: The school food service operation has purchased an automated system that is in the process of being deployed. It consists of a Nutrikids POS (Point of Sale) software package housed on a centralized server and two client touch screen computers located on the cafeteria serving lines. This system is designed to be

compatible with our student ID bar-coding system to aid in accurately tracking all mealtime activities.

The food service director also uses the Nutrikids Nutritional Analysis software program installed on her workstation. This helps automate the planning and reporting mandated by our participation in the federal school lunch program.

Effectiveness of the Current Infrastructure: The existing PRI Telephone system provides effective telephone services to conduct routine business. Upgrades and expansion will be needed when the facility is expanded to include more buildings.

The WAN provides transmission of student data information, required financial transaction information, and departmental and inter-agency communications between the school and the state office in Jackson as well as access to Internet and outside digital services.

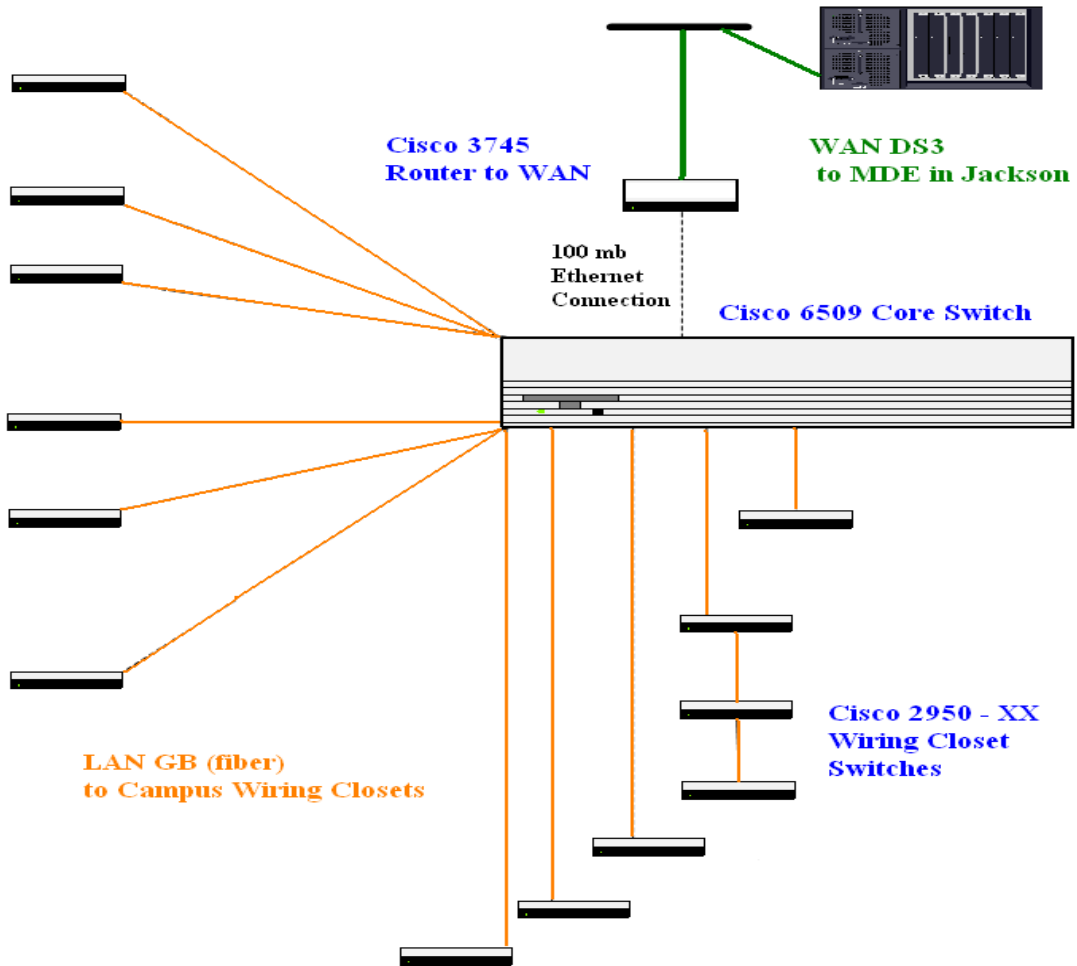
The current LAN is very effective in providing connectivity throughout the school campus and will be ever changing to keep up with technology trends.

One (1) technician provides onsite support for repair and maintenance of all available technologies throughout the school. The school's goal is to hire a director level supervisor to beef up the Technology Office when funds become available.

Improvements Initiated Through the E-Rate Program: E-rate reimbursements received typically provide funding for only internet access and basic telecommunications.

Our discount rate has never been great enough to provide funding for any additional projects, nor is it ever anticipated to do so.

LOCAL AND WIDE AREA NETWORK DIAGRAM



All network drops are 100 mb ethernet. All Wiring Closet feeds are GB fiber.
Connectivity to WAN Router from Core Switch is 100 mb. WAN circuit is DS3

LEADERSHIP AND SUPPORT

Availability of Technology: Hardware and peripheral purchases are based on teachers' requests, programs most in need, the skills the individual user possesses, and amount of funding available to specific projects.

Access to Computer Workstations

(100% of the workstations have broadband Internet Access available)

Computer Access	User has access to computer for individual use in classroom or office.	User has access in teacher work areas, shared offices, libraries, or computer labs.
Administrators	100% Primary	100% Secondary
Teachers	100% Primary	100% Secondary
Residence Life Staff	100% Primary	100% Secondary
Support Staff Supervisors	100% Primary	100% Secondary
Support Staff Workers		100% Primary
Students		100% Primary
Resident Assistants	100% Primary	100% Secondary

Assistive Technology Devices: Assistive technology is defined as any device or piece of equipment that is used to increase, maintain, or improve functional capabilities of a child with a disability. Assistive Technology Evaluations determine which devices best match the person's needs and preferences and these devices are provided to students to assist them in utilizing technology to the fullest degree possible in the classroom setting.

As of our enrollment to date through year ten of operation, no students possessed any disabilities that required assistive technology devices.

The following is a compiled list of devices available in the district, but not yet needed.

- Tape Recorders
- CD/DVD/VCR players and Televisions

The Mississippi School of the Arts is committed to providing assistive technology devices which best match the individual's needs and preferences as a strategy to better accommodate the needs of students with disabilities.

TECHNOLOGY PLAN IMPLEMENTATION

Based on the information gleaned from research, MDE and staff input, projected needs in relation to student achievement, teacher requests, and the degree of implementation of technology throughout the campus, a plan has been developed that addresses ways technology will be integrated throughout the school. Short and long term goals have been developed that when accomplished will:

- Provide means to seamlessly integrate technology into the curriculum,
- Enhance student achievement,
- Create an equitable learning environment through technology,
- Prepare students for twenty first century workforce,
- Provide training for educators to allow their teaching to take advantage of technology and incorporate it completely in their daily practice,
- Continuously update the WAN and LAN to support evolving technologies,
- Connect the school and community to a greater degree, and
- Meet the challenges of providing funding sources to create and maintain technology rich learning environments.

Meetings will be held periodically throughout each school year, with annual updates being submitted to the MDE to fulfill mandated requirements. Yearly surveys, such as a parent survey sent home to determine the degree of technology use in the home, will assist in determining what impact school provided systems will have on connecting the home with the classroom. Curriculum and professional development surveys will be administered to assist in maintaining a database on the progress of technology implementation and training being conducted in the school.

The technology director will meet periodically with administrators to discuss specific technology issues in various departments to enable them to develop strategies and procedures that directly engage their staff and students in technology use, and maximize its potential to the fullest.

Through these means, it is the mission of the Mississippi School of the Arts to provide a comprehensive technology infused environment that enhances student performance, engages and empowers staff and students, and fosters the development of a technology literate workforce.

GOALS, STRATEGIES, AND TIMELINES

Teaching and Learning

GOAL 1: To upgrade the multimedia computers in each classroom and office in the school	
Strategies	Timeline
Acquire, install, and secure the hardware for a campus-wide wireless LAN	June 30, 2016
Upgrade the existing Food Service Line system	June 30, 2013
Upgrade our printing capabilities to include high speed color printing and replace aging printing hardware.	June 30, 2016
<u>Upgrade remaining servers</u>	June 30, 2016
Purchase and install iPad labs in the digital arts labs and in the academic classrooms	
Apply for grants annually to support the technology initiative when possible (MSA does not always qualify due to size and configuration of the school.)	June 30, 2016
GOAL 2: To provide innovative technology for student use in all labs	
Strategies	Timeline
Increase the number of workstations in the library	June 30, 2016
Provide printing capacity to the DORMNet network	June 30, 2016
Provide a server for student use	June 30, 2016
Purchase and install up-to-date software applications for visual and performing arts classes and other disciplines of study	June 30, 2016
Increase number of Macintosh-based computers for use in a design environment.	
Plan, install, and implement a science program utilizing virtual labs where possible	June 30, 2016
Update and/or replace equipment on a three year cycle	June 30, 2016

GOAL 3: To provide diagnostic and prescriptive software programs appropriate for high school students to support subject area testing and other special needs of students coming from diverse districts across the state	
Strategies	Timeline
Research, evaluate, and purchase remedial math program software to support students with below grade level skills	June 30, 2016
GOAL 4: To provide resources for educators that enable them to effectively develop and incorporate curricula aligned with the Mississippi Curriculum Frameworks while designing advanced programs in the visual and performing arts and other disciplines	
Strategies	Timeline
Provide professional development training sessions	June 30, 2016
Incorporate the use of selected systems into the teacher assessment program	June 30, 2016
GOAL 5: To enhance the MSA curriculum and serve as an arts curriculum resource to other districts through the use of distance learning	
Strategies	Timeline
Provide distance learning courses in the arts to assist other districts who have difficulty meeting the graduation requirement in the arts	June 30, 2016

GOALS, STRATEGIES, AND TIMELINES

Educator Proficiency

GOAL 6: To provide innovative, current professional development training for administrators, certified and classified staff to enable educators to successfully integrate technology in the classroom and facilitate campus wide operations	
Strategies	Timeline
Update Computer Graphics Lab on an annual basis to provide the most innovative technology available for staff training and use	June 30, 2016
Increase technology staff to enable additional maintenance, training, and services	June 30, 2016
Train administrators, counselors, and support staff in the use of Sam7 to prepare and modify master class schedules	June 30, 2016
Update technology training modules yearly	June 30, 2016
Attend MDE training sessions and other available training opportunities	June 30, 2016
Train newly hired personnel	June 30, 2016
GOAL 7: To produce a technology literate workforce capable of infusing technology into the classroom	
Strategies	Timeline
Survey teachers annually to tailor professional development needs	June 30, 2016
Provide funding for registration, travel, and substitute pay for employees, when applicable	June 30, 2016
Provide resources and advice to enable staff members to make wise choices when making purchasing decisions	June 30, 2016
Provide funding to purchase hardware and peripherals to assist teachers in using technology	June 30, 2016
Provide necessary materials, supplies and teacher materials to assist in implementing technology into units of study	June 30, 2016

GOAL 8: To provide follow-up training for staff members on an individualized basis to assist in fully integrating technology

Strategies	Timeline
As staff members complete training, conduct follow-up visits in classrooms and offices to assist with implementing new skills learned	June 30, 2016
Conduct on-site supplemental training for new software purchased	June 30, 2016
Schedule faculty meetings to discuss strategies to better integrate technology	June 30, 2016
Schedule additional training modules on specific software for staff when needed	June 30, 2016
Provide on-site assistance for staff after completing training modules in a timely manner to eliminate stress and frustration associated with integrating newly learned technology skills effectively in the classroom	June 30, 2016

GOALS, STRATEGIES, AND TIMELINES

Environment and Infrastructure

GOAL 9: To provide resources for staff and students to enable them to use the Internet to create web pages for individual departments and classrooms, post homework, current events, performance and exhibition schedules and other school related activities	
Strategies	Timeline
Create, update, and maintain the school home page by MSA webmaster	June 30, 2014
Work with Admissions and Recruiting staff to enable on-line registration	June 30, 2016
Develop an student check-in database that will facilitate phone check-in and attendance issues between the school nurse and attendance.	June 30, 2016
Work with MSA Foundation to provide secure, online purchasing for memberships, fundraisers, etc.	June 30, 2016
GOAL 10: To complete the wiring of campus facilities as renovation and restoration is complete	
Strategies	Timeline
In cooperation with MDE, ITS, BBGRPM, purchase materials and equipment necessary to wire facilities and complete the infrastructure for all remaining facilities (e.g Elizabeth Cottage and Cooper Hall)	June 30, 2016
Increase the deployment of wireless access points throughout the campus to enable more flexible use of technology	June 30, 2016
GOAL 11: To integrate individual network applications into a single domain to increase security, use, and management	
Strategies	Timeline
Install Storage Area Network (SAN) to increase online accessibility and redundant backup of real time data	June 30, 2016

GOALS, STRATEGIES, AND TIMELINES

Leadership and Support

GOAL 12: To increase the number of multimedia computers and decrease the number of users sharing units	
Strategies	Timeline
Provide funding for computers, printers, and peripherals	June 30, 2016
Purchase additional workstations for the library	June 30, 2016
Update donated equipment for checking out for students who do not have their own personal computers	June 30, 2016
GOAL 13: To provide parents, students, and the community greater access to school learning resources, classroom assignments and school information	
Strategies	Timeline
Provide training for students and parents in the use of Parent Online	June 30, 2016
Develop web pages for all departments	June 30, 2016
Provide onsite assistance by the webmaster for staff members to ensure success when developing/designing web pages	June 30, 2016
Update necessary software as available to ensure the use of emerging technology	June 30, 2016
GOAL 14: To continue the automation of the library media center and provide online database access for students, faculty, and parents	
Strategies	Timeline
Continuously update technology in media center	June 30, 2016
Continue to build listening and viewing stations in the library for use by individual visual and performing arts students	June 30, 2016
Provide subscriptions to faculty and students to INET Library and Magnolia	June 30, 2016

GOAL 15: To automate food services programs	
Strategies	Timeline
Train users in advanced features of LunchByte POS Cafeteria software	June 30, 2016
GOAL 16: To install an access control system to interface with existing monitoring systems to improve security	
Strategies	Timeline
Work with MDE, ITS, BBGRPM and school security specialists to develop procedures and generate an RFP to require the least amount of hardware	June 30, 2016
Install hardware	June 30, 2016
Train staff in use of the system	June 30, 2016

Technology Budget

**See the attached
Budget Spreadsheet**

entitled

MSA 2011-2013 Technology Budget

Technology Plan Evaluation

CURRICULUM INTEGRATION	TIMELINE	EVALUATION METHODS
	COMPLETION	
GOAL 1: To provide a multimedia computer for each classroom and office in the school	June 30, 2016	Yearly review of goals and assessment of progress by the Technology Advisory Committee.
GOAL 2: To provide innovative technology for student use in all labs	June 30, 2016	Yearly review of goals and assessment of progress by the Technology Advisory Committee.
GOAL 3: To provide diagnostic and prescriptive software programs appropriate for high school students to support subject area testing and other special needs of students coming from diverse districts across the state	June 30, 2016	Yearly review of goals and assessment of progress by the Technology Advisory Committee.
GOAL 4: To provide resources for educators that enable them to effectively develop and incorporate curricula aligned with the Mississippi Curriculum Frameworks while designing advanced programs in the visual and performing arts and other disciplines	June 30, 2016	Yearly review of goals and assessment of progress by the Technology Advisory Committee.
GOAL 5: To enhance the MSA curriculum and serve as an arts curriculum resource to other districts through the use of distance learning	June 30, 2016	Yearly review of goals and assessment of progress by the Technology Advisory Committee.

3-Year Technology Plan
Mississippi School of the Arts
2013 – 2014, 14-15, 15-16

PROFESSIONAL DEVELOPMENT	TIMELINE	EVALUATION METHODS
	COMPLETION	
GOAL 6: To provide innovative, current professional development training for administrators, certified and classified staff to enable educators to successfully integrate technology in the classroom and facilitate campus wide operations	June 30, 2016	Yearly review of goals and assessment of progress by the Technology Advisory Committee.
GOAL 7: To produce a technology literate workforce capable of infusing technology into the classroom	June 30, 2016	Yearly review of goals and assessment of progress by the Technology Advisory Committee.
GOAL 8: To provide follow-up training for staff members on an individualized basis to assist in fully integrating technology	June 30, 2016	Yearly review of goals and assessment of progress by the Technology Advisory Committee.

INFRASTRUCTURE AND TELECOMMUNICATION SERVICES	TIMELINE	EVALUATION METHODS
	COMPLETION	
GOAL 9: To provide resources for staff and students to enable them to use the Internet to create web pages for individual departments and classrooms, post homework, current events, performance and exhibition schedules and other school related activities	June 30, 2016	Yearly review of goals and assessment of progress by the Technology Advisory Committee.
GOAL 10: To complete the wiring of campus facilities as renovation and restoration is complete	June 30, 2016	Yearly review of goals and assessment of progress by the Technology Advisory Committee.
GOAL 11: To integrate individual network applications into a single domain to increase security, use, and management	June 30, 2016	Yearly review of goals and assessment of progress by the Technology Advisory Committee.

3-Year Technology Plan
Mississippi School of the Arts
2013 – 2014, 14-15, 15-16

EQUITABLE ACCESS OF TECHNOLOGY	TIMELINE	EVALUATION METHODS
	COMPLETION	
GOAL 12: To increase the number of multimedia computers and decrease the number of users sharing units	June 30, 2016	Yearly review of goals and assessment of progress by the Technology Advisory Committee.
GOAL 13: To provide parents, students, and the community greater access to school learning resources, classroom assignments and school information	June 30, 2016	Yearly review of goals and assessment of progress by the Technology Advisory Committee.
GOAL 14: To continue the automation of the library media center and provide online database access for students, faculty, and parents	June 30, 2016	Yearly review of goals and assessment of progress by the Technology Advisory Committee.
GOAL 15: To automate food services programs	June 30, 2016	Yearly review of goals and assessment of progress by the Technology Advisory Committee.
GOAL 16: To install an access control system to interface with existing monitoring systems to improve security	June 30, 2016	Yearly review of goals and assessment of progress by the Technology Advisory Committee.

OVERALL PROCESS REVIEW	TIMELINE	EVALUATION METHODS
	COMPLETION	
ALL GOALS: Obtain input into overall planning process and methods from uninvolved third parties.	June 30, 2016	<p style="text-align: center;">Yearly review of planning process and methods by Tech Coordinator from another District.</p> <p style="text-align: center;">Ongoing review and evaluation of overall process by MDE OET staff.</p>

STATEMENT OF ASSURANCES

School District _____ Mississippi School of the Arts _____

The LEA, agency or consortium, in accordance with SB3350 and Mississippi Department of Education policies and procedures, submitting this local technology plan, hereby assures that:

1. The LEA is an equal opportunity employee and shall perform to all affirmative action and other applicable requirements; accordingly, the applicant does not discriminate nor permit discrimination in its operations or employment practices against any person or group of persons on the grounds of race, color, religion, national origin, handicap or sex in any manner prohibited by law. Further, the applicant agrees to comply with the Civil Rights Acts of 1964, Title IX of the Education Amendments of 1972, Section 504 of the Rehabilitation Act of 1973, the Age Discrimination Act of 1975 and the Americans with Disabilities Act.
2. The LEA agrees that the Mississippi Department of Education, or any of its duly authorized representatives, at any time during the terms of this technology plan, shall have access to, and the right to audit examine any pertinent books, documents, papers, and records of grantee related to this plan.
3. The LEA certifies that they have not been barred from contracting or otherwise doing business with the State or Federal Governments.
4. This plan, and all matters or issues collateral to it, shall be governed by, and construed in accordance with, the laws of the State of Mississippi.
5. This plan has been reviewed and approved by the District Technology Committee and the District Superintendent.
6. The district has submitted E-rate Form 479/Children’s Internet Protection Act (CIPA) and met all other E-rate requirements.

Signature of Superintendent: Suzanne Hirsch	Date
Chairperson, District Technology Committee: Homer Richardson	Date

District E-rate Coordinator/Contact:

Name: Suzanne Hirsch	Telephone #: 601-823-1300
School District: Mississippi School of the Arts	Fax #: 601-823-1555
Address: P O Box 229, Brookhaven, MS 39602	E-mail: MSAExecDir@mde.k12.ms.us

UNIVERSAL SERVICE (ERATE) CRITERIA CHECKLIST

The Mississippi Department of Education, Office of Educational Technology is certified by the Schools and Libraries Division to approve technology plans for participation in the Schools and Libraries Universal Service Program. Please use the checklist to determine if your plan has met the criteria outlined below.

Successful technology plans align the overall education or library service improvement objectives with the following five criteria. To qualify as an approved Technology Plan for a Universal Service Program discount, the plan must meet these criteria. It is critical that technology planning not be viewed or treated as a separate exercise dealing primarily with hardware and telecommunications infrastructure. There must be strong connections between the proposed physical infrastructure of the information technology and the plan for professional development, curriculum reform, and library service improvements.

CRITERIA CHECKLIST

____ The plan includes an assessment of the telecommunication services, hardware, software, and other services that will be needed to improve education.

____ The plan establishes clear goals and a realistic strategy for using telecommunications and information technology to improve education.

____ The plan has a professional development strategy to ensure that the staff knows how to use the new technologies to improve education.

____ The plan provides for a sufficient budget to acquire and maintain the hardware, software, professional development, and other services that will be needed to implement the strategy for improved education.

____ The plan includes an evaluation process that enables the school to monitor progress toward the specified goals and make mid-course corrections in response to new developments and opportunities as they arise.

Technology Coordinator

Date

District Superintendent

Date