

North Pike School District
Safe Return to In-Person Instruction
2021-2022

First Adopted: July 2020



Revised: May 2021

INTRODUCTION

The North Pike School District has formed subcommittees comprised of district administrators, teachers, and parents to focus on the key components that are essential in reopening schools for the upcoming school year.

Academic



Extracurricular



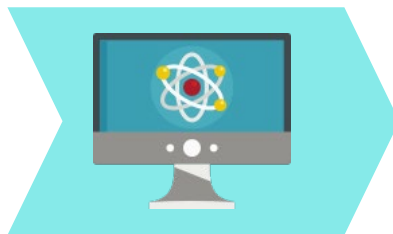
Transportation



Food Services



Virtual Learning



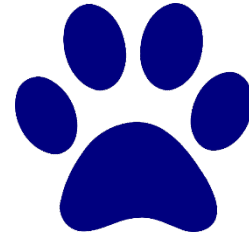
Health & Safety



Special Education

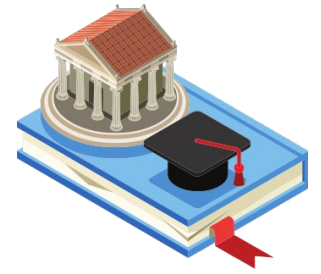


NORTH PIKE SCHOOL DISTRICT



The North Pike School District understands the importance of the decision on how and when to return to school. After thoughtful consideration and planning, the North Pike School District has reached the decision to resume school in a full traditional setting. Please know that this plan is fluid and subject to change based on future recommendations from our federal, state, and local agencies. As always, our top priority is the health and safety of our students and staff. We appreciate the support and cooperation of our parents, students, staff, and community stakeholders.

Traditional Model



ACADEMIC PROGRAMMING:

- Students will attend school based on the Traditional Model
- All North Pike Students will follow the 2021-2022 School Calendar
- The first day of school for teachers is August 2nd
- The first day of school for students is August 5th
- The last day of school is May 20th.
- Students will report to school by 7:45 and be dismissed by 3:15 each day
- Staff and Students will continue to administer the Self-Assessment Inventory at home before arriving at school
- Extended day programs will be available throughout school year to address learning loss
- Summer Programs will be offered at all campuses to decrease learning loss. Please contact your child's school for more information.
- All students will have the opportunity to checkout a chromebook for the 2021-2022 school year
- At this time, there will be no Virtual Options available

OPERATIONS:

- Students and Staff will follow normal dismissal protocols
- Students will report to school by 7:45 and be dismissed by 3:15 each day
- Please refer to the Student Handbook for checkout times for each school
- North Pike School District will adhere to local and state guidelines as it pertains to mask mandates
- All students will resume eating breakfast and lunch in the cafeteria
- Visitors will be welcomed on campus

Family and Community Support:

- Parent/Teacher conferences are available on each campus
- Guardians will have an opportunity to meet the teacher during registration
- All EL students will be assessed for placement and if the student qualifies for services a plan will be on file in the student's cumulative folder
- Special Populations Students will be tracked and monitored to ensure that academic and social emotional needs are being met according to their IEP

Communications:

- Frequent and ongoing communication will ensure students, parents, and employees feel comfortable returning to schools and district offices.
- Plans for proactive communication that share information, identify concerns, and address concerns will be implemented with all stakeholders.
- The district will continue to partner with local public health and government officials to garner accurate data for our decision-making processes.
- Public Information will be provided to families and community partners using district and school websites, School Status, local media outlets, and Facebook
- Health information that identifies an individual will not be published.
- The district will work to confirm or dispel misinformation about positive COVID-19 cases and required quarantine that affects classrooms and or/groups of students.
- The district will work to contact parents immediately via various communication channels if their student is in an affected group.

District Website: www.npsd.k12.ms.us

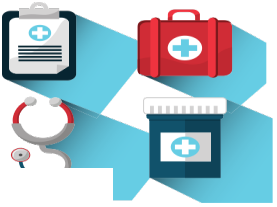
Facebook: North Pike School District

Health and Safety:

- The district is in the process of hiring a Behavior Specialist to aid in addressing students social emotional needs
- The district also plans to hire Academic Loss Coordinators to help with the implementation of an after school program that will address needs
- Air quality issues and concerns have been addressed by HVAC upgrades to include fresh air mix, viral and bacterial filtration, and UV sanitation
- Staff and Students will still be asked to complete the Self Assessment at home before arriving at school
- School Nurses are located on all campuses to help with health and medical concerns
- North Pike School District will adhere to local and state guidelines as it pertains to mask and other health and safety mandates
- Sanitizing and cleaning protocols will remain in place to aid in preventing the spread of germs

Technology:

- All students will have the opportunity to checkout a chromebook from their campus
- The chromebook will be utilized to enhance educational experiences throughout the school year
- Staff and students will also continue to use Google Classroom and Schoology as on-line learning platforms
- Students will be able to effortlessly shift to A/B or Virtual Schedules if needed at any point during the 2021-2022 school year



**NORTH PIKE SCHOOL DISTRICT
DAILY STAFF SELF-ASSESSMENT**

2020-2021

PLEASE ANSWER THE FOLLOWING QUESTIONS:

In the last 24 hours, have you had ANY of the following symptoms that CAN NOT be attributed to another illness such as allergies, etc. ?	YES	NO
<p>CIRCLE ALL THAT APPLY:</p> <ul style="list-style-type: none"> • Fever or chills • Cough • Shortness of breath or difficulty breathing • Fatigue • Muscle or body aches • Headache • Recent onset of loss of taste or smell • Sore throat • Congestion • Nausea or vomiting • Diarrhea 		

IF NO TO ALL QUESTIONS, PROCEED TO WORK

IF YES TO 1 OR MORE SYMTOMS, EMPLOYEE SHOULD CONTACT THEIR HEALTH CARE PROVIDER TO DETERMINE IF FURTHER EVALUATION FOR COVID 19 IS NEEDED.EMPLOYEE IS TO ALSO CONTACT THEIR SCHOOL PRINCIPAL.

**NORTH PIKE SCHOOL DISTRICT
STUDENT ASSESSMENT FOR GUARDIANS
2020-2021**

PLEASE ANSWER THE FOLLOWING QUESTIONS:

<p>In the past 72 hours has your child had a fever of 100 or higher?</p> <p>If YES, your child will need to remain home until fever free for 72 hours without medication.</p> <p>IF NO, YOUR CHILD SHOULD PROCEED TO SCHOOL</p>	YES	NO
<p>In the last 24 hours, have you had ANY of the following symptoms that CAN NOT be attributed to another illness such as allergies, etc. ?</p> <p>CIRCLE ALL THAT APPLY:</p> <ul style="list-style-type: none"> • Cough • Shortness of breath or difficulty breathing • Fatigue • Muscle or body aches • Headache • Recent onset of loss of taste or smell • Sore throat • Congestion • Nausea or vomiting • Diarrhea <p>IF YES TO 2 OR MORE SYMPTOMS, GUARDIAN SHOULD CONTACT THEIR HEALTH CARE PROVIDER TO DETERMINE IF FURTHER EVALUATION FOR COVID 19 IS NEEDED.GUARDIAN IS TO ALSO CONTACT THEIR CHILD’S SCHOOL.</p>	YES	NO

2021-2022 District Calendar

2021-2022 North Pike School District Calendar

July 2021							August 2021							September 2021						
Su	Mo	Tu	We	Th	Fr	Sa	Su	Mo	Tu	We	Th	Fr	Sa	Su	Mo	Tu	We	Th	Fr	Sa
				1	2	3	1	2	3	4	5	6	7				1	2	3	4
4	5	6	7	8	9	10	8	9	10	11	12	13	14	5	6	7	8	9	10	11
11	12	13	14	15	16	17	15	16	17	18	19	20	21	12	13	14	15	16	17	18
18	19	20	21	22	23	24	22	23	24	25	26	27	28	19	20	21	22	23	24	25
25	26	27	28	29	30	31	29	30	31					26	27	28	29	30		

October 2021							November 2021							December 2021						
Su	Mo	Tu	We	Th	Fr	Sa	Su	Mo	Tu	We	Th	Fr	Sa	Su	Mo	Tu	We	Th	Fr	Sa
					1	2	1	2	3	4	5	6				1	2	3	4	
3	4	5	6	7	8	9	7	8	9	10	11	12	13	5	6	7	8	9	10	11
10	11	12	13	14	15	16	14	15	16	17	18	19	20	12	13	14	15	16	17	18
17	18	19	20	21	22	23	21	22	23	24	25	26	27	19	20	21	22	23	24	25
24	25	26	27	28	29	30	28	29	30					26	27	28	29	30	31	
31																				

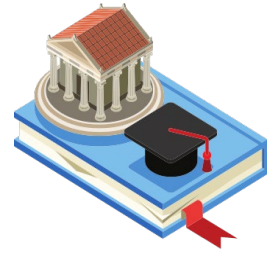
January 2022							February 2022							March 2022						
Su	Mo	Tu	We	Th	Fr	Sa	Su	Mo	Tu	We	Th	Fr	Sa	Su	Mo	Tu	We	Th	Fr	Sa
						1			1	2	3	4	5			1	2	3	4	5
2	3	4	5	6	7	8	6	7	8	9	10	11	12	6	7	8	9	10	11	12
9	10	11	12	13	14	15	13	14	15	16	17	18	19	13	14	15	16	17	18	19
16	17	18	19	20	21	22	20	21	22	23	24	25	26	20	21	22	23	24	25	26
23	24	25	26	27	28	29	27	28						27	28	29	30	31		
30	31																			

April 2022							May 2022							June 2022						
Su	Mo	Tu	We	Th	Fr	Sa	Su	Mo	Tu	We	Th	Fr	Sa	Su	Mo	Tu	We	Th	Fr	Sa
					1	2	1	2	3	4	5	6	7				1	2	3	4
3	4	5	6	7	8	9	8	9	10	11	12	13	14	5	6	7	8	9	10	11
10	11	12	13	14	15	16	15	16	17	18	19	20	21	12	13	14	15	16	17	18
17	18	19	20	21	22	23	22	23	24	25	26	27	28	19	20	21	22	23	24	25
24	25	26	27	28	29	30	29	30	31					26	27	28	29	30		

- Holidays
- First/Last Day/Return from Breaks
- Exams
- ! End Term
- Staff Development
- 60% Day
- ↓ Graduation

Make-up day's criteria In the case of school closure due to weather, natural disaster, extenuating circumstances, act of God, etc. the following days will be designated as make-up days in sequential order. Day(s) missed prior to Thanksgiving Holidays will be made up on Oct. 11, and Nov. 22, 23, 24. Ex. If one day is missed make-up day will be Oct. 11, if two days are missed make-up days will be Oct. 11, 12, if additional days are needed they will be made-up during Nov. 22-26 according to need. Day(s) missed prior to Spring Break Holidays will be made up on Apr. 15, 18 and Mar. 14. Ex. If one day is missed make-up day will be Apr. 18, if two days are missed make-up days will be Apr. 18-19, if three days are missed make-up days will be Apr. 15, 18 and/or Mar. 14. Day(s) missed prior to Graduation will be made up on May 23-24. Ex. If one day is missed make-up day will be May 23, etc. *Any additional days would be made-up at the end of the school year in May.

A/B HYBRID MODEL-This Model will be utilized if needed per local and state mandates



- Students will attend school for 180 days.
- Hours of operation will be from 7:30-2:15 for all traditional students.
- Extra time will be utilized to allow teachers to work specifically on virtual and remote learning, develop remedial lessons, and work on vertical and horizontal curriculum alignment.
- Schools will be open and ready to receive students by 7:00 a.m. each morning.
- The tardy bell will ring at 7:25 a.m. and the regular school day will begin at 7:30 a.m.
- Students will report directly to their first class of the day, breakfast will be grab and go.
- Students will be taught social distance routines and procedures along with classroom routines and procedures the first two weeks of school.
- Seating arrangements will be modified to place desks and tables in rows as distant between each other as classroom spaces allow.
- Classes will spread seating as much as is possible, seating will all be forward facing.
- Discussion in class will be whole group, students will not participate in center rotations.
- K-8 Teachers will report to their assigned class each morning and remain stationary as much as possible.
- 9th-12th will report to each class with social distancing precautions in place
- Hand Sanitizer will be available in all classrooms and offices and sanitizer dispensers will be installed at all entrances, bathrooms, and common areas.
- Masks and/or Shields will be provided to all staff for instruction
- Teachers and students will be required to wear masks while on buses and on school campuses.
- Non-compliance of mask policy on bus or on school campuses will result in disciplinary actions.
- Students in grades K-8 will have their own set of school supplies for individual use.
- Lunches for grades K-8 students will be delivered to classrooms in combination with a rotation schedule for cafeteria use to reduce student count within the cafeteria spaces.
- Additional space will be utilized along with an additional lunch period will be implemented to reduce students in grades 9-12 within the cafeteria spaces.