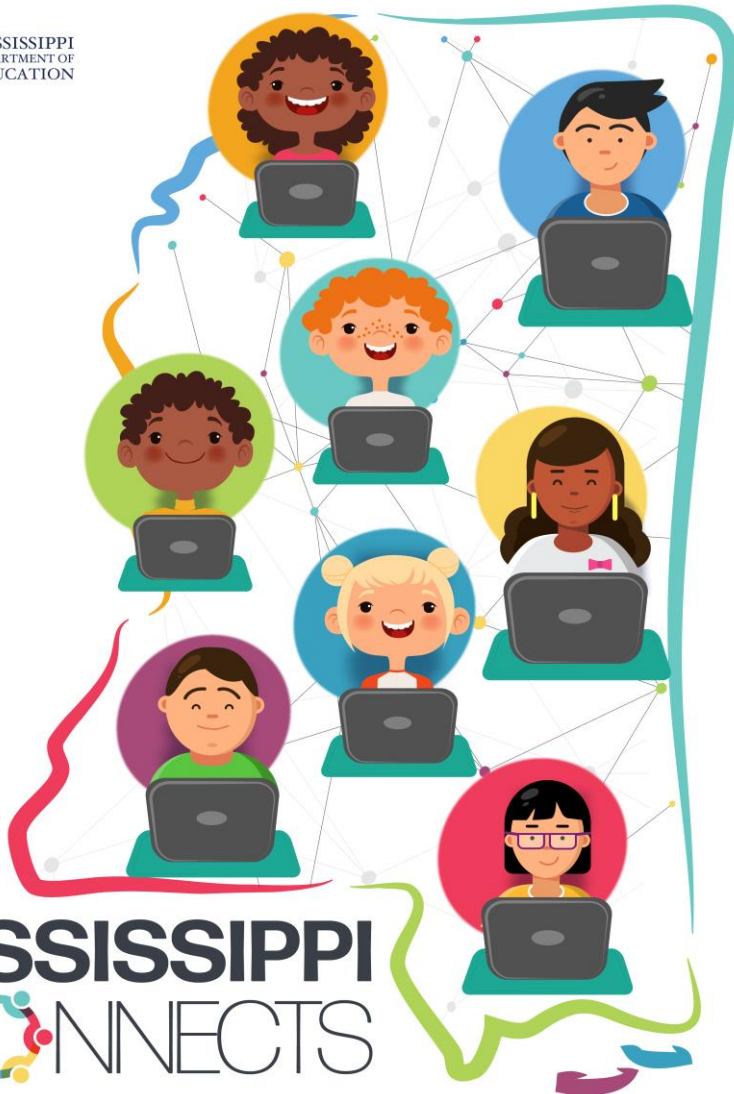


As of Thursday, October 1, 2020

SB3044: The Equity in Distance Learning Act



ORDERED DEVICES

Chrome Total Count	Independent Chrome Count	Windows Total Count	Independent Windows Count
205,098	46,796	65,776	6,881

MacBook Total Count	Independent MacBook Count	iPad Total Count	Independent iPad Count
13,800	7,680	39,265	4,288



Devices, Learning Management Systems and Costs

#	LEA Name	Device Total #	Device Cost	LMS Total #	LMS Cost	TOTAL COST
1	Aberdeen School District	1,175	\$ 483,548.64	0	\$ -	\$ 483,548.64
2	Alcorn School District	2,395	\$ 1,920,521.05	1,754	\$ 11,562.00	\$ 1,932,083.05
3	Ambition Preparatory Charter School	160	\$ 74,103.04	0	\$ -	\$ 74,103.04
4	Amite County School District	1,040	\$ 435,753.24	0	\$ -	\$ 435,753.24
5	Amory School District	1,275	\$ 576,799.41	0	\$ -	\$ 576,799.41
6	Attala County School District	747	\$ 351,564.48	1,143	\$ 7,703.82	\$ 359,268.30
7	Baldwyn School District	0	\$ -	875	\$ 5,897.50	\$ 5,897.50
8	Bay St. Louis - Waveland School District	1,680	\$ 783,064.94	0	\$ -	\$ 783,064.94
9	Benton County School District	1,340	\$ 591,038.40	1,003	\$ 6,760.22	\$ 597,798.62
10	Biloxi Public School District	4,770	\$ 1,910,027.68	0	\$ -	\$ 1,910,027.68
11	Booneville School District	800	\$ 370,264.20	1,280	\$ 8,627.20	\$ 378,891.40
12	Brookhaven School District	2,075	\$ 960,942.65	3,155	\$ 21,264.70	\$ 982,207.35
13	Calhoun County School District	1,680	\$ 767,034.00	0	\$ -	\$ 767,034.00
14	Canton Public School District	3,589	\$ 1,487,733.43	1,561	\$ 10,521.14	\$ 1,498,254.57
15	Carroll County School District	975	\$ 402,592.61	1,075	\$ 7,245.50	\$ 409,838.11
16	Chickasaw County School District	490	\$ 205,306.82	0	\$ -	\$ 205,306.82
17	Choctaw County School District	869	\$ 355,411.50	0	\$ -	\$ 355,411.50
18	Claiborne County School District	1,101	\$ 533,386.28	1,368	\$ 13,870.32	\$ 547,256.60
19	Clarksdale Collegiate	210	\$ 91,495.58	245	\$ 7,592.50	\$ 99,088.08
20	Clarksdale Municipal School District	2,214	\$ 909,583.00	0	\$ -	\$ 909,583.00
21	Cleveland School District	1,415	\$ 581,327.40	0	\$ -	\$ 581,327.40
22	Clinton Public School District	1,975	\$ 2,053,000.55	4,500	\$ 30,330.00	\$ 2,083,330.55
23	Coahoma County School District	1,645	\$ 694,031.30	0	\$ -	\$ 694,031.30
24	Coffeeville School District	518	\$ 231,767.78	240	\$ 6,267.60	\$ 238,035.38
25	Columbia School District	1,579	\$ 613,900.90	1,739	\$ 11,720.86	\$ 625,621.76
26	Columbus Municipal School District	2,835	\$ 2,043,422.37	1,850	\$ 18,025.00	\$ 2,061,447.37
27	Copiah County School District	2,452	\$ 1,777,259.71	0	\$ -	\$ 1,777,259.71
28	Corinth School District	3,200	\$ 2,938,133.00	2,850	\$ 19,209.00	\$ 2,957,342.00
29	Covington County School District	3,077	\$ 1,376,916.50	0	\$ -	\$ 1,376,916.50
30	Desoto County School District	27,770	\$ 19,775,819.37	0	\$ -	\$ 19,775,819.37
31	East Jasper Consolidated School District	635	\$ 293,767.55	0	\$ -	\$ 293,767.55
32	East Tallahatchie Consolidated School District	1,448	\$ 642,348.90	1,090	\$ 7,085.00	\$ 649,433.90

33	Enterprise School District	663	\$ 277,792.69	0	\$ -	\$ 277,792.69
34	Forest Municipal School District	900	\$ 422,684.37	0	\$ -	\$ 422,684.37
35	Forrest County AHS	490	\$ 204,966.02	0	\$ -	\$ 204,966.02
36	Forrest County School District	1,335	\$ 647,674.66	305	\$ 6,557.50	\$ 654,232.16
37	Franklin County School District	1,223	\$ 512,429.05	0	\$ -	\$ 512,429.05
38	George County School District	2,398	\$ 998,032.23	0	\$ -	\$ 998,032.23
39	Greene County School District	1,491	\$ 640,045.16	0	\$ -	\$ 640,045.16
40	Greenville Public School District	4,569	\$ 3,319,605.55	4,585	\$ 30,902.90	\$ 3,350,508.45
41	Greenwood-Leflore Consolidated School District	2,901	\$ 1,398,893.45	4,800	\$ 32,352.00	\$ 1,431,245.45
42	Grenada School District	2,068	\$ 755,399.04	3,500	\$ 23,590.00	\$ 778,989.04
43	Gulfport School District	4,727	\$ 2,200,971.82	0	\$ -	\$ 2,200,971.82
44	Hancock County School District	4,762	\$ 2,108,906.80	0	\$ -	\$ 2,108,906.80
45	Harrison County School District	16,000	\$ 11,026,622.50	14,642	\$ 95,173.00	\$ 11,121,795.50
46	Hattiesburg Public School District	3,983	\$ 1,721,455.21	3,719	\$ 24,173.50	\$ 1,745,628.71
47	Hazlehurst City School District	1,656	\$ 1,007,022.98	0	\$ -	\$ 1,007,022.98
48	Hinds County School District	3,196	\$ 1,550,976.96	0	\$ -	\$ 1,550,976.96
49	Hollandale School District	575	\$ 271,389.75	650	\$ 4,381.00	\$ 275,770.75
50	Holly Springs School District	1,320	\$ 588,140.82	1,172	\$ 7,618.00	\$ 595,758.82
51	Holmes County Consolidated School District	0	\$ -	0	\$ -	\$ -
52	Houston School District	1,188	\$ 581,738.62	0	\$ -	\$ 581,738.62
53	Humphreys County School District	1,706	\$ 724,477.59	0	\$ -	\$ 724,477.59
54	Itawamba County School District	3,177	\$ 1,292,902.87	2,900	\$ 19,546.00	\$ 1,312,448.87
55	Jackson County School District	6,650	\$ 3,085,448.76	11,000	\$ 74,140.00	\$ 3,159,588.76
56	Jackson Public School District	17,882	\$ 7,450,504.46	13,255	\$ 89,338.70	\$ 7,539,843.16
57	Jefferson County School District	1,330	\$ 531,634.50	1,130	\$ 7,616.20	\$ 539,250.70
58	Jefferson Davis County School District	1,405	\$ 650,172.44	1,375	\$ 13,917.50	\$ 664,089.94
59	Jones County School District	9,034	\$ 3,855,141.49	0	\$ -	\$ 3,855,141.49
60	Kemper County School District	850	\$ 386,203.18	0	\$ -	\$ 386,203.18
61	Kosciusko School District	1,263	\$ 595,183.30	0	\$ -	\$ 595,183.30
62	Lafayette County School District	2,786	\$ 1,378,757.27	0	\$ -	\$ 1,378,757.27
63	Lamar County School District	7,329	\$ 3,606,301.30	0	\$ -	\$ 3,606,301.30
64	Lauderdale County School District	4,119	\$ 1,953,066.66	4,600	\$ 31,004.00	\$ 1,984,070.66
65	Laurel School District	3,316	\$ 1,465,987.28	3,200	\$ 21,568.00	\$ 1,487,555.28
66	Lawrence County School District	2,215	\$ 1,453,587.18	2,200	\$ 14,828.00	\$ 1,468,415.18

67	Leake County School District	3,025	\$ 1,277,203.09	2,705	\$ 28,232.50	\$ 1,305,435.59
68	Lee County School District	5,680	\$ 2,445,151.96	0	\$ -	\$ 2,445,151.96
69	Leflore Legacy Academy	141	\$ 58,561.97	0	\$ -	\$ 58,561.97
70	Leland School District	941	\$ 425,096.63	0	\$ 6,699.56	\$ 431,796.19
71	Lincoln County School District	2,435	\$ 1,102,662.26	0	\$ -	\$ 1,102,662.26
72	Long Beach School District	2,287	\$ 907,478.88	3,093	\$ 20,104.50	\$ 927,583.38
73	Louisville Municipal School District	2,280	\$ 937,657.54	0	\$ -	\$ 937,657.54
74	Lowndes County School District	5,594	\$ 4,471,754.20	5,393	\$ 35,054.50	\$ 4,506,808.70
75	Madison County School District	10,125	\$ 4,283,104.02	13,500	\$ 90,990.00	\$ 4,374,094.02
76	Marion County School District	2,236	\$ 1,266,323.78	0	\$ -	\$ 1,266,323.78
77	Marshall County School District	3,000	\$ 1,250,266.31	2,900	\$ 19,546.00	\$ 1,269,812.31
78	McComb School District	2,532	\$ 1,214,897.77	2,500	\$ 22,174.00	\$ 1,237,071.77
79	Meridian Public School District	3,813	\$ 1,713,182.24	2,630	\$ 17,726.20	\$ 1,730,908.44
80	Midtown Public Charter School	173	\$ 87,342.88	290	\$ 1,954.60	\$ 89,297.48
81	Mississippi School of the Arts	122	\$ 98,626.08	0	\$ -	\$ 98,626.08
82	Mississippi Schools for the Deaf and the Blind	163	\$ 138,058.85	125	\$ 5,492.50	\$ 143,551.35
83	Monroe County School District	2,386	\$ 1,064,947.58	0	\$ -	\$ 1,064,947.58
84	Moss Point Separate School District	1,720	\$ 718,171.61	0	\$ -	\$ 718,171.61
85	Natchez-Adams School District	3,350	\$ 1,394,067.22	3,100	\$ 20,894.00	\$ 1,414,961.22
86	Neshoba County School District	1,697	\$ 879,657.48	1,850	\$ 12,469.00	\$ 892,126.48
87	Nettleton School District	864	\$ 381,298.55	1,271	\$ 8,566.54	\$ 389,865.09
88	New Albany School District	2,548	\$ 1,123,198.90	2,500	\$ 16,850.00	\$ 1,140,048.90
89	Newton County School District	2,000	\$ 840,285.20	0	\$ -	\$ 840,285.20
90	Newton Municipal School District	1,036	\$ 482,445.11	625	\$ 8,862.50	\$ 491,307.61
91	North Bolivar Consolidated School District	978	\$ 400,142.10	450	\$ 3,033.00	\$ 403,175.10
92	North Panola School District	125	\$ 52,374.19	0	\$ -	\$ 52,374.19
93	North Pike School District	2,335	\$ 978,349.82	0	\$ -	\$ 978,349.82
94	North Tippah School District	907	\$ 411,069.82	0	\$ -	\$ 411,069.82
95	Noxubee County School District	1,620	\$ 1,246,893.75	1,425	\$ 15,262.50	\$ 1,262,156.25
96	Ocean Springs School District	4,033	\$ 1,520,132.15	5,982	\$ 53,883.00	\$ 1,574,015.15
97	Okolona Municipal School District	285	\$ 119,413.15	0	\$ -	\$ 119,413.15
98	Oxford School District	1,743	\$ 780,097.35	5,000	\$ 20,884.50	\$ 800,981.85
99	Pascagoula Gautier School District	5,022	\$ 2,252,543.77	3,200	\$ 21,568.00	\$ 2,274,111.77
100	Pass Christian Public School District	1,753	\$ 713,565.92	2,070	\$ 13,951.80	\$ 727,517.72

101	Pearl Public School District	4,677	\$ 2,422,289.54	0	\$ -	\$ 2,422,289.54
102	Pearl River County School District	3,350	\$ 1,403,628.23	0	\$ -	\$ 1,403,628.23
103	Perry County School District	812	\$ 401,438.20	0	\$ -	\$ 401,438.20
104	Petal School District	2,379	\$ 1,015,588.19	0	\$ -	\$ 1,015,588.19
105	Philadelphia Public School District	811	\$ 652,023.46	1,000	\$ 11,390.00	\$ 663,413.46
106	Picayune School District	3,185	\$ 1,413,400.45	0	\$ -	\$ 1,413,400.45
107	Pontotoc City School District	1,277	\$ 503,460.24	1,879	\$ 12,664.46	\$ 516,124.70
108	Pontotoc County School District	2,984	\$ 1,332,503.96	4,000	\$ 26,960.00	\$ 1,359,463.96
109	Poplarville School District	1,550	\$ 649,439.93	0	\$ -	\$ 649,439.93
110	Prentiss County School District	2,800	\$ 1,209,886.47	2,400	\$ 16,176.00	\$ 1,226,062.47
111	Quitman County School District	1,110	\$ 808,869.29	0	\$ -	\$ 808,869.29
112	Quitman School District	1,138	\$ 571,058.84	550	\$ 8,357.00	\$ 579,415.84
113	Rankin County School District	14,416	\$ 7,754,248.28	11,000	\$ 72,820.00	\$ 7,827,068.28
114	Reimagine Prep	303	\$ 139,403.81	600	\$ 8,694.00	\$ 148,097.81
115	Richton School District	740	\$ 326,829.18	0	\$ -	\$ 326,829.18
116	Scott County School District	3,000	\$ 1,347,548.98	2,385	\$ 20,724.90	\$ 1,368,273.88
117	Senatobia Municipal School District	1,532	\$ 641,152.58	0	\$ -	\$ 641,152.58
118	Simpson County School District	3,811	\$ 1,596,784.23	0	\$ -	\$ 1,596,784.23
119	Smilow Collegiate	173	\$ 82,054.88	400	\$ 7,346.00	\$ 89,400.88
120	Smilow Prep	303	\$ 139,753.81	600	\$ 8,694.00	\$ 148,447.81
121	Smith County School District	2,800	\$ 1,229,095.10	0	\$ -	\$ 1,229,095.10
122	South Delta School District	837	\$ 375,246.14	0	\$ -	\$ 375,246.14
123	South Panola School District	2,050	\$ 883,304.25	0	\$ -	\$ 883,304.25
124	South Pike School District	1,860	\$ 817,904.25	1,750	\$ 11,795.00	\$ 829,699.25
125	South Tippah School District	1,604	\$ 798,715.42	2,651	\$ 17,867.74	\$ 816,583.16
126	Starkville Oktibbeha Consolidated School District	4,700	\$ 2,144,616.45	2,500	\$ 16,850.00	\$ 2,161,466.45
127	Stone County School District	2,561	\$ 1,183,649.78	0	\$ -	\$ 1,183,649.78
128	Sunflower County Consolidated School District	4,005	\$ 2,196,162.40	3,700	\$ 24,938.00	\$ 2,221,100.40
129	Tate County School District	1,378	\$ 700,104.78	0	\$ -	\$ 700,104.78
130	Tishomingo County School District	2,438	\$ 1,128,259.20	1,656	\$ 11,161.44	\$ 1,139,420.64
131	Tunica County School District	2,110	\$ 884,076.29	1,950	\$ 13,143.00	\$ 897,219.29
132	Tupelo Public School District	5,438	\$ 2,584,185.60	7,600	\$ 51,224.00	\$ 2,635,409.60
133	Union County School District	2,375	\$ 1,085,887.16	0	\$ -	\$ 1,085,887.16
134	Union Public School District	760	\$ 339,476.70	980	\$ 6,605.20	\$ 346,081.90

135	Vicksburg Warren School District	8,280	\$ 3,477,309.88	0	\$ -	\$ 3,477,309.88
136	Walthall County School District	1,580	\$ 659,652.13	0	\$ -	\$ 659,652.13
137	Water Valley School District	1,015	\$ 449,041.56	0	\$ -	\$ 449,041.56
138	Wayne County School District	2,000	\$ 837,987.00	0	\$ -	\$ 837,987.00
139	Webster County School District	1,375	\$ 576,116.06	0	\$ -	\$ 576,116.06
140	West Bolivar Consolidated School District	1,080	\$ 482,321.97	0	\$ -	\$ 482,321.97
141	West Jasper Consolidated School District	1,540	\$ 690,840.21	0	\$ -	\$ 690,840.21
142	West Point Consolidated School District	3,236	\$ 1,406,297.93	3,185	\$ 21,466.90	\$ 1,582,638.00
143	West Tallahatchie School District	783	\$ 352,391.76	0	\$ -	\$ 352,391.76
144	Western Line School District	2,135	\$ 951,662.10	1,846	\$ 11,999.00	\$ 963,661.10
145	Wilkinson County School District	1,194	\$ 527,832.69	0	\$ -	\$ 527,832.69
146	Winona Montgomery Consolidated School District	1,339	\$ 574,709.36	0	\$ -	\$ 574,709.36
147	Yazoo City Municipal School District	2,625	\$ 1,141,754.13	0	\$ -	\$ 1,141,754.13
148	Yazoo County School District	1,545	\$ 579,355.20	1,494	\$ 10,069.56	\$ 589,424.76

	TOTAL	389,584	\$ 195,401,322	213,496	\$ 1,525,534	\$ 197,081,730
--	--------------	----------------	-----------------------	----------------	---------------------	-----------------------

State Funding and Local Education Agency (LEA) Funding

#	LEA Name	ADM	MDE Need\$	Windows Supplemental Grant	TOTAL LEA Match	Negative Variance1
1	Aberdeen School District	\$313,707	\$47,382	\$0	\$72,218	(\$50,242)
2	Alcorn School District	\$864,760	\$395,678	\$0	\$252,087	(\$419,558)
3	Ambition Preparatory Charter School	\$37,611	\$12,817	\$0	\$10,085	(\$13,590)
4	Amite County School District	\$264,129	\$52,557	\$0	\$63,337	(\$55,729)
5	Amory School District	\$457,026	\$8,515	\$9,122	\$93,108	(\$9,029)
6	Attala County School District	\$282,935	\$5,777	\$6,689	\$57,742	(\$6,125)
7	Baldwyn School District	\$218,541	\$0	\$0	\$43,708	\$0
8	Bay St. Louis - Waveland School District	\$498,911	\$75,111	\$14,595	\$114,804	(\$79,644)
9	Benton County School District	\$285,784	\$109,657	\$6,993	\$79,088	(\$116,276)
10	Biloxi Public School District	\$1,737,498	\$0	\$15,203	\$347,500	\$0
11	Booneville School District	\$360,150	\$0	\$6,081	\$72,030	\$0
12	Brookhaven School District	\$773,582	\$16,828	\$15,872	\$158,082	(\$17,843)
13	Calhoun County School District	\$650,208	\$0	\$10,946	\$130,042	\$0
14	Canton Public School District	\$932,288	\$167,898	\$0	\$220,037	(\$178,031)
15	Carroll County School District	\$254,442	\$44,217	\$4,561	\$59,732	(\$46,886)
16	Chickasaw County School District	\$135,911	\$18,676	\$0	\$30,917	(\$19,803)
17	Choctaw County School District	\$342,770	\$0	\$4,500	\$68,554	\$0
18	Claiborne County School District	\$378,956	\$37,430	\$7,906	\$83,277	(\$39,689)
19	Clarksdale Collegiate	\$69,808	\$6,508	\$608	\$15,263	(\$6,901)
20	Clarksdale Municipal School District	\$631,688	\$67,050	\$0	\$139,748	(\$71,097)
21	Cleveland School District	\$910,348	\$0	\$0	\$182,070	\$0
22	Clinton Public School District	\$1,495,308	\$127,839	\$0	\$324,629	(\$135,554)
23	Coahoma County School District	\$331,942	\$129,206	\$3,649	\$92,230	(\$137,004)
24	Coffeetown School District	\$126,509	\$37,017	\$2,554	\$32,705	(\$39,251)
25	Columbia School District	\$453,892	\$35,814	\$0	\$97,941	(\$37,975)
26	Columbus Municipal School District	\$948,814	\$336,910	\$161,335	\$257,145	(\$357,244)
27	Copiah County School District	\$698,646	\$349,402	\$149,112	\$209,610	(\$370,490)
28	Corinth School District	\$712,608	\$930,037	\$0	\$328,529	(\$986,168)
29	Covington County School District	\$773,298	\$191,898	\$15,203	\$193,039	(\$203,479)
30	Desoto County School District	\$9,760,815	\$2,939,078	\$1,419,484	\$2,539,979	(\$3,116,463)

31	East Jasper Consolidated School District	\$233,642	\$5,927	\$0	\$47,914	(\$6,285)
32	East Tallahatchie Consolidated School District	\$278,946	\$136,535	\$6,081	\$83,096	(\$144,776)
33	Enterprise School District	\$255,296	\$0	\$0	\$51,059	\$0
34	Forest Municipal School District	\$472,412	\$0	\$7,906	\$94,482	\$0
35	Forrest County AHS	\$160,130	\$5,667	\$0	\$33,159	(\$6,009)
36	Forrest County School District	\$622,000	\$0	\$13,075	\$124,400	\$0
37	Franklin County School District	\$348,468	\$41,705	\$0	\$78,035	(\$44,222)
38	George County School District	\$1,145,415	\$0	\$0	\$229,083	\$0
39	Greene County School District	\$496,631	\$15,711	\$8,575	\$102,469	(\$16,659)
40	Greenville Public School District	\$1,155,957	\$745,683	\$277,852	\$380,328	(\$790,688)
41	Greenwood-Leflore Consolidated School District	\$1,307,540	\$0	\$24,325	\$261,508	\$0
42	Grenada School District	\$1,092,988	\$0	\$0	\$218,598	\$0
43	Gulfport School District	\$1,845,486	\$0	\$33,143	\$369,097	\$0
44	Hancock County School District	\$1,246,850	\$262,261	\$19,886	\$301,822	(\$278,089)
45	Harrison County School District	\$4,171,932	\$2,322,159	\$866,577	\$1,298,818	(\$2,462,310)
46	Hattiesburg Public School District	\$1,059,651	\$205,687	\$9,122	\$253,068	(\$218,101)
47	Hazlehurst City School District	\$414,287	\$201,550	\$54,306	\$123,167	(\$213,714)
48	Hinds County School District	\$1,557,707	\$0	\$0	\$311,541	\$0
49	Hollandale School District	\$151,297	\$40,067	\$3,649	\$38,273	(\$42,485)
50	Holly Springs School District	\$333,937	\$83,595	\$6,081	\$83,506	(\$88,640)
51	Holmes County Consolidated School District	\$820,596	\$0	\$0	\$164,119	\$0
52	Houston School District	\$486,944	\$0	\$0	\$97,389	\$0
53	Humphreys County School District	\$420,840	\$94,943	\$4,865	\$103,157	(\$100,673)
54	Itawamba County School District	\$979,301	\$55,356	\$12,162	\$206,932	(\$58,697)
55	Jackson County School District	\$2,593,994	\$0	\$51,873	\$518,799	\$0
56	Jackson Public School District	\$6,192,649	\$42,694	\$12,162	\$1,247,068	(\$45,270)
57	Jefferson County School District	\$311,712	\$70,394	\$6,081	\$76,421	(\$74,642)
58	Jefferson Davis County School District	\$381,805	\$90,295	\$1,824	\$94,420	(\$95,745)
59	Jones County School District	\$2,454,379	\$395,116	\$16,784	\$569,899	(\$418,963)
60	Kemper County School District	\$259,570	\$30,366	\$6,081	\$57,987	(\$32,198)
61	Kosciusko School District	\$605,474	\$0	\$12,162	\$121,095	\$0
62	Lafayette County School District	\$806,634	\$181,336	\$912	\$197,594	(\$192,281)
63	Lamar County School District	\$2,992,610	\$6,711	\$0	\$599,864	(\$7,116)
64	Lauderdale County School District	\$1,753,738	\$0	\$0	\$350,748	\$0

65	Laurel School District	\$842,535	\$204,087	\$15,203	\$209,325	(\$216,405)
66	Lawrence County School District	\$578,691	\$295,471	\$106,118	\$174,832	(\$313,303)
67	Leake County School District	\$770,733	\$168,361	\$0	\$187,819	(\$178,522)
68	Lee County School District	\$1,905,891	\$69,937	\$0	\$395,166	(\$74,158)
69	Leflore Legacy Academy	\$34,191	\$7,756	\$0	\$8,390	(\$8,225)
70	Leland School District	\$215,976	\$74,353	\$4,561	\$58,066	(\$78,840)
71	Lincoln County School District	\$834,557	\$38,446	\$14,291	\$174,601	(\$40,767)
72	Long Beach School District	\$881,286	\$0	\$0	\$176,257	\$0
73	Louisville Municipal School District	\$763,040	\$8,392	\$3,041	\$154,286	(\$8,898)
74	Lowndes County School District	\$1,536,623	\$1,178,073	\$0	\$542,939	(\$1,249,174)
75	Madison County School District	\$3,755,365	\$0	\$0	\$751,073	\$0
76	Marion County School District	\$568,434	\$234,781	\$53,515	\$160,643	(\$248,951)
77	Marshall County School District	\$810,908	\$131,273	\$0	\$188,436	(\$139,195)
78	McComb School District	\$673,857	\$189,547	\$0	\$172,681	(\$200,987)
79	Meridian Public School District	\$1,387,605	\$18,449	\$24,082	\$281,211	(\$19,562)
80	Midtown Public Charter School	\$72,657	\$933	\$0	\$14,718	(\$989)
81	Mississippi School of the Arts	\$31,057	\$24,293	\$6,446	\$11,070	(\$25,759)
82	Mississippi Schools for the Deaf and the Blind	\$36,471	\$44,146	\$0	\$16,123	(\$46,811)
83	Monroe County School District	\$628,838	\$132,294	\$11,311	\$152,226	(\$140,278)
84	Moss Point Separate School District	\$465,289	\$68,555	\$4,865	\$106,769	(\$72,693)
85	Natchez-Adams School District	\$867,894	\$165,235	\$0	\$206,626	(\$175,207)
86	Neshoba County School District	\$906,644	\$0	\$30,041	\$181,329	\$0
87	Nettleton School District	\$356,731	\$0	\$3,345	\$71,346	\$0
88	New Albany School District	\$607,184	\$182,019	\$0	\$157,841	(\$193,005)
89	Newton County School District	\$485,804	\$113,841	\$0	\$119,929	(\$120,711)
90	Newton Municipal School District	\$252,162	\$80,260	\$7,297	\$66,484	(\$85,104)
91	North Bolivar Consolidated School District	\$260,425	\$38,174	\$4,378	\$59,720	(\$40,478)
92	North Panola School District	\$394,342	\$0	\$0	\$78,868	\$0
93	North Pike School District	\$670,438	\$76,901	\$0	\$149,468	(\$81,543)
94	North Tippah School District	\$351,887	\$0	\$3,649	\$70,377	\$0
95	Noxubee County School District	\$406,024	\$299,250	\$98,516	\$141,055	(\$317,311)
96	Ocean Springs School District	\$1,704,446	\$0	\$0	\$340,889	\$0
97	Okolona Municipal School District	\$163,264	\$0	\$0	\$32,653	\$0
98	Oxford School District	\$1,242,291	\$0	\$0	\$248,458	\$0

99	Pascagoula Gautier School District	\$1,882,811	\$0	\$22,197	\$376,562	\$0
100	Pass Christian Public School District	\$573,847	\$13,175	\$9,122	\$117,404	(\$13,970)
101	Pearl Public School District	\$1,201,261	\$433,904	\$0	\$327,033	(\$460,092)
102	Pearl River County School District	\$932,288	\$126,035	\$0	\$211,664	(\$133,641)
103	Perry County School District	\$282,935	\$25,186	\$4,987	\$61,624	(\$26,706)
104	Petal School District	\$1,174,763	\$0	\$21,953	\$234,953	\$0
105	Philadelphia Public School District	\$247,034	\$162,352	\$0	\$81,877	(\$172,151)
106	Picayune School District	\$894,392	\$144,423	\$13,683	\$207,763	(\$153,139)
107	Pontotoc City School District	\$665,024	\$0	\$0	\$133,005	\$0
108	Pontotoc County School District	\$1,024,035	\$48,641	\$20,676	\$214,535	(\$51,577)
109	Poplarville School District	\$523,415	\$9,442	\$0	\$106,571	(\$10,012)
110	Prentiss County School District	\$653,627	\$195,416	\$0	\$169,809	(\$207,210)
111	Quitman County School District	\$265,839	\$186,856	\$67,502	\$90,539	(\$198,134)
112	Quitman School District	\$473,837	\$478	\$9,730	\$94,863	(\$507)
113	Rankin County School District	\$5,392,853	\$599,749	\$0	\$1,198,520	(\$635,946)
114	Reimagine Prep	\$161,555	\$0	\$0	\$32,311	\$0
115	Richton School District	\$184,064	\$46,874	\$0	\$46,188	(\$49,703)
116	Scott County School District	\$1,136,582	\$0	\$18,244	\$227,316	\$0
117	Senatobia Municipal School District	\$465,574	\$36,483	\$0	\$100,411	(\$38,684)
118	Simpson County School District	\$990,983	\$180,328	\$0	\$234,262	(\$191,211)
119	Smilow Collegiate	\$99,440	\$0	\$0	\$19,888	\$0
120	Smilow Prep	\$160,985	\$0	\$0	\$32,197	\$0
121	Smith County School District	\$740,816	\$150,470	\$0	\$178,257	(\$159,552)
122	South Delta School District	\$209,993	\$52,646	\$4,257	\$52,528	(\$55,823)
123	South Panola School District	\$1,198,697	\$0	\$0	\$239,739	\$0
124	South Pike School District	\$477,541	\$110,585	\$6,689	\$117,625	(\$117,259)
125	South Tippah School District	\$736,827	\$0	\$0	\$147,365	\$0
126	Starkville Oktibbeha Consolidated School District	\$1,402,136	\$198,419	\$30,406	\$320,111	(\$210,394)
127	Stone County School District	\$717,736	\$141,272	\$3,041	\$171,802	(\$149,799)
128	Sunflower County Consolidated School District	\$948,529	\$479,069	\$0	\$285,520	(\$507,983)
129	Tate County School District	\$642,800	\$0	\$0	\$128,560	\$0
130	Tishomingo County School District	\$843,105	\$56,493	\$0	\$179,920	(\$59,903)
131	Tunica County School District	\$503,185	\$129,802	\$0	\$126,597	(\$137,636)
132	Tupelo Public School District	\$1,898,767	\$157,891	\$0	\$411,332	(\$167,420)

133	Union County School District	\$814,897	\$47,112	\$1,520	\$172,402	(\$49,956)
134	Union Public School District	\$274,672	\$5,675	\$3,649	\$56,069	(\$6,017)
135	Vicksburg Warren School District	\$2,042,372	\$454,116	\$0	\$499,298	(\$481,524)
136	Walthall County School District	\$511,163	\$19,657	\$1,824	\$106,164	(\$20,844)
137	Water Valley School District	\$286,924	\$46,335	\$0	\$66,652	(\$49,131)
138	Wayne County School District	\$892,113	\$0	\$0	\$178,423	\$0
139	Webster County School District	\$498,626	\$0	\$0	\$99,725	\$0
140	West Bolivar Consolidated School District	\$318,266	\$42,132	\$5,169	\$72,080	(\$44,675)
141	West Jasper Consolidated School District	\$397,761	\$90,969	\$7,906	\$97,746	(\$96,459)
142	West Point Consolidated School District	\$809,484	\$196,393	\$12,467	\$201,175	(\$363,119)
143	West Tallahatchie School District	\$184,349	\$56,014	\$4,561	\$48,073	(\$59,395)
144	Western Line School District	\$525,979	\$141,714	\$12,162	\$133,539	(\$150,267)
145	Wilkinson County School District	\$298,321	\$72,990	\$4,865	\$74,262	(\$77,395)
146	Winona Montgomery Consolidated School District	\$346,759	\$69,116	\$2,372	\$83,175	(\$73,288)
147	Yazoo City Municipal School District	\$657,616	\$151,372	\$10,460	\$161,798	(\$160,508)
148	Yazoo County School District	\$413,432	\$41,279	\$0	\$90,942	(\$43,771)
	TOTALS	\$129,557,251	\$20,142,749	\$4,000,000	\$29,940,000	(\$21,513,315)

SUBTOTAL	\$205,153,315
Positive Variance	\$8,071,585
TOTAL	\$197,081,730