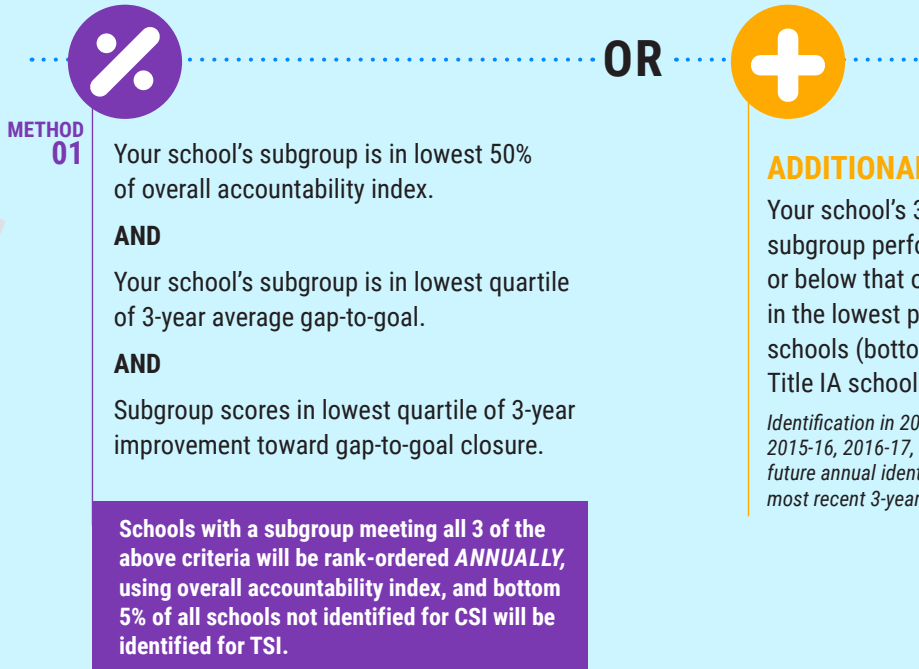


Why was my school identified for Targeted Support and Improvement?



How can my school exit Targeted Support and Improvement?

If your school was identified as **TSI**



Your school no longer meets criteria that led to identification

AND

Your school's 3-year average growth in subgroup proficiency exceeds target proficiency growth rate projected for the same statewide subgroup

NOTE: Target rates are identified in Appendix A of the Mississippi Succeeds State Plan

EXIT



If your school was identified as **ADDITIONAL TSI**



Your school's 3-year average subgroup performance is above all students in the lowest performing schools (bottom 5% of Title IA schools)*

**Based on identification year data.*

AND

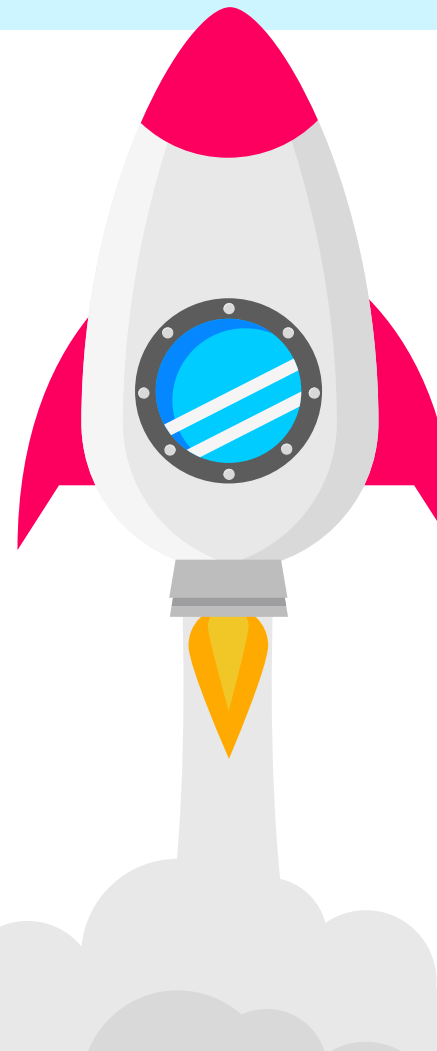
Your school has an increase in the subgroup accountability letter grade

OR

an increase in the subgroup accountability letter grade that crosses over the midpoint of the letter grade.

(For example, bottom half of "F" to top half of "F")

EXIT



What supports will my school receive from Targeted Support and Improvement?

Supports

- ▶ evidence-based interventions as outlined in TSI plan approved by the local school board and implemented by the school district
- ▶ if funding is available once CSI schools are served, TSI schools will have access to formula or competitive grants
- ▶ training on utilizing data to build capacity and improve instruction

