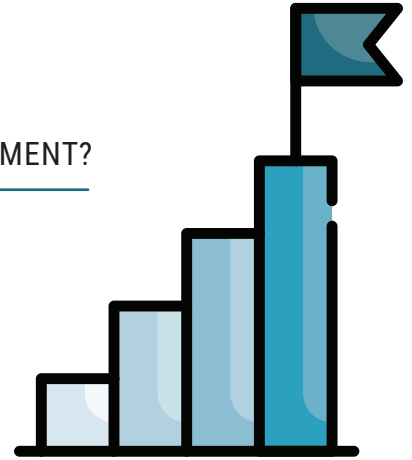


# ATSI [ ADDITIONAL TARGETED SUPPORT & IMPROVEMENT ]

## WHY was my school identified for ADDITIONAL TARGETED SUPPORT AND IMPROVEMENT?

Your school's 3-year average subgroup performance is at or below that of all students in the lowest performing schools (bottom 5% of Title IA schools).

*Identification in 2023-24 based on 2018-19, 2021-22, and 2022-23 data.*



## HOW can my school exit ADDITIONAL TARGETED SUPPORT AND IMPROVEMENT?

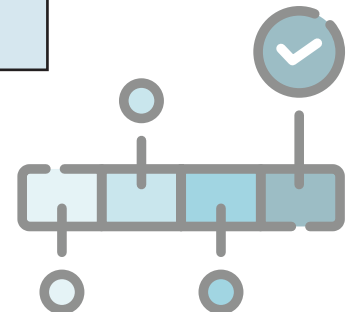
Your school's 3-year average subgroup performance is above all students in the lowest performing schools (bottom 5% of Title IA schools).

+ AND

Your school has an increase in the subgroup accountability letter grade  
**OR**  
an increase in the subgroup accountability letter grade that crosses over the midpoint of the letter grade.

*(For example, bottom half of "F" to top half of "F")*

EXIT



## WHAT will my school receive from ADDITIONAL TARGETED SUPPORT AND IMPROVEMENT?



If funding is available once CSI schools are served, TSI schools will have access to grant funding and professional learning.