



Spring 2020

Professional Development Catalog
Online



MISSISSIPPI
DEPARTMENT OF
EDUCATION

Ensuring a bright future for every child

Spring Online Sessions

Feb 3 - Mar 31



Power of a Positive Classroom

Grades K-12

This session is designed to provide teachers with tools needed to effectively manage their classroom. Teachers will also review relevant research on understanding and connecting with their students and will develop a plan of action to put into place in their own classroom.

Cross-Curricular 1 CEU



If These Walls Could Talk

Grades K-12

This online course focuses on the use of anchor charts and word walls within the classroom. Primary topics will include how to scaffold student learning by using the three types of anchor charts as well as how to improve vocabulary development through the usage of word walls. Practical strategies for implementing these practices in the classroom will also be examined.

Cross-Curricular 1 CEU

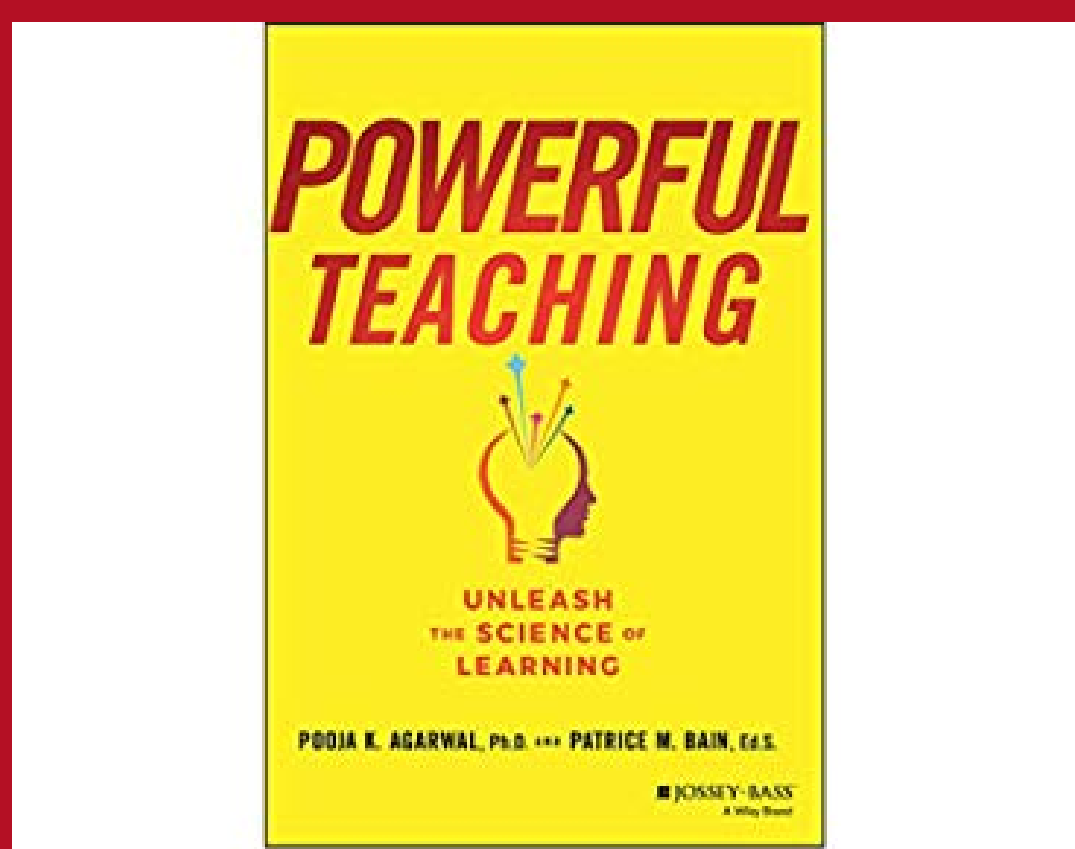


Access for All

Grades K-12

The Access for All (AFA) Guide was developed to help teachers address issues that impact learners with a wide variety of needs. Participants will learn how to pinpoint students' needs and use the guidance document to find practical strategies for all types of learners.

Cross-Curricular 1 CEU



Powerful Teaching: A Book Study

Grades K-12

This book study provides guidance on how to help students actually remember what you taught them! The primary focus is on four essential strategies to transform teaching: retrieval practice, interleaving, spacing, and feedback-driven metacognition, with each of these strategies being heavily grounded in cognitive research. Educators will be able to easily apply information found within to any and all subjects and grade levels.

Required Materials:
Agarwal, P. K., & Bain, P. M. (2019). Powerful teaching: unleash the science of learning. San Francisco: Jossey-Bass.

Cross-Curricular 2 CEUs

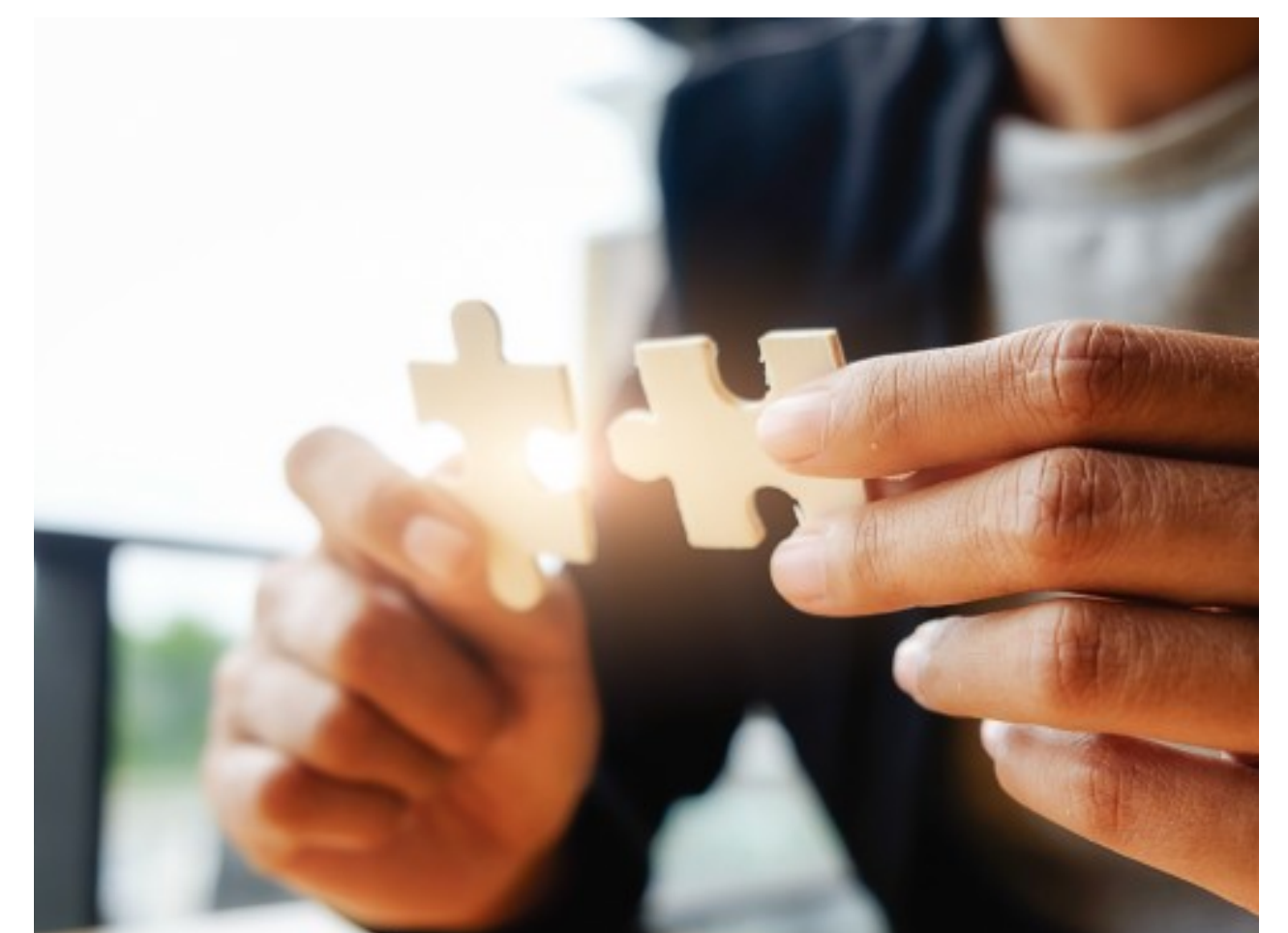


Escape the Classroom

Grades 3-12

This online course focuses on the use of escape rooms within the classroom to promote active engagement and problem solving. Primary topics will include how to develop an escape room that is aligned to course content as well as how to improve collaboration between students through effective facilitation.

Cross-Curricular 1.5 CEUs



Cross-Curricular Inclusive Practices

Grades K-12

This course is designed to enhance co-teaching and create inclusive environments to support all learners. Primary topics include effective communication of instructional decisions, implementation of practical instructional strategies, and exploring techniques to support inclusive environments.

Cross-Curricular 1 CEU

Registration for Spring begins on January 6 at www.gsmu.mdek12.org.

Spring Online Sessions

Feb 3 - Mar 31



Determining the Needs for Students with Visual Impairments

Grades K-12

Participants will understand how to identify the needs, types of placements available, accommodations for instruction and testing, and develop an appropriate plan that aligns with the type of vision loss of the student. This training will provide insight into what visual impairment/blindness truly means and how to adapt teaching styles to better serve this unique population of students.

Cross-Curricular 2 CEUs



Differentiation in the ELA Classroom

Grades 6-12

This course highlights the importance of differentiated instruction in the ELA classroom by providing teachers with ways to differentiate their instruction through the four areas of content, process, product, and learning environment. Teachers will analyze their role in a differentiated classroom and gain valuable strategies to implement in their own classroom.

ELA 1 CEU



Breaking Down Barriers and Bias Through Book Choice

Grades K-12

During this online course, educators will carefully analyze their own implicit biases and explore how text selection can foster critical literacy and break down barriers in the elementary classroom in order to develop a true community of learners and citizens.

ELA 1 CEU



Using Math Tools to Maximize Instruction

Grades K-5

Fun, hands-on tools and manipulatives will be examined in this course to assist teachers in developing the conceptual understanding necessary to teach key standards in the MS-CCRS for Mathematics.

Note: CEUs determined by the number of manipulatives explored.

Mathematics Up to 2.5 CEUs



A Closer Look at the Science and Engineering Practices

Grades K-12

The Science and Engineering Practices (SEPs) are a dimension of the MS-CCRS for Science designed to engage students in actively doing science and thinking like a scientist or an engineer. This session will help educators become more familiar with the eight (8) practices and consider what they look like in the classroom.

Science 1.5 CEUs



Writing in the Science and Social Studies Classroom

Grades 6-12

Writing should be an essential part of the science and social studies classroom. This session will support science and social studies teachers by providing ideas and strategies for writing specific to the content areas.

Science & Social Studies 1 CEU

Registration for Spring begins on January 6 at www.gsmu.mdek12.org.

Spring Online Sessions Feb 3 - Mar 31



The PLAAFP

Grades K-12

In this course, participants will study an important component of the IEP - the Present Levels of Academic Achievement and Functional Performance (PLAAFP). Participants will learn how to develop a comprehensive PLAAFP not only compliant with the law, but one that communicates very clearly the student's strengths and needs, helping educators and parents to design and implement an appropriate educational program.

Special Education 1 CEU



High Leverage Practices in Special Education

Grades K-12

This online course in a book study format focuses on the twenty-two (22) practices in special education developed by the Council for Exceptional Children (CEC) and the Collaboration for Effective Educator Development, Accountability and Reform (CEEDAR) Center from research regarding "what works" in improving student achievement for students with disabilities under IDEA when implemented with fidelity.

Special Education 2 CEUs/20 SEMIs