

# Literacy SUMMIT



## Wi-Fi Access



# JCC Guest

No password required

## Access Today's Materials



### Presentation Resources:

<https://www.mdek12.org/LitSummit2019>



3

3

## Parent Resources

### PARENT RESOURCES

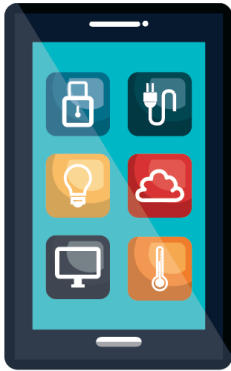
- Parents, stop by for a free parent resource pack!
- Demos held **7:40-7:55am** and **8:00-8:15am**



4

4

## Registration/Attendance



Each morning, use your phone to scan the QR code on your name tag and enter your information.

**This MUST be done to mark your attendance.**



5

5

## Evaluations



At each breakout session:

- Scan the QR code
- Enter the name of the session
- Complete the evaluation



6

6

## CEUs/SEMIs/Contact Hours



Complete the form in your folder and turn in to NMEC at the registration desk at the end of the conference.



7

7

## Visit Our Support Tables

# nwea

Northwest Evaluation Association



8

8



## Visit Our Support Tables



**newsela**



9

9

## Visit Our Support Tables

**Curriculum Associates®**



10

10

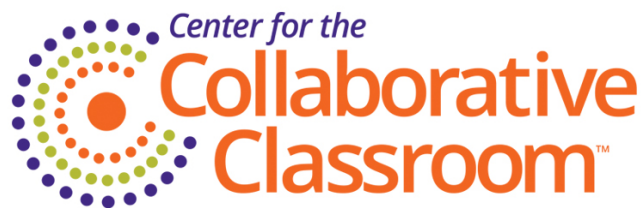
## Visit Our Support Tables



11

11

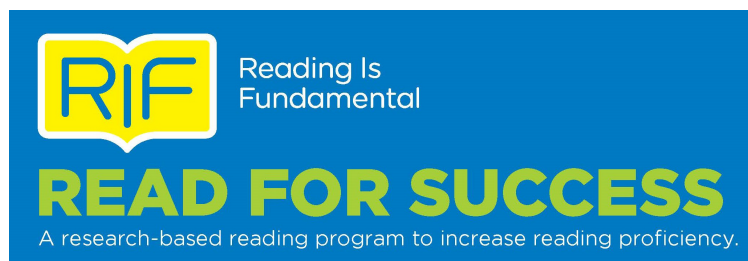
## Visit Our Non-Profit Tables



12

12

## Visit Our Non-Profit Tables



13

13

## Visit Our Non-Profit Tables

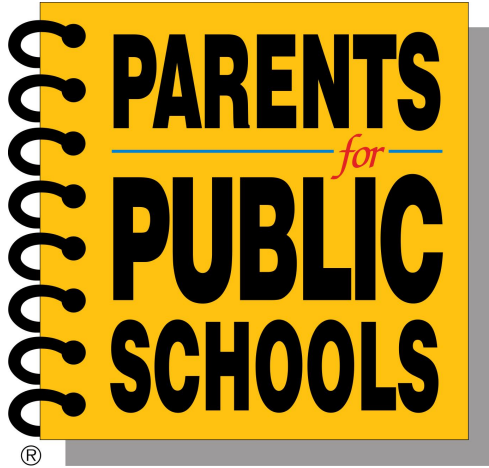
**Families First**  
**Great Minds**  
**Hinds Behavioral**  
**Health Services**



14

14

## Visit Our Non-Profit Tables



15

15

## Visit Our Non-Profit Tables

**Mississippi Children's Museum**  
**Mississippi Attorney General's**  
**Office**  
**Parents for Public Schools**



16

16

## Visit Our Non-Profit Tables



17

17

## Visit Our Non-Profit Tables

**The University of Southern  
Mississippi: Mississippi Early  
Childhood Inclusion Center**

**The University of Southern  
Mississippi: Wellness Programs**



18

18

## Visit Our MDE Tables



- Office of Early Childhood
- Office of Federal Programs
- Office of Intervention Services
- Office of Literacy
- Office of Professional Development
- Office of School Improvement
- Office of Special Education
- Office of Teaching and Leading



19

19

## Welcome

**Dr. Carey Wright**  
STATE SUPERINTENDENT  
*Mississippi Department of  
Education*



20

20

## Greetings

### Senator Gray Tollison

CHAIRMAN OF THE SENATE  
EDUCATION COMMITTEE

*Mississippi State Senate*



21

21

## Keynote Speaker

### Luis Versalles

DIRECTOR OF PRE K-12  
DISTRICT PARTNERSHIPS

*Courageous Conversation  
and Pacific Educational Group*



22

22

## Lunch



11:30am – 1:00pm

## PANEL DISCUSSION

Improving Literacy Outcomes:  
Challenges and Solutions



23

23

## Lunch

## PANEL MEMBERS



**Dr. Linda  
Cavazos**



**Hannah  
Gadd**



**James D.  
Johnson**



**Dr. Lee  
Pambianchi**



**Dr. Toy L.  
Watts**



24

24



## Share



Take pictures at our photo wall  
and share what you are learning!



**#msliteracysummit2019**

**#sharedcommitmenttoliteracy**



**#improvingoutcomesforall**



25