

Mississippi Seal of Biliteracy

A Community Effort

Literacy Summit

August 2019



MISSISSIPPI
DEPARTMENT OF
EDUCATION

Ensuring a bright future for every child

Sandra C. Elliott, Mississippi Department of Education
Hector Barbereno, Pascagoula-Gautier School District
Edgar Serrano, The University of Mississippi

Mississippi Department of Education

VISION

To create a world-class educational system that gives students the knowledge and skills to be successful in college and the workforce, and to flourish as parents and citizens

MISSION

To provide leadership through the development of policy and accountability systems so that all students are prepared to compete in the global community



MISSISSIPPI
DEPARTMENT OF
EDUCATION

Ensuring a bright future for every child

State Board of Education Goals FIVE-YEAR STRATEGIC PLAN FOR 2016-2020



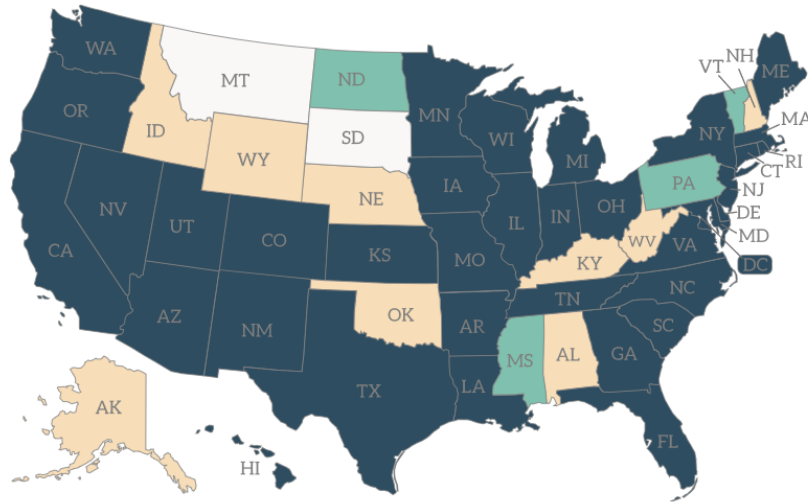
Mississippi Seal of Biliteracy Policy

The purpose of this policy is to establish minimum criteria for Local Education Agencies (LEAs) in awarding Seals of Biliteracy.

- The Seal of Biliteracy recognizes and awards students who have attained proficiency in one or more world languages and English by high school graduation.
- The Seal of Biliteracy demonstrates attainment of biliteracy for students, employers, and postsecondary institutions. It also signals a student's readiness for college and career and for engagement as a global citizen.
- Participation in the Mississippi Department of Education's (MDE) Seal of Biliteracy shall be determined by LEAs.
- Beginning school year 2019-2020 the MDE shall require participating school districts to follow the award process as defined in the Mississippi Seal of Biliteracy Guidance Document. LEAs are also required to report Seal of Biliteracy award data to the MDE.

State Laws Regarding the Seal of Biliteracy

● Approved State Seal ● Under Consideration ● Early Stages ● No Seal of Biliteracy, Yet!



5

Our Team

Hector De Jesus Barberena, Co-Chair *Pascagoula-Gautier School District*

Edgar Serrano, Co-Chair *University of Mississippi*

Dana Bullard, Ph.D. *Aberdeen School District*

LeighAnne Cheeseman *Mississippi Department of Education*

Melissa DeAngelo *Pascagoula-Gautier School District*

Stephanie Green *DeSoto County Schools*

Cheryl Kaler *Mississippi School for the Deaf*

Laura Moore *Petal School District*

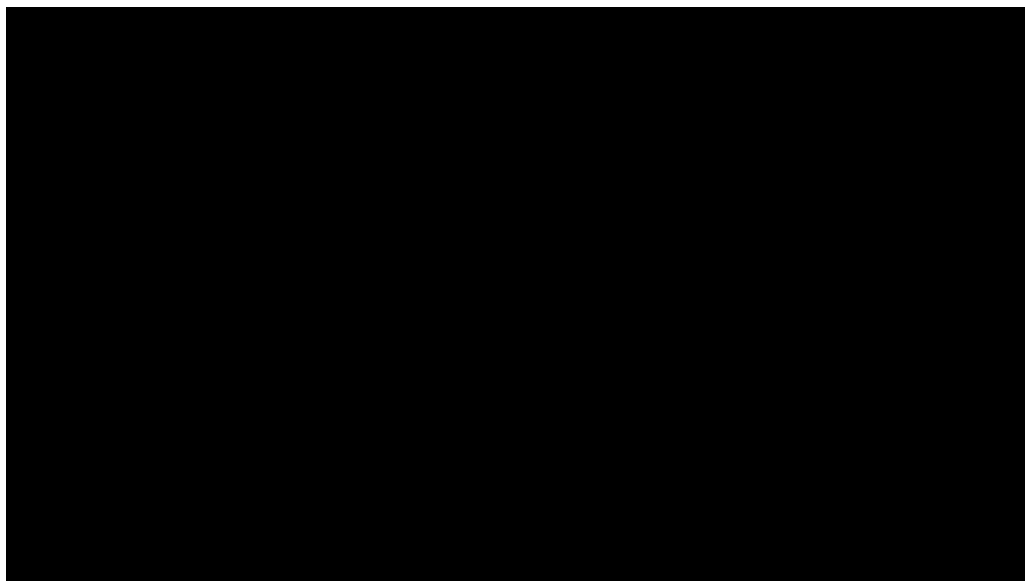
Susan Rushing *Mississippi School for the Deaf*

Lucy Solano *Petal School District*



6

Language is the Key to Our World



Let's Lead our State





What is the Seal of Biliteracy?

An award given by a school, school district, or county office of education in recognition of students who have studied and attained proficiency in two or more languages by high school graduation

- Appears on the transcript of the graduating senior
- Serves as a statement of accomplishment for college admissions or for future employers

What is Language Proficiency?

The ability to function in a language at a high degree of competence

- The Seal of Biliteracy will enable districts to utilize multiple assessments to measure the degree of proficiency
- The Seal will be awarded in one of two levels: silver or gold



11

Purpose of the Seal of Biliteracy

- recognize the value of language learning
- give students a clear goal that can encourage them to attain high proficiency levels in one or more languages, in addition to English
- affirm native or heritage languages
- provide employers with a method of identifying individuals with language and biliteracy skills
- prepare students with the critical skills necessary to function in a global society
- strengthen cross-cultural communication, affirm the value of diversity, and honor the multiple cultures & languages in our communities



12

Qualifying Students

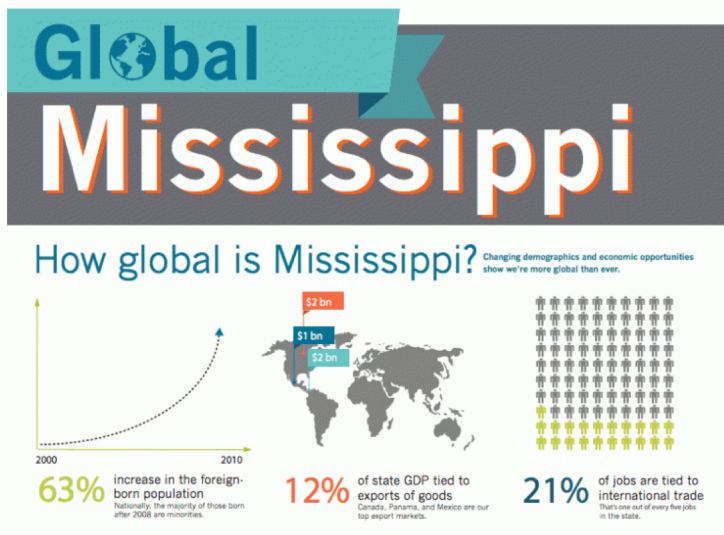
High school students who

- Meet the qualifying scores in English and
- Meet the qualifying scores in a world language
- Provide acceptable original score reports for assessed languages



13

Mississippi Exports



Canada (French)
Mexico (Spanish)
Panama (Spanish)

12%

MS-GDP



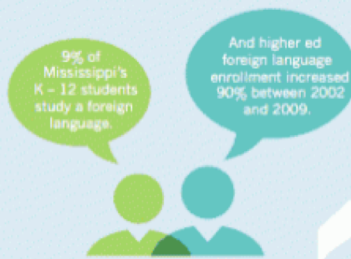
<https://asiasociety.org/mapping-nation>

14

Mississippi Exports

How are we preparing students?

Schools can not yet meet community needs and workforce demands.



Twenty-one of the top 25 industrialized countries begin language instruction in elementary school.



Vast majority of Mississippi students do not take part in study abroad programs.

“We should encourage young people and provide the tools needed for them to experience other cultures, economies and new technologies. Harnessing these new skills and adapting to what the market demands will ultimately bring more and better jobs to our region.”

— Haley Barbour
Former Governor of Mississippi



<https://asiasociety.org/mapping-nation>

15

Foreign Investment in Mississippi

Foreign Direct Investment Strengthens **MISSISSIPPI'S ECONOMY**

**37,900
JOBS**

QUALITY JOBS



37,900 workers in Mississippi are employed as a result of international investment.

MANUFACTURING



15,100 workers in Mississippi - **40 percent** of all FDI jobs in the state - are in the **manufacturing sector**.

GLOBALLY CONNECTED



Among all international employers, those from **Japan**, the **United Kingdom** and **Germany** support the largest number of jobs in Mississippi.

MANY EMPLOYERS



More than **415 international employers** have operations in Mississippi.



16

Foreign Investment in Mississippi



Foreign Investment in Mississippi

Top 10 Export Countries		Top 10 Import Countries	
Country	Export USD\$	Country	Import USD\$
Canada	\$2,248,322,792	China	\$3,884,629,512
Panama	\$985,334,413	Mexico	\$1,607,702,291
Mexico	\$961,620,747	Venezuela	\$1,392,461,550
China	\$787,119,853	Canada	\$900,237,343
Belgium	\$468,101,140	Japan	\$810,994,758
Guatemala	\$434,564,899	Germany	\$740,474,330
Honduras	\$393,189,950	Brazil	\$481,455,123
Netherlands	\$365,212,583	Vietnam	\$366,126,714
Brazil	\$303,500,137	Malaysia	\$337,884,793
Afghanistan	\$258,988,550	Taiwan	\$324,427,457

Foreign Investment in Mississippi



International Companies in Mississippi

- ABB Inc. Air Liquide USA
- Airbus Group, Inc.
- Akzo Nobel Inc. Aptiv
- AstraZeneca Pharmaceuticals
- BAE Systems Balfour Beatty
- Bimbo Bakeries
- bioMérieux
- Boehringer Ingelheim Corp.
- BP Brookfield Asset
- Management BT Bunge Ltd
- Bunzl USA, Inc.
- CEMEX USA CN
- CRH Americas, Inc.
- Deutsche Telekom
- G4S
- GlaxoSmithKline
- Grifols
- Imerys
- Ipsen Biopharmaceutical, Inc.
- John Hancock Life Insurance Co. Johnson Controls Kerry
- MAHLE Industries
- Nestlé USA, Inc.
- Nissan
- Randstad North America
- Rolls-Royce North America Inc.
- SABIC Safran USA
- Schindler
- Elevator Corporation
- Schneider Electric USA
- Shell Oil Company
- Siemens Corporation
- Smiths Group
- Sony Corporation of America
- The Tata Group Toyota Motor North America
- UBS Voith Holding, Inc.
- White Mountains, Inc.
- Zurich Insurance Group

The Need for Language Services

- Private sector
- Federal, state and local governments
- US military and intelligence communities
- Healthcare providers
- Law enforcement/justice system
- Schools and universities

Keep our Nation Safe

The largest employer for language professionals in the United States is the U.S. Department of Defense.

\$517,200,000




In High Demand

Jobs are projected to grow 18 percent from 2016 to 2026, much faster than the average for all occupations.

Source: US Bureau of Labor Statistics Employment Projections

Features of the Mississippi Guidelines

How It Helps Teachers

- Increases motivation of students and teachers working to achieve clear goals
- Increases language course offerings
- Creates more interest in early language teaching K-12
- Encourages rigor in language learning



23

Who Awards the Seal?

Awarded by the local board of education

- Local policy is implemented by districts that opt to adopt a seal of biliteracy program
- Local policy should reflect adherence to the Mississippi Seal of Biliteracy Guidelines

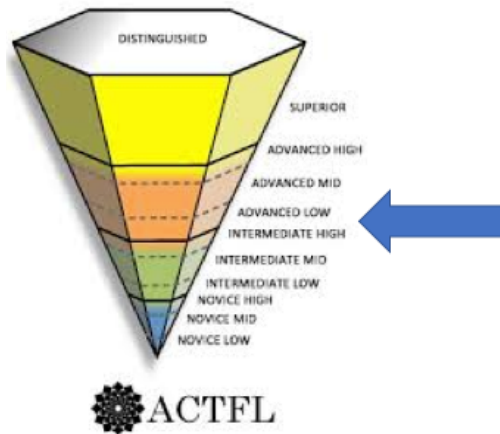


24

Mississippi Seal Basics

Two seal levels available

- Gold Seal of Biliteracy – Advance-Low
- Silver Seal of Biliteracy – Intermediate-mid



Features of the Mississippi Guidelines

- Clear step by step guidelines for district implementation
- Clear definitions of terms

- 1 Student notified in the 7th or 8th grade.
- 2 Student and counselor meet regularly to track progress towards biliteracy.
- 3 Student meets English requirement.
Student meets world language requirement.
- 4 Student completes application and submits to designated school personnel.
- 5 Counselor verifies evidence submitted by the student and approves seal application.
- 6 Seal indicated on high school transcript.
- 7 School submits seal reporting form to MDE.

Features of the Mississippi Guidelines

- Clear list of acceptable minimum score requirements
- Clear list of acceptable assessments for demonstrating proficiency in both English and world languages
- Multiple assessment options for demonstrating proficiency



27

Silver Seal of Biliteracy

MISSISSIPPI SILVER SEAL OF BILITERACY

ACCEPTABLE EVIDENCE OF PROFICIENCY - PDF of official score report (original file or scanned copy). Evidence of both English and world language categories shall be completed within grades 9-12, submitted in a clearly legible format, and show the applicant's name.

Note: Some exams do not provide results until after June. Students and advisors may need to plan accordingly.

ENGLISH

Language	Assessment Name and link	Minimum Score Requirements
English	Scholastic Achievement Test (SAT) https://collegereadiness.collegeboard.org/sat	320-330
	American College Testing (ACT) http://www.act.org/content/act/en/products-and-services/the-act.html	18-19 on the English section
	AP https://apstudent.collegeboard.org/takingtheexam/ap-calendar	3 in English Literature or 3 in Language Composition
	MDE English II Test https://www.mdek12.org/OSA/MAAP	4 *only the two highest levels
	MDE ELPT *This assessment is only acceptable for English learner students who are assessed at the high school level. https://www.mdek12.org/OSA/SP/ELPT	4 (proficient) or 5 (above proficient) in all tested domains



28

WORLD LANGUAGES

Language	Assessment Name and link	Minimum Score Requirements
French, German, Italian, Spanish *See full list of available languages	AP Language and Culture https://apcentral.collegeboard.org/courses/ap-spanish-language-and-culture/exam	3 Intermediate Mid
French, German, Italian, Spanish, Arabic, Mandarin, Hindi, Japanese, Portuguese, Russian, Thai *See full list of available exams	AAPPL ACTFL Proficiency https://www.actfl.org/assessment-professional-development/assessments-the-actfl-testing-office/aappl	I 4 Intermediate Mid *All four components required
French, German, Italian, Spanish, Arabic, Mandarin, Hebrew, Hindi, Korean, Polish, Russian *See full list of available languages	STAMP (Avant) 4S https://www.globalscaleofbiliteracy.net/avant-stamp-test-state-seal-of-biliteracy-resources	L4 Intermediate Mid *All 4 components required
Amharic, Somali (Maay Maay and Maxaa), Urdu *See full list of available languages	Avant WorldSpeak https://www.globalscaleofbiliteracy.net/avant-worldspeak-test-state-seal-of-biliteracy-resources	Intermediate Mid
French Spanish	International Baccalaureate (Higher Level)	4
Latin	Language testing International ALIRA (Latin)	Intermediate Mid *All four skills NOT required

Gold Seal of Biliteracy

MISSISSIPPI GOLD SEAL OF BILITERACY

ACCEPTABLE EVIDENCE OF PROFICIENCY - PDF of official score report (original file or scanned copy). Evidence of both English and world language categories shall be completed within grades 9-12, submitted in a clearly legible format, and show the applicant's name.

Note: Some exams do not provide results until after June. Students and advisors may need to plan accordingly.

ENGLISH

Language	Assessment Name and link	Minimum Score Requirements
English	Scholastic Achievement Test (SAT) https://collegereadiness.collegeboard.org/sat	340 or higher
	American College Testing (ACT) http://www.act.org/content/act/en/products-and-services/the-act.html	20 or higher on the English section
	AP https://apstudent.collegeboard.org/takingtheexam/ap-calendar	4 in English Literature or 4 in Language Composition
	MDE English II Test https://www.mdek12.org/OSA/MAAP	5
	MDE ELPT *This assessment is only acceptable for English learner students who are assessed at the high school level. https://www.mdek12.org/OSA/SP/ELPT	5 in all tested domains

WORLD LANGUAGES

Language	Assessment Name and link	Minimum Score Requirements
French, German, Italian, Spanish *See full list of available languages	AP Language and Culture https://apcentral.collegeboard.org/courses/ap-spanish-language-and-culture/exam	4 or 5 Intermediate High
French, German, Italian, Spanish, Arabic, Mandarin, Hindi, Japanese, Portuguese, Russian, Thai *See full list of available exams	AAPPL ACTFL Proficiency https://www.actfl.org/assessment-professional-development/assessments-the-actfl-testing-office/aappl	15 - Advanced (Intermediate High or Advanced)
French, German, Italian, Spanish, Arabic, Mandarin, Hebrew, Hindi, Korean, Polish, Russian *See full list of available languages	STAMP (Avant) 4S https://www.globalsealofbiliteracy.net/avant-stamp-test-state-seal-of-biliteracy-resources	15 Intermediate High or Advanced Low
Amharic, Somali (Maay, Maay and Maxaa), Urdu *See full list of available languages	Avant WorldSpeak https://www.globalsealofbiliteracy.net/avant-worldspeak-test-state-seal-of-biliteracy-resources	Advanced Low



29

Student Scenarios

- Examples of student scenarios to help determine level of seal to be awarded



STUDENT A met the Gold Seal Biliteracy in English and the Silver Seal of Biliteracy in a world language, therefore the student is awarded the Silver Seal of Biliteracy.

ENGLISH		WORLD LANGUAGE	
Assessment	English II	Assessment	AP French (L&C)
Assessment Score	5	Assessment Score	3
Seal of Biliteracy	Gold	Seal of Biliteracy	Silver
SEAL AWARDED		Silver Seal of Biliteracy	



30

Portfolio-Based Alternative Evidence Method

- For students who may have a disability that prevents them from taking a computer based assessment
- For students who have learned a language for which there is not a computer-based assessment available

Alternative Portfolio Assessments SEAL OF BILITERACY					
Required scores for earning a Seal of Biliteracy:					
3.0 - 3.4 <u>Silver</u> Seal of Biliteracy					
3.5 - 4.0 <u>Gold</u> Seal of Biliteracy					
Rubric Scoring Guidelines:					
1 – student is unable to complete task					
2 – student completes task with many errors that make understanding difficult					
3 – student completes task with some errors that do not interfere with understanding					
4 – student completes task with few or no errors; understanding is clear at all times					
DOMAIN: Speaking/Expressive (Interpersonal Speaking)					
Rate the following areas of evidence on a scale of 1 (lowest) to 4 (highest).					
A. The student can participate with ease in conversations on familiar topics.	1	2	3	4	Evaluator's Notes
B. The student can usually talk about events and experiences at various points in their lives.	1	2	3	4	Evaluator's Notes



31

Student Notification Letter

Incoming Student Notification of Seal of Biliteracy			
Student Name _____			
School _____		Expected Year of Graduation _____	
Parent/Guardian Name _____			
We have been notified of the Mississippi Seal of Biliteracy and the requirements for earning this credential.			
<input type="checkbox"/> My child would like to pursue coursework and/or other requirements to work towards attaining this seal upon graduation.			
Language of Interest _____			
Student Signature _____		Parent/Guardian Signature _____	
Date _____		Date _____	



32

Student Application

STUDENT APPLICATION SEAL OF BILITERACY			
Directions to Applicants: 1. Please type or print legibly all information. 2. Complete all sections of the application. 3. Submit application and documentation of qualifying scores to your school counselor at your high school no later than April 1 st .			
Name _____		Date _____	
Current Grade Level _____		Expected Year of Graduation _____	
Counselor Name _____			
Recommending Teacher Name _____			
ASSESSMENT INFORMATION			
Assessment information used to document proficiency in English and at least one other language.			
Language	Name of Assessment	Date Completed	Score*
English			
Other Language:			
Other Language:			
*Attach a copy of the score report. Some exams do not give results until after June. Students and advisors may need to plan accordingly.			

FOR GUIDANCE COUNSELOR USE ONLY	
Qualifications checklist for a Seal of Biliteracy: <input type="checkbox"/> Passed all required end-of-course English/Reading assessments at the proficient or higher level. <input type="checkbox"/> Completed all graduation requirements for a standard or advanced studies diploma. <input type="checkbox"/> Acceptable evidence of proficiency at the Intermediate-Mid or higher level in at least one language in addition to English.	
Seal of Biliteracy Awarded <input type="checkbox"/> Silver Seal of Biliteracy <input type="checkbox"/> Gold Seal of Biliteracy	<input type="checkbox"/> No Seal Awarded Reason: _____
Counselor Signature _____	Date _____
Recommending Teacher Signature _____	Date _____



33

District Participation Form

Mississippi Seal of Biliteracy DISTRICT PARTICIPATION FORM	
<i>This form shall be completed and submitted upon initial determination to participate in the Mississippi Seal of Biliteracy program.</i>	
District Name _____	
District Address _____	
County _____	
District Seal of Biliteracy Contact Name _____	
District Seal of Biliteracy Contact Email _____	
Our district agrees to abide by the Mississippi Department of Education's Seal of Biliteracy Policy 28.8 and guidance as outlined in the Mississippi Seal of Biliteracy Guidelines. We also agree to submit required information as listed on the Mississippi Seal of Biliteracy Reporting Form.	
Superintendent Signature _____	Date _____



34

Pascagoula Gautier

Congratulations PHS Seniors!

Joshua Paulino
Gabreila Mota
Camila Susanna-Cuello
Ejasli Torres
Amanda Zepeda



Mississippi's first Biliteracy Seal recipients. 



35

District Reporting

Mississippi Seal of Biliteracy REPORTING FORM

This form shall be completed annually. It shall be submitted no later than September 1st of the following school year.

District Name _____

District Address _____

County _____

District Seal of Biliteracy Contact Name _____

District Seal of Biliteracy Contact Email _____

REPORTING FOR SCHOOL YEAR _____ - _____

Number of students enrolled in world language courses this school year:

Number of students awarded the Silver Seal of Biliteracy this school year:

Number of students awarded the Gold Seal of Biliteracy this school year:

Of the students awarded a Seal of Biliteracy this year, how many were designated as EL at some point in their K-12 education?



36

Public Comments

- When submitting comments, please indicate if the comment is for the policy or the guidelines. For comments on the guidelines document, please note the page number. The approved policy and guidelines will be implemented during the 2019-2020 school year.
- Please submit written comments to **Limeul Eubanks**, Office of Secondary Education, via email at el-worldlanguages@mdek12.org or regular mail to 359 North West Street, Jackson, MS 39201, on or before **5:00 p.m., on September 15, 2019**.



37

Seal of Biliteracy Contacts

University of Mississippi

Edgar Serrano
Instructor of Spanish
Immediate Past President –MFLA
NNELL State of Mississippi
Representative
eserrano@olemiss.edu

MS Department of Education

Sandra Elliott
English Learner Intervention Support
Specialist
(Pre K – 12)
selliott@mdek12.org



Pascagoula School District

Hector De Jesus Barberena NBCT
Spanish Teacher
Regional Workshop Director MSFLA
MFLA Teacher of the Year
hector.baberena@yahoo.com

MS Department of Education

Limeul Eubanks
Pre-K -12 Dance, Media Arts, Music,
Theatre, visual Arts and World
Languages
leubanks@mdek12.org

38



Sandra Elliott

English Learner Intervention Support Specialist

selliott@mdek12.org

601-359-2586