

School Attendance Officer's Role in Reducing Chronic Absenteeism

Chronic Absenteeism Summit 2018

August 22, 2018



**Toni Kersh, Bureau Director
Compulsory School Attendance Enforcement**

**Allison Crain, School Attendance Officer
Lafayette County**

VISION

To create a world-class educational system that gives students the knowledge and skills to be successful in college and the workforce, and to flourish as parents and citizens

MISSION

To provide leadership through the development of policy and accountability systems so that all students are prepared to compete in the global community

MISSISSIPPI STATE BOARD OF EDUCATION
STRATEGIC PLAN GOALS

1

All Students Proficient and Showing Growth in All Assessed Areas



2

Every Student Graduates from High School and is Ready for College and Career



3

Every Child Has Access to a High-Quality Early Childhood Program



4

Every School Has Effective Teachers and Leaders



5

Every Community Effectively Uses a World-Class Data System to Improve Student Outcomes

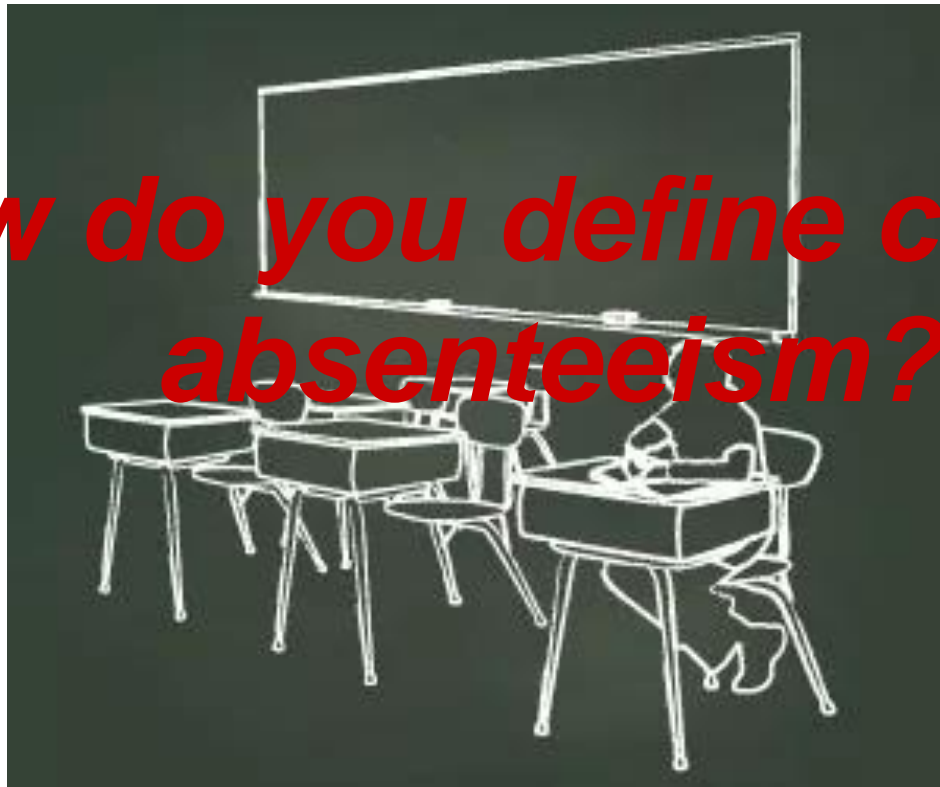


6

Every School and District is Rated “C” or Higher

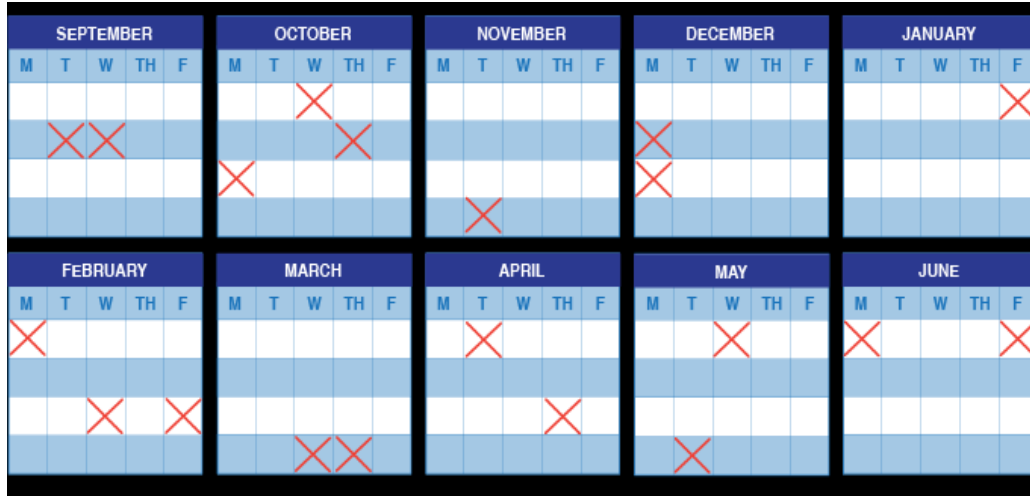


How do you define chronic absenteeism?



Chronic Absenteeism Defined

Chronic absenteeism is typically defined as missing 10 percent or more of a school year - approximately 18 days a year, or just two days every month

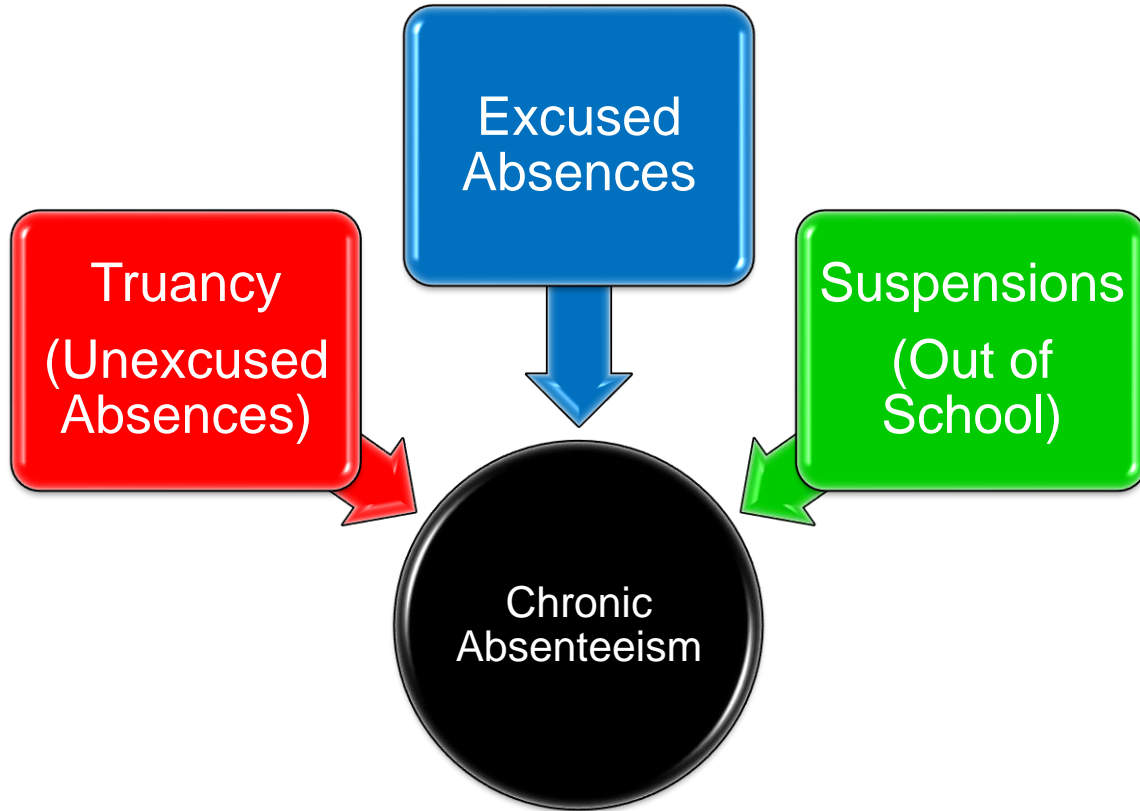


Average Daily Attendance

The percent of enrolled students who attend school each day. While the average daily attendance rate has been used for reporting purposes for many years, the use of a single average measure tends to mask significant attendance problems.



Chronic Absenteeism



Goal-Chronic Absenteeism



Chronic Absenteeism vs Compulsory School Attendance

Chronic
Absenteeism

- Incorporates all absences: excused, unexcused and suspensions of enrolled students.

Compulsory
Attendance

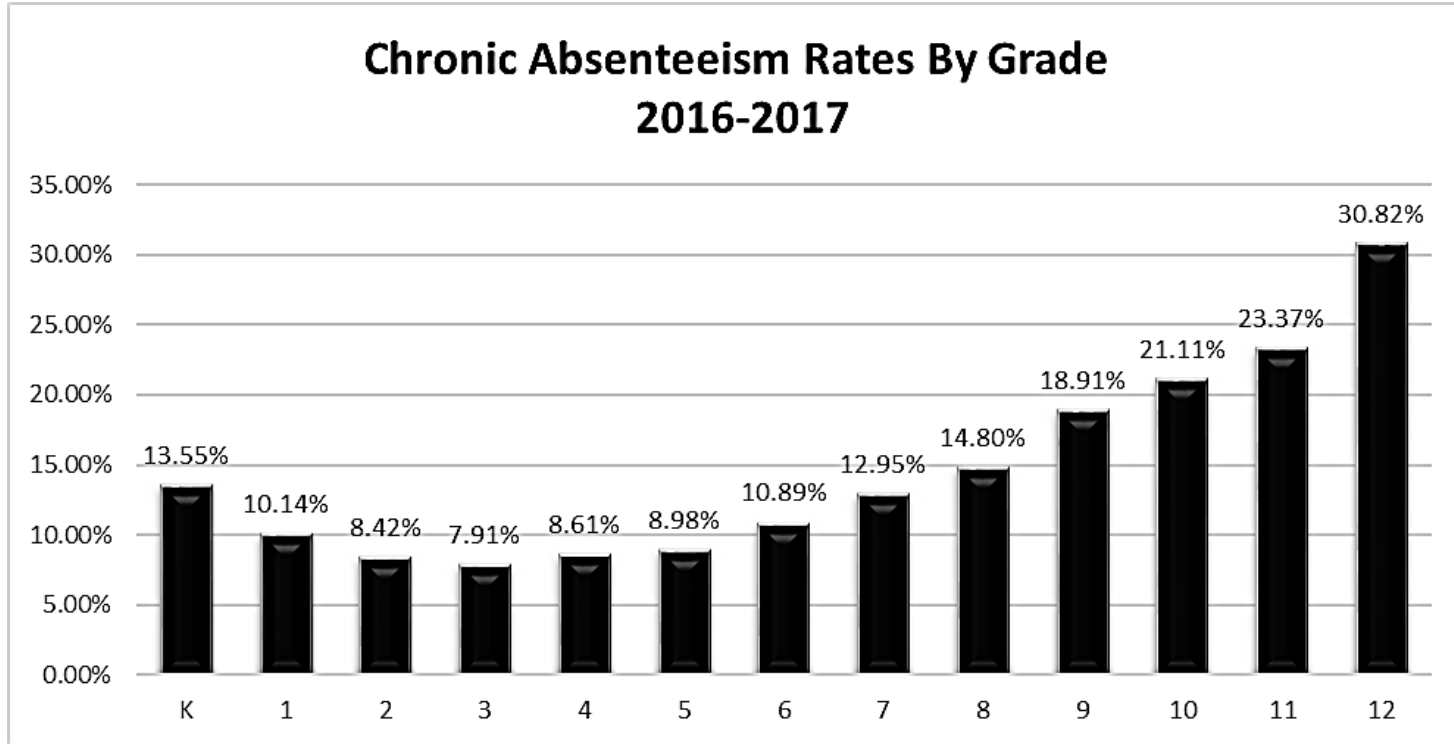
- The law that mandates any minor between the ages of 6 -17 (age 5 if enrolled in a full-day kindergarten program) to be enrolled in a private, public or home school.

Current Chronic Absenteeism Rate 2016-2017



14.15%

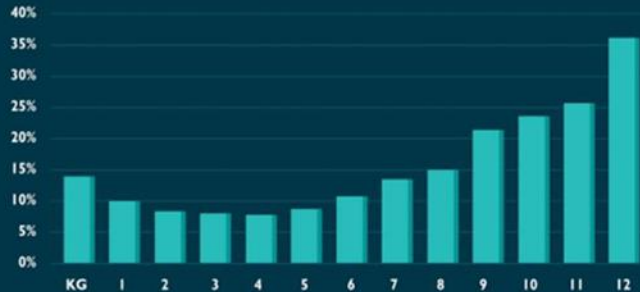
Mississippi Rates by Grade



Chronic Absenteeism Comparison

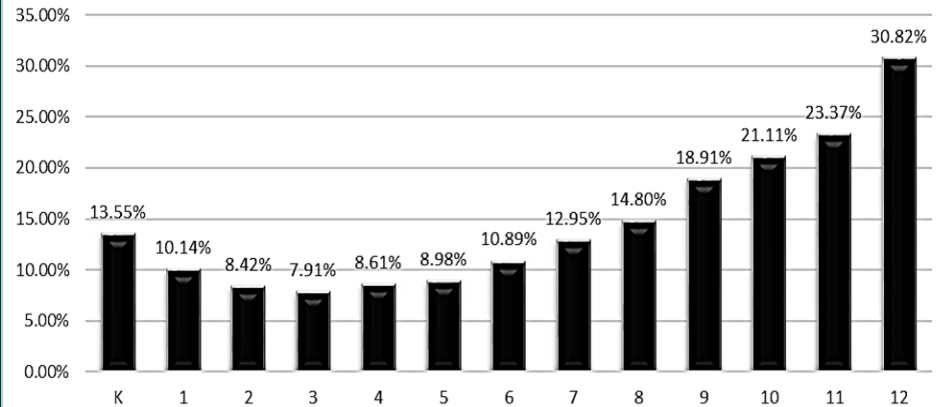
Mississippi's Chronic Absence Rates by Grade Mirror Those of Other States

Chronic Absence Rates in Mississippi by Grade, 2013/14 SY



Source: Analysis of MDE data by P15 KIDS COUNT

Chronic Absenteeism Rates By Grade 2016-2017



Miss. Code Ann. §37-13-89

- Cooperate with any public agency to locate and identify all compulsory-school-age children who are not attending school
- Cooperate with all courts of competent jurisdiction
- Investigate all cases of nonattendance and unlawful absences by compulsory-school-age children not enrolled in a nonpublic school

Miss. Code Ann. §37-13-89

- Provide appropriate counseling to encourage all school-age children to attend school until they have completed high school
- Attempt to secure the provision of social or welfare services that may be required to enable any child to attend school

Miss. Code Ann. §37-13-89

- Contact the home or place of residence of a compulsory-school-age child and any other place in which the officer is likely to find any compulsory-school-age child when the child is absent from school during school hours without a valid written excuse from school officials, and when the child is found, the officer shall notify the parents and school officials as to where the child was physically located

Miss. Code Ann. §37-13-89

- Contact promptly the home of each compulsory-school-age child in the school district within the officer's jurisdiction who is not enrolled in school or is not in attendance at public school and is without a valid written excuse from school officials; if no valid reason is found for the nonenrollment or absence from the school, the school attendance officer shall give written notice to the parent, guardian or custodian of the requirement for the child's enrollment or attendance

Miss. Code Ann. §37-13-89

- Collect and maintain information concerning absenteeism, dropouts and other attendance-related problems, as may be required by law or the Office of Compulsory School Attendance Enforcement;
- Perform all other duties relating to compulsory school attendance established by the State Department of Education or district school attendance supervisor, or both

School Attendance Officer's Role

- Investigating all cases of non-attendance
- Assisting parents with locating resources for specific needs
- Counseling students and families about the importance of attending school
- Submitting referrals to counselors regarding a student's emotional, academic, social and career needs

School Attendance Officer's Role

- Acting as a resource for school districts, families and students
- Participating in the various committees related to reducing chronic absenteeism or any other attendance initiatives
- Aiding districts in the development and implementation of chronic absenteeism prevention initiatives

School Attendance Officer's Role

- Promoting good attendance across schools and grade bands
- Aiding districts in identifying environmental factors that may contribute to health issues in the district
- Aiding districts in understanding chronic absenteeism

School Attendance Officer's Role

- Aiding districts in analyzing their chronic absenteeism data
- Implementing chronic absenteeism prevention initiatives

L.O.U Reads

School Attendance Officers

Mississippi Campaign for Grade Level
Reading

Call to Action

- Decrease the number of students identified as missing 10% or more of days from school during an academic school year.
- Acknowledge and address health-related challenges that impede positive academic outcomes for students.
- Provide parents with the needed resources that will aid them in fulfilling their critical role as brain builder, first teacher, tutor, strongest advocate, and best coach.

“Breakfast at the Bus Stop” Initiative

- Provides students with a free breakfast three (3) times a year at the bus stop-two within an Oxford Housing Authority community and the other in an area of the city with a high chronic absenteeism rate.
- Provides an opportunity to motivate and encourage students to attend school every day.
- Provides an opportunity to build and/or enhance relationships with students, parents, and community.

“Breakfast at the Bus Stop” Participants

- ✓ Law Enforcement
- ✓ School Personnel
- ✓ Community Leaders
- ✓ L.O.U. Reads Coalition



L.O.U. Reads members solicit breakfast donations from various businesses around Oxford.

“Must Be Present to Win” Initiative

- Conduct parent meetings in the various Lafayette County communities.
- Afford school district personnel an opportunity to provide information on current district policies.
- Receive information on the compulsory school attendance law.
- Provide the community with an opportunity to tour the L.O.U. Reads literacy bus.
- Award prizes on the day of report cards in accordance with L.O.U Reads attendance requirements.

“Be There” Campaign

- Designate September as Attendance Awareness month.
- Celebrate in both of the local school districts.
- Involve community leaders, L.O.U. Reads Coalition, and community stakeholders to speak on the importance of attendance.



“We Were Here” Celebration

- Conduct celebration at each elementary school.
- Award classes with good attendance.
- Disseminate information regarding the importance of attending school every day through various media outlets (i.e. radio, Facebook, Instagram).

Prevention Picnic

- The picnic is provided for students and families that have been identified as being chronically absent for numerous years.
- The families are contacted by the School Attendance Officer serving the school districts in Lafayette County.
- The families meet for lunch with the School Attendance Officer and district personnel (teachers, interventionists, etc.) at the local park.
- The barriers that deter students from attending school are discussed during the picnic meeting.

Resources

- Attendanceworks.org
- Parent Read-at-Home Plan
http://www.mdek12.org/sites/default/files/documents/OAE/Literacy/ResourcesForParents/parent-read-at-home-plan_mde_lbpa.pdf
- Family Guides for Student
<http://www.mdek12.org/OAE/OEER/FamilyGuidesEnglish>



MISSISSIPPI
DEPARTMENT OF
EDUCATION

Ensuring a bright *future* for every child

Toni Y. Kersh, Bureau Director

TKersh@mdek12.org

Allison Crain, School Attendance Officer

Lafayette County

ACrain@mdek12.org