

# Accountability Overview

Elevate Teachers Conference

July 23, 2018



MISSISSIPPI  
DEPARTMENT OF  
EDUCATION

Ensuring a bright future for every child

**Alan Burrow**  
Director

Office of District and School Performance

## Mississippi Department of Education

### VISION

To create a world-class educational system that gives students the knowledge and skills to be successful in college and the workforce, and to flourish as parents and citizens

### MISSION

To provide leadership through the development of policy and accountability systems so that all students are prepared to compete in the global community



MISSISSIPPI  
DEPARTMENT OF  
EDUCATION

Ensuring a bright future for every child

## State Board of Education Goals FIVE-YEAR STRATEGIC PLAN FOR 2016-2020

1. All Students Proficient and Showing Growth in All Assessed Areas
2. Every Student Graduates from High School and is Ready for College and Career
3. Every Child Has Access to a High-Quality Early Childhood Program
4. Every School Has Effective Teachers and Leaders
5. Every Community Effectively Uses a World-Class Data System to Improve Student Outcomes
6. Every School and District is Rated “C” or Higher



## Office of District and School Performance



## What Do We Measure?

### **Proficiency/Performance**

- Did the student meet expectations?

### **Growth**

- Did the student improve as expected?

### **Participation**

- Did the student participate in assessments/classes?

### **Graduation Rates**

- Did the student graduate as expected and on time?



5

## Annual Subject Area Assessments

- Assessments used to measure proficiency and growth include:
  - Grade-level (3-8) assessments in Reading/Language Arts
  - Grade-level (3-8) assessments in Mathematics
  - High School-level assessment in English II
  - High School-level assessments in Algebra I
  - Alternate Assessment (3-8 and High School) in Reading
  - Alternate Assessment (3-8 and High School) in Mathematics
- Proficiency (not growth) is measured in Grades 5 and 8 Science, Biology I and U.S. History assessments.



6

### Accountability Points for Elementary/Middle – 700 Points

Reading	Math	Science
Proficiency (100 pts.)	Proficiency (100 pts.)	Proficiency (100 pts.)
Growth All Students (100 pts.)	Growth All Students (100 pts.)	
Growth Lowest 25% (100 pts.)	Growth Lowest 25% (100 pts.)	
Participation is measured in all components		

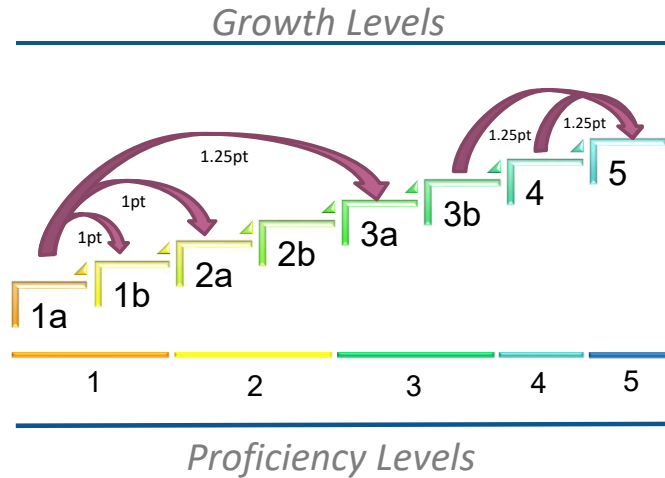


### Accountability Points for High Schools and Districts – 1,000 Points

Reading	Math	Other Subjects	Graduation 4 year	Acceleration	College & Career Readiness
Proficiency (100 pts.)	Proficiency (100 pts.)	Science Proficiency (50 pts.)	4-Year Cohort Rate (200 pts.)	Performance (25 pts.)	ACT Math Performance (25 pts.)
Growth All Students (100 pts.)	Growth All Students (100 pts.)	U.S. History Proficiency (50 pts.)		Participation (25 pts.)	ACT Reading or English Performance (25 pts.)
Growth Lowest 25% (100 pts.)	Growth Lowest 25% (100 pts.)				
Participation is measured in all components					



## Calculation of Growth



### Earning Growth Points:

- Moving 1 *Growth\** levels = 1 pt
- Moving 2 *Proficiency\** levels = 1.25 pts
- Moving from any level (<5) to level 5 = 1.25 pts
- Staying at level 5 = 1.25 pts



\*there are 5 Proficiency Levels and 8 Growth Levels

## Growth Weighting

First Year Proficiency Level	Level Needed in Year Two to Earn Growth	Level Needed to Earn Weighted Growth
Advanced	--	Advanced 1.25 ( <i>new</i> )
Proficient	Proficient (1.0)	Advanced (1.25)
Top Half of Pass	Proficient (1.0)	Advanced (1.25)
Bottom of Pass	Top Half of Pass or Proficient (1.0)	Advanced (1.25)
Top Half of Basic	Pass (1.0)	Proficient or Advanced (1.25)
Bottom Half of Basic	Top Half of Basic or Pass (1.0)	Proficient or Advanced (1.25)
Top Half of Minimal	Basic (top or bottom) (1.0)	Pass, Proficient, or Advanced (1.25)
Bottom Half of Minimal	Top Half of Minimal or Basic (top or bottom) (1.0)	Pass, Proficient, or Advanced (1.25)



# Acceleration

Participation 50%

**Numerator:**  
All students taking accelerated courses (AP, IB, AICE, dual credit/enrollment, industry certification)

÷

**Denominator:**  
All students enrolled in grades 11 and 12, plus 9<sup>th</sup> and 10<sup>th</sup> grade students taking and passing accelerated courses

=

**25 Points Possible:**  
e.g.,  $133/200 = 0.67$   
 $0.67 \times 25 = 16.8$  points

30.3 points total

Performance 50%

**Numerator:**  
All students meeting performance standards in accelerated courses (e.g., C grade in dual c/e, 3 on AP exam, or 4 on IB)

÷

**Denominator:**  
All students taking accelerated courses (AP, IB, AICE, dual credit/ enrollment, industry certification)

=

**25 Points Possible:**  
e.g.,  $72/133 = 0.54$   
 $0.54 \times 25 = 13.5$  points



# College and Career Readiness (CCR)

**CCR (from ACT) includes:**  
  
50% English or Reading;  
+  
50% Math

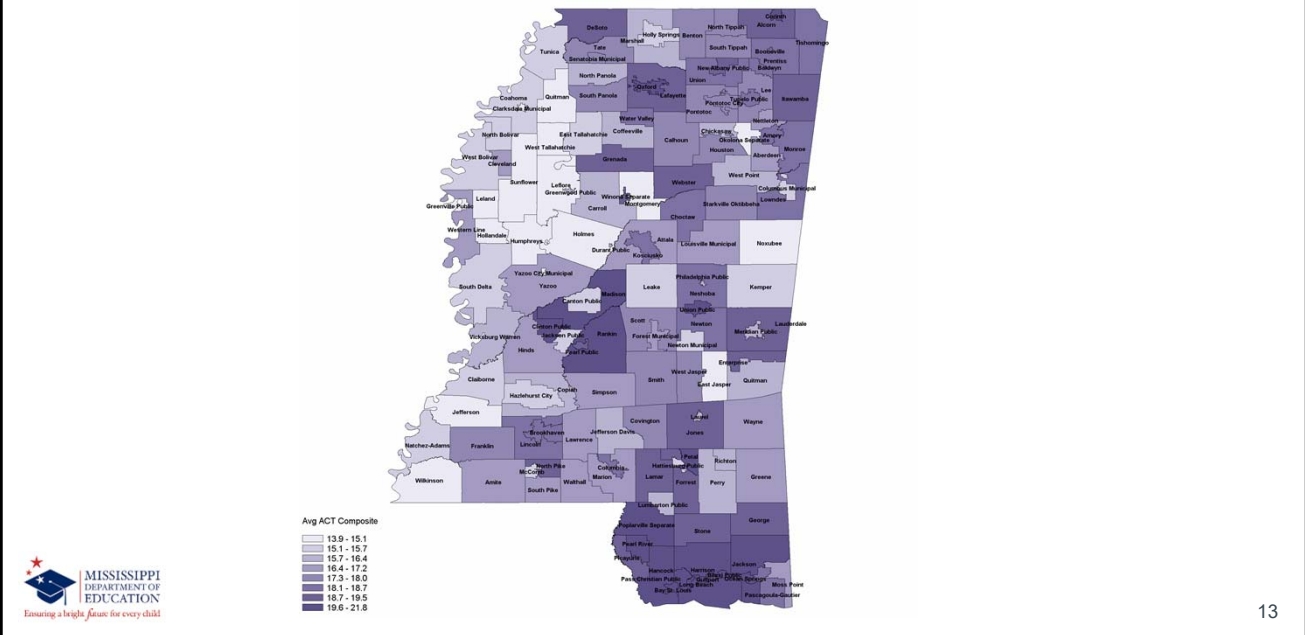
**Numerator:**  
All students meeting ACT benchmarks (18 in English or 22 in Reading; 22 in Math)

**Denominator:**  
All students from Senior Snapshot who participated in ACT (both statewide and non-state administration)

**Example:** School A has 40 students who participated in ACT; 34 met English/ Reading and 30 met Math benchmarks.  
  
**English/Reading (25 points):**  
 $34/40 = 0.85 \times 25 = 21.25$   
**Math (25 points):**  
 $30/40 = 0.75 \times 25 = 18.75$   
 $21.3 + 18.8 = 40$  points total



## Average Composite ACT Heat Map



## Graduation and Completion Rates

In accordance with 34 C.F.R. 200.19(b) and MS Code Ann. 37-17-6, graduation rates are calculated following the four-year adjusted cohort method.

- **Four-Year Cohort:** a group of students who enter 9<sup>th</sup> grade in MS for the first time, adjusted for students transferring into and out of the cohort, and are expected to graduate within four years
- **Graduate:** a student receiving a standard high school diploma in four years
- **Completer:** a student receiving an occupational diploma, certificate of attendance, or GED within the district
- **Still Enrolled:** a student still enrolled as September 1 of the year after the cohort's expected completion date
- **Dropout:** a student who leaves school during the cohort period without a diploma or certificate from the district

## Performance Level Cut Scores for 2016-2017 and Forward

Grade	Districts	700 Point Schools	1,000 Point Schools
A	668	442	787
B	599	377	679
C	536	328	612
D	489	269	547
F	< 489	< 269	< 547



## Summary Graphic

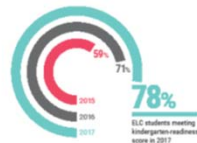
### MISSISSIPPI SUCCEEDS

Mississippi raised academic standards for pre-K through the 12th grade in recent years and has implemented aggressive reform efforts to raise student achievement. As a result, the key indicators of academic success have been on a steady, upward trajectory.

#### Three-Year Trend of Rising Student Achievement

#### EARLY LEARNING COLLABORATIVES

Students in Mississippi's Early Learning Collaboratives (ELC) achieve higher levels each year with the majority completing pre-K scoring AT OR ABOVE THE TARGET SCORE FOR EXITING PRE-K.



#### ACT

Mississippi administers the ACT to all 11th graders to provide equal access to the college readiness test. The results provide a measure of how well schools are preparing students for success in college and gives schools time to provide interventions to help students increase their ACT scores in the 12th grade.



#### LITERACY

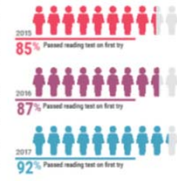
The Literacy-Based Promotion Act is helping to INCREASE LITERACY SKILLS among students in kindergarten through the 3rd grade.

#### KINDERGARTENERS

MEETING END-OF-YEAR TARGET SCORE



#### THIRD GRADERS





## Upcoming Data Resources

- [www.mdek12.org](http://www.mdek12.org)
- New State Report Card – October?
- Data Dashboards



17

## Accountability Overview

**Questions ?**



18

## Contact Information

C. Alan Burrow, Director  
Office of District and School Performance  
(601) 359-3514  
[aburrow@mdek12.org](mailto:aburrow@mdek12.org)

Anna Furniss, Director of Data Analytics  
Office of District and School Performance  
(601) 359-1060  
[afurniss@mdek12.org](mailto:afurniss@mdek12.org)

