

# Equity in Distance Learning Act - Part 8

# Data Collection

---

**John Kraman**, Chief Information Officer  
**Melissa Banks**, Director of Digital Learning

[mdek12.org](https://mdek12.org)



MISSISSIPPI  
DEPARTMENT OF  
EDUCATION

April 12, 2021



## VISION

To create a world-class educational system that gives students the knowledge and skills to be successful in college and the workforce, and to flourish as parents and citizens



## MISSION

To provide leadership through the development of policy and accountability systems so that all students are prepared to compete in the global community



1

**ALL** Students Proficient and Showing Growth in All Assessed Areas



2

**EVERY** Student Graduates from High School and is Ready for College and Career



3

**EVERY** Child Has Access to a High-Quality Early Childhood Program

**EVERY** School Has Effective Teachers and Leaders

4



**EVERY** Community Effectively Uses a World-Class Data System to Improve Student Outcomes

5



**EVERY** School and District is Rated “C” or Higher

6



# Equity in Distance Learning Act

---





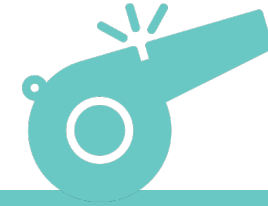
## Guidance

- Building Blocks
- Assemble the Pieces
- Mobilize Your Team



## Data

- Technology and Learning
- EdTech Impact



## Coaches

- Digital Learning Coaches
- Review Data with your Teachers
- Continuous Improvement

## **META DATA / DATA DRIVEN DECISION MAKING:**

- The grantee assures and agrees to fully participate in any surveys or other data collections regarding the performance and effectiveness of your district's digital learning program.

# Technology & Learning

---



### Research-based needs assessment that focuses on four domains of technology use and integration:

- **Classroom:** Explore how teachers and students use technology for learning
- **Access:** Understand the availability of devices and internet access at school and home
- **Skills:** Measure the level of teacher and student foundational, online, and multimedia skills
- **Environment:** Support policies, procedures, culture, professional development and technology needs





- Understand the technology impact on student learning
- Develop strategic plans for technology, professional development, and coaching support
- Compare results across schools to identify and spread successful initiatives
- Support digital learning initiatives with school boards and other key stakeholders



### TECHNOLOGY & PD PLANS

Strategic Plans  
Tailored to Needs



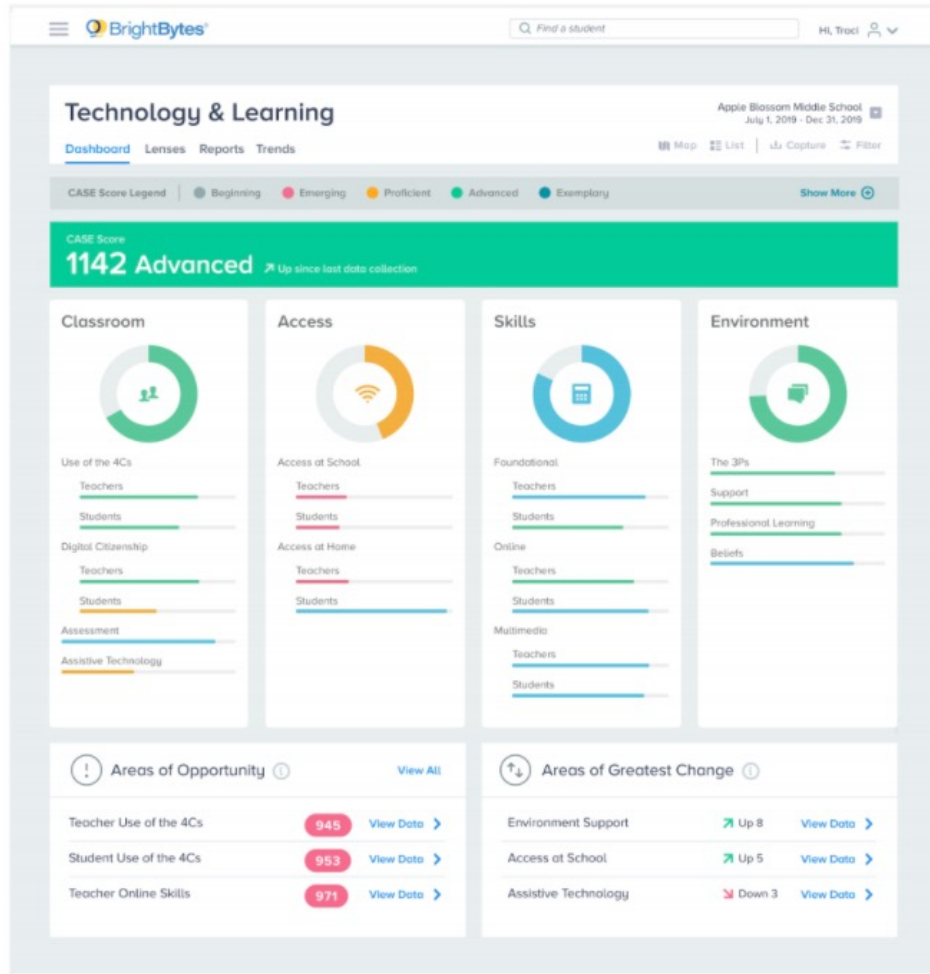
### DASHBOARDS

Dozens of Simple  
Dashboards



### TRACK PROGRESS

Monitor Progress  
over Time



- Watch a recording of one of the [BrightBytes March webinars](#)
- Review Technology & Learning [Solution Overview](#)
- View [examples of what districts](#) across the country have done with their Technology & Learning data



**Distribute needs assessment biannually to teachers, students, and families.**

- April 2021
- Fall semester 2021
- Continuing through at least 2023





## Stormy Cullum

Client Thought Partner  
[scullum@brightbytes.net](mailto:scullum@brightbytes.net)

## Michelle Samford

Client Thought Partner  
[msamford@brightbytes.net](mailto:msamford@brightbytes.net)

## Glen Zollman

VP of Customer Success  
[glen@brightbytes.net](mailto:glen@brightbytes.net)

- Every district has been assigned a BrightBytes Client Thought Partner (CTP).
- Check for an email from Michelle or Stormy, as they have already reached out to every district (including districts that did not attend or register for the webinars).
- Contact Glen Zollman if you cannot find an email from Michelle or Stormy. He will get you in touch with your assigned BrightBytes CTP.

# Next Steps

---

Spring and Fall Data Collections



1

**Contact Stormy or Michelle this week (by Friday, April 16) to schedule your Kickoff Meeting.**

2

**Verify participating schools, as well as 3-12 student and K-12 teacher counts.**

3

**Communicate timeline, purpose and value of the data collection to teachers, administrators, and parents.** (Email templates will be provided.) This will help make the survey process go as smoothly as possible.



- 4** Deploy needs assessment to administrators, teachers, students, and parents within 10 days of your Kickoff Meeting, but no later than May 10th.
- 5** Participate in a data walkthrough with your BrightBytes CTP after collection is completed.
- 6** **Optional:** Work with your BrightBytes CTP on communicating relevant results back to your students, teachers, administration, and parents. Select an area of focus and build a coaching plan to support and strengthen the focus area.



# MS Connects

---

Latest Information & Updates





f t YouTube

Search this site... SEARCH Select Language Accessibility

MISSISSIPPI DEPARTMENT OF EDUCATION Ensuring a bright future for every child

ABOUT NEWS REPORTS & DATA SERVICES DIRECTORY

COMMUNITY FAMILY EDUCATORS ADMINISTRATORS

## Mississippi Connects: Information for Districts

**Mississippi Connects** is a program to provide every public-school student in Mississippi with the technology to learn at school and at home. The unexpected need for distance learning provided Mississippi with an opportunity to reimagine the digital learning experience and create an innovative approach to providing students what they need to learn, whether inside a classroom or at home. Mississippi sees the urgent need for technology and is ready to meet that need to ensure every student can succeed.



**Digital Learning Guidance**  
PDF

**Funding**

- The Mississippi Legislature allocated \$200 million for Mississippi Connects through two laws, the [Equity in Distance Learning Act \(SB 3044\)](#) and the [Mississippi Pandemic](#)

**Technology and Strategic Services**

- 601-359-3487
- Staff
- FAQ

**Links**

- Technology and Strategic Services
- Core School Applications
- Customer Support and Training

[mdek12.org/MSConnectsTech](https://mdek12.org/MSConnectsTech)

# Questions

---





# Melissa Banks

Director of Digital Learning

[mebanks@mdek12.org](mailto:mebanks@mdek12.org)

[mdek12.org](https://mdek12.org)



MISSISSIPPI  
DEPARTMENT OF  
EDUCATION

