

AI ■ Artificial Intelligence ■ in the Classroom

John Kraman

Chief Information Officer

Chris Chism

Superintendent, Pearl School District

Melissa Banks

Director of Data Use & Professional Learning

mdek12.org



MISSISSIPPI
DEPARTMENT OF
EDUCATION

April 17, 2024



VISION

To create a world-class educational system that gives students the knowledge and skills to be successful in college and the workforce, and to flourish as parents and citizens



MISSION

To provide leadership through the development of policy and accountability systems so that all students are prepared to compete in the global community



1

ALL Students Proficient and Showing Growth in All Assessed Areas



2

EVERY Student Graduates from High School and is Ready for College and Career



3

EVERY Child Has Access to a High-Quality Early Childhood Program

EVERY School Has Effective Teachers and Leaders

4



EVERY Community Effectively Uses a World-Class Data System to Improve Student Outcomes

5



EVERY School and District is Rated “C” or Higher

6



Artificial Intelligence

Artificial intelligence (AI) is the ability of a computer or robot to mimic human tasks that requires learning, problem-solving, and recognizing patterns to make predictions.



Machine learning is the process that allows machines to learn from large amounts of data (e.g., images, video, text, and audio) independently.

Large language models are models that can understand and generate human language.

These models, known as **generative AI**, produce content such as text, images, and audio.

OPPORTUNITIES

Adapt to students' needs for mastery of content and provide personalized learning experiences

Provide basic accommodations or support to students

Serve as a brainstorming partner for teachers to enhance lessons in their classrooms

Stimulate discussions, create opportunities to apply critical thinking skills, spark curiosity, and unlock creativity

Increase productivity

CAUTIONS

Create opportunities for cheating or plagiarizing

Provide inaccurate or biased information

Suggest information, activities, or assessments that do not adequately meet the rigor or intent of a standard

Generate harmful or inappropriate images or information that can be used as disinformation or malinformation

Increase data privacy and security risks



Begin with the

FOUNDATION



How can AI be
integrated into your
**network of
supports?**



AI + Classroom Instruction

The teacher is standing in front of a digital whiteboard. The board displays the following mathematical expressions:

$$(5 \times 4) \times 3$$
$$5 \times (4 \times 3)$$
$$12 \times 5$$
$$(3 \times 5) \times 4$$

The teacher is pointing to the board with her right hand. The board also shows a toolbar with various icons for editing and navigation.





ARTIFICIAL INTELLIGENCE

Guidance for K-12 Classrooms



mdek12.org/DLResources

- AI definitions
- Impacts on the classroom
- Instructional uses for students, teachers, and administrators
- Strategies to deter cheating and plagiarism
- Policy considerations
- Training recommendations
- Resources

Digital Citizenship



Know and follow the **acceptable use policies** that outline ethical and appropriate use



Set **clear expectations** for students to use AI to complete classroom assignments

Reiterate rules and expectations for AI use

Review version history

Know the writing style of students

Activate lockdown browsers

Require students to document the writing process

Enter the assignment into an AI tool and evaluate the results

Consider how learning is being assessed

Use AI detection tools and plagiarism checkers

Provide **interactive tutors** that can offer support for complex topics or problems



Act as a **thought partner** to create lessons, activities, and assessments that support personalized learning and align with grade-level standards

Employ a variety of **text-to-speech** and voice recognition tools



Assist with **creating rubrics** to evaluate student work



Use **speech-to-text** or dictation tools

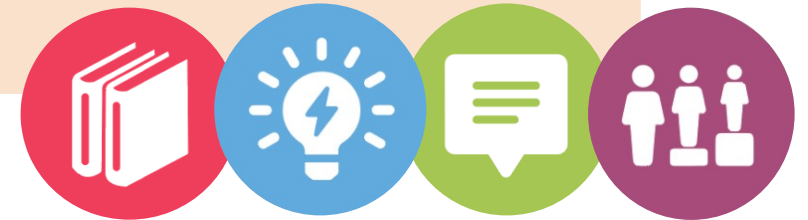


Translate text, images, and speech to communicate with others

Explain complex topics by providing a variety of leveled explanations and multiple representations of content



Assist with writing emails or personal communications



What safeguards should be put in place to ensure
safe and appropriate
use?



THE **BIGGEST**
RISK
IS DOING **NOTHING**

Hadi Partovi, Creator of Code.org



Evaluate tools



Adhere to security guidelines



Promote benefits and mitigate risks



Monitor use

Detect plagiarism



Expand digital citizenship instruction



Gather feedback



Chris Chism

Superintendent
Pearl School District



Questions?



John Kraman

Chief Information Officer

jkraman@mdek12.org

Melissa Banks

Director of Data Use and Professional Learning

mebanks@mdek12.org

Chris Chism

Superintendent, Pearl School District

cchism@pearlk12.com

mdek12.org



MISSISSIPPI
DEPARTMENT OF
EDUCATION

