

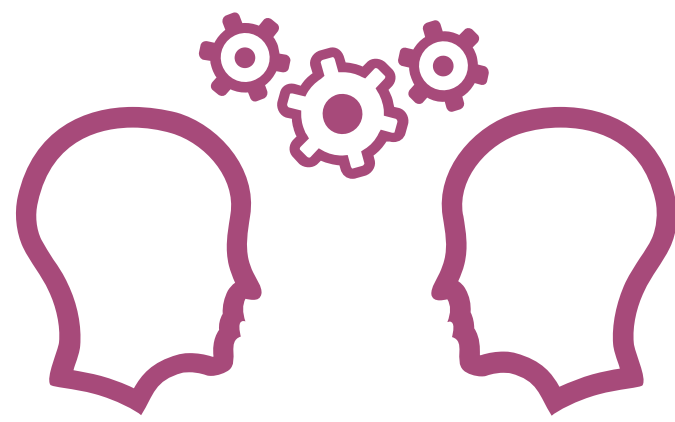
# MDE LITERACY COACH

## LIMITED SUPPORT SERVICES



The MDE utilizes a gradual release literacy coaching model to promote sustainability of best practices and to maximize and enhance instructional capacity. During the 2020–2021 school year, several literacy support schools will receive coaching support on a limited support status.

### Limited Literacy Support Schools



will have an assigned MDE Literacy Coach who will provide services that may include:

- School Literacy Plan Implementation (Technical Assistance)
- Learning Walk Facilitation and/or Debrief/Next Steps (Fall and Winter)
- Data Analysis Support: Beginning of Year (BOY), Middle of Year (MOY), and End of Year (EOY)
- Instructional Time Management (scheduling the 90-Minute Reading Block, effective use of support personnel, etc.)
- Professional Development (PD) and/or Professional Learning Communities (PLCs) Facilitation
- Support with Remote/Virtual Lessons and Learning Management Systems (LMS)



### Levels of Limited Support

**Limited Support 1 (LS1):** Coaches will provide monthly, on-site and/or **virtual coaching** visits.

- This may include scheduling and facilitating fall and winter learning walks (approximately 8 on-site and/or virtual coaching visits).

**Limited Support 2 (LS2):** Coaches will provide quarterly **virtual coaching** visits.

- This may include fall and winter learning walk debriefs, next steps, or pertinent professional development (approximately 4 **virtual coaching** visits).

**Limited Support 3 (LS3):** Coaches may provide technical professional development support **at the request of the administrator** (approximately 2 **virtual coaching** visits).

- This may include priority access to regional professional development training and requested resources through email.



### Virtual Coaching visits for teachers may include the following:

- Coaching by virtual platform (observations/conferences, planning, analyzing/using data, modeling, and/or co-teaching)
- Participating in virtual district/school organized parent meetings
- Participating in virtual learning walk debriefs and/or "next steps" recommendations
- Hosting capacity-building, virtual professional learning communities (for administrator and teachers) or professional development
- Assisting with instructional planning resources
- Assisting teachers (and families) with Social Emotional Learning (SEL) resources