



# **Student Performance Events**

## ***Stimulus Materials***

**Proficiency Assessments for Mississippi Students-Alternate**  
**MISSISSIPPI-ALT**

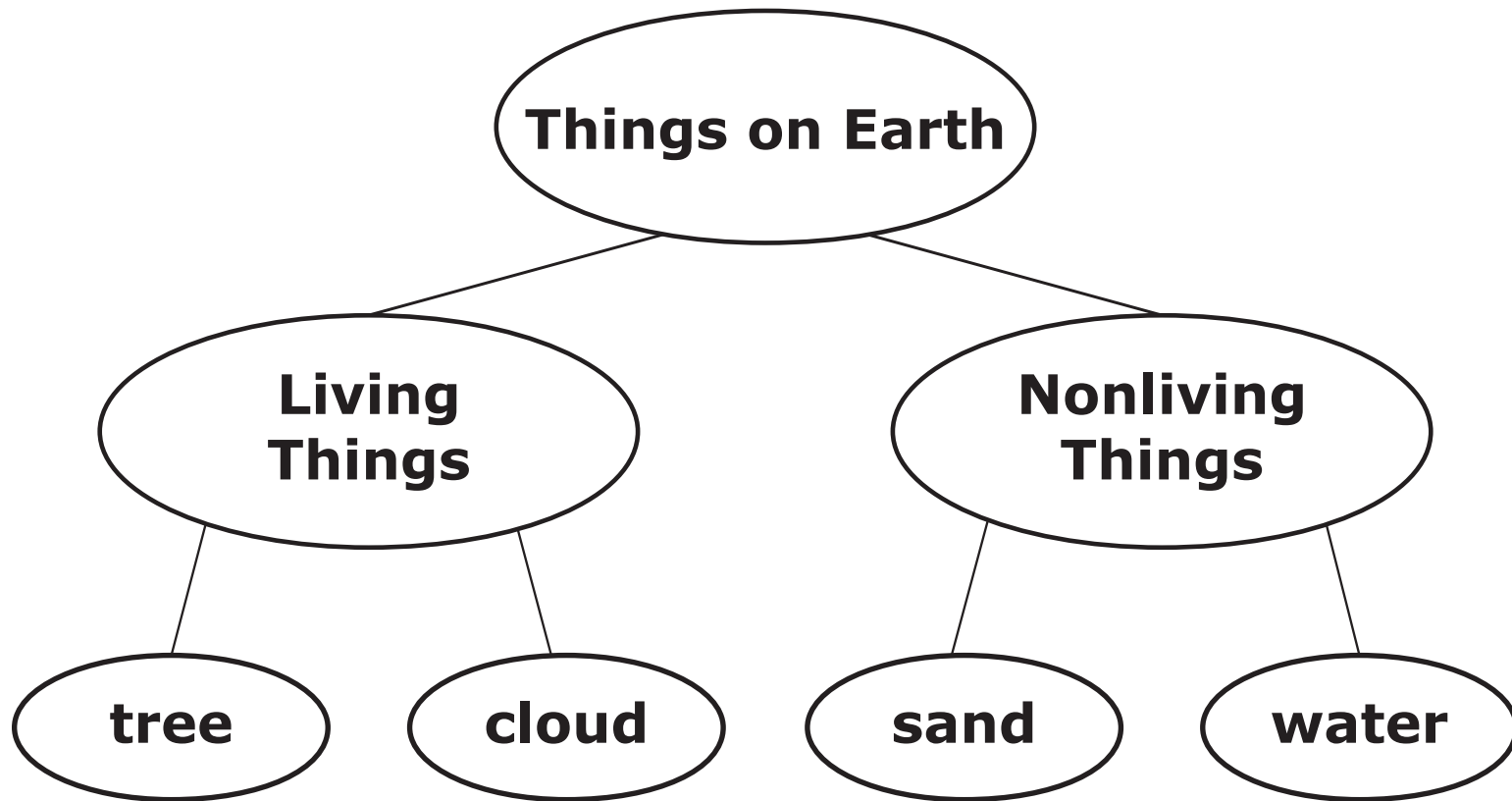
**Biology Released**

Copyright © 2022 by the Mississippi Department of Education

All rights reserved. No part of this publication may be reproduced or transmitted in any form or by any means, electronic or mechanical, including photocopy, recording, or any information storage and retrieval system, without permission in writing from the Mississippi Department of Education.

Printed in the United States of America.

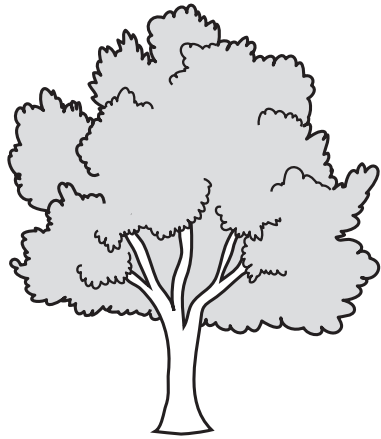
**A living thing is defined as anything that is alive. A nonliving thing is defined as anything that is not living. It has never been alive.**



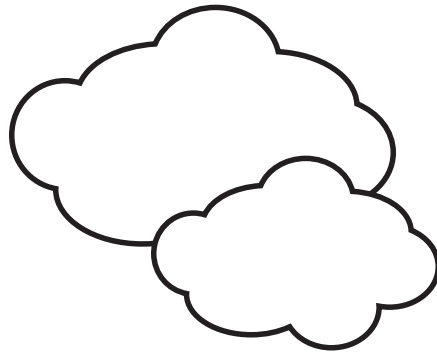
**tree**

**cloud**

**sand**



**tree**

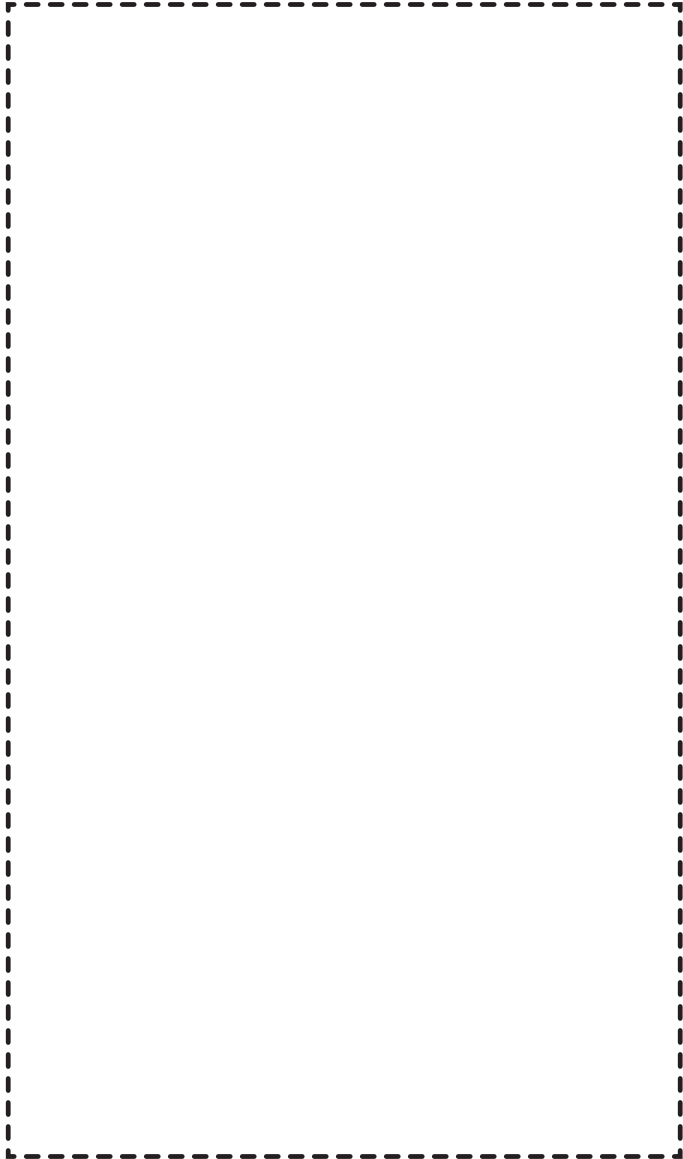
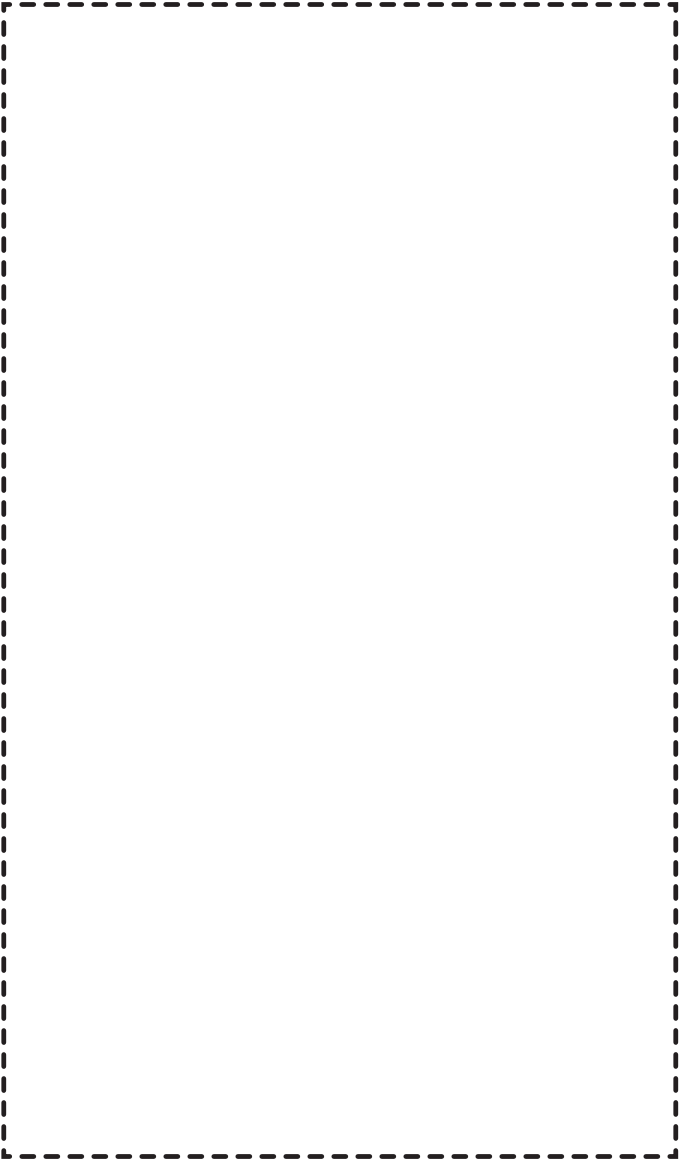


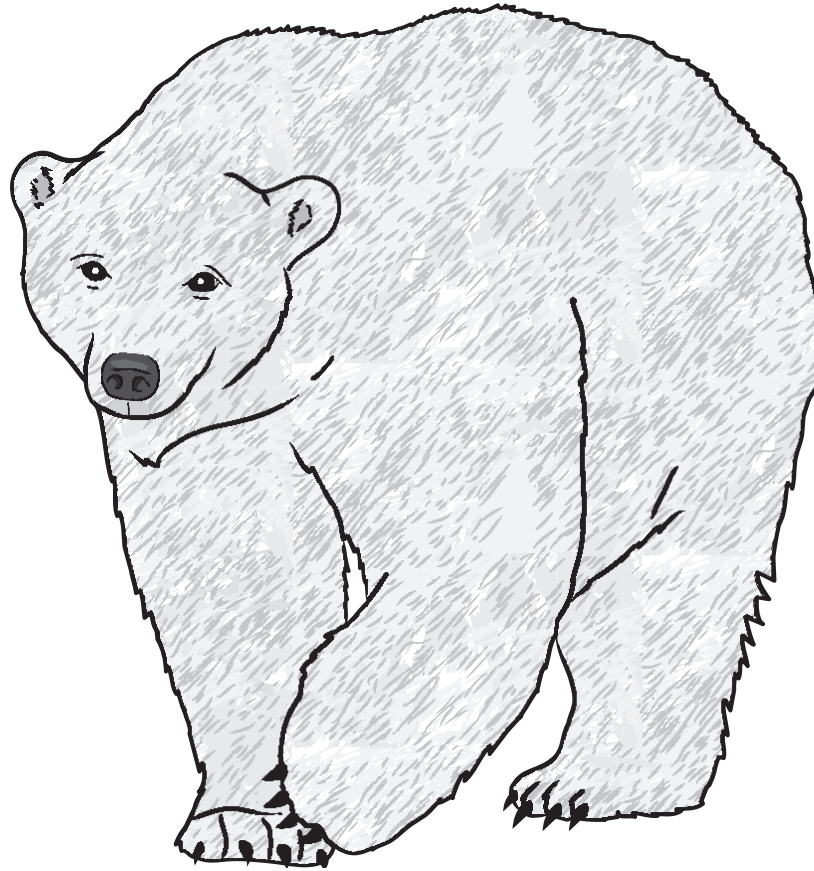
**cloud**



**sand**

**Over time, some animals were not able to adapt to changes in the environment. Animals that could not survive became extinct. “Extinct” means that none of them exist on Earth.**

<b>Extinct</b>	<b>Living</b>
	



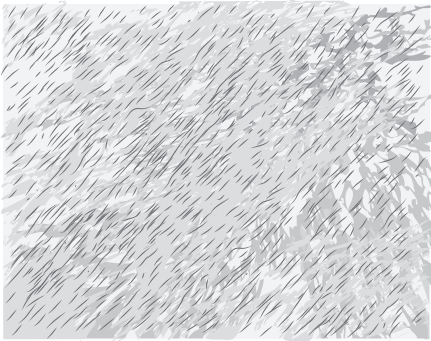
**polar bear**



**white  
fur**

**sharp  
claws**

**strong  
sense of  
smell**



**white  
fur**



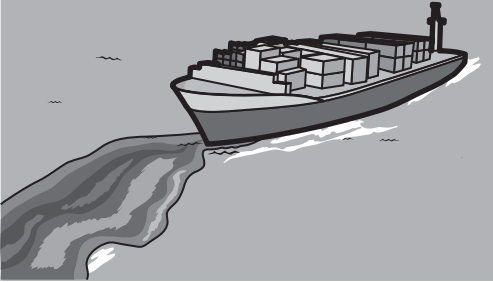
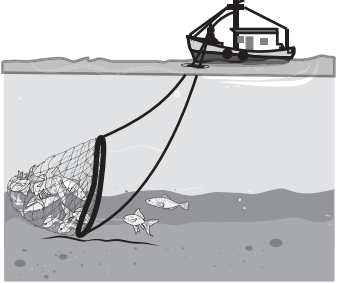

**sharp  
claws**



**strong sense  
of smell**

**Humans can impact the Earth in positive and negative ways. Some activities can harm Earth's natural resources and other activities can help them.**

<b>Action</b>	<b>Effect</b>
<b>oil spill</b>	
<b>overfishing</b>	
<b>cleaning a pond</b>	

<b>Action</b>	<b>Effect</b>
 <p data-bbox="583 591 842 656"><b>oil spill</b></p>	
 <p data-bbox="512 976 915 1040"><b>overfishing</b></p>	
 <p data-bbox="432 1354 995 1419"><b>cleaning a pond</b></p>	