

MISSISSIPPI

PUBLIC SCHOOL ACCOUNTABILITY STANDARDS

2016



**MISSISSIPPI
PUBLIC SCHOOL
ACCOUNTABILITY STANDARDS**

2016

MISSISSIPPI DEPARTMENT OF EDUCATION

OFFICE OF ACCOUNTABILITY

OFFICE OF ACCREDITATION

COMMISSION ON SCHOOL ACCREDITATION

Congressional District 1*

John Paul Mistilis	Oxford
Brian Harvey	Oxford
Eddie Prather	Tupelo

Congressional District 2*

Robert Tyner, Jr.	Clarksdale
Sean Brewer	Madison
Valencia Martin, M.D.	Greenwood

Congressional District 3*

Ann Jones	Jackson
Kenny Bush	Starkville
Heather Westerfield	Pearl

Congressional District 4*

Kelle Barfield	Vicksburg
Michael Miller	Brandon
Sara Foster	Brookhaven

Congressional District 5*

Michael Lindsey	Gulfport
Roy Gill	Gulfport
Anthony Montgomery	Biloxi

***Note:** Refers to the five (5) Congressional Districts as established at the time the Commission was authorized by Miss. Code Ann. § 37-17-3

**Paula A. Vanderford, Ph.D., Executive Secretary
Commission on School Accreditation**

<http://www.mde.k12.ms.us/accreditation>

MISSISSIPPI BOARD OF EDUCATION

John Kelly, Ph.D.	Gulfport
Rosemary Aultman	Clinton
Kami Bumgarner	Madison
Karen Elam, Ph.D.	Oxford
Johnny Franklin	Bolton
Jason Dean, Ph.D.	Ridgeland
William Harold Jones	Petal
Charles McClelland	Jackson
Buddy Bailey	Brandon

**Carey M. Wright, Ed.D.,
State Superintendent of Education**

**Paula A. Vanderford, Ph.D.,
Chief Accountability Officer**

<http://www.mde.k12.ms.us/mississippi-board-of-education>

NON-DISCRIMINATION POLICIES

The Mississippi State Board of Education, the Mississippi Department of Education, the Mississippi School of the Arts, the Mississippi School for the Blind, the Mississippi School for the Deaf, and the Mississippi School for Mathematics and Science do not discriminate on the basis of race, sex, color, religion, national origin, age, or disability in the provision of educational programs and services or employment opportunities and benefits. The following office has been designated to handle inquiries and complaints regarding the non-discrimination policies of the above-mentioned entities:

**Director, Office of Human Resources
Mississippi Department of Education
359 North West Street
Suite 203
Jackson, Mississippi 39201
(601) 359-3511**

MISSISSIPPI PUBLIC SCHOOL ACCOUNTABILITY STANDARDS

THE HISTORY OF ACCREDITATION IN MISSISSIPPI	ix
ACCREDITATION POLICIES OF THE STATE BOARD OF EDUCATION.....	1
1.0 ADMINISTRATIVE POLICY.....	1
1.1 MEMBERSHIP OF THE COMMISSION ON SCHOOL ACCREDITATION	1
1.2 APPOINTMENT	1
1.3 TERMS OF OFFICE	1
1.4 GENERAL DUTIES OF COMMISSION.....	1
1.5 OFFICERS	1
1.6 MEETINGS.....	1
1.7 EXPENSES.....	2
1.8 STAFF	2
2.0 DISTRICT ACCREDITATION POLICY.....	2
2.1 ASSIGNMENT OF DISTRICT ACCREDITATION STATUSES	2
2.2 PROCESS STANDARDS.....	2
2.3 ANNUAL ACCREDITATION STATUSES.....	2
2.4 NOTIFICATION OF DEFICIENCIES AFTER ASSIGNMENT OF STATUS	3
2.5 FACTORS THAT MAY AFFECT AN IMMEDIATE CHANGE IN ACCREDITATION STATUS	3
2.6 RESOLVING ACCREDITATION CONTROVERSIES	4
2.7 CONSOLIDATION OF SCHOOL DISTRICTS OR TRANSFER OF GRADES	4
2.8 CORRECTIVE ACTION PLAN (CAP) AND WITHDRAWAL OF ACCREDITATION	4
2.9 CONDITIONS OF EMERGENCY STATUS AND WITHDRAWAL OF ACCREDITATION	5
3.0 PERFORMANCE CLASSIFICATION POLICY.....	6
3.1 ASSIGNMENT OF PERFORMANCE CLASSIFICATIONS.....	6
3.2 PERFORMANCE STANDARDS	7
3.3 PERFORMANCE CLASSIFICATIONS	7
3.4 SCHOOLS AT-RISK	8
4.0 RECOGNITION AND REWARDS	9
4.1 RECOGNITION.....	9
4.2 REWARDS	9
5.0 ACCREDITATION MONITORING PROCEDURES	10
5.1 ON-SITE EVALUATIONS.....	10
5.2 INVESTIGATIVE EVALUATIONS (COMPLAINTS AGAINST DISTRICTS)	10
5.3 SPECIAL TEST AUDITS	11
5.4 SUMMER PROGRAM AUDITS	12
5.5 OTHER STATE/FEDERAL PROGRAM AUDITS/EVALUATIONS.....	12
5.6 ANALYSIS AND VERIFICATION OF ACCREDITATION INFORMATION	12
6.0 HEARING AND APPEAL PROCEDURES.....	12
6.1 REQUEST FOR HEARING	12
6.2 AUTHORIZED REPRESENTATIVE OF THE COMMISSION	12
6.3 HEARING PROCEDURES	12
6.4 APPEAL PROCEDURES.....	13
7.0 ANNUAL REPORT	13
PROCESS STANDARDS.....	14
ADMINISTRATION AND PERSONNEL.....	14
SCHOOL OPERATIONS.....	15
INSTRUCTIONAL PRACTICES.....	18
SAFE AND HEALTHY SCHOOLS	20

PERFORMANCE STANDARDS.....	22
INTRODUCTION.....	22
INCLUSION OF STUDENTS WITH DISABILITIES AND ENGLISH LEARNERS (EL).....	22
Mississippi Statewide Accountability System: Business Rules	25
APPENDIX A-1.....	39
APPENDIX A-2.....	42
APPENDIX A-3.....	46
APPENDIX A-4.....	49
Equivalency Chart for Innovative Programs	52
APPENDIX A-5.....	53
APPENDIX B	59
APPENDIX C-1	61
APPENDIX C-2	63
APPENDIX E	65
APPENDIX F	66
APPENDIX G.....	76
APPENDIX H.....	77
GLOSSARY	79

THE HISTORY OF ACCREDITATION IN MISSISSIPPI

Since the early 1900s, accreditation has sought to improve schools through the requirements of the accrediting agency. In Mississippi, the roots of school accreditation are found in the institutions of higher learning and state teachers' associations. It all began in 1896 when the University of Mississippi first published a program of studies for an approved high school. The schools that met the University's prescribed program of studies were officially listed as affiliated high schools, and the graduates of those schools were admitted to the University on the basis of their records (certificates), without examination. The list included white high schools in Arkansas, Mississippi, and Tennessee, and it was soon recognized as the approved list by the other colleges in the state.

The effort to regulate the program of studies in secondary schools was strengthened in 1918 when the University requested the Mississippi Education Association to appoint a committee to classify the affiliated high schools. The Association appointed five (5) members to a High School Classifying Committee and required this group to establish standards of classification, to devise a system for grouping high schools, and to assign each high school to its appropriate group. The responsibilities and workload of this subsidiary committee of the Mississippi Education Association continued to grow, and the need for full-time statewide supervision of high schools soon became apparent. This need was met in 1919 when the position of state supervisor of secondary schools was created in the Mississippi Department of Education (MDE). In May of 1920, the High School Classifying Committee became the State High School Accrediting Commission, a standing committee of the Mississippi Education Association. The State Supervisor of Secondary Schools chaired the first Commission, whose membership consisted of representatives from two (2) high schools, the A and M College, Millsaps College, Mississippi College, the Mississippi State College for Women, and the University of Mississippi. This Commission required high schools to meet eleven (11) minimum standards before being accredited and defined an accredited high school as one that meets all requirements and, after inspection, has been approved by the Commission.

Accreditation of elementary schools was not addressed until 1926. During that year, the Mississippi Education Association created the Elementary School Accrediting Commission to perform the same duties in regulating programs for elementary schools that the High School Accrediting Commission did for secondary schools. The Elementary Commission consisted of ten (10) members, with the newly appointed State Elementary School Supervisor serving as executive secretary of the group.

Operating as separate entities, these two (2) Commissions regulated the elementary and secondary programs in white schools until 1949 when they were discontinued by the Mississippi Education Association, and the Mississippi Accrediting Commission was formed.

The first efforts to accredit black schools began in 1935 when the Mississippi Association for Teachers in Colored Schools organized the Negro Accrediting Commission. In 1947, the Mississippi Association for Teachers in Colored Schools became the Mississippi Teachers Association, and the Commission continued to operate under the renamed Teachers' association until 1959. During that year, the name was changed

to the State Accrediting Commission, and one (1) of the first official actions of this group was to adopt the existing rules and regulations of the Mississippi Accrediting Commission.

1960-1980

The decade of the sixties found these two (2) Commissions sharing responsibilities for accrediting black and white schools; and, in carrying out their duties, both groups made extensive use of officials in the SBE. The director of the Division of Instruction and his staff served as liaison personnel in distributing, collecting, and processing accreditation information. This practice of “separate but equal” accreditation terminated in the Summer of 1970 when the State Board of Education (SBE) assumed the responsibility, thus adding a legal dimension to a voluntary process designed to improve schools.

The accreditation law of 1970 gave the SBE the power and authority to prescribe the standards and procedures for the accreditation of schools and placed the responsibility for enforcement in the MDE. The law further mandated the SBE to appoint a Commission on School Accreditation (CSA), whose membership would consist of three (3) representatives from each of the five (5) Congressional districts and whose primary purpose would be to continually review the accreditation system. Contrary to the general perception of the public, the law did not make accreditation compulsory for any school. The process continued to be voluntary and open to any elementary, secondary, or special school in the state.

In the decade following the passage of the accreditation law of 1970, the accreditation system (although now legal) continued to emphasize quantitative factors (specific resources and personnel) as the means by which school improvement was to be accomplished. The provision of adequate resources and personnel was assumed to be a sufficient indicator of the quality of the school program, but, as accreditation information was evaluated, it was found that the quality of the school program was not a direct correlate of the required quantitative factors. However, the system was successful in assuring the presence of adequate resources and in standardizing the organization and operation of school programs. These assurances were not enough to soothe a growing disgruntled public, which was constantly evaluating the products of accredited schools – its students.

1980-PRESENT

As the decade of the eighties approached, the state was set for reform in education and, ultimately, in school accreditation. The public wanted the emphasis in accrediting schools shifted from measures of quantity to those of quality. A series of significant legislative mandates passed during the past twenty (20) years have been instrumental in not only creating the current public school accreditation model and accountability system, but also establishing Mississippi as a nationally recognized leader in the school improvement and accountability movement.

Governor William Winter recognized the need for education reform and initiated the accountability movement in Mississippi beginning with the Education Reform Act of 1982. This landmark legislation established a task force to study and propose a plan to establish guidelines and criteria for a permanent performance-based system of school accreditation for all public elementary and secondary schools. The legislation created and authorized the CSA to establish a system for assuring the quality of school programs in Mississippi. This new system, appropriately deemed performance-based school accreditation, was based upon measures that focus on the extent to which schools help students master defined content and objectives. The law clearly shifted the emphasis in school accreditation to the outcomes of education, specifically those related to student achievement, and changed the accreditation process from voluntary to compulsory for all public elementary and secondary schools.

Legislation enacted in 1994 maintained the emphasis on student achievement and mandated that the SBE strengthen and expand the performance-based accreditation system. The 1994 legislation required the system to include: rigorous minimum standards; levels above the minimum that demand High Performing performance; and strict accountability measures for districts that fail to meet minimum standards.

During the 1999 Legislative Session, the Mississippi Student Achievement Improvement Act of 1999 was passed requiring the SBE to create a state-of-the-art school evaluation and improvement system. The act required the SBE to implement a performance-based accreditation system for both individual schools and school districts. This legislation also required the SBE to set annual performance standards for each of the schools in the state and to measure the performance of each school against itself, using student growth and performance measures. Before new standards and tests were developed, hundreds of teachers helped to re-write the curriculum for mathematics and language arts.

Additional legislation passed in 2000 further clarified requirements for establishing new accountability standards, making accreditation levels reflective of student performance at the school level rather than the district level. This 2000 legislation required individual school performance accreditation levels to be based on two (2) criteria: (1) meeting an annual growth expectation in student achievement and (2) the percentage of students scoring at the basic and proficient level. These will be identified as the Achievement Model and the Growth Model. This legislation also established an intensive assistance program for schools not meeting the accreditation standards. Support and training for teachers, administrators, and school board members have been and will continue to be offered to local school districts.

In this accountability system, public school accreditation was two-fold: Each school district was awarded an accreditation status based on compliance with process standards, and individual schools are assigned a school performance classification based on student achievement. District accreditation statuses were awarded under the new accreditation model in October 2001, and individual school performance classifications were assigned in September 2003. For the first time, all components of a school - students, teachers, principals, superintendents, and school board members – were held accountable for student learning.

In 2007, an Accountability Task Force began working on what a new accountability system should look like in light of the new curriculum framework in Language Arts, Mathematics and corresponding assessments that were being implemented. Furthermore, the SBE had established three (3) Bold Goals; (1) Reduce the dropout rate to 13% by 2013, (2) Reach the national average on national assessments by 2013, and (3) Ensure that all students exit 3rd grade reading on grade level by 2020. Based on this commitment, the Accountability Task Force and the CSA shaped an accountability system aimed at moving Mississippi schools toward national performance standards.

In the Fall of 2008, the Accountability Task Force began developing recommendations for the revised accountability system. These recommendations were finalized by the CSA and submitted for approval to the SBE. This accountability system received SBE approval on March 20, 2009.

This accountability system focused on a number of key issues. It was determined that a performance classification designation would be issued to both schools and districts. In addition to an achievement component and a growth component, a graduation/dropout component was included for high schools and school districts. Another key point for consideration in this accountability system was that the

performance classification issued to schools and districts should differ from the previous labeling system so there could be no comparisons between the two (2) models. A final consideration was that the district performance classification should be based on the performance of all students in the district, treating the district as one (1) K-12 school.

The SBE had set a very bold goal of reaching the national average on national assessments by 2013. When the SBE passed this accountability rating system on March 20, 2009, they took an important step toward reaching that goal and made a tremendous commitment to prepare Mississippi children to compete on a national and international level. This system placed Mississippi standards on par with standards in other states and allowed greater transparency in school, district, and state performance.

Children First Act of 2009. Senate Bill 2405 of the 2008 Regular Session was enacted to create a task force to study and report the status of underperforming schools and school districts, enhancement of accountability, and sanctions imposed on those schools and school districts. As a result of the task force study and recommendation, Senate Bill 2628, referred to as the *Children First Act (CFA)*, was approved by Governor Haley Barbour on April 8, 2009.

Recommendations from the MDE Accountability Task Force were developed during a series of public meetings and workshops held in the Summer of 2012 through the Fall of 2013. The recommendations of the Accountability Task Force are directly aligned with the vision and mission of the SBE. The SBE set forth the following vision:

- To create a world-class education system that gives students the knowledge and skills to be successful in college and the workforce and flourish as parents and citizens. To do so, the state must provide leadership through the development of policy and accountability systems so that all students are prepared to compete in the global community.

The following Accountability Task Force recommendations support the three (3) SBE goals:

- Goal 1: To mobilize resources and supplies to help ensure that all students exit third grade reading on grade level.
- Goal 2: To reduce the dropout rate to 13% by 2015.
- Goal 3: To have 60% of students scoring proficient and advanced on assessments of the Common Core State Standards by 2016 with incremental increases of 3% each year thereafter.

The authority for Mississippi's system of school accountability is addressed in Mississippi Statutes and Rules. The current Mississippi Statewide Accountability System was based on Federal laws as required under the Elementary and Secondary Education Act Flexibility Waiver, Miss. Code Ann. § 37-17-6, and the recommendations from the Accountability Task Force and Technical Review Committee. The recommendations were developed during a series of public meetings and workshops held in the Summer of 2012 through the Spring of 2014. The recommendations of the Accountability Task Force are directly aligned with vision, mission, and goals of the SBE.

In 2013, the Educational Principles and Practices Task Force was created through a mandate from the SBE to review and revise the *Mississippi Public School Accountability Standards, 2012*. The task force members consisted of 9 (nine) District Superintendents, 1 (one) SBE member, and 1 (one) MDE Representative. Through the assistance of SEDL's Southeast Comprehensive Center (SECC), the final version of the updated Accountability Standards was approved by the SBE in April, 2014 and became official July 1, 2014, for the 2014-2015 School Year.

In October of 2014 the SBE approved accreditation audit procedures that may lead to the declaration of a State of Emergency in accordance with Miss. Code Ann. §§ 37-17-6 (12)(a)(b) and Accreditation Policy 5.0. Accreditation Policy 5.0 gives the SBE and CSA the authority to call an on-site audit or investigation of a school district at any time. Accreditation Policy 5.2 also authorizes public school district audits to be conducted in response to formal complaints being received by the MDE.

In December, 2014 the SBE unveiled a 5-year Strategic Plan for 2016-2020, which sets the roadmap for changing the trajectory of public education in Mississippi. The plan details five (5) goals to improve educational outcomes for every public school student in the state. The five (5) goals are:

1. All Students Proficient and Showing Growth in All Assessed Areas
2. Every Student Graduates from High School and is Ready for College and Career
3. Every Child Has Access to a High-Quality Early Childhood Program
4. Every School Has Effective Teachers and Leaders
5. Every Community Effectively Using a World-Class Data System to Improve Student Outcomes
6. Every School and District is Rated “C” or Higher

The 5-year plan builds upon the Board’s existing priorities of improving literacy, particularly among K-3 students, reducing the dropout rate and improving overall student proficiency. Embedded in the plan is the Board’s full commitment to maintaining Mississippi’s College- and Career-Ready Standards.

In the Spring of 2017 a Task Force was established to review and update Process Standards 29, 30, and 31 as well as their related checklists and monitoring forms. Editorial changes were made to the Process Standards while the monitoring forms, checklist, and related documents were updated with a scheduled release date for the 2017/2018 school year.

Building upon the work completed by the Educational Principles and Practices Task Force in 2013 a new Task Force has been created to address changes in MS Code and State Board Policy since the 2013 revision. Updates to the monitoring forms and checklists to conform with Process Standard changes will ensure continuity with a release date planned for the Fall/Winter of 2017/2018.

In June 2017 the SBE approved the Mississippi Every Student Succeeds Act (ESSA), the federal law that replaces No Child Left Behind (NCLB). ESSA was adopted to improve transparency, provide support for underperforming schools and districts, increase accountability for results, and focus professional training for better quality teachers and school leaders to positively impact public education in Mississippi.

ACCREDITATION POLICIES OF THE STATE BOARD OF EDUCATION

1.0 ADMINISTRATIVE POLICY

The Education Reform Act of 1982 created the Commission on School Accreditation (CSA) to continuously review the standards on accreditation and the enforcement thereof and to make recommendations thereon to the State Board of Education (SBE). (Miss. Code Ann. § 37-17-3)

1.1 MEMBERSHIP OF THE COMMISSION ON SCHOOL ACCREDITATION

The CSA is composed of fifteen (15) members, with three (3) representatives from each of the five (5) Congressional Districts as established at the time the CSA was authorized by Miss. Code Ann. § 37-17-3. The membership consists of two (2) classroom teachers, two (2) principals of schools, two (2) school district superintendents, two (2) local school board members, and seven (7) individuals who are not actively engaged in the education profession. All appointments to the CSA shall comply with Miss. Code Ann. § 37-17-3.

1.2 APPOINTMENT

Each member of the CSA is appointed by the State Board upon recommendation of the State Superintendent of Education.

1.3 TERMS OF OFFICE

The length of a regular term is four (4) years. Upon acceptance of appointment, each member is eligible to serve for two (2) consecutive terms. If a member changes employment or accepts a position that is no longer reflective of the category for which he or she was appointed, or if a member moves out of the Congressional district he or she was appointed to represent, that member must resign, and a new member will be appointed to fill the unexpired term. A member of the CSA who is appointed to fill an unexpired term is eligible for appointment to his or her own term of office.

1.4 GENERAL DUTIES OF COMMISSION ON SCHOOL ACCREDITATION

The SBE, acting through the CSA, shall establish and implement a permanent performance-based accreditation system, and all public elementary and secondary schools shall be accredited under this system. It shall be the purpose of the CSA to continually review and enforce the standards on accreditation and to make recommendations to the SBE.

1.5 OFFICERS

The CSA annually elects a chairperson and vice-chairperson.

1.6 MEETINGS

The CSA meets on call of the State Superintendent of Education. Any official action taken by the CSA requires the presence of a quorum, which is defined as a majority of the present membership. Superintendents of school districts will receive written notice of the place, time, and date of each CSA meeting. Individuals and/or groups who request a time slot on the agenda are required to submit such in writing to the executive secretary. All requests for agenda consideration must be received by the executive secretary no later than seven (7) days prior to the meeting of the CSA. Agenda items received after this deadline may be added if approved by a majority vote of the CSA.

1.7 EXPENSES

According to Miss. Code Ann. § 25-3-41 and § 25-3-69, each member of the CSA is reimbursed for per diem, travel, and other allowable expenses that are incurred when attending meetings of the CSA. The expenses are paid out of any funds available for the operation of the Mississippi Department of Education (MDE).

1.8 STAFF

Staff assigned to the CSA consists of personnel in the MDE. The State Superintendent of Education designates one (1) staff member to serve as executive secretary.

2.0 DISTRICT ACCREDITATION POLICY

The SBE, acting through the CSA, is required to establish and implement a process for accountability at the public school district level. School districts are held accountable for Accreditation Policies and Process Standards and receive an annual accreditation status. Standards of the performance-based accreditation system recommended by the CSA and adopted by the SBE are contained in the current edition of the *Mississippi Public School Accountability Standards*.

2.1 ASSIGNMENT OF DISTRICT ACCREDITATION STATUSES

The CSA determines the annual accreditation status of all public school districts in the fall of each school year based on verified accreditation data from the previous school year. An annual district accreditation status is assigned based on compliance with Process Standards. Information concerning district compliance with Process Standards is reported to the CSA on an annual basis. (See Policy 2.2 below.)

The district superintendent and school principals are responsible for ensuring that all data reported to the MDE are true and accurate as verified by supporting documentation on file in the school district. Reporting false information is a violation of the accreditation requirements set forth by the SBE and may result in the downgrading of the district's accreditation status.

After the CSA takes action on accreditation records presented, the district superintendent and the chairperson of the local school board are notified of the status assigned. The decision of the CSA is final unless appealed by the school board of the school district to the SBE in accordance with the appeal procedures in Policy 6.0 of this document.

2.2 PROCESS STANDARDS

Process (input) Standards address accepted educational principles and practices that are believed to promote educational quality. Any verified violation of a Process Standard is noted on the record of a school district at the time of discovery within any school year, but does not affect the current accreditation status of the district. (See Policy 2.5 for the exceptions.) If a noted violation of a Process Standard has not been corrected by the following school year when accreditation statuses are assigned, the violation is reported to the CSA for appropriate action.

The SBE, acting through the CSA, reserves the right to suspend school district compliance of any Accreditation Process Standard that is not directly mandated by state or federal law. (See Policy 4.2 for Rewards.)

2.3 ANNUAL ACCREDITATION STATUSES

In the fall of each year, every public school district will be assigned an annual accreditation status based on compliance with Process Standards and Accreditation Policies.

ACCREDITED is assigned to a district that complies with Accreditation Policies and 100% of the Process Standards. (See exceptions in Appendices F and H.)

PROBATION is assigned to a district that complies with fewer than 100% of the Accreditation Policies and Process Standards. The district will be required to develop and implement a Corrective Action Plan (CAP) with defined timelines to address the deficiencies. (See Policy 2.8.)

WITHDRAWN is assigned to a district that has previously been assigned a PROBATION status and still does not comply with its Corrective Action Plan (CAP). Any school district placed in conservatorship may have its accreditation withdrawn. The district will be required to develop and implement a Corrective Action Plan (CAP) with defined timelines to address the deficiencies. (See Policy 2.8.)

2.4 NOTIFICATION OF DEFICIENCIES AFTER ASSIGNMENT OF STATUS

After the annual assignment of a district's accreditation status, the process of determining statuses for the following school year begins. When information on file in the MDE indicates that a school district may be in violation of a standard, the superintendent and the school board of the district are informed in writing by appropriate staff in the Department responsible for monitoring compliance with the standard. School district officials are given thirty (30) days from the date of receipt of notification to provide a written response verifying accuracy or inaccuracy of the notice of possible noncompliance with the standard.

If the written response includes appropriate evidence to correct or refute the alleged violation, the superintendent of the district is notified by appropriate staff in the Department responsible for monitoring compliance with the standard. Any verified violation of a standard is reported in writing to the Office of Accreditation, where it is noted on the current Accreditation Record Summary of the district. (See Glossary for definition of Accreditation Record Summary.) The appropriate staff member in the Office of Accreditation notifies the superintendent of the district in writing of the verified violation.

2.5 FACTORS THAT MAY AFFECT AN IMMEDIATE CHANGE IN ACCREDITATION STATUS

An assigned accreditation status may remain unchanged during that school year except in those cases where verified noncompliance of accreditation standards may downgrade an accreditation status immediately, in accordance with Sections 2.5.1 or 2.5.2.

2.5.1 Recommended Accreditation Status – PROBATION

Districts in violation of any of the following standards will be presented to the CSA for action. That action may include downgrading the district's accreditation status to Probation.

- Accreditation Policy 2.1, reporting false information,
- Standard 1.1 and 1.3, failure to implement appropriate standards of governance,
- Standard 1.2, failure to comply with school board policies that meet state and federal statutes, rules, and regulations,
- Standards 4 and 5, failure to comply with financial accountability requirements,
- Standard 14, failure to comply with graduation requirements,
- Standard 16, failure to comply with test security procedures required by the Mississippi Statewide Assessment System,
- Standards 17.1-17.8, failure to comply with state/federal regulations, or
- Standards 29, 30, and 31, failure to comply with standards that sustain a safe school climate.

2.5.2 Recommended Accreditation Status – WITHDRAWN

Districts in violation of any of the following standards will be presented to the CSA for action. That action may include withdrawal of the district's accreditation.

- Accreditation Policy 2.1, reporting false information,
- Standard 1.1 and 1.3, failure to implement appropriate standards of governance,
- Standard 1.2, failure to comply with school board policies that meet state and federal statutes, rules, and regulations,

- Standards 4 and 5, failure to comply with financial accountability requirements of a serious nature,
- Standard 14, failure to comply with graduation requirements specified in Standards 14.1, 14.2, and 14.5,
- Standard 16, failure to comply with test security procedures required by the Mississippi Statewide Assessment System in Appendix F, numbers 8 and 9,
- Standards 17.4-17.6, federal programs whose regulations call for strong sanctions for continued patterns of noncompliance, or
- Standards 29, 30, and 31, failure to comply with standards that pose life-threatening conditions for students and staff.

2.6 RESOLVING ACCREDITATION CONTROVERSIES

All controversies involving the accreditation statuses of school districts are initially heard by a duly authorized representative of the CSA in accordance with Miss. Code Ann. § 37-17-5, and Policy 6.0.

2.7 CONSOLIDATION OF SCHOOL DISTRICTS OR TRANSFER OF GRADES

When two (2) or more school districts consolidate or when two (2) or more school boards approve the transfer of a grade or grades, the affected school district(s) may be allowed to maintain its accreditation status for a period of time to be determined upon application to the CSA. The CSA shall review the application of any such affected school district(s) and submit a recommendation to the SBE for approval.

2.8 CORRECTIVE ACTION PLAN (CAP) AND WITHDRAWAL OF ACCREDITATION

2.8.1 Corrective Action Plan (CAP) with Definitive Timelines

When a school district has been assigned a PROBATION or WITHDRAWN accreditation status, the school district with assistance from the MDE shall develop a Corrective Action Plan (CAP) with defined timelines in which to correct the district's deficiencies. The SBE implements the program of development in each district assigned a PROBATION or WITHDRAWN status in accordance with Miss. Code Ann. § 37-17-6(11).

The school district is required to submit a Corrective Action Plan (CAP) within sixty (60) days of notification. The plan must stipulate what will be done to remove the deficiencies and the timeline required. The plan must be approved by the local school board as documented by official minutes and bear the signatures of the school board chairperson and district superintendent. When corrective action has been implemented to remove a citation, the school district must submit documentary evidence confirming such to the Office of Accreditation. Assigned MDE staff may conduct follow-up visits as necessary to verify corrective action and compliance.

2.8.2 Withdrawal of Accreditation

If the district's deficiencies are not removed during the time specified in the Corrective Action Plan (CAP), the school district is subject to having its accreditation withdrawn by the CSA in accordance with Miss. Code Ann. § 37-17-6. The status of the district will be listed as WITHDRAWN NOT ACCREDITED, and the record of that district will continue to be maintained.

2.8.2.1 Hearings

Before requesting approval from the SBE to withdraw the accredited status of a district, the CSA conducts a hearing (See Policy 2.9 for exception) to allow the officials of the affected district to present evidence or other reasons why its accreditation should not be withdrawn. {Miss. Code Ann. § 37-17-6(12)(a)}

2.8.2.2 Results of Hearings

Within forty-five (45) calendar days of the conclusion of the hearing and after consideration of the results of the hearing, the CSA shall be authorized, with the approval of the SBE, to

withdraw the accreditation of the district and may issue a request to the Governor that a state of emergency be declared in that district in accordance with Miss. Code Ann. § 37-17-6(12)(a). If the decision is made not to withdraw the accredited status of the district, a new timeline is established in the district's Corrective Action Plan (CAP).

2.8.2.3 Public Notice

After a state of emergency has been declared, the CSA files a public notice at least once a week for at least three (3) consecutive weeks in a newspaper published within the immediate or general vicinity of the affected school district in accordance with Miss. Code Ann. § 37-17-6(13).

2.8.2.4 Access to School District Records

School districts are required to produce necessary reports, correspondence, financial statements, and any other documents necessary for the CSA to implement this section on withdrawal of accreditation and conservatorship.

2.8.2.5 Reinstatement of an Accredited Status

Based on the recommendation from the Office of Accreditation or the State Superintendent of Education, the superintendent and school board president of a school district whose accreditation has been withdrawn may file a petition with the CSA on School Accreditation for reinstatement of accreditation to be effective on January 1 or July 1. The CSA shall require all school districts that petition for reinstatement of accreditation to appear before the CSA to furnish evidence satisfactory to the CSA that the school district is in compliance with all accreditation standards prior to the reinstatement of accreditation.

2.9 CONDITIONS OF EMERGENCY STATUS AND WITHDRAWAL OF ACCREDITATION

2.9.1 Declaration of State of Emergency

The SBE may request the Governor to declare a state of emergency in any school district when any of the following emergency situations occur. Upon the declaration of the state of emergency by the Governor, the SBE may take all such action for dealing with the school districts as authorized under subsection (12) or (15) of Miss. Code Ann. § 37-17-6, including the withdrawal of the district's accreditation.

2.9.1.1 Emergency Situation

The SBE and the CSA determine that an extreme emergency situation exists in a school district which jeopardizes the safety, security, or educational interests of the children enrolled in the schools in that district, and such emergency situation is believed to be related to a serious violation or violations of accreditation standards or state or federal law. For purposes of this paragraph, the declarations of a state of emergency shall not be limited to those instances when a school district's impairments are related to a lack of financial resources, but also shall include serious failure to meet minimum academic standards, as evidenced by a continued pattern of poor student performance. {Miss. Code Ann. § 37-17-6(12)(b)}

2.9.1.2 Failing School District

A school district meets the SBE's definition of a failing school district for two (2) consecutive full school years. {Miss. Code Ann. § 37-17-6(12)(b)}

2.9.1.3 Schools At-Risk

A school continues to be designated a School At-Risk after three (3) years of implementing a school improvement plan, or in the event that more than fifty percent (50%) of the schools within the school district are designated as Schools At-Risk in any one (1) year. {Miss. Code Ann. § 37-17-6 (12) (b)} (See Policy 3.4.1 for Schools At-Risk designation.)

2.9.2 Penalty for the Withdrawal of Accreditation

Policy 2.9.2 will become effective one (1) calendar year following the Withdrawal of Accreditation by the CSA and the SBE.

The withdrawal of a school district's accreditation by the CSA will result in the following:

- A school or schools within a district shall be limited to participation in no more than fifty percent (50%) of the regular season of any interscholastic activity, which shall include division/district/regional games,
- The interscholastic season schedule for a school or schools within a district shall not include the opening day of season or any type of post season participation, as determined by the Office of Accreditation, and
- Cheerleading, drill and dance squads, speech and debate, choral music, and band may participate in district or state contest, but shall not be eligible to receive ratings.

All schedule requests must be submitted in writing to the MDE, Office of Accreditation, at least thirty (30) days prior to the beginning of the season. **The Office of Accreditation shall pre-approve all schedules and participation in interscholastic activities.** In addition to the suspension of all post season activities, the school district shall not be allowed to participate in jamborees, special games, parades, tournaments, holiday tournaments, or competitions of any nature.

Failure to comply with section 2.9.2 will result in the suspension of ALL interscholastic activities.

Failure of a district to have its accreditation reinstated by the CSA after a period of two (2) calendar years from the date of the withdrawal of accreditation shall result in the immediate suspension of ALL interscholastic activities until the district's accreditation status is reinstated.

Note: Interscholastic activities include, but are not limited to, football, basketball, baseball, track and field, cross country, tennis, golf, volleyball, softball (fast pitch and slow pitch), soccer, wrestling, swimming, power lifting, bowling, archery, cheerleading, drill, and dance squads, speech and debate, choral music, and band.

3.0 PERFORMANCE CLASSIFICATION POLICY

The SBE, acting through the CSA, is required to establish and implement a process for accountability at the individual public school level and district level. Individual schools and districts are held accountable for: 1) student achievement, 2) student growth, and 3) graduation, if applicable, and receive an annual School Performance Classification and District Performance Classification. (See Glossary for definitions of an attendance center and school.)

When the district establishes a new school and/or the district reconfigures the specific grades or students assigned to an existing school(s) within the district, the student achievement data used to assign school performance classifications will follow the guidelines established in the School Performance Standards and School Performance Model.

3.1 ASSIGNMENT OF PERFORMANCE CLASSIFICATIONS

3.1.1 School Performance Classification

Information concerning school performance is reported to the CSA on an annual basis, and annual performance classifications will be assigned in the fall of each school year. Each public school that has both achievement and growth data will be assigned an annual performance classification. In addition, the Graduation Rate will be included in determining the performance classification of schools with a Grade 12. An alternative school will not be assigned a school performance classification. (See 7 Miss. Admin. Code Pt. 3, Ch. 7, R. 7.1, R. 7.2 and the Glossary for definition of alternative school.)

3.1.2 District Performance Classification

Information concerning district performance is reported to the CSA on an annual basis, and annual performance classifications will be assigned in the fall of each school year. Each public school district will be assigned an annual performance classification based on achievement, growth, and graduation rate. A district performance level is assigned based on the performance of all students in the district [i.e., the district will be treated as one (1) K-12 school].

3.1.3 Internal Review of Preliminary Accountability Results

If the school district has reason to believe the preliminary results of the state or federal accountability system applied to a district or school are incorrect due to a calculation or data error or other substantive reasons, the school district may submit written evidence to the MDE, the Offices of Accreditation and District and School Performance, to support the position of the school district. All requests for review must be submitted in writing based on the timeline published each year by the Offices of Accreditation and District and School Performance. Any requests not submitted based upon the timeline published by the Offices of Accreditation and District and School Performance will not be considered after the deadline for submission.

The Offices of Accreditation and District and School Performance will review these requests and present them to an Internal Review Committee for consideration. The Internal Review Committee will consist of, at a minimum, one (1) external chairperson and four (4) MDE representatives.

The Office of Accreditation as well as the Office of District and School Performance will present the decisions of the Internal Review Committee to the CSA.

3.1.4 Review or Appeal of Final Accountability Results

The school district must submit written evidence to appeal the final results of the statewide accountability system approved by the CSA and the SBE. The appeal must be submitted to the Offices of Accreditation and District and School Performance within ten (10) calendar days of the SBE's approval.

Any appeal to the final results will follow the same process as a request for review (i.e., Internal Review Committee, CSA, and SBE); however, during the appeal of the final results, school districts will receive notification of the Internal Review Committee's decision prior to presentation to the CSA on School Accreditation. The district superintendent may request to address the CSA regarding the appeal of the final results. The CSA will recommend a final decision to the SBE for approval. The SBE makes the final determination of the appeal's disposition.

3.2 PERFORMANCE STANDARDS

Performance (output or product) standards address selected components of the statewide testing program and other outcome measures related to the performance of a school and/or district. (See Performance Standards.) The SBE may also take into account such factors as graduation rates, dropout rates, completion rates, College and Career Readiness and Acceleration, the extent to which the school or district employs qualified teachers in every classroom, and any other factors deemed appropriate by the SBE.

3.3 PERFORMANCE CLASSIFICATIONS –

The performance classification assigned to a school or district will be determined by performance indicators as defined in the Mississippi Statewide Accountability System. These indicators are scored and combined to assign performance classifications of **A, B, C, D, and F**. (See Performance Standards)

A school will not receive a school performance classification if the test data have been invalidated, and the school performance classification will be noted as Test Data Invalidated. (See Appendix F.)

3.4 SCHOOLS AT-RISK

Following an analysis of school data each year, the MDE shall identify those schools that are deficient in educating students and are in need of improvement in accordance with Miss. Code Ann. § 37-18-3 and § 37-18-5. This analysis shall indicate individual school performance in two (2) areas: (a) meeting its assigned yearly growth expectation and (b) percentage of the students in the school that are proficient.

3.4.1 Designation

A school shall be identified as a School At-Risk and in need of assistance if the school:

- (a) Does not meet its growth expectation and has a percentage of students functioning below grade level or
- (b) Is identified as an F School as designated by the SBE.

3.4.2 Notification

Within fifteen (15) days after a School At-Risk has been identified, written notice shall be sent by the SBE by certified mail to the school principal, and the local board of education.

3.4.3 Evaluation Teams and Evaluation Report

Within fifteen (15) days after notification, the SBE shall assign an evaluation team to the school, subject to the availability of funding. The evaluation team shall be independent of the school being evaluated and may include employees of the State Department of Education. The team may include retired educators who have met certain standards and have completed all necessary training.

The evaluation team shall analyze the School At-Risk's data to determine probable areas of weakness before conducting an on-site audit. After completing the evaluation of the School At-Risk, the team shall prepare and adopt its school evaluation report, which shall be submitted to the State Superintendent of Education for approval within ninety (90) calendar days. The evaluation report shall identify any personnel who were found by the evaluation team to be in need of improvement and need to participate in a professional development plan.

Following the State Superintendent's approval of the report, a representative of the State Superintendent and the evaluation team leader shall present the report to the principal of the School At-Risk, the school district superintendent, and school board members of the local school district. Following this presentation, the evaluation report shall be presented to the community served by the School At-Risk at an advertised public meeting.

3.4.4 School Improvement Plan

Based on the findings of the evaluation report and the results of the public meeting, the MDE and evaluation team leader shall assist the school principal and other local school officials in the development of a school improvement action plan.

The school improvement action plan shall be developed and approved by the principal of the School At-Risk, the superintendent of the local school district, the local school board, and a majority of the teachers of the school. If the plan is not approved, the SBE may approve and implement the plan in the school.

The State Department of Education shall provide technical assistance and shall assist in identifying funding to the School At-Risk in the implementation of the school improvement action plan, including the implementation of any recommended professional development plan, and the department may contract with the Institutions of Higher Learning to provide such technical assistance. The assistance team shall collaborate with school and school district employees in the implementation and monitoring of the school improvement action plan and the State Department of Education shall ensure that a report is issued monthly to the local school board and the local community-based advisory council.

A school district that has been designated as an F as defined by the SBE or a district and/or a school designated below a C, shall establish a community-based pre-kindergarten through higher education (P-16) council comprised of a broad spectrum of the community, including economic developers, elected officials, civic leaders, business leaders, faith-based leaders, social services, nonprofit organizations, school attendance officers, law enforcement officials, health department officials, day care providers, librarians, parents, and others with the knowledge and resources that can be leveraged to build strong communities. The SBE shall develop procedures for appointments to the council, which shall not be appointed solely by the school board. The council will serve as a community-led group that is inclusive, accountable, and required to publicly report progress to the community as a whole.

3.4.5 Professional Development Plan for Educators

As part of the school improvement action plan for a School At-Risk, a professional development plan shall be prepared for those school administrators, teachers, or other employees who are identified by the evaluation team as needing improvement.

4.0 RECOGNITION AND REWARDS

The SBE shall provide special recognition and/or rewards to individual schools or school districts meeting the highest levels of accreditation standards as defined by the SBE. A school or district with a Letter Grade in the top two (2) ranges will be identified as meeting the highest level of accreditation standards.

4.1 RECOGNITION

Special recognition will be provided to all schools meeting the highest levels of accreditation standards. Examples of recognition include, but are not limited to the following:

- Public announcements and events;
- Special recognition of student progress and effort;
- Certificates of recognition and plaques for teachers, principals, superintendents, support and classified personnel, and parents; and
- Media announcements utilizing the services of the Mississippi Educational Television.

4.2 REWARDS

Rewards may be provided for schools and school districts assigned the highest levels of performance as defined by the SBE as follows:

4.2.1 Exemptions for Schools Meeting the Highest Levels of Performance

Schools Meeting the Highest Levels of Performance may be exempted from citations of noncompliance with the Process Standards listed below. For specific details, refer to each process standard referenced below.

- Library Media/Organized Collection (Standard 18.1)
- Library Media Program of Service (Standard 18.2)
- Limit on Course Preparations (Standard 25)
- Student Teacher Ratios in Grades 1-4 (Standard 28.2)
- Limit of 150 Students Per Teacher in Academic Core Subjects (Standard 28.5)

4.2.2 Exemptions for Districts Meeting the Highest Levels of Performance

School districts assigned the Highest Levels of Performance may be exempted from citations of noncompliance with the Process Standards listed below. For specific details, refer to each process standard referenced below.

- Community Involvement, Parental Communication, and Business Partnerships (Standard 12)
- Senior Preparation for Graduation Ceremonies (Standard 13.4)

- Summer School Program Requirements (Standard 13.5)
- Professional Development Plan/Program (Standard 15)
- Early Childhood Programs (kindergarten and teacher assistant) (Standard 17.1)
- Instructional Management System (Standard 20)
- Suggested Teaching Strategies, Resources, and Assessment Strategies (Standard 20)

4.2.3 Financial Rewards

If funds are appropriated by the legislature, Schools Meeting the Highest Levels of Performance may apply to the SBE for monetary incentives to be used for selected school needs, as identified by a vote of all licensed and instructional personnel employed at the school. These incentive funds may be used for specific needs, including, but not limited to the following:

- Funding for professional development activities; staff participating in such activities will report to the school and school district about the benefits and lessons learned from such training;
- Technology needs;
- Sabbaticals for teachers or administrators, or both, to pursue additional professional development or educational enrichment;
- Paid professional leave; and
- Training for parents, including, but not limited to, curriculum, Title I, special need students, student rights and responsibility, school and community relations, and effective parenting.

5.0 ACCREDITATION MONITORING PROCEDURES

The MDE continuously monitors school districts to verify compliance with applicable accreditation requirements and state and federal laws.

5.1 ON-SITE EVALUATIONS

The SBE, the State Superintendent of Education, or the CSA has the authority to call for an on-site evaluation or investigation of a school district at any time. If deficiencies are found in meeting accreditation standards or state and/or federal laws, the superintendent is notified in writing and given thirty (30) days from the receipt of notification to provide a written response. The report of findings is filed in the current accreditation records in the Office of Accreditation.

5.2 INVESTIGATIVE EVALUATIONS (COMPLAINTS AGAINST DISTRICTS)

All formal complaints made against schools or districts must be submitted to the Office of Accreditation in writing and bear the signature of the individual(s) filing the complaint. The written complaint shall contain specific details concerning alleged violations.

5.2.1 Areas Over Which the Commission On School Accreditation Has No Authority

If the complaint addresses an area over which the CSA has no authority, the individual filing the complaint is acknowledged and the complaint is filed in the Office of Accreditation.

5.2.2 Areas Over Which the Commission On School Accreditation Does Have Authority

If the complaint addresses an area over which the CSA does have authority, the superintendent may be notified in writing of the nature of the complaint and given thirty (30) days to provide a written response to the allegations and to present documentation of compliance. The superintendent may also be notified that the District is subject to an unannounced audit to investigate the allegations.

5.2.3 Unannounced On-Site Investigative Evaluations

The SBE, the State Superintendent of Education, or the CSA has the authority to call for an on-site evaluation or investigation of a school district at any time. Procedures for conducting investigative audits are as follows:

5.2.3.1 The auditors may arrive in the district without prior notification.

5.2.3.2 The auditor(s) inform the superintendent of the purpose of the audit and of the procedures to be followed.

5.2.3.3 The auditor(s) discuss procedures with the principal of the school if appropriate.

5.2.3.4 The auditor(s) may use various methods to collect the data needed to verify or discredit the complaint, including examination of official records, anonymous surveys, and interviews with school personnel, and observations.

5.2.3.5 Upon completion of the audit, the auditor(s) compile a written report that is sent to the superintendent and the chairman of the school board.

5.3 SPECIAL TEST AUDITS

Reports regarding potential testing irregularities or test security violations are referred to the Office of Student Assessment. Such reports include statistical analyses of test data conducted after each test administration, self-reported incidents, third-party allegations regarding violations of testing requirements, and irregularities noted during test security audits. Regular test security audits may be conducted prior to, during, and following each test administration in order to promote the integrity and security of the Mississippi Assessment System. The Office of Student Assessment will report to the Office of Accreditation each testing irregularity that has been verified as a violation of a testing requirement.

5.3.1 Self-reports or third-party allegations regarding testing irregularities may be either formal written reports (signed or unsigned) or verbal reports or complaints that may be made officially or anonymously and with or without documentary evidence.

5.3.2 If a third-party allegation addresses an area over which the SBE has no authority, the individual filing the allegation will be notified.

5.3.3 A self-report or allegation must identify specific details concerning alleged violations of test security and/or testing irregularities in order to warrant an investigative audit.

5.3.4 Any statistical analysis that indicates a potential testing irregularity or test security violation will be reviewed and evaluated by staff in the Office of Student Assessment. If the review and evaluation of the statistical analysis indicate that further information is required in order to resolve or confirm the testing irregularity, the Office of Student Assessment may require that a school district investigate the potential irregularity and report its findings to the Office of Student Assessment. Any verified testing irregularity is reported to the Office of Accreditation for appropriate action.

5.3.5 Procedures for test security audits are as follows:

5.3.5.1 The auditor may arrive at the school without prior notification.

5.3.5.2 The auditor informs the school administrator of the purpose of the audit and of the procedures to be followed.

5.3.5.3 The auditor requests that the superintendent be notified that a test audit is in progress.

5.3.5.4 The auditor uses the same methods to collect data as described in policy.

5.3.5.5 The auditor reports the audit findings to the Office of Student Assessment. If the audit findings indicate that a testing irregularity has occurred, the Office of Student Assessment will notify the district superintendent. If the response from the superintendent does not resolve the irregularity, the irregularity is reported to the Office of Accreditation for appropriate action.

5.4 SUMMER PROGRAM AUDITS

Each school district providing educational programs during the summer is required to report summer program data, including types of instructional programs provided, staffing, and enrollment. School districts offering summer programs may be audited to verify information contained in the annual Summer School/Extended Year Report.

5.5 OTHER STATE/FEDERAL PROGRAM AUDITS/EVALUATIONS

When audits or evaluations of other state or federal programs reveal verified noncompliance with state or federal program regulations, the incidents of noncompliance are filed with the Office of Accreditation and placed on the district's Accreditation Record.

5.6 ANALYSIS AND VERIFICATION OF ACCREDITATION INFORMATION

Accreditation staff in the MDE review annual personnel/accreditation information and other annual reports submitted by school districts. Staff will analyze and compare this information with any other accreditation data on record and notify responsible officials of any inconsistency in reporting or any apparent deficiency in meeting standards. Any information submitted by a school district may be verified through on-site visits. Upon request, the school district must provide documentation necessary to validate compliance with accreditation requirements.

6.0 HEARING AND APPEAL PROCEDURES

All controversies involving the accreditation of schools or school districts are initially heard by a duly authorized representative of the CSA before whom a complete record is made.

6.1 REQUEST FOR HEARING

The school board of a school district may request a hearing by filing written notice with the executive secretary of the CSA within ten (10) calendar days of the written notification of the recommended CSA action.

6.2 AUTHORIZED REPRESENTATIVE OF THE COMMISSION

Upon receipt of the written request for hearing from the school board, the chairman of the CSA assigns, in writing, a duly authorized representative previously appointed by the CSA to hear the controversy.

6.3 HEARING PROCEDURES

6.3.1 The CSA's representative sets the time, place, and date for a hearing and notifies all parties of the time, place, and date of the hearing by registered or certified mail, return receipt requested. All parties may be represented by counsel at the expense of the party. The hearing is conducted in such a manner as to afford all parties a fair and reasonable opportunity to present witnesses and other evidence pertinent to the issues and to cross-examine witnesses presented by the opposing party. The CSA's representative may permit any portion of the evidence to be submitted in the form of depositions or affidavits; and in case affidavits are received, an opportunity to present counter-affidavits is provided.

6.3.2 It is the responsibility of each party at the hearing to secure the attendance of such witness or witnesses as the party deems necessary or appropriate, and any expense connected with the attendance of such witnesses is borne by the party responsible for the attendance of the witness.

6.3.3 In conducting the hearing, the CSA's representative is not bound by common law or by statutory rules of evidence or by technical or formal rules of procedure, provided, however, hearsay evidence, if admitted, is not the sole basis for the determination of facts by the CSA's representative.

6.3.4 After presentation by the executive secretary of the CSA regarding recommended action and policy in support thereof, the party filing the written notice of hearing has the burden of going forward with the evidence, and at the conclusion of the hearing, the CSA's representative grants any party the opportunity to present a statement in such party's own behalf, either in person or by such party's attorney.

6.3.5 All hearings held before the CSA's representative are recorded and transcribed by a court reporter whose fees and costs of transcription are paid by the school district involved within forty-five (45) days after having been notified of such costs and fees by the CSA. Within thirty (30) calendar days of receipt of the transcribed record of the hearing, the CSA's representative files a written recommendation to the CSA as to the resolution of the controversies. Upon consideration of the transcribed record and recommendation of its representative, the CSA makes its decision and notifies all parties in writing by certified or registered mail, return receipt requested. The decision of the CSA is final unless the school board of the school district involved elects to appeal to the SBE. The school board of the school district may appeal to the SBE by filing a written notice of appeal with the State Superintendent of Education within fifteen (15) calendar days of receipt of the decision of the CSA.

6.4 APPEAL PROCEDURES

6.4.1 An appeal to the SBE is on the record previously made before the CSA's representative or the CSA.

6.4.2 Upon receipt of the transcript, the SBE, through the State Superintendent of Education, notifies the parties involved that the transcript has been filed and that the appealing party has fifteen (15) calendar days to file any written argument not to exceed twenty-five (25) pages in length. The CSA is allowed thirty (30) calendar days from the filing of the transcript with the SBE to file a responsive written argument not to exceed twenty-five (25) pages in length. Any written argument in rebuttal by the appealing party must be filed within forty (40) calendar days of the filing of the transcript. The appealing party may not exceed twenty-five (25) pages as the combined total for its original and rebuttal arguments. An original and nine (9) copies of the written argument must be provided. The SBE considers all appeals within thirty (30) calendar days of the last written argument filed. The written decision of the SBE is transmitted to the parties involved within fifteen (15) calendar days of its decision.

7.0 ANNUAL REPORT

By November 1 of each year, each local school district shall be required to develop and publish an annual report as prescribed by the SBE. The report shall be published in a newspaper having general circulation in the county and posted on the school district's web site in a printable format. The public notice shall include information on the report's availability on the district's web site, with the web site address, and the location(s) in the school district where a copy of the report can be obtained. {Miss. Code Ann. § 37-3-53 (1) (c)} (7 Miss. Admin. Code Pt. 3, Ch. 18, R. 18.1)

PROCESS STANDARDS

ADMINISTRATION AND PERSONNEL

1. The local school board and the superintendent of schools shall exercise due diligence in performing the respective duties of each office in accordance with applicable law. The local school board's responsibilities shall pertain to matters of setting policy and shall not interfere in the day-to-day operations of the school district that include, but are not limited to, such duties as those relating to personnel and management decisions. Failure to comply shall result in the immediate downgrade of the district's accreditation status to Probation or Withdrawn as indicated in Accreditation Policy 2.5. {Miss. Code Ann. §§ 25-41-1 et al.; § 25-61-1 through 17; § 37-3-4(5); §§ 37-6-7, 9, 11, and 15; §37-7-306(1-4); §§ 37-9-1 through 75; §§ 37-9-101 through 113; §37-7-301(p)(w); § 37-6-3(3-4); § 37-9-7, 13, 14; § 37-61-9; § 37-151-5(h); and *Federal Civil Rights Act of 1964*.}
 - 1.1 The school board assigns all executive and administrative duties to the superintendent, who is properly licensed and chosen in the manner prescribed by law. {Miss. Code Ann. § 37-6-3(3-4); § 37-9-7, 13, 14; § 37-61-9; and § 37-151-5(h)}
 - 1.2 School board policies that comply with state and federal statutes, rules, and regulations serve as the basis of operation for the district, and current copies (print or electronic) of school board policies are published and available for public review. {Miss. Code Ann. § 25-41-7; §§ 25-61-1 through 17; §§ 37-9-1 through 75; §§ 37-9-101 through 113; § 37-7-301(p)(w); and *Federal Civil Rights Act of 1964*.}
 - 1.3 School board members complete required basic and continuing education programs in order to effectively perform their duties in the manner prescribed by law. {Miss. Code Ann. §§ 25-41-1 et. al; §§ 25-61-1 through 17; § 37-3-4(5); § 37-6-7, 9, 11, and 15; and § 37-7-306(1-4)}
2. All district professional positions requiring licensed staff are filled by staff that are properly licensed and endorsed as required by state law and federal requirements of the *Elementary and Secondary Education Act* (ESEA). {Miss. Code Ann. § 37-9-7} (7 Miss. Admin. Code Pt. 3, Ch. 80, R. 80.1, R. 80.2, and ESEA, and Federal Code)
 - 2.1 The school district employs an appropriately licensed full-time principal at each school. The principal may not have any other job duties assigned in areas that require a specific work area code unless a waiver is granted by the Commission on School Accreditation. This standard does not apply to assistant principals. {Miss. Code Ann. § 37-9-7, § 37-9-15, and § 37-151-5(g)}
 - 2.2 With the exception of academic core subjects, the professional staff in each school is comprised of no more than 5% of Full Time Equivalent (FTE) units working outside the area or areas of endorsement. Assistant principals and administrative interns who are not properly endorsed may be included in the 5% FTE working outside their area of endorsement, provided that they do not act in the place of the principal. An appropriate license is required for superintendents, principals, librarians, and guidance counselors.
 - 2.3 The school district employs in each school a licensed librarian or media specialist who devotes no more than one-fourth (¼) of the workday to library/media administrative activities. {Miss. Code Ann. § 37-17-6(3)(a-e)}
 - 2.3.1 If the student enrollment is 499 or less, a half-time licensed librarian or media specialist is required.
 - 2.3.2 If the student enrollment is 500 or more, a full-time licensed librarian or media specialist is required.
 - 2.4 Student support services (appraisal, academic, and/or personal advisement, and educational and/or career planning and referral) are provided in each school by qualified student support personnel. Student support personnel may only provide those services and activities in the area(s) that each individual is specifically qualified to provide and will use only job titles that reflect same. {Miss. Code Ann. § 37-9-79}
 - 2.5 The school district employs a school business officer/administrator whose qualifications meet the criteria established by the Mississippi Department of Education and whose primary job responsibilities

are conducting, supervising, and/or directing the financial affairs and operations of the school district. (7 Miss. Admin. Code Pt. 3, Ch. 71, R. 71.1, R. 71.2)

3. The school district implements an annual, formal personnel appraisal system for licensed staff that includes assessment of employee on-the-job performance. {Miss. Code Ann. § 37-3-46(b)}
 - 3.1 Superintendent Evaluation using the assessment benchmarks established by the Mississippi School Boards Association (MSBA) and consistent with assessment components defined in Miss. Code Ann. § 37-7-301.
 - 3.2 Mississippi Principal Evaluation System (MPES).
 - 3.3 Mississippi Teacher Evaluation System.
 - 3.4 Other district staff evaluations as determined by local school board policy.

4. The local school board obtains an annual financial audit of the school district, as conducted under the guidelines of the Office of the State Auditor, no later than nine months after the end of the district's fiscal year. {Miss. Code Ann. § 7-7-211(e)} (7 Miss. Admin. Code Pt. 3, Ch. 10, R. 10.1) (2 C.F.R. Part 200)
 - 4.1 The most recent annual financial audit report of the school district, as conducted under the guidelines of the Office of the State Auditor, indicates a fixed asset system of accountability that provides verification of fixed assets and fixed assets records. {Miss. Code Ann. § 37-17-6(18)}
 - 4.2 The most recent annual financial audit report of the school district, as conducted under the guidelines of the Office of the State Auditor, indicates no less than a zero fund balance (as defined by generally accepted accounting principles) for all funds of the school district. {Miss. Code Ann. § 37-61-19}
 - 4.3 The most recent annual financial audit report of the school district, as conducted under the guidelines of the Office of the State Auditor, verifies the process for distributing Educational Enhancement Fund procurement cards to all eligible teachers. {Miss. Code Ann. § 37-61-33(3)(iii)} (7 Miss. Admin. Code Pt. 3, Ch. 32, R. 32.1)
 - 4.4 The most recent annual financial audit report of the school district, as conducted under the guidelines of the Office of the State Auditor, indicates an unqualified opinion (as defined by generally accepted auditing standards) on the financial statements of the school district. {Miss. Code Ann. § 37-9-18(2) and § 37-61-29}
 - 4.5 The most recent annual financial audit report of the school district, as conducted under the guidelines of the Office of the State Auditor, verifies the local school board has received, reviewed and discussed, as reflected in official minutes of the regularly scheduled monthly meeting, the financial reports required by state law and/or the State Board of Education. {Miss. Code Ann. § 37-9-18(1), § 37-37-7(2)(e), § 37-37-13} (7 Miss. Admin. Code Pt. 3, Ch. 71, R. 71.3)
 - 4.6 The most recent annual financial audit report of the school district, as conducted under the guidelines of the Office of the State Auditor, verifies the accuracy and timely compilation and reporting of all financial data, including the year-end data provided through the Financial Exchange Transfer System (FETS), required for submission to the MS Department of Education by the fifteenth day of October, each year, in accordance with state law and/or the State Board of Education. {Miss. Code Ann. § 37-37-7(2)(e), § 37-61-21(2), and § 37-37-13}
 - 4.7 The most recent annual financial data of the school district, as submitted to the MS Department of Education, verifies a 7% fund balance of the district maintenance fund. {Miss. Code Ann. § 37-61-8}

5. The most recent annual financial audit report of the school district, as conducted under the guidelines of the Office of the State Auditor, verifies the following:
 - 5.1 The local school board submits the annual budget to the levying authority and the prescribed budgetary information to the MS Department of Education by the fifteenth day of August, each year, in accordance with state law and/or the State Board of Education. {37-61-9(1-3)}
 - 5.2 The local school board budgets and expends funds under the Public School Health Insurance Plan as required by state law and State Board policy. Failure to remit premiums, interest penalties, and/or

late charges in a timely manner may result in withholding a school district's adequate education program funds {Miss. Code Ann. § 37-151-95} (7 Miss. Admin. Code Pt. 3, Ch. 48, R. 48.4)

SCHOOL OPERATIONS

6. The school district complies with state law and State Board of Education policy on enrollment requirements.
 - 6.1 Residency requirements {Miss. Code Ann. § 37-15-29} (7 Miss. Admin. Code Pt. 3, Ch. 68, R. 68.1)
 - 6.2 Immunization requirements {Miss. Code Ann. § 37-7-301(i), § 37-15-1, and § 41-23-37}
 - 6.3 Age of entry requirements {Miss. Code Ann. §37-15-9}
7. Any transfer student from a school or program (correspondence, tutorial, or home study) not accredited regionally or by a state board of education [or its designee(s)] is given either a standardized achievement test(s) or teacher-made special subject test(s) to determine the appropriate classification of the student within thirty (30) days after filing for transfer. Notice of the administering of such test(s) shall be given to the applicant not less than five (5) days prior to the date of the administration of such test. {Miss. Code Ann. § 37-15-33} (7 Miss. Admin. Code Pt. 3, Ch. 36, R. 36.1, R. 36.2, R. 36.3, R. 36.4)
8. Permanent records and cumulative folders for individual students contain all required data and are collected, maintained, and disseminated in compliance with state law, the *Family Educational Rights and Privacy Act of 1974*, and the Confidentiality Section of the *Individuals with Disabilities Act, 1997* Amendments. (See Appendix E and the current edition of the *Mississippi Cumulative Folders and Permanent Records Manual of Directions*.) {Miss. Code Ann. §§ 37-15-1 through 3; § 37-15-6; § 37-15-10}
9. The school district engages in planning to review the educational status of each school in the district and to address specific actions relative to accreditation and performance separately. {Miss. Code Ann. § 37-3-49(2)(e)}
10. The school district implements procedures for monitoring and reporting student absences as specified in the Mississippi Compulsory Attendance Law. {Miss. Code Ann. § 37-13-91} (7 Miss. Admin. Code Pt. 3, Ch. 30, R. 30.1, R. 30.2)
 - 10.1 The most recent annual audit report of the school district, as conducted under the guidelines of the State Auditor's Office, verifies the accuracy, validity, and timely reporting of all student data submitted to the MDE, including, but not limited to, the electronic transmission of student enrollment, attendance, transportation, absenteeism, graduation, dropouts, and any other student data and administrative functions as deemed necessary. {Miss. Code Ann. § 37-37-7(2)(b)(c)(d) and § 37-37-13}
11. The school district shall develop and implement a program designed to keep students in school and to lower student dropout rates.{Miss. Code Ann. § 37-13-80} (7 Miss. Admin. Code Pt. 3, Ch. 30, R. 30.5)
12. There is an organized system to encourage community involvement, parental communication, and business partnerships in school district decision-making. {Miss. Code Ann. § 37-7-337} (Districts Meeting the Highest Levels of Performance are exempted.)
 - 12.1 A school district that has been designated as Failing (F) as defined by the State Board of Education shall establish a community-based pre-kindergarten through higher education (P-16) council. {Miss. Code Ann. § 37-18-5(4)}
 - 12.2 A district and/or a school designated as a D or F shall establish a community-based pre-kindergarten through higher education (P-16) council.
13. The academic year provides a minimum of 180 teaching days in which both teachers and pupils are in regular attendance for scheduled classroom instruction. Any request for an exception to this standard must be submitted in writing to the Commission on School Accreditation for review and action. If the Governor has declared a disaster emergency or the President of the United States has declared an emergency or major

disaster to exist in this state, the local school board may request approval from the State Board of Education to operate the schools in its district for less than one hundred eighty (180) days. {Miss. Code Ann. § 37-151-7(3)(d)} {Miss. Code Ann. § 37-3-49, §§ 37-13-61 through 69, § 37-151-5(j), and § 37-151-7(3)(c)}

- 13.1 The teaching day must provide at least 330 minutes of instruction per day. {Miss. Code Ann. 37-13-67}
 - 13.2 The school district must ensure that during the academic school year a minimum of 140 hours of instruction is provided for each Carnegie unit of credit offered and 70 hours for each one-half (½) unit offered, except for remedial instructional programs, dual enrollment/dual credit, correspondence courses, MS Virtual Public School courses, and innovative programs authorized by the State Board of Education.
 - 13.3 No more than two (2) of the 180 days may be 60% days. Both teachers and pupils must be in attendance for not less than 60% of the normal school day. {Miss. Code Ann. § 37-151-5(j)}
 - 13.4 The school district schedules preparation for graduation ceremonies in such manner that graduating seniors are absent from classes for no more than three (3) days prior to the end of the school year. (Districts Meeting the Highest Levels of Performance are exempted.)
 - 13.5 The summer school/extended year program [not Extended School Year (ESY) provided through special education programs] meets all applicable requirements of the regular school program. {Miss. Code Ann. § 37-3-49}
 - 13.5.1 Students from other schools enrolled in summer programs provide written approval from the principal of their home schools.
 - 13.5.2 Students enrolled in an extended year program complete all remaining course/subject requirements/objectives before credit for the course/subject is issued. {Miss. Code Ann. § 37-3-49}
 - 13.5.3 Students enrolled in a summer program are limited to earning one (1) Carnegie unit of credit during a traditional summer school session, which does not apply to extended year programs and approved virtual courses. (Districts Meeting the Highest Levels of Performance may be exempted under {Miss. Code Ann. § 37-17-11}
14. The school district requires each student, in order to receive a high school diploma, to have met the requirements established by its local board of education and by the State Board of Education. {Miss. Code Ann. § 37-16-7} (7 Miss. Admin. Code Pt. 3, Ch. 36, R. 36.2, R. 36.3, R. 36.4, 36.5)
- 14.1 Each student receiving a standard high school diploma has earned the minimum number of Carnegie units as specified in Appendix A. (See Appendix A.) (7 Miss. Admin. Code Pt. 3, Ch. 28, R. 28.2, R. 28.3) Students receiving a standard diploma may select from four (4) graduation pathways as specified by the local school district's graduation requirements.
 - 14.1.1 Entering ninth graders in 2005-2006 and thereafter (seniors of school year 2008-2009 and later) are required to have a minimum of 21 Carnegie units as specified in Appendix A-1.
 - 14.1.2 Entering ninth graders in 2008-2009 and thereafter (seniors of school year 2011-2012 and later) are required to have a minimum of 24 Carnegie units as specified in Appendix A-2, unless, in accordance with school board policy, their parent/guardian requests to opt the student out of Appendix A-2 requirements. This student would be required to complete the graduation requirements specified in A-1.
 - 14.1.3 Entering eleventh graders in 2010-2011 and thereafter (seniors of school year 2011-2012 and later) who chose the Career Pathway Option are required to earn the minimum graduation requirements specified in Appendix A-3. {Miss. Code Ann. § 37-16-17}
 - 14.1.4 Beginning in school year 2011-2012, all eighth grade students are required to have an Individualized Career and Academic Plan (iCAP) prior to exiting the eighth grade.
 - 14.1.5 Innovative Programs
 - 14.1.6 Early Exit Diplomas
 - 14.2 Each student receiving a standard diploma has achieved a passing score on each of the required high school exit examinations. {Miss. Code Ann. § 37-16-7} (7 Miss. Admin. Code Pt. 3, Ch. 34, R. 34.1, Ch. 36, R. 36.1, R. 36.3, R. 36.4)

- 14.3 Each student who has completed the secondary curriculum for special education may be issued a special diploma or certificate of completion, which states: "This student has successfully completed an Individualized Education Program." {Miss. Code Ann. § 37-16-11(1)}
- 14.4 Each student with disabilities receiving a Mississippi Occupational Diploma has successfully completed all minimum requirements established by the State Board of Education. {Miss. Code Ann. § 37-16-11(2)} (See Appendix G.)
- 14.5 The student who fails to meet the graduation requirements is not permitted to participate in the graduation exercises.

Note: Students enrolled in grades 7 – 12 may be awarded a Carnegie unit credit provided the course content is a Carnegie unit bearing course in the current edition of the Approved Courses for the Secondary Schools of Mississippi Manual.

- 15. The school district implements a professional development program aligned with the Learning Forward Standards for Professional Learning. (Districts Meeting the Highest Levels of Performance are exempted.) {Miss. Code Ann. § 37-17-8} (7 Miss. Admin. Code Pt. 3, Ch. 44, R. 44.1)
- 16. The school district adheres to all requirements of the Mississippi Statewide Assessment System. (See Appendix F.) {Miss. Code Ann. §§ 37-16-1 through 4 and § 37-16-9} (7 Miss. Admin. Code Pt. 3, Ch. 34, Ch. 36, R. 36.1, Ch. 74, R. 74.20, Ch. 78, R. 78.1, R. 78.7)

INSTRUCTIONAL PRACTICES

- 17. The school district is in compliance with state and/or federal requirements for the following programs:
 - 17.1 Early Childhood Programs (kindergarten and teacher assistant) {Miss. Code Ann. § 37-21-1, et seq.} (7 Miss. Admin. Code Pt. 3, Ch. 42, R. 42.1, Ch. 62, R. 62.6) (Refer to the *Mississippi Kindergarten Guidelines*.) [Districts Meeting the Highest Levels of Performance are exempted from provisions of subsection (4) of Miss. Code Ann. § 37-21-7.]
 - 17.2 Pre-Kindergarten {Miss. Code Ann. § 37-7-301(ss)} (7 Miss. Admin. Code Pt. 3, Ch. 28, R. 28.4) (Refer to the *Mississippi Early Learning Guidelines*.) {Miss. Code Ann. § 37-7-301 (zz)}
 - 17.3 Career-Technical Education {Miss. Code Ann. § 37-31-1, et seq.} (7 Miss. Admin. Code Pt. 3, Ch. 83, Ch. 84, Ch. 85, Ch. 86, Ch. 87, Ch. 88, R. Ch. 89, Ch. 90, Ch. 91, Ch. 92, Ch. 93, Ch. 94, Ch. 95, Ch. 96, and Federal Code)
 - 17.4 Special Education {Miss. Code Ann. § 37-23-1 through § 37-23-9} (7 Miss. Admin. Code Pt. 3, Ch. 74, R. 74.1, R. 74.3, R. 74.4, R. 74.5, R. 74.6, R. 74.8, R. 74.10, R. 74.11, R. 74.12, R. 74.13, R. 74.14, R. 74.19, and Federal Code) [See State Policies Regarding Children with Disabilities under the Individuals with Disabilities Education Act of 2004 (IDEA 2004)]
 - 17.5 Child Nutrition {Miss. Code Ann. § 37-11-7} (7 Miss. Admin. Code Pt. 3, Ch. 17, R. 17.1, R. 17.2, R. 17.4, R. 17.7, R. 17.9, and Federal Code)
 - 17.5.1 School Wellness Policy
 - 17.6 Elementary and Secondary Education Act: Titles I, II, III, IV, V, VI, X, and any other federally funded programs and grants (7 Miss. Admin. Code Pt. 3, Ch. 80, R. 80.1, R. 80.2, R. 80.3 and Federal Code)
 - 17.7 Driver Education {Miss. Code Ann. § 37-25-1, et seq.} (7 Miss. Admin. Code Pt. 3, Ch. 29, R. 29.1)
 - 17.8 Gifted Education {Miss. Code Ann. §§ 37-23-171 through 181} (7 Miss. Admin. Code Pt. 3, Ch. 35, R. 35.1) (Refer to the current edition of the *Regulations for Gifted Education Programs in Mississippi* and the *Gifted Education Program Standards*.)
- 18. Each school has a library media center. Refer to the current edition of the Mississippi School Library Media Guide. {Miss. Code Ann. §§ 37-17-6(3)(a-e)}
 - 18.1 Each school has a library media center with an organized collection of materials and equipment that represents a broad range of current learning media, including instructional technology (Accreditation Policy 4.2.1 - Exemptions for Schools Meeting the Highest Levels of Performance).

- 18.2 The library staff offers a systematic program of service to students and staff by providing access to the materials and equipment, by providing instruction in the use of the materials and equipment, and by working with teachers and other staff members to provide learning activities for the students (Accreditation Policy 4.2.1 - Exemptions for Schools Meeting the Highest Levels of Performance).
19. The school district is in compliance with state law and State Board of Education policies for state adopted textbooks. {Miss. Code Ann. § 37-43-1, § 37-43-24, § 37-43-31(2), § 37-43-51, § 37-9-14(2)(b), and § 37-7-301(ff)} (7 Miss. Admin. Code Pt. 3, Ch. 79, R. 79.1, R. 79.2) (Refer to the current edition of the *Textbook Administration Handbook Rules and Regulations*.)
- 19.1 Each school district provides students in each school with access to current or otherwise appropriate textbooks that are in good condition. (See glossary for definition of textbook.) {Miss. Code Ann. § 37-43-1, § 37-9-14(2)(b), and § 37-7-301(ff)}
- 19.2 Each school district shall keep an active and surplus inventory for each school in the district to be completed by June 15 of each year. The district shall report the inventory in the Textbook Inventory Management System. {Miss. Code Ann. § 37-43-51} (Refer to the current edition of the *Textbook Administration Handbook Rules and Regulations*.)
20. The school district meets the following instructional management requirements {Miss. Code Ann. §§ 37-3-49(2)(a-c) and 37-3-49(5)} (7 Miss. Admin. Code Pt. 3, Ch. 41, R. 41.1):
- 20.1 The school district implements an instructional management system that has been adopted by the school board and includes, at a minimum, the competencies and objectives required in the curriculum frameworks approved by the State Board of Education that are available to all teachers in each school. (Districts Meeting the Highest Levels of Performance are exempted.)
- 20.2 The instructional management system includes a tiered instructional model in accordance with (7 Miss. Admin. Code Pt. 3, Ch. 41, R. 41.1), including academic interventions, behavioral interventions, and *Literacy-Based Promotion Act* requirements.
21. The district follows an established board policy that defines criteria for the academic promotion/progression/retention of students. Such criteria prohibit the retention of students for extracurricular purposes.
- 21.1 The school district implements a uniform grading policy. (7 Miss. Admin. Code Pt. 3, Ch. 2, R. 2.3) {Miss. Code Ann. § 37-11-64 and § 37-11-66}
- 21.2 A student who is enrolled in any grade higher than Grade 6 in a school district must be suspended from participation in any extracurricular or athletic activity sponsored or sanctioned by the school district after a semester in which the student's cumulative grade point average is below 2.0 on a 4.0 scale in accordance with the Mississippi High School Activities Association (MHSAA). This portion of the standard will be jointly monitored and enforced by the State Board of Education and the MHSAA. {Miss. Code Ann. § 37-11-65}
22. The school district provides access to an alternative education program that meets the program guidelines outlined in Miss. Code Ann. § 37-13-92 and the guidelines established by the State Board of Education. (7 Miss. Admin. Code Pt. 3, Ch. 7, R. 7.1) (See guidelines for Alternative/GED School Programs.)
23. The school district, in its discretion, may provide access to a GED Option program that meets the program guidelines outlined in Miss. Code Ann. § 37-13-92(4) and the guidelines established by the State Board of Education. (7 Miss. Admin. Code Pt. 3, Ch. 7, R. 7.2) (See guidelines for Alternative/GED Programs.)
24. Each classroom teacher, excluding career-technical teachers whose class periods exceed 50 minutes, has an unencumbered period of time during the teaching day to be used for individual or departmental planning.
- 24.1 If the school utilizes a traditional six-period or seven-period day schedule, the instructional planning time provided for secondary teachers is a minimum of 225 minutes per week, exclusive of lunch

- period. If the school utilizes any form of a modular/block schedule, the instructional planning time provided is a minimum of either 225 minutes per week or an average of 225 minutes per week per instructional cycle, exclusive of lunch period.
- 24.2 Instructional planning time for the elementary school teacher is no less than 150 minutes per week, exclusive of lunch period.
25. Individual teachers (grades 9-12) are limited to three (3) course preparations per scheduling cycle or five (5) in the same subject/content area. Any request for an exception must be submitted in writing to the Commission on School Accreditation for review and action.
26. The curriculum of each high school at a minimum consists of required and approved courses that generate at least 32½ Carnegie units annually. Any request for an exemption from teaching the courses listed in Appendix B must be submitted in writing to the Commission on School Accreditation for review and action. (See Appendices B and C) {Miss. Code Ann. § 37-1-3(2)} (7 Miss. Admin. Code Pt. 3, Ch. 28, R. 28.2, R. 28.3)
27. The curriculum of each elementary or middle school (any configuration of grades K-8) at a minimum consists of reading/language arts, mathematics, science, social studies, the arts, health education, and physical education, which may be taught by a regular classroom teacher. {Miss. Code Ann. § 37-1-3(2) and § 37-13-134}
- 27.1 In any configuration of grades K-8, the curriculum must include 150 minutes of activity-based instruction per week and 45 minutes of instruction in health education per week.
- 27.2 Implementation of the activity-based instruction must meet or exceed the standards as approved by the State Board of Education.
- 27.3 A regular classroom teacher may provide instruction in the arts, health education, and physical education in a self-contained classroom setting.
28. Student teacher ratios do not exceed the following: {Miss. Code Ann. § 37-151-77}
- 28.1 Student teacher ratios do not exceed 22 to 1 in kindergarten, except in instances in which a full-time assistant teacher is in the classroom. If a full-time assistant teacher is employed, 27 may be enrolled. {Miss. Code Ann. § 37-151-77} (See Mississippi Kindergarten Guidelines.) (7 Miss. Admin. Code Pt. 3, Ch. 19, R. 19.1)
- 28.2 Student teacher ratios do not exceed 27 to 1 in classrooms serving grades 1 through 4 unless approved by the State Board of Education. (Schools Meeting the Highest Levels of Performance are exempted.) {Miss. Code Ann. § 37-151-77} (7 Miss. Admin. Code Pt. 3, Ch. 19, R. 19.1)
- 28.3 Student teacher ratios do not exceed 30 to 1 in self-contained classes serving grades 5-8. {Miss. Code Ann. § 37-151-77} A one-year waiver may be requested for classes that do not exceed more than two (2) students beyond the allowable student teacher ratio.
- 28.4 Student teacher ratios do not exceed 33 to 1 in departmentalized academic core classes serving grades 5-12. {Miss. Code Ann. § 37-151-77} A one-year waiver may be requested for classes that do not exceed more than two (2) students beyond the allowable student teacher ratio.
- 28.5 The total number of students taught by an individual teacher in academic core subjects at any time during the school year shall not exceed 150. A teacher who provides instruction through intra-district or inter-district distance learning or supervises students taking virtual courses will be exempt from the 150-student limitation. A lab facilitator or principal designee will be responsible for the assignment of grades and related activities at the receiving school. (Schools Meeting the Highest Levels of Performance are exempted.)

SAFE AND HEALTHY SCHOOLS

29. The school district complies with the applicable policies of the State Board of Education and state and federal laws in the operation of its transportation program. The school district implements Nathan's Law as a priority for promoting school bus safety. {Miss. Code Ann. §§ 37-41-53, 63-3-615, 63-1-73, 97-3-7, and 63-1-33} (7 Miss. Admin. Code Pt. 3, Ch. 81, R. 81.3, R. 81.4, R. 81.6, R. 81.7, R. 81.9)
- 29.1 All buses are inspected on a quarterly basis and are well-maintained and clean. (7 Miss. Admin. Code Pt. 3, Ch. 81, R. 81.9)

- 29.2 Each bus driver has a valid bus driver certificate and a commercial driver's license and operates the bus according to all specified safety procedures. The school district has on file a yearly motor vehicle report on each driver and evidence that each driver has received two (2) hours of in-service training per semester. {Miss. Code Ann. § 63-3-615} (7 Miss. Admin. Code Pt. 3, Ch. 81, R. 81.3, R. 81.6)
 - 29.3 Bus schedules ensure arrival of all buses at their designated school sites prior to the start of the instructional day.
 - 29.4 Emergency bus evacuation drills are conducted at least two (2) times each year. (7 Miss. Admin. Code Pt. 3, Ch. 81, R. 81.4)
- 30. The school district provides clean and sanitary facilities in a safe and secure environment. All classrooms in each school will be air conditioned. {Miss. Code Ann. §§ 37-7-301(c) (d) and (j); § 37-11-5, § 37-11-49; and § 45-11-101}
 - 31. The school district complies with State Board Policies and State and Federal laws to provide Safe Schools. Each school has a comprehensive School Safety Plan on file that has been approved annually by the local school board. {Miss. Code Ann. § 37-3-81, § 37-3-82, § 37-3-83, § 37-7-321, § 37-11-5, § 37-11-29, § 37-11-53, § 37-11-67, and § 37-11-69, the *Mississippi School Safety Manual* and the *MDE Occupational Safety and Crisis Response Planning Manual*.
 - 32. The school district complies with state statute and State Board of Education policy for education of juveniles in youth detention centers.
 - 32.1 Educational requirements Miss. Code Ann. § 42-21-321} (7 Miss. Admin. Code Pt. 3, Ch. 30, R. 30.6)
 - 32.2 Financial reimbursement requirements (7 Miss. Admin. Code Pt. 3, Ch. 30, R. 30.6) (Refer to the current edition of the *Guidebook for Educating Juveniles in Detention Centers*)

PERFORMANCE STANDARDS

INTRODUCTION

The accountability system is designed to improve student achievement and increase the level of accountability for both school districts and individual schools. The accountability model focuses on student achievement at each school and at the district level. Performance standards have been established, and student assessment data from the statewide assessment program will be used to determine individual school performance classifications and district level performance classifications.

The following specifications for establishing school and district performance standards and accountability requirements are addressed in Miss. Code Ann. §37-17-6(5), §§ 37-18-1 through 37-18-7.

The State Board of Education (SBE) shall establish, design, and implement a program for identifying and rewarding public schools that improve. Upon full implementation of the statewide testing program, the State Board of Education shall apply an "A," "B," "C," "D," and "F" designation to the school and school district statewide accountability performance classification labels addressed in Miss. Code Ann. §37-17-6(5).

A school shall be identified as a School At-Risk and in need of assistance if the school:

- (a) Does not meet its growth expectation and has a percentage of students functioning below grade level, as designated by the State Board of Education;
- (b) Is designated as a Level 1 School, or other future comparable performance designation by the State Board of Education; or
- (c) Is designated as a Level 2 School, or other future comparable performance designation by the State Board of Education, for two (2) consecutive years.

Note: Miss. Code Ann. § 37-17-6, as amended in 2013, includes the following definitions for Proficiency and Growth: The State Department of Education shall establish five (5) performance categories ("A," "B," "C," "D," and "F") for the accountability system based on the following criteria:

- (i) Student Achievement: the percent of students proficient and advanced on the current state assessments
- (ii) Individual Student Growth: the percent of students making one (1) year's progress in one (1) year's time on the state assessment, with an emphasis on the progress of the lowest twenty-five percent (25%) of students in the school or district

INCLUSION OF STUDENTS WITH DISABILITIES AND ENGLISH LEARNERS (EL)

The Mississippi Statewide Assessment System provides procedures to ensure the inclusion of all students in the assessment programs, including a wide range of testing accommodations, instructional level testing on the MCT2 (2013-2014), PARCC (2014-2015), MAP (2015-2016), SATP2, and alternate assessments. The data for students using testing accommodations are treated no differently from any other test data. The scores for students with disabilities taking alternate assessments are included in the achievement and growth components. The weighting procedures in the achievement component ensure that those students count equally within the achievement level assigned to the school.

School districts are allowed to exclude the academic achievement results only for first-year English Learners (EL) students (on a case-by-case basis) from determinations of Mississippi Statewide Accountability System results, consistent with the requirements for ESEA federal accountability.

MISSISSIPPI STATEWIDE ACCOUNTABILITY SYSTEM, EFFECTIVE 2013-2014

Beginning with the 2013-2014 school year, accountability labels will be assigned based on the following school grading assignments:

Schools (and Districts) with no 12th grade will have seven (7) components, each worth 100 points, totaling 700 possible points:

1. Reading Proficiency
2. Reading Growth – All Students
3. Reading Growth – Lowest Performing Students
4. Math Proficiency
5. Math Growth – All Students
6. Math Growth – Lowest Performing Students
7. Science Proficiency

For schools (and districts) with a grade 12, the following schedule will be used:

During the 2013-2014 school year, schools (and districts) with a grade 12 will have 9 components, totaling 900 possible points:

1. Reading Proficiency (100 points)
2. Reading Growth – All Students (100 points)
3. Reading Growth – Lowest Performing Students (100 points)
4. Math Proficiency (100 points)
5. Math Growth – All Students (100 points)
6. Math Growth – Lowest Performing Students (100 points)
7. Science Proficiency (50 points)
8. U.S. History Proficiency (50 points)
9. Graduation Rate – All Students (200 points)

During the 2014-2015 school year, schools (and districts) with a grade 12 will have 9 components, totaling 900 possible points:

1. Reading Proficiency (100 points)
2. Reading Growth – All Students (100 points)
3. Reading Growth – Lowest Performing Students (100 points)
4. Math Proficiency (100 points)
5. Math Growth – All Students (100 points)
6. Math Growth – Lowest Performing Students (100 points)
7. Science Proficiency (50 points)
8. U.S. History Proficiency (50 points)
9. Graduation Rate – All Students (200 points)
10. Deleted

Beginning with the 2015-2016 school year, schools (and districts) with a grade 12 will have 11 components, totaling 1000 possible points:

1. Reading Proficiency (100 points)
2. Reading Growth – All Students (100 points)
3. Reading Growth – Lowest Performing Students (100 points)
4. Math Proficiency (100 points)
5. Math Growth – All Students (100 points)
6. Math Growth – Lowest Performing Students (100 points)
7. Science Proficiency (50 points)
8. U.S. History Proficiency (50 points)
9. Graduation Rate – All Students (200 points)
10. College & Career Readiness (Math 50% and English/Reading 50%) (50 points)

(Note: The CCR component is contingent upon legislative funding.)

11. Acceleration (Participation and Performance Combined) on the following sliding scale:
 - a. Year 1 (2015-2016): Participation - 70%/Performance - 30% (50 points)
 - b. Year 2 (2016-2017): Participation - 60%/Performance - 40% (50 points)
 - c. Year 3 (2017-2018) and beyond: Participation - 50%/Performance - 50% (50 points)

Mississippi Statewide Accountability System: Business Rules

1. Assignment of Grade Classifications

- 1.1 Standards for student, school, and school district performance will be increased when student proficiency is at a seventy-five percent (75%) and/or when sixty-five percent (65%) of schools and/or districts are earning a grade of “B” or higher, in order to raise the standard on performance after targets are met. (Miss. Code Ann. § 37-17-6)
- 1.2 Grades for schools (and districts) with no 12th grade (elementary/middle schools) will be determined based on the following cut-points effective with the 2015 - 2016 school year:

	A	≥	455
385	≤	B	< 455
330	≤	C	< 385
277	≤	D	< 330
	F	<	277

- 1.3 Grades for schools with a 12th grade will be determined based on the following cut-points effective with the 2015 - 2016 school year:

	A	≥	738
626	≤	B	< 738
552	≤	C	< 626
470	≤	D	< 552
	F	<	470

- 1.4 Grades for districts will be determined based on the following cut-points effective with the 2015 - 2016 school year:

	A	≥	672
588	≤	B	< 672
523	≤	C	< 588
464	≤	D	< 523
	F	<	464

- 1.5 Assignment of district grades will be calculated by treating the district as one (1) large school based on the same grading assignments used for schools.
- 1.6 Cut-points for schools/districts will be reviewed following the implementation of a new assessment.

2. Full Academic Year (FAY)

- 2.1 In order for a student to meet Full Academic Year (FAY) and be included in the proficiency and growth calculations, he/she must have been enrolled (regardless of attendance) for at least 75% ($\geq 75\%$) of the days from September 1 (of school year) to the first day of testing. This date will be published yearly by the MDE and will be the same for all schools, students, and assessments. For schools on a traditional school calendar, the date will be in the spring.
Note: 74.5% will not be rounded up to 75%.
 - 2.1.1 Enrollment is defined as enrollment at the school/district level except for students in 4x4 block scheduled courses.
- 2.2 For students in 4x4 block scheduled courses, FAY for the Fall semester will be calculated from September 1 of the school year to the first day of Fall primary test administration. The specific date will be published yearly by MDE. FAY for the Spring semester will be calculated from

February 1 to the first day of Spring testing, the same day as schools using a traditional school calendar. These dates will be published yearly by MDE.

- 2.3 The beginning and ending dates will be included in the calculations. Calculations will be based on calendar days, not instructional days. Weekends and holidays will be included in the calculations.
- 2.4 If a student meets FAY at a school other than the school where he/she is enrolled at the time of testing, his/her scores will count at the school where he/she met FAY.
- 2.5 This definition of FAY will not be applied to students for previous years where a previous definition of FAY was applied. In the event that no FAY was calculated for a student in a previous year, this method will be applied.
- 2.6 FAY will be calculated at the school level as well as at the district level. Therefore, it is possible for a student who transfers within a district to meet FAY for a district and be included in the calculations for the grade assignment for the district but not be included in the calculations for a school. Scores of all students will be included in the state level calculations regardless of FAY status.
- 2.7 If a student enrolls and withdraws in the same or different school on the same day, the student will be considered as having been enrolled for one (1) day in the receiving school.
- 2.8 (Deleted) Rule 2.9 supersedes.
- 2.9 If FAY cannot be calculated or discerned because of incorrect MSIS coding, the student will be forced to meet FAY at the school/district if the movement of the student appears to be within the same school/district.
- 2.10 If a student drops out of school and re-enrolls within the same school year, the re-entry date of the student will be included as the next enrollment date for the student.

3. *N-Count Minimums*

3.1 School Totals

3.1.1 In order for a school to earn a grade, the school must have a minimum of ten (10) valid test scores in each of the required components. Schools that do not have the minimum of ten (10) valid test scores for each of the components but meet the 95% minimum participation requirements, the available data will be reported but the school will not receive a grade. If a school does not meet the minimum of ten (10) valid test scores requirement because they do not meet the 95% minimum participation requirement, the school will receive a grade based on the available data for each component. (See Sections 22 and 24 for exceptions to this rule.)

3.2 Lowest Performing Students Subgroup N-Count Minimums

3.2.1 This subgroup must have a minimum of ten (10) valid test scores. If there are less than ten (<10) students in the Lowest Performing Students subgroup, the subgroup will consist of All students except for the students scoring at the highest achievement level. If this calculation still results in a number less than ten (<10), then ALL students will be included in the calculation of the Lowest Performing Students subgroup.

3.2.2 At the grade-level, a minimum of four (4) students with valid scale scores are required to identify the Lowest Performing Students. If a grade has less than four (<4) students with valid scale scores for the subject, there will be no students identified as being in the Lowest Performing Students for that grade level for that subject.

Note: See Section 7 for more information on the Lowest Performing Students subgroup.

4. *Participation Rates*

- 4.1 If a school/district does not meet the 95% minimum participation rate, the school/district will automatically be dropped a letter grade. Although subgroup participation rates will be reported, this penalty will apply to the overall participation rate only. (A 94.5% participation rate will not be rounded to 95%.)

- 4.2 Elementary schools with no assessments (K, 1, and 2) will not be assigned a participation rate. Therefore, these schools will not be impacted by the participation rate minimum requirements.
- 4.3 Students may be removed from the denominator of testing participation calculations if he/she meets the criteria set forth by the Office of Student Assessment as having a Significant Medical Emergency which made participation in the state testing impossible. For details regarding the definition of Significant Medical Emergency and the process of requesting a student be removed from the calculations, please contact the Office of Student Assessment.
- 4.4 High School participation rates will be calculated based on the Senior Snapshot. Data from all statewide high school level end-of-course assessments required for graduation will be used in the participation calculations.
 - 4.4.1 For the 2013-2014 school year, the Senior Snapshot process used for calculating participation rates in high school level end-of-course assessments will remain consistent with previous years. Beginning with the 2014-2015 school year, U.S. History will be included in the participation rate calculations. (Refer to rule 4.5 for additional clarification.)
- 4.5 Students with significant cognitive disabilities (SCD) with no U.S. History assessment scores will be removed from the denominator for the participation rate calculation for U.S. History.
- 4.6 If and when the ACT assessment becomes a state required assessment, it will be included in the participation rate calculations. (See Section 25.)
- 4.7 If a student is expelled but is still enrolled in MSIS for the school/district during the testing window, he/she will be included in the denominator. If the student does not test, the student will count as “not tested.”

5. Proficiency

- 5.1 Proficiency will be determined by the percentage of students who achieve a performance/proficiency of Proficient and above. No additional credit will be given for students scoring in a performance/proficiency level above proficient (e.g., “Advanced”). No partial credit will be given for students scoring in any performance level below proficient.
 - 5.1.1 For proficiency components worth fifty (50) points, the weighted percentage of students proficient will be multiplied times 0.5 to determine the points applied to the component.
 - 5.1.2 The science proficiency component for schools with a 12th grade will be based on all science assessments administered at that school. Therefore, for schools with a 12th grade that also have a 5th and/or 8th grade, the science component for that school will still be worth fifty (50) points.
- 5.2 Assessments included in the proficiency calculations will consist of all federally-required statewide assessments in Reading/Language Arts/English, Mathematics and Science, and any additional high school level end-of-course assessments required for graduation. This includes all Alternate Assessments based on Alternate Achievement Standards (AA-AAS) for SCD students. (This rule will need to be reviewed with the implementation of any new statewide assessments.)

6. Growth

- 6.1 Growth is determined by whether or not a student increases in performance/proficiency levels from one (1) year to the next based on the following criteria:
 - An increase of ANY performance/proficiency level
 - Staying at the same performance/proficiency that is at or above Proficient from one (1) year to the next
 - An increase within the lowest three (3) performance/proficiency levels that crosses over the mid-point of the level. (Example: Bottom half of Basic to top half of Basic)

Following the implementation of new assessments, a linking/equating process will be used to establish comparable scales across the new and old assessments and to determine the criteria for meeting growth as defined above.

6.2 Additional weight in the numerator is given for the following increases:

- Any increase of two (2) or more performance/proficiency levels will be given a weight = 1.2.
- Any increase to the highest performance/proficiency level will be given a weight = 1.25.
- An increase within the highest performance/proficiency level and any other increase is given a weight = 1.

Note: Because additional weight is given, it is mathematically possible for a school or district's growth value to be greater than 100 points for any/all of the four (4) growth components.

6.3 Any decrease in performance/proficiency levels = 0.

6.4 The lowest three (3) performance/proficiency levels will be split into half at the mid-point of the range. In the event that the range is an odd number and cannot be split into two (2) equal halves, the lower half of the performance/proficiency level will be one (1) point larger than the upper half. (Example: If the range of the performance/proficiency level is thirteen (13) scale score points, the bottom half of the range will be seven (7) scale score points and the upper half of the range will be six (6) scale score points.)

The splitting of the lowest three (3) performance/proficiency levels into half at the mid-point range is not intended to create three (3) new separate performance/proficiency levels. Therefore, students who move from the bottom half of the lowest performance/proficiency level to the bottom half of the second lowest performance/proficiency level will not be given additional weight for increasing two (2) performance/proficiency levels. That student will be considered to have increased one (1) performance/proficiency level.

Note: Rules regarding the splitting of the lowest three (3) performance/proficiency levels are subject to review and change with the implementation of any new assessments.

6.5 Assessments used for calculation of growth will include:

- Grade-level (3-8) assessments in English Language Arts;
- Grade-level (3-8) assessments in Mathematics;
- High School level assessments in English Language Arts;
- High School level assessments in Mathematics;
- Alternate Assessments (3-8 and High School) in English Language Arts; and
- Alternate Assessments (3-8 and High School) in Mathematics.

Note: Growth will not be calculated for Science or U.S. History.

6.6 Students taking Algebra I in 7th or 8th grade are required by Federal regulation to also take the grade-level assessment in mathematics. Therefore, these students will have two (2) growth calculations: grade-level to grade-level and grade-level to Algebra I. The grade-level to grade-level growth calculation will be applied to the current school. The grade-level to Algebra I growth calculation will be banked until the student's 10th grade year.

6.7 To calculate growth for the High Schools for Math-All Students, Math-Lowest Performing Students, Reading-All Students and Reading-Lowest Performing Students, the 8th grade grade-level assessments will be used as the baseline. The exceptions to this are as follows:

- If a student takes Algebra I during his/her 8th grade year, his/her 7th grade grade-level assessments will be used as the baseline and banked until the student is in the 10th grade.
- If a student takes Algebra I in the 7th grade, his/her 6th grade grade-level math assessment will be used as the baseline and banked until the student is in the 10th grade.

6.8 If a student does not have the previous year's grade-level assessment, the student will be excluded from the growth calculation(s) except in the cases of the high school level assessments.

6.9 For students taking high school level assessments in grades lower than 10th grade, growth will be banked until the student's 10th grade year and then applied.

6.10 If a student does not take the required high school level assessments until 11th or 12th grade year, growth will be calculated and applied in the first year he/she has a valid score. The exception to this will be for students taking the alternate assessment. For students taking the alternate assessment, a cap of two (2) years will be applied to the growth calculations.

Therefore, if a student takes the alternate assessment in 8th grade and does not take the high school level alternate assessment until 11th or 12th grade, he/she will not be included in the growth calculations.

- 6.11 Students who are retained in grades 3-8 will have a growth calculation based on the retained grade from the previous year. (Example: A 4th grade student who was retained will have growth calculated based on his/her previous year's 4th grade assessment scores.)
- 6.12 For K-3 schools, growth of 4th grade students in the district will be used for the growth calculations of the K-3 school in which they met FAY. Growth of the 3rd grade students who are retained will be included with the 4th grade student growth calculations.
- 6.13 The student must meet FAY for the current year in order to be included in the growth calculations but is not required to meet FAY for the previous year.
- 6.14 Growth will not be calculated for students who take the Alternate Assessment in the current year but took the grade-level general education assessment the previous year or vice versa.
- 6.15 The denominator for the growth calculation includes any FAY student with two (2) valid assessment scores (as defined above). The numerator will include any student included in the denominator who has demonstrated growth as defined above, and weighted accordingly.
- 6.16 After the implementation of the assessments for the Mississippi College and Career Readiness Standards, if a student comes to Mississippi from another state and has taken the same assessment as the one given in Mississippi, his/her score will be used to calculate growth for the student and the student's growth will be included in the calculations (provided that he/she meets FAY). If the student took an assessment (in another state) that is different from the assessments given in Mississippi, he/she will not have a growth calculation.

7. Lowest Performing Students

- 7.1 Calculation methodology for students whose baseline assessment score is 3rd – 7th grade:
 - 7.1.1 The Lowest Performing Students subgroup in reading and the Lowest Performing Students subgroup in mathematics are determined using the same method but applied separately to reading data and to mathematics data. The procedure used to identify the lowest performing the students in a school is applied separately by grade, and the identified students are combined across all grades to comprise the Lowest Performing Students subgroup and to determine learning gains.

Note: The Lowest Performing Students subgroup will be determined by identifying the percentage (e.g., 25%) of students, as defined by Miss. Code Ann. § 37-17-6, who are the lowest performing students in a given subject area.

The process:

1. Beginning with the 2014-2015 school year, the scores of all students participating in the general education and alternate assessments will be standardized by subject area, grade level, assessment type, and school year.
2. Sort the standardized scores of all FAY students in a grade from highest to lowest based on their prior year standardized scores. Students without an eligible score from the previous year are not included. (See Section 6. Growth and Rule 7.1.3 for additional clarification.)
3. Divide the number of students in the list by four (4).^{*} If the result is not a whole number, then automatically round up to meet the 25% minimum.
4. Count, from the lowest score up, the number of students identified in step 3. Then identify the standardized score that corresponds to that student. This standardized score becomes the boundary score.

* The Mississippi Statewide Accountability System determines 25% of the student population by multiplying the number of students by 0.25.

5. Identify all students with the boundary score determined in step 4. All students with the same boundary score or lower standardized score will be included in the Lowest Performing Students subgroup for that subject/grade.
6. Repeat the process for each grade for the subject then combine students to form the Lowest Performing Students subgroup for the school for the subject.

Note: The number of students in the Lowest Performing Students subgroup must meet the minimum n-count as defined in Section 3.2. If the minimum n-count is not met, the rules outlined in Section 3.2 will be applied. (See Section 3 for more details on N-Count minimums.)

It is possible for the Lowest Performing Students subgroup to be more than 25% when steps 5 and 6 are applied.

7.1.2 Deleted

7.1.3 The Lowest Performing Students subgroup for schools whose highest grade is lower than 4th grade will be identified based on the students who attended the school, not based on their 4th grade school's Lowest Performing Students subgroup. Therefore, a student may be identified in the Lowest Performing Students subgroup in one (1) school, but not the other.

7.2 The Lowest Performing Students subgroup for a district will be identified using the same method described above [i.e., the district will be calculated as if it were one (1) school]. Therefore, it is possible that some students may be identified as members of the Lowest Performing Students subgroup for their school but not for their district, or for their district but not their school.

7.3 The Lowest Performing Students subgroup for the state will be identified using the same method [i.e., the state will be calculated as if it were one (1) school].

7.4 Deleted

8. *Graduation Rate*

8.1 The federally-approved four-year graduation rate will be used. (Miss. Code Ann. § 37-17-6)
 Definition: The number of students who graduate in four (4) years from a school and LEA with a regular high school diploma divided by the number of students who entered four (4) years earlier as first-time 9th graders, with adjustments for deaths, emigration, and transfers in and out. Ninth grade students who repeat 9th grade will stay in their original cohort.

Definition: A "regular high school diploma" is the standard high school diploma that is fully aligned with the state's academic content standards. No exceptions are made for students with disabilities (SCD students or non-SCD students) or students receiving an occupational diploma, GED, certificate of attendance, etc.

8.2 Deleted

8.3 The schools/district graduation rate will be multiplied by 2.0 to calculate the points applied to the graduation component for schools/districts.

8.4 The methodology used for the calculation of the graduation rates for schools/districts are outlined in the *Graduation Rates Technical Manual*.

8.5 The school/district graduation rate applied in the graduation component is lagged one year.

9. *Acceleration*

9.1 Beginning in school year 2015-2016, high schools will have an Acceleration component in their calculations.

9.2 The Acceleration component refers to the percentage of students taking and passing the assessment associated with the accelerated courses such as Advanced Placement (AP), International Baccalaureate (IB), Advanced International Certificate of Education (AICE), or SBE-approved industry certification courses. For students taking dual credit and dual enrollment courses, passing refers to students who are passing the course with a "C" or above. For AP courses, the student must score at least 3 on the AP exam. For IB courses, the student must score at least 4 on the IB exam. For AICE courses, the student must obtain a passing score on the exam. (Passing scores of "A", "B", "C", "D", and "E" on the AICE exams are not based on the

American “A-F” grading scale.) For industry certification courses, the student must pass the exam.

9.2.1 College courses must be credit-bearing courses with a minimum of three (3) semester hours credit and may be in any subject/content area.

9.3 The Acceleration component will consist of a Participation and a Performance component. These two (2) components will be combined for one (1) score worth fifty (50) points and phased in on the following sliding scale:

a. Year 1 (2015-2016): $(\text{Participation-70\%/Performance-30\%}) \div 2$

b. Year 2 (2016-2017): $(\text{Participation-60\%/Performance-40\%}) \div 2$

c. Year 3 (2017-2018) and beyond: $(\text{Participation-50\%/Performance-50\%}) \div 2$

9.4 Calculation of Participation

9.4.1 The numerator for the Participation component calculation will be the number of students taking accelerated courses and/or related exams such as AP, IB, AICE, dual credit, dual enrollment, or industry certification courses based on the definition above.

9.4.2 The denominator for the Participation component calculation shall include all students not identified as Significant Cognitive Disabilities (SCD) students whose Mississippi Student Information System (MSIS) grade or peer-grade equivalent is 11th or 12th grade plus any 9th or 10th grade students who are taking and passing these assessments/courses. (9th and 10th grade students will not be included in the denominator unless they are also included in the numerator.)

9.4.3 Students participating in multiple accelerated courses during the same school year will be given additional weighting in the numerator as follows:

- 2 courses: 1.1
- 3 courses: 1.2
- 4 courses: 1.3
- 5 courses: 1.4

9.5 Calculation of Performance

9.5.1 The numerator for the Performance component calculation will be the number of students taking and passing accelerated assessments/courses such as AP, IB, AICE, dual credit, dual enrollment, or industry certification courses based on the definition above.

9.5.2 The denominator for the Performance component calculation will consist of all students participating in the courses and/or tests identified in the participation calculations.

9.5.3 Students who are enrolled in accelerated courses but do not take the required assessment will be considered as “not proficient” in the performance calculations.

9.6 For students taking and passing multiple courses, the additional weighting used in the participation calculations will be applied.

9.7 In the calculation of participation, students who take an accelerated course during their 11th grade year but do not take an accelerated course during their 12th grade year will be counted in the denominator both years, but in the numerator during their 11th grade year only.

9.8 FAY requirements will not be applied to the participation or proficiency calculations in the Acceleration component.

10. Banking Scores: High school end-of-course assessments taken before 10th grade

10.1 Scores of students taking Algebra I, Biology I, English II, or U.S. History end-of-course assessments in a grade below 10th grade will be “banked” for proficiency/achievement and growth calculations until the student is in the 10th grade and then applied to the student’s 10th grade school (if the student met FAY requirements the year he/she was assessed and during his/her 10th grade year). (See Section 6 for additional clarification on Growth.)

10.2 If a student transfers out of the district before or during their 10th grade year, his/her scores (achievement and growth) will not be applied to the school of origin or receiving school in the new district.

Note: Refer to Section 4 (Participation) and 6 (Growth) for additional information.

11. Focus Schools

- 11.1 Schools identified as “D” or “F” schools for two (2) consecutive years and not identified as “Priority” will be identified as “Focus” schools. (Miss. Code Ann. § 37-17-6)
- 11.2 If at least 10% of the schools in the state are not graded as “D” schools, the lowest 10% of schools, which are not already identified as Priority Schools, will be identified as Focus Schools. (Miss. Code Ann. § 37-17-6)
- 11.3 Beginning with the 2013-2014 grade assignments, any school designated as “Focus” will implement Focus School interventions for a minimum of two (2) years. If the school’s grade level improves, the school will take the higher grade level but continue to be considered as a “Focus School” for federal reporting and will continue to implement the Focus school interventions for the two-year minimum.

12. Priority Schools

- 12.1 Schools identified as “F” schools for two (2) consecutive years will also be identified as “Priority” schools. (Miss. Code Ann. § 37-17-6)
- 12.2 If at least 5% of the schools in the state are not graded as “F” schools, the lowest 5% of school grade point designees will be identified as Priority Schools. (Miss. Code Ann. § 37-17-6)
- 12.3 Beginning with the 2013-2014 grade assignments, any school designated as “Priority” will implement Priority School interventions for a minimum of three (3) years. If the school’s grade level improves, the school will take the higher grade level but continue to be considered as a “Priority School” for federal reporting and will continue to implement the Priority school interventions for the three-year minimum.

13. Reward Schools

- 13.1 Schools identified as “A” schools will also be identified as “Reward” schools. (Miss. Code Ann. § 37-17-6)
 - 13.1.1 Any school also meeting the federal criteria for “Reward-High Progress” or “Reward-High Performing” will be recognized.

14. Annual Measurable Objectives (AMOs)

- 14.1 AMOs will be reported for federal requirements but will not be factored into the calculations for the assigning of A-F accountability labels.
 - 14.1.1 Deleted

15. English Learners (EL)

- 15.1 Scores of English learners (EL) will be included in all calculations (e.g., Proficiency, Growth—All Students, Growth—Lowest Performing Students) UNLESS the district requests that the scores of an English learner who has attended a U.S. school for less than 12 months be excluded. The scores of English learners who have attended a U.S. school for less than 12 months will only be included in the participation calculations. (For more information on English learners who have attended a U.S. school for less than 12 months, contact the Office of Federal Programs.)
 - 15.1.1 Local Education Agencies (LEA) must identify English learner students, who have attended a U.S. school for less than 12 months, to be designated for exclusion on or before February 1, annually. (For more information, contact the Office of Federal Programs.)
 - 15.1.2 Deleted

- 15.1.3 Any English learner student whose scores are excluded based on rule 15.1 will have their score invalidated in the accountability calculations. Therefore, the score will NOT be used the following year as a baseline for any growth calculations.

16. Students with Disabilities

- 16.1 United States Department of Education (ED) regulations limit the number of scores of children taking alternate assessments for students with significant cognitive disabilities (SCD) scoring proficient or above to 1% of the students at the state and district level. This rule does not apply at the school level because these regulations recognize that some schools offer specialized services or are near specialized medical facilities that attract higher numbers of students with significant special needs. Therefore, if a district has >1% of their total population scoring proficient or above on an alternate assessment, the percent above 1% will be adjusted.
- 16.2 All eligible SCD students will be expected to participate in statewide assessments per the schedule provided by the Office of Student Assessment. (This rule will need to be updated and revised with the implementation of any new alternate assessment.)
- 16.3 Non-SCD students are not allowed to participate in alternate assessments. If any such students have alternate assessment data, the test data will be considered not valid.
- 16.4 Students with disabilities will be those students whose SPED indicator in MSIS is "Y" (Yes) at the end of month 8 (closest approximation to the test administration dates).
- 16.4.1 In order for a student to be counted as SCD, his/her SCD indicator and SPED indicator must be set to "Y" (Yes) in MSIS.
- 16.5 Students with disabilities who are coded as "ungraded" (56 or 58) in MSIS will be assigned a peer-grade calculation based on his/her age on September 1 of the current school year.

17. Duplicate Test Scores

- 17.1 If a student takes the general education (grade-level) assessment AND the alternate assessment, the scores from the general education assessment will be used in the school/district accountability calculations.
- 17.2 If MSIS records indicate two (2) valid assessment scores for the same assessment in the same year, the score from the first administration date will be used. In the event that MSIS records indicate two (2) valid assessment scores for the same assessment on the same date, the higher of the two (2) scores will be used in the school/district accountability calculations.

18. Invalid Test Scores

- 18.1 Students with invalid test scores will be counted as "not tested" for participation calculations. The first VALID test score will be used in the proficiency, growth, and participation calculations.
- 18.2 If an invalid score is validated after the accountability calculations are performed and final school/district grade classifications have been assigned, the school/district's grade classifications will not be recalculated and adjusted to reflect the validated score. If during the next year, the student tests again and has a valid test score, that test score, although it was not the student's first test score, will be used during the next year's calculations. Please refer to the Office of Student Assessment regarding deadlines for appealing invalid test scores.
- 18.3 If a student's MSIS grade level (or peer grade level for ungraded students) does not match his/her assessment grade level, the student's scores will not be included in the numerator for participation, growth, or proficiency calculations. (The student will count as not proficient, not meeting growth, and not tested.) Likewise, the student's scores will not be used the following year in growth calculations.
- Note: This rule does not apply to high school end-of-course assessments or high school alternate assessments.

19. Rounding

- 19.1 In the calculation of each of the components in the accountability system that are reported to schools, the final value of each component will be rounded to one (1) decimal place (tenths place). After the components are summed, the total value will be rounded to a whole number and reported for the final grade value calculation.

Example:

Reading Proficiency	80.5
Reading Growth – All Students	80.5
Reading Growth – Lowest Performing Students	80.5
Math Proficiency	80.5
Math Growth – All Students	80.5
Math Growth – Lowest Performing Students	80.5
Science Proficiency	80.5
Total Score	564

Note: Other rounding rules are embedded in the explanations of the specific components.

20. School Reconfigurations or Redrawing of District Lines

- 20.1 A school's accountability calculations will be based on the grade configuration of the school (and the students in that school) on the date that corresponds with the Full Academic Year rules at the time of testing. (See Section 2 for details on Full Academic Year.) The calculations are applied to the school the following year, regardless of any reconfigurations or redistricting that takes place during the summer after testing or during the school year before testing.
- 20.2 Consolidated districts/schools who maintain the same grade configuration and/or student population as existing in the previous school district will receive the eligible scores or statuses of students who previously attended the school in the previous school district.

21. Alternative, Career, Technical, and Vocational Schools

- 21.1 No school grades or differentiated accountability labels will be assigned to alternative, career, technical, and/or vocational schools. Scores of students attending these schools will be included in the school grade of the student's official MSIS home school of enrollment.

22. Schools without Tested Subjects or Grades

22.1 Elementary/Middle Schools

- 22.1.1 Any elementary/middle school that does not have reading or math scores because the school does not have the required grade level, the scores from the students in the next higher grade in the tested subject within the same district will be applied back to the student's lower elementary school of origin. In order for the scores to be applied, the student must meet FAY at the lower grade school, the current school and if there is a gap in years, anywhere in the district for the years in between.

Example 1, Pre-K through 2nd grade School:

- Reading and Math Proficiency - The reading and math scores from students in 3rd grade who attended the Pre-K through 2nd grade school and are still in the same district will be used to calculate the math and reading proficiency for Pre-K through 2nd grade school.
- Science Proficiency - An equating process will be used to adjust the scores for this component.
- Growth - The reading and math scores from students in 4th grade who attended the Pre-K through 2nd grade school and are still in the same district will be used

to calculate the growth for Reading-All Students, Math-All Students, Reading-Lowest Performing Students, and Math-Lowest Performing Students for that Pre-K through 2nd grade school. The students would have to have met FAY in

- the Pre-K through 2nd grade school during 2nd grade,
- the 4th grade school in the same district, and
- any school within the same district during 3rd grade.

Example 2, Pre-K through 3rd Grade:

- Reading and Math Proficiency - The reading and math scores from students in grade 3 at the school will be used to calculate the math and reading proficiency for that school.
- Science Proficiency - An equating process will be used to adjust the scores for this component.
- Growth - The reading and math scores from students in 4th grade who attended the Pre-K through 3rd grade and are still in the same district will be used to calculate the growth for Reading-All Students, Math-All Students, Reading-Lowest Performing Students, and Math-Lowest Performing Students for Pre-K through 3rd grade.
- All applicable FAY rules will apply.

Example 3, Pre-K through 4th Grade:

- Reading and Math Proficiency - The reading and math scores from students in 3rd and 4th grades at the school will be used to calculate the math and reading proficiency for Pre-K through 4th grade.
- Science Proficiency - An equating process will be used to adjust the scores for this component.
- Growth - The reading and math scores from students in 3rd and 4th grades at the school will be used to calculate the growth for Reading-All Students, Math-All Students, Reading-Lowest Performing Students, and Math-Lowest Performing Students for Pre-K through 3rd grade.
- All applicable FAY rules will apply.

Example 4, 6th and 7th grade:

- Reading and Math Proficiency - The reading and math scores from students in 6th and 7th grade at the school will be used to calculate the math and reading proficiency for that 6-7 school.
- Science Proficiency - An equating process will be used to adjust the scores for this component.
- Growth - The reading and math scores from students in 6th and 7th grade at the school will be used to calculate the growth for Reading-All Students, Math-All Students, Reading-Lowest Performing Students, and Math-Lowest Performing Students for 6th and 7th grade.
- All applicable FAY rules will apply.

22.1.2 An equating process to adjust the points required will be used for elementary/middle schools that do not have science scores because the school does not have a 5th or 8th grade.

22.1.3 Beginning with the 2014-2015 school year, the cut-points established for elementary/middle schools that do not have science scores will remain static in succeeding years. The cut-points will be reviewed following the administration of a new assessment.

22.2 High Schools

- 22.2.1 Schools with missing data for components specific to high schools (U.S. History, graduation rates, etc.) will have proxy data (i.e., district average, historical average, etc.) applied if available. If no proxy data is available, an equating process will be used to adjust for the missing components.
- 22.3 Schools with only Pre-Kindergarten and/or Kindergarten will not be assigned a school grade label.

23. State and Other Special Schools

- 23.1 Mississippi School of the Arts (MSA) and Mississippi School for Math and Science (MSMS)
 - 23.1.1 The Mississippi School of the Arts and Mississippi School for Math and Science will not earn grades.
 - 23.1.2 If a student takes a high school end-of-course assessment for the first time while at MSA or MSMS, his/her scores will be sent back to their school/district of origin and rolled into the state totals.
 - 23.1.3 Students enrolled at MSA and/or MSMS during the time of the Senior Snapshot will have their ACT scores sent to their high school of origin.
 - 23.1.4 For students enrolled at MSMS or MSA, the school/district of origin is defined as the school/district where the student was enrolled and met FAY requirements in the school year immediately prior to enrollment at MSMS or MSA.
- 23.2 Mississippi School for the Blind (MSB) and the Mississippi School for the Deaf (MSD)
 - 23.2.1 The Mississippi School for the Blind and the Mississippi School for the Deaf will not earn grades but will have results reported to meet federal regulations. (Minimum N-counts and FAY rules will apply.)
- 23.3 Other State/Special Schools
 - 23.3.1 State agencies (i.e., Hudspeth, Ellisville State School, etc.) will not earn grades.
 - 23.3.2 Students placed in non-public schools (special private schools; i.e., Millcreek, CARES, etc.) but are enrolled in regular Mississippi public schools will have their scores included in the calculations of the school/district in which he/she is enrolled in MSIS.
 - 23.3.3 Students enrolled in schools 200 and 500 have no enrollment and are not used for any of the usual statistical and reporting purposes. If a student is enrolled in a public school during the testing window, he/she would have to be tested (and counted in the testing participation rates) and his/her score (if FAY) would be used for accountability purposes.
- 23.4 Students in Correctional Facilities/Juvenile Justice System
 - 23.4.1 According to the USDE, these facilities are considered “programs” not schools and would not be assigned accountability labels.
 - 23.4.2 If a student, who is still enrolled in MSIS, is in such a program and is not tested, the student will count as “not tested” in the participation rate calculations of the school/district. If the student is tested, his/her scores will count at his/her MSIS resident school.
- 23.5 Virtual Public Schools
 - 23.5.1 Only schools classified under the USDE’s EDEN (Education Data Exchange Network) reporting requirements as a separate school entity will receive a grade.

24. 9th Grade Only Schools

- 24.1 Scores of a 9th grade only school will be combined with the high school to which that school feeds and calculated as one (1) school but reported as two (2) separate schools. In other words,

both schools will earn the same school grade because it will be based on the same data calculations.

25. *College & Career Readiness Indicator*

The following rules will apply only if the state legislature mandates statewide ACT testing and appropriates funding for such testing.

- 25.1 The ACT will be used as the College & Career Readiness Indicator.
- 25.2 The College & Career Readiness component will be comprised of a Mathematics and an English/Reading component. These two (2) components will be equally weighted and combined for one (1) score worth fifty (50) points: $(\text{Math} + \text{English/Reading}) \div 2$
- 25.3 A student will be included in the numerator for Mathematics if he/she is considered College & Career Ready in Mathematics by having a score on the Mathematics component of the ACT at or above the ACT College Readiness Benchmark for the Mathematics component at the time of the student's assessment.
- 25.4 A student will be included in the numerator for English/Reading if he/she is considered College & Career Ready in English/Reading by having a score on the English component of the ACT at or above the ACT College Readiness Benchmark OR if his/her score on the Reading component of the ACT is at or above the ACT College Readiness Benchmark at the time of the student's assessment.

Note: As of September 1, 2013, the ACT College Readiness Benchmarks are as follows: English - 17; Reading - 17; and Mathematics - 17.

- 25.5 Science ACT sub-scores will not be included in the College & Career Readiness component.
- 25.6 ACT Composite scores will not be included in the College & Career Readiness component. (Rationale: ACT does not designate a composite score to indicate college readiness.)
- 25.7 The highest sub-score for each student (at the time of the Senior Snapshot) in Mathematics and English/Reading, as described above, will be used in the College & Career Readiness Indicator accountability calculations.
 - 25.7.1 Students included in the Senior Snapshot will have until February (pending availability of data) of the academic year to participate in the ACT and have their highest subscores in English/Reading and Mathematics included in the College and Career Readiness Component.
- 25.8 Contingent upon legislative funding, the state will pay for one (1) statewide ACT administration to be held in the spring for students classified in MSIS as juniors. Ungraded students whose birthdates link them to the cohort of students identified as juniors will also be included. Students may take the ACT as many additional times as they choose, at their own expense.
- 25.9 Students identified in MSIS as SCD will not be required to participate but may participate if the IEP committee deems it appropriate.
- 25.10 The ACT scores of all students identified in the Senior Snapshot will be included in the calculation except students identified in MSIS as SCD. However, if a student identified in MSIS as SCD takes the ACT, his/her score will be included in the calculations.
- 25.11 A student's score will be applied to the school in which the student is enrolled in MSIS at the time of the Senior Snapshot.
- 25.12 No other assessments will be allowed as a substitution for the ACT in the College & Career Readiness component.
- 25.13 The participation rate numerator will include the state administration or non-state administration of the ACT. The denominator will include all students in the Senior Snapshot.
- 25.14 The denominator for the College and Career Readiness component calculation will consist of all students participating in the ACT as identified in the participation calculations.

26. *Senior Snapshot*

The Senior Snapshot (SS) is a method of identifying high school students for the high school assessment participation rate calculation required by the ED. Because students may take the high school level

assessment at any time during high school to meet federal regulations, MDE uses this method to capture the status of students before the end of their fourth year in high school. The SS captures ALL students who have been enrolled in a MS public school for three (3) years (grades 10-12). If the student does not meet the three-year enrollment criteria, he/she will not be included in the denominator for participation rate calculations.

27. Other

27.1 Deceased Students

27.1.1 Students indicated in MSIS as deceased will not be included in any accountability calculations.

27.2 Foreign Exchange Students

27.2.1 For school year 2013-2014, foreign exchange students will automatically be included in accountability calculations just as any other students. However, if a school/district wishes to have a foreign exchange student excluded from the accountability calculations, the request should be made through the Internal Review Process.

27.2.2 Deleted

**GRADUATION REQUIREMENTS
STANDARD 14**

DISTRICT OPTION

Note: This option may be offered by districts, but it is not required.

Each student graduating from a secondary school in an accredited school district will have earned the required Carnegie units as specified in the following table. Contents of each required and elective course must include the core objectives identified in the *Mississippi Curriculum Frameworks*. Course titles and identification numbers must appear in the current edition of the *Approved Courses for Secondary Schools of Mississippi*. (See 7 Miss. Admin. Code Pt. 3, Ch. 28, R. 28.2, R. 28.3.) Enrollment in online and correspondence courses listed in this book must have prior approval granted by the principal. No more than one (1) of the minimum required number of units may be earned through completion of an approved correspondence course.

Any student who completes the minimum graduation requirements as specified below and has achieved a passing score on each of the required high school exit examinations is eligible to receive a high school diploma. The local school district may establish additional local requirements approved by the local school board as authorized under Miss. Code Ann. § 37-16-7.

CURRICULUM AREA	CARNEGIE UNITS	REQUIRED SUBJECTS
ENGLISH	4 ¹	English I English II
MATHEMATICS	4 ²	Algebra I or Integrated Math I
SCIENCE	3 ³	Biology I
SOCIAL STUDIES	3	1 World History ⁴ 1 U.S. History ⁴ ½ U.S. Government ½ Mississippi Studies ⁵
HEALTH	½ ^{6&7}	Contemporary Health ¹¹
BUSINESS and TECHNOLOGY	1 ⁸	1 Information and Communication Technology (ICT) II or 1 Science, Technology, Engineering & Mathematics (STEM) or 1 Technology Foundations or ½ Keyboarding and ½ Computer Applications ¹²
THE ARTS	1 ⁹	Any approved 500.000 course
ELECTIVES	4½ ¹⁰	
TOTAL UNITS REQUIRED	21	

APPENDIX A-1 (Continued)

GRADUATION REQUIREMENTS STANDARD 14 DISTRICT OPTION

¹Compensatory English, Compensatory Reading, and Compensatory Writing may not be included in the four (4) English courses required for graduation; however, these courses may be included in the four and one-half (4½) general electives required for graduation. Beginning school year 2014-2015, Compensatory English may only be taken if a credit-bearing English course is taken in the same school year. MYP-English I and MYP English II are accepted in lieu of the English I and English II requirements for students enrolled in the IB program.

²Compensatory Mathematics and any developmental mathematics course may not be included in the four (4) mathematics courses required for graduation; however, these courses may be included in the four and one-half (4½) general electives required for graduation. Beginning school year 2014-2015, Compensatory Mathematics may only be taken if a credit-bearing Math course is taken in the same school year. Beginning school year 2004-2005 for all entering eighth graders, at least one (1) of the four (4) required mathematics courses must be higher than Algebra I or Integrated Math I. The allowable mathematics courses that can be taken which are higher than Algebra I are: Geometry, Integrated Math II, Algebra II, Integrated Math III, CCSS Advanced Math Plus, Algebra III, SREB Math Ready, Calculus, AP Calculus AB, AP Calculus BC, and AP Statistics. Advanced Algebra, Trigonometry, Pre-Calculus, Discrete Mathematics, and Statistics meet this requirement if taken prior to the 2015-2016 school year. One (1) of the four (4) required mathematics units may be in Architecture & Drafting if the student completes the two-course sequence for Architecture & Drafting I & II. Effective with the eighth graders of 2004-2005, Pre-Algebra, Transition to Algebra, and Algebra I, may be taken in the eighth grade for Carnegie unit credit. Pre-Algebra and Transition to Algebra are no longer available after the 2013-2014 school year. Carnegie units may be earned by seventh and eighth graders effective with school year 2014-2015 for the following courses: CCSS Compacted Math Grade 7, CCSS Math Grade 8, CCSS Compacted Math Grade 8 (with Integrated Math I), and CCSS Math Grade 8 (with Algebra I/Traditional). MYP Geometry, MYP Algebra II, IB-DP Mathematics I, IB-DP Mathematics II, IB-DP Mathematical Studies I, IB-DP Mathematical Studies II are allowable mathematics courses higher than Algebra I for IB students.

³One (1) unit may be in Concepts of Agriscience or Introduction to Agriscience, and a second unit may be earned by completing two (2) of the following three (3) courses: Science of Agricultural Plants, Science of Agricultural Animals, or Science of Agricultural Environment. Two (2) units may be in the following courses if the student completes the required course sequence ending with Healthcare & Clinical Services II, Aquaculture II, Forestry II, Robotics/Engineering II, Polymer Science II or Careers in Polymer Science, Horticulture II or Horticulture Landscape and Turf grass, Engineering II or Applied Engineering Concepts, Health Sciences II or Workplace and Employment Skills in Health Sciences. The allowable lab-based physical science courses are Physical Science, Chemistry, AP Chemistry, Physics, AP Physics B, AP Physics C – Electricity and Magnetism, AP Physics C – Mechanics, Polymer Science II, and Robotics/Engineering II. IB-DP Physics I, IB-DP Physics II, MYP Chemistry, and IB-DP Chemistry may be accepted as allowable lab-based physical science courses for students enrolled in the IB program. MYP Biology and IB-DP Biology I may be accepted in lieu of the Biology I requirement for students enrolled in an IB program. Effective with school year 2013-14, up to two (2) of the three (3) required science units (excluding Biology I) may be earned by completing Agriculture and Natural Resources I & II. One (1) credit allowed shall be awarded for Biology II, and one-half (½) credit shall be awarded for Botany, and one-half (½) credit shall be awarded for Field Experiences in Science. Effective with eighth graders of school year 2013-14, Introduction to Agriscience may be taken in the eighth grade for Carnegie unit credit.

⁴Based on the *2011 Mississippi Social Studies Framework*, A.P. World History can be accepted in lieu of the required World History from the Age of Enlightenment to Present course. A.P. United States History can be accepted in lieu of the required U.S. History from Post-reconstruction to Present course. A.P.

Government and Politics: United States can be accepted in lieu of the required United States Government course. IB-DP History of the Americas I is accepted in lieu of the required U.S. History course for students enrolled in the IB program. IB-DP History of the Americas II is accepted in lieu of the required Mississippi Studies, Economics, and/or U.S. Government courses for students enrolled in the IB program. MYP U.S. Government is accepted in lieu of the required Government course for students enrolled in the IB program.

⁵The credit earned for a State/Local Government course in any other state by an out-of-state transfer student who enters after the sophomore year can stand in lieu of Mississippi Studies or Mississippi State and Local Government. If the transfer student took a State/Local Government course in a grade level that did not award Carnegie unit credit, then any other one-half ($\frac{1}{2}$) unit social studies course may be accepted. An out-of-state student who transfers after the junior year may substitute any other one-half ($\frac{1}{2}$) unit social studies course. Effective with eighth graders of school year 2013-14, Mississippi Studies and Geography may be taken in the eighth grade for Carnegie unit credit.

⁶Credit earned in Healthcare & Clinical Services I/Health Science I may be accepted in lieu of Contemporary Health to meet the graduation requirement for one-half ($\frac{1}{2}$) Carnegie unit in Health.

⁷Successful completion of JROTC I and JROTC II may be accepted in lieu of Contemporary Health to meet the graduation requirement for one-half ($\frac{1}{2}$) Carnegie unit in Health beginning in the 2010-2011 school year and thereafter, when instruction includes all health components in the JROTC curriculum.

⁸Evidence of proficiency in Keyboarding and Computer Applications is accepted in lieu of the required courses if the student earns one (1) unit in any of the courses listed in the *Business and Technology Framework* (academic and vocational). Information & Computer Technology (ICT) II may be accepted in lieu of Computer Discovery. A Carnegie unit earned for Science, Technology, Engineering, & Mathematics (STEM) in the 8th or 9th grade meets this graduation requirement. Technology Foundations replaces Computer Discovery, Keyboarding and Computer Applications and meets this graduation requirement when taken in grades 7-12. MYP Computer Discovery may be accepted in lieu of Computer Discovery for students enrolled in an IB program.

⁹Beginning school year 2015-2016, and thereafter, Digital Media may be accepted in lieu of the art requirement.

¹⁰Elective units in physical education include participation in interscholastic athletic activities, band, performance choral, dance and JROTC that meet the instructional requirements specified in the *Fitness through Physical Education Framework* and that are sanctioned by the Mississippi High School Activities Association.

¹¹Comprehensive Health or Family and Individual Health meet this requirement if taken prior to the 2014-2015 school year.

¹²Computer Discovery meets this requirement if taken prior to the 2012-2013 school year.

GRADUATION REQUIREMENTS
STANDARD 14
SENIORS OF SCHOOL YEAR 2011-2012 (and thereafter)
(Entering ninth graders in 2008-2009 and thereafter)

Each student graduating from a secondary school in an accredited school district will have earned the required Carnegie units as specified in the following table. Contents of each required and elective course must include the core objectives identified in the *Mississippi Curriculum Frameworks*. Course titles and identification numbers must appear in the current edition of the *Approved Courses for Secondary Schools of Mississippi*. (See 7 Miss. Admin. Code Pt. 3, Ch. 28, R. 28.2, R. 28.3.) Enrollment in online and correspondence courses listed in this book must have prior approval granted by the principal. No more than one (1) of the minimum required number of units may be earned through completion of an approved correspondence course.

Any student who completes the minimum graduation requirements as specified below and has achieved a passing score on each of the required high school exit examinations is eligible to receive a high school diploma. The local school district may establish additional local requirements approved by the local school board as authorized under Miss. Code Ann. § 37-16-7.

Beginning school year 2008-2009 and thereafter, all entering ninth graders (seniors of school year 2011-2012 and later) will be required to have a minimum of 24 Carnegie units as specified below, unless their parent/guardian requests to opt the student out of Appendix A-2 requirements in accordance with local school board policy. Any student who is taken out of these requirements of Appendix A-2 will be required to complete the graduation requirements as specified in Appendix A-1 (District Option). The local school district may establish additional local requirements approved by the local school board as authorized under Miss. Code Ann. § 37-16-7.

CURRICULUM AREA	CARNEGIE UNITS	REQUIRED SUBJECTS
ENGLISH	4 ¹	English I English II
MATHEMATICS	4 ²	Algebra I or Integrated Math I
SCIENCE	4 ³	Biology I
SOCIAL STUDIES	4	1 World History ⁴ 1 U.S. History ⁴ ½ Geography ⁴ ½ U.S. Government ½ Economics ⁵ ½ Mississippi Studies ⁴
HEALTH and PHYSICAL EDUCATION	1 ^{7&8}	½ Contemporary Health and ½ Physical Education ^{9&11}
BUSINESS and TECHNOLOGY	1 ¹⁰	1 Information and Communication Technology (ICT) II or 1 Science, Technology, Engineering & Mathematics (STEM) or 1 Technology Foundations or ½ Keyboarding and ½ Computer Applications ¹⁰
THE ARTS	1 ¹¹	Any approved 500.000 course
ELECTIVES	5 ¹²	
TOTAL UNITS REQUIRED	24	

APPENDIX A-2 (Continued)

GRADUATION REQUIREMENTS

STANDARD 14

SENIORS OF SCHOOL YEAR 2011-2012 and thereafter (Entering ninth graders in 2008-2009 and thereafter)

¹Compensatory English, Compensatory Reading, and Compensatory Writing may not be included in the four (4) English courses required for graduation; however, these courses may be included in the five (5) general electives required for graduation. Beginning school year 2014-2015, Compensatory English may only be taken if a credit-bearing English course is taken in the same school year. Accelerated English 9 can be accepted in lieu of English I. Accelerated English 10 and AP English Language Composition can be accepted in lieu of English II. Beginning school year 2010-2011 for all entering ninth graders, English I is a required prerequisite course for English II. English I may not be taken after a student completes English II.

²Compensatory Mathematics, Introduction to Engineering, and any developmental mathematics course may not be included in the four (4) mathematics courses required for graduation; however, these courses may be included in the five (5) general electives required for graduation. Beginning school year 2014-2015, Compensatory Mathematics may only be taken if a credit-bearing Math course is taken in the same school year. Math 8 cannot be taken after Algebra I or Integrated Math I. Beginning school year 2007-2008 for all entering eighth graders, at least two (2) of the four (4) required mathematics courses must be higher than Algebra I or Integrated Math I. Effective with ninth graders of 2010-2011, Survey of Mathematical Topics may not be included in the two (2) math courses higher than Algebra I. The allowable mathematics courses that can be taken which are higher than Algebra I or Integrated Math I are: Geometry, Integrated Math II, Algebra II, Integrated Math III, CCSS Advanced Math Plus, Algebra III, SREB Math Ready, Calculus, AP Calculus AB, AP Calculus BC, and AP Statistics. Advanced Algebra, Trigonometry, Pre-Calculus, Discrete Mathematics, and Statistics meet this requirement if taken prior to the 2015-2016 school year. MYP Geometry, MYP Algebra II, IB-DP Mathematics I, IB-DP Mathematics II, IB-DP Mathematical Studies I, and IB-DP Mathematical Studies II are allowable mathematics courses higher than Algebra I for IB students. One (1) of the four (4) required mathematics units may be in Architecture & Drafting if the student completes the two-course sequence for Architecture & Drafting I & II. One (1) of the four (4) required mathematics units may be in Survey of Mathematical Topics; however, this course does not meet the mathematics requirement for admission to institutions of higher learning. Effective with the eighth graders of 2004-2005, Pre-Algebra, Transition to Algebra, and Algebra I may be taken in the eighth grade for Carnegie unit credit. Pre-Algebra, Transition to Algebra, and Survey of Mathematical Topics are no longer available after the 2013-2014 school year. Carnegie units may be earned by seventh and eighth graders effective with school year 2014-2015 for the following courses: CCSS Compacted Math Grade 7, CCSS Math Grade 8, CCSS Compacted Math Grade 8 (with Integrated Math I), and CCSS Math Grade 8(with Algebra I/Traditional). Effective with the eighth graders of 2008-2009, Geometry may be taken in the eighth grade for Carnegie unit credit. Effective with 7th graders of 2012-13, Pre-Algebra, Algebra I, Biology I, ICT II (Information & Communication Technology), and first-year Foreign Language may be taken in the 7th grade for Carnegie unit credit provided the course content is the same as the high school course. Effective with 8th graders of 2012-2013, STEM (Science, Technology, Engineering, & Mathematics) and second-year Foreign Language may be taken in the 8th grade for Carnegie unit credit provided the course content is the same as the high school course. Effective with 8th graders of 2013-2014, Introduction to Agriscience may be taken for Carnegie unit credit provided the course content is the same as the high school course.

³One (1) unit may be in Concepts of Agriscience or Introduction to Agriscience, and a second unit may be earned by completing two (2) of the following three (3) courses: Science of Agriculture Plants, Science of Agriculture Animals, and Science of Agricultural Environment. Two (2) units may be in the following courses if the student completes the required course sequence ending with Healthcare & Clinical Services II, Aquaculture II, Forestry II, Robotics/Engineering II, Polymer Science II or Careers in Polymer Science, Horticulture II or Horticulture Landscape and Turf grass, Engineering II or Applied Engineering Concepts, Health Sciences II or Workplace and Employment Skills in Health Sciences. Beginning school year 2008-2009 for all entering eighth graders, one (1) unit must be a lab-based physical science. The allowable lab-based physical science courses are Physical Science, Chemistry, AP

Chemistry, Physics, AP Physics B, AP Physics C – Electricity and Magnetism, AP Physics C – Mechanics, Polymer Science II, and Robotics/Engineering II. IB-DP Physics I, IB-DP Physics II, MYP Chemistry, and IB-DP Chemistry may be accepted as allowable lab-based physical science courses for students enrolled in the IB program. MYP Biology and IB-DP Biology I may be accepted in lieu of the Biology I requirement for students enrolled in an IB program. Effective with school year 2013-14, up to two (2) of the four (4) required science units (excluding Biology I) may be earned by completing Agriculture and Natural Resources I & II. One (1) credit allowed shall be awarded for Biology II, one-half (½) credit shall be awarded for Botany, and one-half (½) credit shall be awarded for Field Experiences in Science. Effective with eighth graders of school year 2013-14, Introduction to Agriscience may be taken in the eighth grade for Carnegie unit credit.

⁴Based on the *2011 Mississippi Social Studies Framework*, A.P. World History can be accepted in lieu of the required World History from the Age of Enlightenment to Present course. A.P. United States History can be accepted in lieu of the required U.S. History from Post-reconstruction to Present course. A.P. Government and Politics: United States can be accepted in lieu of the required United States Government course. A.P. Macroeconomics or A.P. Microeconomics can be taken in lieu of the required Economics course. A.P. Human Geography can be accepted in lieu of the required Geography course. MYP World Geography is accepted in lieu of the required Geography course for students enrolled in the IB program. IB-DP History of the Americas I is accepted in lieu of the required U.S. History course for students enrolled in the IB program. IB-DP History of the Americas II is accepted in lieu of the required Mississippi Studies, Economics, and/or U.S. Government courses for students enrolled in the IB program. MYP U.S. Government is accepted in lieu of the required Government course for students enrolled in the IB program. Effective with eighth graders of school year 2013-14, Mississippi Studies and Geography may be taken in the eighth grade for Carnegie unit credit.

⁵Credit earned for Business Fundamentals or Business Fundamentals II may be accepted in lieu of one-half (½) unit in Economics.

⁶The credit earned for a State/Local Government course in any other state by an out-of-state transfer student who enters after the sophomore year can stand in lieu of Mississippi Studies or Mississippi State and Local Government. If the transfer student took a State/Local Government course in a grade level that did not award Carnegie unit credit, then any other one-half (½) unit social studies course may be accepted. An out-of-state student who transfers after the junior year may substitute any other one-half (½) unit social studies course.

⁷Credit earned in Healthcare & Clinical Services I, Health Sciences I, or Theory and Application of Health Sciences I may be accepted in lieu of Contemporary Health to meet the graduation requirement for one-half (½) Carnegie unit in Health.

⁸Successful completion of JROTC I and JROTC II may be accepted in lieu of Contemporary Health to meet the graduation requirement for one-half (½) Carnegie unit in Health beginning in the 2010-2011 school year and thereafter.

⁹Comprehensive Health or Family and Individual Health meet the health requirement if taken prior to the 2014-2015 school year. The graduation requirement for one-half (½) unit in physical education may include participation in interscholastic athletic activities, band, dance and JROTC that meet the instructional requirements specified in the *Fitness through Physical Education Framework* and that are sanctioned by the Mississippi High School Activities Association.

¹⁰Evidence of proficiency in technology is accepted in lieu of the required courses if the student earns one (1) unit in a technology-rich academic or career technical course related to their program of study. Effective with school year 2012-2013, a Carnegie unit credit for ICT II (Information & Communication Technology) may be awarded to 7th grade students. Effective with school year 2012-2013, a Carnegie unit credit for STEM (Science, Technology, Engineering, & Mathematics) may be awarded to 8th grade students. ICT II may be accepted in lieu of Computer Discovery. A Carnegie unit earned for STEM in the 8th or 9th grade meets this graduation requirement. Technology Foundations replaces Computer Discovery, Keyboarding, and Computer Applications, and meets this graduation requirement when taken in grades 7-12. MYP Computer Discovery may be accepted in lieu of Computer Discovery for students enrolled in an IB program. Computer Discovery meets this requirement if taken prior to the 2012-2013 school year.

¹¹Beginning school year 2015-2016, and thereafter, Digital Media may be accepted in lieu of the art requirement for students.

¹²Only one (1) elective unit in physical education including participation in interscholastic athletic activities, band, performance choral, dance or JROTC that meet the instructional requirements specified in the *Fitness through Physical Education Framework* and that are sanctioned by the Mississippi High School Activities Association may be applied each year to the minimum 24 required state units. If a local district has graduation requirements above the state requirements, they may award additional credits as outlined in the local Board policy.

**GRADUATION REQUIREMENTS
STANDARD 14**

CAREER PATHWAY OPTION

SENIORS OF SCHOOL YEAR 2011-2012 (and thereafter)

(Entering eleventh graders in 2010-2011 and ending with entering ninth graders 2016-2017)

In 2010, Mississippi state policymakers passed legislation to create multiple pathways to a standard diploma. The 2010 legislative actions created a career pathway to a standard diploma, with the goal of improving Mississippi graduation rates and providing students with career and technical training that prepares students for postsecondary credential or certification programs and employable workplace skills. This legislative change created Miss. Code Ann. § 37-16-17, to provide for high school career option programs and career track curricula for students not wishing to pursue a baccalaureate degree.

Enrollment in online and correspondence courses listed in this book must have prior approval granted by the principal. No more than one (1) of the minimum required number of units may be earned through completion of an approved correspondence course.

CURRICULUM AREA	CARNEGIE UNITS	REQUIRED SUBJECTS
ENGLISH	4 ¹	English I English II
MATHEMATICS	3 ²	Algebra I or Integrated Math I
SCIENCE	3 ³	Biology I
SOCIAL STUDIES	3 ^{4&5}	1 U.S. History ½ U.S. Government ½ Mississippi Studies
HEALTH or PHYSICAL EDUCATION	½ ⁶	½ Contemporary Health or ½ Physical Education ¹⁰
CAREER and TECHNICAL	4 ⁷	(Selected from Student's Program of Study)
BUSINESS and TECHNOLOGY	1 ⁸	Technology Foundations, Information and Communication Technology (ICT) II, Science, Technology, Engineering, and Mathematics (STEM), or Computer Applications and Keyboarding
ELECTIVES	2½ ⁹	Courses selected from the student's approved program of study
TOTAL UNITS REQUIRED	21	

NOTE: Mississippi's Institutions of Higher Learning requirements differ from minimum graduation requirements for this diploma pathway.

APPENDIX A-3 (Continued)

GRADUATION REQUIREMENTS

STANDARD 14

CAREER PATHWAY OPTION

SENIORS OF SCHOOL YEAR 2011-2012 (and thereafter)

(Entering eleventh graders 2010-2011 and ending with entering ninth graders 2016-2017)

*Compensatory English, Compensatory Reading, and Compensatory Writing shall not be included in the four (4) English courses required for graduation. Beginning school year 2014-2015, Compensatory English may only be taken if a credit-bearing English course is taken in the same school year. The two (2) additional English credits must be from the student's program of study which includes Technical Writing, Creative Writing, English III, English IV, or any college-level dual credit courses.

²Compensatory Mathematics may not be included in the three (3) mathematics courses required for graduation. Beginning school year 2014-2015, Compensatory Mathematics may only be taken if a credit-bearing Math course is taken in the same school year. Math 8 cannot be taken after Algebra I or Integrated Math I. For students pursuing the Career Pathway Graduation Option, at least one (1) of the required mathematics courses must be above Algebra I or Integrated Math I and selected from the student's program of study. The allowable mathematics courses that can be taken which are higher than Algebra I or Integrated Math I are: Geometry, Integrated Math II, Algebra II, Integrated Math III, CCSS Advanced Math Plus, Algebra III, SREB Math Ready, Calculus, AP Calculus AB, AP Calculus BC, and AP Statistics, or any college-level dual credit courses. Survey of Mathematical Topics, Advanced Algebra, Trigonometry, Pre-Calculus, Discrete Mathematics, and Statistics meet this requirement if taken prior to the 2015-2016 school year. Effective with the eighth graders of 2004-2005, Pre-Algebra, Transition to Algebra, and Algebra I may be taken in the eighth grade for Carnegie unit credit. Effective with the eighth graders of 2008-2009, Geometry may be taken in the eighth grade for Carnegie unit credit. Pre-Algebra and Transition to Algebra are no longer available after the 2013-2014 school year. Carnegie units may be earned by seventh and eighth graders effective with school year 2014-2015 for the following courses: CCSS Compacted Math Grade 7, CCSS Math Grade 8, CCSS Compacted Math Grade 8(with Integrated Math I), and CCSS Math Grade 8(with Algebra I/Traditional).

³For students pursuing the Career Pathway Graduation Option, at least one (1) of the required science courses must be above Biology I and selected from the student's program of study. If a student's program of study allows, one (1) unit may be in Concepts of Agriscience (AEST). A second science unit may be earned by completing a two-course sequence selected from the following options: Science of Agricultural Animals, Science of Agricultural Plants, or Science of Agricultural Environment. Two (2) units may be in the following courses if the student completes the two-course sequence: Healthcare & Clinical Services I & II, Health Science I & II; Aquaculture I & II; Forestry I & II; Horticulture I & II; Polymer Science I & II; and Engineering I & II. Effective with school year 2013-14, up to two (2) of the three (3) required science units (excluding Biology I) may be earned by completing Agriculture and Natural Resources I & II. One (1) credit allowed shall be awarded for Biology II, and one-half ($\frac{1}{2}$) credit shall be awarded for Botany, and one-half ($\frac{1}{2}$) credit shall be awarded for Field Experiences in Science. Effective with eighth graders of school year 2013-14, Introduction to Agriscience may be taken in the eighth grade for Carnegie unit credit.

⁴AP U.S. History is accepted in lieu of the required U.S. History Post-reconstruction to Present. The third social studies credit should be selected based on the student's program of study.

⁵The credit earned for a State/Local Government course in any other state by an out-of-state transfer student who enters after the sophomore year can stand in lieu of Mississippi Studies or Mississippi State and Local Government. If the transfer student took a State/Local Government course in a grade level that did not award Carnegie unit credit, then any other one-half ($\frac{1}{2}$) unit social studies course may be accepted. An out-of-state student who transfers after the junior year may substitute any other one-half ($\frac{1}{2}$) unit social studies course. Credit earned for Business Fundamentals or Business Fundamentals II may be accepted in lieu of one-half ($\frac{1}{2}$)

unit in Economics. Effective with eighth graders of school year 2013-14, Mississippi Studies, Geography and Introduction to Agriscience may be taken in the eighth grade for Carnegie unit credit.

⁶Credit earned in Healthcare & Clinical Services I/Health Science I may be accepted in lieu of Contemporary Health to meet the graduation requirement for one-half ($\frac{1}{2}$) Carnegie unit in Health. Interscholastic athletic activities, band, and ROTC, if they meet the instructional requirements specified in the *Fitness through Physical Education Framework*, may also be accepted.

⁷Career and Technical Education (CTE) courses must be based on the student's program of study and should include dual credit/dual enrollment options as found in Miss. Code Ann. § 37-15-38.

⁸Evidence of proficiency in technology is accepted in lieu of the required courses if the student earns one (1) unit in a technology-rich academic or career technical course related to their program of study.

⁹Electives must be selected from courses related to the student's program of study. Credits earned not approved for that student's program of study will not be counted toward graduation requirements.

¹⁰Comprehensive Health or Family and Individual Health meet the health requirement if taken prior to the 2014-2015 school year.

**GRADUATION REQUIREMENTS
STANDARD 14**

**MISSISSIPPI EARLY EXIT DIPLOMA
SENIORS OF SCHOOL YEAR 2013-2014 (and thereafter)
(Entering ninth graders in 2011-2012 and thereafter)**

Qualification for a Mississippi Early Exit Diploma signifies to students that they are ready to do college-level work without remediation and opens up a variety of education and career pathways within and beyond high school.

In order to qualify for a Mississippi Early Exit Diploma, in addition to earning the Carnegie units listed below, students must meet college and career qualification scores in all core content areas on a series of end-of-course exams and/or the required benchmarks for college readiness on the ACT (18 in English Composition; 22 in Mathematics; 22 in Reading; 23 in Science) or Institutions of Higher Learning (IHL) approved college entrance exam.

Enrollment in online and correspondence courses listed in this book must have prior approval granted by the principal. No more than one (1) of the minimum required number of units may be earned through completion of an approved correspondence course.

CURRICULUM AREA	CARNEGIE UNITS	REQUIRED SUBJECTS
ENGLISH	2	English II (equivalent Course)
MATHEMATICS	3	Algebra I (Equivalent Course)
SCIENCE	2	Biology I (Equivalent Course)
SOCIAL STUDIES	2½	1 World History 1 U.S. History (Equivalent Courses) ½ Mississippi Studies
HEALTH and PHYSICAL EDUCATION	1	Any combination of Health and Physical Education
BUSINESS and TECHNOLOGY	1	Technology Foundations; Information and Communication Technology (ICT) II; or Science, Technology, Engineering, and Mathematics (STEM)
THE ARTS	1	Any approved 500.000 course
ELECTIVES	5	(Should focus on college admission or national certification requirements)
TOTAL UNITS REQUIRED	17½	

Equivalency Chart for Innovative Programs - Authorized by the State Board of Education

Equivalency Curriculum Chart for MS Statewide Assessment

MS Curriculum	Cambridge	Innovative High School	Quality Core ACT
Algebra I or Integrated Math I	Cambridge IGCSE Mathematics I Or Cambridge IGSE Extended Sequence	Integrated Mathematics I	ACT Quality Core Algebra I
Biology I	Coordinated Science I Or Cambridge IGCSE Biology	Integrated Science II	ACT Quality Core Biology I
English II	Cambridge IGCSE English Language	Integrated English Language II	ACT Quality Core English II
US History	Cambridge IGCSE American History	Integrated History II	ACT Quality Core American History

Equivalency Assessment for MS Statewide Assessments

MS Curriculum	Cambridge	Innovative High School	Quality Core ACT
Algebra I	Cambridge Mathematics End of Sequence Test	PLAN or ACT	ACT Quality Core Algebra I EOC Test
Biology I	Coordinated Science I or Cambridge IGCSE Biology End of Course (EOC) Test	PLAN or ACT	ACT Quality Core Biology I EOC Test
English II	Cambridge IGCSE English Language EOC Test	PLAN or ACT	ACT Quality Core English II EOC Test
US History	Cambridge IGCSE American History EOC Test	PLAN or ACT	ACT Quality Core American History EOC Test

APPENDIX A-5

**ADDITIONAL OPTIONS IN LIEU OF Required High School Exit Exams
7 MISS. ADMIN. CODE PT. 3, CH. 36, R. 36.5 (EFFECTIVE 2013-2014 SCHOOL YEAR)**

7 Miss. Admin. Code Pt. 3, Ch. 36, R. 36.5, provides approved options for students to meet high school end-of-course Subject Area Test requirements for graduation through approved alternate measures. 7 Miss. Admin. Code Pt. 3, Ch. 36, R. 36.5 applies to past, current, and future graduates and allows a student to meet the graduation requirements once he or she has failed to pass any required end-of-course Subject Area Test one (1) time.

Assessment Options	Math	Science	English	Social Studies
ACT	17	17	17	17
Dual Credit / Dual Enrollment	C or higher in MAT credit-bearing course	C or higher in BIO credit-bearing course	C or higher in ENG credit-bearing course	C or higher in HIS credit-bearing course
ASVAB + MS-CPAS2 OR Industry Certification	ASVAB score of 36 plus one (1) of the following: 1. CPAS score that meets the attainment level assigned by Federal Perkins requirements OR 2. Earn approved Industry Certification specified in the Career Pathway’s Assessment Blueprint			
ACT WorkKeys + MS-CPAS2 OR Industry Certification	WorkKeys Silver Level plus one (1) of the following: 1. CPAS score that meets the attainment level assigned by Federal Perkins requirements OR 2. Earn approved Industry Certification specified in the Career Pathway’s Assessment Blueprint			

APPENDIX A-5

Concordance Tables

7 MISS. ADMIN. CODE PT. 3, CH. 36, R. 36.2 (EFFECTIVE 2014-2015 SCHOOL YEAR)

Concordance tables provide opportunities for students who do not obtain a passing score on an End of Course (EOC) assessment to utilize a different graduation option, using a combination of the assessment scores with the final course grade. The tables provide the final course grade required to use with the scale score obtained on the EOC assessment. Districts are required to use the concordance table specific to when the student took the assessment.

MAP English II (Spring 2017)

Concordance Table	Scale Score			
Grade	1049-1048	1047	1046-1045	1044
A	PASS	PASS	PASS	PASS
B	PASS	PASS	PASS	FAIL
C	PASS	PASS	FAIL	FAIL
D	PASS	FAIL	FAIL	FAIL

*The passing score for MAP English II is 1050.

MAP Algebra I (Spring 2017)

Concordance Table	Scale Score			
Grade	1049-1048	1047	1046	1045
A	PASS	PASS	PASS	PASS
B	PASS	PASS	PASS	FAIL
C	PASS	PASS	FAIL	FAIL
D	PASS	FAIL	FAIL	FAIL

*The passing score for MAP Algebra I is 1050.

MAP English II (Senior Only Retest & Spring 2016)

Concordance Table	Scale Score			
Grade	1049-1048	1047	1046	1045
A	PASS	PASS	PASS	PASS
B	PASS	PASS	PASS	FAIL
C	PASS	PASS	FAIL	FAIL
D	PASS	FAIL	FAIL	FAIL

The passing score for MAP English II is 1050.

MAP Algebra I (Senior Only Retest, Fall 2016, Spring 2016)

Concordance Table	Scale Score			
	1049	1048	1047	1046
Grade				
A	PASS	PASS	PASS	PASS
B	PASS	PASS	PASS	FAIL
C	PASS	PASS	FAIL	FAIL
D	PASS	FAIL	FAIL	FAIL

The passing score for MAP Algebra I is 1050.

MAP Fall 2016-English II

Concordance Table	Scale Score			
	1048	1046	1045	1043
Grade				
A	PASS	PASS	PASS	PASS
B	PASS	PASS	PASS	FAIL
C	PASS	PASS	FAIL	FAIL
D	PASS	FAIL	FAIL	FAIL

The passing score for MAP English II is 1050.

PARCC Fall 2014 & Spring 2015-English II

Concordance Table	Scale Score			
	724-722	721-719	718-716	715
Grade				
A	PASS	PASS	PASS	PASS
B	PASS	PASS	PASS	FAIL
C	PASS	PASS	FAIL	FAIL
D	PASS	FAIL	FAIL	FAIL

The passing score for PARCC English II is 725.

PARCC Fall 2014 & Spring 2015-Algebra I

Concordance Table	Scale Score			
	Grade	724-722	721-719	718-716
A	PASS	PASS	PASS	PASS
B	PASS	PASS	PASS	FAIL
C	PASS	PASS	FAIL	FAIL
D	PASS	FAIL	FAIL	FAIL

The passing score for PARCC Algebra I is 725.

SATP2 English II

Concordance Table	Scale Score			
	Grade	644-641	640-639	638-637
A	PASS	PASS	PASS	PASS
B	PASS	PASS	PASS	FAIL
C	PASS	PASS	FAIL	FAIL
D	PASS	FAIL	FAIL	FAIL

The passing score for SATP2 English II is 645.

SATP2 Algebra I

Concordance Table	Scale Score			
	Grade	646-644	643-642	641
A	PASS	PASS	PASS	PASS
B	PASS	PASS	PASS	FAIL
C	PASS	PASS	FAIL	FAIL
D	PASS	FAIL	FAIL	FAIL

The passing score from SATP2 Algebra I is 647.

SATP2 Biology I

Concordance Table	Scale Score			
	Grade	644-640	639-637	636-635
A	PASS	PASS	PASS	PASS
B	PASS	PASS	PASS	FAIL
C	PASS	PASS	FAIL	FAIL
D	PASS	FAIL	FAIL	FAIL

The passing score for SATP2 Biology I is 645.

SATP2 U.S. History

Concordance Table	Scale Score			
	640-637	636-635	634-633	632-631
A	PASS	PASS	PASS	PASS
B	PASS	PASS	PASS	FAIL
C	PASS	PASS	FAIL	FAIL
D	PASS	FAIL	FAIL	FAIL

The passing score for SATP2 U.S. History is 641.

Composite (Combined) Score

7 MISS. ADMIN. CODE PT. 3, CH. 36, R. 36.3 (EFFECTIVE 2015-2016 SCHOOL YEAR)

Composite (Combined) Score Calculations provide opportunities for students who do not obtain a passing score on one or more EOC assessments. Students may utilize an additional graduation option by taking the average of all EOC assessments and achieving a minimal combined score of 646. Scale scores from the PARCC and MAP assessments will need to be transformed according to the guidance provided in Sections 1, 3, and 4.

Section 1 (Only SATP2 Assessments)

- I. Calculate the student's composite (combined) score by determining the average score across all four assessments.

Test	Score
Algebra I (SATP2)	650
English II (SATP2)	647
Biology I (SATP2)	656
U.S. History (SATP2)	638

$$\text{Average Composite (Combined) Score} = \frac{650 + 647 + 656 + 638}{4} = \frac{2591}{4} = 647.75 = 648$$

Section 2 (SATP2 and PARCC Assessments)

- I. Calculate the Transformed Score for the PARCC assessments by using the following formulas:

- To transform a PARCC Algebra I Score:
Student's PARCC Algebra I Scale Score – 78 points
- To transform a PARCC English II Score:
Student's PARCC English II Scale Score – 80 points

- II. Calculate the student's composite (combined) score by determining the average score across all four assessments.

Test	Score	Transformation	Transformed Score
Algebra I (PARCC)	723	$723 - 78 =$	645
English II (PARCC)	724	$724 - 80 =$	644
Biology I (SATP2)	652		652
U.S. History (SATP2)	644		644

$$\text{Average Composite (Combined) Score} = \frac{645 + 644 + 652 + 644}{4} = \frac{2585}{4} = 646.25 = 646$$

Section 3 (SATP2 and MAP Assessments)

- I. Calculate the Transformed Score for the MAP assessments by using the following formulas:

- To transform a MAP Algebra I Score:
Student's MAP Algebra I Scale Score – 403 points
- To transform a MAP English II Score:
Student's MAP English II Scale Score – 405 points

II. Calculate the student's composite (combined) score by determining the average score across all four assessments.

Test	Score	Transformation	Transformed Score
Algebra I (MAP)	1048	$1048 - 403 =$	645
English II (MAP)	1049	$1049 - 405 =$	644
Biology I (SATP2)	652		652
U.S. History (SATP2)	644		644

$$\text{Average Composite (Combined) Score} = \frac{645 + 644 + 652 + 644}{4} = \frac{2585}{4} = 646.25 = 646$$

Section 4 (SATP2, PARCC, and MAP Assessments)

I. Calculate the Transformed Score for the PARCC and MAP assessments by using the following formulas:

- To transform a PARCC Algebra I Score:
Student's PARCC Algebra I Scale Score – 78 points
- To transform a PARCC English II Score:
Student's PARCC English II Scale Score – 80 points
- To transform a MAP Algebra I Score:
Student's MAP Algebra I Scale Score – 403 points
- To transform a MAP English II Score:
Student's MAP English II Scale Score – 405 points

Calculate the student's composite (combined) score by determining the average score across all four assessments.

Test	Score	Transformation	Transformed Score
Algebra I (PARCC)	723	$723 - 78 =$	645
English II (MAP)	1049	$1049 - 405 =$	644
Biology I (SATP2)	652		652
U.S. History (SATP2)	644		644

$$\text{Average Composite (Combined) Score} = \frac{645 + 644 + 652 + 644}{4} = \frac{2585}{4} = 646.25 = 646$$

Calculate the student's composite (combined) score by determining the average score across all four assessments.

Test	Score	Transformation	Transformed Score
Algebra I (MAP)	1048	$1048 - 403 =$	645
English II (PARCC)	724	$724 - 80 =$	644
Biology I (SATP2)	652		652
U.S. History (SATP2)	644		644

$$\text{Average Composite (Combined) Score} = \frac{645 + 644 + 652 + 644}{4} = \frac{2585}{4} = 646.25 = 646$$

APPENDIX B

**REQUIRED COURSES IN THE CURRICULUM OF EACH SECONDARY SCHOOL
STANDARD 26
Effective Beginning School Year 2014-2015**

CURRICULUM AREA	COURSES	UNITS	TOTAL UNITS
ENGLISH	English I English II English III English IV	1 1 1 1	4
MATHEMATICS	Algebra I or Integrated Math I Geometry or Integrated Math II Algebra II or Integrated Math III Elective Mathematics Courses	1 1 1 2	5
SCIENCE	Biology I Chemistry Physics ¹ Elective Science Courses ²	1 1 1 3 ²	6
SOCIAL STUDIES	U.S. History U.S. Government Mississippi Studies World History Economics Intro to Geography	1 ½ ½ 1 ½ ½	4
BUSINESS & TECHNOLOGY	Technology Foundations; Information and Communication Technology (ICT) II; Science, Technology, Engineering, and Mathematics (STEM); or ½ Keyboarding and ½ Computer Applications Personal Finance ³	1 ½ ³	1½
HEALTH/PHYSICAL EDUCATION	Contemporary Health Physical Education	½ ½	1
THE ARTS	Any approved 500.000 course	1	1
FAMILY & CONSUMER SCIENCE	Family Dynamics	½	½
CAREER & TECHNICAL	Any combination of courses ⁴	4 ⁴	4
ADVANCED PLACEMENT ^{5,6}	At least one (1) advanced placement course in each of the four (4) core areas. AP course in Mathematics AP course in Science AP course in Language Arts AP course in Social Studies	 1 ^{5,6} 1 ^{5,6} 1 ^{5,6} 1 ^{5,6}	4
ELECTIVES	Foreign Language (IHL) <i>or</i> Advanced World Geography (IHL) Any other Elective	1 ½	1½
TOTAL UNITS REQUIRED			32½

APPENDIX B (Continued)

REQUIRED COURSES IN THE CURRICULUM OF EACH SECONDARY SCHOOL STANDARD 26

Effective Beginning School Year 2014-2015

¹Includes Physics, AP Physics B, AP Physics C—Electricity and Magnetism, and AP Physics C—Mechanics.

²Two (2) of the three (3) elective science units may be offered through the following courses: Introduction to Agriscience, Concepts of Agriscience, Science of Agricultural Plants, Science of Agricultural Animals, Science of Agricultural Environment, Healthcare & Clinical Services I & II, Aquaculture I & II, Forestry I & II, Horticulture I & II, Agriculture and Natural Resources I & II, and Robotics/Engineering I & II.

³One-half ($\frac{1}{2}$) unit in Financial Technology, one-half ($\frac{1}{2}$) unit in Resource Management, or one-half ($\frac{1}{2}$) unit in National Endowment for Personal Finance may be offered in lieu of one-half ($\frac{1}{2}$) unit in Personal Finance.

⁴Includes Agriculture; Business Technology; Cooperative and Marketing Education; Family and Consumer Sciences; Health Education; Home Economics, Lodging and Hospitality; Technology Education; and Trade and Industrial.

⁵A school offering the International Baccalaureate program is exempted.

⁶Distance learning or approved MS Virtual Public School courses may be used as an appropriate alternative for the delivery of these required Advanced Placement (AP) courses.

APPENDIX C-1

**REQUIREMENTS FOR ADMISSION TO
INSTITUTIONS OF HIGHER LEARNING (IHL) PUBLIC UNIVERSITIES IN MISSISSIPPI**

CURRICULUM AREA	COURSES	UNITS
ENGLISH		4¹
MATHEMATICS²	Algebra I ^{3&8} Geometry Algebra II	3
SCIENCE	SELECT THREE (3) UNITS FROM THE FOLLOWING LIST: Physical Science ⁴ Biology Advanced Biology Chemistry Advanced Chemistry Physics Advanced Physics Or any other science course with comparable content and rigor as approved by MDE	3 (2 lab-based)
SOCIAL STUDIES	U.S. History World History U.S. Government (½) Economics (½) <i>or</i> Geography (½)	3
COMPUTER EDUCATION	Technology Foundations or Information and Communication Technology (ICT) II Science, Technology, Engineering, and Mathematics (STEM) Computer Applications ⁵	½
ADVANCED ELECTIVES	SELECT TWO (2) UNITS⁶ FROM THE FOLLOWING LIST: Foreign Language ³ World Geography 4 th year lab-based Science 4 th year Mathematics	2
TOTAL UNITS REQUIRED		15½⁷

¹ Courses must require substantial communication skills. Compensatory English, Compensatory Reading, and Compensatory Writing may not be included.

² A fourth class in higher-level mathematics is highly recommended.

³ Pre-high school units: Algebra I or first-year Foreign Language taken prior to high school will be accepted for admission, provided course content is the same as the high school course.

⁴ One (1) Carnegie unit from a Physical Science course with content at a level that may serve as an introduction to Physics and Chemistry may be used.

⁵ This course should include use of application packages such as word processing and spreadsheets. The course should also include basic computer terminology and hardware operation.

⁶ One (1) of the two (2) units must be in Foreign Language or World Geography.

⁷ Limited exceptions to high school unit requirements may be available. For more information contact the Office of Admissions. Admission requirements are subject to change without notice at the direction of the Board of Trustees of the Mississippi Institutions of Higher Learning.

⁸ A secondary math equivalency chart is provided below.

Equivalency Curriculum Chart for Secondary Mathematics

Traditional Model	Integrated Model	Cambridge	Quality Core ACT
Algebra I	Integrated Mathematics I	Cambridge IGCSE Mathematics I or Cambridge Mathematics I Extended Sequence	ACT Quality Core Algebra I
Geometry	Integrated Math II	Cambridge IGCSE Mathematics I or Cambridge Mathematics I Extended Sequence	ACT Quality Core Geometry
Algebra II	Integrated Math III	Cambridge IGCSE Mathematics II or Cambridge Mathematics II Extended Sequence	ACT Quality Core Algebra II

**COLLEGE PREPARATORY RECOMMENDED CURRICULUM FOR ADMISSION
TO INSTITUTIONS OF HIGHER LEARNING (IHL)
PUBLIC UNIVERSITIES IN MISSISSIPPI**

CURRICULUM AREA	COURSES	UNITS
ENGLISH		4 ¹
MATHEMATICS	Algebra I ^{2&5} , Geometry, Algebra II, and any one (1) Carnegie unit of comparable rigor and content (e.g., Advanced Algebra, Trigonometry, Pre-Calculus, Calculus, AP Calculus AB, AP Calculus BC, Discrete Mathematics, Probability and Statistics, or AP Statistics)	4
SCIENCE	Biology I, Chemistry I, and any two (2) Carnegie units of comparable content and rigor as approved by MDE (e.g., Physics, Physical Science, Biology II, Chemistry II, AP Chemistry, Physics II, AP Physics B, AP Physics C – Electricity and Magnetism, AP Physics C – Mechanics, Botany, Microbiology, or Human Anatomy and Physiology)	4
SOCIAL STUDIES	World History, U.S. History, Introduction to World Geography, U.S. Government, Economics, and/or Mississippi Studies ² (Credit earned for a state/local government course in any other state may stand in lieu of Mississippi Studies.)	4
ARTS	Any visual and/or performing arts course(s), meeting the requirements for high school graduation.	1
ADVANCED ELECTIVES	Foreign Language I ² and II, Advanced World Geography and a Foreign Language I or any combination of English, mathematics, or lab-based science courses of comparable rigor and content to those required above.	2
COMPUTER APPLICATIONS	Technology Foundations or Information and Communication Technology (ICT) II Science, Technology, Engineering, and Mathematics (STEM) Computer Applications ³	½
TOTAL UNITS REQUIRED		19½⁴

¹ Courses must require substantial communication skills. Compensatory English, Compensatory Reading, and Compensatory Writing may not be included.

² Pre-high school units: Algebra I, first-year Foreign Language, or Mississippi Studies taken prior to high school will be accepted for admission provided the course content is the same as the high school course.

³ Course should emphasize the computer as a productivity tool. Instruction should include the use of application packages, such as word processing and spreadsheets. The course should also include basic computer terminology and hardware operation.

⁴ Limited exceptions to high school unit requirements may be available. For more information, contact the Office of Admissions. Admission requirements are subject to change without notice at the direction of the Board of Trustees of the Mississippi Institutions of Higher Learning.

⁵ A secondary math equivalency chart is provided below.

Equivalency Curriculum Chart for Secondary Mathematics

Traditional Model	Integrated Model	Cambridge	Quality Core ACT
Algebra I	Integrated Mathematics I	Cambridge IGCSE Mathematics I or Cambridge 9 th Core Mathematics Extended Sequence	ACT Quality Core Algebra I
Geometry	Integrated Math II	Cambridge IGCSE Mathematics I or Cambridge Mathematics I Extended Sequence	ACT Quality Core Geometry
Algebra II	Integrated Math III	Cambridge IGCSE Mathematics II or Cambridge Mathematics II Extended Sequence	ACT Quality Core Algebra II

STUDENT RECORDS STANDARD 8

1. Student records are collected, maintained, and disseminated as required by Miss. Code Ann. §§ 37-15-1 through 37-15-3, as amended, the *Family Educational Rights and Privacy Act of 1974*, as amended, 20 USC Section 1231, and the Confidentiality Section of the *Individuals with Disabilities Act, 1997 Amendments*.
2. Permanent records are kept in perpetuity for every person who has enrolled or is enrolled in a school.
3. The permanent record contains (a) legal name and address of the student, (b) date of birth as verified by birth certificate, (c) courses taken and grades or proficiency level earned, (d) immunization record, (e) date of withdrawal or graduation, (f) social security number {optional}, (g) record of performance on the required graduation tests, and (h) any other information determined by the State Board of Education.
4. Active permanent records are maintained in a secure and fire-resistant location in each school until the student withdraws or graduates, at which time the record may be transferred and/or placed on photographic film or microfilm in a central, fire-resistant depository.
5. Cumulative records are maintained for each student currently enrolled in a school.
6. The cumulative record (folder) contains the same information as the permanent record, as well as results of standardized tests and other information required by school board policies or prescribed by the State Board of Education.
7. Active cumulative records are maintained in a secure, fire-resistant location in each school.
8. Cumulative records of students who transfer or who are promoted to another school within or outside the district are to be sent to the head of the school to which the student transfers.
9. Cumulative records may be destroyed by order of the school board of the school district in not less than five (5) years after the permanent record of the student has become inactive and has been transferred to the central depository of the district.

Permanent and active cumulative records of any school (public or nonpublic) that closes are transferred to the central depository of the school district wherein the closed school is located. For further clarification or information, see the current edition of the *Mississippi Cumulative Folders and Permanent Records Manual of Directions*.

REQUIREMENTS OF THE MISSISSIPPI STATEWIDE ASSESSMENT SYSTEM STANDARD 16

I. PURPOSE

It is the policy of the State Board of Education that all test procedures and results that are used in the Mississippi Statewide Assessment System and/or used in the Mississippi Statewide Accreditation System be valid and accurate for making related decisions. In order to protect the security and integrity of all tests administered through the Mississippi Statewide Assessment System, as well as to ensure reporting of accurate assessment results, the State Board of Education establishes the following requirements and the consequences applied when a school district or school is found in violation of any requirement. These requirements are established under the authority granted in Miss. Code Ann. § 37-16-1, § 37-16-3, and § 37-16-4.

II. DEFINITIONS

Secure test materials include certain test administrator manuals, test booklets, answer documents, and other materials as specified by the Office of Student Assessment.

A possible testing irregularity is any incident in the test handling or administration that leads to a question regarding the security of the test or the accuracy of the test data.

A verified testing irregularity is a violation of a testing requirement.

III. REPORTING AND USE OF TEST DATA

The school district will release test score information to parents, legal representatives, teachers, students, other educators, the media, and the public in a timely manner and provide interpretive material as necessary. The school district will use test scores appropriately in making decisions regarding students. A decision or characterization that will have a major impact on an individual student is not made on the basis of a single test score. Additional retesting opportunities will be made available for any “high stakes” test.

IV. REQUIREMENTS

The following is not an exhaustive list of requirements.

1. The District Test Coordinator or a designated representative of the school district must attend applicable training sessions sponsored by the Office of Student Assessment.
2. A District Test Security Plan is prepared each new school year no later than September 30.
 - a. The District Test Security Plan contains all components as required by the Office of Student Assessment.
 - b. The District Test Security Plan is signed by the district superintendent, the district test coordinator, and the chairman of the school board. The School Test Security Plan, which is a part of the District Test Security Plan, is signed by the school principal, school test coordinator, and the district test coordinator.

- c. The District Test Security Plan identifies **all** individuals who have access to the secure storage area at district and school sites.
3. Except during actual test administration, secure test materials are kept under lock and key, and access to secure test materials is limited to individuals identified in the test security plan as responsible for their security. While secure test materials are in the District, anyone listed as having access to the secure storage area must be accompanied by a second person when entering the secure storage area. To ensure that security is maintained from year to year, it is the responsibility of the District each year to review the list of individuals who have access to the secure storage area and to ensure that only those individuals listed have access to the secure area by way of keys or vault combination.
 - a. Secure test materials are kept in locked storage before testing at both the district and school levels.
 - b. Access to secure test materials is limited to those individuals identified in the test security plan. Test administrators and proctors will have access as described in the district test security plan. Access to test materials means handling the materials, not reviewing and analyzing test items, unless reading accommodations are required. The superintendent or a specified designee shall designate the personnel who are authorized to have access to test materials.
 - c. Test materials are not to be removed from security packaging prior to the time indicated on instructions from the Office of Student Assessment.
 - d. Secure test materials are kept in locked storage after testing at both the District and school levels unless otherwise directed by the Office of Student Assessment.
4. All secure test materials are accounted for before, during, and after testing as specified in the District Test Security Plan. Test administrators and proctors will have access as described in the district test security plan. Access to test materials means handling the materials, not reviewing and analyzing test items, unless reading accommodations are required. The superintendent or a specified designee shall designate the personnel who are authorized to have access to test materials.
 - a. All secure test materials are accounted for before testing at the district level.
 - b. All secure test materials are accounted for before testing at the school level.
 - c. Test administrators account for all secure test materials before students are allowed to leave the testing room.
 - d. All secure test materials are accounted for after testing at the school level.
 - e. All secure test materials are accounted for after testing at the district level.
 - f. All secure materials are returned according to the schedule published by the Office of Student Assessment. In the event that a secure testing document has been contaminated by bodily fluids or other health-related hazards, the district test coordinator will follow procedures for disposal as outlined during District Test Coordinator training, and include these procedures in the District Test Security Plan.
 - g. If supplementary materials, such as scratch paper, maps, and manipulatives are provided, procedures for disposal are outlined in the District Test Security Plan and followed.
5. Any person involved in any phase of the testing program has been trained in appropriate assessment administration and test security procedures.
 - a. Test administrators shall be licensed school personnel.
 - b. Due to the need for the one-on-one administration of the English language proficiency test for English Language Learners, which includes component subtests such as reading, writing,

- speaking, listening, the test administrator may be a non-licensed employee as long as the proctor for the administration is a licensed staff member.
- c. For only the English language proficiency test for English Language Learners, if a licensed employee is the test administrator, the District is not obligated to provide a second person as proctor.
 - d. The District conducts professional development training on proper assessment administration procedures and test security for all individuals involved in the handling and administration of each test.
 - e. The District maintains complete records of all professional development related to assessment.
 - f. The District has documentation that training related to assessment included information on test security violations and the consequences of violations.
6. Both a test administrator and a proctor are present and actively monitoring students during the entire test administration.
 - a. At least two (2) people are present from the time that testing materials are distributed to the test administrator until all test materials have been returned to the secure area.
 - b. A seating chart is required for each room/site used for any statewide assessment; the seating chart must be signed and dated by the test administrator, proctor, and school test coordinator.
 7. Students are not allowed access to test questions prior to testing and are not allowed access to answers at any time.
 8. Reproducing (by any means) or disclosing secure test material (including pilot material) and student responses before, during, or after test administration are prohibited. Reproduction or disclosure of secure test materials includes but is not limited to the following: reviewing, reading, or looking at secure test material in a manner that is inconsistent with test security regulations and/or procedures as outlined in the test administrator's manual. Use of unreleased test items in any form (including rewording of such test items) is strictly prohibited.
 9. Coaching students, altering responses, or interfering with responses in any way during or after the scheduled test administration is prohibited. Coaching students is defined as providing answers by staff or other students to students in any manner during the test, including cues, clues, hints, and/or actual answers in any form-written, printed, verbal or non-verbal (including, but not limited to, chalkboards, charts, bulletin boards, posters, computers, hand signals) or allowing students to alter responses after the scheduled test administration.
 10. All eligible students are tested. (See also *Testing Students with Disabilities Regulations and Guidelines for English Language Learners: Policies, Procedures, and Assessments.*) (7 Miss. Admin. Code Pt. 3, Ch. 34, R. 34.1, Ch. 36, R. 36.1, Ch. 78, R. 78.1) {Miss. Code Ann. § 37-16-3(2)}
 - a. Accurate exclusions, absences, and other required data are compiled for each test for each school.
 - b. Exclusions and absences data for each test for each school are maintained on file in the District.
 - c. Students who drop a course for which an end-of-course Subject Area Test is required after the dates noted below shall still take the appropriate end-of-course Subject Area Test.

Traditional Schedule

- Students enrolled in a course at the end of January (5th month) must be tested.

Fall Block

- Students enrolled in a course at the end of October (2nd month) must be tested.

Spring Block

- Students enrolled in a course at the end of March (7th month) must be tested.

- d. Students enrolled in and taking courses for the first time for which end-of-course Subject Area Tests are required shall take the appropriate Subject Area Tests. These students shall take the appropriate end-of-course Subject Area Test, even if the course title in *Approved Courses for the Secondary Schools of Mississippi* includes the words Accelerated, Enrichment, or Advanced Placement.
 - e. Each student enrolled in and re-taking courses for which end-of-course Subject Area Tests are required shall take the appropriate Subject Area Test only if the student has not previously passed the Subject Area Test.
 - f. Each student shall take the appropriate end-of-course Subject Area Test at the end of the course regardless of the grade level in which the course is offered.
 - g. Students enrolled in a Mississippi public school will be required to pass end-of-course Subject Area Test in a course for which the school accepts Carnegie units earned by the student through enrollment in summer school, virtual school, or any other non-standard school as defined by the Office of Accreditation.
11. Only appropriate allowable testing accommodations are provided for students as specified in the current edition of *Testing Students with Disabilities Regulations* and the current edition of *Guidelines for English Language Learners: + Policies, Procedures, and Assessments*. (7 Miss. Admin. Code Pt. 3, Ch. 34, R. 34.1, Ch. 36, R. 36.1, Ch. 78, R. 78.1, R. 78.10) The use of any accommodation not listed in these documents or in the current edition of the *Testing Accommodations Manual* published by the Office of Student Assessment must first be approved by the Office of Student Assessment.
 12. Makeup testing is provided for students who are absent during the regularly scheduled test administration.
 13. Tests are administered according to the standard procedures defined in the test administrator's manuals and related documents and according to the schedule published by the Office of Student Assessment.
 14. Anyone with knowledge of or information regarding a possible testing irregularity or alleged security violations reports the alleged irregularity/violation to an appropriate authority. {Miss. Code Ann. § 37-16-4(1)(f)}
 15. Test administrators and proctors keep written records of any testing irregularities occurring during testing and report these to the school test coordinator who then reports to the District Test Coordinator. The District Test Coordinator reports all irregularities for a test administration to the district superintendent for investigation. Documentation regarding testing irregularities is maintained on file in the district.
 16. The superintendent of the District investigates all reports of alleged violations of test security and/or potential testing irregularities and submits a report of findings to the Office of Student Assessment within fifteen (15) working days after the alleged violation and/or potential irregularity has been reported to him or her.

17. No statistically significant similar or identical patterns of responses and/or erasures are noted in students' answer documents.
18. No statistically significant group or individual scores that are inconsistent with established patterns of achievement are noted.
19. The school prohibits the possession and/or use of any electronic communication device, including, but not limited to, iPods, MP3 players, Bluetooth devices, cell phones, and/or other personal digital assistance devices during the administration of scheduled statewide tests.
20. Tests are to be administered in an environment that provides an adequate test setting for students. Such an environment should provide adequate lighting, reduced noise level, and spacing to ensure that students cannot see the answers being bubbled (or answers being selected during computer-based online testing) by other students.

V. INVESTIGATION

The Office of Student Assessment follows a systematic procedure to ensure that all evidence indicating possible testing irregularities is investigated. Corrective action will be taken when warranted.

A. PROCEDURE FOR INVESTIGATION

Identifying and investigating possible testing irregularities involves a variety of data sources. These include formal testing audits, self-reports of testing irregularities, allegations/complaints related to possible testing irregularities, and results of analyses and reports designed to identify possible irregularities, including the percent of students tested, changes in enrollment, score exceptionalities, erasure report results, and missing documents reports.

The procedure for handling testing irregularities is repeated for each test administration. The Office of Student Assessment will notify the school district in writing when a possible testing irregularity has been identified. Within fifteen (15) working days following a reported potential irregularity/violation and/or receipt of the written notification from the Office of Student Assessment, the District will submit a written report to the Office of Student Assessment. The Office of Student Assessment reserves the right to conduct an independent investigation.

The Office of Student Assessment will evaluate the District report to determine whether the possible testing irregularity has been resolved or the testing irregularity has been verified. If the possible testing irregularity has been resolved, the Office of Student Assessment will notify the District that no further action is required. If a testing irregularity has been verified, the Office of Student Assessment will notify the district superintendent.

In the case of any verified testing irregularity that jeopardized or may have jeopardized the security and integrity of the test(s) or the accuracy of the test results, the Office of Student Assessment will report the irregularity to the Office of Accreditation for appropriate action and follow-up. (See VI.*CONSEQUENCES*.) In the case of improper student behavior supported by a data forensics company and not disproved in the District report, the Office of Student Assessment will respond to the district superintendent with a request on behalf of the State Superintendent of Education that the district superintendent ask for the invalidation of the suspect test scores and prepare for the students with the suspect test scores to participate in the next test administration. If the District refuses to

invalidate the suspect scores, the State Superintendent will have the authority to invalidate the scores.

In case of an allegation of an irregularity that prompts a need for an investigation by the Mississippi Department of Education and the investigation provides substantial evidence that an irregularity has occurred, the State Superintendent will have the authority to invalidate suspect scores. The district superintendent will be notified of the invalidated suspect scores and of the need to prepare students with the suspect scores to participate in the next test administration.

B. PROCEDURES FOR PERSONAL MISCONDUCT INVESTIGATION

If an irregularity that represents misconduct or other breaches of test security on the part of district personnel within a school district is identified, the superintendent of the District will be notified of the irregularity. It is the responsibility of the District to conduct an investigation into the allegation and report findings to the Office of Student Assessment. If the Office of Student Assessment concludes that the irregularity was resolved, the district is notified that no further action is necessary.

If the Office of Student Assessment concludes that the irregularity was verified, the district superintendent is notified that the Office of Accreditation is being apprised of the finding.

In case of an allegation of an irregularity or in the case of statistical analyses that prompt a need for an investigation by the Mississippi Department of Education and the investigation provides substantial evidence that an irregularity has occurred, the State Superintendent will have the authority to invalidate suspect test scores. The district superintendent will be notified of the invalidated suspect scores and of the need to prepare students with the suspect scores to participate in the next test administration. The district superintendent will be notified that the Office of Accreditation is being apprised of the findings.

The district attorney may investigate allegations of violations of test security on his own initiative following receipt of allegations, at the request of a school district, or at the request of the Mississippi Department of Education.

After a conviction, the personnel in question will be notified in writing that the evidence of conviction will be presented to the Commission on Educator and Administrator Education, Certification and licensure and development and that the Commission is required to take action pursuant to the authority granted in Miss. Code Ann. § 37-16-4. In the case of improper student behavior supported by the data forensics company and not disproved in the district report, the district superintendent will be asked to request the invalidation of the suspect test scores and prepare for the students with the suspect test scores to participate in the next test administration.

VI. CONSEQUENCES

A. LETTER OF WARNING

If a violation has been verified that did not result in a substantial probability that the security, accuracy, or validity of the test results has been jeopardized, then the Office of Student Assessment may issue a letter of warning to the school district superintendent to be placed in the district and/or school file.

Multiple and/or repeated minor violations that indicate the district and/or school has not corrected issues addressed in previous letters of warning or that the district and/or school has continued to be in noncompliance with the numbered issues listed in Requirements (Section IV) may result in a recommendation for a citation to be placed on the accreditation record. (See Section B below.) In the case of improper student behavior supported by the data forensics company and not disproved in the district reports, the District will be asked to request the invalidation of the suspect scores. If the improper student behavior is determined to be isolated to an individual student's or to individual students' behavior and not supported or condoned by the District, the District will not receive a letter of warning. The District will be asked in an official letter by the Office of Student Assessment to put measures in place to address and prevent the possibility of such improper behavior being repeated. However, multiple administrations resulting in suspect scores may result in further investigation by the Office of Student Assessment that may lead to further consequences. (See VI. CONSEQUENCES.)

B. CITATION PLACED ON THE ACCREDITATION RECORD WITH NO IMMEDIATE ACTION TO DOWNGRADE THE ACCREDITATION STATUS

1. Multiple Letters of Warning

Multiple and/or repeated violations as outlined in Section A above may result in a recommendation for a citation to be placed on the district's Accreditation Record Summary. The Office of Accreditation will note the citation of noncompliance on the district's accreditation record and notify the superintendent of this action. No immediate action to downgrade the district accreditation status will be recommended. This citation will remain on record until the district has **successfully** completed the next scheduled administration of the same test for which the irregularity was originally verified.

The Office of Student Assessment may recommend to the Commission on School Accreditation that the school's annual performance classification include the label School in Violation of Test Security.

2. Substantial Probability That the Security, Accuracy, or Validity of the Test Results Has Been Jeopardized

If a verified violation has resulted in a substantial probability that the security, accuracy, or validity of the test results has been jeopardized, the Office of Student Assessment will issue written notification to the district superintendent. The Office of Student Assessment will note the violation on the School and/or District Assessment Record and notify the Office of Accreditation.

The Office of Accreditation will note the citation of noncompliance on the district's accreditation record and notify the superintendent of this action. No immediate action to downgrade the district accreditation status will be recommended. This citation will remain on record until the district has **successfully** completed the next scheduled administration of the **same test** for which the irregularity was originally verified. For example, if the citation is issued for the December Subject Area Administration of the U.S. History Test, the next scheduled administration for the same test will be the December Subject Area administration the following year.

The Office of Student Assessment may submit a recommendation to the Commission on School Accreditation that the school's annual performance classification include the label School in Violation of Test Security.

C. CITATION PLACED ON THE ACCREDITATION RECORD THAT MAY RESULT IN IMMEDIATE ACTION TO DOWNGRADE OF ACCREDITATION STATUS

If it is determined that a violation of a testing requirement jeopardizes the security and integrity of the test(s) or the accuracy of test results, the Office of Student Assessment will issue written notification of the violation to the superintendent of the school district and to the Office of Accreditation.

The Office of Accreditation will note the citation of noncompliance on the district's Accreditation Record Summary and notify the superintendent of this action. The citation of noncompliance will be presented to the Commission on School Accreditation for appropriate action. This citation will remain on record until the district has **successfully** completed the next scheduled administration of the **same test** for which the irregularity was originally verified. For example, if the citation is issued for the December Subject Area Administration of the U.S. History Test, the next scheduled administration for the same test will be the December Subject Area administration the following year.

The Office of Student Assessment may recommend to the Commission on School Accreditation that the school's annual performance classification include the label of School in Violation of Test Security.

D. INVALIDATION OF SCORES

1. Student Retest and Score Invalidation Procedure

In the case of findings that reveal misconduct at the District or school level, the State Superintendent of Education may order the local school district to have students retake the examination(s) at the district's expense for all areas in question. Should the local district choose not to have students re-examined to establish validity, the State Superintendent of Education will have the authority to have affected scores invalidated. At such time, the local district will be notified.

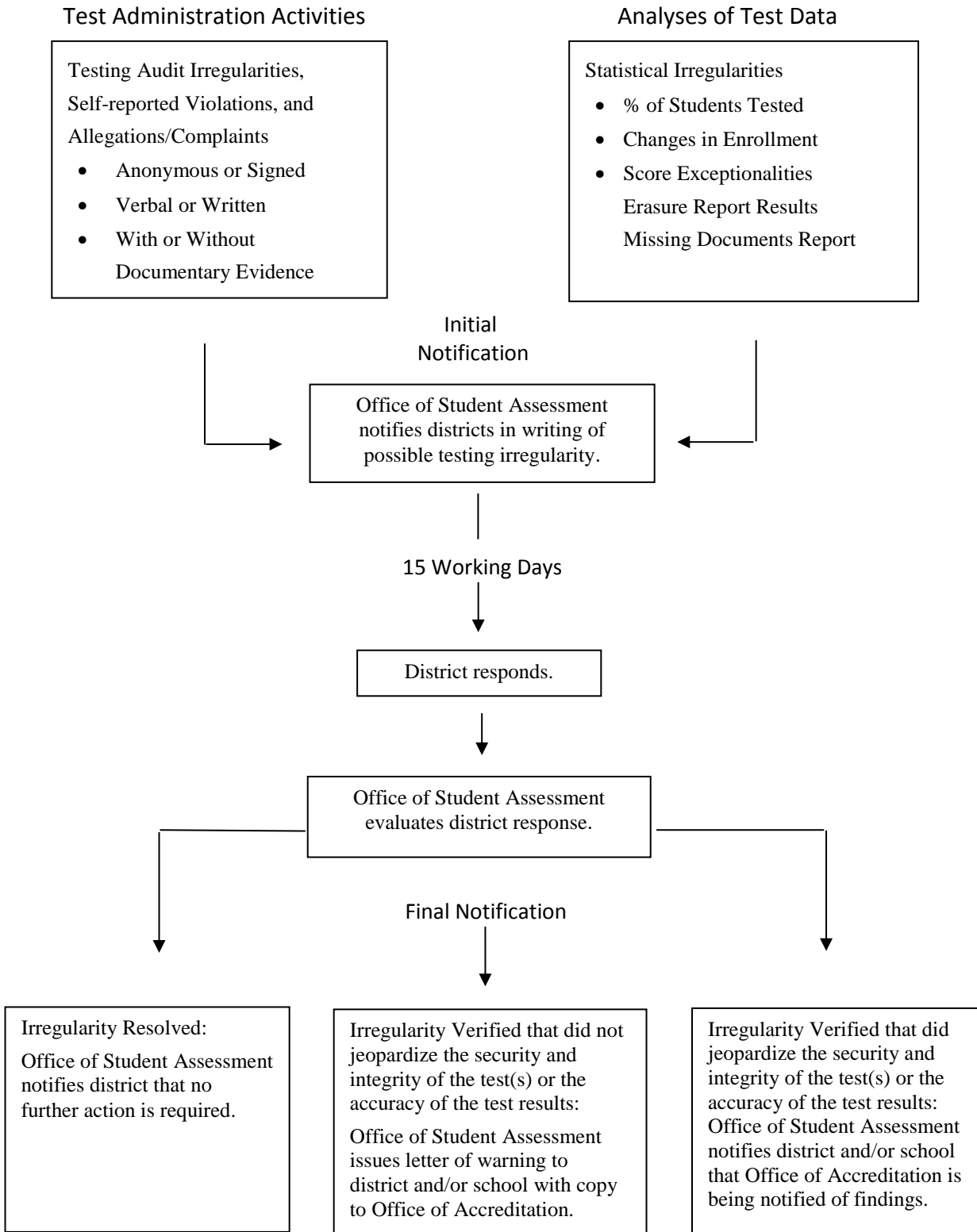
A school will not receive a school performance classification if the test data have been invalidated, and the school performance classification will be noted as Test Data Invalidated. (See Accreditation Policy 3.3.) In the case that the Office of Student Assessment has requested the district superintendent ask for the invalidation of a student's (or students') suspect scores based upon the analyses by the data forensics company and the refusal to do so by the district superintendent, the State Superintendent will have the authority to have suspect score(s) invalidated. At such time, the local district will be notified.

2. Individual Irregularity Procedure

If there is evidence of a nature that confirms one (1) or more individual testing irregularities on the Subject Area Tests or other tests that have high stakes consequences for individual student(s) resulting in the student or students not being able to graduate in the current school year, the individual(s) in question shall be notified in writing of the irregularity by the district superintendent and given an opportunity to provide an explanation and evidence that the questioned score(s) is/are consistent with other test scores or other academic performance. If retesting of individuals on the test is required and the retesting yields scores that would deny students a diploma or affect promotion/retention decisions after all retesting opportunities have been exhausted, affected individuals will be given an opportunity to appeal to the State Board of Education the decision to invalidate their original scores on the test. No hearing will be granted

to any student who has not completed all other requirements for graduation or promotion and exhausted all retake opportunities.

Procedure for Handling Possible Testing Irregularities



The procedure for handling testing irregularities is repeated for each test administration.

MISSISSIPPI OCCUPATIONAL DIPLOMA STANDARD 14.4

SENIORS OF SCHOOL YEAR 2008-2009 AND LATER (Entering ninth graders in 2005-2006 and thereafter)

In accordance with Miss. Code Ann. § 37-16-11(2), the State Board of Education has approved criteria for an occupational diploma for students with disabilities. The Mississippi Occupational Diploma provides an option for students with disabilities that emphasizes high expectations in both academics and work experiences that will assist students in acquiring and maintaining the necessary competencies and skills needed to secure and retain competitive employment. The primary postgraduate goal for these students is competitive employment.

- The decision regarding participation in the Mississippi Occupational Diploma program will be made by the student's Individualized Education Program (IEP) committee, which must include a school counselor. Instructional program and diploma options are to be reviewed annually by the IEP committee and revisions made as necessary.
- The Mississippi Occupational Diploma program may be implemented in any Least Restrictive Environment deemed appropriate by the IEP committee. Students in the occupational diploma program may earn credits by successfully completing course work selected from the general education curriculum and/or special education courses as agreed upon by the student's IEP committee.
- Students with disabilities choosing to participate in the Mississippi Occupational Diploma program must earn a minimum of 21 course credits and complete an occupational diploma portfolio containing a collection of evidence of the student's knowledge, skills, and abilities.
- Students with disabilities choosing to participate in the Mississippi Occupational Diploma program must successfully complete a two (2) year Career/Technical (Vocational) Program. In lieu of completing a two-year Career/Technical (Vocational) Program, students with disabilities may document a minimum of five hundred forty (540) hours of successful, paid employment.
- Prior to graduation, an exit IEP committee meeting must be held to evaluate accomplishment of the goals and objectives on the IEP and the completion of all requirements for the Mississippi Occupational Diploma. At this meeting, the student will present the completed Mississippi Occupational Diploma Portfolio for review by the IEP committee.
- The final Mississippi Occupational Diploma Portfolio will be reviewed and approved prior to graduation by the principal or a designee.

For additional details, see the State Board of Education approved guidelines for the Mississippi Occupational Diploma at http://www.mde.k12.ms.us/special_education/pdfs/occupat_diploma.pdf.

CONSEQUENCES FOR NONCOMPLIANCE WITH FINANCIAL ACCOUNTABILITY REQUIREMENTS STANDARDS 4 AND 5

The Office of Internal Accountability will review the accreditation standards to determine if there is a violation. The following consequences will be implemented for violations of the financial accountability requirements and accreditation standards.

A. LETTER OF WARNING: MINOR ACCOUNTING OR AUDIT VIOLATION

If a violation of financial accountability requirements has been verified, then the Office of Internal Accountability will notify the Office of Accreditation. The Office of Accreditation will issue a letter of warning to the school district and place the letter of warning in the district file. Four (4) consecutive violations of the same process standard reported to the Office of Accreditation will result in a citation placed on the district's Accreditation Record Summary. (See Section B below.)

B. CITATION OF NONCOMPLIANCE ON RECORD WITH NO IMMEDIATE ACTION TO DOWNGRADE THE ACCREDITATION STATUS

When four (4) consecutive violations of the same process standard have been verified, then the Office of Internal Accountability will notify the Office of Accreditation. A citation of noncompliance will be placed on the district's Accreditation Record Summary, and the Office of Accreditation will notify the district superintendent and school board chairperson of this action. No immediate action to downgrade the district's accreditation status will be recommended. The deficiencies will remain on record until the district has successfully demonstrated compliance with all financial accountability requirements and accreditation standards.

If the deficiencies remain on record at the time annual accreditation statuses are assigned, the district's accreditation status will be downgraded, and the district will be required to develop a corrective action plan to address the deficiencies.

C. CITATION OF NONCOMPLIANCE ON RECORD WITH A RECOMMENDATION TO IMMEDIATELY DOWNGRADE THE ACCREDITATION STATUS

Any verified violations of financial accountability requirements that are considered to be a serious financial condition as defined by the Office of the State Auditor will result in a recommendation to immediately downgrade the district's accreditation status. When the Office of Internal Accountability has determined that a verified violation of financial accountability requirements is of such serious nature that immediate action is warranted, the Office of Accreditation will be notified. The Office of Accreditation will note the citation of noncompliance on the District's Accreditation Record Summary and notify the district superintendent and school board chairperson of this action. The citation of noncompliance will be presented to the Commission on School Accreditation with a recommendation to immediately downgrade the District's accreditation status.

Commission Takes Action to Immediately Downgrade the Status. If the Commission takes action to immediately downgrade the accreditation status, the district will be required to develop a corrective action plan to address the deficiencies. The deficiencies will remain on record until the

district has successfully demonstrated compliance with all financial accountability requirements and accreditation standards.

Commission Does Not Take Action to Downgrade the Status. If the Commission does not take immediate action to downgrade the accreditation status, the deficiencies will remain on the District's Accreditation Record Summary until the district has successfully demonstrated compliance with all financial accountability requirements and accreditation standards. If the deficiencies remain on record at the time annual accreditation statuses are assigned, the district's accreditation status will be downgraded, and the District will be required to develop a corrective action plan to address the deficiencies.

GLOSSARY

The following definitions are established for the purpose of implementing the *Mississippi Public School Accountability Standards* established by the State Board of Education and authorized under Miss. Code Ann. §§ 37-17-1 through 13 and §§ 37-18-1 through 7.

ACADEMIC CORE

Required course offerings in which specific skills contained in the *Mississippi College- and Career-Readiness Standards* and *Mississippi Curriculum Frameworks* must be taught. Subjects in the academic core are English/language arts, mathematics, science, social studies, foreign languages, and arts.

ACADEMIC YEAR

The amount of time that must be scheduled in the educational calendar and that consists of a minimum of 180 teaching days. (See *teaching day*.) Two (2) of the 180 days may be 60% days provided that there are 198 minutes of actual instruction, and the remainder of each day is used for professional development and/or testing.

ACCELERATED COURSES

Courses designed for those students who can master the general curriculum and engage in more in-depth study of additional skills.

ACCOUNTABILITY SYSTEM

The entire process that holds all stakeholders (students, parents, teachers, principals, superintendents, and school boards) accountable for student achievement (growth and achievement). The accountability system includes the statewide assessment system, individual student accountability standards (grade level benchmarks and graduation requirements), an accreditation model that includes a system of rewards and sanctions for both school districts and individual schools, and procedures for interventions in Schools At-Risk and schools that fail to improve over time.

ACCREDITATION RECORD SUMMARY

A continuous record maintained on each school district in the state reflecting the extent to which accreditation requirements are met and used as the basis for assigning annual accreditation statuses. The Accreditation Record Summary is updated as citations of noncompliance with requirements are added or deleted, and school district officials are notified in writing of such.

ACCREDITATION STANDARDS

The performance-based accreditation system for public schools that holds school districts accountable for process standards and individual schools accountable for performance standards (growth and achievement).

ACCREDITATION STATUS

The annual status for a school district assigned by the Commission on School Accreditation and approved by the State Board of Education based on compliance with process standards using verified accreditation data from the previous school year. The accreditation statuses are Accredited, Probation, and Withdrawn. (See Accreditation Policy 2.3.)

ADEQUATE YEARLY PROGRESS (AYP)

The model or formula specified in *No Child Left Behind* (NCLB) for determining whether schools and school districts have met annual achievement criteria.

ADMINISTRATOR

Any staff member employed by a school board who is assigned the responsibility for coordinating, directing, supervising, or otherwise administering programs, services, and/or personnel under the auspices of the program, school, or district.

ADVANCED PLACEMENT (AP)

A program of college level courses and examinations for secondary school students administered by the College Board, 3700 Crestwood Pkwy. NW, Suite 700, Duluth, GA 30096, Telephone (866) 392-4088. High schools providing advanced placement courses must follow guidelines published by the College Board.

ALTERNATIVE SCHOOL

A public elementary/secondary school that addresses needs of students that typically cannot be met in a regular school, provides nontraditional education, serves as an adjunct to a regular school, and falls outside of the categories of regular education, special education, or career technical education. Students who are placed in an alternative school will remain enrolled in the school they would normally attend if not placed in an alternative school program. Test results for students placed in an alternative school program will be reported at the school the student would normally attend. (See 7 Miss. Admin. Code Pt. 3, Ch. 36)

ALLOCATED TIME

A scheduled period of time that provides for the achievement of prescribed objectives. The schedule of allocated instructional time should be in written form showing time designated for activities during the school day, week, month, or year.

ANNUAL FINANCIAL AUDIT REPORT

The report issued at the close of each fiscal year by a private Certified Public Accountant (CPA) under the guidelines of the Office of the State Auditor, and approved by the Office of the State Auditor, bearing the official opinion on the financial statements and internal processes of the school district.

ANNUAL PERFORMANCE CLASSIFICATION

See School Performance Classification.

APPEAL

An appeal made to the State Board of Education following a hearing before the Commission on School Accreditation or the Commission's representative. The appeal is on the record made before the Commission's representative or the Commission. Upon written application, the State Board of Education may consider new factual evidence.

ASSISTANT TEACHER

A school district employee assigned to assist a licensed teacher and who works under the direct supervision of a licensed teacher.

ATTENDANCE CENTER

A school in a school district that is located on one (1) school site and has one (1) principal administering the educational program for all the grades in the school.

BASIC SKILLS

Specific learning objectives that represent the most fundamental knowledge in the areas of reading, language arts, and mathematics.

CARNEGIE UNIT

A standard measure of high school work indicating the minimum amount of time that instruction in a subject has been provided. Awarding of one (1) Carnegie unit indicates that a minimum of 140 hours of instruction has been provided in regular and laboratory classes over a school year; awarding of one-half (½) Carnegie unit indicates that a minimum of 70 hours has been provided. (See Process Standard 13.2 for exceptions.)

CLASSROOM

A school room in which student instruction takes place.

COMPULSORY SCHOOL AGE CHILD

A child who has attained or will attain the age of six (6) years on or before September 1 of the calendar year and who has not attained the age of seventeen (17) years on or before September 1 of the calendar year; and shall include any child who has attained or will attain the age of five (5) years on or before September 1 and has enrolled in a full-day public school kindergarten program. Provided, however, that the parent or guardian of any child enrolled in a full-day public school kindergarten program shall be allowed to disenroll the child from the program on a one-time basis, and such child shall not be deemed a compulsory-school-age child until the child attains the age of six (6) years. (See Miss. Code Ann. § 37-13-91.)

CONSERVATORSHIP

A state of emergency in a district declared by the governor which gives the State Board of Education several options for action as described in Miss. Code Ann. § 37-17-6.

CORRECTIVE ACTION PLAN

A plan to correct deficiencies on record that shall be developed by the Mississippi Department of Education, in conjunction with the school district, when a school district is assigned a *PROBATION* accreditation status.

CORRESPONDENCE COURSE

Independent study carried on through lessons and exercises that are provided to non-resident students by approved university extensions. (See the *Approved Courses for Secondary Schools in Mississippi*.)

CREDIT RECOVERY

A course-specific, skill-based learning opportunity for students who have previously been unsuccessful in mastering content/skills required to receive course credit or earn promotion. Any LEA who provides a Credit Recovery Program shall develop and implement a Credit Recovery Program that has been adopted by the school board and that includes rules, regulations, and processes.

CRITERION-REFERENCED TEST (CRT)

A test designed to reveal what a student knows, understands, or can do in relation to specific performance objectives. CRTs are used to identify student strengths and weaknesses in terms of specific knowledge or skills that are goals of the instructional program.

CURRICULUM

The course content listed in the *Mississippi Curriculum Frameworks*.

DAYS

The number of days refers to calendar days unless otherwise specified.

DEPARTMENTALIZED CLASS

A class in which an educator teaches one (1) or more core academic subjects to more than one (1) group of students.

DEVELOPMENTAL COURSE

A course designed to be taught in any grade 7-12 (or any combination of grades 7-12 served within a school) which does not appear as an approved course in the current edition of the *Approved Courses for the Secondary Schools of Mississippi* but has received approval to be taught in a school district during the developmental process.

DEFICIENCY

The failure of a school district to comply with an accreditation requirement.

DIPLOMA

See Standard Diploma.

DIRECT INSTRUCTION

Act or process in which a teacher is actually guiding (instructing) students toward achieving specific learning objectives.

DISTANCE LEARNING COURSES

Courses utilizing telecommunications technologies including satellites, telephones, and cable-television systems to broadcast instruction from a central site to other classrooms.

DISTRICT LEVEL ACCREDITATION

The accreditation status of all public school districts based on compliance with process standards as determined annually by the Commission on School Accreditation. Annual accreditation statuses are assigned in the fall of each school year and are based on verified accreditation data from the previous school year.

DROPOUT

A student who leaves a school at any time and for any reason, except death, before graduation or completion of a program of studies and without transferring to another school.

EARLY CHILDHOOD EDUCATION PROGRAM

Kindergarten and assistant teacher programs that comply with *Mississippi Kindergarten Guidelines*, *Mississippi Elementary School Assistant Teacher Program Regulations*, and *Mississippi Reading Improvement Program Regulations* approved by the State Board of Education and published by the Mississippi Department of Education. (See also *kindergarten* and *pre-kindergarten*.)

EFFECTIVE INSTRUCTION

Practices and behaviors designed to establish and implement conditions that promote student learning.

ELEMENTARY SCHOOL

Primary, elementary, and intermediate division of the educational system within the school district comprising grades/levels Pre-K through 6 or Pre-K through 8 or any combination of such grades.

ELIGIBLE STUDENTS

Students who are required to be tested in the Mississippi Statewide Assessment System. A student may be eligible for testing based on the student's grade level enrollment in a specific course. All eligible students must be tested. (See Process Standard 22.)

ENRICHMENT PROGRAM

An academic course with defined objectives, evaluation criteria, and mastery requirements that exposes students to material or instruction that would not otherwise be part of a student's curriculum during the normal sequence of his/her educational experiences.

EVALUATION

Formal appraisal (assessment) of educational experiences, including the performance of schools, educational programs, personnel, and students. Evaluations are conducted to determine strengths and areas which need improvement and may involve the use of various measurements designed to appraise the effects of educational experiences.

EVALUATION TEAM

A trained evaluation team assigned to a School At-Risk within fifteen (15) days after notification that the school has been designated as a School At-Risk. The evaluation team shall be independent of the school being evaluated and may include employees of the State Department of Education. The team may include retired educators who have met certain standards and have completed all necessary training.

EXIT EXAMINATIONS

Assessments required for students to graduate from high school.

EXTRACURRICULAR ACTIVITIES

School district sponsored student activities that require administrative supervision and student involvement outside the allocated time for instruction. Student participation in extracurricular activities may be noted on the student's transcript, but academic credit may not be awarded.

EXTENDED YEAR PROGRAM

A program of instruction offered by the district after the close of the regular academic year that is designed for students who need extra time to complete course objectives/requirements (not ESY provided through special education programs).

FAILING SCHOOL

A school performance classification based on the Letter Grade achieved by the school.

FAILING SCHOOL DISTRICT

A district that fails to meet both the absolute student achievement standards and the rate of annual growth expectation standards as set by the State Board of Education for two (2) consecutive years. A school district that has been designated as failing as defined by the State Board of Education shall also establish a community-based prekindergarten through higher education council comprised of a broad spectrum of the community and is required to publicly report progress to the community as a whole. (See Miss. Code Ann. § 37-18-5.) (See Process Standard 12.)

FINANCIAL EXCHANGE TRANSFER SYSTEM (FETS)

The system used to collect financial data from each district at the close of the fiscal year.

FRAMEWORKS

Competencies (required learning standards for all students) and objectives (learning outcomes indicating how the competencies can be fulfilled) approved by the State Board of Education.

FULL ACADEMIC YEAR

This term refers to (approximately) 70% of the instructional time from the beginning of the school year to the time students are assessed. Only students who have been enrolled in the school for a full academic year (approximately 70%) are included in the *Mississippi Statewide Accountability System*.

FUNCTIONAL LITERACY SKILLS

Specific learning objectives that represent the application of basic skills to everyday life situations and that are tested through the Functional Literacy Examination.

GENERAL EDUCATION DEVELOPMENT (GED) OPTION

GED Option is an integral component of a high school curriculum that provides another option to obtain a high school level credential. The GED Option is targeted for a subgroup of students who have the capabilities to complete high school requirements, but for a variety of adjustment and life circumstance obstacles are behind in the credits needed to graduate with their class and are at risk of leaving school without a high school credential. The GED Option provides these students a viable second opportunity to stay in school and acquire the necessary high school level knowledge and skills to pass the GED Tests and earn a high school diploma/credential within the same time frame as their peers. (See the *American Council on Education (ACE) Guidelines*.)

GENERALLY ACCEPTED AUDITING STANDARDS

The rules by which a Certified Public Accountant (CPA) must conduct himself while performing an audit of a company or government entity's financial statements. The American Institute of Certified Public Accountants establishes these guidelines.

GRADE LEVEL PROFICIENCY STANDARD

A performance standard that establishes the percentage of students proficient in each school based on a demonstrated range of performance in relation to content as reflected in the *Mississippi Curriculum Frameworks*.

GROWTH EXPECTATION

A reasonable expectation for improved student academic achievement based on annual assessment data and using a psychometrically approved formula to track progress. The formula used to calculate the growth expectation will result in a composite score each year for each school.

GUIDANCE COUNSELOR

See School Guidance Counselor.

HALF-TIME

Any staff person who devotes 50% of the instructional schedule to the assigned duties.

HEARING

The process by which all controversies involving the accreditation levels of school districts are initially heard by a duly authorized representative of the Commission before whom a complete record is made. (See Accreditation Policy 6.0.)

HIGHLY QUALIFIED

See the *Guidelines for Mississippi Educator Licensure*.

HIGH SCHOOL

The secondary division within the educational system of the school district comprising grades 9-12 or any combination of such grades.

HIGHEST LEVELS OF ACCREDITATION STANDARDS

A school or district with a Letter Grade in the top two (2) ranges of the accountability rating system will be identified as meeting the highest levels of accreditation standards.

INNOVATIVE PROGRAMS AUTHORIZED BY THE STATE BOARD OF EDUCATION

Programs of study approved by the Mississippi Board of Education that are designed to provide innovative approaches to teaching and learning. These programs are designed to better prepare students for postsecondary education and direct entry into the workplace.

INSTRUCTIONAL STAFF

Employees of a school district who are professionally trained and licensed to provide instruction and services to students enrolled in the schools of the district.

INVESTIGATIVE EVALUATION (COMPLAINT AGAINST DISTRICT)

An evaluation that is conducted in a school district in response to a formal written complaint. All formal complaints made against schools or districts must be submitted to the Commission in writing and bear the signature of the individual(s) filing the complaint. The written complaint shall contain specific details concerning alleged violations. When the complaint is received, the superintendent is notified in writing of the nature of the complaint and informed that the district is subject to an unannounced audit to investigate the allegations. If the complaint addresses an area over which the Commission has no authority, the individual filing the complaint is notified. (See Accreditation Policy 5.0)

KINDERGARTEN

That portion of the elementary school serving children who have reached the age of five (5) years on or before September 1.

KINDERGARTEN INSTRUCTIONAL DAY

At this level, the school day. (For specific requirements, see the current edition of the *Mississippi Kindergarten Guidelines*.)

LAB-BASED SCIENCE COURSE

A science course in which at least 20% of the instructional time is required to include laboratory experiences.

LABORATORY

Room or rooms basically/appropriately equipped and used by students for the supervised study of some branch of science or the application of scientific principles.

LEARNING CENTER

An area in the kindergarten classroom that contains a collection of materials and activities to introduce, teach, reinforce, and/or enrich a skill or concept.

LEARNING CENTER ACTIVITIES

Activities housed in the kindergarten learning centers that promote student participation through developmentally appropriate instructional techniques.

LEARNING OBJECTIVES

Statements of what a student will know, feel, or do when a course is completed.

LIBRARY MEDIA CENTER

A specially designed space in each school equipped for centrally housing an organized collection of materials and equipment representing a broad range of current learning media, including instructional technology. The facility contains areas for individualized study and for large and small group instruction. The facility is organized and administered to function as a learning laboratory where the use of all media is purposeful, planned, and integrated with the educational program and instructional processes of the school. (Reference the current *Mississippi School Library Media Guide*.)

LIBRARY RESOURCES

Includes all print materials, non-print materials, and other current multimedia resources and technologies that meet the curriculum goals, needs, and interests of the school community.

LOCAL EDUCATION AGENCY (LEA)

A local education agency is any one (1) of the 144 public school districts in Mississippi.

LOWEST PERFORMANCE LEVEL OF ACCREDITATION STANDARDS

A school or district that is identified as failing after one (1) year or identified as at-risk of failing or low performing for two (2) consecutive years will be identified as accredited at the lowest performance levels.

MIDDLE SCHOOL

A school with any configuration of intermediate grades 4-8 whose principal may be licensed as an elementary school administrator or a secondary school administrator.

MISSION STATEMENT

A school district's statement of purpose that is used in strategic planning as the basis for educational decisions.

MISSISSIPPI EARLY EXIT DIPLOMA

A performance-based diploma available to students on a voluntary basis beginning in the 2013-2014 academic year. In order to qualify, students must earn required Carnegie units and must meet College & Career qualification scores in all content areas. (See Appendix A-4.)

MISSISSIPPI STATEWIDE ASSESSMENT SYSTEM

A program of statewide assessment designed to improve the operation and management of public schools by providing educators, parents, students, legislators, and the general public with meaningful achievement data from the school, district, and state levels. The program consists of two (2) components: (1) a norm-referenced achievement testing program to be administered in selected grades and (2) a

criterion-referenced testing program which assesses basic skills and knowledge and application of selected high school subjects.

MISSISSIPPI OCCUPATIONAL DIPLOMA

The State Board of Education shall develop and issue criteria for a Mississippi Occupational Diploma for students having a disability as defined by the federal *Individuals with Disabilities Education Act*. {See Miss. Code Ann. § 37-16-11(2) and Appendix G.}

MISSISSIPPI VIRTUAL PUBLIC SCHOOLS

The Mississippi Virtual Public School Program is a free web-based educational program offered by the Mississippi Department of Education to provide Mississippi students with access to a wider range of course work. Technology will be used to deliver instruction to students via the Internet in a virtual or remote setting.

NORM-REFERENCED TEST (NRT)

A test that provides information about the performance of examinees relative to other examinees. A norm-referenced test yields a measure of relative performance of the individual or group by comparison with the performance of other individuals or groups taking the same test.

ON-LINE COURSE

Instruction delivered via the Internet. (See the *Approved Courses for Secondary Schools in Mississippi*.)

ON-SITE

Any geographical location selected by the local professional development committee for a professional development activity as planned by the school district and provided during contractual time at the school district's expense.

ON-SITE EVALUATIONS

On-site evaluations or investigations of a school district that the State Board of Education, the State Superintendent of Education, or the Commission on School Accreditation has the authority to call at any time. If deficiencies are found in meeting accreditation standards, the superintendent is notified in writing and given thirty (30) days from the receipt of notification to provide a written response. The report of findings is filed in the current accreditation records in the Office of Accreditation. (See Accreditation Policy 5.0)

PERFORMANCE CLASSIFICATIONS

See School Performance Classification.

PERFORMANCE STANDARDS

Standards for individual schools and districts based on student achievement data using established proficiency levels and a reasonable expectation for annual growth in student achievement. Output or product standards that address selected components of the statewide testing program and other outcome measures related to the performance of a school or district.

PERSONNEL ACCREDITATION DATA REPORTING SYSTEM

School district employee information required by the Mississippi Department of Education on an annual basis. This information is transmitted electronically, reflects the daily schedule of each employee, and is used to determine district compliance with a number of accreditation standards.

PHYSICAL EDUCATION

The instructional requirements for physical education are specified in the *Fitness through Physical Education Framework*. Elective units for graduation include participation in interscholastic athletic activities that meet the instructional requirements specified in the *Fitness through Physical Education Framework* and that are sanctioned by the Mississippi High School Activities Association. Beginning with school year 2008-2009 (seniors of 2011-2012), one-half (½) Carnegie unit in physical education is required for graduation.

PLANNING PERIOD

An unencumbered period of time during the teaching day or week required for each classroom teacher except career technical teachers who teach in time blocks of fifty (50) minutes or more. (See Process Standard 30.)

POLICY

A statement of official intent adopted by the school board and recorded as official action in school board minutes. The school district must comply with all school board policies.

PRE-KINDERGARTEN PROGRAM

Instructional program serving children who have reached the age of four (4) years on or before September 1.

PRINCIPAL

The individual who is responsible for the total program of a school and who holds valid and appropriate administrator certification.

PROBATION STATUS

An accreditation status assigned to a district that complies with fewer than 100% of the Accreditation Policies and Process Standards. The district will be required to develop a corrective action plan to address the deficiencies. (See Accreditation Policy 2.8)

PROCEDURE

A statement of processes by which policies, regulations, and standards are carried out.

PROCESS STANDARDS

Input standards that address accepted educational principles and practices believed to promote educational quality. (See Accreditation Policy 2.2.)

PROFESSIONAL DEVELOPMENT

The growth-promoting learning process that empowers stakeholders (teachers, administrators, staff, and other school personnel) to improve the educational organization.

PROFESSIONAL DEVELOPMENT PLAN FOR EDUCATORS

As part of the school improvement plan for a School At-Risk, the professional development plan that is prepared and implemented in accordance with Section § 37-18-7 for those school administrators, teachers, or other employees who are identified by the evaluation team as needing improvement.

PROFESSIONAL STAFF

Any employee of the school district whose assigned duties require state licensure.

PROFICIENCY

An established criterion level based on the demonstrated range of performance in relation to content as reflected in the *Mississippi Curriculum Frameworks*.

PUBLIC NOTICE

After a state of emergency has been declared for a school district, the public notice that the Commission on School Accreditation files at least once a week for at least three (3) consecutive weeks in a newspaper published within the immediate or general vicinity of the affected school district in accordance with Miss. Code Ann. § 37-17-6(12).

REMEDIAL INSTRUCTIONAL PROGRAMS

Programs designed to provide interventions and supports for students who have been unsuccessful in mastering content/skills.

SCALED SCORE

A transformation of the raw score to have a desired mean and standard deviation for ease of interpretation. Scaled scores provide meaningful year-to-year comparisons, but they cannot be used across subject areas or subtests. Scaled scores represent approximately equal units on a continuous scale. Therefore, a difference of five (5) points between two (2) students' scores represents the same amount of difference in performance wherever it occurs on the scale. Scaled scores can be designed to have any range and midpoint (e.g., 200 through 500, with a midpoint of 350).

SCHOOL

An institution that exists for the purpose of teaching school-aged children, consists of one (1) physical plant located on one (1) school site, includes instructional staff members and students, and is in session each school year.

SCHOOL AT-RISK

A school level performance classification. Previously defined as priority schools. A school shall be identified as a School At-Risk and in need of assistance if the school: (a) does not meet its growth expectation and has a percentage of students functioning below grade level as designated by the State Board of Education; (b) is designated as a Failing School; or (c) is designated as At-Risk of Failing or Low Performing for two (2) consecutive years.

SCHOOL BOARD

As used in this document, the policy-making body of a public school district.

SCHOOL DAY

That portion of the calendar day that includes the teaching day, intermissions, and any additional time included in the employee contract. School day defines the normal working day for employees.

SCHOOL GUIDANCE COUNSELOR

School guidance counselors shall provide comprehensive counseling services, including the following: academic and personal/social counseling; student assessment and assessment counseling; career and educational counseling; individual and group counseling; crisis intervention and preventive counseling; referrals to community agencies; educational consultations and collaboration with teachers, administrators, parents, and community leaders; educational and career placement services; follow-up counseling services; conflict resolution; and other counseling duties or other duties as assigned by the school principal. No individual shall be employed as a school guidance counselor without a minimum of a Master's degree in Guidance and Counseling, or in an emergency situation, an appropriate certification

as determined by the Commission on Educator Licensure. School guidance counselors shall abide by the American School Counselor Association Code of Ethics. (See Miss. Code Ann. § 37-9-79.)

SCHOOL IMPROVEMENT PLAN

A plan that a School At-Risk is required to develop based on the findings of the evaluation team report and the results of a public meeting. The Mississippi Department of Education and evaluation team leader shall assist the school principal and other local school officials in the development of a school improvement plan. A local parents/citizens advisory council shall be established by the evaluation team at the school to provide input and guidance into the development of the school improvement plan and its evaluation. The school improvement plan shall be developed and approved by the principal of the School At-Risk, the superintendent of the local school district, the local school board, and a majority of the teachers of the school.

SCHOOL PERFORMANCE CLASSIFICATION

A classification assigned to a school based on student achievement and growth. (See Accreditation Policy 3.3.)

SCHOOL SAFETY PLAN

The foundation document a school uses to maintain a safe and secure educational environment.

SCHOOL TERM

See Academic Year.

SCHOOL YEAR

See Academic Year.

SECONDARY SCHOOL

A school that contains any or all of grades 9 through 12 and may include grades 7 and 8.

SELF-CONTAINED CLASS

A classroom in which an educator teaches all core subjects to a group of students.

SHOW CAUSE HEARING

The hearing that the Commission on School Accreditation conducts to allow the officials of the affected district to present evidence or other reasons as to why the accredited status should not be withdrawn. This occurs before the Commission recommends to the State Board of Education that the accredited status of a district be withdrawn in accordance with Miss. Code Ann. § 37-17-6(11)(a).

SPECIAL DIPLOMA OR CERTIFICATE

Upon meeting all applicable requirements prescribed by the district school board, students with disabilities shall be awarded a special diploma in a form prescribed by the state board. Any such student who meets all special requirements of the district school board for his exceptionality, but is unable to meet the appropriate special state minimum requirements, shall be awarded a special certificate of completion in a form prescribed by the state board. (See Miss. Code Ann. § 37-16-11.)

SPECIAL SCHOOL

A school that serves students with disabilities in accordance with *Individuals with Disabilities Education Act* (IDEA) and applicable state statutes and regulations.

SPECIAL TEST AUDITS

Audits that include reports regarding potential testing irregularities or test security violations and audits that are regularly conducted on-site before, during, and following scheduled assessments to promote the integrity and security of the Mississippi Assessment System.

STANDARD DIPLOMA

A standard high school diploma is awarded to a student who has met all the requirements established by the local board of education and by the State Board of Education. (See Miss. Code Ann. § 37-16-7.)

STANDARDS

Criteria by which school districts and schools are assessed. The two (2) types of standards used in the performance-based accreditation system are performance and process.

STATEWIDE TESTING PROGRAM

See Mississippi Statewide Assessment System.

STUDENT ACTIVITIES

School district sponsored activities which require administrative supervision and student involvement during the teaching day. (See *teaching day*.) Student participation in extracurricular activities may be noted on the student's transcript, but academic credit may not be awarded.

STUDENT SUPPORT PERSONNEL

A professional qualified to offer student support services (e.g., psychologist, guidance counselor, social worker, psychometrist, etc.).

STUDENT SUPPORT PROGRAM

A program of activities designed to assist and/or complement instructional activities for all students through the following types of activities: planned counseling, consultation, student appraisal, diagnosis, remediation, and follow up.

SUBJECT AREA

A division or field of organized knowledge for which state curriculum guidelines have been prepared.

SUBJECT AREA TESTS

Assessments which measure content knowledge in the subject areas of Algebra I, English II, Biology I, and U.S. History from 1877.

SUMMER SCHOOL PROGRAM

A program of instruction offered by the district during the summer months after the close of the regular academic year. The program of instruction is designed for students who need extra time to complete course requirements and/or for students who wish to enroll in new courses/subjects.

SUPERINTENDENT

The school board employee who is responsible for administering the operations and activities of schools within the district and for implementing the decisions of the school board. The superintendent holds a valid Class AA license in school administration.

SUPERVISOR

An individual who provides direct assistance to instructional and support staff and who holds a valid Class AA license in supervision or administration.

SUPPORT STAFF

Persons employed by an educational organization to provide services to students and staff.

TEACHER

Any person employed by the school district who is required by law to obtain a teacher's license from the State Board of Education and who is assigned an instructional area of work as defined by the Mississippi Department of Education (e.g., employment in an official capacity for the purpose of imparting knowledge, skills, information, and ideas to students in an instructional setting). (See Miss. Code Ann. § 37-19-1.)

TEACHING DAY

A day in which a minimum of 330 minutes of instruction and/or evaluation and/or district approved group testing is provided. Exceptions are days with fewer than 330 instructional minutes that are part of an instructional week of at least 27.5 hours.

TEST AUDITS

See Special Test Audits.

TEXTBOOK

Any medium or manual of instruction which contains a systematic presentation of the principles of a subject and which constitutes a major instructional vehicle for that subject. Whenever any book under contract is displaced by a new adoption, the board may continue to require the schools to use the recently purchased books from any previous adoption; however, such period of use shall not exceed four (4) years. {See Miss. Code Ann. § 37-43-31(2) and refer to the current edition of the *Textbook Administration Handbook Rules and Regulations*.}

UNQUALIFIED OPINION

An opinion is said to be unqualified when the auditor concludes that the financial statements give a true and fair view in accordance with the financial reporting framework used for the preparation and presentation of the financial statements. This type of report is issued by an auditor when the financial statements presented are free of material misstatements and are represented fairly in accordance with the Generally Accepted Accounting Principles (GAAP).

WITHDRAWN STATUS

The status of a school district when the accreditation of the school district is withdrawn due to noncompliance with its corrective action plan or as a result of action taken by the Commission on School Accreditation. The status is listed as "Withdrawn Not Accredited" and the record of that district will continue to be maintained. (see Accreditation Policy 2.3)