



Mississippi Department of Education
2017-18 Superintendent's Annual Report

MISSISSIPPI SUCCEEDS

CAREY M. WRIGHT, ED.D. State Superintendent of Education

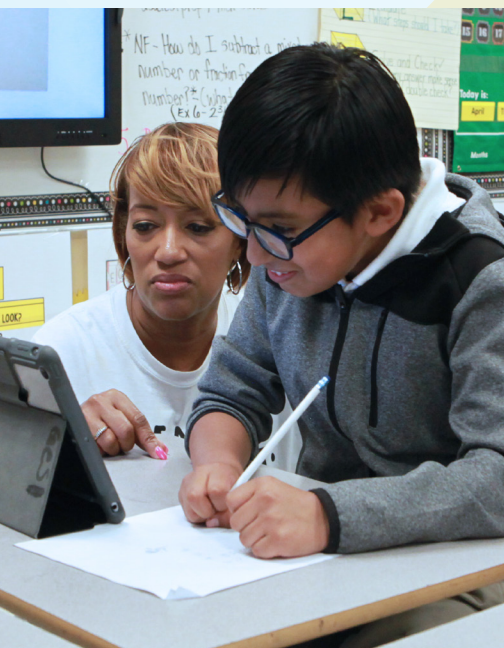


MISSISSIPPI
DEPARTMENT OF
EDUCATION

Ensuring a bright future for every child

MISSISSIPPI DEPARTMENT OF EDUCATION

2017-18 SUPERINTENDENT'S ANNUAL REPORT



CAREY M. WRIGHT, ED.D. State Superintendent of Education

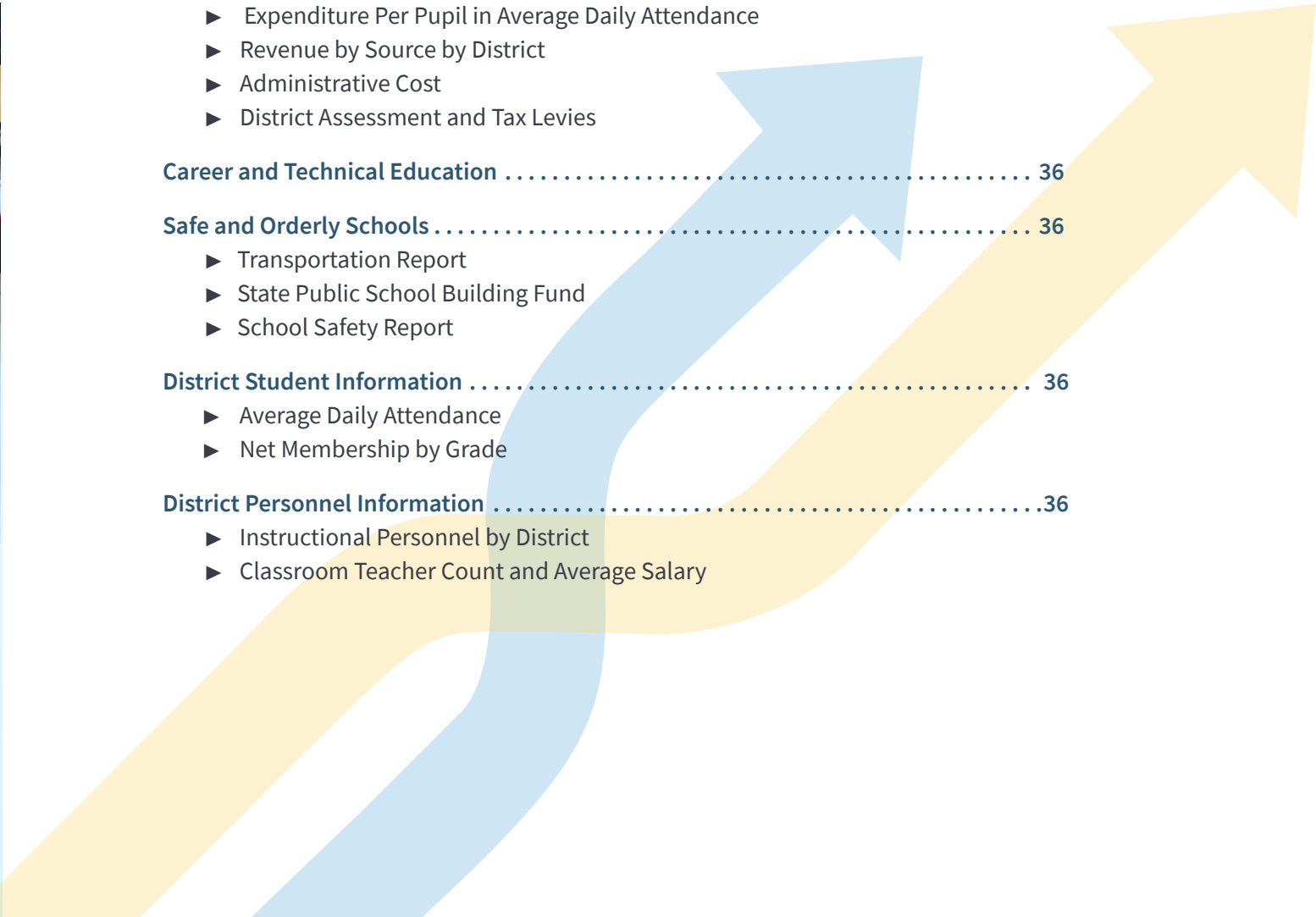
MISSISSIPPI DEPARTMENT OF EDUCATION
Post Office Box 771 • Jackson, MS 39205-0771
www.mdek12.org

Office of Communications and Government Relations • 601-359-3515
Office of Public Reporting • 601-359-3857

DESIGN BY MELISSA BANKS • PHOTOGRAPHY BY ANDY ROYES

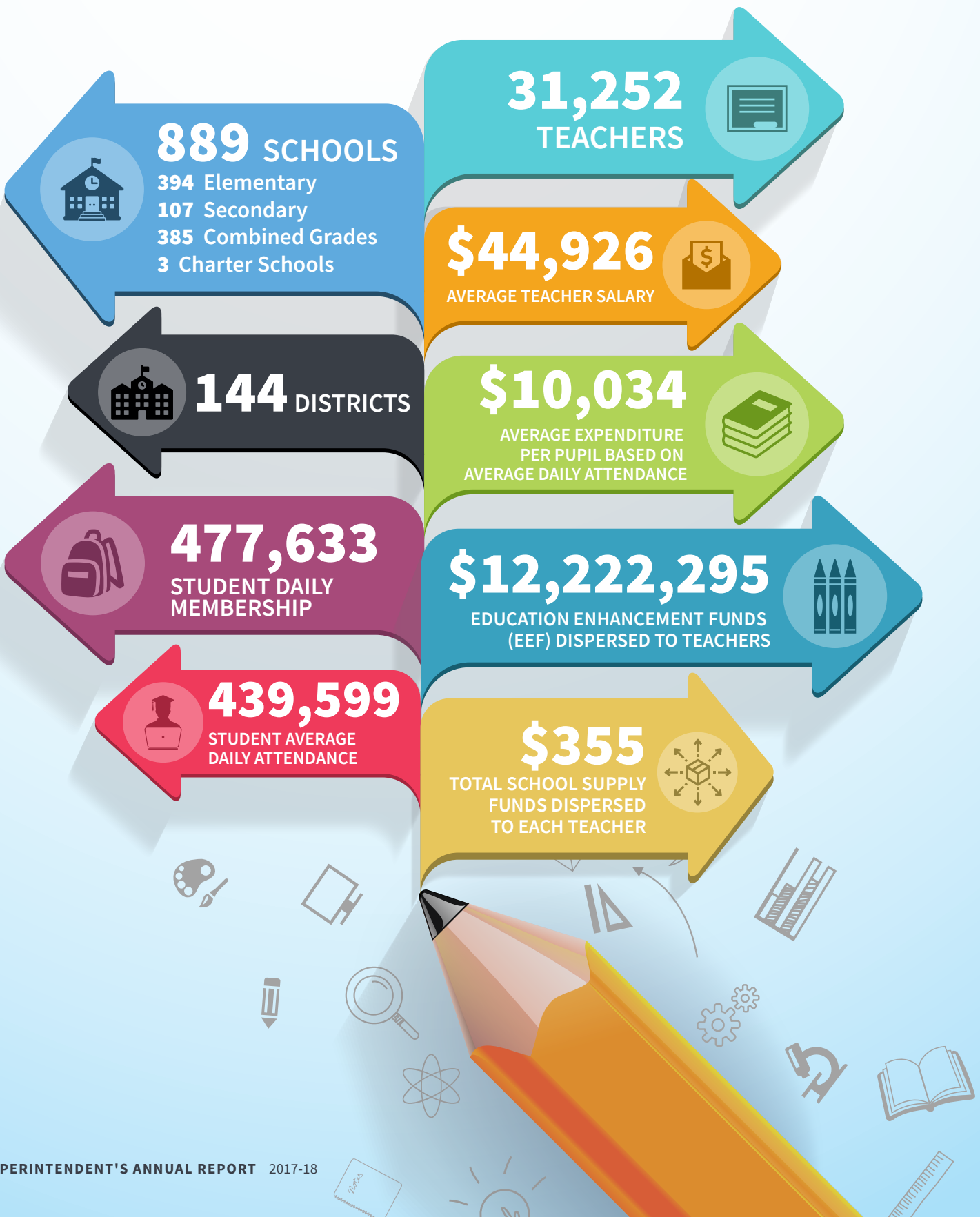
TABLE OF CONTENTS

- Facts and Figures 2
- Message from the State Superintendent of Education 3
- Mississippi State Board of Education 4
- Mississippi Succeeds 6
- Notable State and National Honors 23
- Initiatives..... 29
- Other Highlights..... 31
- District Financial Information 34**
 - ▶ Receipts for Public Schools
 - ▶ Expenditures for Public Schools
 - ▶ Charts: Federal, State and Local Sources Revenue and Expenditures for Public Schools
 - ▶ Expenditures for Public Schools by Functional Area
 - ▶ Expenditure Per Pupil in Average Daily Attendance
 - ▶ Revenue by Source by District
 - ▶ Administrative Cost
 - ▶ District Assessment and Tax Levies
- Career and Technical Education 36**
- Safe and Orderly Schools 36**
 - ▶ Transportation Report
 - ▶ State Public School Building Fund
 - ▶ School Safety Report
- District Student Information 36**
 - ▶ Average Daily Attendance
 - ▶ Net Membership by Grade
- District Personnel Information36**
 - ▶ Instructional Personnel by District
 - ▶ Classroom Teacher Count and Average Salary



FACTS AND FIGURES

2017-18



MESSAGE FROM THE

STATE SUPERINTENDENT OF EDUCATION

On behalf of the Mississippi State Board of Education, I am pleased to present the Annual Report of the State Superintendent of Education for the 2017-18 academic school year. In accordance with the requirements of Section 37-3-11 of the Mississippi Code of 1972, Annotated, this report contains pertinent financial, statistical and other important information at the state and local school district levels.

This report also includes details about the unprecedented academic success Mississippi students have achieved in recent years. The Mississippi State Board of Education, state elected leaders, the Mississippi Department of Education and local school districts have raised expectations for students and schools, and as a result, student achievement continues to rise.

The state's steady achievements in education demonstrate that substantial progress has been made, and I look forward to working with you to build upon this progress and to make significant achievement a reality for all students. I believe in the capacity of our students to achieve their highest goals and in the ability of our teachers and school leaders to guide them to a successful future.

Along with the members of the Board, the staff of the Mississippi Department of Education, and the students, teachers and school leaders of Mississippi, I appreciate your strong support of public education in our state. I look forward to our continued partnership in support of school districts as they prepare students to be successful in college, the workforce and life. If you would like to view this report online, please visit www.mdek12.org.

Sincerely,



Carey M. Wright, Ed.D.
**STATE SUPERINTENDENT
OF EDUCATION**



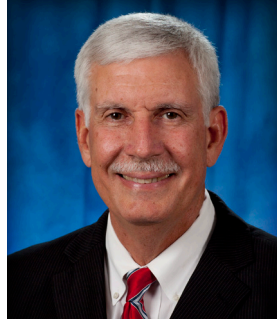
BOARD OF EDUCATION

The Mississippi State Board of Education's vision is to create a world-class educational system that gives students the knowledge and skills to be successful in college and the workforce, and to flourish as parents and citizens. The Board sets policies and standards that advance public education in Mississippi. The Governor appoints five Board members, and the Lieutenant Governor and Speaker of the Mississippi House of Representatives each appoint two Board members.



Jason S. Dean, Ph.D.
CHAIR

Term expires July 2024
At-Large Representative



Buddy Bailey
VICE-CHAIR

Term expires July 2023
Administrator
Representative



Rosemary G. Aultman

Term expires July 2022
At-Large Representative



Karen Elam, Ph.D.

Term expires July 2021
3rd Supreme Court
District Representative



Johnny Franklin

Term expires July 2025
1st Supreme Court
District Representative



John R. Kelly, Ph.D.

Term expires July 2020
2nd Supreme Court District
Representative



Charles McClelland

Term expires July 2019
At-Large Representative



Brittany Rye

Term expires July 2027
Teacher Representative



Sean Suggs

Term expires July 2026
At-Large Representative



Carey M. Wright, Ed.D.

State Superintendent
of Education

STRATEGIC PLAN

The Mississippi Department of Education is charged with supporting local school districts to help them attain the Mississippi State Board of Education’s vision and goals. The Board’s bold vision for a world-class education system and the agency’s philosophy of operating in the best interest of students drive the MDE’s work.

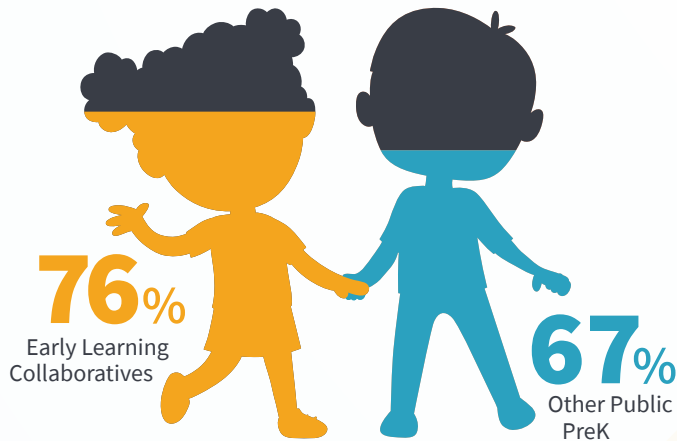
The Mississippi State Board of Education Strategic Plan sets the roadmap for continually improving public education in Mississippi. The plan describes the objectives and strategies the MDE employs to help local school districts achieve the Board’s vision and goals. The Board’s goals were created in 2014 and affirmed in 2016.

STRATEGIC PLAN GOALS

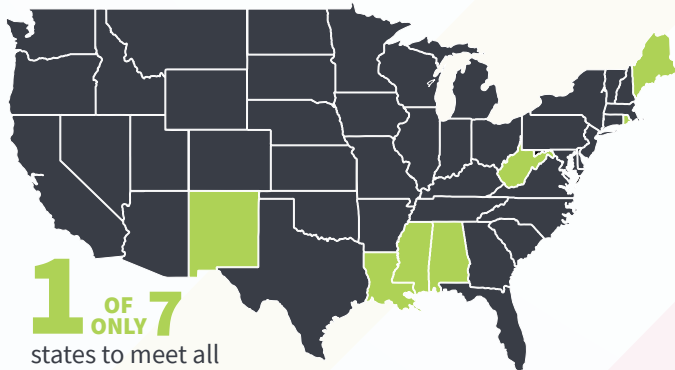


MISSISSIPPI SUCCEEDS

EARLY CHILDHOOD



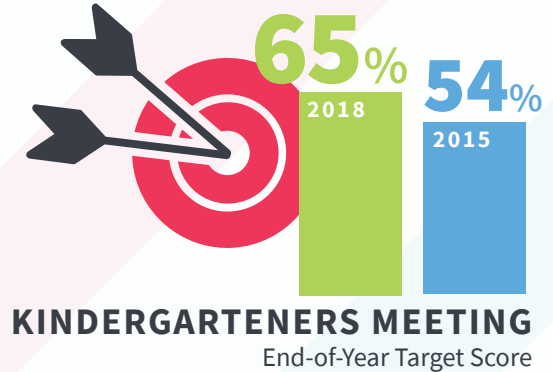
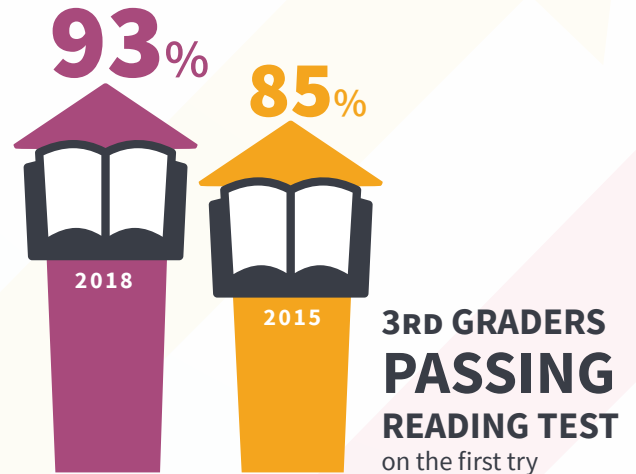
STUDENTS MEETING
Kindergarten-Readiness Score in 2018



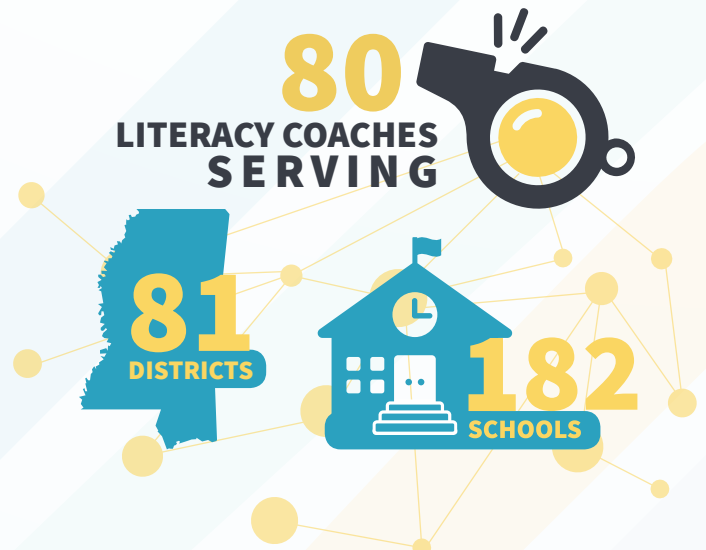
The Office of Early Childhood grew from **ONE PERSON** in 2015 to a team of **24 EXPERTS** thanks to a grant from



LITERACY



80 LITERACY COACHES SERVING



HIGH SCHOOL

1,092

2018

AP

SCHOLAR AWARDS NEARLY DOUBLE

AP scholar awards are given to students who earn qualifying scores on multiple AP exams

585

2015



EARLY COLLEGE HIGH SCHOOLS

expand from one in 2015 to five early college high schools and one middle college program in 2018



ACT[®]

ACHIEVEMENT

among the graduating class is higher than the junior class, which suggests students improve their scores when they retake the ACT as seniors

STUDENT ACHIEVEMENT

40%

33%

44%

31%



2018

2016

2018

2016

PROFICIENCY RATES

IMPROVE SIGNIFICANTLY

in English Language Arts and Mathematics

DISTRICT GRADES

29
DISTRICTS

INCREASED THEIR LETTER GRADES

from the previous school year

67%

DISTRICTS RATED C OR HIGHER

for the 2017-18 school year

MISSISSIPPI SUCCEEDS

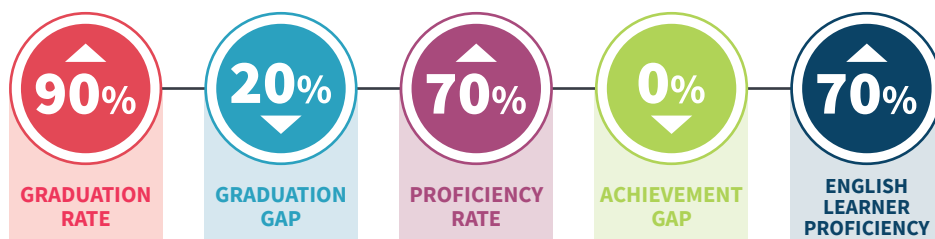
The federal Every Student Succeeds Act (ESSA) gave Mississippi the opportunity to develop a plan that would build upon the state's recent academic achievements. The **Mississippi Succeeds** plan expands the state's education reform efforts to improve opportunities and outcomes for all students. The plan sets specific targets for every student group to ensure equity and that all students are prepared for college and career. Setting targets for student achievement provides the opportunity to engage students, parents, community members, teachers, school leaders, and state leaders in conversation and work to help all Mississippi's students achieve these goals.

Mississippi's approved ESSA plan, called **Mississippi Succeeds**, reflects the deep and thoughtful engagement of stakeholders across our state, and it aligns Mississippi's education policy priorities with requirements to receive federal funds.

MISSISSIPPI SUCCEEDS KEY COMPONENTS

- ▶ Rigorous academic standards for all students
- ▶ Aligned assessments to measure student growth and proficiency
- ▶ An A-F accountability system to hold schools and districts accountable for meeting learning goals for all student populations
- ▶ Strategies for developing effective educators
- ▶ Supports for struggling schools and students

MISSISSIPPI SUCCEEDS 2025 GOALS



- **INCREASE** the statewide graduation rate to 90 percent
- **REDUCE** the graduation rate gap between students with disabilities and all students to 20 percent
- **INCREASE** student proficiency rate in English language arts and mathematics to 70 percent
- **ELIMINATE** the achievement gap between Black students and all students entirely
- **ENSURE** 70 percent of English learners are making expected progress toward English language proficiency

Read the complete
Mississippi Succeeds plan:
mdek12.org/SSE/essa

EARLY CHILDHOOD EDUCATION

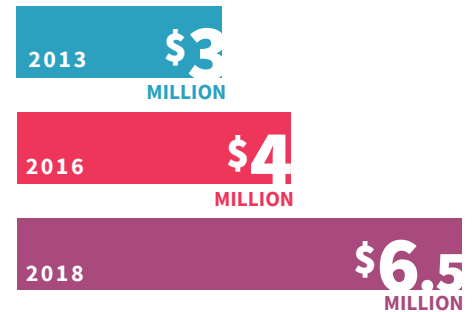
EARLY LEARNING COLLABORATIVES

Mississippi started building its first publicly funded early childhood education infrastructure in 2013 after the passage of the Early Learning Collaborative Act. The law provided \$3 million to establish a limited number of Early Learning Collaboratives (ELCs) in underserved areas throughout the state. The collaboratives are partnerships among school districts, Head Start agencies, child care centers, and non-profit organizations. Based on the immediate results just two years later, the Legislature increased funding to \$4 million in 2016 and to \$6.5 million in 2018. Fourteen ELCs serve approximately 2,140 pre-K students.

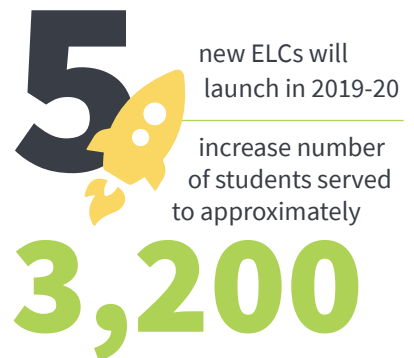
Five new ELCs will launch in 2019-20, which will increase the number of pre-K children served by ELCs to approximately 3,200.

Early Learning Collaboratives

- ▶ Canton Mississippi Early Learning Collaborative
- ▶ Clarke County Early Learning Partnership
- ▶ Coahoma County Pre-K Collaborative, Clarksdale
- ▶ Corinth-Alcorn-Prentiss Early Learning Collaborative, Corinth
- ▶ Greenwood-Leflore County Early Learning Collaborative, Leflore County
- ▶ Grenada Early Learning Collaborative
- ▶ Lamar County Early Learning Collaborative
- ▶ McComb Community Collaborative for Early Learning Success
- ▶ Monroe Early Learning Collaborative
- ▶ Petal Early Learning Collaborative
- ▶ Picayune School District Early Head Start
- ▶ Sunflower County Early Learning Collaborative
- ▶ Starkville Oktibbeha Early Learning Collaborative
- ▶ Tallahatchie Early Learning Alliance



LEGISLATIVE FUNDING
for Early Learning Collaborative Act



ELC ACHIEVEMENTS

- ELC students achieved the highest average score in spring 2018 on the statewide test administered in public pre-K classes at the end of the year to assess whether they are on track to be ready for kindergarten.

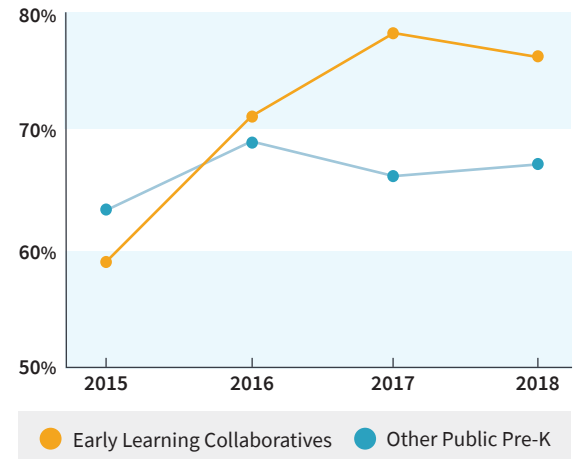
PRE-K STUDENTS	2018 AVERAGE SCORE
ELC students	573
Other public pre-K students	550

- ELC students achieve high levels each year, with the majority completing pre-K scoring at or above the target score for exiting pre-K. ELC students continue to outperform students in all other public pre-K programs.

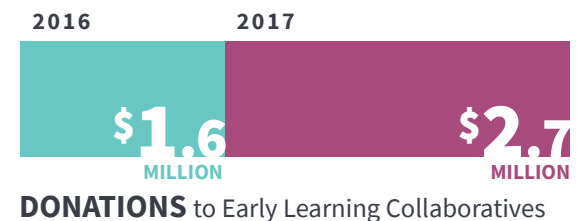
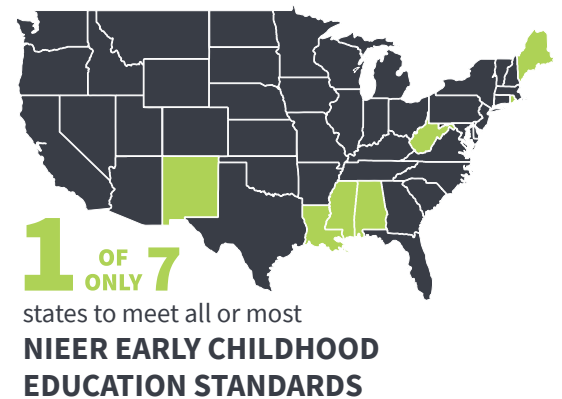
Students Meeting Kindergarten-Readiness Score

YEAR	ELC	OTHER PUBLIC PRE-K
2018	76%	67%
2017	78%	66%
2016	71%	69%
2015	59%	63%

- All 14 ELCs achieved the end-of-the-year average scores that indicate students are prepared for kindergarten.
- The National Institute for Early Education Research (NIEER) recognized Mississippi's ELCs in its 2015, 2016 and 2017 State of Preschool report. This makes Mississippi one of only seven states in the nation that meet all or most quality standards for early childhood education.
- Individuals or corporations donated close to \$2.7 million to Early Learning Collaboratives (ELCs) in 2017, an increase from \$1.6 million in 2016. Contributors are eligible to receive a 1:1 state tax credit for the donated amount up to \$1 million.

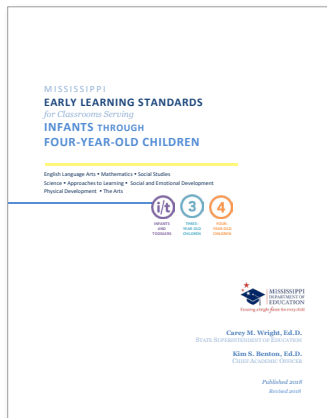


PERCENT OF STUDENTS MEETING Kindergarten-Readiness Score



View spring 2018 pre-K assessment results: www.mdek12.org/OPR/Reporting/Assessment/2017-18

STRENGTHENING MISSISSIPPI'S PRE-K SYSTEM



Increasing access to high-quality early childhood education is one of Mississippi's key strategies for improving student outcomes. To help strengthen instruction in all pre-K settings, public and private, the Mississippi Department of Education collaborated with early childhood education teachers, leaders and experts from a variety of settings to create the **Mississippi Early Learning Standards for Classrooms Serving Infants through Four-Year-Old Children**. The publication of the guide marks the completion of Mississippi's work to create a seamless set of standards that are aligned from birth through grade 12. In addition, Mississippi Department of Education early childhood education resources and professional development opportunities are available for free to all early childhood education providers in any setting, public or private.

Early Childhood Coaches

Thanks to a \$6 million grant from the W.K. Kellogg Foundation, the Mississippi Department of Education has hired a team of early childhood coaches to help build a high-quality early childhood education infrastructure throughout Mississippi. The early childhood coaches support teachers statewide in a variety of pre-K settings to implement developmentally appropriate practices in their classrooms.

Major grant activities include professional development and coaching support, pre-K program evaluation to ensure program quality and student progress, the implementation of developmental assessments for students, and assistance with increasing parents' participation in their children's education.

The Kellogg grant has enabled the MDE to expand its Office of Early Childhood from one person in 2015 to a team of 24 early childhood experts.



MDE OFFICE OF EARLY CHILDHOOD TEAM MEMBERS (from left to right): Front Row: Jayme Jones, Elizabeth Stone, Leigh-Ann Gant, Merry Pennell; Second Row (seated in side chairs): Sandra Watkins, Angela Towers, Monica May, Adrienne Mercer; Back Row: Kristi Gary, Deeda Paul, Oki Ragins, Joyce Greer, Jill Dent, Candice Taylor, Amanda Adams, Amye Hoskins, Kelly Carmody, Marisa Prewitt

Pre-K Impact on Kindergarten Readiness

The Mississippi Department of Education started collecting information in 2015 about kindergarteners' prior year experience and pairing it with the statewide Kindergarten Readiness Assessment results. The analysis shows that students who attended public or private pre-K programs were more likely to start school prepared to learn than students who did not. On average, students who had attended pre-K scored above the 530 target score that indicates kindergarten readiness.

PRIOR ENROLLMENT	FALL 2015 Average Score	FALL 2016 Average Score	FALL 2017 Average Score
Pre-K Public	529.5	537.4	541.1
Pre-K Private	545.6	541.7	539.7
Licensed childcare center	521.8	513.2	513.8
Family care	494.3	483.2	479.6
Head Start	478.6	475.0	476.3
Home	482.7	473.9	468.5
Repeater	-	554.6	557.0
No data entered	520.1	494.0	496.7
STATEWIDE AVERAGE	502.8	502.3	503.7



LITERACY

Since the passage of the Literacy-Based Promotion Act in 2013, literacy skills among students in pre-K through the 3rd grade have steadily improved. The legislation takes a comprehensive approach to building the capacity of Mississippi teachers and school leaders to become more effective teachers of reading. Literacy coaches have been assigned to schools where data show students struggle the most with reading, and ongoing professional development has been provided to teachers, school administrators and faculty in teacher preparation programs. The legislation provided \$9.5 million in the first year and \$15 million in subsequent years.

LITERACY ACHIEVEMENTS

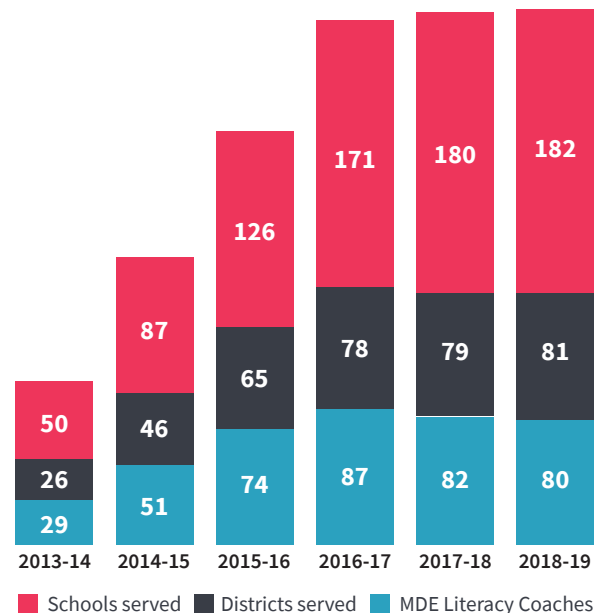
YEAR	Kindergarteners Meeting End-of-Year Target Score
2018	65%
2015	54%

YEAR	3rd Graders Passing Reading Test on First Try
2018	93%
2015	85%

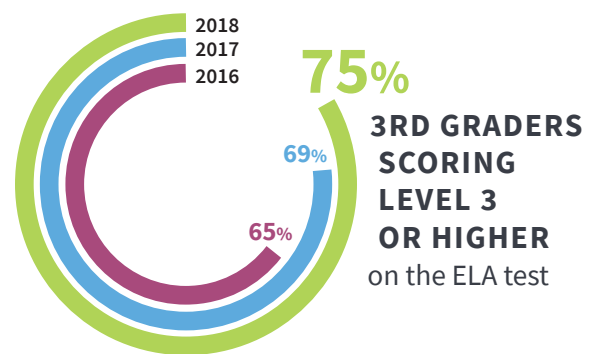
RAISING THE BAR FOR THIRD GRADE LITERACY

Beginning in the 2018-19 school year, the passing score for the reading portion of the Mississippi Academic Assessment Program (MAAP) 3rd Grade English Language Arts (ELA) assessment will be raised, and students must score Level 3 or higher to qualify for 4th grade promotion. Raising the passing score will get students closer to demonstrating proficiency. The percentage of students scoring at Level 3 or higher on the full 3rd grade ELA test has risen steadily since the MAAP test was first administered.

YEAR	3rd Graders Scoring 3 or Higher
2018	75%
2017	69%
2016	65%



LITERACY COACH SUPPORT



View Kindergarten and 3rd Grade Reading Assessment results: www.mdek12.org/OPR/Reporting/Assessment/2017-18

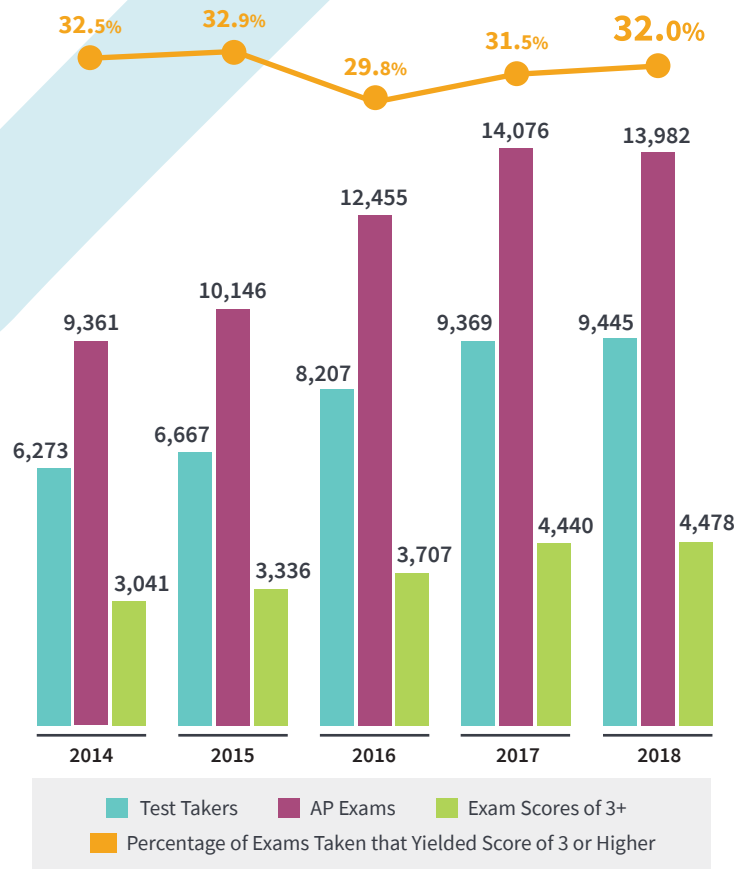
HIGH SCHOOL

ADVANCED PLACEMENT (AP) INITIATIVE

AP The number of Mississippi students taking AP exams and the number of exams with a qualifying score have both nearly doubled since 2013, with exam takers increasing from 5,056 to 9,445 and the number of exams with scores of 3 or higher rising from 2,437 to 4,478.

Starting in the fall of 2019, all eight Mississippi public universities will grant 3 college credits to students with AP scores of 3 or higher and up to 6 credit hours for certain exam subjects with AP scores of 4 or 5. This gives students currently taking AP courses the opportunity to reduce the cost of attending a Mississippi university.

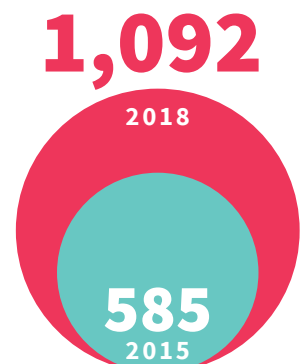
The Mississippi Department of Education implemented an AP Initiative in 2015 to increase statewide participation in AP courses. The effort includes raising awareness about AP benefits, increasing access to AP opportunities and providing AP-focused professional development for teachers, principals and counselors. Participation in AP and other accelerated courses is a factor in accountability grades. The AP Initiative also includes a focus on subgroup performance and equity in AP access.



ADVANCED PLACEMENT RESULTS

AP ACHIEVEMENTS

- In 2017-18, Mississippi saw a 1 percent increase in growth in AP participation and performance overall
- African-American and Hispanic students achieved the greatest gains in AP performance compared to the previous year, with a 10 percent increase in the number of African-American students achieving an AP qualifying score of 3 or higher and a 7.3 percent increase in Hispanic students earning a qualifying AP score
- AP scholar awards nearly doubled since 2015, jumping from 585 to 1,092. AP scholar awards are given to students who earn qualifying scores on multiple AP exams
- 74 percent of students qualified for an AP exam fee reduction, but only 28 percent of students taking AP exams used the subsidy



AP SCHOLAR AWARDS NEARLY DOUBLE

ACT FOR 11TH GRADERS AND 2018 GRADUATES

Since 2015, the Mississippi Legislature has appropriated approximately \$1 million annually for public schools to administer the ACT to all 11th graders. The test measures college-readiness at a crucial time in high school when there is still time to provide interventions to improve achievement. ACT achievement among the graduating class is higher than the junior class, which suggests students improve their scores when they retake the ACT as seniors.

ACT scores for Mississippi’s graduating class of 2018 showed the average composite score remained steady at 18.6 from 2017 to 2018. The national average ACT score for the class of 2018 dropped to 20.8 from 21 in 2017.

Through a partnership with the Mississippi Department of Education and the Southern Regional Education Board (SREB), a group of pilot districts have been offering specialized literacy and math courses to seniors who are on the cusp of meeting the ACT benchmark scores. SREB analyzed students’ ACT scores before and after taking SREB Literacy and Math courses, which showed Mississippi students had a statistically significant increase in ACT scores.

Starting in the 2018-19 school year, all districts will be required to offer the specialized classes, the Essentials for College Literacy and the Essentials for College Math. The Mississippi Institutions of Higher Learning and community colleges allow students who earn a grade of 80 percent or higher in the courses to enter credit-bearing college courses.

The MDE provides districts with training related to analyzing ACT data, evaluating course taking patterns and designing ACT preparation courses.



ACT ACHIEVEMENTS

YEAR	11TH GRADE COMPOSITE SCORE	GRADUATING CLASS COMPOSITE SCORE
2018	17.8	18.6
2017	18.0	18.6
2016	18.3	18.4
2015	17.6	19





MISSISSIPPI DIPLOMA AND ENDORSEMENT OPTIONS

Mississippi students now have the opportunity to make their high school diploma more valuable. Starting in 2018-19, all 9th graders will choose whether they want to work towards a traditional high school diploma, or take additional classes to earn an academic, distinguished academic or career and technical education endorsement.

Each diploma option will prepare students to be successful after graduation, whether that be in the workforce, the military, a career and technical training program or college.

Beginning with the class of 2022, students who earn an academic or distinguished academic diploma endorsement from a public high school will automatically qualify for admission into any of the state's public universities.

Mississippi public schools also offer an alternate course of study for students with Significant Cognitive Disabilities. This course of study leads to the Alternate Diploma, which recognizes that a student has completed high school. The Alternate Diploma is not equivalent to a traditional diploma and is not recognized by postsecondary entities that require a standard high school diploma.



**ACADEMIC OR
DISTINGUISHED
ACADEMIC
DIPLOMA
ENDORSEMENT**

from a public high school will automatically qualify students for admission into any of the state's public universities



More information at
www.mdek12.org/ESE/diploma

EARLY COLLEGE HIGH SCHOOLS

Mississippi launched its first early college high school in 2015 with 60 students. The state now serves 689 students at five early college high schools and one middle college program. Early college high schools are small schools, usually located on a partnering college campus, where high school students (grades 9-12) attend with the intent of graduating with a high school diploma and an associate degree. They may also earn a national certification in a technical field if they want to enter the workforce upon graduation. A middle college program is a robust dual credit/dual enrollment program run by a school district and supported by a strong high school transitional counselor where juniors and seniors split time between the high school and the college campus. The first cohort of early college high school students will graduate in May 2019, and many are on target to complete their associate degree along with their high school diploma.

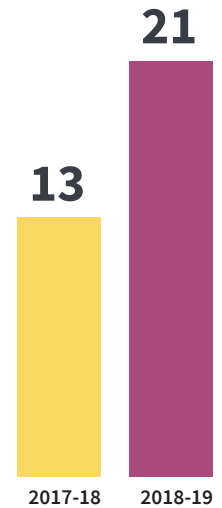
- ▶ **GOLDEN TRIANGLE EARLY COLLEGE HIGH SCHOOL (GTECHS)**
Partnership among Mississippi Department of Education, East Mississippi Community College and Mississippi State University. Students in Clay, Lowndes, Noxubee and Oktibbeha counties are eligible to apply.
- ▶ **COAHOMA EARLY COLLEGE HIGH SCHOOL**
Coahoma Agricultural High School and Coahoma Community College partnership
- ▶ **NATCHEZ EARLY COLLEGE ACADEMY**
Natchez-Adams School District and Copiah-Lincoln Community College partnership
- ▶ **GULFPORT HIGH SCHOOL MIDDLE COLLEGE PROGRAM**
Gulfport School District and Mississippi Gulf Coast Community College partnership
- ▶ **GREENVILLE PUBLIC EARLY COLLEGE HIGH SCHOOL**
Greenville Public School District and Mississippi Valley University partnership launched in 2018-19 with 26 students
- ▶ **JACKSON PUBLIC SCHOOLS EARLY COLLEGE HIGH SCHOOL**
Jackson Public Schools and Tougaloo College partnership launched in 2018-19 with 42 students



EARLY COLLEGE HIGH SCHOOLS expand from one in 2015 to five early college high schools and one middle college program in 2018

EARLY COLLEGE HIGH SCHOOL ACHIEVEMENTS

MEASURE	GOLDEN TRIANGLE EARLY COLLEGE HS	NATCHEZ EARLY COLLEGE HS	COAHOMA AGRICULTURAL EARLY COLLEGE HS
Number of Students	175	157	289
Junior ACT Average	19.3	17.2	14.7
Algebra I Pass Rate	83%	83%	48.0%
English II Pass Rate	92.8%	84.1%	42.6%
Science Proficiency	91.2%	63.9%	32.6%
U.S. History Proficiency	64.3%	55.2%	12.9%
College and Career Readiness	37.7%	22.2%	6.4%
Advanced Course Participation	95%	89.2%	70.9%
Chronic Absenteeism	8%	5.6%	33.1%



STUDENTS EARNED ASSOCIATE DEGREES along with high school diploma



GULFPORT HIGH SCHOOL MIDDLE COLLEGE PROGRAM ACHIEVEMENTS

- 13 students received associate degrees in 2017-18 along with their high school diplomas. Two students from the class of 2018 were selected for the Phi Theta Kappa honor society.
- 21 current high school seniors are expected to earn associate degrees in 2018-19 with their high school diplomas. Two students from the class of 2019 were selected for the Phi Theta Kappa honor society.

PROFESSIONAL DEVELOPMENT FOR MISSISSIPPI EDUCATORS



In 2017-18, the Mississippi Department of Education delivered 1,422 professional development sessions to 46,372 educators statewide. District personnel can select training opportunities from the MDE's professional development calendar or request specialized, on-demand services. In addition, the MDE provides teacher-developed exemplar units for grades K-12 that are aligned to the Mississippi College- and Career-Readiness Standards for English Language Arts and Mathematics. As a result of the state's significant investment in professional development for educators, Mississippi students have shown tremendous academic gains.

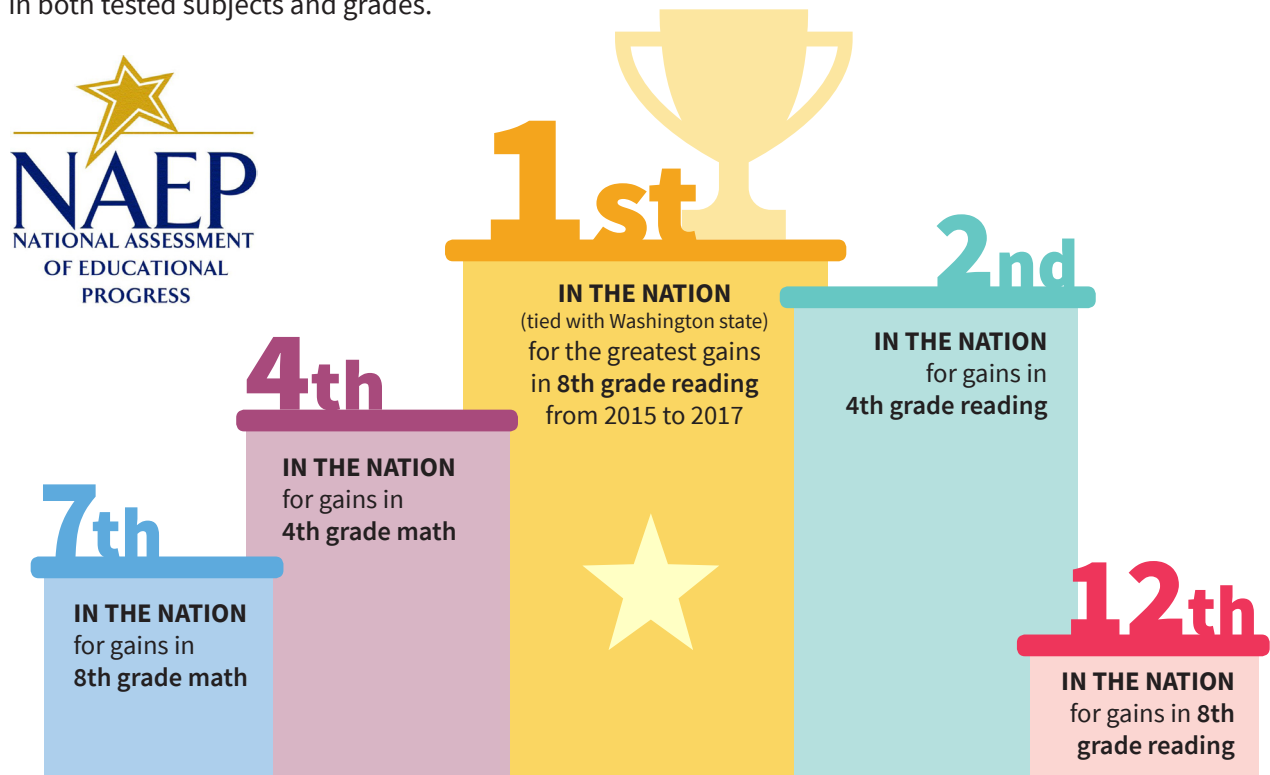
STUDENT ACHIEVEMENT

NATIONAL ASSESSMENT OF EDUCATIONAL PROGRESS (NAEP)

Mississippi students have made consistent gains in reading over the past dozen years on the National Assessment of Educational Progress (NAEP), also known as The Nation's Report Card, making Mississippi one of the top leaders in score improvement in 4th grade reading between 2005 and 2017, according to the National Assessment Governing Board.

The report on Mississippi, **NAEP Gains Follow State's Efforts to Improve Student Achievement**, took a closer look at what has changed in the state over the years to move academic performance in Mississippi, where scores are increasing faster than the national average.

Over a 10-year span Mississippi has achieved extraordinary outcomes on the NAEP assessment, surpassing the national average in score gains in both tested subjects and grades.



MISSISSIPPI NAEP HIGHLIGHTS 2007-2017



MISSISSIPPI ACADEMIC ASSESSMENT PROGRAM

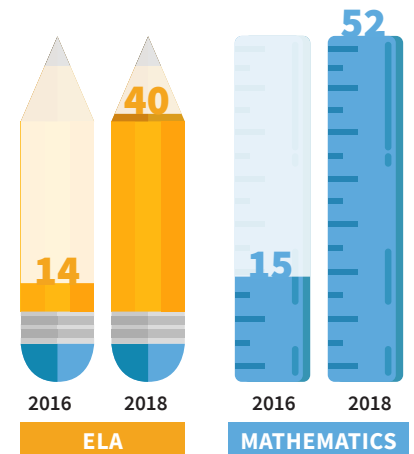
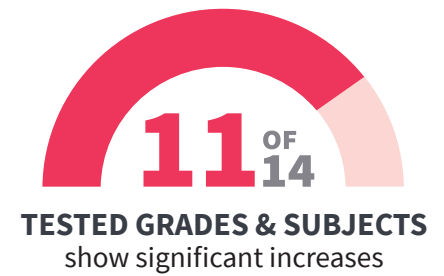
For the fourth consecutive year, students made gains in nearly all grades on the statewide tests that are aligned to the Mississippi College- and Career- Readiness Standards for both English Language Arts and Mathematics.

Mississippi Academic Assessment Program (MAAP) results for 2017-18 show significant increases in 11 out of 14 tested grades and subjects.

The results of the MAAP assessments are closer to the results on the National Assessment of Educational Progress (NAEP). MAAP raises the level of expectations for all students and provides parents a better picture of where their children are on their path to college or career.

District-wide results improved significantly between 2016 and 2018:

- ▶ English Language Arts (ELA) and Mathematics proficiency rates increased annually between 2016 and 2018, rising from 33 to 40 percent in ELA and from 31 to 44 percent in Mathematics
- ▶ Number of districts with 45 percent of students scoring proficient or advanced in ELA and Mathematics roughly tripled from 2016 to 2018



DISTRICTS WITH 45% OF STUDENTS SCORING PROFICIENT OR ADVANCED

STATEWIDE MAAP ACHIEVEMENTS

ENGLISH LANGUAGE ARTS

GRADE	2016-17 PROFICIENT OR ADVANCED	2017-18 PROFICIENT OR ADVANCED	CHANGE
Grade 3	36.0%	44.7%	+8.7% ▲
Grade 4	31.3%	45.1%	+13.8% ▲
Grade 5	37.3%	36.2%	-1.1%
Grade 6	40.0%	38.0%	-2.0%
Grade 7	30.1%	34.7%	+4.6% ▲
Grade 8	34.2%	35.1%	+0.9% ▲
English II	47.8%	44.5%	-3.3%
Overall	36.7%	39.8%	+3.1% ▲

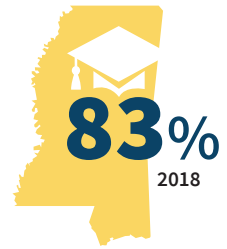
MATHEMATICS

GRADE	2016-17 PROFICIENT OR ADVANCED	2017-18 PROFICIENT OR ADVANCED	CHANGE
Grade 3	40.1%	46.0%	+5.9% ▲
Grade 4	35.8%	44.4%	+8.6% ▲
Grade 5	33.7%	33.8%	+0.1% ▲
Grade 6	37.7%	46.4%	+8.7% ▲
Grade 7	43.8%	49.2%	+5.4% ▲
Grade 8	36.6%	41.2%	+4.6% ▲
Algebra I	42.4%	46.6%	+4.2% ▲
Overall	38.6%	43.9%	+5.3% ▲

NOTE: Algebra I and English II proficiency data have been updated to reflect first-time test takers only. Previous reports included retest results. Retest data have been removed to make Algebra I and English II results consistent with grades 3-8.

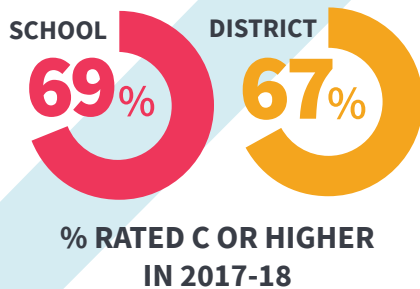
GRADUATION RATE

Mississippi's graduation rate reached an all-time high of 83 percent in 2018. At this rate of growth, Mississippi could surpass the national rate of 84 percent by next year.

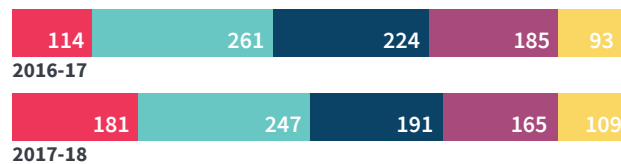


SCHOOL AND DISTRICT GRADES

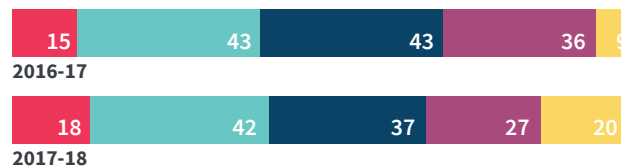
Mississippi schools and districts earn annual grades on an A through F scale. The grading system considers several indicators, including how well students perform on state tests, whether students are showing improvement on those tests from year to year and whether students are graduating within four years. The system also factors in how well schools are helping their lowest achieving students make progress toward proficiency. At the high school level, accountability measures include students' ACT scores and participation and achievement in advanced coursework.



SCHOOL GRADES



DISTRICT GRADES



HIGHLIGHTS

- More than two-thirds of districts are rated C or higher
- Twenty-nine districts increased their letter grades from the previous school year
- Total A-rated schools rose from 114 in 2016-17 to 181 in 2017-18
- Total F-rated districts increased from nine to 21 because of a change to the grading scale that went into effect for 2017-18

	GRADE	2016-17	2017-18
SCHOOL	A	114	181
	B	261	247
	C	224	191
	D	185	165
	F	93	109
	Total	880	893

	GRADE	2016-17	2017-18
DISTRICT	A	15	18
	B	43	42
	C	43	37
	D	36	27
	F	9	20
	Total	146	144

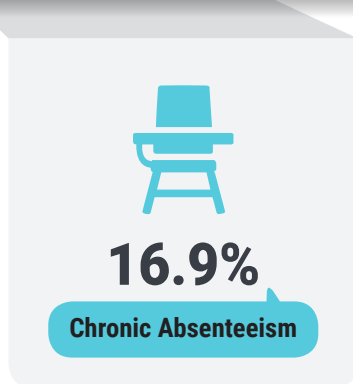
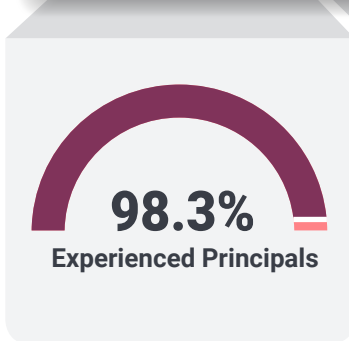
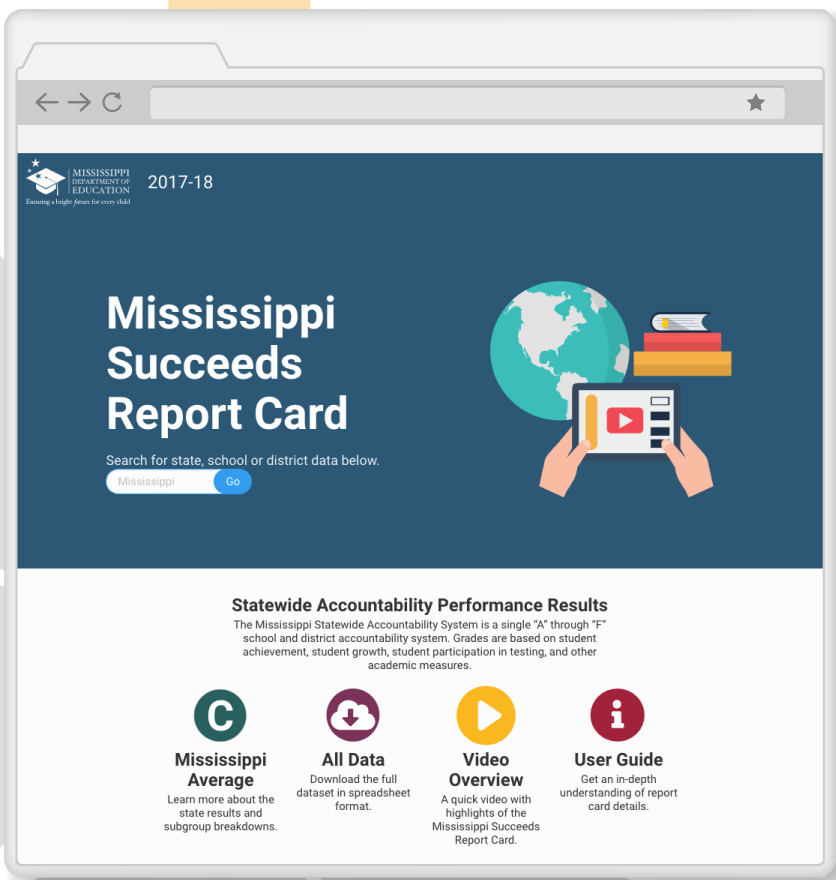
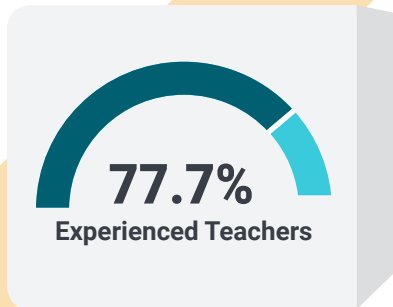
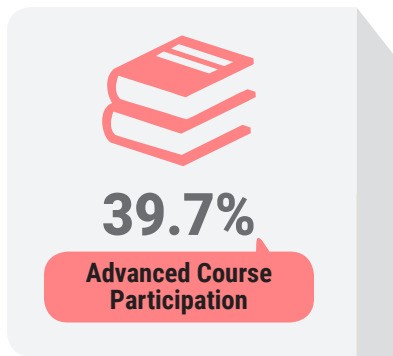
NOTE: Grades for charter schools and special schools are included in charts for school grades only.

MISSISSIPPI SUCCEEDS REPORT CARD

The Mississippi Department of Education launched the new **Mississippi Succeeds Report Card** (<https://msrc.mdek12.org/>), an interactive online tool designed to help parents and communities more easily evaluate schools across the state. The tool includes detailed information about each school and district's academic performance and new indicators of school performance including chronic absenteeism rates and teacher qualifications.

Among its many features, the Mississippi Succeeds Report Card includes:

- ▶ Academic performance by student groups
- ▶ Advanced course participation
- ▶ Educator workforce data
- ▶ Chronic absenteeism rates



NOTABLE STATE AND NATIONAL HONORS

THREE MISSISSIPPI SCHOOLS EARN NATIONAL BLUE RIBBON HONORS

Three Mississippi schools were among the 349 schools nationwide to earn National Blue Ribbon status for 2018. The recognition is based on a school's overall academic performance or progress in closing achievement gaps among student subgroups.



The three schools earning the national distinction for exemplary high performance are:

- ▶ **Center Hill Middle School** DESOTO COUNTY SCHOOL DISTRICT
- ▶ **Eastside Elementary School** CLINTON PUBLIC SCHOOL DISTRICT
- ▶ **North Bay Elementary School** BILOXI PUBLIC SCHOOL DISTRICT

The coveted National Blue Ribbon Schools award affirms the hard work of educators, families and communities in creating safe and welcoming schools where students master challenging and engaging content. The 2018 honorees were recognized at an awards ceremony in Washington, D.C.



PASS CHRISTIAN PRINCIPAL WINS 2018 MILKEN EDUCATOR AWARD FOR MISSISSIPPI



Photo credit: Milken Family Foundation



Photo credit: Milken Family Foundation

Robyn Killebrew, Ph.D.

principal of Pass Christian High School, received the \$25,000 Milken Educator Award for Mississippi in 2018. This prestigious honor recognizes up to 35 of America's most outstanding educators.

When Killebrew took over as principal of Pass Christian High School in 2014, she noticed that incoming freshmen tended to stumble as they moved to high school. Her solution:

PASS CHRISTIAN'S FRESHMAN ACADEMY, a program specifically designed to help smooth the transition from middle school to ninth grade. Killebrew meets with the incoming freshmen herself, encouraging them to become part of the Pass Christian family by joining an athletic team, club or academic organization during their high school years. Since the program launched, Pass Christian's graduation rate has risen to over 90 percent. Killebrew also created an ACT "boot camp" to prepare students for the standardized college test; she knows many Pass Christian families depend on college scholarships and reminds students that ACT points equal "college dollars." Scores on every area of the test, and the percentage of students meeting benchmarks in all four testing areas **HAS RISEN FROM 17 PERCENT TO 27 PERCENT.**

A former basketball, softball and volleyball coach, Killebrew takes a team approach to managing both students and staff. She is known as an excellent instructional leader who motivates teachers to adopt a growth mindset and make sure students achieve their academic goals.

Killebrew loves data. During a staff development day, Killebrew showed Pass Christian teachers how to read and interpret the state's accountability model, then encouraged them to turn around and share that with students to help them understand their progress and how factors like attendance affect their learning. Pass Christian has won many awards and consistently ranks among the top school districts in the state.



More information at
www.MilkenEducatorAwards.org

2018 MISSISSIPPI TEACHER OF THE YEAR



My belief is that **ALL STUDENTS CAN LEARN** if nurtured and placed in the right environment. If they feel safe and comfortable, if they make mistakes and learn from the mistakes, they will learn.



Whitney Drewrey

3rd – 5th grade teacher of mild/moderate and severe/profound students at Lafayette Upper Elementary School, Lafayette School District, has been selected as the 2018 Mississippi Teacher of the Year.

Drewrey, in her 15th year of teaching, said her greatest accomplishment was when she left the “comfort zone of teaching science and reinvented herself as a teacher to reach a population she could better serve” – students with disabilities.

2018 MISSISSIPPI ADMINISTRATOR OF THE YEAR

Dr. Howard Savage, Jr.

principal of Quitman High School in the Quitman School District, has been selected as the 2018 Mississippi Administrator of the Year.

Savage began his career as a classroom teacher before moving into assistant principal and principal roles in Mississippi schools. His personal philosophy of education and teaching is “self-reflection is the key to interpersonal growth.” He believes that by making personal adjustments, students, teachers and administrators can excel. Through personal adjustments among staff and students in the district, Savage created a recipe for success.



These strategies were the framework in achieving my **MOST REWARDING PROFESSIONAL EXPERIENCE** as an administrator, leading Quitman High School from a three-year consecutive D rating on the Mississippi Accountability Model to a B rating.



2018 MISSISSIPPI PARENT OF THE YEAR



I am honored to be Mississippi's Parent of the Year and to represent Ocean Springs.

TO HELP OTHERS,

even people I may never even meet, is such a blessing in my life.



Heather Church

a mother of two children in the Ocean Springs School District, was named the 2018 Mississippi Parent of the Year.

Nominated by the school district, Church has been actively involved in her children's schools since 2008. She created a Bid 4 Kids auction, a fun run to promote health and fitness and family movie nights for school families for multiple years at Pecan Park Elementary School. At Ocean Springs Middle School, she created the student activity, Social on the Green, which raised funds for the parent-teacher organization to provide all certified teachers with a \$75 Amazon gift card for their classrooms.

Church also is instrumental in annual fund-raising activities for the Ocean Springs Education Foundation, resulting in over \$60,000 in grants to teachers in 2018. Based on her experiences as a parent-teacher organization president, Church wrote a book that sold on Amazon and was the top release in the parent participation in education category in 2017.

Church is known for her great service in the school district and in the community. As one community member stated, "It's impossible to list all the many ways she volunteers in our church community, our schools and the greater Ocean Springs community. Her handprints are all over this town."

Research has repeatedly shown that parental involvement is a critical factor determining the academic success of students. As part of the annual Parent of the Year program, the Mississippi Department of Education asks each district to select an outstanding parent who has made a significant impact on school improvement efforts in the school district.

MISSISSIPPI SCIENCE TEACHERS EARN NATIONAL RECOGNITION

Two Mississippi teachers are 2018 state finalists for the Presidential Awards for Excellence in Mathematics and Science Teaching (PAEMST) Program. The PAEMST Program is the nation's highest honor for teachers of mathematics and science (including computer science).

The two state finalists are **Shelby Miller**, 5th and 6th grade science teacher at Singing River Academy in the Pascagoula Gautier School District, and **Theresa (Terry) Rose**, 3rd and 5th grade science teacher at Stone Elementary in the Stone County School District. Awardees serve as models for their colleagues, inspiration to their communities, and leaders in the improvement of mathematics and science education. The PAEMST program, established in 1983 by the White House, allows each state to select up to five state finalists in mathematics and up to five state finalists in science. One of the state finalists in each content area will be selected as the Presidential Awardee for the state, which is the highest recognition that a kindergarten through 12th grade mathematics or science teacher may receive for outstanding teaching in the United States.

Miller, who also has taught English language arts as part of her nine-year career, said the purpose of teaching is “to create a community of lifelong learners by investing in human capital.” She is an example of that philosophy as she seeks to earn an education leadership degree within the next year.

A 29-year veteran teacher, Rose said she is “both honored to be selected and awed by the company of fellows” who share in the accomplishment of being named a state finalist for PAEMST.



Terry Rose (center) receives recognition from Jason Dean, Ph.D., Mississippi State Board of Education chair, and Carey Wright, Ed.D., State Superintendent of Education



Shelby Miller

NATIONAL BOARD CERTIFIED TEACHERS

National Board Certification is the highest mark of accomplishment in the teaching profession and demonstrates that teachers have attained the knowledge and skills necessary to prepare students for 21st century success. The state of Mississippi provides significant support for teachers seeking Board certification and provides Mississippi's Board-certified teachers with an annual stipend of \$6,000.

- ▶ **129 MISSISSIPPI TEACHERS ACHIEVED** National Board Certification in 2017, bringing the total number of National Board Certified Teachers to 4,040
- ▶ **882 MISSISSIPPI TEACHERS** are in the process of **SEEKING** Board certification in 2018
- ▶ **140 MISSISSIPPI NBCTS RENEWED** their Board Certification in 2018, the highest number among all surrounding states



4,040
IN THE STATE

STATE SUPERINTENDENT ELEVATES EARLY CHILDHOOD EDUCATION AS PRESIDENT OF THE COUNCIL OF CHIEF STATE SCHOOL OFFICERS



Carey Wright, Ed.D., Mississippi's state superintendent of education since 2013, helped to increase access to high-quality early childhood education through her platform as president of the Board of the Directors of the Council of Chief State School Officers (CCSSO) in 2017-18.

CCSSO is a nonpartisan, nationwide, nonprofit organization of state education chiefs that provides leadership, advocacy and technical assistance on major educational issues.

Wright's position as CCSSO board president gave her a national platform to talk about the importance and value of high-quality early childhood education with policy leaders, education leaders, philanthropists, researchers and colleagues in other states. Increasing access to early childhood education is one of CCSSO's 10 Leading for Equity Commitments, which are a series of commitments to help state education chiefs take action to achieve educational equity in their states.

During her tenure as CCSSO board president, Wright was invited for the second time to testify before the U.S. House of Representatives Committee on Education and the Workforce. The hearing focused on Protecting Privacy, Promoting Policy: Evidence-Based Policymaking and the Future of Education.

Wright now serves as past-president of CCSSO and continues to be a member of the bipartisan groups Chiefs for Change (CFC) and the Advisory Committee on Ending Chronic Absence (ACECA). CFC is a network of state and district education chiefs dedicated to preparing all students for the future. ACECA is an effort that builds on the research that reducing chronic absence has a direct impact on academic achievement, starting in the early grades.

Wright was selected in 2018 as one of 20 K-12 education leaders from across the nation to join The Broad Academy, the nation's most prominent professional-development program for current and aspiring school-system leaders.

The two-year Broad Academy program supports passionate, proven leaders who are deeply focused on excellence and equity for every student and family they serve. The 2018 cohort is comprised of current and aspiring urban and state superintendents who joined the program to grow their organizations' effectiveness and increase their impact.



education leaders from
across the nation
**SELECTED TO JOIN THE
BROAD ACADEMY**



INITIATIVES

DISTRICTS OF INNOVATION

HINDS COUNTY SCHOOL DISTRICT became Mississippi's newest District of Innovation, bringing the total number of Districts of Innovation to seven.

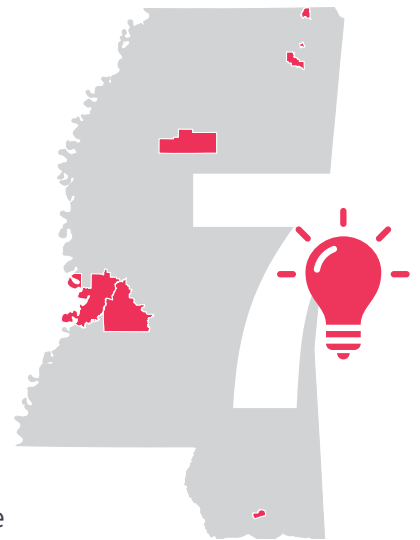
The Hinds County School District innovation model will create Career Academies that will allow students to earn up to 18 college credits and/or nationally recognized industry credentials while in high school. Students will choose career pathway courses in Science, Technology, Engineering and Mathematics (STEM), Arts and Business, or Health and Human Services.

High school students will receive ongoing career counseling and will have the opportunity to participate in worksite visits, job shadowing, internships and work-based learning experiences in their chosen career field. Elementary and middle school students will explore career pathways through the Project Lead the Way curriculum. Middle school courses also will include introductory offerings in computer science, engineering and biomedical science.

Hinds County's District of Innovation partners include Hinds County Community College and Entergy.

Mississippi's other Districts of Innovation include **Corinth, Gulfport, Vicksburg-Warren, Grenada, Baldwin and Booneville.**

Legislation passed in 2015 allows districts to apply for District of Innovation status, which enables the district to request exemptions from state regulations to improve student achievement. Through the innovative model, districts have flexibility in areas such as seat time and teacher certification to allow for innovative scheduling and instruction.



MISSISSIPPI INNOVATION LAB NETWORK LAUNCHES

The Mississippi Department of Education launched the **Mississippi Innovation Lab Network (MS-ILN)**, which encourages a network of school districts to work together to identify, test, and implement student-centered approaches to learning that will be shared statewide to help transform education in Mississippi. The student-centered approaches to learning include personalized, competency-based, and anytime/anywhere learning.

Districts will collaborate in learning communities to implement policies and improve practices to support underserved students. Membership in the network requires a commitment from district superintendents, administrators, teachers, and local school boards to join and receive support for their work.

The school districts selected to participate in the network include the Districts of Innovation that will serve as exemplars for other districts. The MS-ILN process also will be used to identify future Districts of Innovation participants. The school districts that have joined the MS-ILN include:

- ▶ Rankin County
- ▶ Pascagoula-Gautier
- ▶ Pontotoc County
- ▶ Hinds County
- ▶ George County
- ▶ Jefferson Davis County
- ▶ Starkville-Oktibbeha County
- ▶ New Albany
- ▶ Oxford
- ▶ Kosciusko
- ▶ South Tippah
- ▶ Neshoba County



TEACHER-RESIDENCY AND PERFORMANCE-BASED PILOT PROGRAMS

The Mississippi Department of Education is launching an initiative to increase the number of qualified teachers entering and remaining in the profession through teacher-residency and performance-based licensure programs. The project is funded by a \$4.1 million grant from the W.K. Kellogg Foundation to address the achievement gaps in high-poverty, high-minority schools and schools that lack a diverse teaching staff.

The grant will fund the **Mississippi Teacher Residency program**, which is a collaboration among the MDE, Jackson Public Schools, Sunflower County School District, Biloxi Public Schools and Ocean Springs School District. The program will recruit 35 diverse teacher candidates each year, pay their undergraduate tuition, and place them in the classroom of a highly skilled or National Board Certified Teacher mentor for two years. Candidates will be required to teach in the school district where they conducted their residency for three years after completing the program.

The W.K. Kellogg grant will also fund a **performance-based teacher licensure pilot program**, which will help a select group of teachers with provisional licenses become fully licensed. The program is aimed at teachers who have proven to be effective in the classroom, but have not yet passed all licensure exams.

Recruitment for the Mississippi Teacher Residency and performance-based licensure programs will start in spring 2019.

OTHER HIGHLIGHTS

STATE SUPERINTENDENT LEADS 3RD ANNUAL 'CELEBRATION OF EXCELLENCE' TOUR OF A-RATED SCHOOL DISTRICTS

State Superintendent Carey Wright, Ed.D., led a series of visits in 2018 to each of Mississippi's **18 A-RATED SCHOOL DISTRICTS** for the 3rd annual "Celebration of Excellence" Tour. District leaders, school board members and legislators joined Wright at each location to thank teachers and students for their hard work and to recognize them for their achievements.



2017-18 A-RATED DISTRICTS:

- Biloxi Public Schools
- Booneville School District
- Clinton Public Schools
- DeSoto County Schools
- Enterprise School District
- Lafayette County School District
- Lamar County School District
- Long Beach School District
- Madison County Schools
- North Tippah School District
- Ocean Springs School District
- Oxford School District
- Pass Christian Public School District
- Petal School District
- Pontotoc City Schools
- Rankin County School District
- Tishomingo County School District
- Union County School District

MISSISSIPPI TEACHER ADVISORY COUNCIL EXPANDS

The Mississippi Teacher Advisory Council expanded for the 2017-18 school year, with close to **200 MEMBERS** representing K-12 classrooms across the state.

The Teacher Advisory Council launched in 2015-16 to provide feedback to the state superintendent of education on the initiatives of the Mississippi Department of Education and the Mississippi State Board of Education. Council members discuss topics critical to their success in the classroom and identify new opportunities for the MDE to support teachers in their work.

Teacher Advisory Council members meet with Carey Wright, Ed.D., the state superintendent of education, in regional meetings set in north, central and south Mississippi throughout the school year.



View list of Mississippi Teacher Advisory Council members:
www.mdek12.org/SSE/Council

COMPUTER SCIENCE FOR MISSISSIPPI – CS4MS

The Computer Science for Mississippi (CS4MS) program continued in 2017-18 with 21 school districts approved to participate in the third year of the computer science pilot program:

- ▶ Biloxi Public School District
- ▶ Booneville School District
- ▶ Calhoun County School District
- ▶ DeSoto County School District
- ▶ Enterprise School District
- ▶ Forrest County School District
- ▶ Grenada School District
- ▶ Holly Springs School District
- ▶ Jefferson Davis School District
- ▶ Jones County School District
- ▶ Long Beach School District
- ▶ McComb School District
- ▶ North Bolivar School District
- ▶ North Panola School District
- ▶ North Tippah School District
- ▶ Petal School District
- ▶ Quitman City School District
- ▶ Quitman County School District
- ▶ Stone County School District
- ▶ Tupelo School District
- ▶ Webster County School District

Over the course of the three-year pilot, 75 districts have participated in offering computer science courses and materials to their students. The MDE provided training for more than 400 teachers during the summer, bringing the total trained during the pilot period to over 800 teachers. In addition, the MDE developed computer science learning standards that became available to all school districts for the 2018-19 school year.

Additional computer science courses for middle school and expanded high school offerings will be added in future years of the CS4MS pilot program. Ultimately, the goal of CS4MS is to have a continuous K-12 computer science pipeline in place for all Mississippi public schools by the year 2024.



{ **CS4MS** }

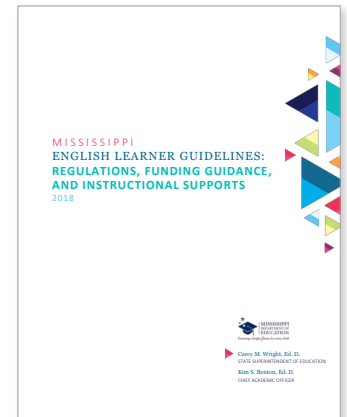
75 DISTRICTS
OVER **800**
TEACHERS

MDE HELPS EDUCATORS MEET THE NEEDS OF ENGLISH LEARNERS

In response to the growing population of English learners in Mississippi, the Mississippi Department of Education published a comprehensive guide, **Mississippi English Learner Guidelines: Regulations, Funding Guidance and Instructional Supports**, to help educators meet the needs of Mississippi's English learner students. The guide provides teaching resources and practical approaches to managing the day-to-day instruction of English learners.

Following the national trend, the number of EL students in Mississippi is growing each year. In early 2018, the majority of Mississippi school districts had at least one English learner. Thirty-five districts had between 10 and 50 English learners, 26 districts had between 50 and 150, and 14 districts served more than 300 English learners.

Spanish is the most prevalent language spoken by English learners in Mississippi, but more than 20 other languages are also represented. After Spanish, the most common languages spoken by EL students in Mississippi are Arabic, Vietnamese, Chinese and Gujarati.



ACADEMIC STANDARDS

The Mississippi Department of Education worked with a diverse team of educators and experts to develop or update a range of academic standards that support teaching and learning in Mississippi classrooms. Academic standards describe the learning goals for each grade and subject. Standards are evaluated and updated periodically to ensure that students are challenged and that the standards are preparing students to graduate ready for college, careers and life.

► **Mississippi Early Learning Standards for Classrooms Serving Infants through Four-Year-Old Children**

The publication of these standards marks the completion of Mississippi's work to create a seamless set of standards that are aligned from birth through the 12th grade.

► **Mississippi College- and Career-Readiness Standards for Social Studies**

Social Studies standards are comprised of five essential content strands: Civics, Civil Rights, Economics, Geography, and History. The content strands give depth to the social studies curriculum, enabling students to grasp the complexity of events from the past and present and help them acquire critical thinking skills to make informed decisions in the future.

► **Mississippi College- and Career-Readiness Standards for Science**

Science standards were developed with a team of 47 Mississippi science educators in K-12 and the Research and Curriculum Unit at Mississippi State University.

► **Mississippi College- and Career-Readiness Standards for Computer Science**

Computer Science standards for Mississippi reflect national expectations while focusing on postsecondary successes.

DISTRICT FINANCIAL INFORMATION

2017-18 STATEWIDE RECEIPTS FOR PUBLIC SCHOOLS

Source of Federal Funds

Wildlife Refuge	\$	32,062	
E-Rate		12,219,273	
Impact Aid - Maint. & Operation		2,035,989	
Flood Control		127,746	
Mineral Leases		2,374	
Other Unrestricted		9,933,260	
Title III - Lang Instr. For LEP & Immigrant		1,370,957	
Title I		188,646,480	
School Improvement 1003g		1,956,664	
Migrant		-	
Title VI		3,331,293	
Title V		915,178	
EHA-Special Education		110,524,240	
Adult Education		1,087,126	
Vocational & Technical Education		5,923,094	
Impact Aid - Construction		-	
Child Nutrition		257,043,005	
Title II		24,772,462	
Title IV		1,286,187	
School to Careers		19,116	
Title X-C Ed. for Homeless Children & Youth		594,972	
21st Century		3,597,872	
Restricted - Disaster Relief		-	
Restricted - ARRA		90,833	
TVA		5,737,674	
National Forest		2,042,533	
Other - Restricted		25,365,612	
TOTAL FEDERAL SOURCES	\$	658,656,003	13.97%

Source of State Funds

Homestead Exemption	\$	32,330,575	
Severance Tax		207,250	
Chickasaw Funds		19,573,344	
Drivers Education		719,115	
MAEP & Per Capita		2,210,893,190	
School Ad Valorem Tax Reduction		-	
Education Enhancement Fund		20,258,670	
Vocational & Technical Education		39,153,900	
Education Reform Acct		-	
Adult Education		15,411	
Child Nutrition		2,604,983	
Educable Children		4,631,595	
Other		77,845,985.00	
TOTAL STATE FUNDS	\$	2,408,234,018	51.04%

Source of Local Funds

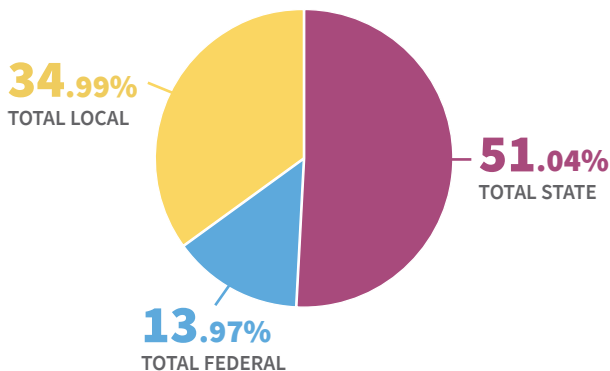
Ad Valorem Taxes		1,442,718,784	
Other Taxes		2,750,392	
Revenue in Lieu of Taxes		22,138,269	
Tuition		10,995,047	
Transportation Fees		2,251,838	
Earnings on Investments		13,921,873	
Food Service		40,579,228	
Student Activity		62,635,572	
Community Service		2,373,036	
Other Revenue from Local Sources		36,713,197	
Gaming Revenue		13,924,856	
TOTAL LOCAL REVENUE	\$	1,651,002,093	34.99%

TOTAL REVENUE RECEIPTS FROM LOCAL, STATE & FED SOURCES	\$	4,717,892,114	100.00%
---	-----------	----------------------	----------------

FEDERAL, STATE AND LOCAL SOURCES

REVENUE FOR PUBLIC SCHOOLS

Revenue from Federal, State & Local Sources for Public Schools
(All Funds - Rev. Functions 1000, 3000 & 4000)



Additional Revenue

Intermediate Sources	\$	360,640
Operational Sixteenth Section		37,532,266
Sixteenth Section Principal		14,826,718
TOTAL ADDITIONAL REVENUE	\$	52,719,624

Nonrevenue Receipts

Sale of Bonds	\$	117,576,133
Proceeds of Loans		71,765,447
Inception of Capital Leases		11,115,251
Insurance Loss Recoveries		7,562,286
Sale of Assets		6,407,008
TOTAL NONREVENUE RECEIPTS	\$	214,426,125

TOTAL REVENUE & NONREV. RECEIPTS	\$	4,985,037,863
---	-----------	----------------------



View all reports at
www.mdek12.org/superintendent2018

2017-18 STATEWIDE EXPENDITURES FOR PUBLIC SCHOOLS

INSTRUCTION & OTHER STUDENT EXPENDITURES

1105 - 1109	PREKINDERGARTEN	\$	25,949,593.69
1110 - 1199	INSTRUCTION		1,863,547,625.73
1210 - 1299	SPECIAL PROGRAMS		449,447,022.93
1310 - 1399	ADULT/CONTINUING EDUCATION		2,357,960.33
1410 - 1499	SUMMER SCHOOL PROGRAMS		1,273,303.56
1910 - 1919	ATHLETICS		78,477,263.06
1920 - 1929	STUDENT ACTIVITIES		35,796,417.68
1930 - 1999	OTHER INSTRUCTIONAL PROGRAMS		6,568,872.54
2110 - 2119	ATTENDANCE		13,286,969.32
2120 - 2129	GUIDANCE SERVICES		100,354,213.57
2130 - 2139	HEALTH SERVICES		35,088,092.26
2140 - 2149	PSYCHOLOGICAL SERVICES		18,958,950.49
2150 - 2159	SPEECH PATHOLOGY		46,421,210.34
2160 - 2169	SCHOOL RESOURCE OFFICER		5,400,581.42
2190 - 2199	OTHER SUPPORT SERVICES - STUDENTS		7,448,785.20
2210 & 2290	IMPROVEMENT OF INSTRUCTION		116,469,687.76
2220 - 2229	EDUCATIONAL MEDIA SERVICES		87,172,395.25

Note 1:
Expenditure categories are per SDE definition. State level administrative costs are not included in totals.

TOTAL INSTRUCTION & OTHER STUDENT EXPENDITURES **\$ 2,894,018,945.13** 66.60%

GENERAL ADMINISTRATION

2310 - 2319	BOARD OF EDUCATION SERVICES	\$	27,074,708.48
2320 - 2329	EXECUTIVE ADMINISTRATIVE SERVICES		49,424,260.35
2330 - 2339	SPECIAL AREA ADMINISTRATION		73,386,165.45
2500 - 2599	BUSINESS SERVICES		61,670,019.21

TOTAL GENERAL ADMINISTRATION **\$ 211,555,153.49** 4.87%

SCHOOL ADMINISTRATION

2410 - 2499	SCHOOL ADMINISTRATION	\$	259,476,412.74
-------------	-----------------------	----	----------------

TOTAL SCHOOL ADMINISTRATION **\$ 259,476,412.74** 5.97%

OTHER EXPENDITURES - INSTRUCTIONAL SUPPORT

2610 - 2699	OPERATION AND MAINTENANCE OF PLANT	\$	445,039,205.20	<i>(Excludes Capitalized Equipment)</i>
2710 - 2799	STUDENT TRANSPORTATION SERVICES		210,228,799.18	<i>(Excludes Capitalized Equipment)</i>
2800 - 2899	CENTRAL SUPPORT SERVICES (TECH)		52,738,313.4	<i>(Excludes Capitalized Equipment)</i>

TOTAL OTHER EXPENDITURES - INSTRUCTIONAL SUPPORT **\$ 708,006,317.77** 16.29%

OTHER EXPENDITURES - NONINSTRUCTIONAL SUPPORT

3100	FOOD SERVICE OPERATIONS	\$	255,777,446.49	<i>(Excludes Capitalized Equipment)</i>
3200	ENTERPRISE OPERATIONS		199,104.57	<i>(Excludes Capitalized Equipment)</i>
3300	COMMUNITY SERVICES OPERATIONS		2,862,132.16	<i>(Excludes Capitalized Equipment)</i>
3900 - 3999	OTHER NON-INSTRUCTIONAL SERVICES		13,362,322.80	<i>(Excludes Capitalized Equipment)</i>

TOTAL OTHER EXPENDITURES- NONINSTRUCTIONAL SUPPORT **\$ 272,201,006.02** 6.27%

TOTAL CURRENT OPERATIONAL EXPENDITURES (Functions 1000-3999) **\$ 4,345,257,835.15** 100.00%

CAPITALIZED EQUIPMENT (Exp. Functions 2600 - 3999) **\$ 66,494,783.18**

NONREVENUE TRANSACTIONS

4100 - 4999	16TH SECTION LAND MGT & IMPROVEMENT	\$	11,695,360.29
5100 - 5999	FACILITY ACQUISITIONS & CONSTRUCTION		156,312,962.70
6100 - 6999	INTEREST PAID ON DEBT (OBJ 830)		56,029,498.40
6100 - 6999	DEBT SERVICE PAYMENTS (EXCLUDING OBJ 830)		237,572,466.93
7500 - 7599	REPAYMENT TO FUNDED BOND ESCROW AGENT		1,116,753.99
7600 - 7699	PYMT TO QZAB DEBT ESCROW AGENT		9,997,414.97
7900 - 7999	OTHER DEBT SERVICE		2,521,576.10

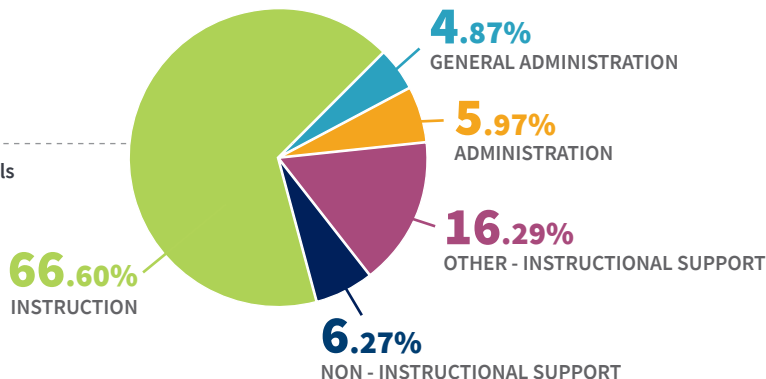
TOTAL NON REVENUE TRANSACTIONS **\$ 475,246,033.38**

TOTAL CURRENT EXPENDITURES & NONREVENUE TRANSACTIONS **\$ 4,886,998,651.71**

FEDERAL, STATE AND LOCAL SOURCES

EXPENDITURES FOR PUBLIC SCHOOLS

Current Operation Expenditures for Public Schools
(All Funds - Exp. Functions 1000-3999)



DISTRICT FINANCIAL INFORMATION

EXPENDITURES FOR PUBLIC SCHOOLS BY FUNCTIONAL AREAS Report details public school expenditure amounts by functional area by school district. For each district, the report shows the percentage of each functional area to the total operational expense. The report also lists the percent ranking for each district for each functional area.

EXPENDITURE PER PUPIL AVERAGE DAILY ATTENDANCE Report shows the average daily attendance for each district. The report also details the expenditure amount per pupil using all funds and expenditure functions 1000-3999. Instructional costs for each district per pupil are listed and include all funds and instructional expenditures. Additionally, the per pupil expenditure amount for transportation is listed by district. The report lists the ranking by district for each of the three per pupil categories. **Statewide, the average per pupil expenditure is \$10,034.**

REVENUE BY SOURCE BY DISTRICT Report shows the amount of revenue each district received from local, state, federal and intermediate sources. By district, the report shows the percentage of each revenue source to the total revenue. The report also lists the percent ranking for each revenue source by districts. The total column shows the revenue received from all sources. The last column lists the ranking by district for the total revenue amount.

ADMINISTRATIVE COST BY DISTRICT Report shows expenditures for each district for total current operations using all funds and expenditure functions 1000-3999. The report also shows a comparison for each district of a calculated amount of administrative cost to actual district administration costs. Additional columns show district administration costs as a percentage of total operational cost and the percent rank of each district. **Statewide, the total percentage of total current operation administrative costs is 3.61 percent.**

DISTRICT ASSESSMENT AND TAX LEVIES Report shows assessed value and homestead information for each district. The report details the breakdown of mills levied for specific purposes as well as the total millage. Districts that have assessed value in two different counties are listed twice to show the assessment and millage by county.

CAREER AND TECHNICAL EDUCATION

Career and Technical Education programs administered by the Office of Career and Technical Education and Workforce Development prepare all students for new jobs, roles, technologies, and responsibilities in order to develop a competent workforce to support and enhance Mississippi's economy. The delivery system is effective and responsive to changing needs of business and industry. This report shows agencies that received CTE federal and state funds and Mississippi Department of Employment Security Industry Employment Projections that reflect the expected future number of Mississippi workers to be employed in the labor market within a 10-year time period. The projections are compared with the total number of CTE programs taught in Mississippi during school year 2017-18.

SAFE AND ORDERLY SCHOOLS

The Safe and Orderly Schools School Safety Report includes counts on personnel trained and other accomplishments. The Transportation Report shows data for privately owned and publicly owned vehicles. The State Public School Building Fund Report contains information about capital improvements of schools in the state.

DISTRICT STUDENT INFORMATION

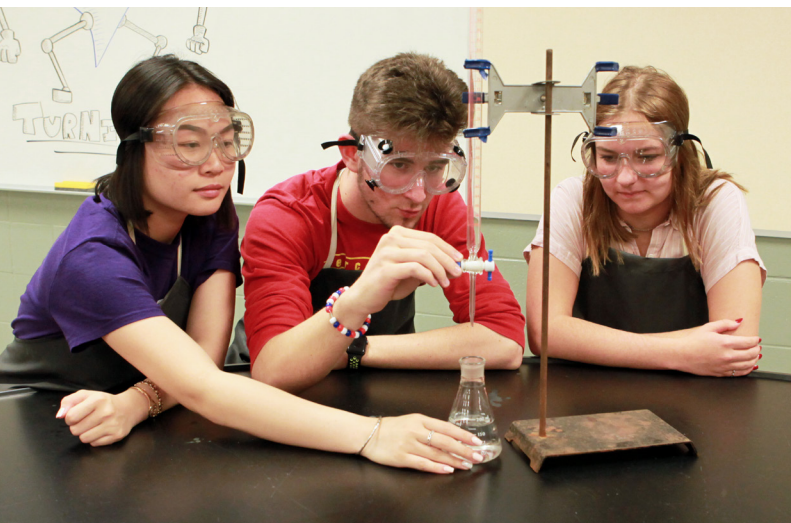
AVERAGE DAILY ATTENDANCE BY DISTRICT The Average Daily Attendance (ADA) information is reported from the Mississippi Student Information System for Months 1-9. ADA is the average number of pupils present each day school was in session during the period of the report. **Statewide, the total ADA is 439,599.**

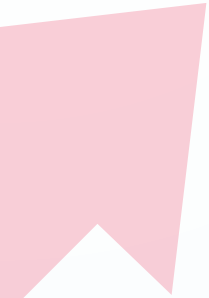
NET MEMBERSHIP BY GRADE Net membership is the number of students belonging to a school unit at any given time. The membership is an ever-changing number and is found by adding the total number of student entries and total student re-entries, and subtracting the number of withdrawals. This report is for reporting period for month 01. **Statewide, the total net membership is 477,633.**

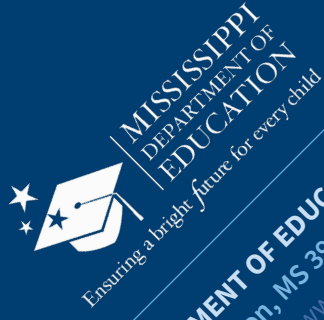
DISTRICT PERSONNEL INFORMATION

INSTRUCTIONAL PERSONNEL BY DISTRICT Data included in this section represents salary information reported by local school districts via the Mississippi Student Information System. This includes employees of the school district who are professionally trained and licensed to provide instruction and services to students enrolled in the school district.

CLASSROOM TEACHER COUNT AND AVERAGE SALARY Report represents salary information reported by local school districts, via the Mississippi Student Information System, which includes the total number of teachers, average pupil daily attendance per teacher, and the average classroom/instructional personnel salary. **There are 31,252 teachers statewide. The average teacher salary is \$44,926.**







MISSISSIPPI DEPARTMENT OF EDUCATION
Post Office Box 771 • Jackson, MS 39205-0771
www.mdek12.org

