

# Evidence-based Behavior Interventions

---

Laurie Weathersby, Ed.S., LDT, CALT

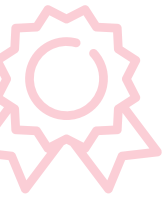
Bureau Director of Intervention Services

[mdek12.org](http://mdek12.org)



February 1, 2021





1

**ALL** Students Proficient and Showing Growth in All Assessed Areas



2

**EVERY** Student Graduates from High School and is Ready for College and Career



3

**EVERY** Child Has Access to a High-Quality Early Childhood Program

**EVERY** School Has Effective Teachers and Leaders

4



**EVERY** Community Effectively Uses a World-Class Data System to Improve Student Outcomes

5



**EVERY** School and District is Rated “C” or Higher

6



## VISION

To create a world-class educational system that gives students the knowledge and skills to be successful in college and the workforce, and to flourish as parents and citizens



## MISSION

To provide leadership through the development of policy and accountability systems so that all students are prepared to compete in the global community



- Welcome/Introduction
- State Board Policy
- Request for Proposals
- Evidence-based Behavior Interventions
  - ACT/MAWI
  - Committee for Children
  - Pearson
  - Rethink Ed
  - Ripple Effects
- Question and Answer





# State Board Policy 41.1

---



## Purpose

- behavioral and academic needs of every student are met through a tiered instructional model
- Every school district will follow the instructional model, which consists of three tiers of instruction:
  - Tier I: Quality Classroom instruction based on MS Curriculum Frameworks
  - Tier II: Focused supplemental instruction
  - Tier III: Intensive interventions specifically designed to meet the individual needs of students





## Interventions will be:

- Designed to address the deficit areas
- Evidence based
- Implemented as designed by the TST
- Supported by data regarding the effectiveness of interventions





# Request for Proposals

---

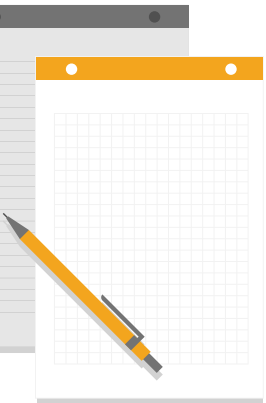


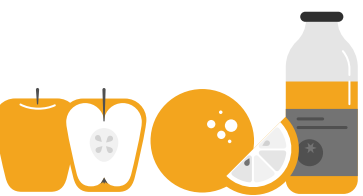


The MDE through the Office of Intervention Services solicited a request for competitive sealed qualifications (RFQ) from qualified vendors for evidence-based behavior interventions.

These interventions would address the behavioral needs for students in Tier II or Tier III and align with the Social Emotional Learning SEL competencies identified by CASEL

These behavioral and SEL interventions should include a face to face, virtual, or hybrid components.





The evidence-based behavior intervention will be used to improve the student's specific behavior deficiency as identified by a valid and reliable diagnosis assessment and used across the state.

Federal law requires that we select and implement evidence-based programs when using federal funds

The evidence-based behavioral and SEL intervention must include effective instructional strategies, and appropriate teaching methodologies necessary to assist the student in becoming successful

Every Student Succeeds Act



The program should provide explicit and systematic instruction

This will not be an all-inclusive or exhaustive list

Districts may choose their own evidence-based behavior and SEL intervention





**The purpose of this list is to provide districts with state-approved, evidence-based behavior interventions.**



# Evidence-based Behavior Interventions

---





# Mosaic by ACT

<https://www.mawilearning.com/>



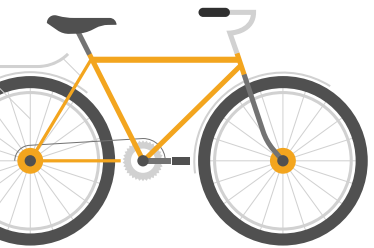
The screenshot shows the homepage of Mawi Learning. At the top left is the logo for Mawi Learning, which includes a stylized 'M' and the text 'Mawi Learning Powered by ACT'. To the right of the logo is a navigation menu with the following items: 'SEL for Students', 'SEL for Educators', 'What is SEL?', 'SEL Research', 'About Us', and 'Blog'. A blue 'Contact Us' button is located to the right of the navigation menu. Below the navigation menu is a large banner with a light blue background featuring a pattern of overlapping hexagons. The banner contains the text 'What's Your Learning Story?' in blue, followed by the Mosaic by ACT logo and the text 'Social Emotional Learning'. Below the banner, the text 'Thanks for visiting!' is displayed, followed by a paragraph: 'We've got exciting news. Mawi Learning is now Mosaic by ACT. This Means the great tools you know as Mawi Learning are now part of a comprehensive digital learning solution.'





Contact Name:  
Tyler Morris

Contact Information:  
864-314-2597  
[Tyler.morris@act.org](mailto:Tyler.morris@act.org)



## How to receive training...



The purchase of Mosaic SEL includes training on utilization of the curriculum and assessment for administrators and educators.



## Alignment with CASEL

CASEL, the Collaborative for Academic, Social, and Emotional Learning, is the nation's leader in supporting and influencing SEL practices and policies. ACT | Mawi Learning's student curriculum develops core CASEL aligned competencies.

[Learn more](#)



## How to utilize the program?

Mosaic's SEL curriculum, assessment, and educator Pd are digital solutions that can be administered in:

- Brick and mortar school setting
- Entirely virtual environment
- Or a combination of both





## Course Brochure



<https://documentcloud.adobe.com/link/track?uri=urn:aaid:scds:US:f86abee2-1ef3-4706-afcd-a91d581ac7e2>



## Overview Video




<https://documentcloud.adobe.com/link/track?uri=urn:aaid:scds:US:f86abee2-1ef3-4706-afcd-a91d581ac7e2>



# Committee for Children

<https://www.cfchildren.org/>



Committee for Children: Grow Kinder

Watch later Share


MORE VIDEOS

0:10 / 1:04

YouTube

**Leading the SEL Revolution**

Founded in 1979, Committee for Children's work is at the forefront of an innovative field, we champion the safety and well-being of children through social and emotional learning (SEL) to foster a peaceful world.



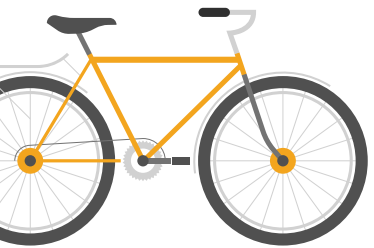
## Contact Name:

Kyra Rhoads

Education Partnerships Manager

Miriam Merliss

Education Account Manager



## Contact Information:

206-438-6521

[krhoads@cfchildren.org](mailto:krhoads@cfchildren.org)

206-438-6320

[mmerliss@cfchildren.org](mailto:mmerliss@cfchildren.org)





How to receive training...

Program training included within the program

Staff overview at program launch available at no additional cost

Implementation check-ins provided throughout the school year



## MTSS, RTI, PBIS

- [Alignment](#)

**How to utilize the program?**

## Restorative Practices in Schools

- [Alignment](#)

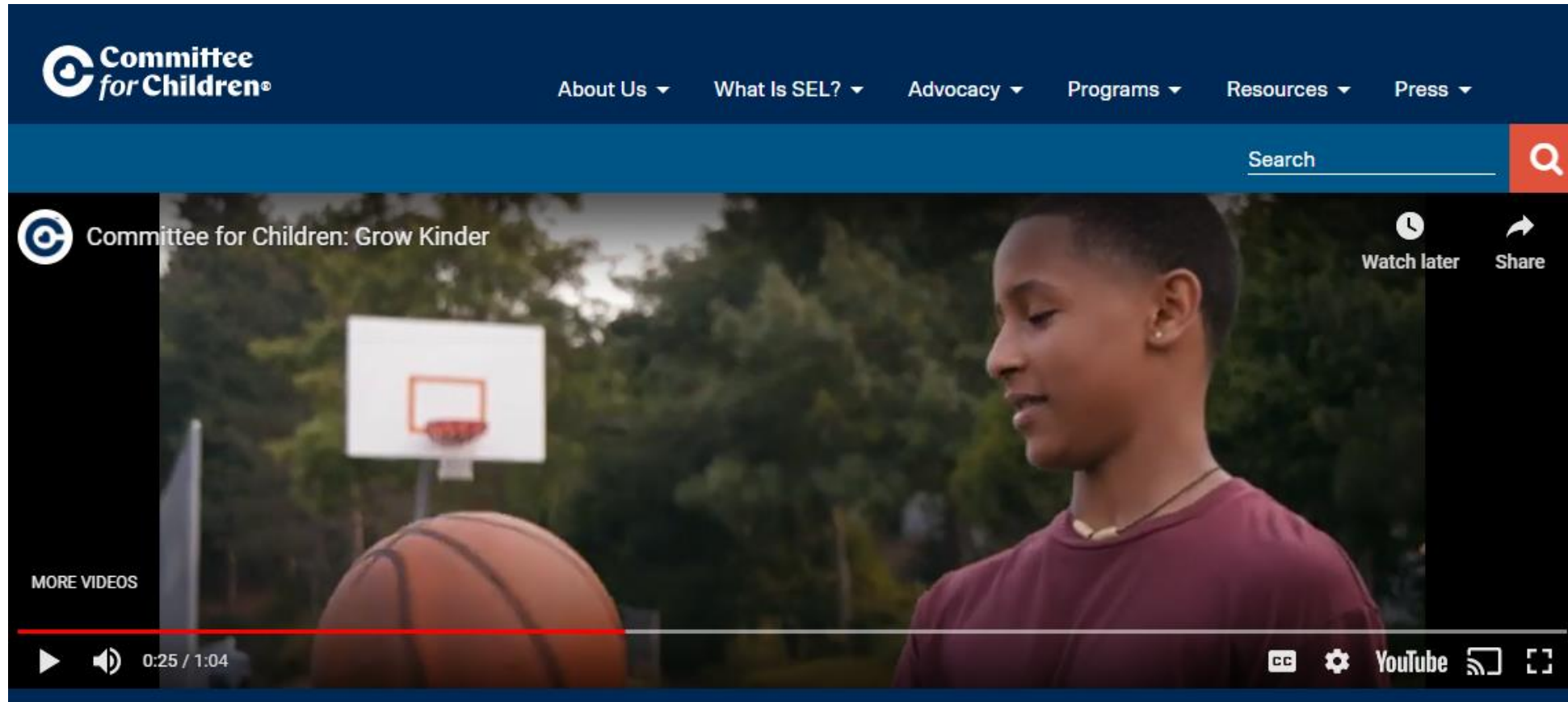
## Trauma-Informed Practices in Schools

- [Alignment](#)

## WSCC

- [Alignment](#)

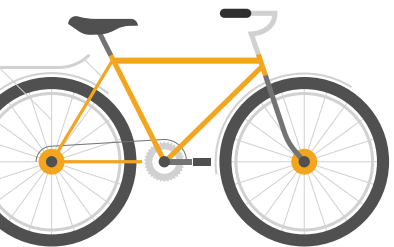




<https://youtu.be/6jGeKtwlwgo>



**The Second Step® family of programs provides a holistic approach to social-emotional Learning (SEL).**



Second Step® Elementary is research-based, easy to adapt and scale, available in printed classroom kits or new, fully web-based digital program. Program training included.

Second Step® Middle School is modern, web-based, easy-to-use interface, a full complement of nearly 200 advisory activities to reinforce weekly lessons, and program training.





# Pearson

<https://www.pearsonassessments.com/>



## SSIS Social-Emotional Learning Edition

### SSIS SEL

Frank M. Gresham, PhD, Stephen N. Elliott, PhD

SSIS™ Social-Emotional Learning Edition (SSIS SEL) is a comprehensive, evidence-based, social-emotional learning system that assesses key academic skills and integrates the different components with an aligned, multi-tiered intervention. Product includes Screening and Progress Monitoring Scales, Rating Forms, and Classwide Intervention Programs. [Guidance on using this test in your telepractice.](#)



Contact Name:  
Robert Dyson

Contact Information:  
469-264-1274  
[Robert.Dyson@pearson.com](mailto:Robert.Dyson@pearson.com)



## How to receive training...

Contact Robert Dyson  
469-264-1274

A tutorial video is embedded in the platform that explains how to administer the SSIS SEL screener. The lessons are scripted so additional teacher training is not needed. Speak with your Pearson representative above to purchase additional training.



## How to utilize the program?

The SSIS SEL Edition Class wide Intervention Program (CIP) for students in PreK-8 provides 30 units of study, aligned to the CASEL competencies, with three lessons in each unit.

The SSIS SEL CIP manual includes a description of an easy to understand six-step instructional process (Tell-Show-Do-Practice-Monitor Progress-Generalize). Each skill is taught using this explicit instruction process and includes, modeling, role-play, and practice activities. The program includes detailed lesson plans, grade-level appropriate supporting videos, and student activities to help teach/master key skills.



Pearson

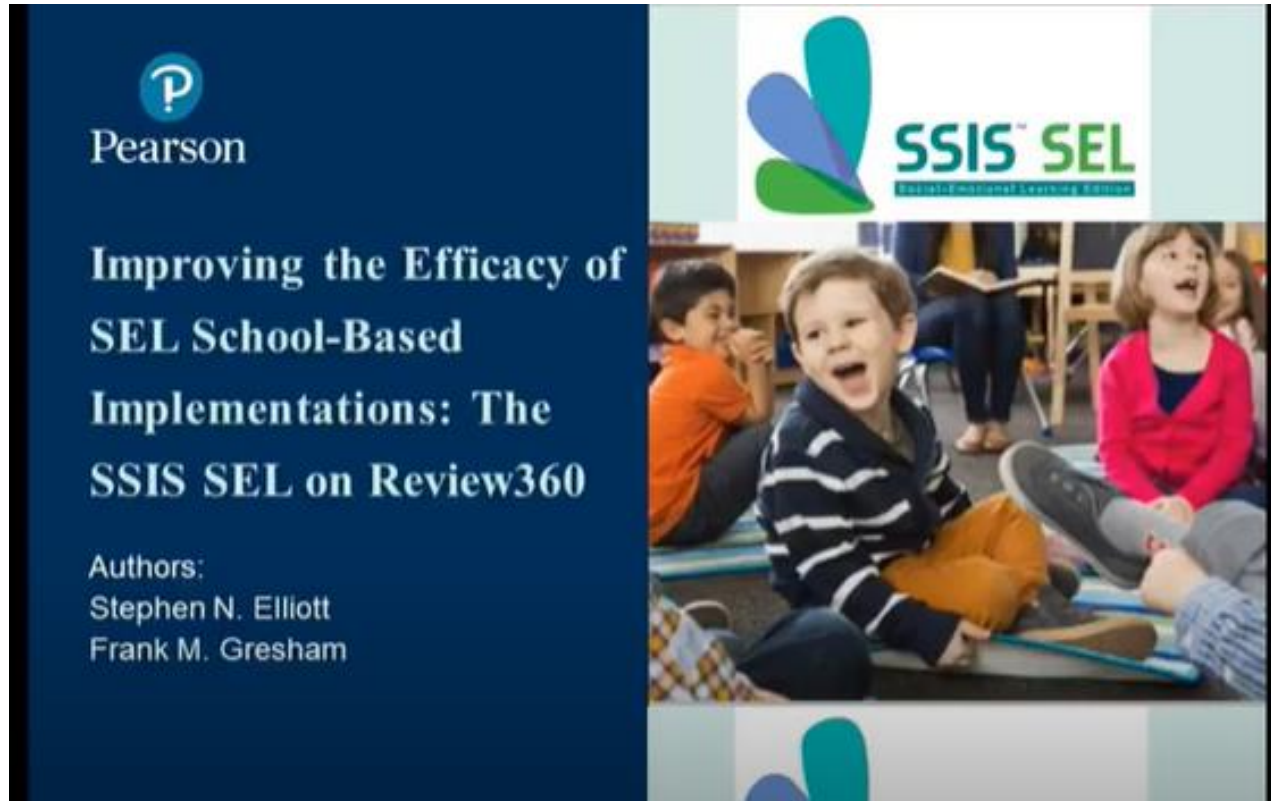
**SSIS™ Social-Emotional  
Learning Edition (SEL)**  
Available on Review360®



[Brochure Link](#)







Free webinar- “Improving the Efficacy of SEL school-based Implementations: The SSIS SEL on Review360”.

[https://youtu.be/\\_of33SmBs3c](https://youtu.be/_of33SmBs3c)



# Rethink Ed

---

## Rethink Ed

### What is Rethink Ed SEL?

Rethink SEL is a K-12 comprehensive solution that promotes well-being, connectedness and success for students and adults.

Focused on the entire school and community to promote healthy and confident students and adults.

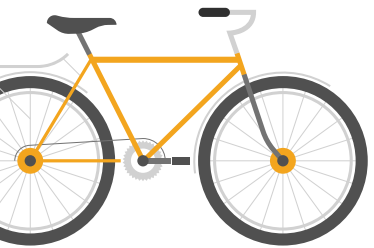
Technology offers flexibility, scale and cost effectiveness.

Develops self-awareness, self-management, responsible decision-making, relationship skills and social awareness.



Contact Name:

Lindsey  
Santarelli



Contact Information:

214-490-5118

[Lindsey.santarelli@rethinked.com](mailto:Lindsey.santarelli@rethinked.com)



**How to  
receive  
training...**

**Contact Lindsey Santarelli  
Lindsey.santarelli@rethinked.com**

**Request a Demo**

<https://go.rethinkfirst.com/COVIDNationalCampaignDemoAccess>





## How to utilize the program?

Rethink Ed SEL is an evidence-based program developed by a diverse panel of educational experts, and designed for **every educator and every student**. Fully web-based and designed for easy implementation, Rethink Ed SEL provides a **flexible and scalable solution** that empowers districts to successfully integrate and build a culture around social and emotional learning and behavior intervention into their schools and community.

**RETHINK ED**



**Social Emotional Learning and Mississippi Department of Education**

Supporting Evidence Based Behavior Intervention for Students in Tier II and Tier III Across the State of Mississippi



## Rethink Ed SEL

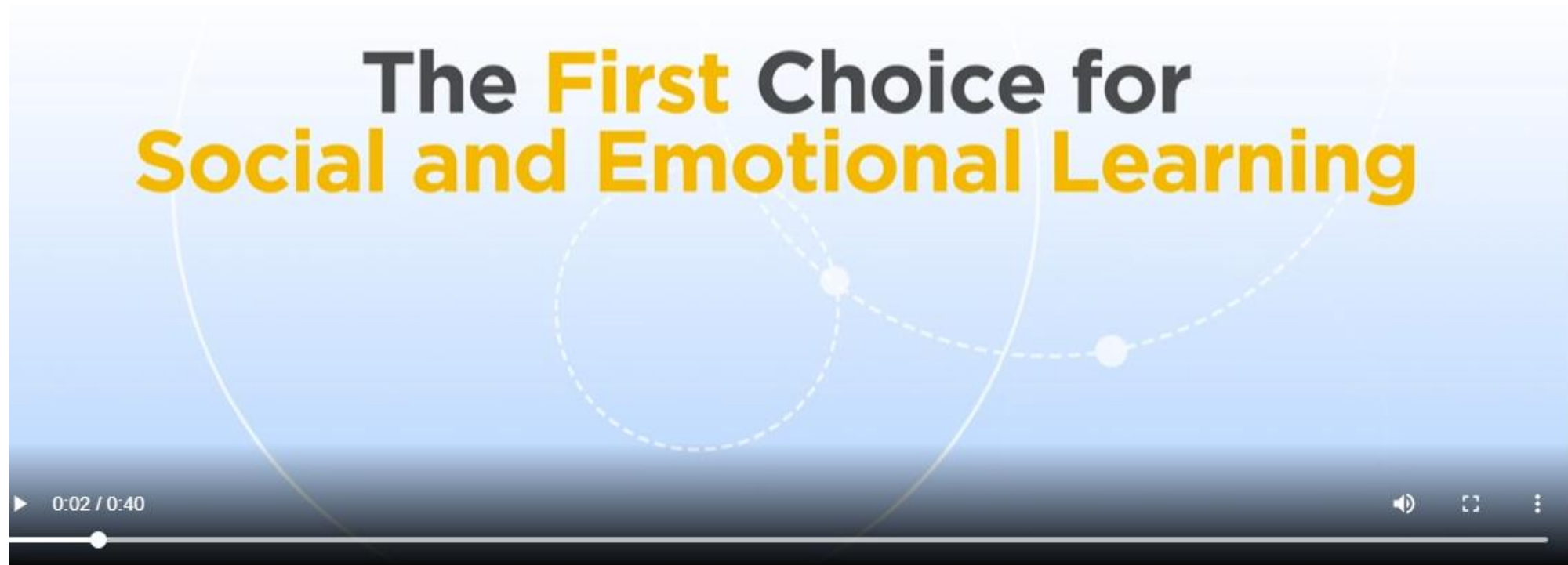
Awareness of Self & Others	Self Management	Social Skills	Social Awareness	Self-Care	SEL & Equity
Self Knowledge	Self-Control	Fairness	Cultural Competence	Mindfulness	Culturally Responsive Teaching
Emotions	Stress Management	Respect	Empathy	Self-Efficacy	Addressing Injustice
Values	Focus	Friendship	Safe & Ethical Behavior	Optimism	Leveraging SEL to Promote Equity
Wants & Needs	Problem Solving	Relationship	Support Systems	Self-Compassion	The Impact of Implicit Biases
Learning Skills	Goal Setting	Cooperation	Social Contributions	Self-Advocacy	
Growth Mindset	Resilience	Conflict Resolution	Actions & Consequences	Healthy Boundaries	

## Rethink Ed Mental Health Suite

Mental Health Suite
Anxiety
Bullying & Violence
Depression
Human Trafficking
Mental Wellness
Kindness to Animals
Reducing the Risk of Suicide
Substance Use Disorders
Trauma
Developing Healthy Identities
Digital Citizenship & Online Safety



Videos for teens, adult learners, teachers, families...

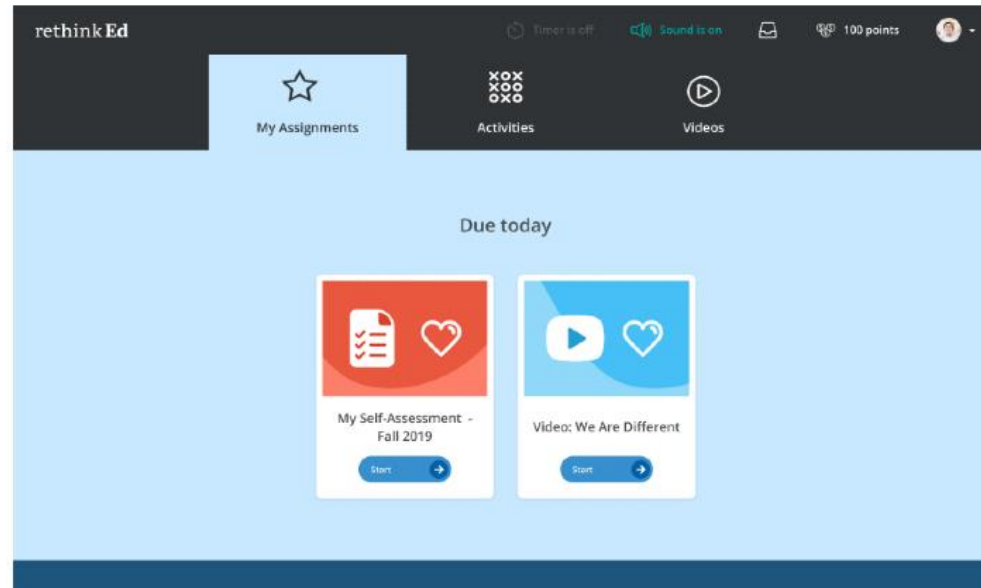


[https://www.rethinked.com/core/api/media/get/webinars/rethink\\_asd.mp4](https://www.rethinked.com/core/api/media/get/webinars/rethink_asd.mp4)



## SEL Student Center

In the Student Center, students can access videos, activities, and assessments. Teachers can assign quizzes after each lesson to **assess and monitor** learner progress.



## SEL Assessments

Rethink Ed SEL provides assessments designed to **understand and support** the development of students' SEL skills. Developed by industry leaders, each assessment uses positively phrased items to protect against discouraging students, and **measures concrete, observable, and malleable behaviors** that can be impacted by instruction and practice. The assessment items emphasize proactive academic, career, and citizenship behaviors.

### Assessment features include:

- ▶ Available to students in grades 3-12
- ▶ Pre and Post student surveys completed within 15 minutes
- ▶ Items administered/collected online
- ▶ Provides three types of reports that align with Rethink Ed student lessons:
  - ▶ Individual (Student)
  - ▶ Aggregate (Group Summaries)
  - ▶ Roster (List of Student Results)
- ▶ Reports include an overall SEL competency scale score and norm-reference statistics
- ▶ A featured individual/aggregate growth report for students who take the inventory more than once





# Ripple Effects

<https://rippleeffects.com/>

The screenshot shows the homepage of the Ripple Effects website. At the top left is the logo "rippleeffects" with a small ripple icon. To the right is a navigation menu with links for TOOLS, USERS, USES, IMPACTS, SUPPORT & SERVICES, PRIVACY, ABOUT US, and SIGN IN. A search bar and a hamburger menu icon are also present. Below the navigation is a dark blue banner with four columns: TOOLS (Assessment, Intervention, Data management), USES (MTSS, PBIS, Special Ed, Discipline & more), IMPACTS (Improves grades and behavior, increases resilience), and USERS (It builds me up, It changes lives). Below the banner are four featured content blocks: "True Stories" with a photo of two women, "Seeing I to I" with a graphic of two heads and a question mark, "Alice Ray Unfiltered" with a photo of an older woman, and "Webinars" with a photo of a keyboard.



Contact Name:

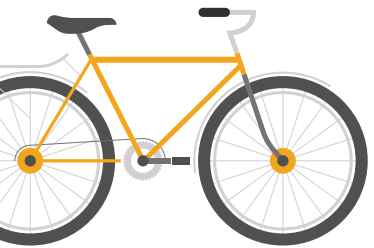
**Lew Brentano**

Vice president and  
CTO

Contact Information:

888-259-6618

lbrentano@rippleeffects.com



## How to receive training...

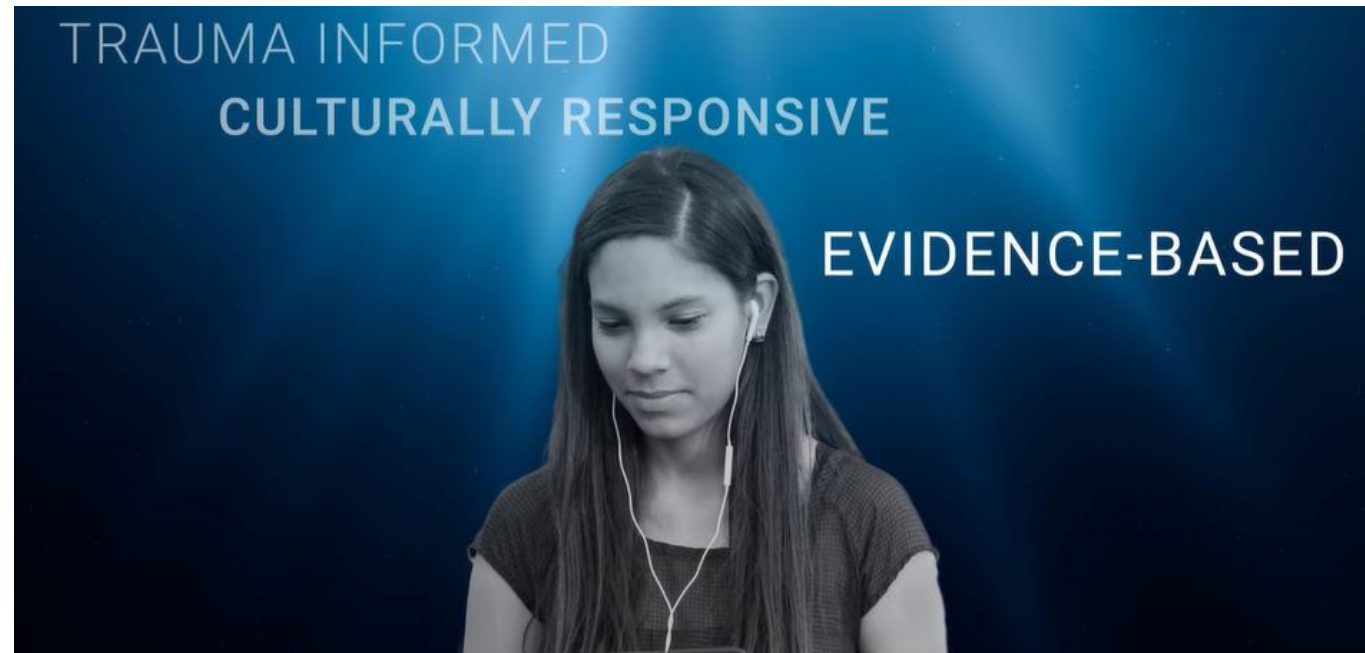
Contact Lew Brentano at [lbrentano@rippleeffects.com](mailto:lbrentano@rippleeffects.com)



**How to utilize the program?**

**Watch this video!**

<https://vimeo.com/383378079>



Feel free to try out the preK– 12 student programs and PD program (at no charge)

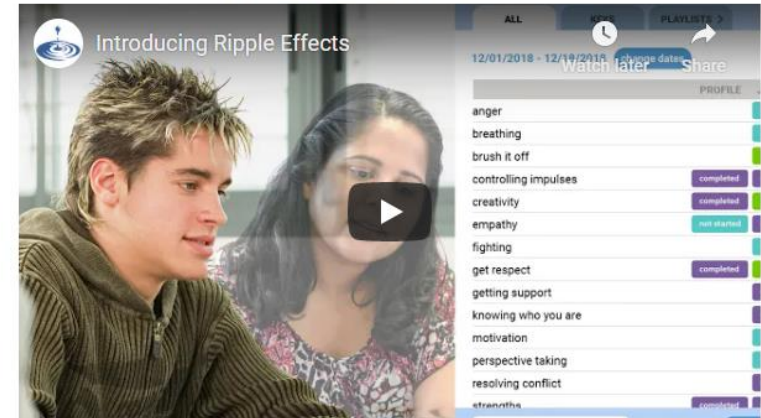
[rippleeffects.com/testdrive](http://rippleeffects.com/testdrive) MSDOE



TOOLS USERS USES IMPACTS SUPPORT & SERVICES PRI

## Take a Test Drive

*"How it Works" short video:*





# MDE Resources

---





[MTSS Guidance Document](#)

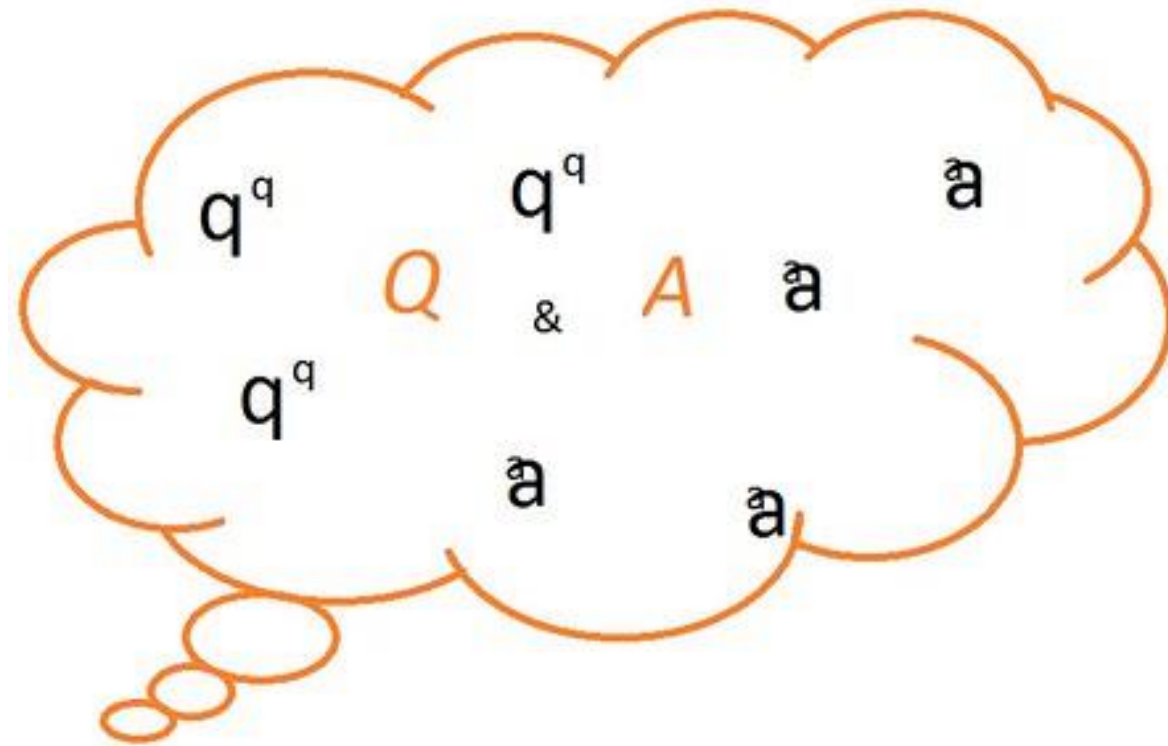
[Intervention Scheduling During a Pandemic](#)

[MTSS Professional Development Request](#)

[MTSS Flowchart for PreK-12](#)

[MTSS Documentation Packet](#)







# Laurie Weathersby, Ed.S., LDT, CALT

Bureau Director of Intervention Services

[lweathersby@mdek12.org](mailto:lweathersby@mdek12.org)

[mdek12.org](http://mdek12.org)



**Bureau Director**

Laurie Weathersby

[lweathersby@mdek12.org](mailto:lweathersby@mdek12.org)

**Academic Intervention Specialist**

Jayda Brantley

[jbrantley@mdek12.org](mailto:jbrantley@mdek12.org)

**Academic Intervention Specialist and Gifted Contact**

Mat Sheriff

[msheriff@mdek12.org](mailto:msheriff@mdek12.org)

**Behavior Specialist**

Ginger Koestler

[gkoestler@mdek12.org](mailto:gkoestler@mdek12.org)

**English Learner Specialist**

Sandra Elliott (PreK – 12)

[selliott@mdek12.org](mailto:selliott@mdek12.org)

