



2019

Natchez Convention
Center and Grand Hotel
NATCHEZ, MS

MISSISSIPPI

**EARLY
CHILDHOOD**

EDUCATION CONFERENCE

//// July 22-25, 2019 ////



LEAPING into LITERACY

Pre-K Literacy Project



The program will pilot the LENA Grow software to measure and improve the talk environment for infants and toddlers. The easy to use program uses a strengths based approach to enhance both child and teacher development.

This program will improve outcomes for children in four-year-old Head Start classrooms by implementing the Star Early Literacy Assessment.



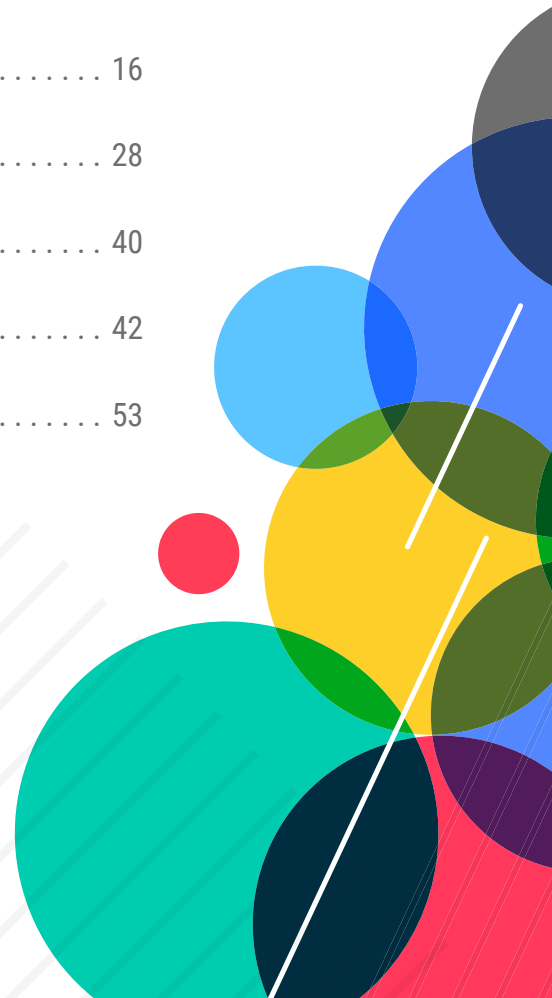
Our goal is to close gaps in cognitive, emotional, and social development to improve school readiness of children in Harrison, Hinds and Sunflower Counties.

Leaping into Literacy is an initiative to improve early language in infants and toddlers in Early Head Start classrooms and the language and literacy rates of children in four-year-old pre-k Head Start classrooms.

www.msheadstart.org/leap

TABLE OF CONTENTS

Letter from Mayor of Natchez	2
Letter from Mississippi Head Start Association	3
Letter from Mississippi Department of Education	4
Mission Statements	5
General Information	6
Code of Conduct	7
Conference At-a-Glance	8
Natchez Convention Center and The Grand Hotel Floor Plans	9
Monday, July 22	12
Tuesday, July 23	16
Wednesday, July 24	28
Thursday, July 25	40
Presenter Bios	42
Sponsor and Vendor Index	53





GREETINGS,

As Mayor of the City of Natchez, it is my great pleasure to welcome the Mississippi Head Start Association to our wonderful city. Our community is blessed with a rich history with contributions from the American Indian, French, African, Spanish, English, Scottish and Jewish cultures, to name a few. Natchez's beautiful downtown and residential areas, combined with a solid business community, create an ideal environment for living and working.

In Natchez, you'll find grace, style and southern hospitality. The historic charm of Natchez is illustrated in the community's downtown district, which is listed on the National Register of Historic Places. We hope your schedule will allow you to take time to shop in our city, eat in one of our many great restaurants and enjoy our vibrant nightlife.

Thank you for choosing Natchez to hold your conference and we hope that your time in Natchez is memorable.

Sincerely,

Darryl V. Grennell
Mayor

OFFICE OF THE MAYOR

NATCHEZ CITY HALL • 124 SOUTH PEARL ST • PO BOX 1185 • NATCHEZ, MISSISSIPPI 39120
PHONE 601-445-7500 • FAX 601-442-2536 • WWW.CITYOFNATCHEZ.MS.US



Mississippi Head Start Association

Executive Office

921 North Congress ~ Jackson, MS ~ 39202

601.969.6979 telephone ~ 601.969.6728 fax

May 31, 2019

Dear Participants,

Greetings! It gives me great pleasure to welcome all of you to the "2019 Early Childhood Education Conference" here in Natchez, MS. On behalf of the Mississippi Head Start Association, Mississippi Department of Human Services and Childcare partners, I applaud the commitment of us working together and contributing to improving the lives of the children and families we serve.

I want to take this opportunity to express my strong continued support for all your efforts and dedication to improve the quality of services we provide to Mississippi's most vulnerable children and families. The conference theme is "**Focusing on Quality and Developmentally Appropriate Instructional Practices.**" As participants at this conference, let us listen intensively so we can work together in harmony with our co-workers, community partners, local officials, and our parents. As a community, we must rely on each other to make our community a better place to live.

Lastly, I want to acknowledge the hard work of the Conference Planning Committee because we know that these individuals who created such an informative and educational conference, placed a lot of time and effort to ensure the sessions are beneficial. The connections with other educators will create new opportunities for advancement and I wish the best for an enjoyable and memorable conference. Please attend your sessions and take notes, so you can improve your teaching strategies at your organization.

Warm Regards,

A handwritten signature in black ink that reads "Eloise McClinton".

Eloise McClinton

Mississippi Head Start Association, President



MISSISSIPPI DEPARTMENT OF EDUCATION

Carey M. Wright, Ed.D.
State Superintendent of Education

July 22, 2019

Dear Early Childhood Leaders:

On behalf of the Mississippi Department of Education, I am pleased to welcome you to the 2019 Early Childhood Education Conference. It is my hope that this conference will help you grow professionally and equip you with new ideas and information to help young children build a strong foundation for success in school and life.

As early childhood educators and leaders, you are leading the effort to prepare Mississippi's youngest children for a successful future. I value your work because I am a firm believer in the power of high-quality early childhood education to help children develop socially, emotionally and academically. Your work has the support of state legislators, business leaders, parent and community organizations, and the Mississippi State Board of Education, which has made increasing access to high-quality early childhood education one of its top priorities.

Thanks to you, Mississippi's early childhood education programming is making a positive difference in the lives of young children and has earned the state recognition from the National Institute for Early Education Research.

I want to thank the Mississippi Head Start Association, the Mississippi Department of Human Services and our other partners for sponsoring this conference. I am committed to working with others who share my passion for building a comprehensive system for early childhood care and education in Mississippi.

Sincerely,

A handwritten signature in black ink that reads "Carey M. Wright". The signature is written in a cursive, flowing style.

Carey M. Wright, Ed.D.
State Superintendent of Education

MISSION OF PARTNERS

MISSISSIPPI HEAD START ASSOCIATION

The Mississippi Head Start Association's (MHSA) mission is to provide the state's children and families with a range of individualized services in the areas of education, early childhood development, medical, dental, mental health, nutrition and parent involvement. MHSA embraces a set of core values which promotes wellness, respects families' cultures and diversity, and supports family empowerment and community development.

Goals:

- To enhance children's physical, social, emotional and cognitive development
- To enable parents to be better caregivers and teachers to their children
- To help parents meet their own goals, including economic independence

MISSISSIPPI HEAD START STATE COLLABORATION OFFICE

The Mississippi Head Start Collaboration Office facilitates communication and coordination of services, alignment of planning, enrollment, administration, and reporting systems among State and local leadership across funding streams and disciplines. More specifically, the HSCCO enhances collaborative partnerships that:

- Assist in building early childhood systems and access to comprehensive services and support for all low-income children;
- Promote widespread collaboration and partnership between Head Start and other appropriate programs, services, and initiatives, including child care and State preschool; and
- Facilitate the involvement of Head Start in the development of State policies, plans, processes and decisions affecting the Head Start target population and other low-income families.

MISSISSIPPI DEPARTMENT OF EDUCATION, OFFICE OF EARLY CHILDHOOD

The Mississippi Department of Education (MDE) seeks to create a world-class educational system that gives students the knowledge and skills to be successful in college and in the workforce, and to flourish as parents and citizens. MDE provides leadership through the development of policy and accountability systems so that all students are prepared to compete in the global community.

The Office of Early Childhood provides professional development trainings and job-embedded technical assistance to impact the knowledge of educators on early childhood education. Early childhood is a critical time in the development of every child. The learning that takes place during the first eight years of life serves as the foundation for all later academic, social, emotional, physical and motor development.

MISSISSIPPI DEPARTMENT OF HUMAN SERVICES

The Mississippi Department of Human Services is dedicated to serving others while providing a wide range of public assistance programs, social services, and support for children, low-income individuals and families. The agency seeks to empower families so they can become self-sufficient and responsible for their future success.



WELCOME

The Mississippi Head Start Association, Mississippi Head Start Collaboration Office, Mississippi Department of Education Office of Early Childhood, and the Mississippi Department of Human Services is pleased to welcome you to the 2019 Early Childhood Conference in Natchez, Mississippi.

This conference is brought to you through our mutual, collaborative partnership between the Mississippi Head Start Association, Mississippi Head Start Collaboration Office, Mississippi Department of Education, and the Mississippi Department of Human Services.

It's an exciting time for Early Childhood in our state as we continue to grow, remaining always adaptable, motivated, and responsive to the needs of ALL children. The world of education is an exciting area in which to work, and we'll continue to meet and bring inspired people together in forums like this, to ensure our educational system remains at the cutting edge in Mississippi and globally.

NEED ANYTHING?

If you have immediate conference-related needs or questions, please do not hesitate to seek assistance at the registration table, where staff are available to assist you. Also, please know that the Mississippi Head Start Association, Mississippi Head Start Collaboration Office, Mississippi Department of Education Office of Early Childhood, and the Mississippi Department of Human Services staff are happy to support you with answers to specific program questions.

TELL US WHAT YOU THINK!

Your feedback allows us to continually develop and strengthen our programs to better meet the needs of our conference participants. At the end of each session and at the end of the conference, you will be provided with an evaluation form that we hope you will complete to help us serve you better.

THANK YOU!

The Mississippi Head Start Association, Head Start Collaboration Office, Department of Education Office of Early Childhood, and the Mississippi Department of Human Services would like to thank each of you for attending this conference and bringing your expertise to this gathering. You, as organization leaders, have the vision, the knowledge, and the experience to help us pave our way into the future. You are truly our greatest asset today and tomorrow, and we could not accomplish what we do without your support and leadership. Throughout this conference, we ask you to stay engaged, keep us proactive and help us shape the future of early childhood education in our state.



CODE OF CONDUCT

ALLOW EXTRA TIME Please allow yourself extra time to get to sessions due to a limited number of elevators.

ATTEND ALL SESSIONS AND EVENTS Conference breakout sessions and events are planned with a great deal of care based on the needs and recommendations of conference attendees.

QUIET PLEASE Voices carry, even when we whisper. Out of respect for the presenters and the fellow conferees, please refrain from side conversations during keynote presentations, concurrent breakout sessions, and in the hallways while sessions are in progress.

EARLY IS ON TIME Conference schedules are usually very tight, with little wiggle room. Please arrive early to attend your first choice in sessions, minimize distractions, and keep on schedule.

NAME BADGES Only registered conference participants may attend the sessions. Participants are asked to wear their badges always.

CLOSED MEANS FULL In accordance with state fire codes, all concurrent breakout sessions are set to capacity. If your session is full, please do not ask for or bring in extra chairs. This could result in a fine/citation for the facility and/or the conference sponsors.

EAT IT THERE Food served must be consumed on site. Health codes prohibit the removal of food from the event. Please take only what you can eat and do not ask for carry-out boxes, etc.

KEEP AND READ Conference booklets are printed per the number of registered participants and vendors. Please carry your booklet with you always and note any schedule changes or cancellations.

CELL PHONES Please set all cell phones and other electronic devices to silent or vibrate.

OVER PLEASE To facilitate seating, be so kind as to fill the rooms front to back and left to right. This will make seating easier and faster.

CONFERENCE AT-A-GLANCE

Conference registration includes general sessions, concurrent breakout sessions, and admittance to the Taste of Natchez. This schedule is tentative and subject to change. Please wear your name badge at all times.

MONDAY /// JULY 22 ///

- 10:00a – 5:00p Registration [Natchez Convention Center]
- 10:00a – 5:00p Vendor and Exhibitor Setup
- 12:00p – 2:00p Lunch-N-Learn Pre-conference – Stepping into STEM Make-N-Take [Nashville Room]
- 2:15p – 3:30p Concurrent Breakout Sessions I
- 3:30p – 3:45p Break
- 3:45p – 5:00p Concurrent Breakout Sessions II
- 5:30p – 7:00p Opening Session [Nashville Room]; Keynote: Stacey Bess

TUESDAY /// JULY 23 ///

- 7:00a – 2:00p Registration [Natchez Convention Center]
- 8:30a – 9:45a Concurrent Breakout Sessions I
- 9:45a – 10:00a Break
- 10:00a – 11:15a Concurrent Breakout Sessions II
- 11:15a – 1:00p Lunch on your own
- 1:00p– 2:00p Keynote: Community Connections
- 2:00p – 2:15p Move to Learn
- 2:15p – 2:30p Break
- 2:30p – 3:45p Concurrent Breakout Sessions III
- 3:45p– 4:00p Break
- 4:00p – 5:15p Concurrent Breakout Sessions IV

WEDNESDAY /// JULY 24 ///

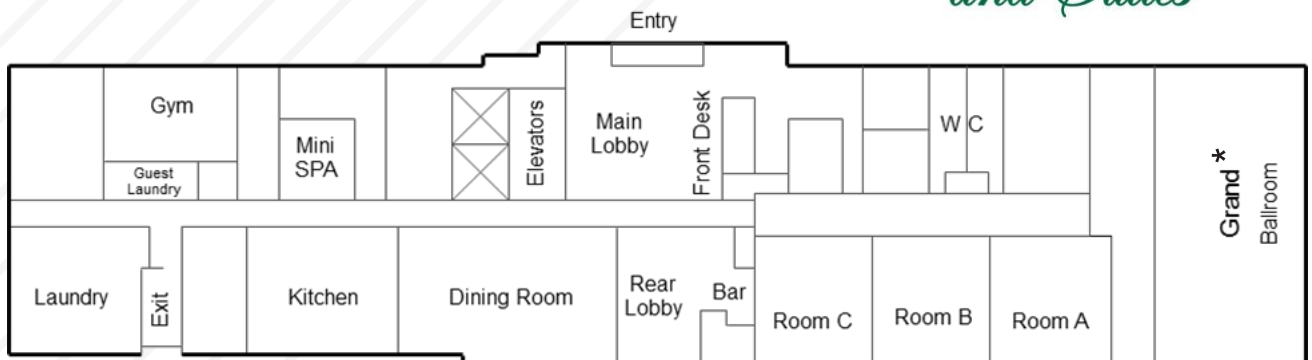
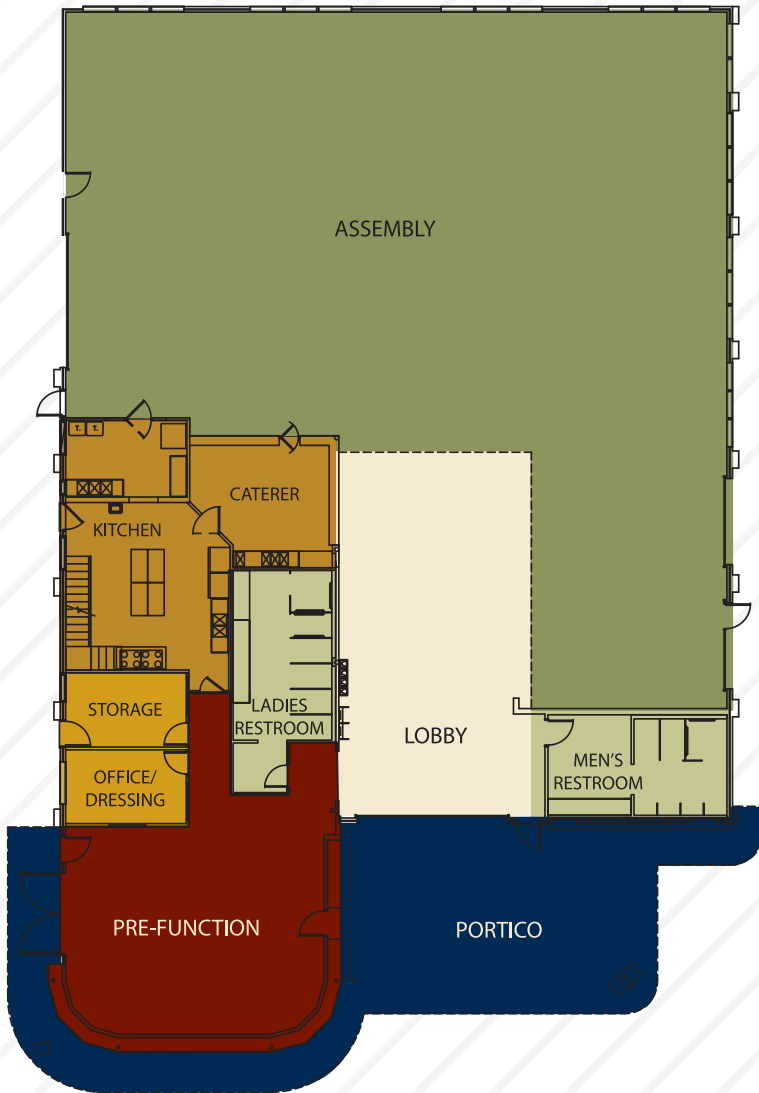
- 7:00a – 2:00p Registration [Natchez Convention Center]
- 8:30a – 9:45a Concurrent Breakout Sessions I
- 9:45a – 10:00a Break
- 10:00a – 11:15a Concurrent Breakout Sessions II
- 11:15a – 1:00p Lunch on your own
- 1:00p– 2:15p Keynote: Susan Buttross, M.D., FAAP
- 2:15p – 2:30p Break
- 2:30p – 3:45p Concurrent Breakout Sessions III
- 3:45p– 4:00p Break
- 4:00p – 5:15p Concurrent Breakout Sessions IV
- 5:30p– 7:30p Taste of Natchez

THURSDAY /// JULY 25 ///

- 8:30a – 9:45a Closing Keynote
- 9:45a – 10:00a Break
- 10:00a – 11:00a Closing Session and Remarks

FLOOR PLANS

Natchez Community Center



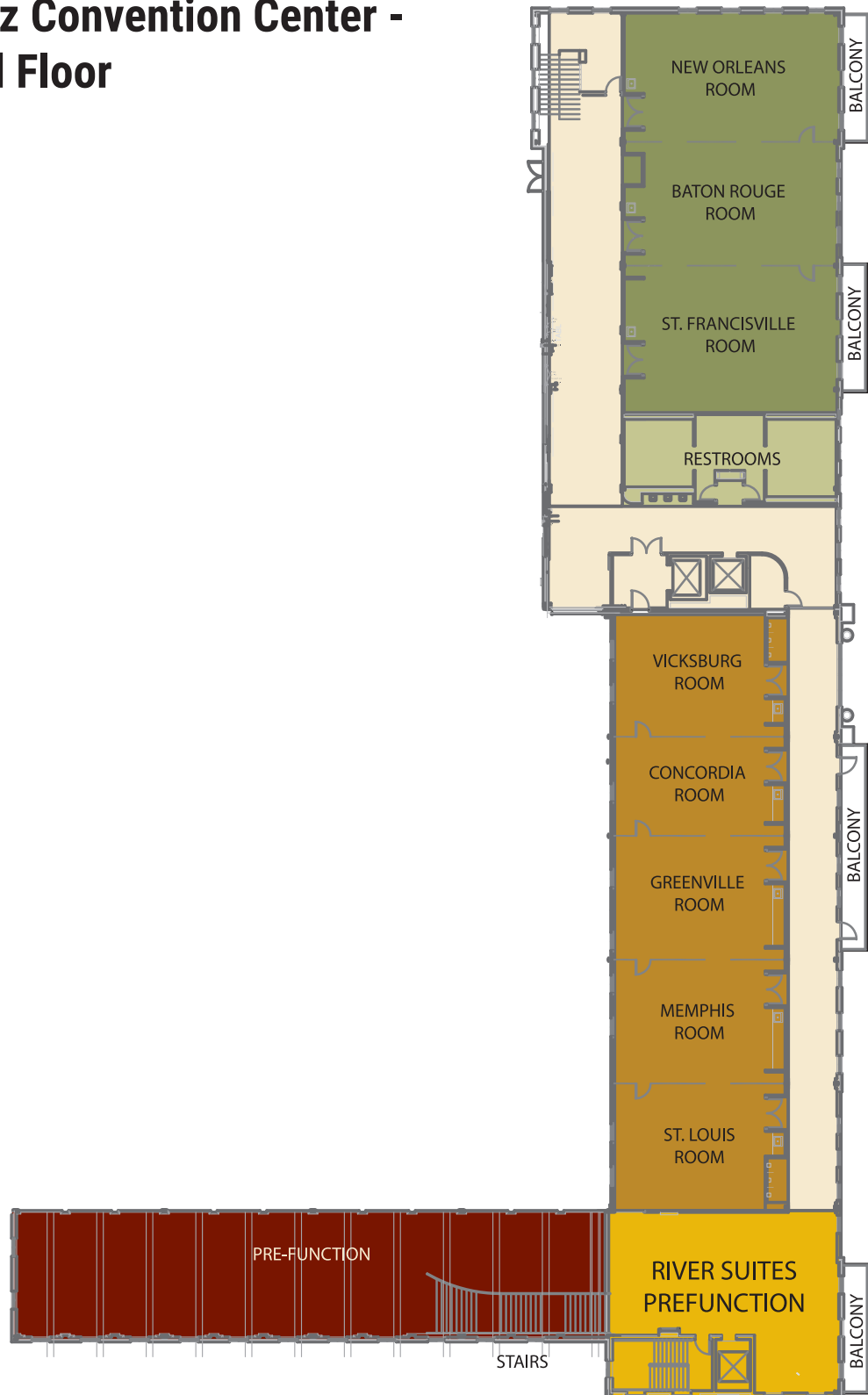
*The Grand Ballroom sub-divides into the Carolyn Room and the Rose Room.

FLOOR PLANS

Natchez Convention Center - First Floor



Natchez Convention Center - Second Floor



AGENDA

/// JULY 22 ///

10:00a – 5:00p	Registration
10:00a – 5:00p	Vendor and Exhibitor Setup
12:00p – 2:00p	<p>Lunch-N-Learn and Make-N-Take Stepping into STEM: The Powerful Link Between STEM and Early Childhood Education // // // // Amye Hoskins and Monica May NASHVILLE</p>
2:15p – 3:30p	<p>Concurrent Breakout Sessions 1 BATON ROUGE, NEW ORLEANS, ST. FRANCISVILLE, & VICKSBURG</p>
3:30p – 3:45p	Break
3:45p – 5:00p	<p>Concurrent Breakout Sessions 2 BATON ROUGE, NEW ORLEANS, ST. FRANCISVILLE, & VICKSBURG</p>
5:30p – 7:00p	<p>Opening Session NASHVILLE</p> <p>Welcome // // // // City of Natchez Opening Remarks // // // // Bridgette Jackson Introduction of Speaker // // // // Holly Spivey</p> <p>Keynote Speaker // // // // Stacey Bess Closing Remarks // // // // Holly Spivey</p>

KEYNOTE SPEAKER

Stacey Bess is an inspirational educator and author who speaks on the importance of service, mentorship and leadership, and overcoming adversity. Drawing on her fascinating and inspirational personal story—teaching homeless children in a small shed known as The School with No Name—she offers powerful insights and lessons that audiences yearning to make a difference can apply to their community or organization.

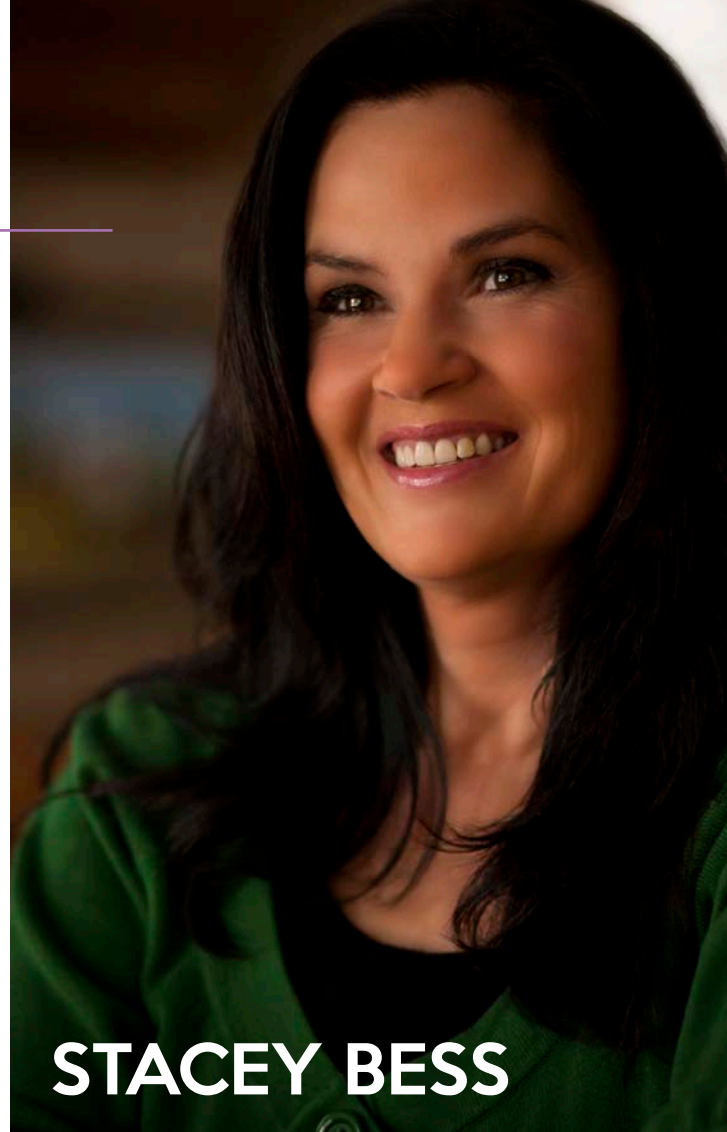
Through ups and downs and many personal struggles—including a battle with thyroid cancer—Bess taught kindergarten through sixth grade for 11 years at The School with No Name, an experience that effected a profound change in the teacher as well as her students.

During that time, she discovered that, by teaching and modeling love, self-worth, personal power, and courage, she could reach children with no homes and little hope, children who had previously been labeled unteachable.” These children grew into living proof that Bess’ methods work. To inspire and motivate others with a passion for service, Bess penned the memoir *Nobody Don’t Love Nobody*, which was adapted into the April 2011 Hallmark Hall of Fame movie *Beyond the Blackboard* starring Emily VanCamp.

After she published her first book and gained the support of the Utah community, Bess gained nationwide recognition for her unusual success with “hopeless” children. She has won prestigious local and national awards. A highlight came when she was honored with the esteemed National Jefferson Award for Greatest Public Service along with First Lady Barbara Bush, Supreme Court Justice Harry Blackman, and Ambassador Walter Annenberg.

Stacey Bess earned her bachelor’s degree in elementary education from the University of Utah and continues to be a leading advocate in the nation for the educational rights of impoverished children.

A dynamic and powerful speaker, she engages groups large and small, sharing the story that changed her life as she taught and nurtured hundreds of underprivileged children. Her story continues to change lives as her audiences are inspired to become more involved in their own communities.



STACEY BESS

1

CONCURRENT BREAKOUT SESSIONS

///// 2:15p – 3:30p

Exchange, Explain, and Expand: How Teachers Help Children Change their Understanding of Thoughts or Ideas

*Heather Walker, Jennifer Bettis,
& Merry Pennell*
VICKSBURG

Deep and Wide: How Teachers Help Children Deepen and Expand their Understanding of Themes and Ideas

*Lisa Blaylock, Dyon Ruffin,
Ingrid Woodfox, & Deeda Paul*
ST. FRANCISVILLE

Converse and Connect: How Teachers Practice Conversations in the Classroom

*Bridgit Harper, Rasheedah Muhammad,
& Marisa Prewitt*
BATON ROUGE

Hook and Anchor: How Teachers Provide Access and Hook Children's Interest into Learning through Play

*Demetrius Moore, Tayika Lewis,
& Adrienne Mercer*
NEW ORLEANS

2

CONCURRENT BREAKOUT SESSIONS

///// 3:45p – 5:00p

Exchange, Explain, and Expand: How Teachers Help Children Change their Understanding of Thoughts or Ideas

*Heather Walker, Jennifer Bettis,
& Merry Pennell*
VICKSBURG

Deep and Wide: How Teachers Help Children Deepen and Expand their Understanding of Themes and Ideas

*Lisa Blaylock, Dyon Ruffin,
Ingrid Woodfox, & Deeda Paul*
ST. FRANCISVILLE

Converse and Connect: How Teachers Practice Conversations in the Classroom

*Bridgit Harper, Rasheedah Muhammad,
& Marisa Prewitt*
BATON ROUGE

Hook and Anchor: How Teachers Provide Access and Hook Children's Interest into Learning through Play

*Demetrius Moore, Tayika Lewis,
& Adrienne Mercer*
NEW ORLEANS

LUNCH-N-LEARN AND MAKE-N-TAKE // // // 12:00p – 2:00p**Stepping into STEM: The Powerful Link Between STEM and Early Childhood Education**

This interactive session will help support early childhood educators and administrators in gaining a greater understanding of science, technology, engineering and math (STEM) with a little bit of “artistic” STEAM. Participants will be empowered to integrate STEM in Pre-K classrooms on a regular basis. Participants will see how all educators can create STEM/STEAM opportunities for young learners that include hands-on experiences that allow children to explore their curiosities, interests, and develop and test theories in everyday situations.

Amye Hoskins and Monica May

NASHVILLE

CONCURRENT BREAKOUT**SESSIONS 1 & 2**

2:15p – 3:30p and 3:45p – 5:00p

Exchange, Explain, and Expand: How Teachers Help Children Change their Understanding of Thoughts or Ideas

How are you responding to your children? Come and find out how these teachers help children change their understanding of thoughts and ideas. Learn how to exchange, explain and expand on children’s ideas and comments while engaging in developmentally appropriate play and learning.

Heather Walker, Jennifer Bettis, & Merry Pennell

VICKSBURG

Deep and Wide: How Teachers Help Children Deepen and Expand their Understanding of Themes and Ideas

Dig into how teachers can help children deepen and expand their understanding of themes and ideas. Learn new ways to engage children in conversations and discussions that will help promote higher-order thinking skills and application of learning across content areas.

Lisa Blaylock, Dyon Ruffin, Ingrid Woodfox, & Deeda Paul

ST. FRANCISVILLE

Converse and Connect: How Teachers Practice**Conversations in the Classroom**

Talk is NOT cheap! Listen and learn how classroom teachers use everyday conversations in the classroom to expose children to rich language and complex sentences. This session will give teachers ways to model and extend language within the early childhood classroom.

Bridgit Harper, Rasheedah Muhammad, & Marisa Prewitt

BATON ROUGE

Hook and Anchor: How Teachers Provide Access and Hook Children’s Interest into Learning through Play

Come and see how these teachers are hooking their children’s interest and reeling them into learning through play. Learn tips and tricks that will help motivate and engage children in the learning activities that you provide for them on a daily basis.

Demetrius Moore, Tayika Lewis, & Adrienne Mercer

NEW ORLEANS

TUESDAY

AGENDA

/// JULY 23 ///

7:00a – 2:00p	Registration
8:30a – 9:45a	Concurrent Breakout Sessions 1 NATCHEZ CONVENTION CENTER, GRAND HOTEL, & COMMUNITY CENTER
9:45a – 10:00a	Break
10:00a – 11:15a	Concurrent Breakout Sessions 2 NATCHEZ CONVENTION CENTER, GRAND HOTEL, & COMMUNITY CENTER
11:15a – 1:00p	Lunch on your own
1:00p – 2:00p	Keynote: Community Connections NASHVILLE Welcome, Introductions, and Remarks ///// Presenter ///// Facilitator ///// Panelists ///// <i>Dr. Chad Allgood, Dr. Eileen Beazley, Rachel Canter, Joyce Greer, Toni Kersh, and Eloise McClinton</i>
2:00p – 2:15p	Move to Learn
2:15p – 2:30p	Break
2:30p – 3:45p	Concurrent Breakout Sessions 3 NATCHEZ CONVENTION CENTER, GRAND HOTEL, & COMMUNITY CENTER
3:45p – 4:00p	Break
4:00p – 5:15p	Concurrent Breakout Sessions 4 NATCHEZ CONVENTION CENTER, GRAND HOTEL, & COMMUNITY CENTER

SPONSORS //////////////////////////////////////////////////////////////////////////////////////////////////////////////////////////////////



NICK FLOYD
& ASSOCIATES
INNOVATIVE • EXCELLENCE



CONCURRENT BREAKOUT SESSIONS // 8:30a – 9:45a

A Day in the Early Childhood Classroom Make-N-Take (DOUBLE SESSION)

MDE Coaches
COMMUNITY CENTER

Artistic Exploration Make-N-Take (DOUBLE SESSION)

Limeul Eubanks
COMMUNITY CENTER

Introduction of the K-3 CLASS Tool

Joyce Greer
ST. LOUIS

Oral Health Messages to Share with Parents

Carla Bassett
MEMPHIS

Making Adjustments: Meeting the Needs of Diverse Learners through Classroom Adaptations

Candice Taylor
GREENVILLE

Trauma-Informed Strategies for the Early Childhood Classroom

Lori Staton, Julie Parker, Melissa Tenhet, & Cappe Hallberg
CONCORDIA

Child Care Payment Program Dare to Dream Discussion

Andrea Sanders & Kristi Mchale
VICKSBURG

Celebrating Differences: Standards-Based Language & Literacy Lessons That Focus on Creating Anti-Bias & Bully-Proof Classrooms

Kenya Wolff & Tess Johnson
ST. FRANCISVILLE

All New! A Million Dollar Classroom on a Dollar Store Budget

Tunga Otis
BATON ROUGE

Mooving Into Center Based Learning (DOUBLE SESSION)

Carol Bishop & Sandra Smith
NEW ORLEANS

#tech4littles: Effectively Incorporating Technology into the Early Childhood Classroom

Melissa Banks
NASHVILLE

"Making It": A Day in the Life of Infants/Toddlers (DOUBLE SESSION)

Gena Puckett & Cathy Hollingshed
GRAND HOTEL CONFERENCE A

My Many Colored Days: Mental Health Awareness in Early Childhood

Rebekah Harrington
GRAND HOTEL CONFERENCE B

Language Development: Infants and Toddlers

Tamara Smith & Ornette Lee
GRAND HOTEL CONFERENCE C

Understanding & Responding to Infants & Toddlers: Cues, Communication, & Temperament

Brittany Herrington
GRAND HOTEL ROSE

Talk, Read, & Sing Together Every Day! Tips for Infant & Toddler Teachers & Caregivers

Elizabeth Simmons
GRAND HOTEL CAROLINE

CONCURRENT BREAKOUT SESSIONS

A Day in the Early Childhood Classroom Make-N-Take (DOUBLE SESSION)

MDE Coaches
COMMUNITY CENTER

Artistic Exploration Make-N-Take (DOUBLE SESSION)

Limeul Eubanks
COMMUNITY CENTER

Storytelling as Advocacy: What YOU Can Do to Promote the Early Learning Collaboratives

Rachel Canter
ST. LOUIS

Early Literacy for English Learners

Sandra Elliott & Laurie Weathersby
MEMPHIS

My Many Colored Days: Mental Health Awareness in Early Childhood

Rebekah Harrington
GREENVILLE

Trauma-Informed Strategies for the Early Childhood Classroom

Lori Staton, Julie Parker, Melissa Tenhet, & Cappe Hallberg
CONCORDIA

Become a Brain Builder: Understanding the Importance of Supporting Early Development

Lisa Long & Alicia Westbrook
VICKSBURG

It Takes a Community for Everything to Grow! Standards-Based Strategies for Integrating Nutrition, Gardening, & Physical Activity

Kenya Wolff & Tess Johnson
ST. FRANCISVILLE

CONCURRENT BREAKOUT SESSIONS

///// 10:00a – 11:15a

///// 2:30p – 3:45p

All New! A Million Dollar Classroom on a Dollar Store Budget

Tunga Otis
BATON ROUGE

Mooving Into Center Based Learning (DOUBLE SESSION)

Carol Bishop & Sandra Smith
NEW ORLEANS

#tech4littles: Effectively Incorporating Technology into the Early Childhood Classroom

Melissa Banks
NASHVILLE

"Making It": A Day in the Life of Infants/Toddlers (DOUBLE SESSION)

Gena Puckett & Cathy Hollingshed
GRAND HOTEL
CONFERENCE A

Let's Give Them Something to Talk About!

Jayne Jones
GRAND HOTEL
CONFERENCE B

The Influence of Communication Technology on Parent-Caregiver Relationships in Early Childhood

Stephanie Haney
GRAND HOTEL
CONFERENCE C

Understanding & Responding to Infants & Toddlers: Cues, Communication, & Temperament

Brittany Herrington
GRAND HOTEL ROSE

Talk, Read, & Sing Together Every Day! Tips for Infant & Toddler Teachers & Caregivers

Elizabeth Simmons
GRAND HOTEL CAROLINE

A Day in the Early Childhood Classroom Make-N-Take (DOUBLE SESSION)

MDE Coaches
COMMUNITY CENTER

Artistic Exploration Make-N-Take (DOUBLE SESSION)

Limeul Eubanks
COMMUNITY CENTER

Take Your Pulse on Classroom Impulse Control

Brittany Herrington
ST. LOUIS

Adverse Childhood Experiences: Views from the Caregiver, the Child, & the Impact on Education

Leslie LaVergne
MEMPHIS

Expanding OWL Vocabulary Using Current Children's Literature Titles

Elizabeth Simmons
GREENVILLE

Getting Engaged - Collaborating for Success

Mona Spells Adou
CONCORDIA

Lessons from Hollywood: Using Movies in the Classroom to Enhance Early Vocabulary Development

LeighAnne Cheeseman
VICKSBURG

Feelings Matter: Helping Children to Recognize & Express Feelings of Anger, Stress, Sadness, and Worry

Kenya Wolff & Tess Johnson
ST. FRANCISVILLE

Emergent Literacy for Preschool

Countess Thompson & Lydia Bethay
BATON ROUGE

The Influence of Communication Technology on Parent-Caregiver Relationships in Early Childhood

Stephanie Haney
NEW ORLEANS

Move to Learn - Let's MOVE to Learn!

Larry Calhoun & Dale Dieckman
NASHVILLE

"Making It": A Day in the Life of Infants/Toddlers (DOUBLE SESSION)

Gena Puckett & Cathy Hollingshed
GRAND HOTEL
CONFERENCE A

First Aid & CPR

Jay Ledbetter
GRAND HOTEL
CONFERENCE B

Become a Brain Builder: Understanding the Importance of Supporting Early Development

Lisa Long & Alicia Westbrook
GRAND HOTEL
CONFERENCE C

Early Literacy for English Learners

Sandra Elliott & Laurie Weathersby
GRAND HOTEL ROSE

Child Care Payment Program Dare to Dream Discussion

Andrea Sanders & Kristi Mchale
GRAND HOTEL CAROLINE

CONCURRENT BREAKOUT SESSIONS

///// 4:00p – 5:15p

A Day in the Early Childhood Classroom Make-N-Take (DOUBLE SESSION)

MDE Coaches
COMMUNITY CENTER

Emergent Literacy for Preschool

Countess Thompson & Lydia Bethay
BATON ROUGE

Artistic Exploration Make-N-Take (DOUBLE SESSION)

Limeul Eubanks
COMMUNITY CENTER

Attendance: The True Pathway to Becoming College and Career Ready

Toni Kersh
NEW ORLEANS

Take Your Pulse on Classroom Impulse Control

Brittany Herrington
ST. LOUIS

Move to Learn - Let's MOVE to Learn!

Larry Calhoun & Dale Dieckman
NASHVILLE

Adverse Childhood Experiences: Views from the Caregiver, the Child, & the Impact on Education

Leslie LaVergne
MEMPHIS

"Making It": A Day in the Life of Infants/Toddlers (DOUBLE SESSION)

Gena Puckett & Cathy Hollingshed
GRAND HOTEL
CONFERENCE A

Expanding OWL Vocabulary Using Current Children's Literature Titles

Elizabeth Simmons
GREENVILLE

First Aid & CPR

Jay Ledbetter
GRAND HOTEL
CONFERENCE B

Getting Engaged - Collaborating for Success

Mona Spells Adou
CONCORDIA

Language Development: Infants and Toddlers

Tamara Smith & Ornette Lee
GRAND HOTEL
CONFERENCE C

Family Ties: Empowering Families to Be Their Children's First Teacher

Melissa Readus
VICKSBURG

Silly Sidekicks

Leigh-Anne Gant
GRAND HOTEL ROSE

Finding our Zen: Yoga & Mindfulness As Social- Emotional Strategies

Kenya Wolff & Tess Johnson
ST. FRANCISVILLE

Lasting Connections with Infants and Toddlers

Elizabeth Thorne
GRAND HOTEL CAROLINE

CONCURRENT BREAKOUT SESSIONS 1

8:30a – 9:45a

A Day in the Early Childhood Classroom Make-N-Take (DOUBLE SESSION: 8:30 - 11:15a)

Participants will engage in multiple, high quality, standards based developmentally appropriate practices of learning centers found in an early childhood classroom. Participants will go on a hands-on exploration of theme-based make-n-take opportunities with a jungle and desert focus.

Adrienne Mercer, Deeda Paul, Oki Ragins, Marisa Prewitt, Sharon Erickson, Tammy Wallace, Merry Pennell, Tonya Pickens, Kathy Wall, and Sandra Watkins

COMMUNITY CENTER

Artistic Exploration Make-N-Take (DOUBLE SESSION: 8:30 - 11:15a)

Come join me on an artistic exploration! Participants will be immersed in creative, hands-on artistic explorations with a wide variety of art mediums.

Limeul Eubanks

COMMUNITY CENTER

Introduction to the K-3 CLASS Tool

During this interactive session participants will gain an understanding of CLASS, its various uses, and the teacher-student interactions that support student's learning.

Joyce Greer

ST. LOUIS

Oral Health Messages to Share with Parents

Tooth decay remains the most common childhood disease that impacts overall health and wellness. This session educates on how to share messages with parents to improve learning and growing for healthier Head Start children and families.

Carla Bassett

MEMPHIS

Making Adjustments: Meeting the Needs of Diverse Learners through Classroom Adaptations

Participants in this course will learn how to implement teaching strategies in the PreK classroom that incorporate accommodations in a variety of settings to maximize access to the general education curriculum for ALL children.

Candice Taylor

GREENVILLE

Trauma-Informed Strategies for the Early Childhood Classroom

The session is designed to increase awareness of the signs and symptoms of trauma and provide participants with a foundation in trauma-informed practices. Participants will engage in a hands-on activity that represents how trauma influences development and ultimately the early childhood classroom. The overall goal is to provide teachers with trauma-informed strategies to use in the classroom.

Lori Staton, Ph.D., Julie Parker, Ph.D., Melissa Tenhet, M.S., & Cappe Hallberg, M.S.

CONCORDIA

Child Care Payment Program Dare to Dream Discussion

The Child Care Payment Program Dare to Dream Discussion will provide a brief overview of the current state of Mississippi's program, followed by a guided discussion to help plan for the future. We ask that providers consider a "wish list" of program policies or components they would like to see added or changed, and come prepared to discuss candidly the costs and benefits of those proposed changes.

Andrea Sanders & Kristi McHale

VICKSBURG

Celebrating Difference: Standards-Based Language and Literacy Lessons that Focus on Creating Anti-bias and Bully-proof Classrooms

Children notice differences early and need to be taught appropriate ways to understand, appreciate, and negotiate it. Attend this interactive workshop and take part in several lessons about difference including a painting activity called, The Many Shades of Us! These lessons are standards-based, literacy rich and you'll want to bring them back to your classroom and celebrate the uniqueness that is in all of us!

Kenya Wolff & Tess Johnson

ST. FRANCISVILLE

All New! A Million Dollar Classroom on a Dollar Store Budget

In this new and improved workshop, the Dollar Store Diva will share a variety of DIY ideas and materials that will save you money and time. Come prepared to take lots of pictures of great items you can create for next to nothing.

Tunga Otis

BATON ROUGE

**Mooving Into Center Based Learning
(DOUBLE SESSION: 8:30 - 11:15a)**

Learning centers provide children with opportunities for making choices, working with others, being involved in hands-on activities, and becoming fully engaged in learning. Using the book *Click Clack Moo: Cows That Type*, participants will interact with center-based learning activities in the areas of Science, Math, Art, Sensory, Nutrition and Language. Correlation of the *Mississippi Department of Education Teaching Strategies* will be a part of the activities.

Carol Bishop & Sandra Smith
NEW ORLEANS

#tech4littles: Effectively Incorporating Technology into the Early Childhood Classroom

Technology can provide new learning experiences for big kids -- and littles too! In this session, participants will discover developmentally appropriate uses of technology in the classroom. We will also explore tools our littles can use to demonstrate, document, and reflect on their learning.

Melissa Banks
NASHVILLE

**"Making It": A Day in the Life of Infants/Toddlers
(DOUBLE SESSION: 8:30 - 11:15a)**

Participants will look at everyday experiences of infants and toddlers to best understand how materials can be used to help build language and motor skills. Each participant will make an item that they can carry back with them and immediately use in their infant or toddler classroom.

Gena Puckett & Cathy Hollingshed
GRAND HOTEL CONFERENCE A

My Many Colored Days: Mental Health Awareness in Early Childhood

Mental health begins in infancy and continues to develop throughout childhood. It is important for early childhood educators to understand the role they play in supporting children's mental health and overall social and emotional development. Understanding mental health in early childhood ultimately prevents expulsion and suspension during the preschool years.

Rebekah Harrington
GREENVILLE

Language Development: Infants and Toddlers

Come join us as we feed you early language development for the youngest minds. Early experiences in life affect the development of a baby's brain architecture, the foundation for all future learning, behavior, and health. Just as healthy food nourishes a baby's growing body, language nutrition nourishes a baby's brain. Quantity and quality of nourishing language, like healthy food, is critical to brain development.

Tamara Smith & Ornette Lee
GRAND HOTEL CONFERENCE C

Understanding and Responding to Infants and Toddlers: Cues, Communication, and Temperament

This session will begin by examining indicators of typical social emotional development and then will provide insight on the cues and behaviors used to communicate wants and needs (understanding). This session will end with information on temperament, giving participants an opportunity to reflect on the temperament of the children they care for as well as their own temperament (responding).

Brittany Herrington
GRAND HOTEL ROSE

Talk, Read, and Sing Together Every Day! Tips for Infant and Toddler Teachers and Caregivers

Using research from *Too Small to Fail* and *Talking is Teaching: Talk, Read, Sing* that supports providing children from birth to five with consistent, language-rich experiences -- such as talking, reading, and singing -- can have important benefits on their brain development and future school success. This type of environment is one in which babies and toddlers are surrounded by talking, singing, and reading and have many opportunities throughout their day, across all activities, to communicate with others and engage in back-and-forth interactions. A language-rich environment is important to children's early brain development, and can have strong effects on early language, vocabulary, reading, and math skills, as well as on children's social emotional development.

Elizabeth Simmons
GRAND HOTEL CAROLINE

**CONCURRENT BREAKOUT
SESSIONS 2**

10:00a - 11:15a

Storytelling as Advocacy: What You Can Do to Promote the Early Learning Collaboratives

This training will increase pre-K professionals' knowledge of and comfort with advocacy. It will explain advocacy and what pre-K professionals—including public school teachers and Head Start teachers—can legally do to promote their programs. It will also teach participants how to use effective storytelling to promote pre-K.

Rachel Canter
ST. LOUIS

Early Literacy for English Learners

The session aims to assist teachers and administrators in understanding practices to support English learners to acquire literacy skills at the Pre-K and Kindergarten levels. The session will identify early literacy skills such as alphabet knowledge, phonological awareness and print awareness and strategies for

incorporating into learning centers to benefit English learners.
Sandra Elliott & Laurie Weathersby
 MEMPHIS

My Many Colored Days: Mental Health Awareness in Early Childhood

Mental health begins in infancy and continues to develop throughout childhood. It is important for early childhood educators to understand the role they play in supporting children's mental health and overall social and emotional development. Understanding mental health in early childhood ultimately prevents expulsion and suspension during the preschool years.

Rebekah Harrington
 GREENVILLE

Trauma-Informed Strategies for the Early Childhood Classroom

The session is designed to increase awareness of the signs and symptoms of trauma and provide participants with a foundation in trauma-informed practices. Participants will engage in a hands-on activity that represents how trauma influences development and ultimately the early childhood classroom. The overall goal is to provide teachers with trauma-informed strategies to use in the classroom.

Lori Staton, Ph.D., Julie Parker, Ph.D., Melissa Tenhet, M.S., & Cappe Hallberg, M.S.
 CONCORDIA

Become a Brain Builder: Understanding the Importance of Supporting Early Development

Early childhood educators are brain builders who promote healthy development every day. Learn strategies that support early brain development, identify statewide resources, and help Mississippi Thrive! <https://mississippithrive.com/>

Alicia Westbrook & Lisa Long
 VICKSBURG

It Takes a Community for Everything to Grow! Standards-Based Strategies for Integrating Nutrition, Gardening, and Physical Activity

Research supports the notion that school curriculum, which includes healthy eating, physical activity, and body image can both improve healthy behaviors and cognition for children. While engaging in this workshop, participants will explore both the research-based benefits of including nutrition and physical activity in their classroom and experience several hands-on standards-based lessons that integrate nutrition, gardening, and physical activity. Join us in this interactive workshop and move from "How Do We Grow?," to "It Takes a Community for Everything to Grow."

Kenya Wolff & Tess Johnson
 ST. FRANCISVILLE

All New! A Million Dollar Classroom on a Dollar Store Budget

In this new and improved workshop, the Dollar Store Diva will share a variety of DIY ideas and materials that will save you money and time. Come prepared to take lots of pictures of great items you can create for next to nothing.

Tunga Otis
 BATON ROUGE

#tech4littles: Effectively Incorporating Technology into the Early Childhood Classroom

Technology can provide new learning experiences for big kids – and littles too! In this session, participants will discover developmentally appropriate uses of technology in the classroom. We will also explore tools our littles can use to demonstrate, document, and reflect on their learning.

Melissa Banks
 NASHVILLE

Let's Give Them Something to Talk About!

This training will help participants gain a better understanding of the importance of interactions, language development and having meaningful conversations with infants and toddlers. This training will ask participants to reflect on their communication practices in early childhood.

Jayme Jones
 GRAND HOTEL CONFERENCE B

The Influence of Communication Technology on Parent-Caregiver Relationships in Early Childhood

In this session, the presenter discusses how communication technology (email, texts, telephone, apps, social media) is currently being used in the early childhood classroom between parents and caregivers, and how this can impact the parent-caregiver relationship. We will analyze current research on the topic, as well as look to current and future gaps in the literature as well.

Stephanie Haney
 GRAND HOTEL CONFERENCE C

Understanding and Responding to Infants and Toddlers: Cues, Communication, and Temperament

This session will begin by examining indicators of typical social emotional development and then will provide insight on the cues and behaviors used to communicate wants and needs (understanding). This session will end with information on temperament, giving participants an opportunity to reflect on the temperament of the children they care for as well as their own temperament (responding).

Brittany Herrington
 GRAND HOTEL ROSE

Talk, Read, and Sing Together Every Day! Tips for Infant and Toddler Teachers and Caregivers

Using research from *Too Small to Fail* and *Talking is Teaching: Talk, Read, Sing* that supports providing children from birth to five with consistent, language-rich experiences – such as talking, reading, and singing – can have important benefits on their brain development and future school success. This type of environment is one in which babies and toddlers are surrounded by talking, singing, and reading and have many opportunities throughout their day, across all activities, to communicate with others and engage in back-and-forth interactions. A language-rich environment is important to children's early brain development, and can have strong effects on early language, vocabulary, reading, and math skills, as well as on children's social emotional development.

Elizabeth Simmons

GRAND HOTEL CAROLINE

CONCURRENT BREAKOUT SESSIONS 3

2:30p – 3:45p

A Day in the Early Childhood Classroom Make-N-Take (DOUBLE SESSION: 2:30 - 5:15p)

Participants will engage in multiple, high quality, standards based developmentally appropriate practices of learning centers found in an early childhood classroom. Participants will go on a hands-on exploration of theme-based make-n-take opportunities with a jungle and desert focus.

Adrienne Mercer, Deeda Paul, Oki Ragins, Marisa Prewitt, Sharon Errickson, Tammy Wallace, Merry Pennell, Tonya Pickens, Kathy Wall, and Sandra Watkins

COMMUNITY CENTER

Artistic Exploration Make-N-Take (DOUBLE SESSION: 2:30 - 5:15p)

Come join me on an artistic exploration! Participants will be immersed in creative, hands-on artistic explorations with a wide variety of art mediums.

Limeul Eubanks

COMMUNITY CENTER

Take Your Pulse on Classroom Impulse Control

This session will provide participants with an overview of executive functioning skills, the importance of developing appropriate executive functioning skills, and strategies that can be used in the classroom to help students develop executive functioning skills. These strategies can help students with ADHD, learning disabilities including dyslexia, autism, behavioral challenges, and social emotional needs. Come join us for fun games that we will use during the session to practice strategies.

Brittany Herrington

ST. LOUIS

Adverse Childhood Experiences: Views from the Caregiver, the Child, and the Impact on Education

This presentation aims to define Adverse Childhood Experiences (ACEs) from the perspective of the caregiver and child. This includes a brief overview of ACEs defined by current and leading research, as well as, the impact of ongoing toxic stress on the social, emotional, and physical wellbeing on the child and family. Furthermore, this interactive session will demonstrate the significance of the role of educators supporting children with increased stress due to ACEs and their families.

Leslie LaVergne

MEMPHIS

Expanding OWL Vocabulary using Current Children's Literature Titles

Have curriculum trade books memorized and looking for something new to read? Learn how to take a book and connect it to the curriculum's theme concepts while increasing your student's vocabulary. There are numerous new children's literature titles that will enhance *Mississippi Early Learning Standards* while introducing your students to new words and worlds.

Elizabeth Simmons

GREENVILLE

Getting Engaged – Collaborating for Success

It is a known fact that children whose parents and families are engaged in their education at an early age are more successful in school and have higher academic and behavior goals. The training focuses on strategies that promote and encourage parental and family engagement.

Mona Spells Adou

CONCORDIA

Lessons from Hollywood: Using Movies in the Classroom to Enhance Early Vocabulary Development

While not all children come to school having been exposed to texts, they most likely have watched movies and television. This session will give teachers a specific planning tool for using familiar videos and shows in the classroom to easily build and enhance their students' vocabulary.

LeighAnne Cheeseman

VICKSBURG

Feelings Matter: Helping Children to Recognize and Express Feelings of Anger, Stress, Sadness and Worry

We are all human and experience negative emotions like stress, anger, worry and sadness. Learn evidence-based practices to help young children recognize and cope with these emotions. This session will include ideas for standards-based lessons, games, songs, and center ideas that can promote healthy social-emotional development in your pre-K classroom.

Kenya Wolff & Tess Johnson

ST. FRANCISVILLE

Emergent Literacy for Preschool

It is a belief among early childhood specialists that even one and two year olds are in the process of becoming literate. In this session, we will focus on the components of a strong literacy environment and the "Big 5" within those components, and how the *Mississippi Early Learning Standards* are used in classrooms to keep literacy learning authentic, meaningful, and engaging.

Countess Thompson & Lydia Bethay

BATON ROUGE

The Influence of Communication Technology on Parent-Caregiver Relationships in Early Childhood

In this session, the presenter discusses how communication technology (email, texts, telephone, apps, social media) is currently being used in the early childhood classroom between parents and caregivers, and how this can impact the parent-caregiver relationship. We will analyze current research on the topic, as well as look to current and future gaps in the literature as well.

Stephanie Haney

NEW ORLEANS

Move to Learn – Let's MOVE to Learn!

Better grades. Better health. That's what Move to Learn is about. Studies have shown that physical activity increases children's ability to learn. Move to Learn is a free web-based resource designed to be fun for students, improve learning, increase student focus and assist teachers with classroom management.

Coach Larry Calhoun & Dale Dieckman

NASHVILLE

"Making It": A Day in the Life of Infants/Toddlers (DOUBLE SESSION: 2:30 - 5:15p)

Participants will look at everyday experiences of infants and toddlers to best understand how materials can be used to help build language and motor skills. Each participant will make an item that they can carry back with them and immediately use in their infant or toddler classroom.

Gena Puckett & Cathy Hollingshed

GRAND HOTEL CONFERENCE A

First Aid & CPR

Participants will leave this CPR and First Aid session with the knowledge, skills, experience, and confidence needed to help save a life. This session will cover CPR procedures for infants, toddlers, children, and adult. You'll learn to perform one-person CPR, CPR with rescue breaths, Hands Only CPR, how to administer CPR as part of a 2-rescuer team, and also how to administer a shock from an AED. This session will cover basic First Aid procedures.

Jay Ledbetter

GRAND HOTEL CONFERENCE B

Become a Brain Builder: Understanding the Importance of Supporting Early Development

Early childhood educators are brain builders who promote healthy development every day. Learn strategies that support early brain development, identify statewide resources, and help Mississippi Thrive! <https://mississippithrive.com/>

Alicia Westbrook & Lisa Long

GRAND HOTEL CONFERENCE C

Early Literacy for English Learners

The session aims to assist teachers and administrators in understanding practices to support English learners to acquire literacy skills at the Pre-K and Kindergarten levels. The session will identify early literacy skills such as alphabet knowledge, phonological awareness and print awareness and strategies for incorporating into learning centers to benefit English learners.

Sandra Elliott & Laurie Weathersby

GRAND HOTEL ROSE

Child Care Payment Program Dare to Dream Discussion

The Child Care Payment Program Dare to Dream Discussion will provide a brief overview of the current state of Mississippi's program, followed by a guided discussion to help plan for the future. We ask that providers consider a "wish list" of program policies or components they would like to see added or changed, and come prepared to discuss candidly the costs and benefits of those proposed changes.

Andrea Sanders & Kristi McHale

GRAND HOTEL CAROLINE

CONCURRENT BREAKOUT SESSIONS 4

4:00p – 5:15p

Take Your Pulse on Classroom Impulse Control

This session will provide participants with an overview of executive functioning skills, the importance of developing appropriate executive functioning skills, and strategies that can be used in the classroom to help students develop executive functioning skills. These strategies can help students with ADHD, learning disabilities including dyslexia, autism, behavioral challenges, and social emotional needs. Come join us for fun games that we will use during the session to practice strategies.

Brittany Herrington
ST. LOUIS

Adverse Childhood Experiences: Views from the Caregiver, the Child, and the Impact on Education

This presentation aims to define Adverse Childhood Experiences (ACEs) from the perspective of the caregiver and child. This includes a brief overview of ACEs defined by current and leading research, as well as, the impact of ongoing toxic stress on the social, emotional, and physical wellbeing on the child and family. Furthermore, this interactive session will demonstrate the significance of the role of educators supporting children with increased stress due to ACEs and their families.

Leslie LaVergne
MEMPHIS

Expanding OWL Vocabulary using Current Children's Literature Titles

Have curriculum trade books memorized and looking for something new to read? Learn how to take a book and connect it to the curriculum's theme concepts while increasing your student's vocabulary. There are numerous new children's literature titles that will enhance *Mississippi Early Learning Standards* while introducing your students to new words and worlds.

Elizabeth Simmons
GREENVILLE

Getting Engaged – Collaborating for Success

It is a known fact that children whose parents and families are engaged in their education at an early age are more successful in school and have higher academic and behavior goals. The training focuses on strategies that promote and encourage parental and family engagement.

Mona Spells Adou
CONCORDIA

Family Ties: Empowering Families to be Their Children's First Teacher

The main objective of this presentation is to engage Early Childhood Professionals and Early Childhood Administrators in an interactive professional development learning session centered around equipping families with the tools necessary to enhance their capacity of supporting School Readiness in the homes of the families and children they serve.

Melissa Readus
VICKSBURG

Finding our Zen: Yoga & Mindfulness as Social-Emotional Strategies

Yoga and mindfulness programs have been proven to benefit young children emotionally, cognitively, physically, and behaviorally. Come learn strategies to take your classroom from chaos to calm by using yoga and mindfulness in this interactive session.

Kenya Wolff & Tess Johnson
ST. FRANCISVILLE

Emergent Literacy for Preschool

It is a belief among early childhood specialists that even one and two year olds are in the process of becoming literate. In this session, we will focus on the components of a strong literacy environment and the "Big 5" within those components, and how the *Mississippi Early Learning Standards* are used in classrooms to keep literacy learning authentic, meaningful, and engaging.

Countess Thompson & Lydia Bethay
BATON ROUGE

Attendance: The True Pathway to Becoming College and Career Ready

It is essential for students to learn early that attending school regularly is important for students to gain the academic and social skills they need to succeed. Teaching students and families the importance of attending school is one of the primary strategies for improving academic performance. Starting as early as preschool and kindergarten, students who are chronically absent, missing 10% of the school year, can leave third graders unable to read proficiently, sixth graders struggling with coursework and high school students off track for graduation.

Toni Kersh
NEW ORLEANS

Move to Learn – Let's MOVE to Learn!

Better grades. Better health. That's what Move to Learn is about. Studies have shown that physical activity increases children's ability to learn. Move to Learn is a free web-based resource designed to be fun for students, improve learning, increase student focus and assist teachers with classroom management.

Coach Larry Calhoun & Dale Dieckman

NASHVILLE

First Aid & CPR

Participants will leave this CPR and First Aid session with the knowledge, skills, experience, and confidence needed to help save a life. This session will cover CPR procedures for infants, toddlers, children, and adult. You'll learn to perform one-person CPR, CPR with rescue breaths, Hands Only CPR, how to administer CPR as part of a 2-rescuer team, and also how to administer a shock from an AED. This session will cover basic First Aid procedures.

Jay Ledbetter

GRAND HOTEL CONFERENCE B

Language Development: Infants and Toddlers

Come join us as we feed you early language development for the youngest minds. Early experiences in life affect the development of a baby's brain architecture, the foundation for all future learning, behavior, and health. Just as healthy food nourishes a baby's growing body, language nutrition nourishes a baby's brain. Quantity and quality of nourishing language, like healthy food, is critical to brain development.

Tamara Smith & Ornette Lee

GRAND HOTEL CONFERENCE C

Silly Sidekicks

Want something in your classroom that will help your children gain fine motor development, feeding skills and more? Come and make a silly sidekick that will have your children squeezing their way to new skills.

Leigh-Anne Gant

GRAND HOTEL ROSE

Lasting Connections for Infants and Toddlers

This training seeks to inform infant and toddler caregivers of the importance of social and emotional development during the first three years of life. Participants will learn how to facilitate healthy social and emotional skills for infants and toddlers as well as activities that help foster social and emotional development that align with the *Mississippi Early Learning Standards*.

Elizabeth Thorne

GRAND HOTEL CAROLINE

AGENDA

/// JULY 24 ///

7:00a – 2:00p	Registration
8:30a – 9:45a	Concurrent Breakout Sessions 1 NATCHEZ CONVENTION CENTER, GRAND HOTEL, & COMMUNITY CENTER
9:45a – 10:00a	Break
10:00a – 11:15a	Concurrent Breakout Sessions 2 NATCHEZ CONVENTION CENTER, GRAND HOTEL, & COMMUNITY CENTER
11:15a – 1:00p	Lunch on your own
1:00p – 2:15p	Keynote Speaker // // // // <i>Susan Buttross, M.D., FAAP</i> NASHVILLE Welcome, Introduction, and Remarks // // // // <i>Dr. Jill Dent</i>
2:15p – 2:30p	Break
2:30p – 3:45p	Concurrent Breakout Sessions 3 NATCHEZ CONVENTION CENTER, GRAND HOTEL, & COMMUNITY CENTER
3:45p – 4:00p	Break
4:00p – 5:15p	Concurrent Breakout Sessions 4 NATCHEZ CONVENTION CENTER, GRAND HOTEL, & COMMUNITY CENTER
5:30p – 7:30p	Taste of Natchez NATCHEZ CONVENTION CENTER

KEYNOTE SPEAKER

Dr. Susan Buttross is a Professor of Pediatrics at the University of Mississippi Medical Center (UMMC). She served as Division Chief of Child Development and Behavioral Pediatrics for 26 years and is presently the Medical Director for the Center for Advancement of Youth. She earned her medical degree from the University of Mississippi School of Medicine and completed her pediatric residency at the University of Mississippi Medical Center and the University of Texas Medical Branch in Galveston, Texas. Additional post residency study was completed at the University of Tennessee Boling Center for Developmental Disabilities.

Dr. Buttross is a Fellow of the American Academy of Pediatrics (AAP) and is board certified in Pediatrics and Developmental and Behavioral Pediatrics. She has been the recipient of several awards including the AAP Special Achievement Award, Best Doctors in America for the last eight years, the TEAAM Presidential Citation for Exceptional Service, the Torch Bearer Award from the Coalition of Citizens with Developmental Disabilities and UMMC's 2018 Gold Medallion for Excellence in Research and has recently been chosen Doctor of the Year for 2019 by the Mississippi Chapter of the National Alliance for Mental Illness (NAMI).

Dr. Buttross has held offices for the State and National AAP and presently serves as a national spokesperson for the Academy. For the last six years, she has been the host of Mississippi Public Radio's Tuesday edition of Southern Remedy, "Relatively Speaking". She has authored numerous publications and the book, *Understanding Attention Deficit Hyperactivity Disorder*.

Dr. Buttross has been the recipient of several grants to study sleep, Autism, tobacco, Speech/Language Disorders, ADHD and Fetal Alcohol Spectrum Disorders. Presently, she is the principal investigator at UMMC for a Health Resource Services Administration three-year grant, The Child Health and Development Project.

Married to Robert Riddell, she and her husband are the proud parents of 5 children and 10 grandchildren with an 11th on the way! She loves to paint, garden and travel.



DR. SUSAN BUTTROSS

CONCURRENT BREAKOUT SESSIONS

///// 8:30a – 9:45a

A Day in the Early Childhood Classroom Make-N-Take (DOUBLE SESSION)

MDE Coaches
COMMUNITY CENTER

Integrated Lesson Planning

*Joyce Greer, Lydia Boutwell,
& Dawn Jones*
BATON ROUGE

Artistic Exploration Make-N-Take (DOUBLE SESSION)

Limeul Eubanks
COMMUNITY CENTER

Mooving Into Center Based Learning (DOUBLE SESSION)

Carol Bishop & Sandra Smith
NEW ORLEANS

First Aid & CPR

Jay Ledbetter
ST. LOUIS

Exploring OWL

Laura Butler
NASHVILLE

Follow the Leader: Enhancing Culture & Climate with Effective Leadership Skills

Micca Knox
MEMPHIS

“Making It”: A Day in the Life of Infants/Toddlers (DOUBLE SESSION)

Gena Puckett & Cathy Hollingshed
GRAND HOTEL
CONFERENCE A

Connecting with Families

Julie Norman
GREENVILLE

Let’s Give Them Something to Talk About

Jayme Jones
GRAND HOTEL
CONFERENCE B

Pre-K CLASS Introduction (ALL DAY SESSION)

Elizabeth Stone & Amye Hoskins
CONCORDIA

Language in Infant and Toddler Communities: Tools to Support Language Development & Vocabulary Enrichment in Children from Birth to Three

Karyn Jankowski
GRAND HOTEL
CONFERENCE C

Making Adjustments: Meeting the Needs of Diverse Learners through Classroom Adaptations

Candice Taylor
VICKSBURG

Mississippi Family Engagement Framework & Toolkit Launch

Angela Towers & Amanda Adams
GRAND HOTEL ROSE

Celebrating Differences: Standards-Based Language & Literacy Lessons That Focus on Creating Anti-Bias & Bully-Proof Classrooms

Kenya Wolff & Tess Johnson
ST. FRANCISVILLE

Lasting Connections with Infants and Toddlers

Elizabeth Thorne
GRAND HOTEL CAROLINE

CONCURRENT BREAKOUT SESSIONS

A Day in the Early Childhood Classroom Make-N-Take (DOUBLE SESSION)

MDE Coaches
COMMUNITY CENTER

Artistic Exploration Make-N-Take (DOUBLE SESSION)

Limeul Eubanks
COMMUNITY CENTER

First Aid & CPR

Jay Ledbetter
ST. LOUIS

Follow the Leader: Enhancing Culture & Climate with Effective Leadership Skills

Micca Knox
MEMPHIS

Connecting with Families

Julie Norman
GREENVILLE

Pre-K CLASS Introduction (ALL DAY SESSION)

Elizabeth Stone & Amye Hoskins
CONCORDIA

Mississippi Family Engagement Framework & Toolkit Launch

Angela Towers & Amanda Adams
VICKSBURG

It Takes a Community for Everything to Grow! Standards-Based Strategies for Integrating Nutrition, Gardening, & Physical Activity

Kenya Wolff & Tess Johnson
ST. FRANCISVILLE

CONCURRENT BREAKOUT SESSIONS

///// 10:00a – 11:15a

Serve & Return: How to Build Young Children's Brains by Using Serve & Return Interactions

Lisa Long & Callie Poole

BATON ROUGE

Mooving Into Center Based Learning (DOUBLE SESSION)

Carol Bishop & Sandra Smith

NEW ORLEANS

Exploring OWL

Laura Butler

NASHVILLE

"Making It": A Day in the Life of Infants/Toddlers (DOUBLE SESSION)

Gena Puckett & Cathy Hollingshed

GRAND HOTEL
CONFERENCE A

Behavior Has Meaning: Understanding & Responding to Challenging Behaviors in Children Birth to 5

Laura Smith

GRAND HOTEL
CONFERENCE B

Language in Infant and Toddler Communities: Tools to Support Language Development & Vocabulary Enrichment in Children from Birth to Three

Karyn Jankowski

GRAND HOTEL
CONFERENCE C

Child Care Systematic Approach to a Plan of Correction

*Tabitha Bynum, Marlinda Beck-Lee,
Wade Daughdrill, & Chriscella Clay*

GRAND HOTEL ROSE

Care for the Caregiver: It's All About You!!

Pam Myrick-Mottley

GRAND HOTEL CAROLINE

A Day in the Early Childhood Classroom Make-N-Take (DOUBLE SESSION)

MDE Coaches

COMMUNITY CENTER

Artistic Exploration Make-N-Take (DOUBLE SESSION)

Limeul Eubanks

COMMUNITY CENTER

Moving into Math

LaRicky Harris, Emerld Boll &

Micheal Mozee

ST. LOUIS

Child Care Systematic Approach to a Plan of Correction

*Tabitha Bynum, Marlinda Beck-Lee,
Wade Daughdrill, & Chriscella Clay*

MEMPHIS

Conflict Resolution in the Workplace

Tammy Rutland & Jenny Kern

GREENVILLE

Pre-K CLASS Introduction (ALL DAY SESSION)

Elizabeth Stone & Amye Hoskins

CONCORDIA

Behavior Has Meaning: Understanding & Responding to Challenging Behaviors in Children Birth to 5

Laura Smith

VICKSBURG

Feelings Matter: Helping Children to Recognize & Express Feelings of Anger, Stress, Sadness, and Worry

Kenya Wolff & Tess Johnson

ST. FRANCISVILLE

Care for the Caregiver: It's All About You!!

Pam Myrick-Mottley

BATON ROUGE

Importance of Writing with Young Children

Anne Marie Ross &

Savannah McClain

NEW ORLEANS

"Making It": A Day in the Life of Infants/Toddlers (DOUBLE SESSION)

Gena Puckett & Cathy Hollingshed

GRAND HOTEL
CONFERENCE A

Serve & Return: How to Build Young Children's Brains by Using Serve & Return Interactions

Lisa Long & Callie Poole

GRAND HOTEL
CONFERENCE B

Infant Safe Sleep: Role of Caregivers

Monica Stinson

GRAND HOTEL
CONFERENCE C

First Aid & CPR

Jay Ledbetter

GRAND HOTEL ROSE

Communicating Effectively Through Creative Activities

Josenda Dockery

GRAND HOTEL CAROLINE

CONCURRENT BREAKOUT SESSIONS // 4:00p – 5:15p

A Day in the Early Childhood Classroom Make-N-Take (DOUBLE SESSION)

MDE Coaches
COMMUNITY CENTER

Integrated Lesson Planning

*Joyce Greer, Lydia Boutwell,
& Dawn Jones*
BATON ROUGE

Artistic Exploration Make-N-Take (DOUBLE SESSION)

Limeul Eubanks
COMMUNITY CENTER

Importance of Writing with Young Children

*Anne Marie Ross &
Savannah McClain*
NEW ORLEANS

Moving into Math

*LaRicky Harris, Emerld Boll &
Micheal Mozee*
ST. LOUIS

Silly Sidekicks

Leigh-Anne Gant
NASHVILLE

Let Language Do the Talking

Jayme Jones
MEMPHIS

"Making It": A Day in the Life of Infants/Toddlers (DOUBLE SESSION)

Gena Puckett & Cathy Hollingshed
GRAND HOTEL
CONFERENCE A

Conflict Resolution in the Workplace

Tammy Rutland & Jenny Kern
GREENVILLE

Mandatory Reporting - Suspected Child Abuse/Neglect

Anne M. Nelson
GRAND HOTEL
CONFERENCE B

Pre-K CLASS Introduction (ALL DAY SESSION)

Elizabeth Stone & Amye Hoskins
CONCORDIA

Infant Safe Sleep: Role of Caregivers

Monica Stinson
GRAND HOTEL
CONFERENCE C

Mississippi Family Engagement Framework & Toolkit Launch

Angela Towers & Amanda Adams
VICKSBURG

First Aid & CPR

Jay Ledbetter
GRAND HOTEL ROSE

Finding our Zen: Yoga & Mindfulness As Social- Emotional Strategies

Kenya Wolff & Tess Johnson
ST. FRANCISVILLE

Communicating Effectively Through Creative Activities

Josenda Dockery
GRAND HOTEL CAROLINE

CONCURRENT BREAKOUT SESSIONS 1

8:30a – 9:45a

A Day in the Early Childhood Classroom Make-N-Take (DOUBLE SESSION: 8:30 - 11:15a)

Participants will engage in multiple, high quality, standards based developmentally appropriate practices of learning centers found in an early childhood classroom. Participants will go on a hands-on exploration of theme-based make-n-take opportunities with a jungle and desert focus.

Adrienne Mercer, Deeda Paul, Oki Ragins, Marisa Prewitt, Sharon Errickson, Tammy Wallace, Merry Pennell, Tonya Pickens, Kathy Wall, and Sandra Watkins
COMMUNITY CENTER

Artistic Exploration Make-N-Take (DOUBLE SESSION: 8:30 - 11:15a)

Come join me on an artistic exploration! Participants will be immersed in creative, hands-on artistic explorations with a wide variety of art mediums.

Limeul Eubanks
COMMUNITY CENTER

First Aid & CPR

Participants will leave this CPR and First Aid session with the knowledge, skills, experience, and confidence needed to help save a life. This session will cover CPR procedures for infants, toddlers, children, and adults. You'll learn to perform one-person CPR, CPR with rescue breaths, Hands Only CPR, how to administer CPR as part of a 2-rescuer team, and also how to administer a shock from an AED. This session will cover basic First Aid procedures.

Jay Ledbetter
ST. LOUIS

Follow the Leader: Enhancing Culture and Climate with Effective Leadership Skills

During this session, participants will learn about different styles of leadership and identify the leadership style that fits them. Participants will also learn about culture and climate and how this affects the environment of the classroom setting. Participants will be provided with tips on how to enhance their leadership skills and practical ways to improve relationships with children, families, and staff.

Micca Knox
MEMPHIS

Connecting with Families

We know that parents are their child's first and most important teachers, and they set the tone for lifelong learning. Family involvement in children's education is closely linked to

children's educational growth and achievement. When early childhood educators are intentional about fostering positive relationships with the child's family, it is a win-win for all. We all know relationships are crucial to optimum learning. As early childhood educators, you have a unique responsibility and privilege to share in the child's educational journey as you encourage families to nurture their child's early academic development and growth.

Julie Norman
GREENVILLE

Pre-K CLASS Introduction (ALL DAY SESSION: 8:30a - 5:15p)

This session will provide an overview of the Classroom Assessment Scoring System™ (CLASS™), a research-based tool for observing interactions that take place in classroom settings. We will look at the connections between effective teacher interactions and children's learning. Teachstone's mission is to transform education by applying what works (research-based tools to help teachers and programs/centers learn about, measure, and improve teacher-child interactions) to what matters (children's socio-emotional development and learning).

Elizabeth Stone & Amye Hoskins
CONCORDIA

Making Adjustments: Meeting the Needs of Diverse Learners through Classroom Adaptations

Participants in this course will learn how to implement teaching strategies in the PreK classroom that incorporate accommodations in a variety of settings to maximize access to the general education curriculum for ALL children.

Candice Taylor
VICKSBURG

Celebrating Differences: Standards-Based Language and Literacy Lessons that Focus on Creating Anti-bias and Bully-proof Classrooms

Children notice differences early and need to be taught appropriate ways to understand, appreciate, and negotiate it. Attend this interactive workshop and take part in several lessons about difference including a painting activity called, The Many Shades of Us! These lessons are standards-based, literacy rich and you'll want to bring them back to your classroom and celebrate the uniqueness that is in all of us!

Kenya Wolff & Tess Johnson
ST. FRANCISVILLE

Integrated Lesson Planning

Integrated Lesson Planning will provide support to teachers, assistant teachers, child-care providers and administrators in thinking differently about the way they approach lesson planning in the early childhood classroom.

Joyce Greer, Lydia Boutwell, & Dawn Jones
BATON ROUGE

Mooving Into Center Based Learning

Learning centers provide children with opportunities for making choices, working with others, being involved in hands-on activities, and becoming fully engaged in learning. Using the book *Click Clack Moo: Cows That Type*, participants will interact with center-based learning activities in the areas of Science, Math, Art, Sensory, Nutrition and Language. Correlation of the *Mississippi Department of Education Teaching Strategies* will be a part of the activities.

Carol Bishop & Sandra Smith
NEW ORLEANS

Exploring OWL

Explore the components of the Opening the World of Learning (OWL) instructional program, with emphasis on the philosophy, daily schedule, classroom routine, assessment, and family connection. Participants explore the daily schedule of activities while learning the research behind the practice. This hands-on, interactive workshop prepares educators to use OWL materials and components.

Laura Butler
NASHVILLE

"Making It": A Day in the Life of Infants/Toddlers (DOUBLE SESSION: 8:30 - 11:15a)

Participants will look at everyday experiences of infants and toddlers to best understand how materials can be used to help build language and motor skills. Each participant will make an item that they can carry back with them and immediately use in their infant or toddler classroom.

Gena Puckett & Cathy Hollingshed
GRAND HOTEL CONFERENCE A

Let's Give Them Something to Talk About!

This training will help participants gain a better understanding of the importance of interactions, language development and having meaningful conversations with infants and toddlers. This training will ask participants to reflect on their communication practices in early childhood.

Jayme Jones
GRAND HOTEL CONFERENCE B

Language in Infant and Toddler Communities: Tools to Support Language Development and Vocabulary Enrichment in Children from Birth to Three

The aptitude for language development is strongest in the first six years of life. In the first three years, this is the acquisition of spoken language as the child builds his vocabulary, acquires the rhythms and intonations of the language around him and learns to communicate verbally. In this session, we will discuss ways to capitalize on this opportunity with specific materials, activities, strategies, and other resources to create an optimal, rich environment to support the development of language in children ages birth to three.

Karyn Jankowski
GRAND HOTEL CONFERENCE C

Mississippi Family Engagement Framework & Toolkit Launch

This is the exciting and long anticipated launch of the Mississippi Family Engagement Framework and Toolkit! This effort has been developed over a two-year period as a collaborative partnership of the Mississippi Department of Education (MDE) Office of Early Childhood, Office of Federal Programs, Office of Intervention Services, Office of Special Education, and both internal and external stakeholder groups. The MDE Family Engagement Framework and Toolkit provides guidance, outcomes, strategies, activities, and resources to implement the family engagement goals identified in the Framework. Participants will learn about family engagement coaching and leadership opportunities and upcoming family engagement events across the state.

Angela Towers & Amanda Adams
GRAND HOTEL ROSE

Lasting Connections with Infants and Toddlers

This training seeks to inform infant and toddler caregivers of the importance of social and emotional development during the first three years of life. Participants will learn how to facilitate healthy social and emotional skills for infants and toddlers as well as activities that help foster social and emotional development that align with the *Mississippi Early Learning Standards*.

Elizabeth Thorne
GRAND HOTEL CAROLINE

CONCURRENT BREAKOUT SESSIONS 2

10:00a – 11:15a

First Aid & CPR

Participants will leave this CPR and First Aid session with the knowledge, skills, experience, and confidence needed to help save a life. This session will cover CPR procedures for infants, toddlers, children, and adults. You'll learn to perform one-person CPR, CPR with rescue breaths, Hands Only CPR, how to administer CPR as part of a 2-rescuer team, and also how to administer a shock from an AED. This session will cover basic First Aid procedures.

Jay Ledbetter

ST. LOUIS

Follow the Leader: Enhancing Culture and Climate with Effective Leadership Skills

During this session, participants will learn about different styles of leadership and identify the leadership style that fits them. Participants will also learn about culture and climate and how this affects the environment of the classroom setting. Participants will be provided with tips on how to enhance their leadership skills and practical ways to improve relationships with children, families, and staff.

Micca Knox

MEMPHIS

Connecting with Families

We know that parents are their child's first and most important teachers, and they set the tone for lifelong learning. Family involvement in children's education is closely linked to children's educational growth and achievement. When early childhood educators are intentional about fostering positive relationships with the child's family, it is a win-win for all. We all know relationships are crucial to optimum learning. As early childhood educators, you have a unique responsibility and privilege to share in the child's educational journey as you encourage families to nurture their child's early academic development and growth.

Julie Norman

GREENVILLE

Mississippi Family Engagement Framework & Toolkit Launch

This is the exciting and long anticipated launch of the Mississippi Family Engagement Framework and Toolkit! This effort has been developed over a two-year period as a collaborative partnership of the Mississippi Department of Education (MDE) Office of Early Childhood, Office of Federal Programs, Office of Intervention Services, Office of Special Education, and both internal and external stakeholder groups.

The MDE Family Engagement Framework and Toolkit provides guidance, outcomes, strategies, activities, and resources to implement the family engagement goals identified in the Framework. Participants will learn about family engagement coaching and leadership opportunities and upcoming family engagement events across the state.

Angela Towers & Amanda Adams

VICKSBURG

It Takes a Community for Everything to Grow! Standards-Based Strategies for Integrating Nutrition, Gardening, and Physical Activity

Research supports the notion that school curriculum, which includes healthy eating, physical activity, and body image can both improve healthy behaviors and cognition for children. While engaging in this workshop, participants will explore both the research-based benefits of including nutrition and physical activity in their classroom and experience several hands-on standards-based lessons that integrate nutrition, gardening, and physical activity. Join us in this interactive workshop and move from "How Do We Grow?" to "It Takes a Community for Everything to Grow."

Kenya Wolff & Tess Johnson

ST. FRANCISVILLE

Serve & Return: How to Build Young Children's Brains by Using Serve & Return Interactions

Early childhood educators are brain builders who promote healthy development every day. Learn specific strategies for engaging in Serve and Return interactions with young children—essential for supporting brain architecture—and help Mississippi Thrive! <https://mississippithrive.com/>

Lisa Long & Callie Poole

BATON ROUGE

Exploring OWL

Explore the components of the Opening the World of Learning (OWL) instructional program, with emphasis on the philosophy, daily schedule, classroom routine, assessment, and family connection. Participants explore the daily schedule of activities while learning the research behind the practice. This hands-on, interactive workshop prepares educators to use OWL materials and components.

Laura Butler

NASHVILLE

Behavior Has Meaning: Understanding & Responding to Challenging Behaviors in Children Birth to 5

This Infants are telling us something when they cannot be consoled; toddlers are speaking to us too when they cannot resolve tantrums. This session will teach the meaning behind some of the difficult behaviors early care teachers face in the classroom. It will also provide guidance on ways to respond to the behavior as well as to the underlying message.

Laura Smith

GRAND HOTEL CONFERENCE B

Language in Infant and Toddler Communities: Tools to Support Language Development and Vocabulary Enrichment in Children from Birth to Three

The aptitude for language development is strongest in the first six years of life. In the first three years, this is the acquisition of spoken language as the child builds his vocabulary, acquires the rhythms and intonations of the language around him and learns to communicate verbally. In this session, we will discuss ways to capitalize on this opportunity with specific materials, activities, strategies, and other resources to create an optimal, rich environment to support the development of language in children ages birth to three.

Karyn Jankowski

GRAND HOTEL CONFERENCE C

Child Care Systematic Approach to a Plan of Correction

This session will focus on educating owner/administrators, directors, and teachers in developing logical and efficient plans to promote compliance with MSDH Child Care Regulations. Participants will get a more in depth understanding of Child Care Regulations pertaining to room capacity, staff-to-child ratio, mixing age groups, as well as other regulations. The session will utilize visual presentation, interactive question/answer periods, and role play opportunities.

Tabitha Bynum, Marlinda Beck-Lee, Wade Daughdrill, & Chriscella Clay

GRAND HOTEL ROSE

Care for the Caregiver: It's All About You!!

The escalating crisis of teacher/caregiver stress is negatively affecting the learning outcomes for children of all ages. This presentation offers strategies teachers/caregivers can utilize to combat the stress of balancing work and life, and engages participants in stress relieving activities.

Pam Myrick-Mottley

GRAND HOTEL CAROLINE

CONCURRENT BREAKOUT SESSIONS 3

2:30p – 3:45p

A Day in the Early Childhood Classroom Make-N-Take (DOUBLE SESSION: 2:30 - 5:15p)

Participants will engage in multiple, high quality, standards based developmentally appropriate practices of learning centers found in an early childhood classroom. Participants will go on a hands-on exploration of theme-based make-n-take opportunities with a jungle and desert focus.

Adrienne Mercer, Deeda Paul, Oki Ragins, Marisa Prewitt, Sharon Errickson, Tammy Wallace, Merry Pennell, Tonya Pickens, Kathy Wall, and Sandra Watkins

COMMUNITY CENTER

Artistic Exploration Make-N-Take (DOUBLE SESSION: 2:30 - 5:15p)

Come join me on an artistic exploration! Participants will be immersed in creative, hands-on artistic explorations with a wide variety of art mediums.

Limeul Eubanks

COMMUNITY CENTER

Moving into Math

Math enhances student's analytical skills while making learning more interesting and fun. The purpose of this presentation is to provide teachers with evidence-based strategies that align to the *Mississippi Early Learning Mathematic Standards* for pre-kindergarten.

LaRicky Harris, Emerld Bolts, & Michael T. Moze

ST. LOUIS

Child Care Systematic Approach to a Plan of Correction

This session will focus on educating owner/administrators, directors, and teachers in developing logical and efficient plans to promote compliance with MSDH Child Care Regulations. Participants will get a more in depth understanding of Child Care Regulations pertaining to room capacity, staff-to-child ratio, mixing age groups, as well as other regulations. The session will utilize visual presentation, interactive question/answer periods, and role play opportunities.

Tabitha Bynum, Marlinda Beck-Lee, Wade Daughdrill, & Chriscella Clay

MEMPHIS

Conflict Resolution in the Workplace

During this session participants will learn the key steps to conflict resolution utilizing a hands-on learning approach. Participants will hear examples and will share their own experiences. In conclusion, role play demonstrations will articulate the principles learned.

Tammy Rutland & Jenny Kern

GREENVILLE

Behavior Has Meaning: Understanding & Responding to Challenging Behaviors in Children Birth to 5

Infants are telling us something when they cannot be consoled; toddlers are speaking to us too when they cannot resolve tantrums. This session will teach the meaning behind some of the difficult behaviors early care teachers face in the classroom. It will also provide guidance on ways to respond to the behavior as well as to the underlying message.

Laura Smith
VICKSBURG

Feelings Matter: Helping Children to Recognize and Express Feelings of Anger, Stress, Sadness and Worry

We are all human and experience negative emotions like stress, anger, worry and sadness. Learn evidence-based practices to help young children recognize and cope with these emotions. This session will include ideas for standards-based lessons, games, songs, and center ideas that can promote healthy social-emotional development in your pre-K classroom.

Kenya Wolff & Tess Johnson
ST. FRANCISVILLE

Care for the Caregiver: It's All About You!!

The escalating crisis of teacher/caregiver stress is negatively affecting the learning outcomes for children of all ages. This presentation offers strategies teachers/caregivers can utilize to combat the stress of balancing work and life and engages participants in stress relieving activities.

Pam Myrick-Mottley
BATON ROUGE

Importance of Writing with Young Children

Emergent writing is developed in the preschool classroom. We will discuss the importance of preschool writing development and share ideas that will encourage preschool writers.

Anne Marie Ross & Savannah McClain
NEW ORLEANS

"Making It": A Day in the Life of Infants/Toddlers (DOUBLE SESSION: 2:30 - 5:15p)

Participants will look at everyday experiences of infants and toddlers to best understand how materials can be used to help build language and motor skills. Each participant will make an item that they can carry back with them and immediately use in their infant or toddler classroom.

Gena Puckett & Cathy Hollingshed
GRAND HOTEL CONFERENCE A

Serve & Return: How to Build Young Children's Brains by Using Serve & Return Interactions

Early childhood educators are brain builders who promote healthy development every day. Learn specific strategies for engaging in Serve and Return interactions with young children—essential for supporting brain architecture—and help Mississippi Thrive! <https://mississippithrive.com/>

Lisa Long & Callie Poole
GRAND HOTEL CONFERENCE B

Infant Safe Sleep: Role of Caregivers

Caregivers, including parents and licensed facilities play a major role in ensuring safe sleep for infants and reducing the risk of Sudden Infant Death Syndrome (SIDS) and Sudden Unexpected Infant Death (SUID). This presentation will provide information on proper ways to put babies to sleep and the role caregivers play. The presentation will also provide a brief overview of Child Care Regulations in Mississippi for infant safe sleep.

Monica Stinson
GRAND HOTEL CONFERENCE C

First Aid & CPR

Participants will leave this CPR and First Aid session with the knowledge, skills, experience, and confidence needed to help save a life. This session will cover CPR procedures for infants, toddlers, children, and adults. You'll learn to perform one-person CPR, CPR with rescue breaths, Hands Only CPR, how to administer CPR as part of a 2-rescuer team, and also how to administer a shock from an AED. This session will cover basic First Aid procedures.

Jay Ledbetter
GRAND HOTEL ROSE

Communicating Effectively Through Creative Activities

The goal of the session is to help teachers and teacher assistants in communicating effectively with infants and toddlers through creative activities. Infants' and toddlers' activities will be divided into 5 broad areas: social awareness, language and communication skills, cognitive development, sensory motor skills, and creative development.

Josenda Dockery
GRAND HOTEL CAROLINE

CONCURRENT BREAKOUT SESSIONS 4

4:00p – 5:15p

Moving into Math

Math enhances student's analytical skills while making learning more interesting and fun. The purpose of this presentation is to provide teachers with evidence-based strategies that align to the *Mississippi Early Learning Mathematic Standards* for pre-kindergarten.

LaRicky Harris, Emerld Bolls, & Michael T. Moze

ST. LOUIS

Let Language Do the Talking!

This training will help participants gain a better understanding of the importance of interactions, language development and having meaningful conversations with pre-k children. This training will ask participants to reflect on their communication practices in early childhood and practice better language modeling skills.

Jayme Jones

MEMPHIS

Conflict Resolution in the Workplace

During this session participants will learn the key steps to conflict resolution utilizing a hands-on learning approach. Participants will hear examples and will share their own experiences. In conclusion, role play demonstrations will articulate the principles learned.

Tammy Rutland & Jenny Kern

GREENVILLE

Mississippi Family Engagement Framework & Toolkit Launch

This is the exciting and long anticipated launch of the Mississippi Family Engagement Framework and Toolkit! This effort has been developed over a two-year period as a collaborative partnership of the Mississippi Department of Education (MDE) Office of Early Childhood, Office of Federal Programs, Office of Intervention Services, Office of Special Education, and both internal and external stakeholder groups. The MDE Family Engagement Framework and Toolkit provides guidance, outcomes, strategies, activities, and resources to implement the family engagement goals identified in the Framework. Participants will learn about family engagement coaching and leadership opportunities and upcoming family engagement events across the state.

Angela Towers & Amanda Adams

VICKSBURG

Finding our Zen: Using Yoga & Mindfulness as Social-Emotional Strategies

Yoga and mindfulness programs have been proven to benefit young children emotionally, cognitively, physically, and behaviorally. Come learn strategies to take your classroom from chaos to calm by using yoga and mindfulness in this interactive session.

Kenya Wolff & Tess Johnson

ST. FRANCISVILLE

Integrated Lesson Planning

Integrated Lesson Planning will provide support to teachers, assistant teachers, child-care providers and administrators in thinking differently about the way they approach lesson planning in the early childhood classroom.

Joyce Greer, Lydia Boutwell, & Dawn Jones

BATON ROUGE

Importance of Writing with Young Children

Emergent writing is developed in the preschool classroom. We will discuss the importance of preschool writing development and share ideas that will encourage preschool writers.

Anne Marie Ross & Savannah McClain

NEW ORLEANS

Silly Sidekicks

Want something in your classroom that will help your children gain fine motor development, feeding skills and more? Come and make a silly sidekick that will have your children squeezing their way to new skills.

Leigh-Anne Gant

NASHVILLE

Mandatory Reporting- Suspected Child Abuse/Neglect

This is an overview on abuse/neglect by providing information on what to observe in possible abuse/neglect cases. Discussion on mandatory reporting, who is required to report, what reporting looks like and what all information is necessary as well as different avenues to assist with reporting.

Anne M. Nelson

GRAND HOTEL CONFERENCE B

Infant Safe Sleep: Role of Caregivers

Caregivers, including parents and licensed facilities play a major role in ensuring safe sleep for infants and reducing the risk of Sudden Infant Death Syndrome (SIDS) and Sudden Unexpected Infant Death (SUID). This presentation will provide information on proper ways to put babies to sleep and the role caregivers play. The presentation will also provide a brief overview of Child Care Regulations in Mississippi for infant safe sleep.

Monica Stinson

GRAND HOTEL CONFERENCE C

First Aid & CPR

Participants will leave this CPR and First Aid session with the knowledge, skills, experience, and confidence needed to help save a life. This session will cover CPR procedures for infants, toddlers, children, and adults. You'll learn to perform one-person CPR, CPR with rescue breaths, Hands Only CPR, how to administer CPR as part of a 2-rescuer team, and also how to administer a shock from an AED. This session will cover basic First Aid procedures.

Jay Ledbetter

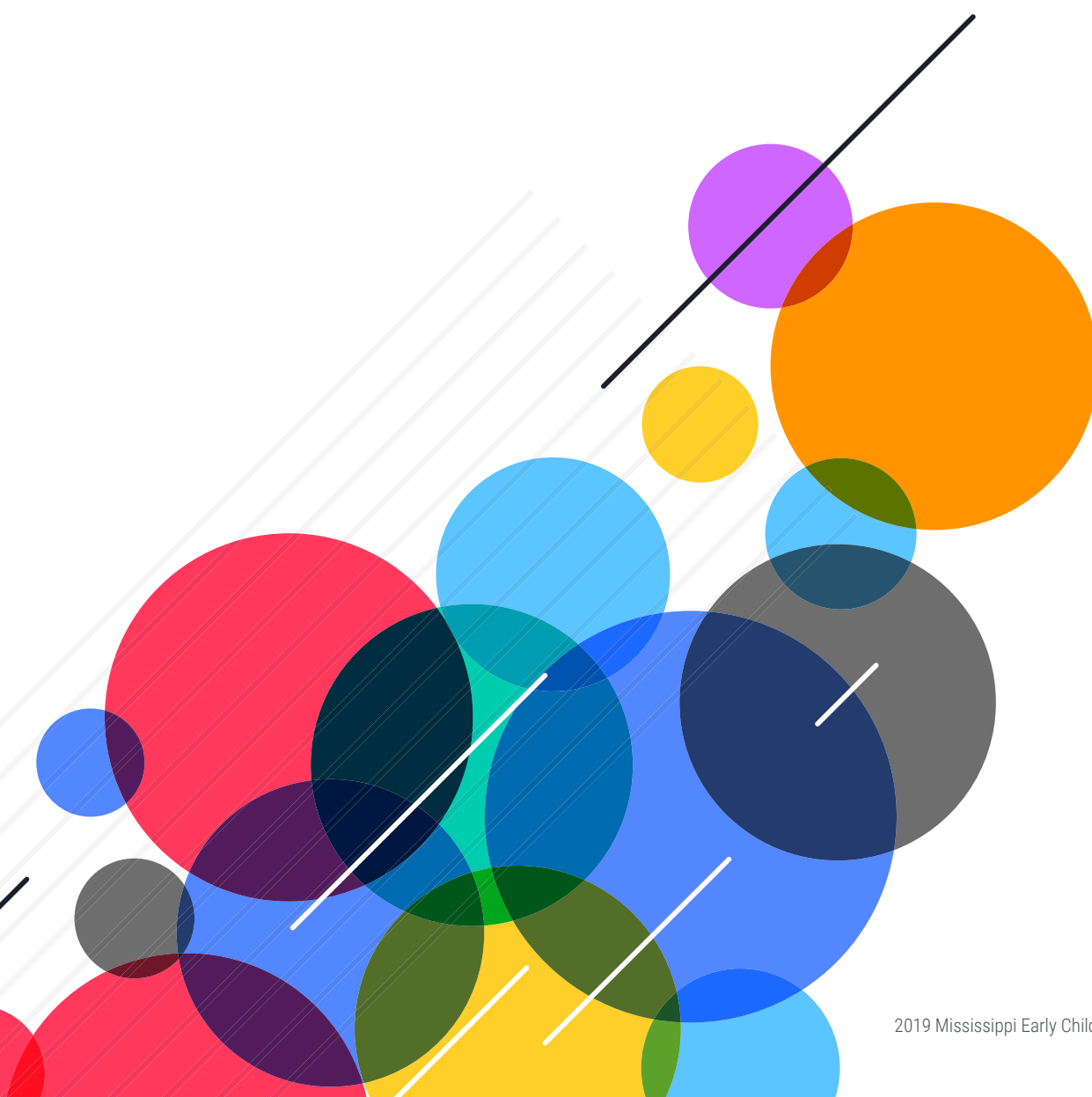
GRAND HOTEL ROSE

Communicating Effectively Through Creative Activities

The goal of the session is to help teachers and teacher assistants in communicating effectively with infants and toddlers through creative activities. Infants' and toddlers' activities will be divided into 5 broad areas: social awareness, language and communication skills, cognitive development, sensory motor skills, and creative development.

Josenda Dockery

GRAND HOTEL CAROLINE





THURSDAY

AGENDA

/// JULY 25 ///

8:30a – 9:45a

Closing Speaker

NATCHEZ CONVENTION CENTER

Welcome, Introduction, and Remarks // Dr. Chad Allgood

9:45a – 10:00a

Break

10:00a – 11:00a

Closing Remarks

NASHVILLE

The Best Source

for Early Childhood Products and Services



Educational Materials for Birth through Elementary



Professional Development—Online & Onsite



Technology designed for how children learn



Quality Wooden Furniture



Turnkey Playground design and installation



Kaplan Truck Delivery & Classroom Setup

Bryan Fulton

Southeastern Regional Sales Manager

1-800-334-2014, ext. 5026

bfulton@kaplanco.com

KAPLAN[®]

EARLY LEARNING COMPANY

1-800-334-2014 • www.kaplanco.com

PRESENTER BIOS

AMANDA ADAMS is a South-Central Region Family Engagement Transition Coach for the Mississippi Department of Education Office of Early Childhood. She received her bachelor's degree in Child Life and her master's degree in Early Intervention from the University of Southern Mississippi. After spending 10 years as the early interventionist at Children's of Mississippi, Amanda went on to be an early childhood classroom coach and evaluator. She lives in Jackson with her husband and two sons and serves on the Board of Directors for Children's Advocacy Centers of Mississippi.

MONA SPELLS ADOU is currently employed as a Parent Engagement/Trainer/Dispute Resolution Specialist at the Mississippi Department of Education, Office of Special Education. Her primary responsibilities include coordinating parent and family engagement training including Procedural Safeguards training that focuses on the parental rights of parents of students with disabilities. Mona Spells Adou has 10 years of experience as a Family/Community Service Specialist – Hinds County Human Resources Agency/Project Head Start where her primary responsibilities included coordinating and conducting various parent training. Additionally, Mona Spells Adou has five years of experience as a Family Services/Disability Coordinator – Easter Seals of North Georgia where she effectively developed parent/agency partnerships and coordinated and conducted parent training that focused on children with disabilities.

DR. CHAD ALLGOOD began his career in the early childhood education field over 16 years ago as a preschool teacher. Since then he has filled the role of teacher, administrator, professional development trainer, and is currently the Director of Child Care Licensure at the Mississippi State Department of Health. He holds a Ph.D. in Human Development and Family Science from Mississippi State University. Dr. Allgood is a past president of the Mississippi Early Childhood Association and currently sits on the State Interagency

Coordinating Council for early intervention. He is also the State partner with the Early Childhood Personnel Center State Team for early intervention, and he sits on Mississippi's Obesity Prevention State Team. It is Dr. Allgood's firm belief that we are all stakeholders in early childhood education, and everyone should act as a voice for children and their future.

MELISSA BANKS joined the Mississippi Department of Education as an Instructional Technology Specialist in December of 2015. Before joining the MDE, Melissa taught business and technology courses at the high school level for eight years. In addition to teaching, Melissa also served in many leadership roles at her school and created and led multiple professional development sessions regarding the use of instructional technology in the classroom. Melissa completed her Masters of Teaching Arts in August of 2010 and received her National Board Certification in 2013.

CARLA BASSETT is a Registered Dental Hygienist serving as a Regional Oral Health Consultant for the Mississippi State Department of Health-Office of Oral Health and a Mississippi Dental Hygiene Liaison for the National Center on Early Childhood Health and Wellness. She has 26 years of combined experience in clinical and public health dentistry. Her experience with the Office of Oral Health includes dental program development and management for childcare and elementary programs in Mississippi. She developed the Make a Child's Smile preventive dental program for Mississippi Head Start and organized the collaborative effort of the Cavity Free Kids program for child care centers. Currently, she provides oral health anticipatory guidance and training, collecting disease surveillance data, oral health prevention, and promoting the benefits of water fluoridation. As DHL, she serves as a communication link for state and national oral health best practices for early childhood education programs.

DR. EILEEN BEAZLEY is the Executive Director of Excel By 5, Inc. She has more than 20 years of experience working with children and families in many capacities including teacher, child care director, technical assistant, trainer, and advocate. She holds a Bachelor's degree in Child Development and a Master's Degree in Family Life Education from the University of Southern Mississippi. Eileen earned her Doctorate in Early Childhood Education from Jackson State University.

MARLINDA BECK-LEE is employed with the Mississippi State Department of Health Child Care Licensure Division and has extensive knowledge on Child Care Regulations through training and hands on experience. Marlinda is a regional supervisor working alongside inspectors/investigators to provide child care providers technical assistance and recommendations to help promote the health and safety of children in their facilities.

LYDIA BETHAY is a Coach and Professional Development Specialist with the Early Childhood Academy at Northeast MS Community College. She brings many years of experience to this conference. She has been working in this field for 20 years while beginning her career as a program director and classroom teacher. The last few years she has been a trainer, as well as Program Director over other Professional Development Specialists.

CAROL BISHOP has worked in many areas of Early Childhood for the past 32 years. During this time, she has kept current on all of the new trends facing the early childhood field. For the past three years, she has had the opportunity to train classroom and administrative staff by developing and training in a variety of areas to include: Mississippi State Department of Health Licensure Regulations, Playground Safety, Directors Orientation, Infant and Toddlers, Two Year olds, Preschool and After-School Youth.



EMERLD BOLLS has worked in early childhood education for fifteen years including thirteen years with Head Start. She has a degree in Early Childhood and Family Education. She currently works for Families First for Mississippi as Coach/ Professional Development Specialist. She enjoys finding new ways to encourage teachers to meet their goals and be the best educator they can be.

LYDIA BOUTWELL is a career-educator and life-long learner. She retired from the State of Mississippi as an educator with 31 years of service, mainly in the areas of early childhood and elementary education. Lydia also taught as an adjunct faculty member in the Education Division at Mississippi State University – Meridian Campus for over 20 years. She is currently an Early Childhood Coach with the Mississippi Department of Education in the Office of Early Childhood. She enjoys working with early childhood teachers and children across the state as she is providing professional development and technical assistance to school districts, child care centers, and Head Start centers.

LAURA BUTLER brings over 20 years of experience as an educational consultant working with teachers and administrators. She uses a variety of reading products and approaches with applications in the PreK to college markets. Basal reading, guided reading, intervention for struggling and striving readers, incorporating digital and print solutions.

TABITHA BYNUM is employed with the Mississippi State Department of Health Child Care Licensure Division and has extensive knowledge on Child Care Regulations through training and hands on experience. Tabitha is a regional supervisor working alongside inspectors/investigators to provide child care providers technical assistance and recommendations to help promote the health and safety of children in their facilities.

RACHEL CANTER is the Executive Director of Mississippi First, on whose work the Early Learning Collaborative Act is based. Ms. Canter has been deeply involved in the implementation of the Act and in advocacy for expansion of the program. Mississippi First is one of the state's most prominent education advocacy organizations and has broad experience working with the legislature, the Mississippi Department of Education, school districts, early childhood advocates and organizations, and individual teachers, administrators, and students. Ms. Canter holds a Master's in Public Policy from the Harvard Kennedy School and brings 10 years of experience in advocacy in Mississippi.

COACH LARRY CALHOUN is the Division Director of the Office of Healthy Schools for the Mississippi Department of Education. He has over 20 years of experience in education, teaching in several school districts in Mississippi. Coach Calhoun is a graduate of Jackson State University, where he earned both his bachelor's degree in history and master's degree in education with an emphasis on healthy, physical education, recreation and dance. When he's not teaching, Coach Calhoun referees basketball games for the NCAA, AAU and numerous other athletic associations. He has been named an Outstanding Citizen by the city of Jackson and continues to actively serve in his community.

LEIGHANNE CHEESEMAN is an Assistant State Literacy Coordinator (K-3) and the English Learner Coordinator (K-3) with the Mississippi Department of Education's Office of Elementary Education and Reading. In this role she provides support to districts and schools on best practices for literacy instruction. Mrs. Cheeseman has an interest in vocabulary instruction and uses her EL experience to share strategies for developing and supporting language acquisition for all students. She also presents at statewide conferences for teachers and administrators across Mississippi, focusing

on all aspects of literacy instruction. A native of Orlando and graduate of Flagler College in St. Augustine, Florida, she has taught Kindergarten and First Grade in Florida and Mississippi.

CHRISCELLA CLAY is employed with the Mississippi State Department of Health Child Care Licensure Division and has extensive knowledge on Child Care Regulations through training and hands on experience. Chriscella is a regional supervisor working alongside inspectors/investigators to provide child care providers technical assistance and recommendations to help promote the health and safety of children in their facilities.

DALE DIECKMAN, ATC, CSCS is the Physical Education Specialist for the Office of Healthy Schools at the Mississippi Department of Education. Dale works with school districts to assist them by providing resources and training. He also works with The Bower Foundation traveling to school districts across the state helping present Move To Learn. Dale holds a degree in Coaching and Sports Administration from The University of Southern Mississippi and holds certifications with the National Athletic Trainers Association and National Strength and Conditioning Association.

WADE DAUGHDRILL is employed with the Mississippi State Department of Health Child Care Licensure Division and has extensive knowledge on Child Care Regulations through training and hands on experience. Wade is a regional supervisor working alongside inspectors/investigators to provide child care providers technical assistance and recommendations to help promote the health and safety of children in their facilities.

JOSEDA DOCKERY is a Childcare Licensure Official/Trainer for Mississippi Department of Health (MSDH). The area she covers is Region 1-DeSoto which, includes: Horn Lake, Southaven, Walls, Olive Branch, Mineral Wells, Lewisburg, and Lake Cormorant. She has been

with MSDH since June 2017. She is the former Center Director of ICS Hernando Head Start Center where she worked for over 11 years before taking her current position. Currently, she holds an Associate Degree in Marketing Management and Early Childhood Education, a Bachelor's Degree in Management, a Master's Degree in Organizational Management and Leadership, and a Master's degree in Biblical Studies. She has over 17 years' experience in education.

SANDRA ELLIOTT has served as a classroom teacher for over 25 years for grades 2 through middle school in Ohio and in Mississippi. She has also served as an educational program facilitator and a building interventionist. Throughout her career, she has been dedicated to meeting the needs of English Learners and struggling students. She is currently the English Learner Intervention Support Specialist for the Mississippi Department of Education (Pre-K-12). In this role, she provides technical support to teachers and administrators throughout the state on best practices, instructional guidelines, culturally and linguistically and responsive practices, intervention strategies and instructional strategies to support English learner students.

SHARON ERRICKSON is an Early Childhood Coach with the Mississippi Department of Education Office of Early Childhood. Before coming to the Department of Education, she spent over twenty years in the Montessori Community as a director, teacher, mentor, and serving on the Mississippi Montessori Alliance Board of Directors. Her passion is to guide both children and adults to reach their full potential in all aspects of life. She is a certified Montessori 3-6 educator, certified director, has a Master's in Elementary Education and is a Pre-K Classroom Assessment Scoring System (CLASS) reliable observer.

LIMEUL EUBANKS is the Arts (Dance, Media Arts, Music, Theatre, and Visual Arts) and World Languages Director in the Office of Secondary Education at the Mississippi Department of Education. Eubanks holds the following degrees:

Master of Fine Arts (MFA) degree with studio focus in both two-dimensional and three-dimensional art, Master of Education degree in Mild/Moderate Special Education with supporting areas in Art Education and Gifted and Talented, and Bachelor of Arts with a concentration in ceramics, painting, dramatic arts, and communications. Eubanks was a K-5 visual arts teacher and has received training in a wide variety of art mediums and forms with teaching experience in arts integration at the Pre-K to college levels and has designed and coordinated special arts-in-education projects and programs for teachers and students.

LEIGH-ANNE GANT currently serves as an Early Childhood Regional Coordinator with the Mississippi Department of Education Office of Early Childhood. She has served in the field of early childhood for over nineteen years. Her professional experience includes Pre-K teacher, Professor at Delta State University, Director of the Child Development Center, state program director, state early childhood supervisor, and regional coordinator. She is a Pre-K Classroom Assessment Scoring System (CLASS) reliable observer. She believes that learning is a lifelong process that begins at birth.

JOYCE GREER is an Early Childhood Instructional Specialist employed with the Mississippi Department of Education, Office of Early Childhood. During her career she has served as an Educational Consultant, Project Coordinator for T.E.A.C.H. Early Childhood MISSISSIPPI, a technical assistant specialist, an elementary school teacher and an instructional assistant. Joyce has provided early childhood professional development training and facilitated meetings for several early childhood organizations both in the state of Mississippi and nationally. Joyce is a National Board Early Childhood Generalist with a Graduate Certificate in Early Childhood Administration, Management and Leadership, a Master's Degree in Elementary Education and a Certified Pre-Kindergarten CLASS Observer and K-3 CLASS Trainer.

CAPPE HALLBERG currently serves as the Student Services Coordinator and adjunct instructor for Human Development and Family Studies. She was a former Certified Child Life Specialist and has worked with children and families experiencing trauma in diverse environments.

STEPHANIE HANEY has worked in the early childhood field as an assistant teacher, lead teacher, and now director of lab school. With over nine years of experience, she has encountered many day-to-day nuances of the early childhood profession. Currently pursuing a Ph.D. at Mississippi State University, this topic is her aim for dissertation research.

REBEKAH HARRINGTON is a licensed professional counselor and the Pediatric Evaluations and Developmental Services Coordinator for MECIC, coordinating full diagnostic assessments with additional professionals from the Pine Belt. In addition to this, she is also a Family Navigator, assisting families with finding resources within the community and being a support for them through the diagnosis and post-diagnosis process. Mrs. Harrington supports families in the Hattiesburg area and Southern region of the state, addressing mental health and developmental concerns. She conducts developmental, autism, and social and emotional screenings. She leads quality trainings with an emphasis on developmental monitoring.

DR. LARICKY HARRIS earned a bachelor's degree in early childhood education from Jackson State University, a master's degree from Jackson State University, and she recently received her doctorate degree from Jackson State University in early childhood education. Dr. Harris currently works for Families First for Mississippi as a Coach and Professional Development Specialist. She works with childcare centers across the Jackson area to educate and to improve the quality of our Mississippi childcare centers.

DR. BRITTANY HERRINGTON received her master's degree in early intervention (early childhood special

education) and her doctoral degree in special education with an emphasis in severe/low incidence disabilities at the University of Southern Mississippi. She previously served as a classroom teacher for both Pre-K and self-contained special education, a child care center director, and an early intervention provider with the Mississippi First Steps Early Intervention Program. Brittany has also worked on grants where she provided support and training to families and child care centers. During her recent employment at the Mississippi Department of Education (MDE), she worked for both the Offices of Early Childhood and Special Education where she assisted with Pre-K and kindergarten policy development and professional development. Brittany was also the early childhood special education coordinator at MDE and provided technical assistance to districts and schools for their special education Pre-K and significant cognitive disability elementary programming. She currently works for Realizing Excellence for ALL Children in Mississippi (REACH MS) as the Early Learning and Significant Cognitive Disability Specialist, focusing on supporting district and collaborative-wide implementation of Positive Behavioral Intervention and Support (PBIS) with SCD and early childhood populations. Brittany also adjuncts in special education for the University of Southern Mississippi.

CATHY HOLLINGSHEED is a retiree of Mississippi State University where she spent her career as administrative assistant and budget manager with the Early Childhood Institute. She currently works for the Graduate Center for the Study of Early Learning as administrative assistant for Dr. Cathy Grace. She has experience in reviewing, scheduling, managing meetings and conferences, grants and budgets with several early childhood programs. Cathy holds a Bachelor's in Information Technology Services from Mississippi State University.

AMYE HOSKINS serves as a Professional Development Specialist for the Mississippi Department of Education Office of Early Childhood. Her 15 years of experience in education includes early childhood and elementary education

in both Head Start and Jackson Public Schools. She holds a Bachelor of Science from Alcorn State University in Business Administration and a Master of Science in Elementary Education from Jackson State University. Hoskins is currently enrolled in the Educational Leadership program at Belhaven University. Additionally, she is a certified Pre-K Classroom Assessment Scoring System (CLASS) Trainer and a CLASS Reliable Observer. She provides training and technical assistance across the state to administrators, district leaders, principals, teachers, and teacher assistants that work directly with Pre-K students.

KARYN JANKOWSKI has worked professionally with young children, their parents, school boards and staff for 19 years. She has formed new programs, expanded existing programs, and serve as classroom teacher, curriculum director, and head of school. She has served as a licensed child care provider trainer for the State of Mississippi and participated in the initiation of the widely-known "Excel by Five" program in Lafayette County. She has conducted workshops in Mississippi and Kentucky on a variety of topics at the Infant/Toddler and PreK-Kindergarten levels. She holds a Bachelor's in Business Administration from the University of Mississippi, a Master's in Early Childhood Education from Loyola University, and Montessori diplomas from the Association Montessori International at the Birth to Three and Three to Six Levels. She currently serves as President of the Mississippi Montessori Alliance and provides consultations and trainings for Infant, Toddler, and Pre-K programs across the state.

TESS JOHNSON received a bachelor's degree in Community Development from Portland State University and is currently attending graduate school at the University of Mississippi for Health Promotions. She worked in the nonprofit sector for eight years with The Boys & Girls Club and The Make A Wish Foundation before leaving this area of work to start a family. During this time Tess became certified in Kids Yoga through Rainbow Kids Yoga and began teaching kids' yoga classes in a preschool setting as well as community classes.

Since moving to Oxford, Mississippi in 2016 Tess started immersing herself into the community by teaching yoga classes and then serving as a Food Corps service member with Good Food for Oxford Schools; working in the schools to provide opportunities for students to grow, eat, and have exposure to nutritional food to harvest. While attending school Tess is a graduate assistant within the School of Education where she is helping to develop a whole-child curriculum under the direction of Dr. Alicia Westbrook and Dr. Kenya Wolff. Tess is also the Alumni Chair for the Food Corps Alumni Council and serves on the communication and marketing committee. In her free time, Tess continues to work with local schools by serving on the Health Council and the PTO with Good Food for Oxford Schools. She also works with Tower Gardens, helping teachers/schools secure funding to purchase this tool to bring gardening directly into a classroom and cafeteria.

DAWN JONES has just completed her twenty-fifth year of teaching, enjoys sharing her love for young learners and early childhood with others. She has served as a lead teacher at North Jackson Elementary and with the Jackson Public School District Pre-K team. Her work on the Mississippi Early Childhood Standards revision team and on her district's curriculum adoption team have given her insight into the needs of students and the educators who serve them. Jones delights in working with her students to provide them with various opportunities to gain skills needed to be successful. She also enjoys collaborating with other educators to ensure all young children receive quality experiences in early childhood settings.

JAYME JONES currently works as the Professional Development Specialist for the Mississippi Department of Education Office of Early Childhood. Jayme has been in the field of early childhood education for over 24 years and has served in many different roles, as a teacher, coach and mentor to infant, toddler, and Pre-K teachers, a center liaison, coach trainer and as a field supervisor. Jayme's desire is to encourage and inspire others to help our children grow through positive loving interactions and

by offering them the best developmentally appropriate hands-on experiences to help children develop a love of learning that will last a lifetime.

JENNY KERN is a Business Advisor for the Early Childhood Academy, working with directors to expand knowledge of financial and business management practices. She resides on the Mississippi Gulf Coast and services the southern counties of our state.

TONI KERSH is currently the Bureau Director for the Mississippi Department of Education, Office of Compulsory School Attendance Enforcement. She has approximately 28 years of experience in the field of education with over 21 years with the Mississippi Department of Education. Mrs. Kersh received a Bachelor of Science Degree in Communicative Disorders from Jackson State University in 1988 and a Master of Science Degree in Communicative Disorders from the University of Mississippi in 1990. Mrs. Kersh has worked as a Language/Speech Pathologist for Lafayette County School District, Magnolia Speech School, and Jackson Public School District prior to accepting a position at the Mississippi Department of Education. She has worked in the areas of special education, compulsory school attendance, alternative education, GED Option, counseling, and dropout prevention at the department. She also provides training and technical assistance in the areas of the "Every Student Succeeds Act (ESSA) Foster Care Educational Stability Requirements", Chronic Absenteeism and "Mandated Reporting" for child abuse and neglect.

DR. MICCA KNOX serves as the Assistant Executive Director for the Early Childhood Academy. Dr. Knox is licensed in Administration and Supervision and Early Childhood Education at the Doctorate level. Dr. Knox's leadership experience includes providing direct oversight to all Academy operations and functions. She is a former school administrator, consultant for school districts to enhance leadership practices in school settings, and has served in other leadership roles.

DR. LESLIE LAVERGNE is the Emphasis Area Director of Wellness Programs at the Institute for Disability Studies housed within the University of Southern Mississippi. In this role, she oversees projects related to physical, mental and overall wellness of children and families with special health care needs. Further, she provides families with health education and in obtaining services and resources for children from state and private agencies. As Mississippi's Ambassador to the Centers for Disease Control and Prevention's Learn the Signs, Act Early Program, Dr. LaVergne provides trainings statewide to increase awareness and education in early identification of children at-risk for developmental delays. Dr. LaVergne received a Master of Science in Counseling and Art Therapy from Eastern Virginia Medical Schools and a Ph.D. in Special Education from the University of Southern Mississippi. She is the co-author of numerous professional publications and continues to conduct research related to wellness.

ORNETTE LEE was born in the Island of Jamaica. She studied in London at the college of North West London with a major in Early Childhood and Education. She has been working with children of all ages for over 25 years. She loves working with children and watching them grow and seeing them develop into some of the most amazing adults, which she says, "is so rewarding to me!"

JAY LEDBETTER is the Senior Criminal Justice Policy Advisor for Governor Phil Bryant. He has occupied this position since 2013. Prior to this, he served as the Homeland Security Advisor to both Governors Haley Barbour and Phil Bryant. A graduate of the University of Southern Mississippi in Criminal Justice, Mr. Ledbetter has over 40 years' experience working in Law Enforcement. Working first with the Madison County Sheriff's Office, he later served as the state's first Director of Casino Enforcement for the Mississippi Gaming Commission. After a decade with the Commission, he was appointed Homeland Security Advisor and Executive Director for Mississippi Homeland Security

by then Governor Haley Barbour. He is also heavily involved in aquatic rescue training and certification. Jay holds Instructor or Instructor Trainer certifications through the American Red Cross, American Heart Association, Divers Alert Network, Boy Scouts of America, and National Aquatic Safety Company. Mr. Ledbetter is also an Advanced Open Water SCUBA Instructor, Diver Medical Technician, and a Nationally Registered Emergency Medical Technician. Through the US Department of Homeland Security, he is an Agro-Terrorism Master Instructor, and also instructs Incident Response to Terrorist Bombings.

LISA LONG is a Research Associate II at the Social Science Research Center (SSRC) of Mississippi State University working with the Mississippi Thrive Child Health and Development Project. Mississippi Thrive is a joint project of the University of Mississippi Medical Center (UMMC) and the SSRC which seeks to improve the developmental health of children ages 0-5 in Mississippi. Ms. Long is an experienced educator with program management, design, planning, implementation, and monitoring/evaluation skills with experience teaching in both American and international preschools. She holds a Bachelor of Arts from Rhodes College and a Master of Arts in International Educational Development with an emphasis in Early Childhood Education from Teachers College, Columbia University. Before joining the SSRC in 2012, she worked both internationally and domestically with the nonprofit organization, Save the Children, as their Senior Education Specialist in Early Childhood Development.

MONICA F. MAY currently serves as the Assistant Director of Early Childhood at the Mississippi Department of Education Office of Early Childhood. She received her Bachelor of Science in Child Development and her Master of Science in Child and Family Studies from the University of Southern Mississippi. She has served in the field of early childhood for over 25 years in multiple capacities such as teacher, non-profit administrator, early childhood care and education director, early childhood coach, early childhood supervisor, and a state level project director. She has a

passion of empowering lifelong learning and the responsibility of modeling that not just for young children, but also educators, and other colleagues in the education community. She takes a holistic approach to facilitating the highest quality early childhood practices to best serve the whole child, family, and education communities. She is a Pre-K Classroom Assessment Scoring System (CLASS) reliable observer.

ELOISE McCLINTON has worked for ICS for 27 years and has been the Executive Director for 12 years. She is currently serving her second term as the Mississippi Head Start Association President. Additionally, she serves on the Region IV Head Start Association Board and the National Head Start Association Board.

KRISTI MCHALE is the Division Director of the Division of Early Childhood Care and Development at the Mississippi State Department of Human Services. She oversees the Child Care Payment Program that provides child care subsidies to working and student parents and the Healthy Families Mississippi home visiting program. She holds a Juris Doctorate of Law and Bachelor of Science in Commerce and Business Administration.

ADRIENNE MERCER currently serves as an Early Childhood Coach with the Mississippi Department of Education Office of Early Childhood. She has served in the field of early childhood for over twenty-one years in multiple capacities such as teacher, assistant director of Emerson Family School, project director of leadership development, program manager of Reading to Succeed, and early childhood coach. She has a passion for encouraging professionals in the early childhood field and helping guide them to high quality best practices. She is a Pre-K Classroom Assessment Scoring System (CLASS) reliable observer.

MICHAEL T. MOZEE has 10 years of combined experience teaching early childhood education in multicultural classroom settings, coaching young professionals as well as evaluating and

managing data. He received his Bachelor's degree from Jackson State University in Early Childhood Education. Michael is currently enrolled in the Master's Program in Early Childhood Education at Jackson State University. He currently works as a Coach & Professional Development Specialist with Families First for Mississippi. He continues to believe that our future is directly connected to the information gained by our young people in classrooms today.

PAMELA MYRICK-MOTTLEY is a retired early childhood educator whose interests include social/emotional development of young children, especially the effects of trauma on child development. Her most recent focus is on teacher training to assist classroom teachers and caregivers in strengthening the emotional regulation and well-being of children. Her practice has been most informed by a long-term study of Conscious Discipline® which includes two (2) week-long training sessions with Becky Bailey, multiple webinars, book studies and direct classroom experience. She most recently conducted a Conscious Discipline® session for the Mississippi State Department of Education Pre-K Boot Camp. She has also provided classroom coaching in Conscious Discipline® in a variety of settings.

ANNE M. NELSON has nineteen years of service working in the social work field. She has experience with Alcohol and Drug Prevention, Alcohol and Drug Treatment, Psychiatric Care as well Child Welfare. Anne is currently employed with the State of MS through the Department of Child Protection Services.

JULIE NORMAN is Lead Family Navigator for the Mississippi Early Childhood Inclusion Center (MECIC). Julie leads a professional development program for center directors to learn how to establish an on-going screening program in the early childhood environment. Mrs. Norman leads screening days and assists families in the Southern Region of the state in making referrals.

TUNGA OTIS is a Family Engagement Specialist with the Mississippi Community College Board (Early Childhood Academy). She holds a M.Ed. in Elementary Education and Special Education. Tunga has 20 years of teaching experience as a classroom teacher and college instructor. In addition to her responsibilities at ECA, she provides professional development training to early childhood professionals throughout the state of Mississippi.

JULIE PARKER is an associate professor in Human Development and Family Science and Certified Child Life Specialist. She has over 20 years of experience working with young children and families in diverse environments and under stressful conditions.

DEEDA PAUL currently serves as Early Childhood Coach with the Mississippi Department of Education Office of Early Childhood. Although a native of the Mississippi Delta, she has served in the field of education for over twenty years in the Detroit area in multiple capacities such as teacher, elementary school administrator, early childhood specialist, and educational liaison for the homeless. She embraces all opportunities to support educators in better serving children to not only be educationally prepared but educated to live a life of productivity and purpose. She believes all children have the capability to learn and should be exposed to high-quality educational experiences that leaves them with the desire to want more, learn more and be more. This can only be achieved when educators are well-prepared to take them by the hand and lead them in the proper educational direction.

MERRY PENNELL currently serves as an Early Childhood Coach with the Mississippi Department of Education Office of Early Childhood. She has served in the field of early childhood for over thirty years in multiple capacities such as teacher, early childhood center co-director, on-site literacy mentor, and early childhood supervisor. She believes high quality early childhood education should provide developmentally appropriate learning through hands-on activities. She is a Pre-K Classroom

Assessment Scoring System (CLASS) reliable observer.

TONYA PICKENS currently serves as an Early Childhood Coach with the Mississippi Department of Education Office of Early Childhood. She has over twenty-two years of early childhood experience. She has worked in the early childhood field as a Head Start teacher, field technical assistant, field technical assistant supervisor, project manager, kindergarten teacher and coach and professional development specialist. She is passionate about the education of young children. She strives to help educators, parents, and the community understand the importance of providing powerful and effective interactions with children to foster their development socially, emotionally, cognitively and physically. She is a Pre-K Classroom Assessment Scoring System (CLASS) reliable observer.

CALLIE POOLE has six years of experience serving as a lead preschool teacher. She also established a Pre-K program, where she served as teacher and director for four years and has taught 1st-3rd grades as well. Callie also has two years of experience serving as a therapeutic behavioral coach for young children with harmful behaviors that put them at risk of losing their home or school placements. Callie's degrees include a Bachelor of Arts in psychology from Millsaps College and a Masters in Arts in Education from Prescott College. Since January of 2018, Callie has worked with the Family and Children Research Unit at Mississippi State University's Social Science Research Center on the Mississippi Thrive! Children's Health and Development Project, spreading the word about the importance of supporting young children's brain architecture and regularly marking their developmental milestones.

MARISA PREWITT is an Early Childhood Coach with the Mississippi Department of Education Office of Early Childhood. She received a bachelor's degree in Early Childhood Development, as well as a master's degree in Educational Administration and Leadership from

Mississippi State University. She previously taught kindergarten for fourteen years, as well as serving as an assistant teacher in kindergarten for one year. She also teaches a GED class during the school year. On Sunday mornings, she volunteers at her church teaching 3 year-old-kindergarten children's church. She is dedicated to bridging the gap between preschool and kindergarten.

GENA PUCKETT is currently an Education and Training Specialist with the Graduate Center for the Study of Early Learning out of the University of Mississippi. Gena also serves on the Mississippi Early Childhood Association (MsECA) Executive Board as President-Elect. She has over 28 years of experience in the early childhood field as a teacher, center director, technical assistant, and field supervisor. She holds a Master's in Early Childhood Studies from Walden University and a Bachelor's in Early Childhood Education from Ashworth College.

OKI RAGINS currently serves as an Early Childhood Coach with the Mississippi Department of Education Office of Early Childhood. She is a Pre-K Classroom Assessment Scoring System (CLASS) reliable observer. She is a graduate of the University Southern Mississippi where she received a Bachelor of Science in Education and Early Childhood and a Master's of Science in Social Work. She has over 27 years of experience working with children and families in the field of Education and Social Services. She has served in several capacities across the state as pre-k teacher, Title 1 coordinator, children's librarian, mentor, trainer, evaluator, caseworker, and recruitment director. She has worked with National Diligent Recruitment Center to help develop work plans and family engagement curriculum for Mississippi Department of Child Protection Services. Additionally, she serves on several committees on a local and state level to enhance the lives of children and families in her community and Mississippi. Her objective in life has always been to utilize her life experiences, education, dedication, positive attitude, and diverse skills to help educate, model, and assist children and families with the

knowledge and tools they need to enjoy and cope with the phases of life. Oki enjoys spending time with her husband and four children.

MELISSA READUS holds a Master of Arts in Education (MAEd) with Specializations in both Special Education and Curriculum and Instruction and has recently become a member of Women in Higher Education – Mississippi Network (WHEMN). Melissa has enjoyed over 12 years of teaching preschool. Conversely, she has also served as a Director of Head Start. After her experience with teaching she enhanced her profession and became an Early Childhood Coach for Mississippi Building Blocks where she provided onsite coaching to support instructional and assessment practices, as well as classroom management to Early Childhood Professionals. After five years of employment with Mississippi Building Blocks she transitioned to the profession of a Coach and Professional Development Specialist with the Early Childhood Academy where she continued to provide onsite coaching and training to support instructional and assessment practice and classroom management in addition to providing ongoing Professional Development to Early Childhood Professionals. Melissa is currently a Family Engagement Specialist for the MS Community College Board/Early Childhood Academy.

TAMMY RUTLAND has a Master's degree in business administration (with emphasis on Executive Leadership) from William Carey College and is currently pursuing her Ph.D. in Human Capital Development at the University of Southern Mississippi. She currently holds the position of Business Advisor for the Mississippi Community College Board & Early Childhood Academy. Her work experience has a diversified background and includes positions in the fields of education, grants, management, marketing, healthcare, and sales. Mrs. Rutland is a Certified Assessor with Program Administration Scale (PAS) (a measurement tool for early childhood leadership and management developed by the McCormick Center for Early Childhood

Leadership at National Louis University, Chicago, IL) and is an approved instructor for the Mississippi State Department of Health (MSDH) Division of Child Care Licensure and is certified to teach professional development courses she developed to early childhood directors and staff in the state of Mississippi.

ANNE MARIE ROSS is an instructor of Early Childhood Education at Northwest Mississippi Community College. Mrs. Ross has worked in the field of early childhood education for 15 years.

ANDREA SANDERS has served as Chief Counsel for Programs for the Mississippi Department of Human Services since 2017. In 2005, she completed a Juris Doctor at the Mississippi College School of Law while raising two small boys. After graduating, she worked as an attorney in private practice, and for the judiciary, prior to joining the team at MDHS. Andrea also completed a master's degree in Social Work at the University of Tulane in 1992, worked as a clinical therapist with children and adolescents, and then as a hospital administrator in both the public and private sectors prior to starting law school. In addition, she has served as an adjunct professor at the Jackson State University School of Social Work, Hinds Community College, and taught parenting classes to low income families on a volunteer basis.

ELIZABETH SIMMONS received an Ed.S. in Secondary Administration from Delta State and M.S. in Library and Information Science from the University of Southern Mississippi. She is the School Library Specialist at the Mississippi Department of Education. She is a strong advocate in bridging the information literacy gap, working with teachers, librarians, and administrators to bring the library to the forefront of curriculum. Her professional interests focus on incorporating new technology into everyday academics. She has spoken at this conference for the past two years and has worked closely with the Early Childhood program office at the Mississippi Department of Education.

LAURA SMITH is a Licensed Master Social Worker who has worked in children's mental health for the last ten years. In the last seven years she has spent most of her time focused on Infant and Early Childhood Mental Health (IECMH), looking at the social-emotional and behavioral challenges of children birth to five. She has received over 250 hours of post graduate training in IECMH and has presented and trained across the state of Mississippi on this scope of practice. She has experience in family-driven care and system of care and has presented nationally and locally on these topics. Her passion for this work is enhanced by her experience as a mother to her 15-year-old daughter who experienced social-emotional, behavioral and learning challenges from infancy.

SANDRA G. SMITH is an enthusiastic professional educator with over 30 years of experience. She has a Bachelor's Degree in Family and Consumer Science and a Master's Degree in Early Childhood Education. For the past five years, she has had the opportunity to train classroom and administrative staff by developing and training in a variety of areas to include: Mississippi State Department of Health Licensure Regulations, Playground Safety, Directors Orientation, Infant and Toddlers, Preschoolers and Afterschool; along with offering technical assistance to child care providers. Sandra has also presented at several early childhood conferences.

TAMARA SMITH is a resident of Jackson, MS. She is the director of Little Samaritan Center. She is a graduate of Jackson State University with a Bachelor's degree in Early Childhood Education. She has been working with children and families for the last 20 years.

LORI STATON is an associate professor in Human Development and Family Science and is a certified instructor in Child Advocacy Studies Training. Her research focuses on biophysiological aspects of development, particularly in the context of poverty and family stress.

MONICA STINSON is the Bureau Director for Maternal and Infant Health with the Mississippi State Department of Health. She has served in this role for the past 5 years. She is also the Program Manager for the Mississippi Perinatal Quality Collaborative and lead for the Safe Sleep Initiative. She has extensive experience in program planning, development and evaluation, coalition building, and grant and budget management. Monica completed her undergraduate studies at the University of Southern Mississippi in Health Education and Administration. She received her Master's degree in Health Education from Mississippi University for Women. Monica is also a Certified Health Educator Specialist.

ELIZABETH STONE currently serves as the Early Learning Collaborative Coordinator with the Mississippi Department of Education Office of Early Childhood. She has served in the field of early childhood for over fifteen years as a preschool teacher, early childhood assessor, regional coordinator, early childhood mentor, and program coordinator. She is dedicated to working with educators of young children and helping guide them with best practices in the classroom. She is an affiliate trainer with the Pre-K Classroom Assessment Scoring System (CLASS), as well as a reliable observer.

CANDICE TAYLOR has 23 years of experience in the field of special education. She graduated from Mississippi College with a degree in Special Education in the area of mild/moderate disabilities. Taylor taught in an inclusion program in Jackson Public Schools for two years. She spent 17 years with Clinton Public Schools, as a self-contained special education teacher, inclusion teacher, then community-based teacher. Taylor went on to become the Case Manager for the district for four years. She has served as Parent Outreach Specialist in the MDE, Office of Special Education's Bureau of Parent Engagement and Support for a year and a half and has spent the last two and a half years in the Office of Early Childhood as the Special Education Instructional Specialist/619 Coordinator.

MELISSA TENHET is the Director of the Child Development and Family Studies Center on the campus of Mississippi State University. She has over 20 years' experience working with young children, families, and early childhood providers.

COUNTESS THOMPSON has a passion for early childhood education. As a director and owner of an early childcare center for more than twenty years, she understands the importance of providing a quality and solid education for the children that are entrusted to every childcare center. She states, "As a mother of four girls, I find myself surrounded by children all the time. As a result, children are a joy to be around and hold a special place in my heart."

ELIZABETH THORNE is currently a doctoral student at Mississippi State University in the Human Development and Family Science program and serves as a graduate assistant within the department. She has previously earned her Master of Science in this field and has a Bachelor of Science in Human Sciences, concentrating in Human Development and Family Studies with an emphasis in Early Childhood Education. Thorne has previously worked in Head Start, the Early Years Network, and other non-profits.

ANGELA TOWERS is the Northern Region Family Engagement Transition Coach for the Mississippi Department of Education Office of Early Childhood. A former principal and classroom teacher, Towers has 17 years of professional experience working with children and families. She attended Delta State University, earning a Bachelor of Science in Education (Elementary Education), Master of Education in Educational Leadership, and an Educational Specialist in Administration and Supervision. Her most notable accomplishments include Cleveland School District Teacher of the Year and Past President of Mississippi Professional Educators. Towers resides in Cleveland, Mississippi with her husband, Nathan, and children, Caleb and Natalie.

KATHY WALL graduated from University of Southern Mississippi with a Bachelor of Science and Master of Science degree in Child Development. Kathy is working as an Early Childhood Coach with the Mississippi Department of Education Office of Early Childhood. She has her Child Care Director certification. Kathy worked with Madison County Schools teaching Pre-K in a partnership with Head Start for 16 years. She has worked as a Child Care Center Director. She has had a lifelong passion for working in Early Childhood.

TAMMY WALLACE currently serves as an Early Childhood Coach with the Mississippi Department of Education Office of Early Childhood. She has over 25 years of experience in the field of education spanning across four states and held various positions from classroom teacher to administrator. She has served as a mentor for teachers, helped create Pre-K and Kindergarten curriculums, and founded a Pre-K program in the private sector. She is a Pre-K Classroom Assessment Scoring System (CLASS) reliable observer. Additionally, she has served on several committees at the state level for Early Childhood Education. In 2013, she was awarded "Teacher of the Year" for Hinds County which provided her a platform to promote the value of Pre-K for ALL children in the state of Mississippi. She is passionate about developing meaningful relationships with children and teachers alike. Her firm belief is that strong relationships produce successful people. She wants teachers to know what they do matters.

SANDRA WATKINS is an Early Childhood Coach with the Mississippi Department of Education Office of Early Childhood. Sandra has a Bachelor of Science in Child Development from the University of Southern Mississippi. As she has moved through her early childhood career, she has been a lead teacher in Pre-K, an early childhood mentor, student-teacher supervisor, early childhood technical assistant, and a professional development specialist. Sandra has over 25 years of experience in early childhood.

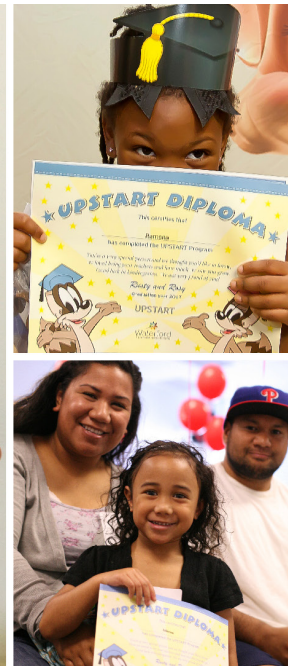
LAURIE WEATHERSBY is the Elementary Intervention Specialist in the Office of Elementary Education and Reading at the Mississippi Department of Education. She received her bachelor's degree in Elementary Education from Mississippi State University and her master's degree from Mississippi College in Dyslexia Therapy. Laurie served as a first-grade teacher and an elementary school interventionist. She was selected as Teacher of the Year for her school during her time as a school interventionist. Laurie transitioned into the District Interventionist and Dyslexia Coordinator position at the district office before taking her current position at the Mississippi Department of Education. Laurie is a Certified Academic Language Therapist and a Licensed Dyslexia Therapist.

DR. ALICIA WESTBROOK directs the Mississippi Early Childhood Inclusion Center (MECIC) by ensuring the vision of the program and securing state and federal funding. Dr. Westbrook serves as a member of the PEDS team and leads the research efforts of the program. She serves as the Inclusion Classroom Profile Assessor for MECIC. Dr. Westbrook disseminates the program's activities in national conferences and publications. Dr. Westbrook is an Adjunct Professor at The University of Southern Mississippi, Department of Child and Family Sciences and School of Education.

DR. KENYA WOLFF is a professor at the University of Mississippi and teaches graduate and undergraduate courses in early childhood education. Dr. Wolff's experience as a classroom teacher and administrator allows her to bring real-world knowledge in her presentation. She has worked in rural southern settings for most of her career. Beyond her work in the classroom, she has served as a board member for the Texas and Florida AEYC at the state level on policy, issues that impact the lives of young children and their families. Dr. Wolff's research focuses on social justice and social-emotional health across various social contexts of childhood, including rural settings. She has authored multiple book chapters and scholarly articles, several on diversity issues.

SPONSORS





Waterford

UPSTART

**Free At-Home Kindergarten
Readiness Program**

Waterford UPSTART is an in-home kindergarten readiness program for families that will give your child a fun start in reading in just 15 to 20 minutes a day, 5 days a week.

FREE

Waterford UPSTART is a free computer-based program for children the year before kindergarten.



Waterford UPSTART may provide a **FREE computer** and Internet while enrolled in the program (if you don't have them).

Personalized

Waterford UPSTART uses the award-winning software, Waterford Early Learning. It provides hundreds of hours of instruction with an individualized learning path which builds upon children's strengths, knowledge and skills.



Each family is assigned a Personal Care Representative.

Independent and Fun

This easy-to-use program makes it possible for children to work independently and will capture your child's interest and imagination with engaging books, songs, and activities.



Waterford UPSTART is available to four-year-olds in the year before they enter kindergarten.

Reading Skills Taught

- Letter Recognition
- Letter Sounds
- Initial Sounds
- Reading and Listening Comprehension
- Real Words and Sight Words
- Vocabulary



It's not too early to start getting ready for kindergarten!

For more information, please contact:

LaTasha Hadley, Ed.D.

Waterford UPSTART Program Director

latashahadley@waterford.org

(601) 597-8055

www.WaterfordUPSTART.org

SPONSORS

Lakeshore Learning Materials

Kaplan Early Learning Company

W. K. Kellogg Foundation

Nick Floyd & Associates

The Waterford Institute

Risk Management & Associates

VENDOR INDEX

Lakeshore Learning Materials

Kaplan Early Learning Company

Accessories by Lisa, Etc.

Happi Nappi

Bliss Products and Services, Inc.

The Child Health & Development Project
Mississippi Thrive!

JA Dawson and Co.

Smiles that Go Mobile Dentistry

The University of West Alabama

Zono Services

Nick Floyd & Associates

