



Student Performance Events

Stimulus Materials

Proficiency Assessments for Mississippi Students-Alternate
MISSISSIPPI-ALT

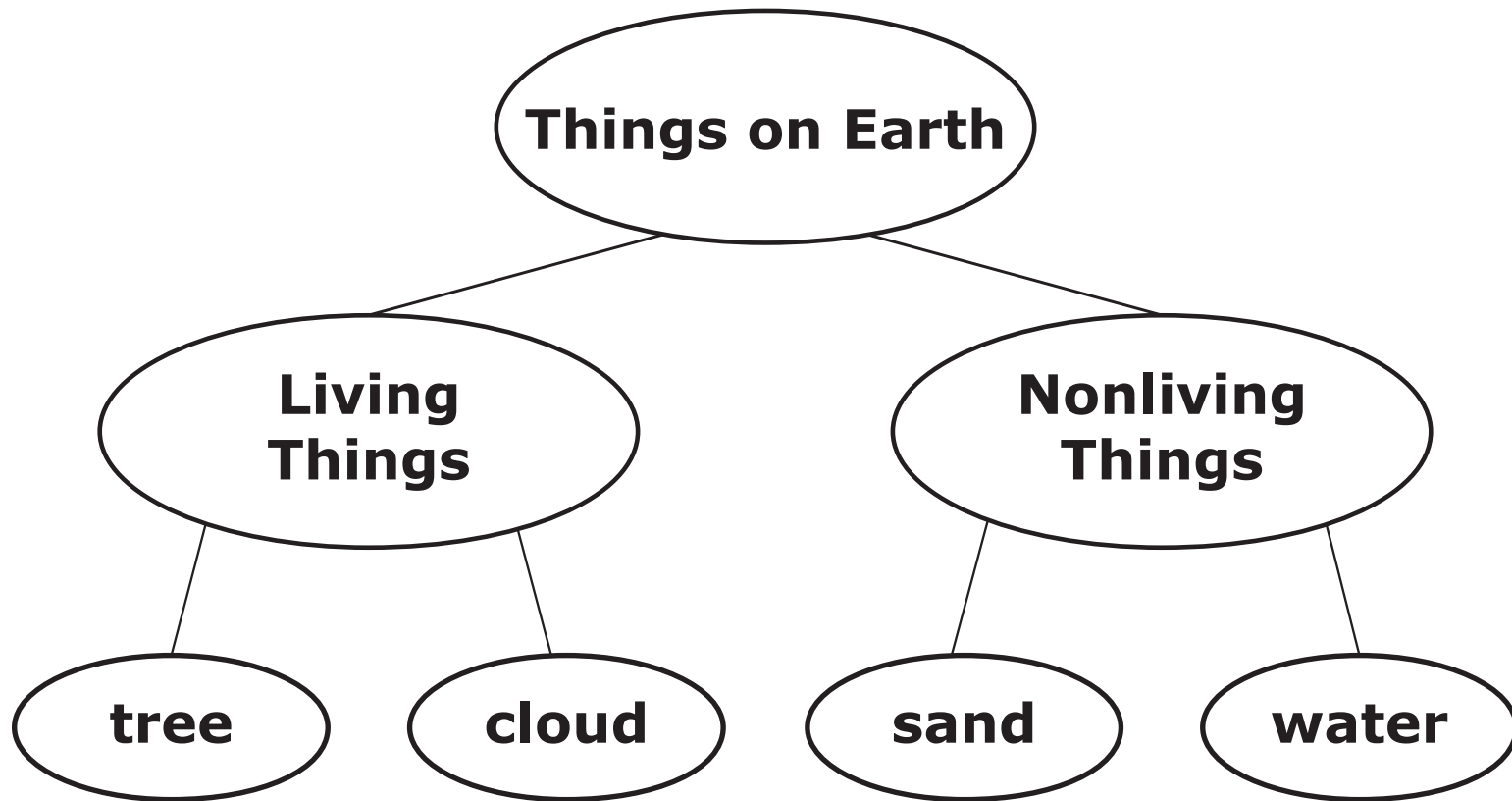
Biology Released

Copyright © 2022 by the Mississippi Department of Education

All rights reserved. No part of this publication may be reproduced or transmitted in any form or by any means, electronic or mechanical, including photocopy, recording, or any information storage and retrieval system, without permission in writing from the Mississippi Department of Education.

Printed in the United States of America.

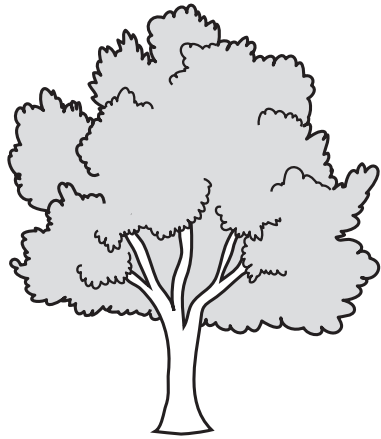
A living thing is defined as anything that is alive. A nonliving thing is defined as anything that is not living. It has never been alive.



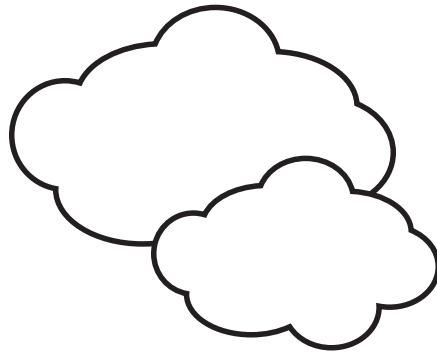
tree

cloud

sand



tree

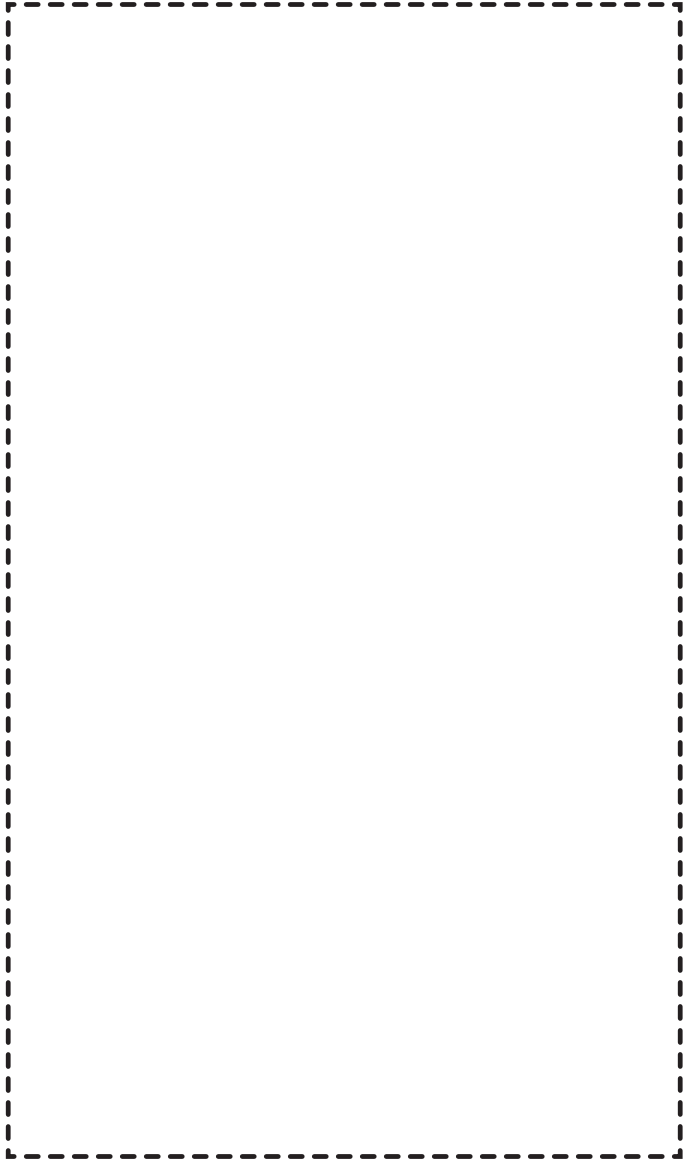
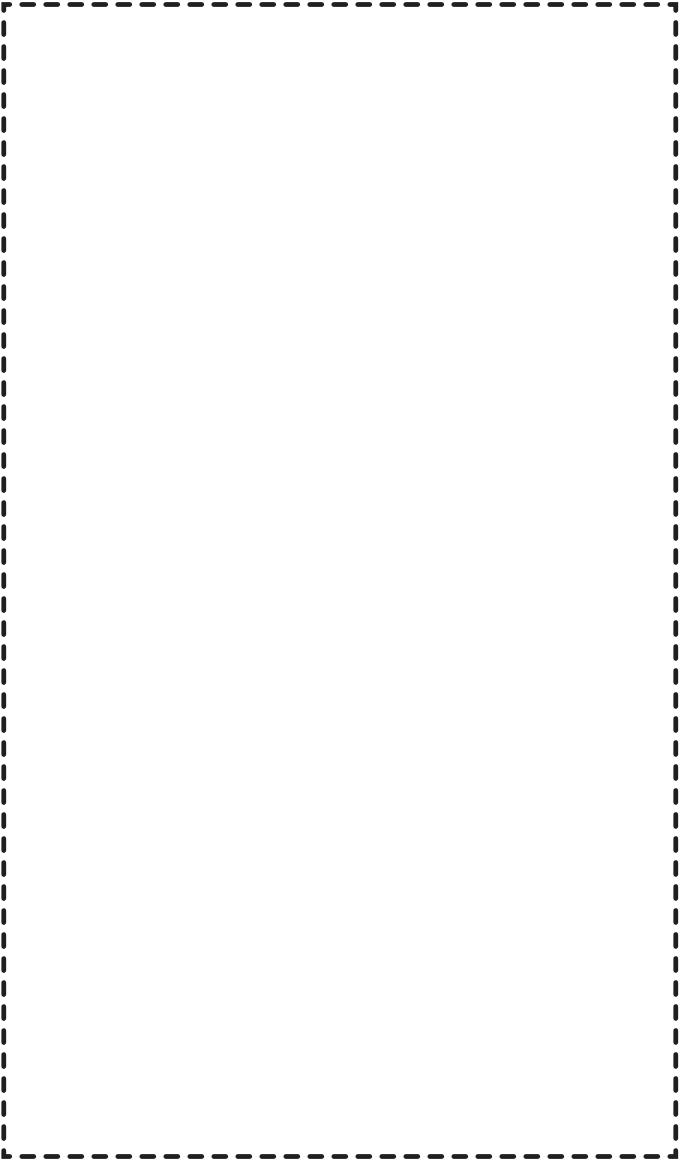


cloud



sand

Over time, some animals were not able to adapt to changes in the environment. Animals that could not survive became extinct. “Extinct” means that none of them exist on Earth.

Extinct	Living
	

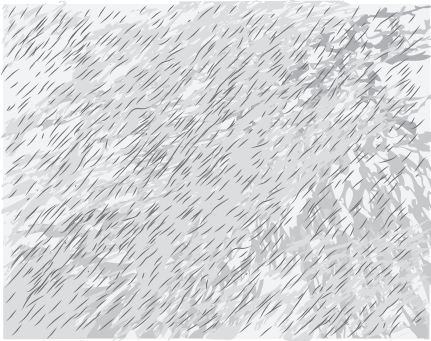


polar bear

**white
fur**

**sharp
claws**

**strong
sense of
smell**



**white
fur**



**sharp
claws**



**strong sense
of smell**